

**An-najah national university**  
**urban planning department**  
**Gradation project**

**National park**  
**Tubas-Aqqaba**  
**National park**



Done by: Ayat Khalilieh



# The idea of the project

- The Palestinian land



- The Nature

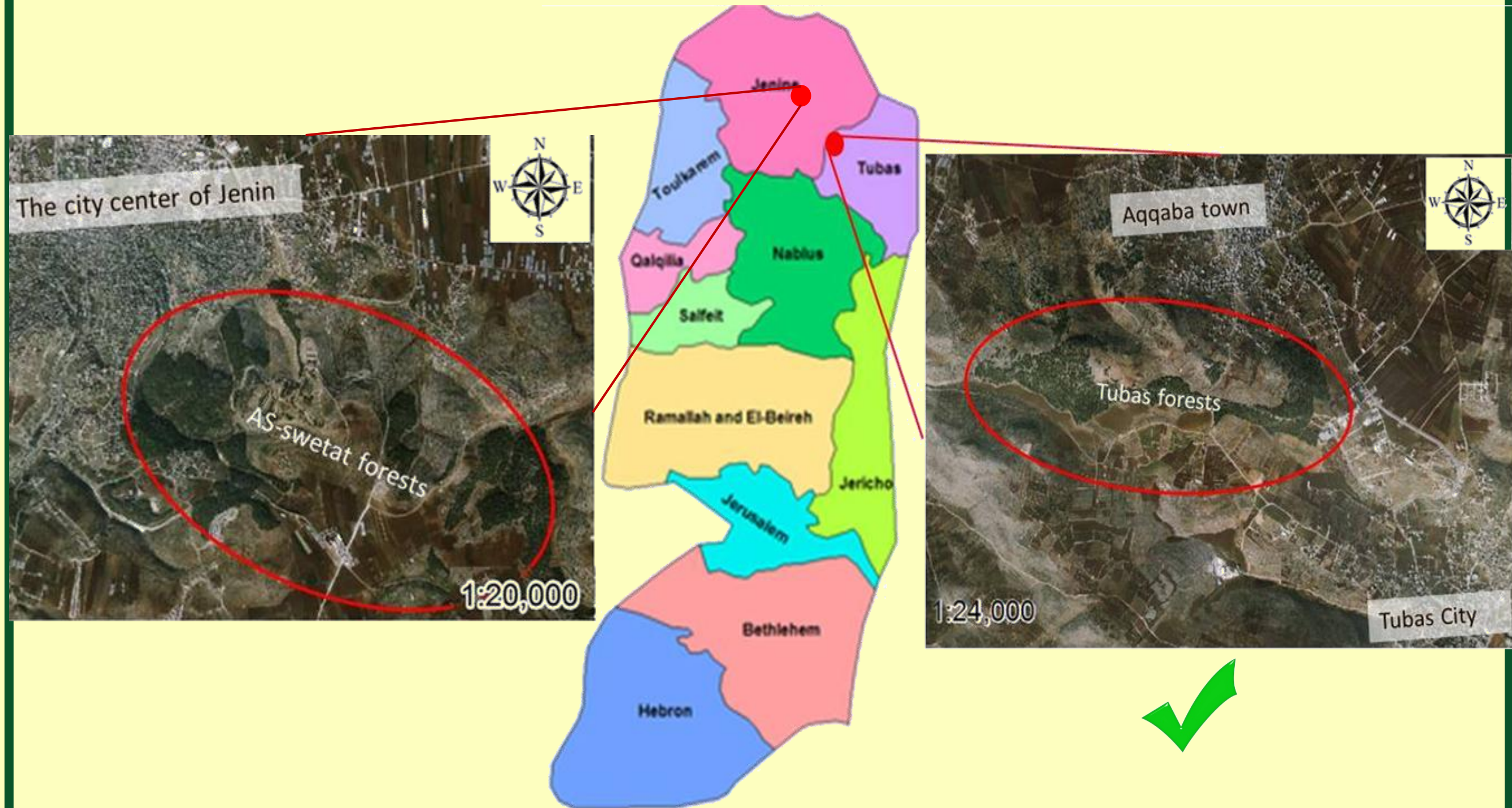


- The importance of recreation and tourist





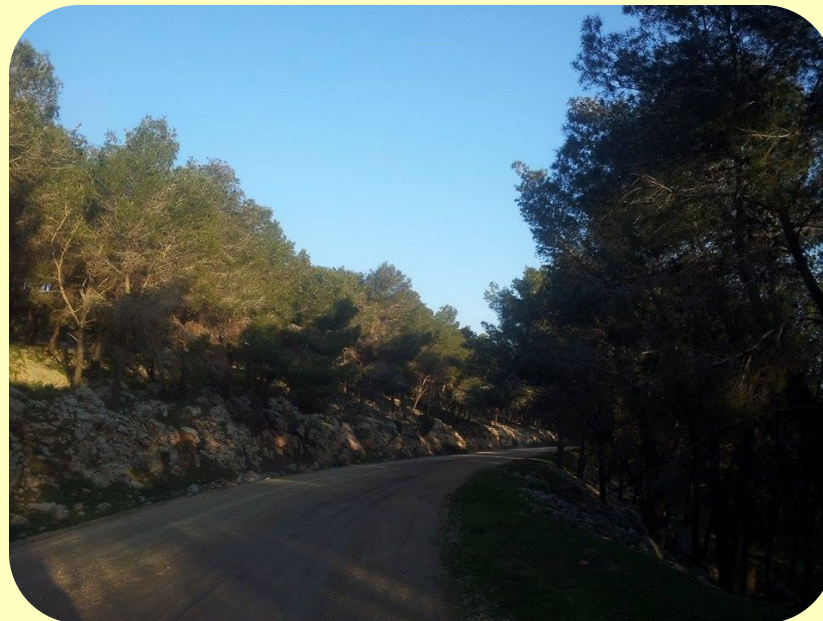
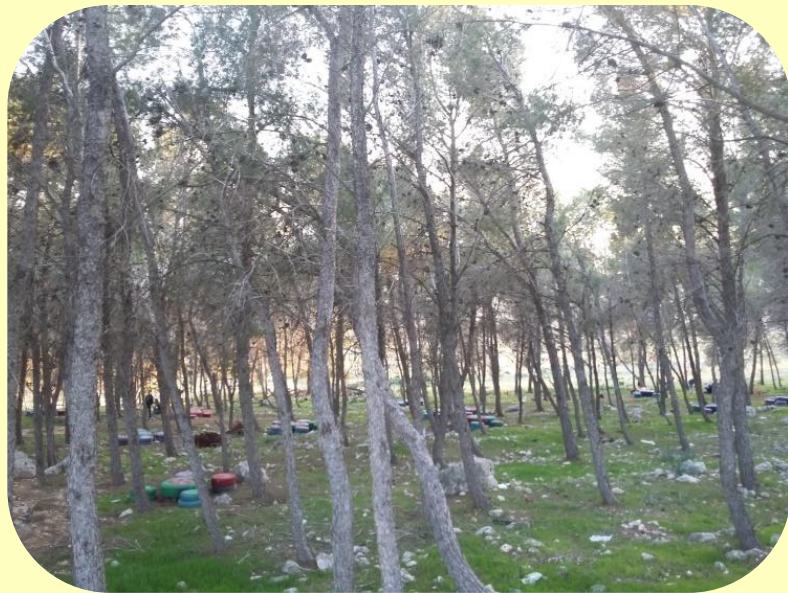
# site selection





# General

- The forests of Tubas Located in Tubas governorate in the north-western of the city.
- It contains approximately 700 dunum of pine forests
- It is classified within the area of bio-diversity as spatial protection plan.




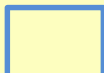



# The border of park



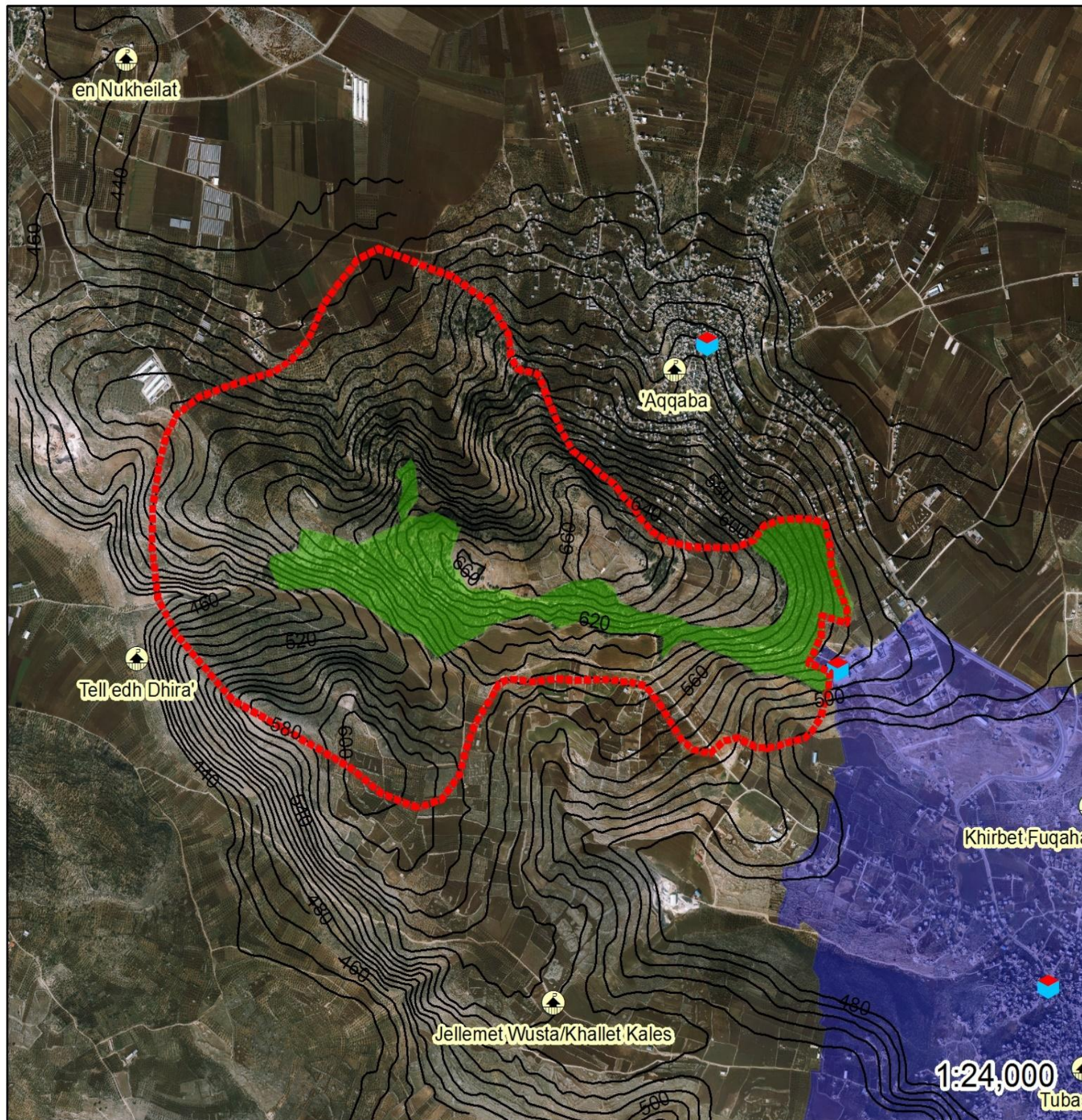
The border of  
park

## Legend

-  Bio divers area
-  Bio divers area buffer
-  The final boundary

# Strength and weakness

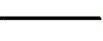




## Strengths +



### Legend

-  Archaeological Site
-  Health\_Facilities
-  forests for Recreation
-  Tubas city
-  Contours-10m(Variety in slope)
-  The proposed park

An-najah National University  
Faculty of Engineering and  
Information Technology  
Urban Planning Department


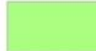

Done by: Ayat Khalilieh



## Weaknesses —

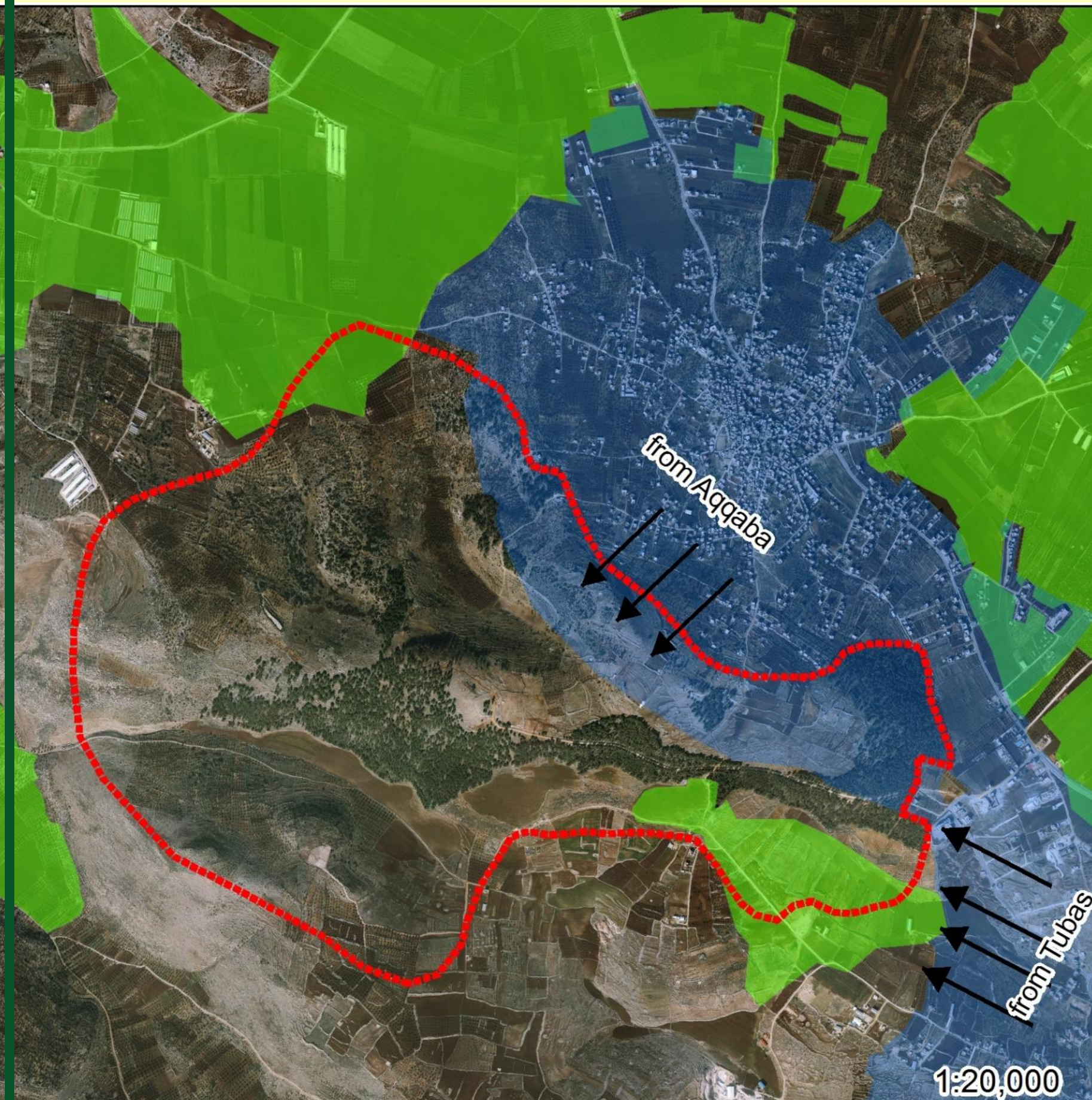


### Legend

-  urban future expansion
-  High value of agricultural land
-  The proposed park

An-najah National University  
Faculty of Engineering and  
Information Technology  
Urban Planning Department

Done by: Ayat Khalilieh





# Vision and objectives







# Activities in the national park

Public and  
management  
services

Information  
Center

Emergency  
Center

Health center

Mosque /  
Church

Tourist/economic  
services

restaurants

hotels

zoo

Recreation  
areas

Botanical  
garden

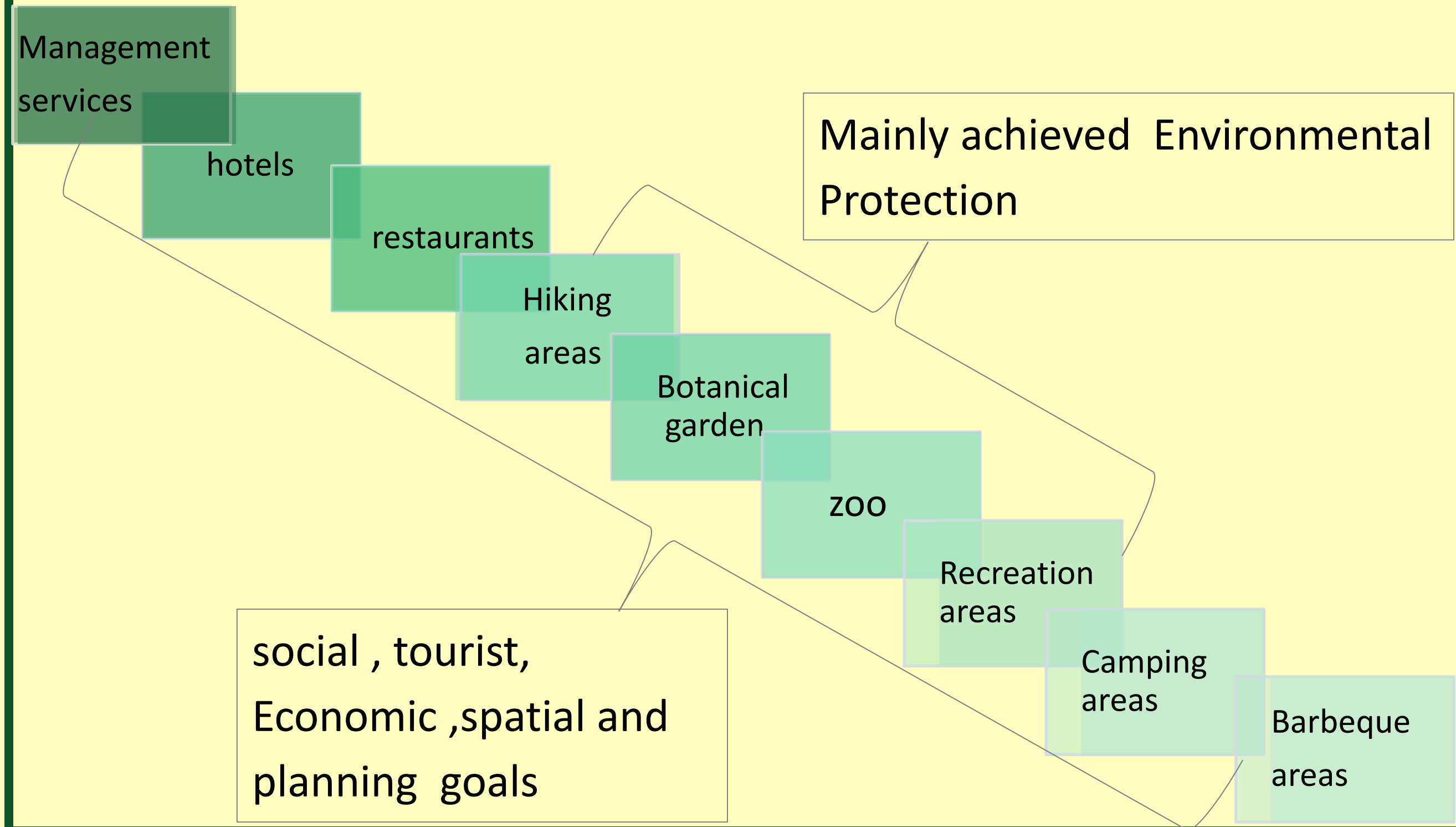
Hiking  
areas

Camping  
areas

Barbeque  
areas



# The relationship between the activities and goals

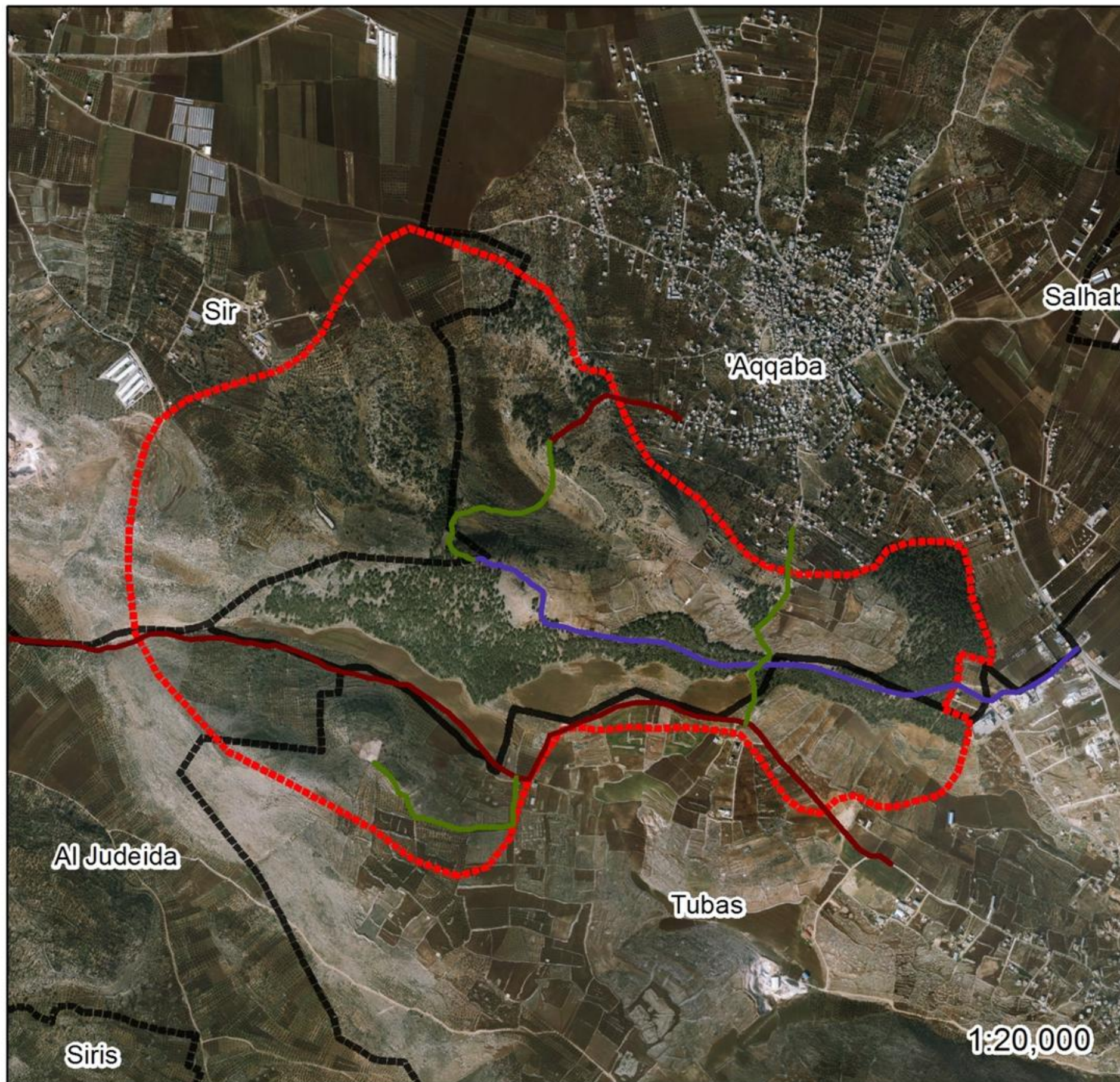




# **Concept plan**

## **1— road net work**





# Circulation



## Legend

road insaid

— main unpaved

— unpaved

— unpaved(Pedestrian)

⬜ Administrative boundaries

⬜ The proposed park

An-najah National University  
Faculty of Engineering and  
Information Technology  
Urban Planning Department




Done by: Ayat Khalilieh

The current  
situation



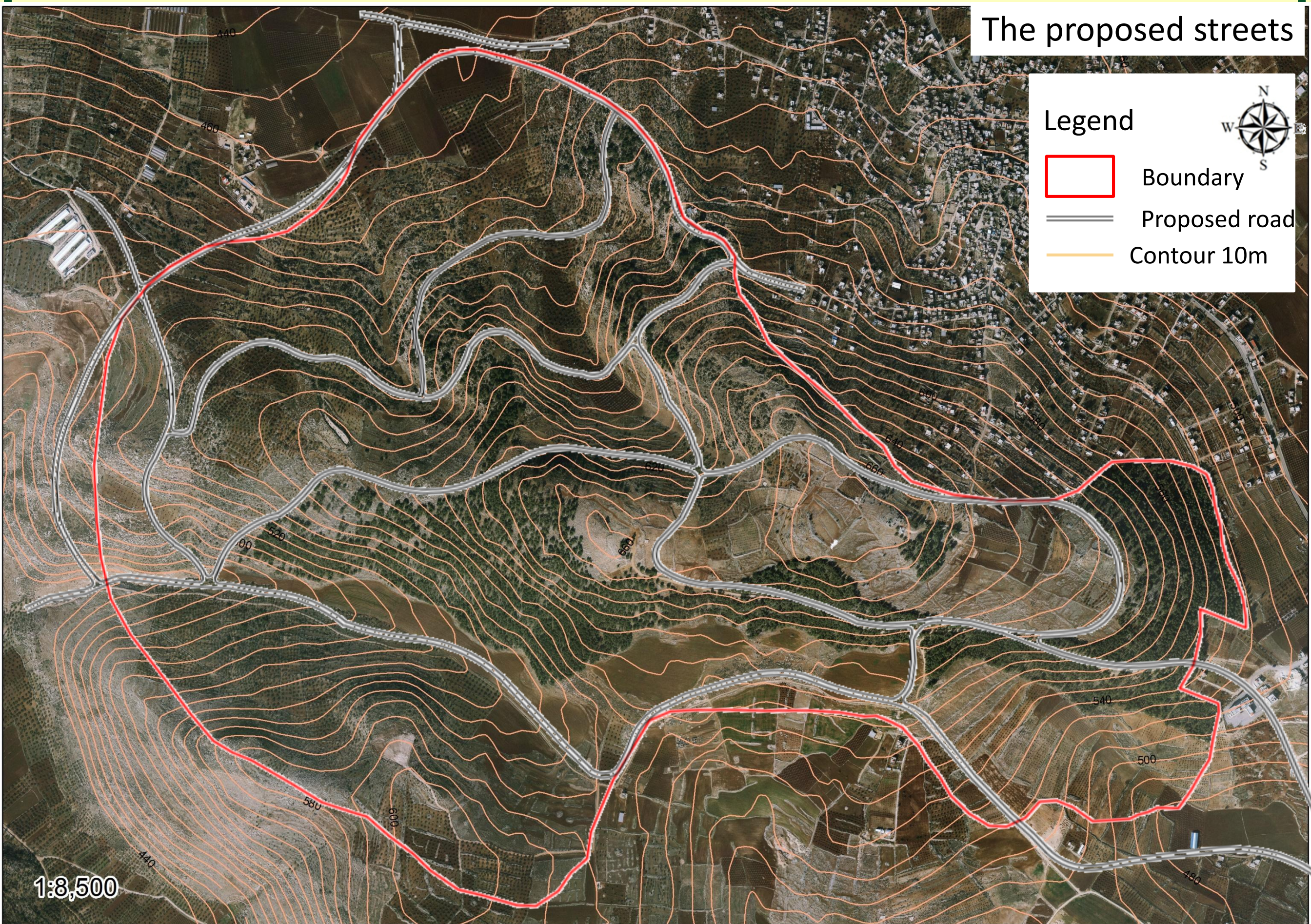
# The proposed streets

## Legend

-  Boundary
-  Proposed road
-  Contour 10m



1:3,500

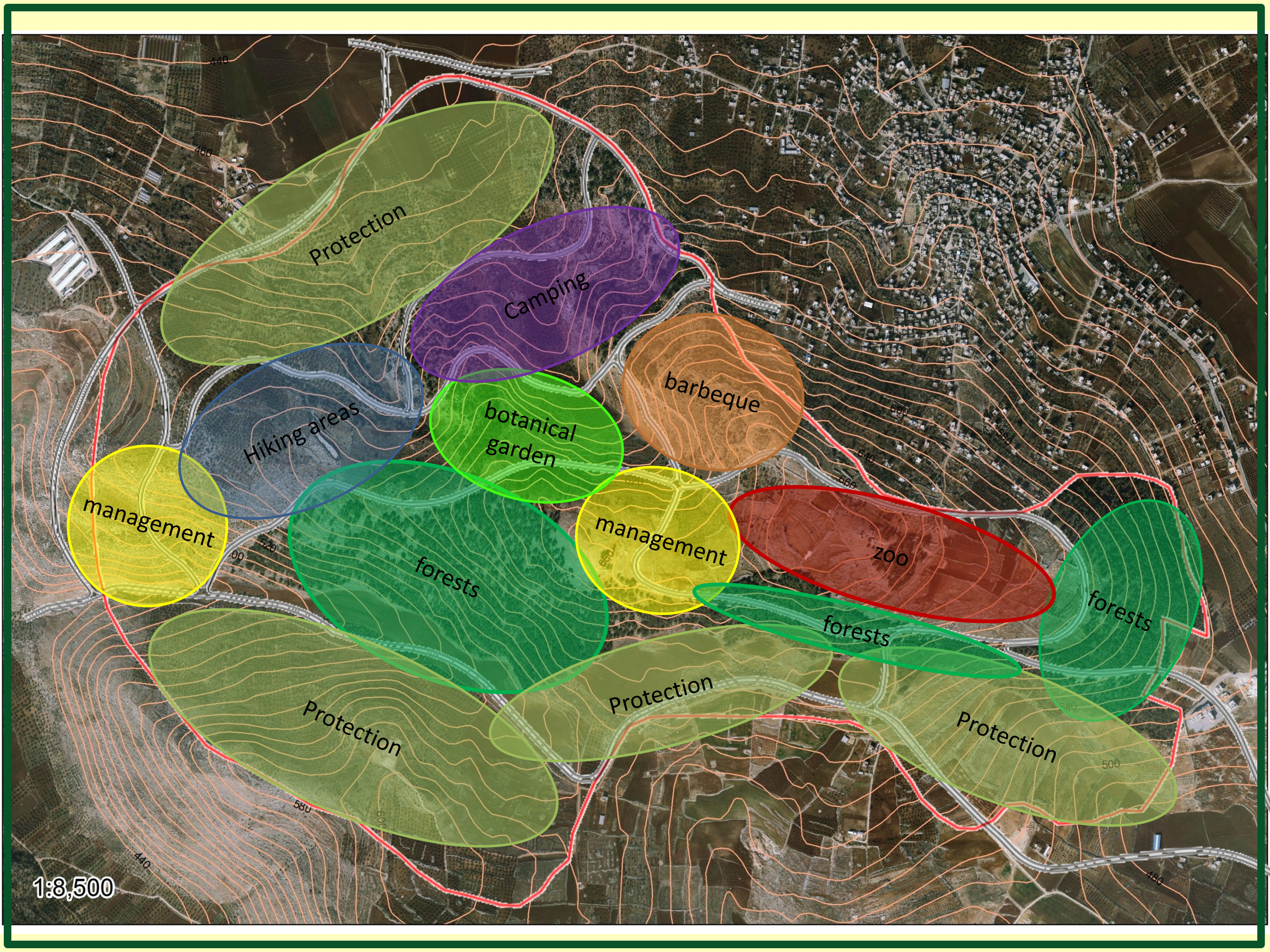




# **Concept plan**

## **2– functions**





1:3,500



# *Final design* *Master plan*

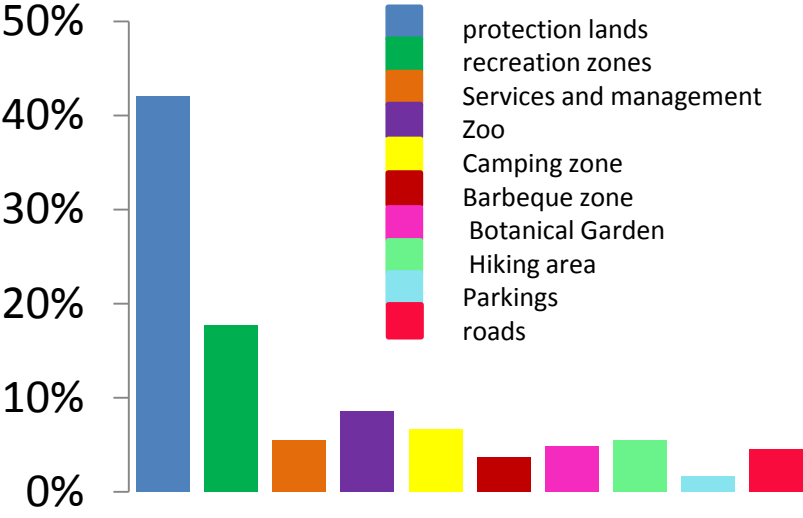
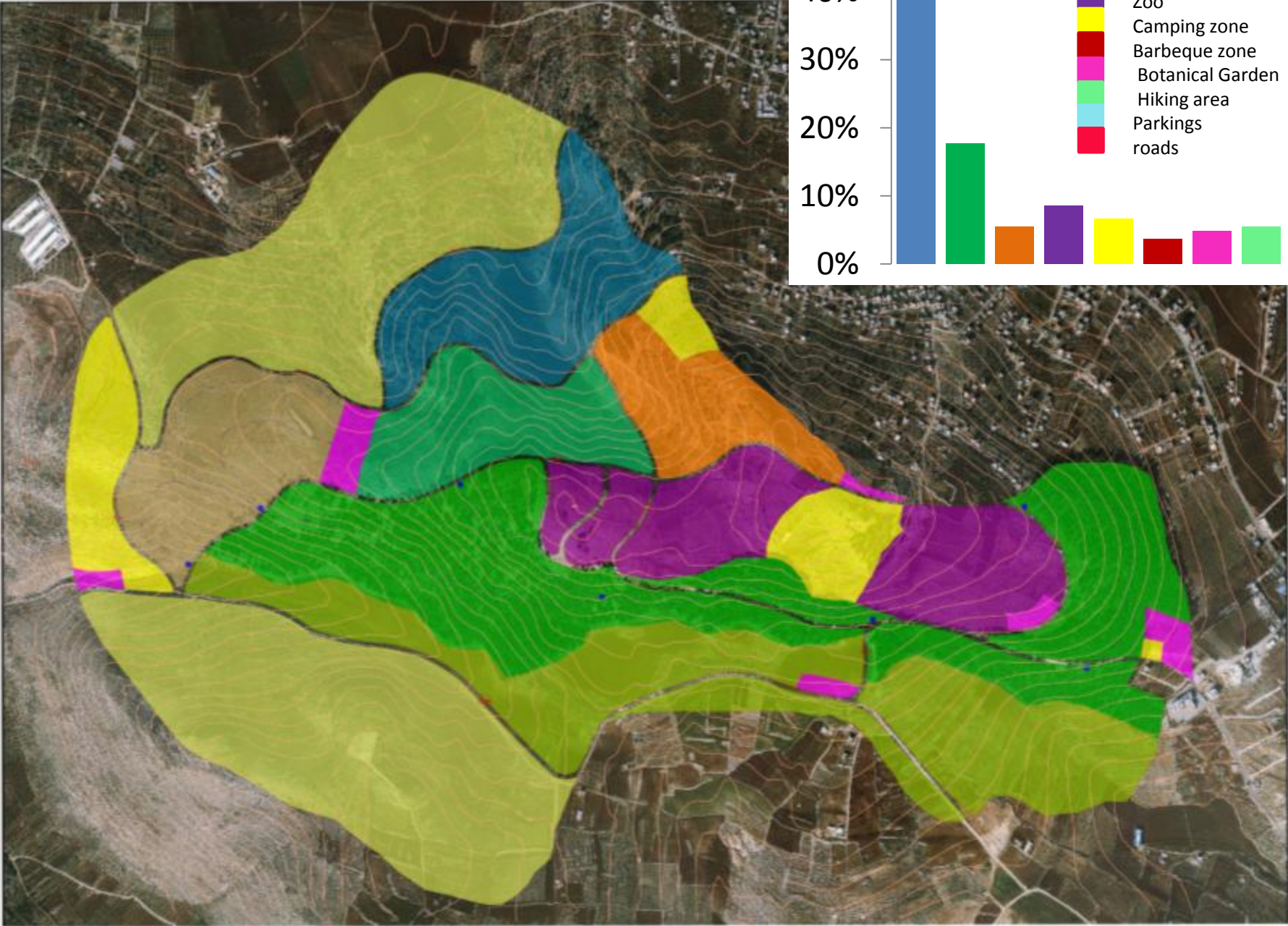
# Master Plan National Park(Tubas-Aqqaba)



scale 1:5000  
Total area = 3948 dunum



Graduation Project  
National Park (Tubas-Aqqaba)  
Done by: Ayat Khalilieh





***Detailed plan***  
**(a part of the zoo)**



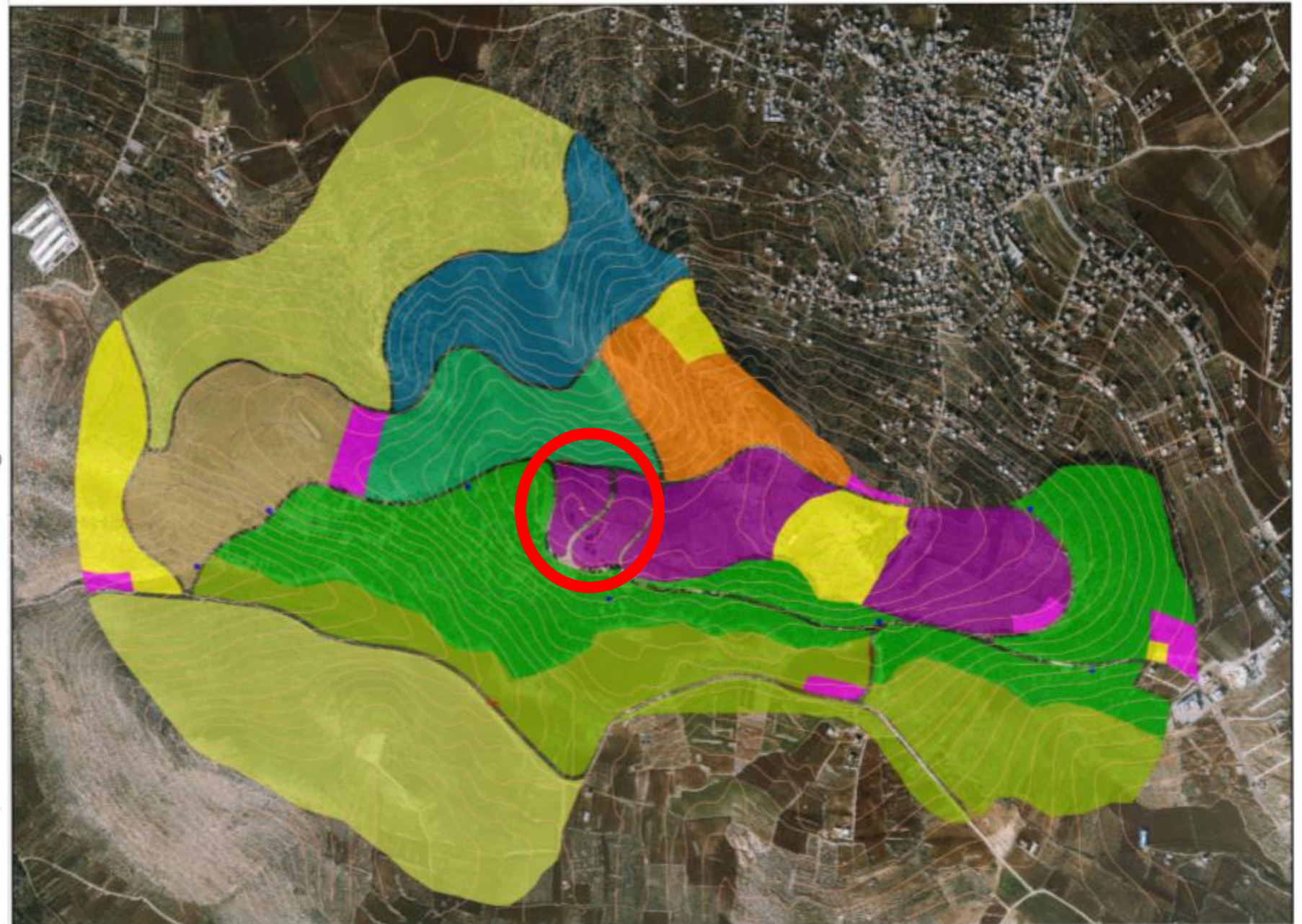
# Master Plan National Park(Tubas-Aqqaba)



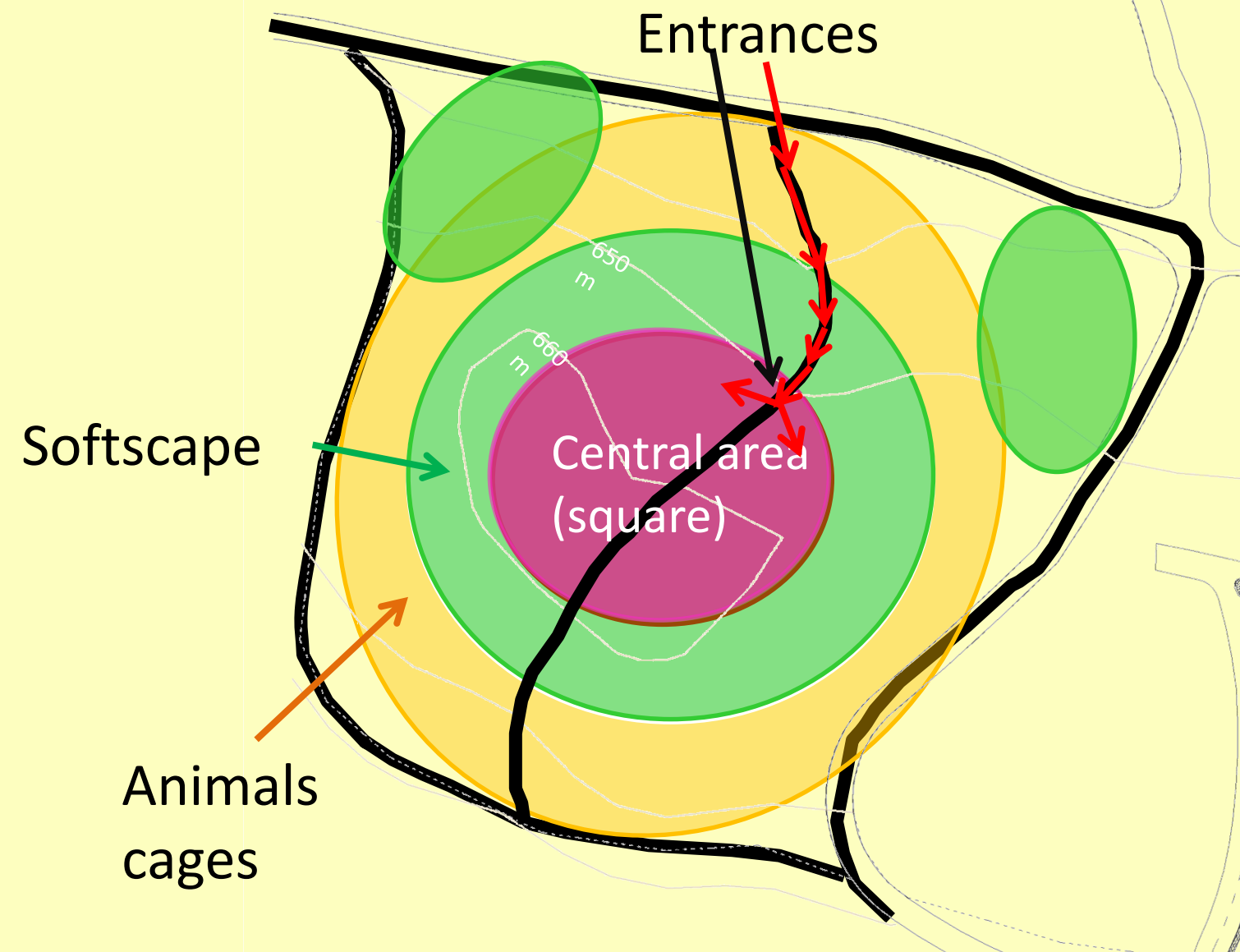
scale 1:5000  
Total area = 3948 dunum



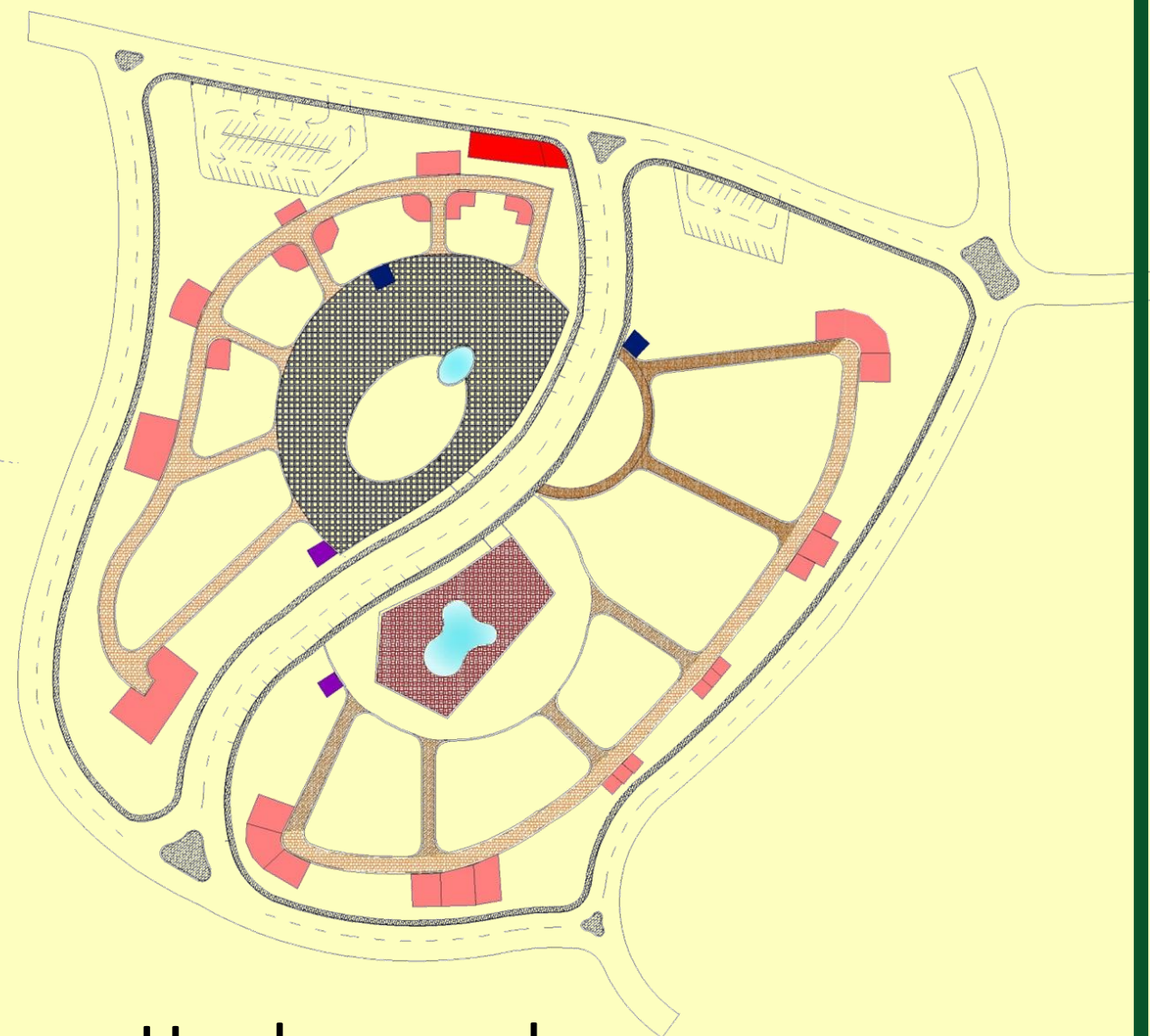
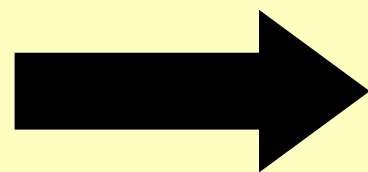
Graduation Project  
National Park (Tubas-Aqqaba)  
Done by: Ayat Khalilieh







Concept plan



Hardscape plan



# detailed plan (zoo)







Thanks!

