

International Parliament

First, I located my project on a site which is between Jerusalem and Ramallah. Jerusalem is on the South and Ramallah is on the North. So that it's an entrance for both main Palestinian cities. And it's also located near a Roman old castle, which is a traditional important place for tourists.

As the International Parliament is for people and only for people, in my project, I started to think in a design that is flexible and comfortable for the people, so I took my way away at the straight bold lines, and stick to the flexible curved lines. My concept is keeping the main parliament circular hall with two curved arms, which are wide from a side and thicker from the other side, to feel the continuity and walking around the main hall without stepping, so this will make the design more comfortable for the people.

I didn't want a typical parliament hall, so, I put it in the center with a huge glass sphere covering it. It wishes to create a welcoming world, covering light and shade, ventilation and rain. It is both a calm and complex place, and I distinguish all other functional areas in the middle, so that it's very good when to separate parliament members, with pavilions and with journalists and every part of them has different sized of circulation to have.



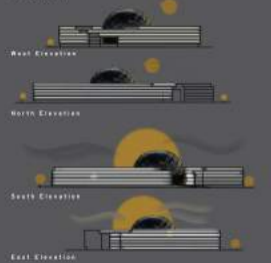
Graduation Project

Presented by: Zeynep Sagt Al-Salt
Presented to: Dr. Khalid Gambia & Dr. Hassan Al-Qadi

It is a project headed by a major symbol of Arab architecture: the dome. But here, with its evident shift from traditional, the dome is a modern proposal. The pattern is repeated at various sides and angles in three layers. The result is a cinematic effect as the sun's path progresses throughout the day.

The Parliament design is a collaboration between traditional design and modern construction techniques. The tranquil environment encourages visitors to enjoy the ever-changing relationship between the sun and the dome. The complex engineering concept made this Parliament one of the most innovative and challenging Parliament projects to be built in recent times.

Elevations



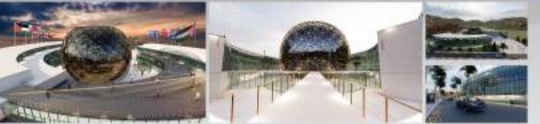
Plans



Location



3D exterior sheets



Sections



Section A-A Section B-B

3D interior sheets

