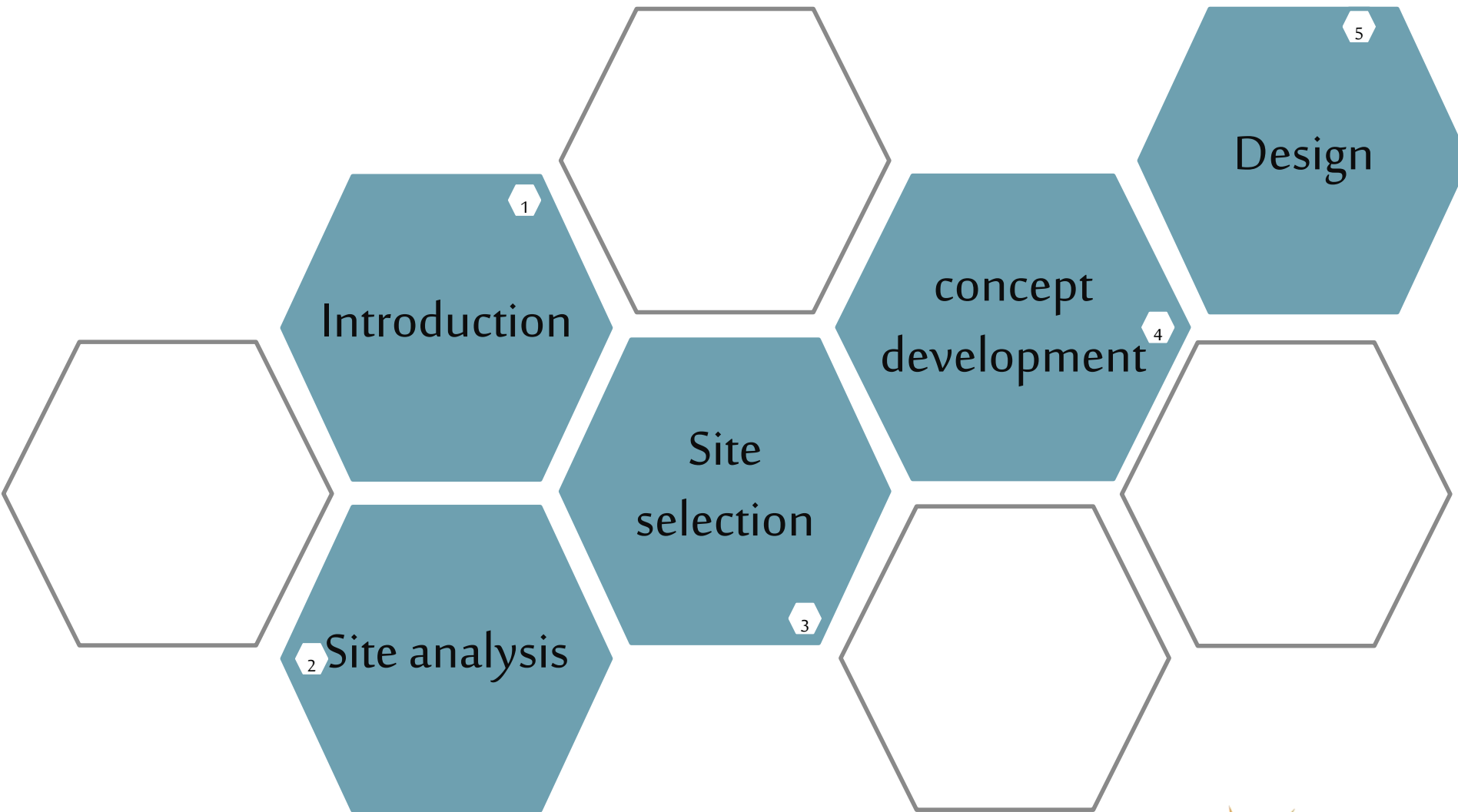




PLANNING TECHNICAL AND VOCATIONAL
TRAINING AND EDUCATION CAMPUS

Noor Nabeel Surakji

Content :



Introduction:

Planning Technical and Vocational Education and

Training Campus

- design the physical facilities

- scientific trainees

- educational preparation
- acquisition of skills
- professional knowledge

- practical skills
- theoretical knowledge

Site selection:

There is three standard for planning campuses :

Increasing the number of class ,offices ,laboratories...ect

Increasing the capacity of the institution by increasing the studying hours,
courses number

Planning for new buildings or new centres

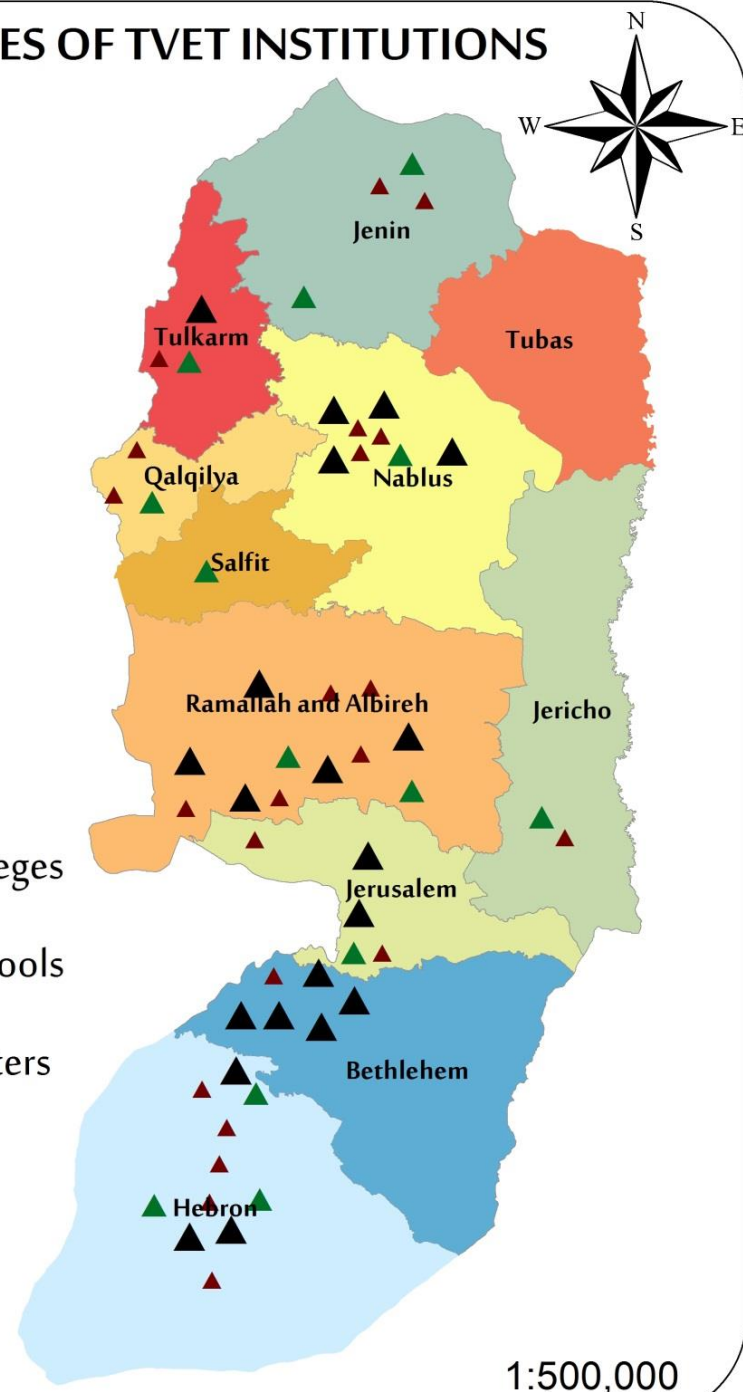
Site selection:

Governorate Institutions	colleges	schools	Centers	Total
Nablus	4	1	3	8
Ramallah And Bireh	5	2	5	12
Jenin	-	2	2	4
Salfit	-	1	-	1
Qalqilya	-	1	2	3
Hebron	3	3	5	11
Tubas	-	-	-	0
Jericho	-	1	1	2
Bethlehem	5		1	6
Tulkarem	1	1	1	3
Jerusalem	2	1	2	5

TYPES OF TVET INSTITUTIONS

Legend

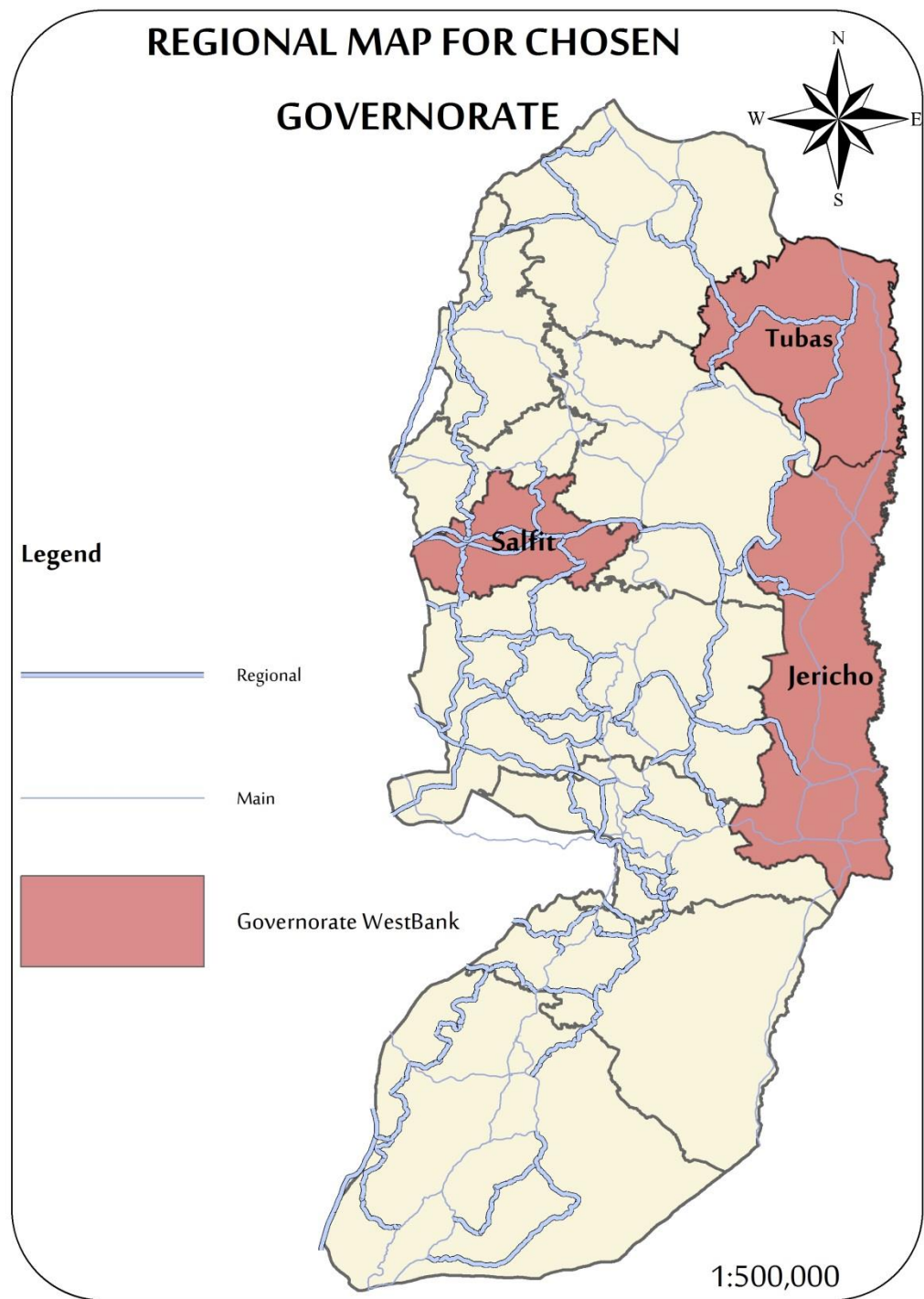
- ▲ colleges
- ▲ schools
- ▲ centers



1:500,000

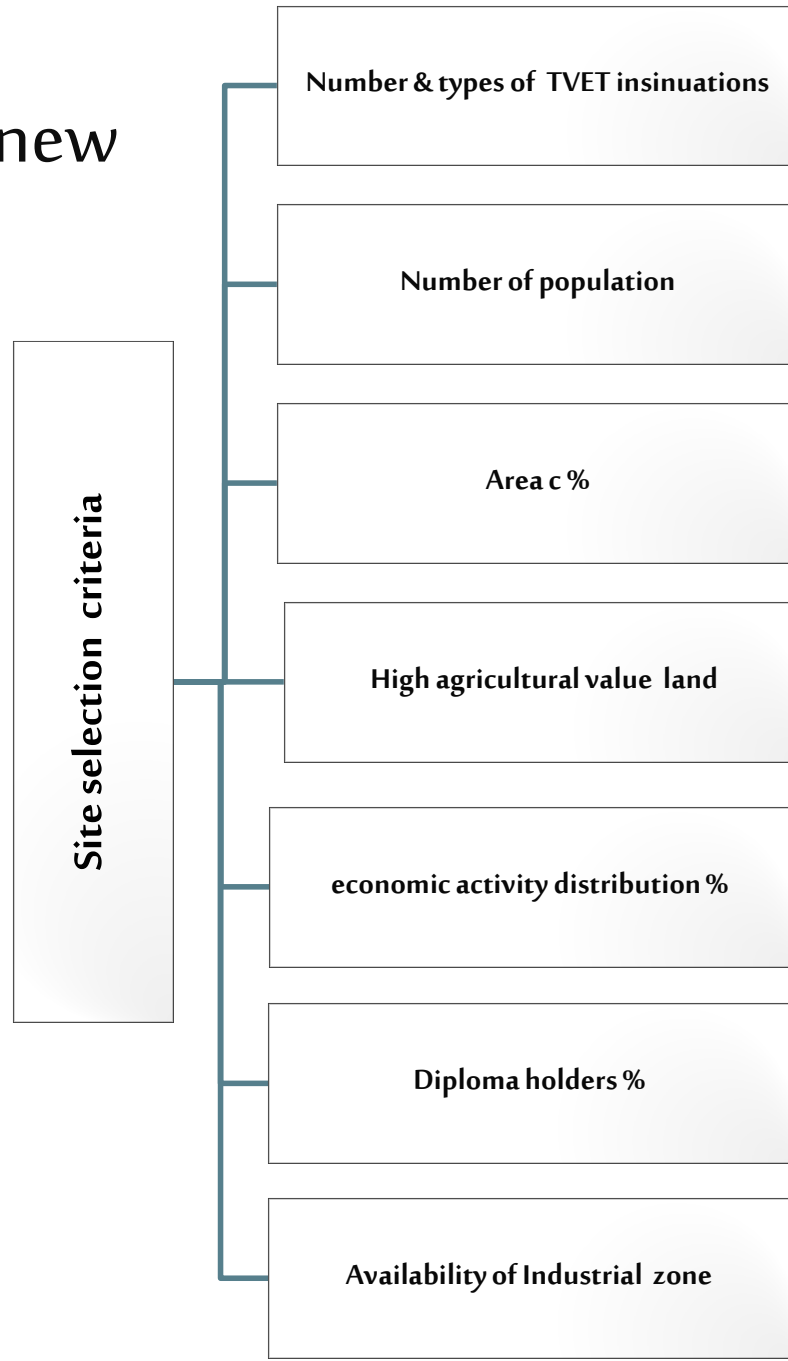
Site selection:

The chosen governorate :



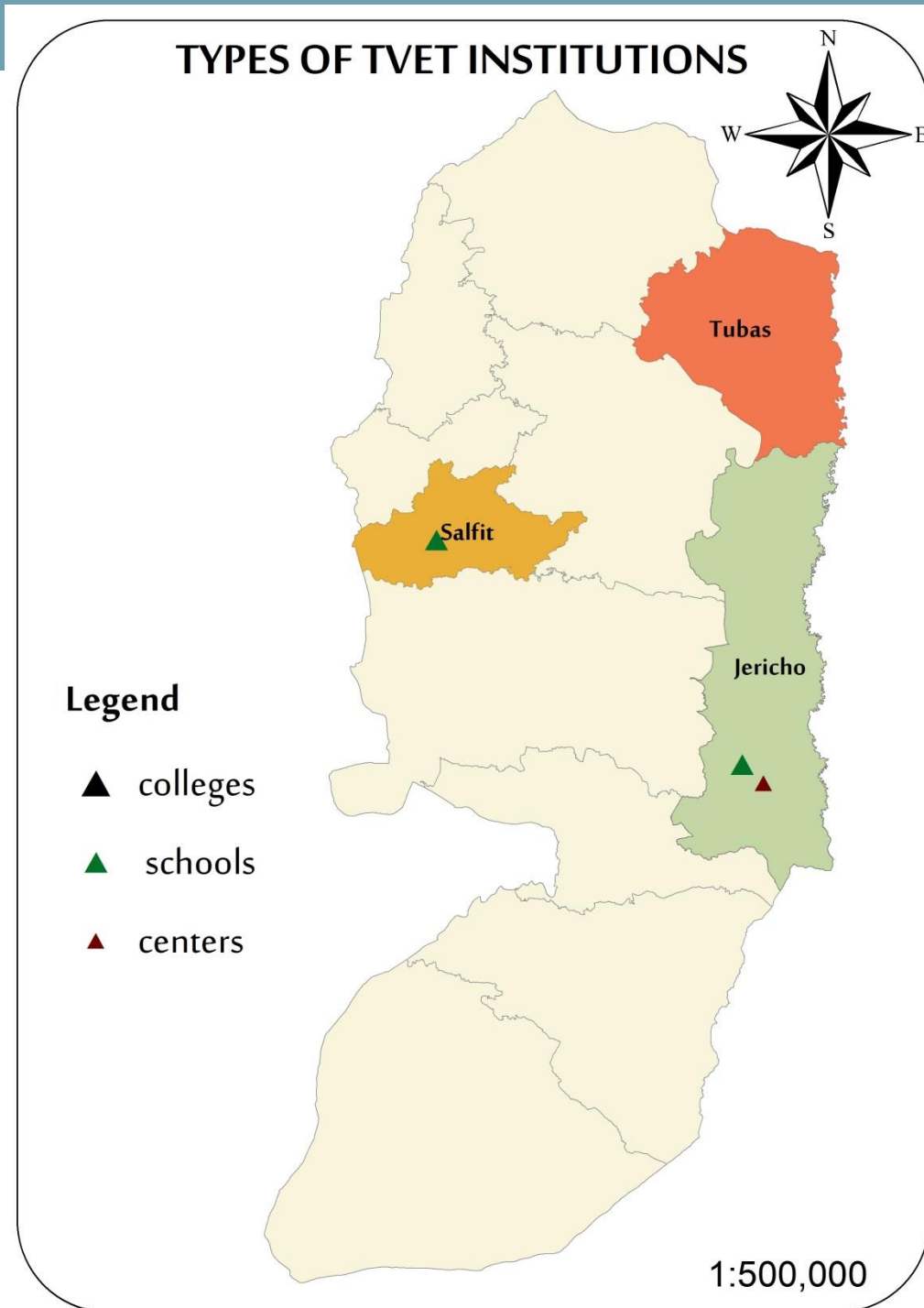
Site selection:

Criteria for Planning new campus :



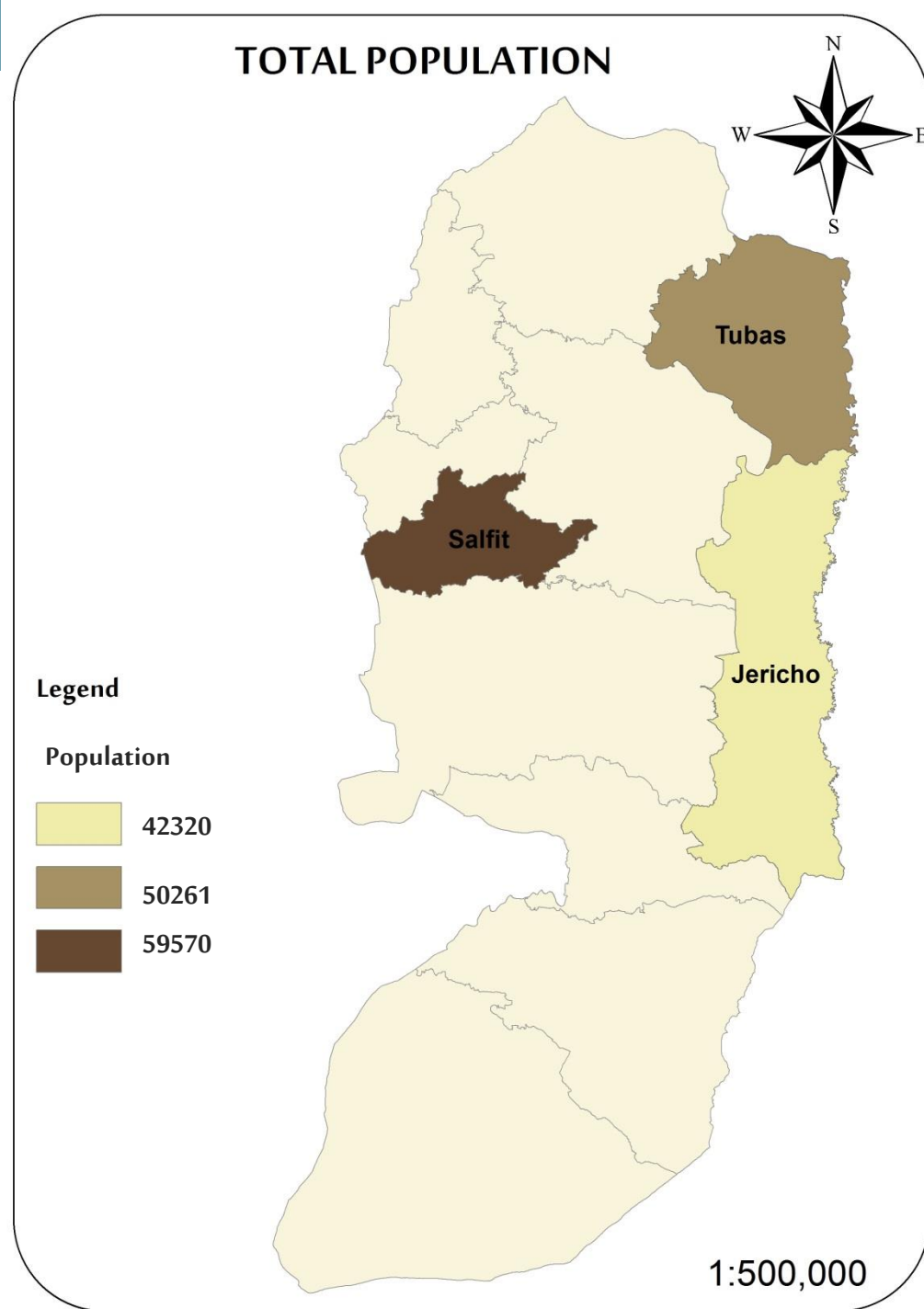
Site selection:

The Number & the type of
TVET institutions :



Site selection:

Total Population:



Site selection:

Percentage of Area C & Settlements:

Governorate	Area C & settlements percentage
Salfit	91%
Jericho	80%
Tubas	81%

GEOPOLITICAL CONDITION

Legend



Area A



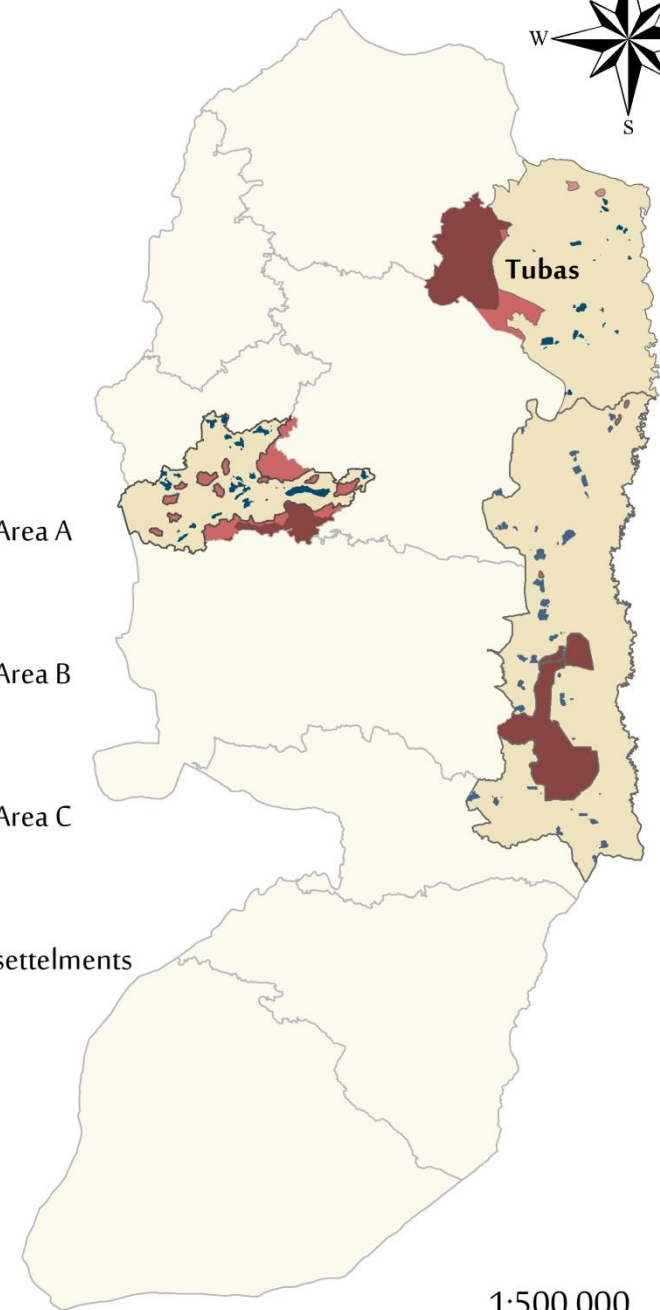
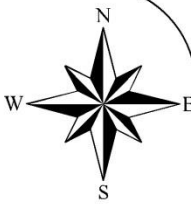
Area B



Area C



settelments

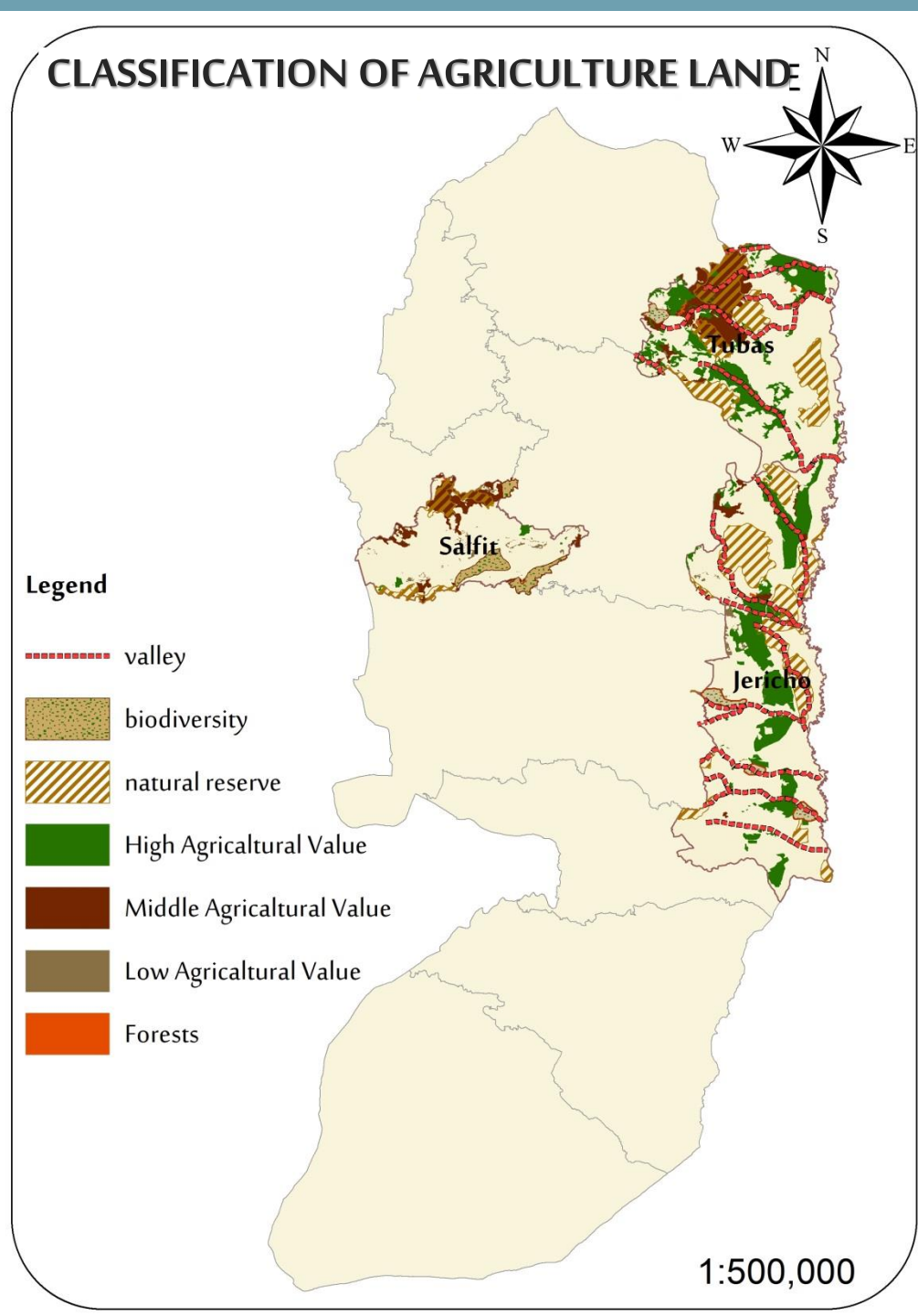


1:500,000

Site selection:

High agricultural value,
biodiversity and natural
deserve :

Governorate	High agricultural value ,biodiversity and natural deserve percentage
Salfit	35%
Jericho	19%
Tubas	41%



Site selection:

Percentage Distribution of Employed Economic Activity :

Distribution of Employed Economic Activity percentage

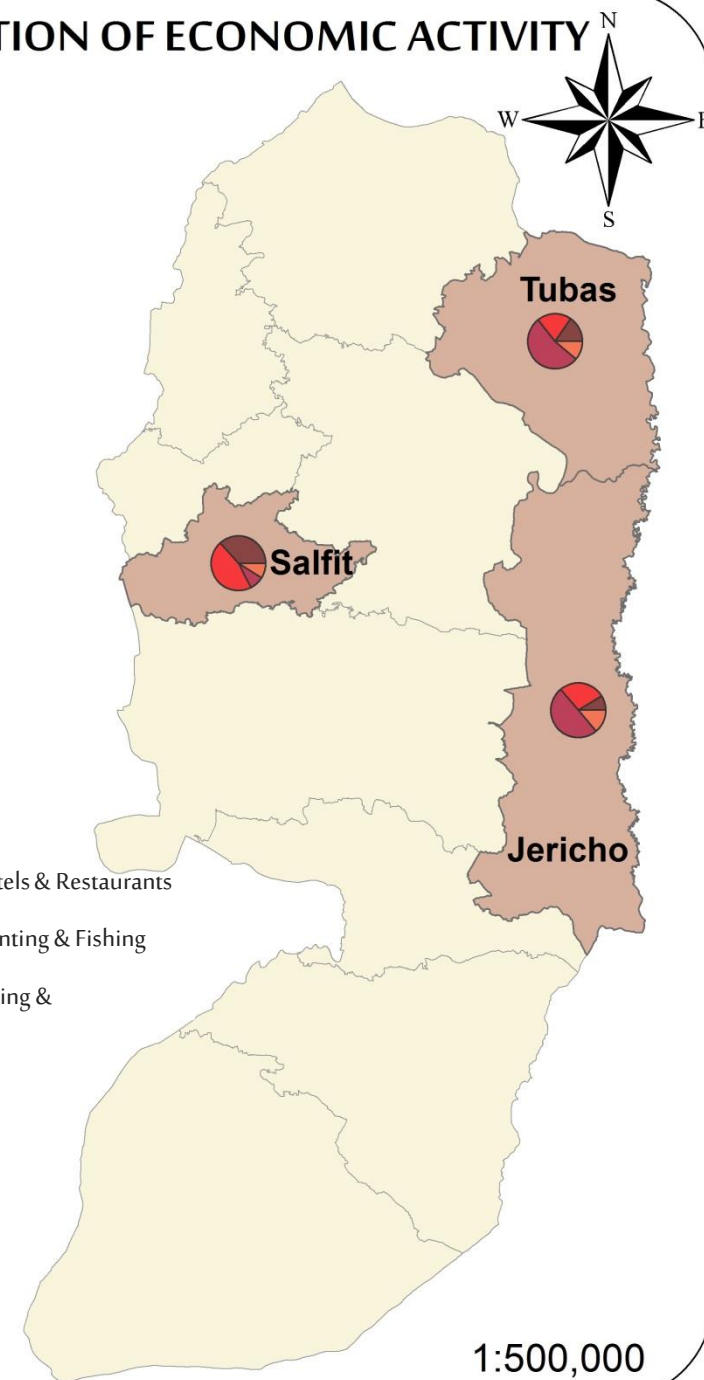
Governorate	Agriculture, Hunting & Fishing	Mining, Quarrying & Manufacturing	Construction	Commerce, Hotels & Restaurants
Salfit	4.8 %	4.8 %	20.0%	24.9 %
Jericho	31.5%	8.6%	5.5%	17.3%
Tubas	35.1 %	7.4%	10.1%	13.4%

DISTRIBUTION OF ECONOMIC ACTIVITY

Legend

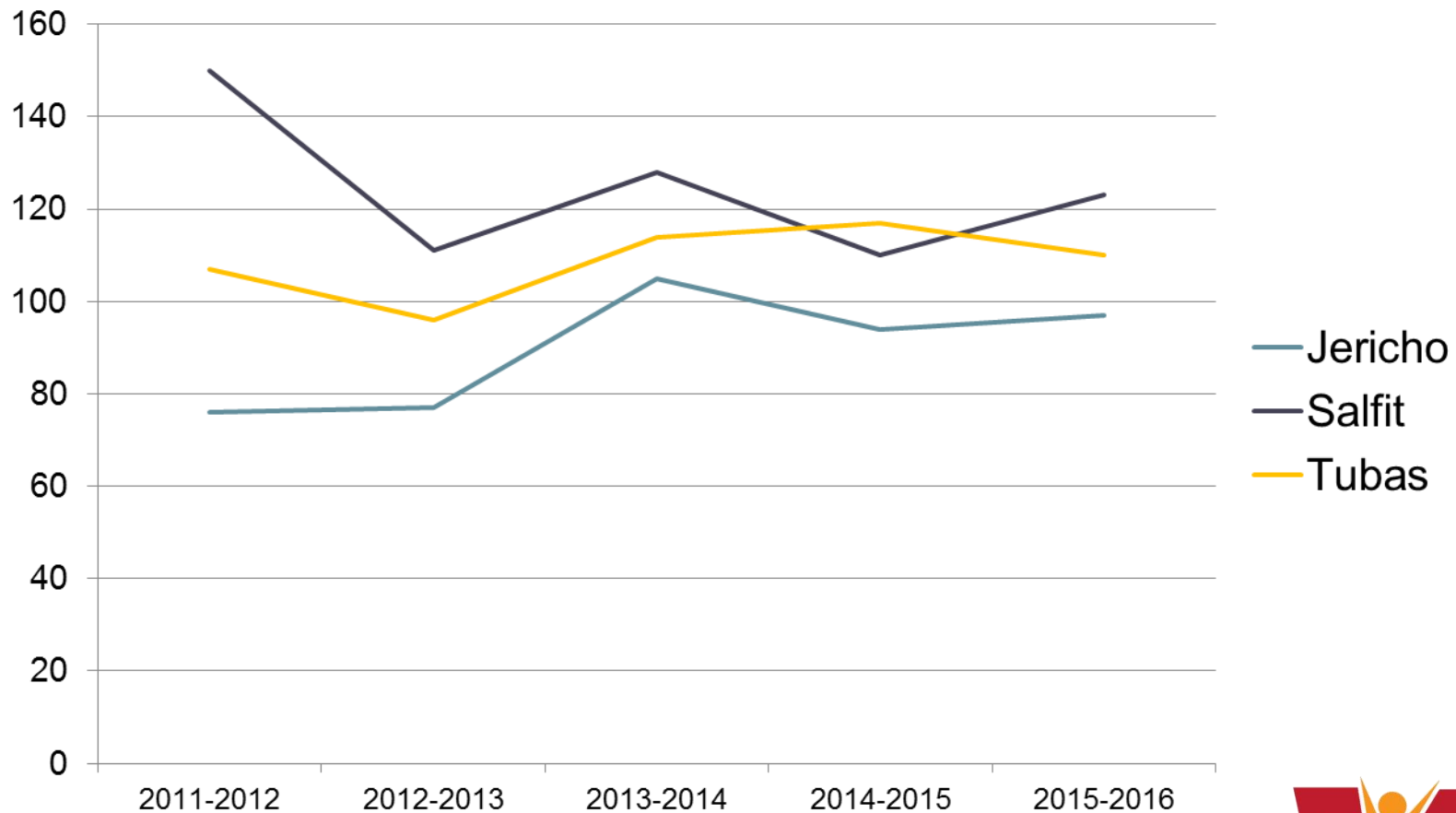


-  Construction
-  Commerce, Hotels & Restaurants
-  Agriculture, Hunting & Fishing
-  Mining, Quarrying & Manufacturing



Site selection:

NUMBER OF DIPLOMA REGISTERED STUDENTS IN MIDDLE COLLEGES AND UNIVERSITIES :



Evaluation

Criteria

Governorates	Number of population	Number of TVET insinuations	High agricultural value ,biodiversity and natural deserve %	Diploma holders %	Number of diploma registered students	Area c %	Percentage distribution of economic activity				Availability of Industrial zone	Total
							Agriculture, Hunting & Fishing	Mining, Quarrying & Manufacturing	Construction	Commerce, Hotels & Restaurants		
	3	3	3	1	2	3	2	2	2	2	2	
Salfit	3	1	1	1	3	1	1	1	3	3	3	47
Jericho	2	2	2	3	1	3	2	3	1	2	1	50
Tubas	1	3	3	2	2	2	3	2	2	1	3	55

Governorates	Number of population	Number of TVET insinuations	High agricultural value ,biodiversity and natural deserve %	Diploma holders %	Number of diploma registered students	Area c %	Percentage distribution of economic activity				Availability of Industrial zone
							Agriculture, Hunting & Fishing	Mining, Quarrying & Manufacturing	Construction	Commerce, Hotels & Restaurants	
Salfit	72,279	1	35%	4.1	622	91%	4.8	4.8	20.0	24.9	Yes
Jericho	66,854	2	19%	2.5	449	80%	31.5	8.6	5.5	17.3	Yes
Tubas	53,562	0	41%	3.6	544	81%	35.1	7.4	10.1	13.4	No

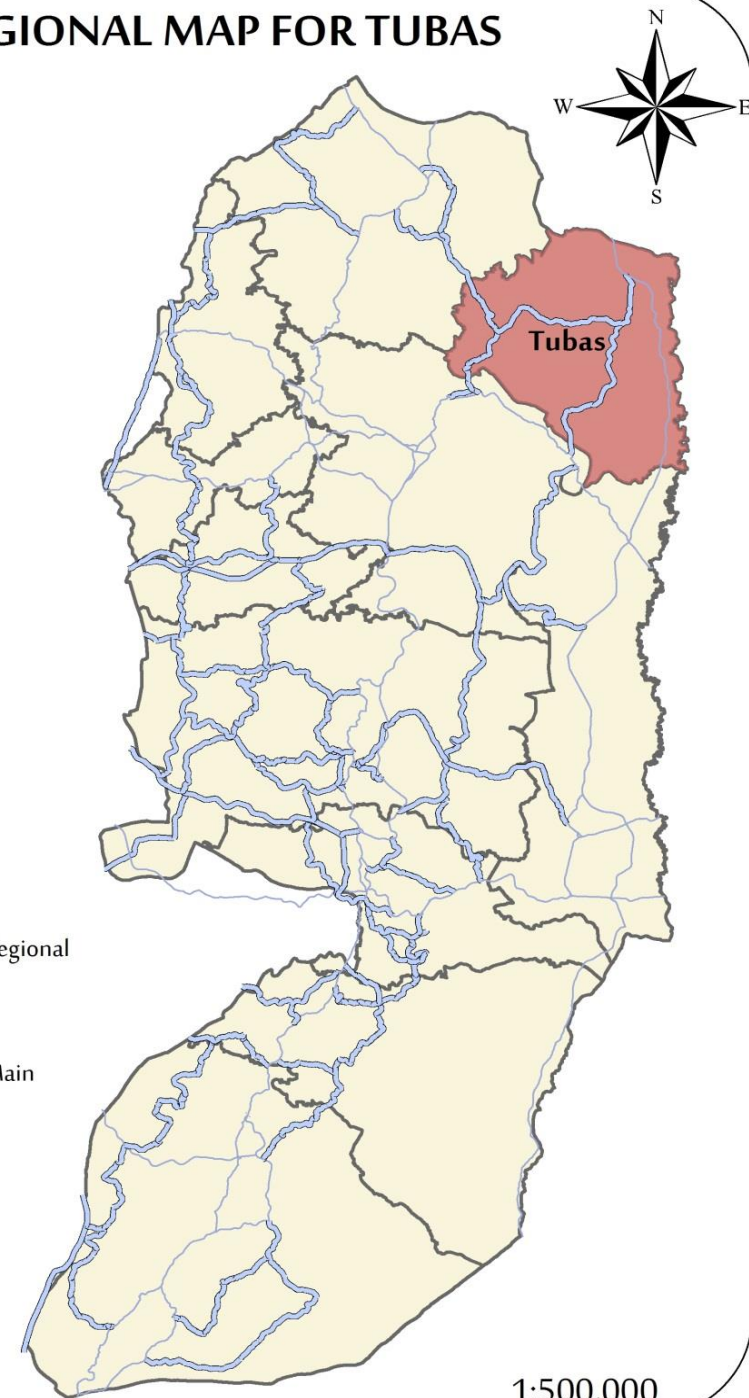
Site selection:

TUBAS GOVERNORATE

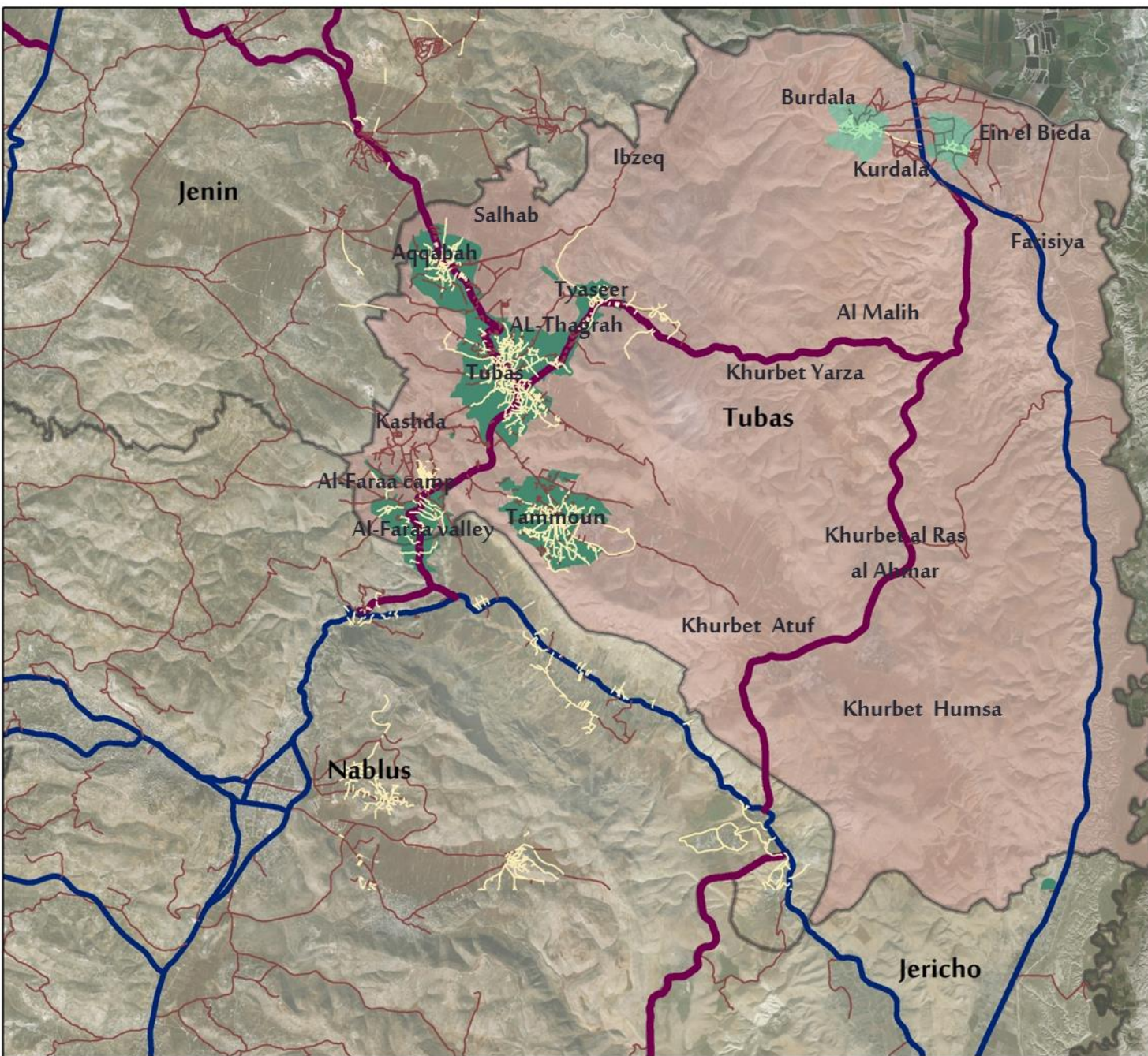
REGIONAL MAP FOR TUBAS

Legend

- Regional
- Main



1:500,000



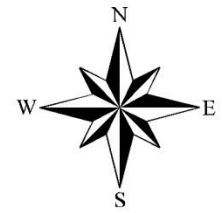
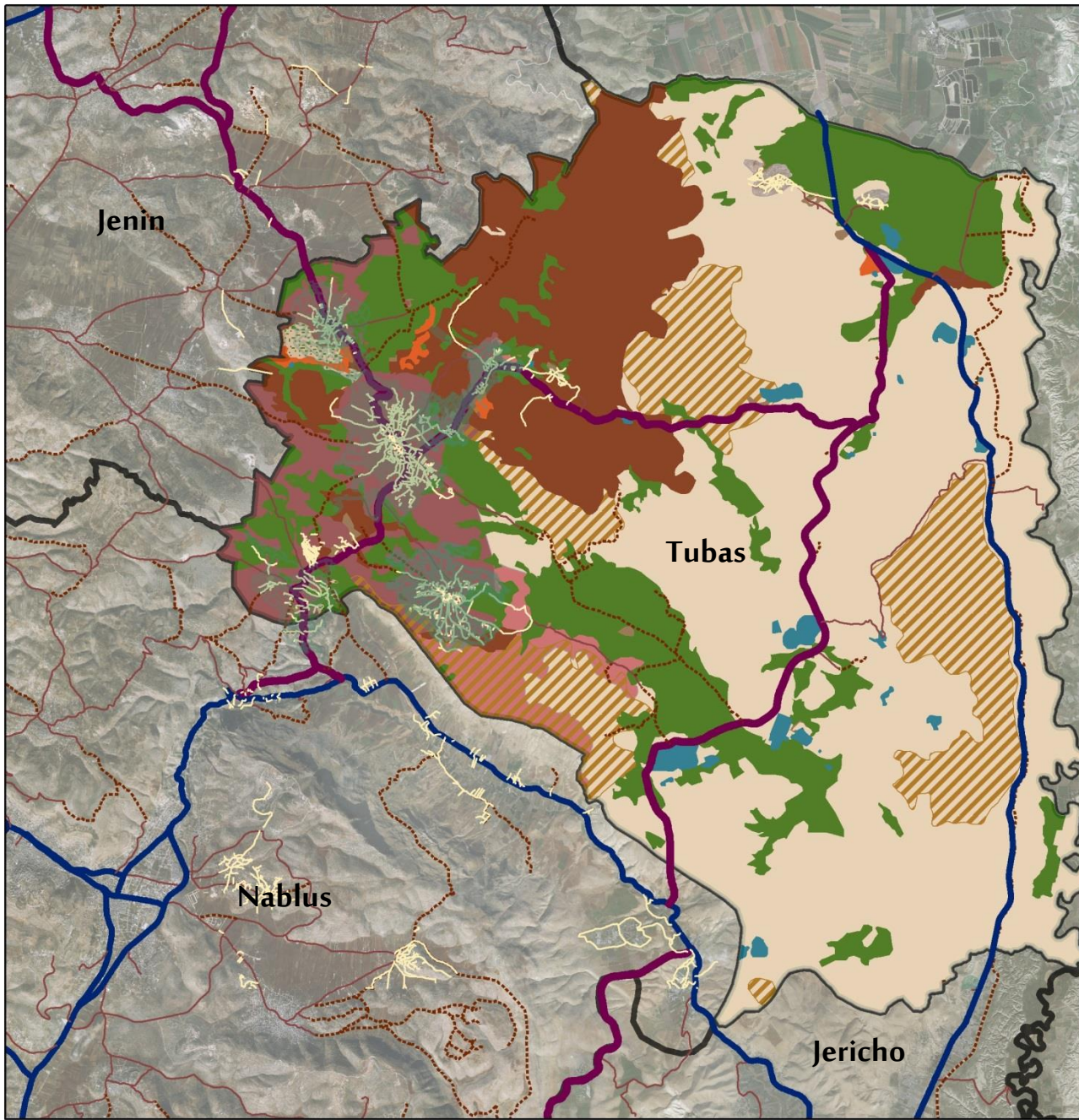
TUBAS REGIONAL MAP



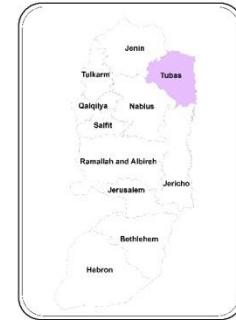
Legend

- internal
- Local
- Main
- Regional
- Tubas communities

1:150,000



TUBAS GOVERNORATE

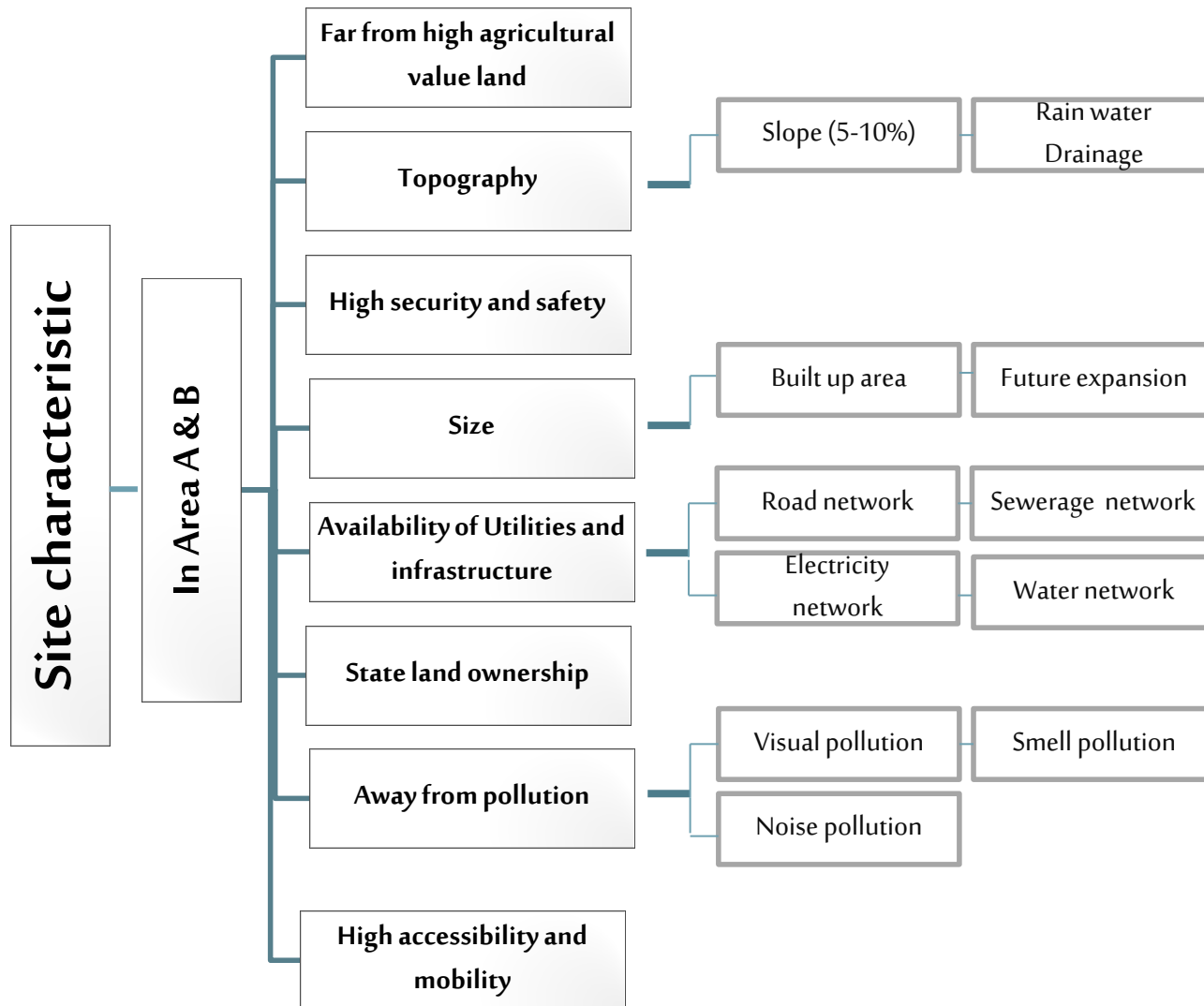


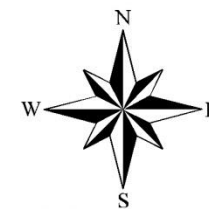
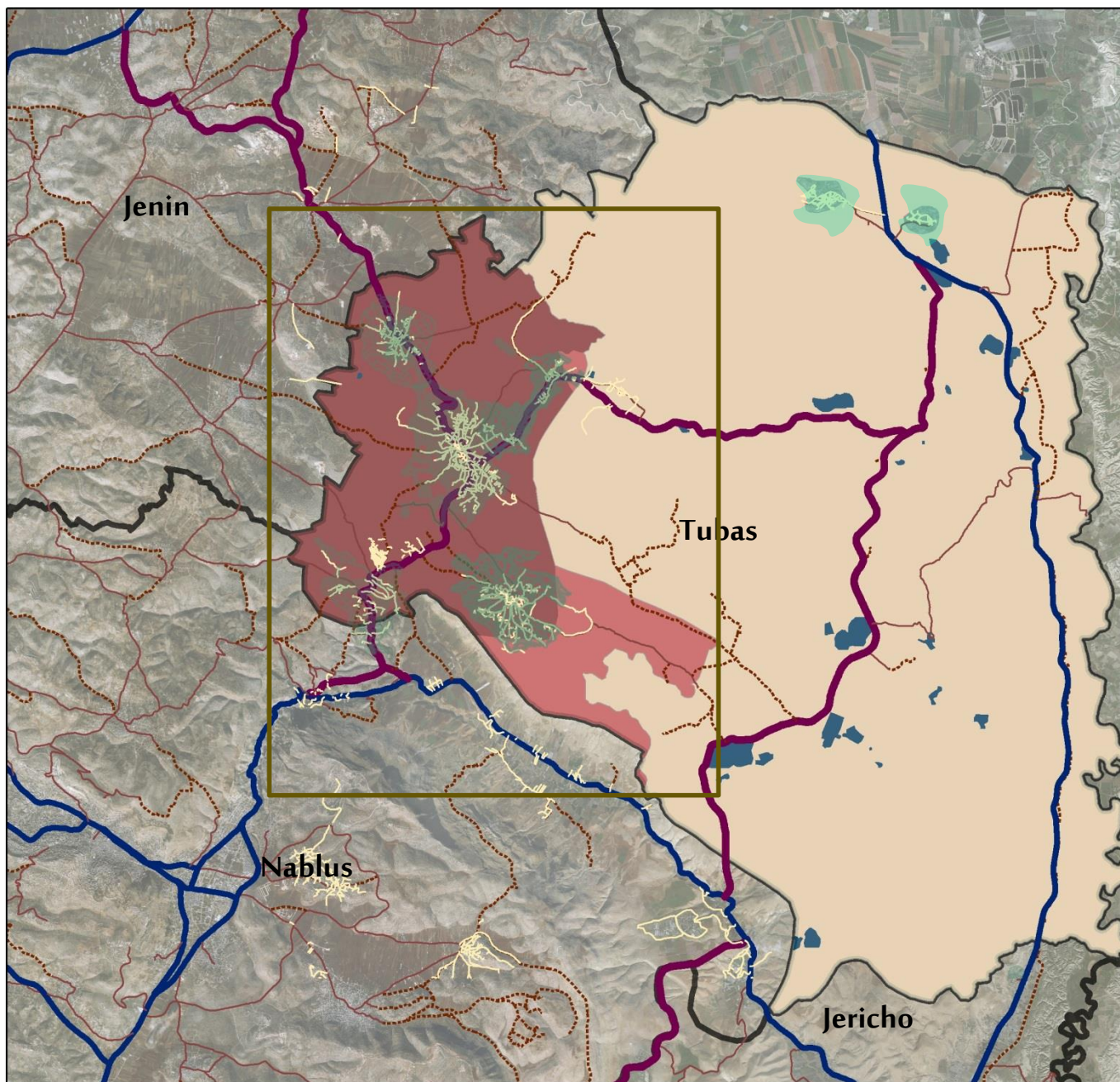
Legend

- | | |
|------------|---------------------------|
| internal | Natural reserve |
| Dirt | Biodiversity |
| Local | High Agricultural Value |
| Main | Middle Agricultural Value |
| Regional | Low Agricultural Value |
| Area A | forests |
| Area B | Tubas communities |
| Area C | |
| Settlement | |

1:150,000

Site selection :





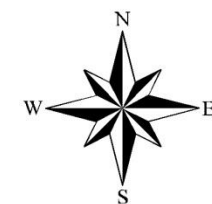
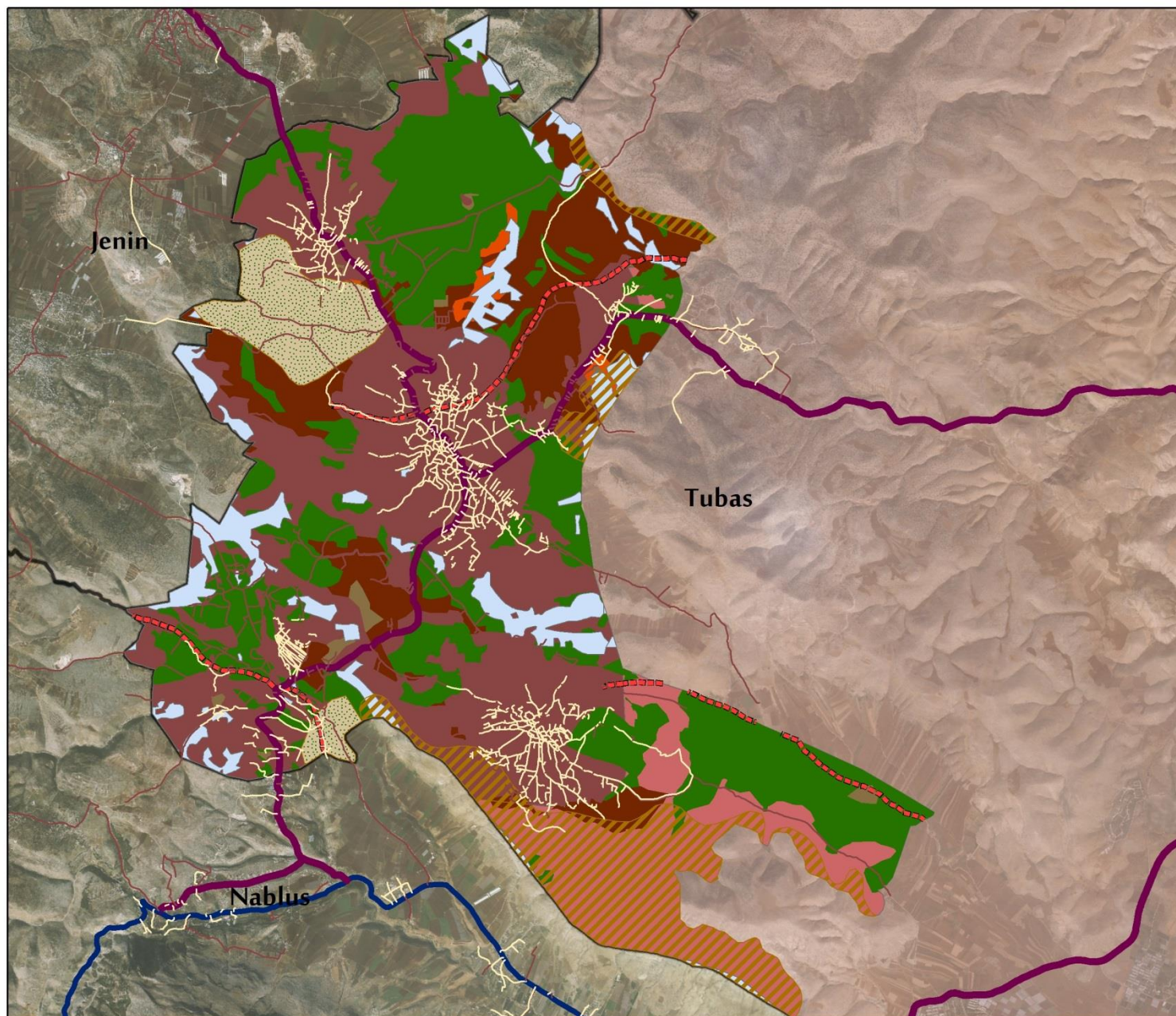
POLITICAL MAP FOR TUBAS GOVERNORATE



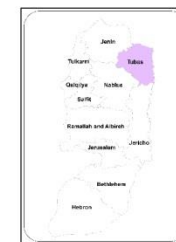
Legend

- internal
- Dirt
- Local
- Main
- Regional
- Area A
- Area B
- Area C
- Settlement
- Tubas communities

1:150,000



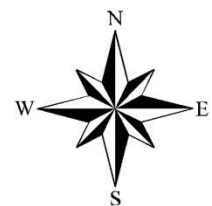
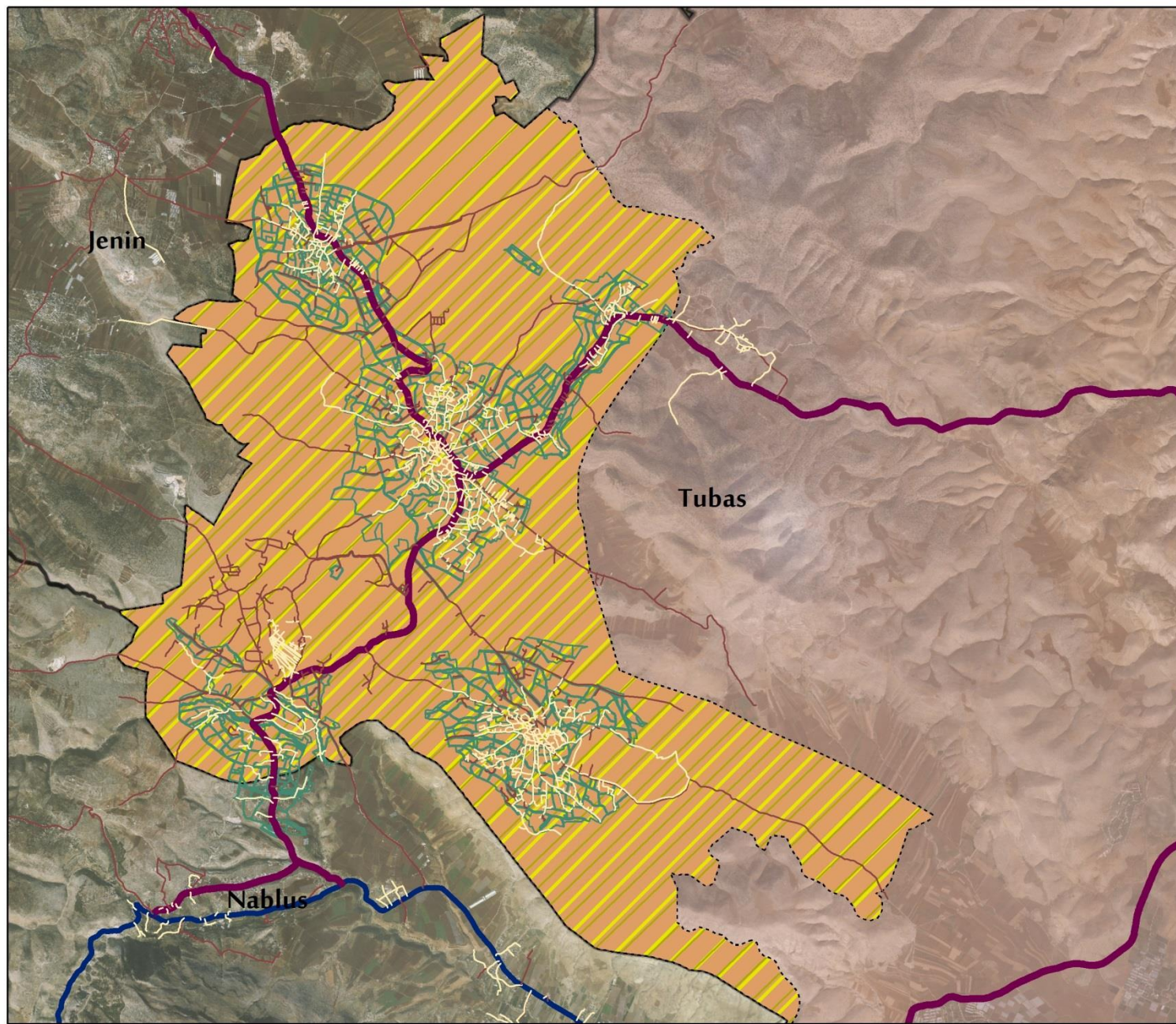
STUDY AREA



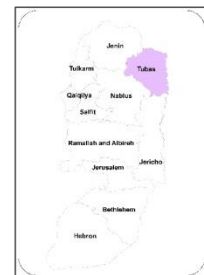
Legend

- internal
- Local
- Main
- Regional
- Valley
- Natural reserve
- Biodiversity
- State Lands
- High Agricultural Value
- Middle Agricultural Value
- Low Agricultural Value
- Forests

1:75,000



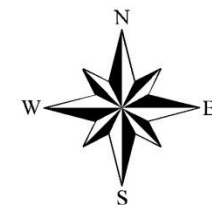
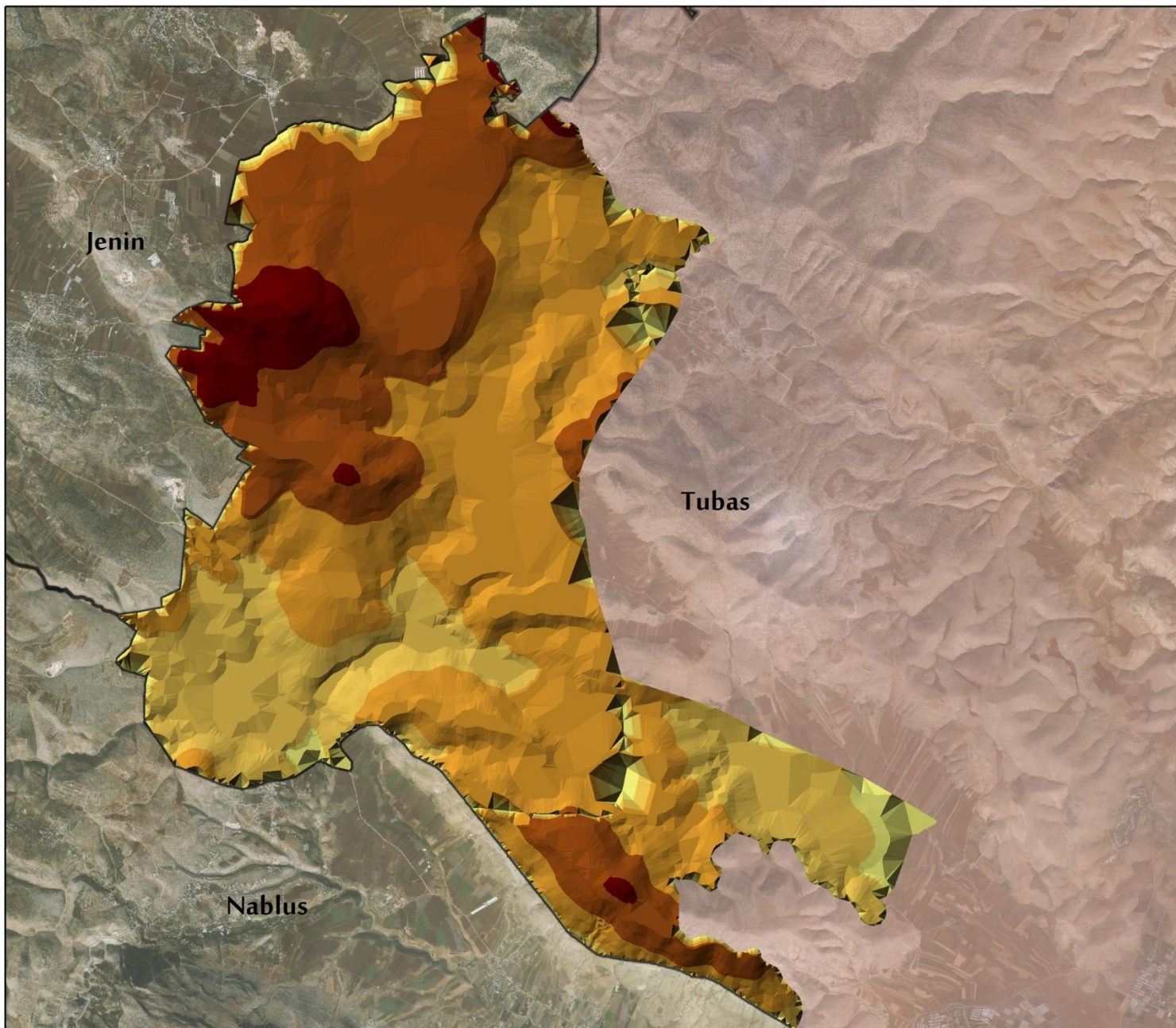
INFRASTRUCTURE MAP



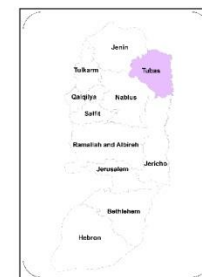
Legend

- internal
- Local
- Main
- Regional
- water network
- electricity network
- No sewerage network
- Tubas communities

1:75,000

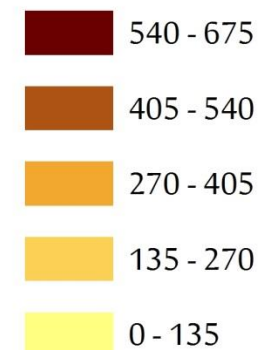


TOPOGRAPHIC MAP

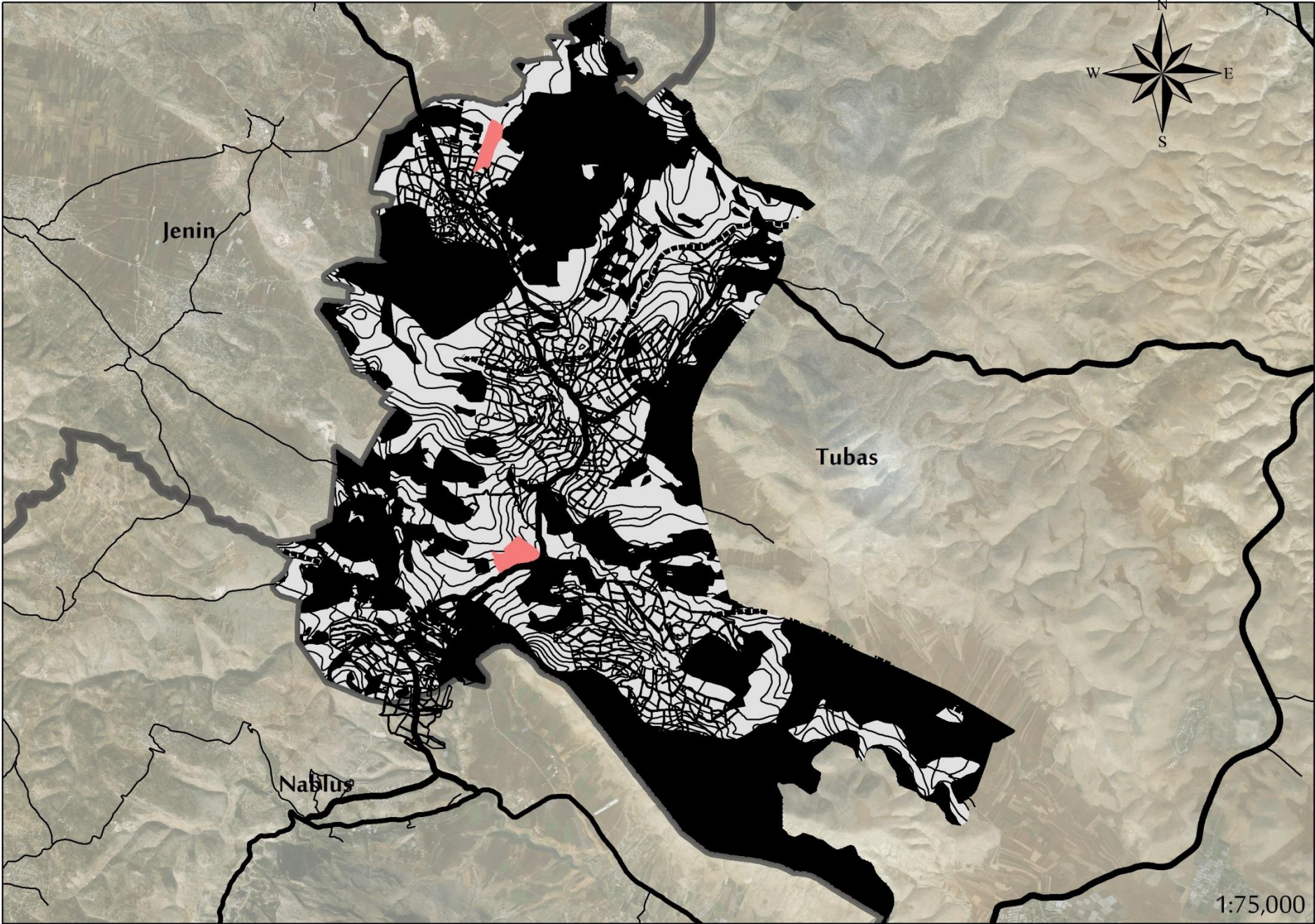


Legend

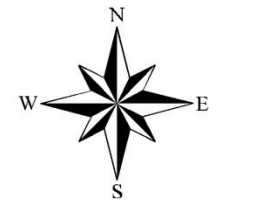
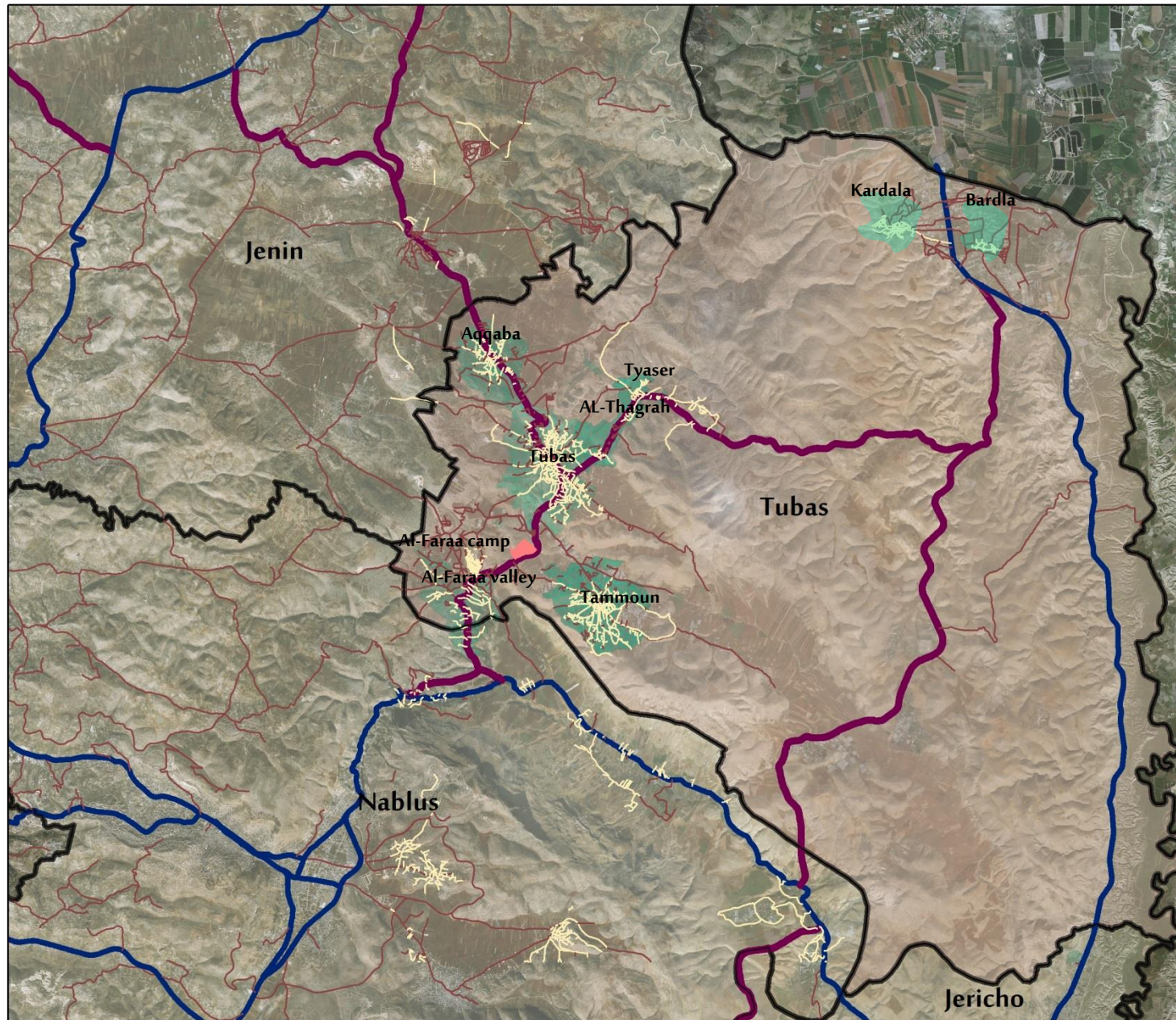
Elevation



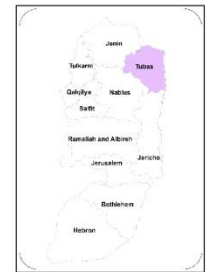
1:75,000



Site 1 analysis:



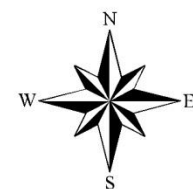
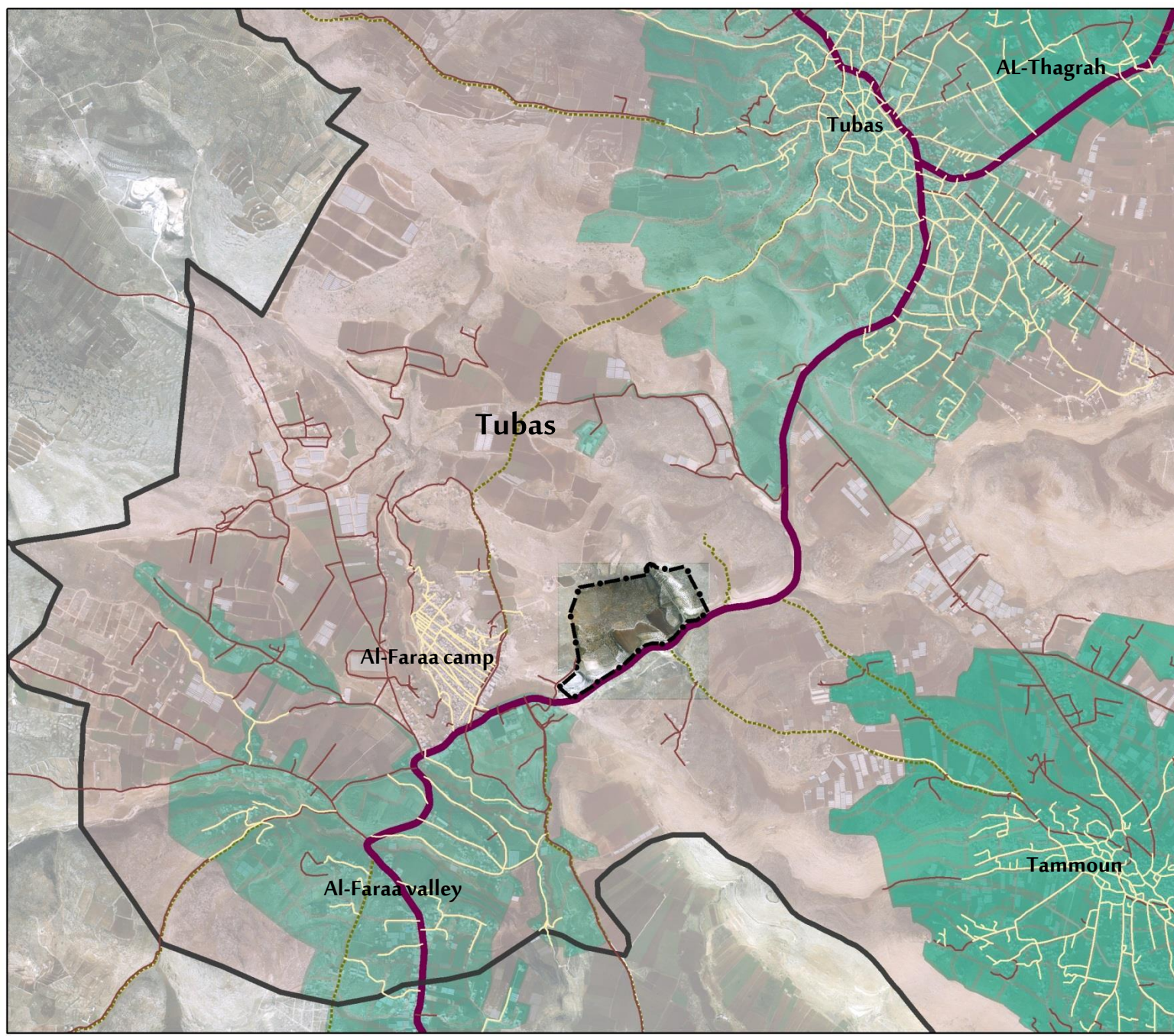
**REGIONAL MAP
FOR LAND 1**



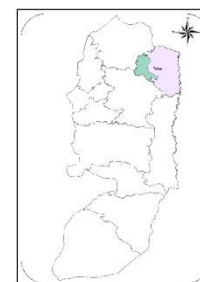
Legend

- Main
- Regional
- Local
- internal
- Land 1
- Governorate WestBank








1:150,000

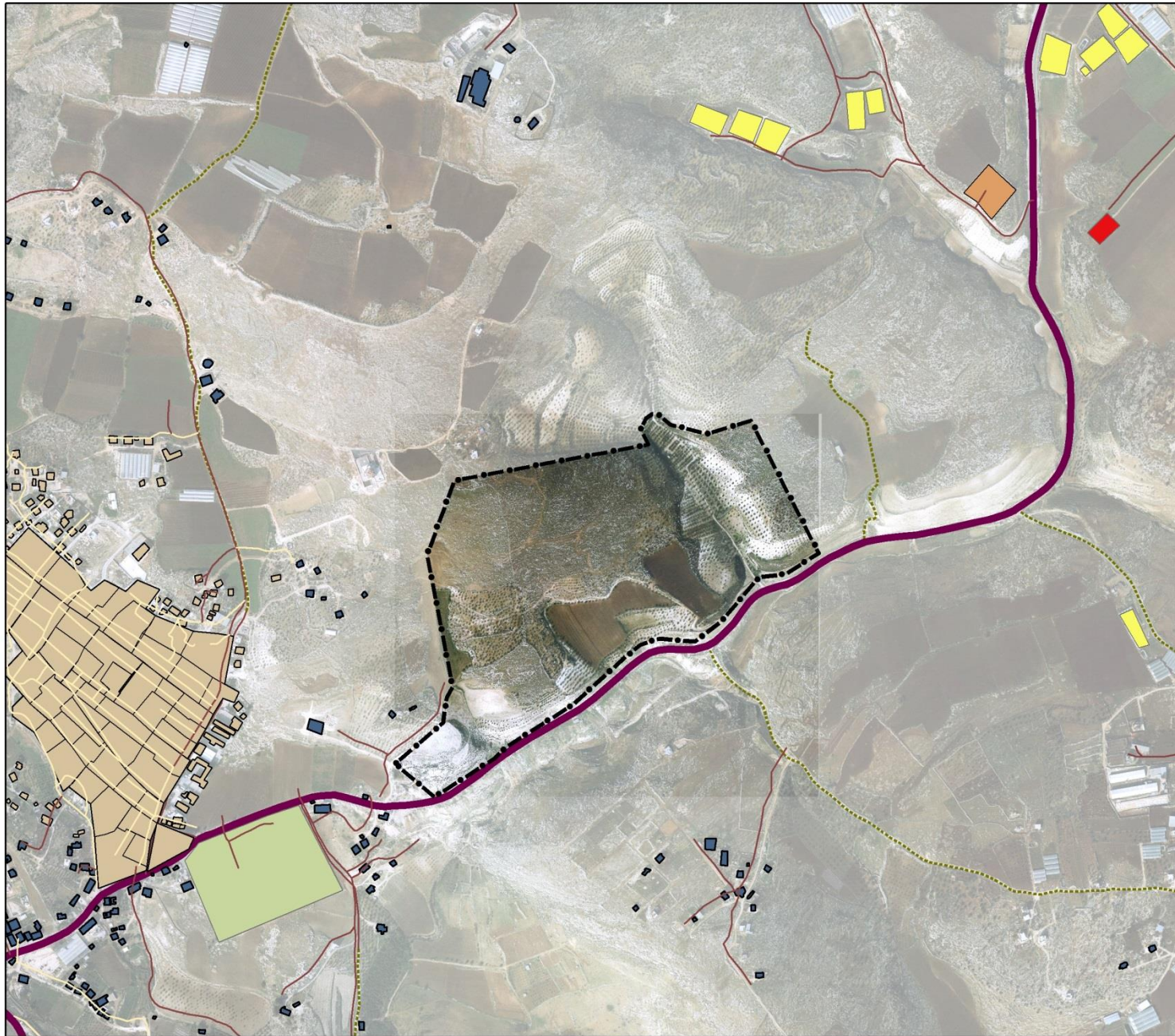


**LOCAL MAP FOR
LAND 1**



Legend


-  internal
-  Dirt
-  Local
-  Main
-  Regional
-  Land 1
-  Tubas communities



BUILDING USE MAP FOR LAND 1



Legend

-  Play ground
-  company
-  Green houses
-  Vegetable shop
-  Al-Faraa Camp
-  Residential building
-  Land 1



AGRICULTURE CLASSIFICATION

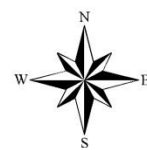
MAP FOR LAND 1



Legend

- Local
- Dirt
- Regional
- Land 1
- High Agricultural Value
- Middle Agricultural Value
- Low Agricultural Value

1:6,000



ROAD MAP FOR

LAND 1

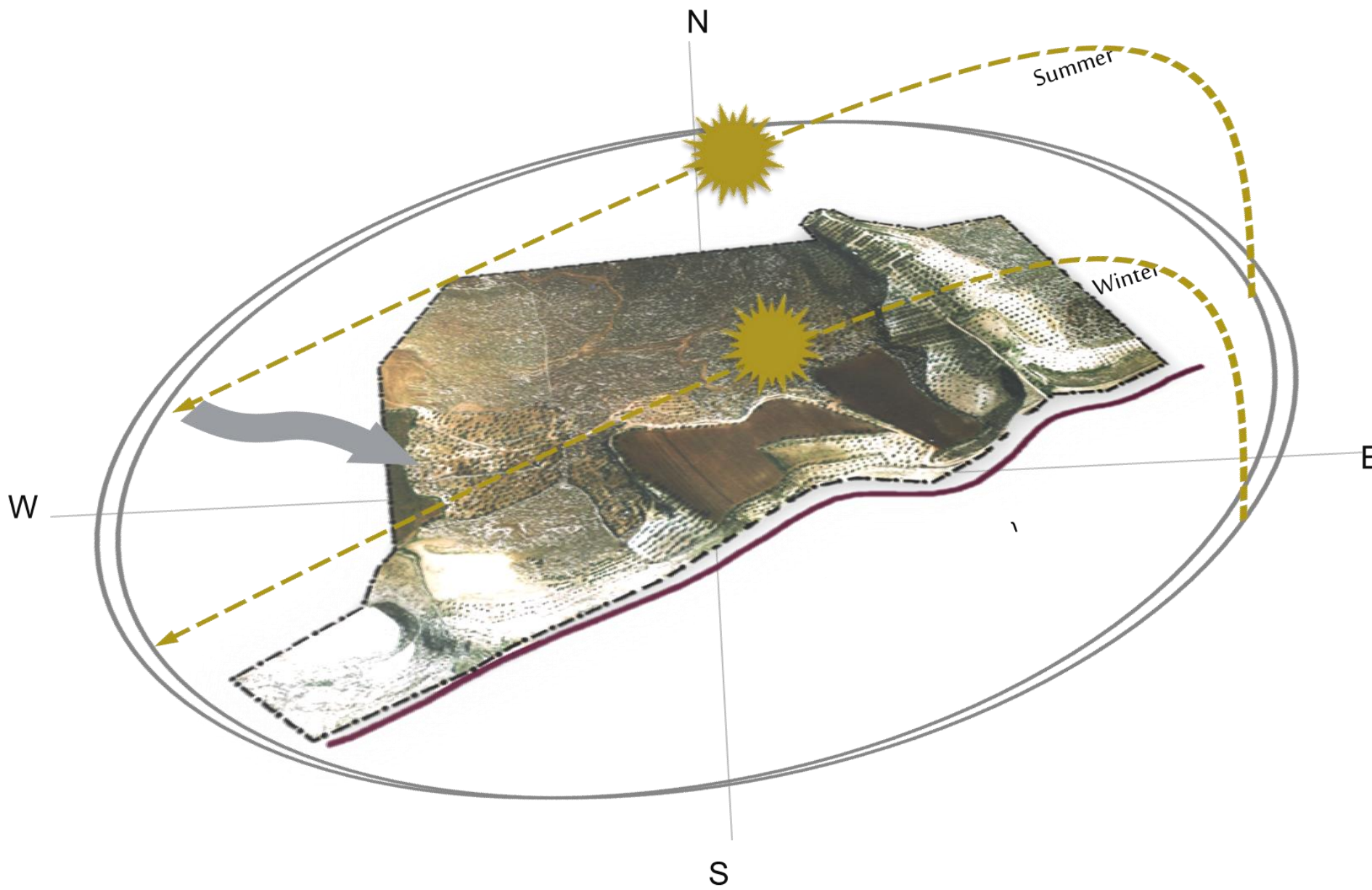


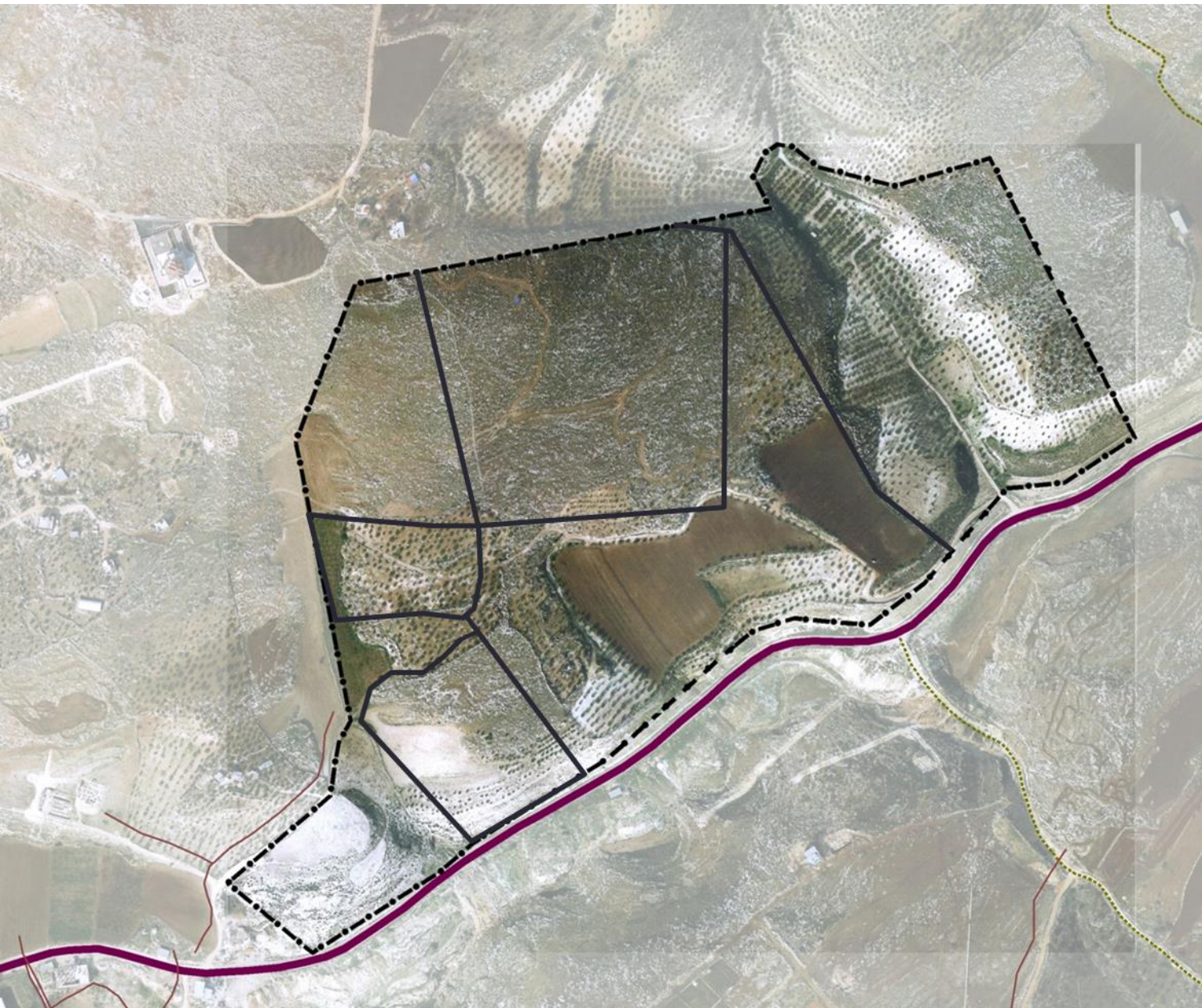
Legend

- internal
- Dirt
- Local
- Main
- Regional
- Tubas communities

1:15,000







THE NUMBER OF PARCELS

IN LAND 1



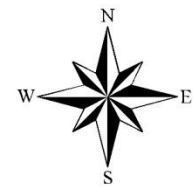
Legend



Parcels



Land 1



VISUAL ASPECT FOR LAND 1



Legend

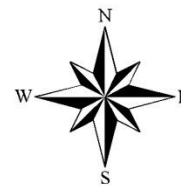


Land 1

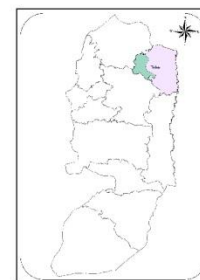


Best view



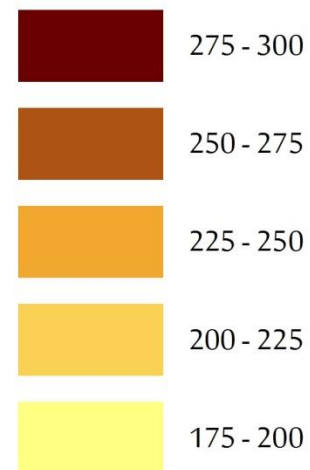


TOPOGRAPHIC MAP FOR LAND 1

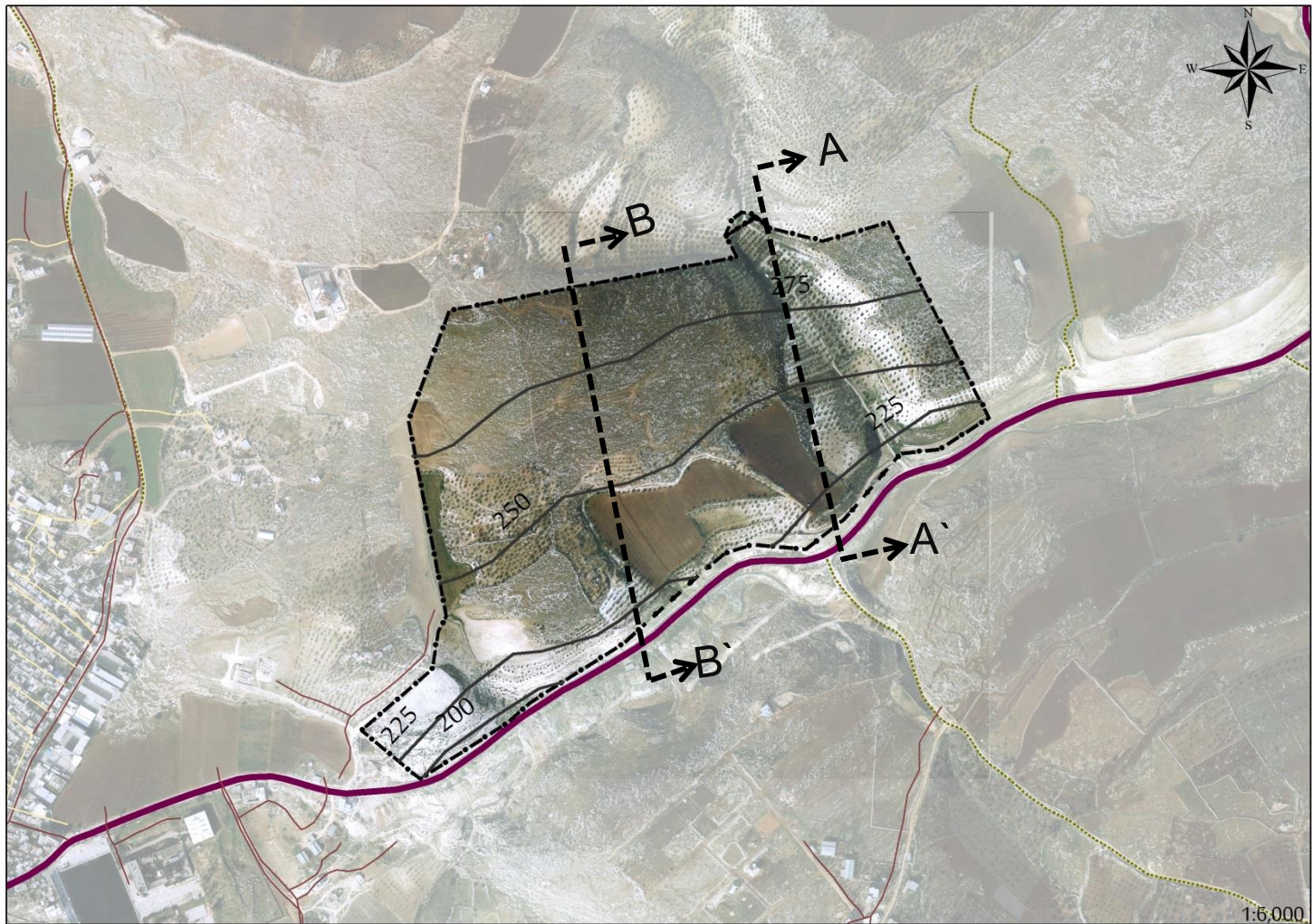


Legend

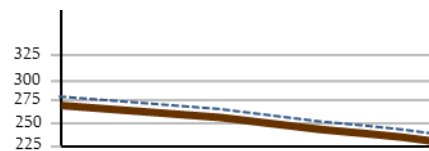
Elevation



1:6,000

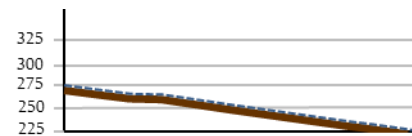


Section B-B'

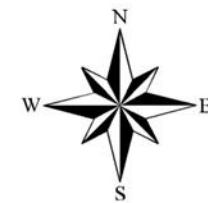
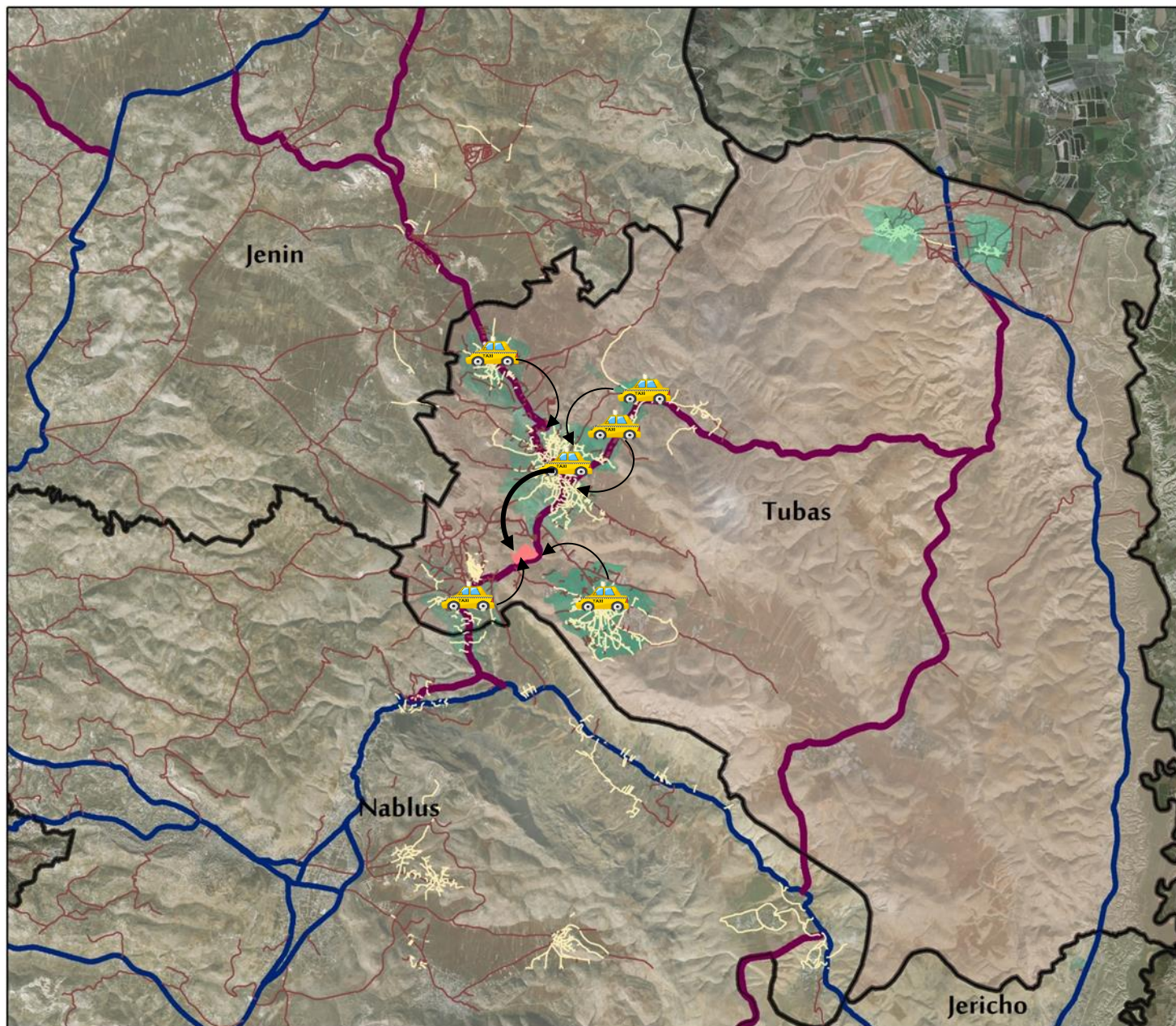


SLOPE : 6.6%

Section A-A'



SLOPE : 5.5%



ACCESSIBILITY AND MOBILITY



Legend



Public transportation

— Main

— Regional

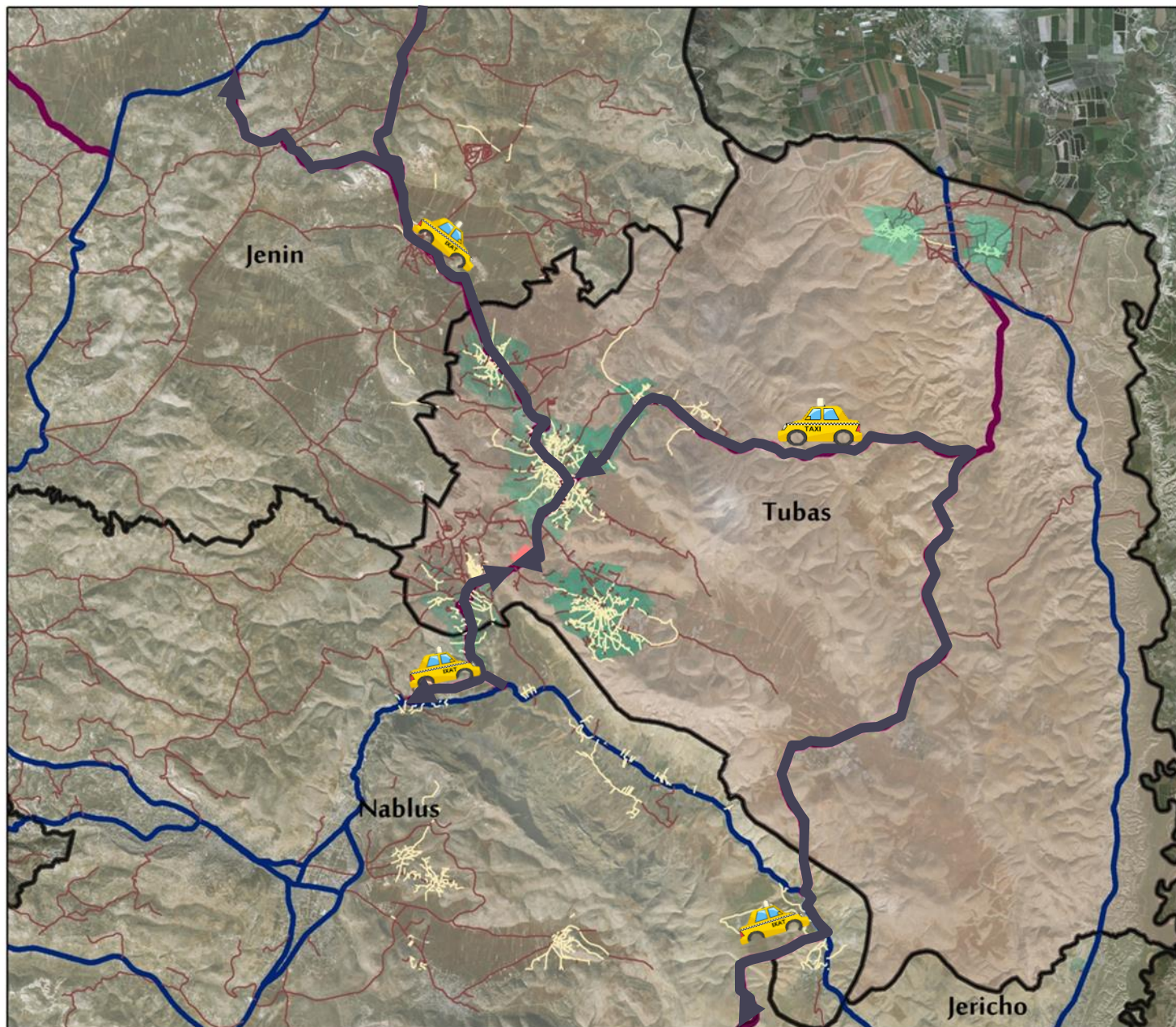
— Local

— internal

Land 1

Governorate WestBank








1:150,000



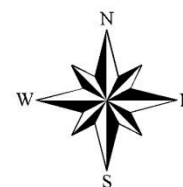
ACCESSIBILITY AND MOBILITY FOR LAND 1



Legend

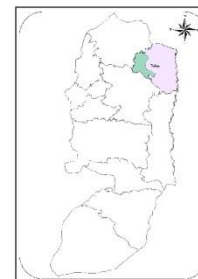
-  Local
-  Main
-  Regional
-  Local
-  internal
-  Land 1
-  Governorate WestBank

1:150,000



NOISE POLLUTION MAP

FOR LAND 1



Legend

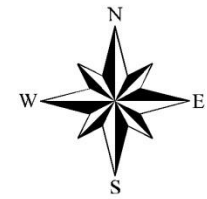
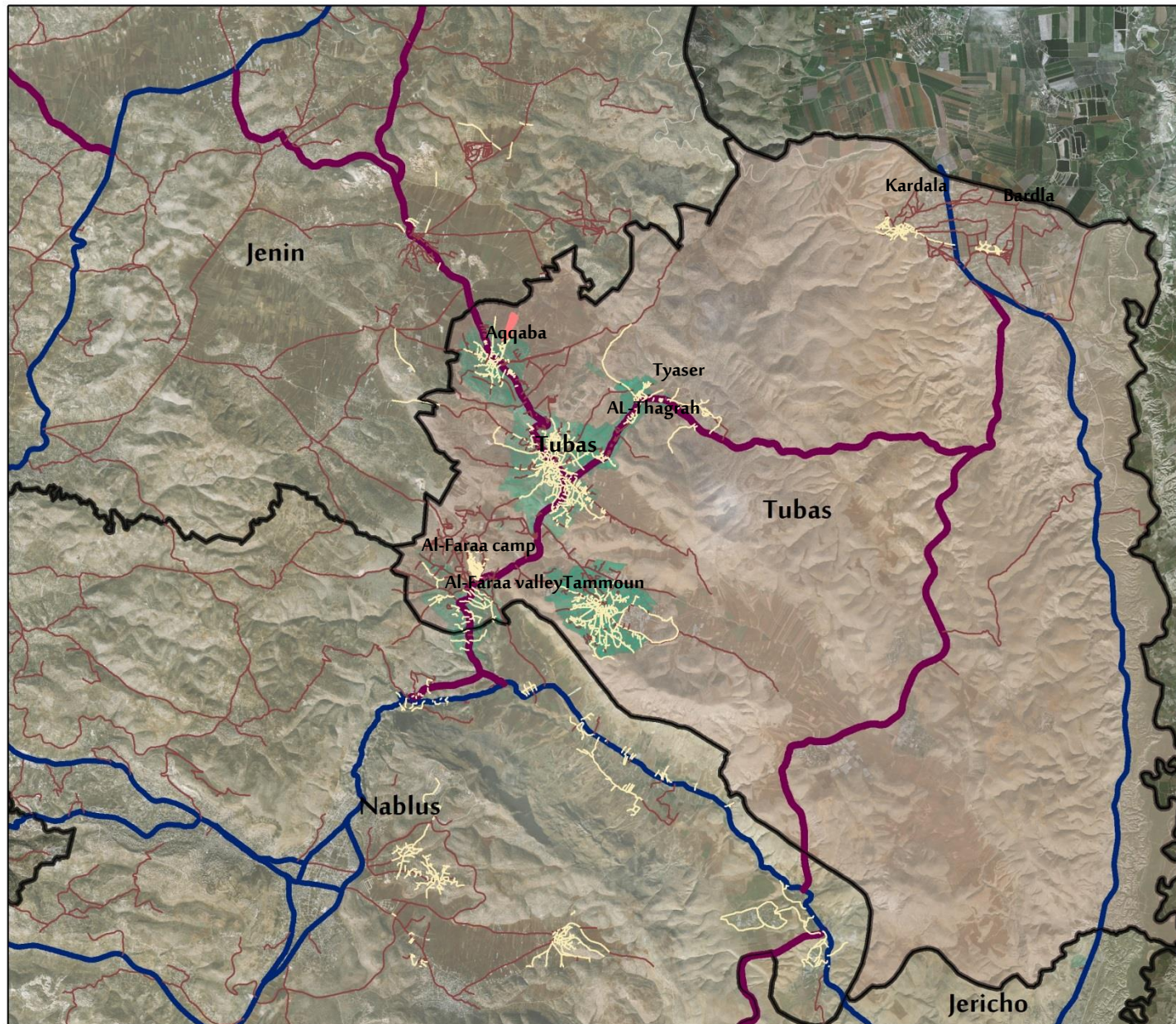


Land 1

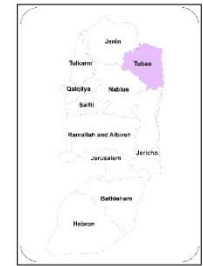


Noise & air pollution
buffer

Site 2 analysis :



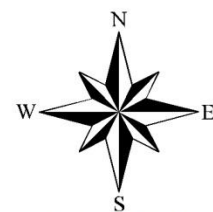
REGIONAL MAP
FOR LAND 2



Legend

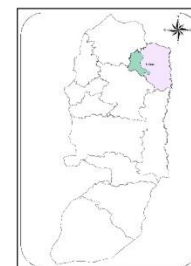
- Local
- internal
- Local
- Main
- Regional
- Land 2
- Governorate WestBank

1:150,000



LOCAL MAP FOR

LAND 2



Legend

internal

Dirt

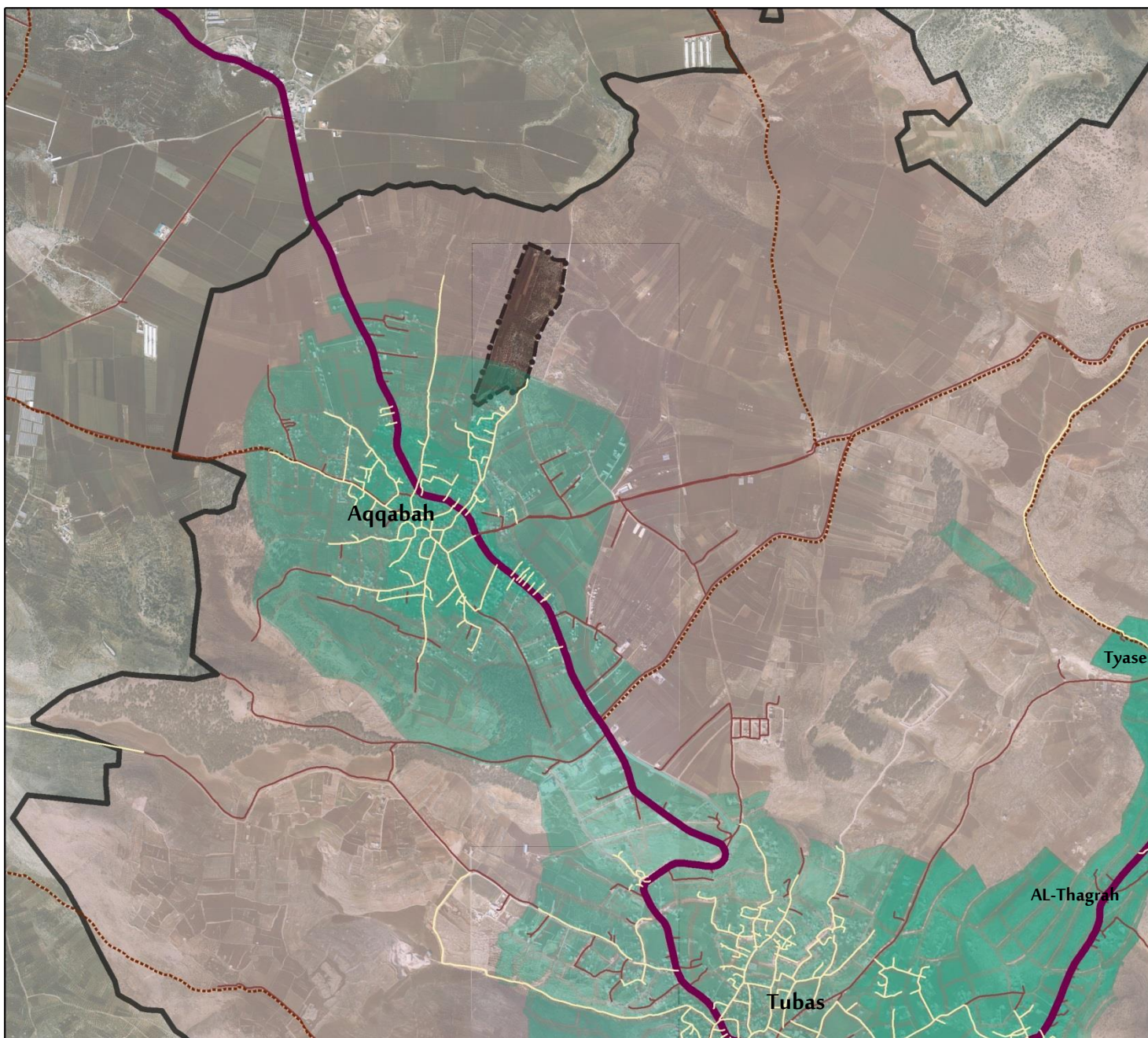
Local

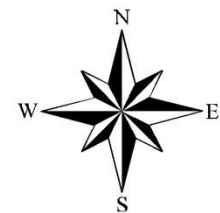
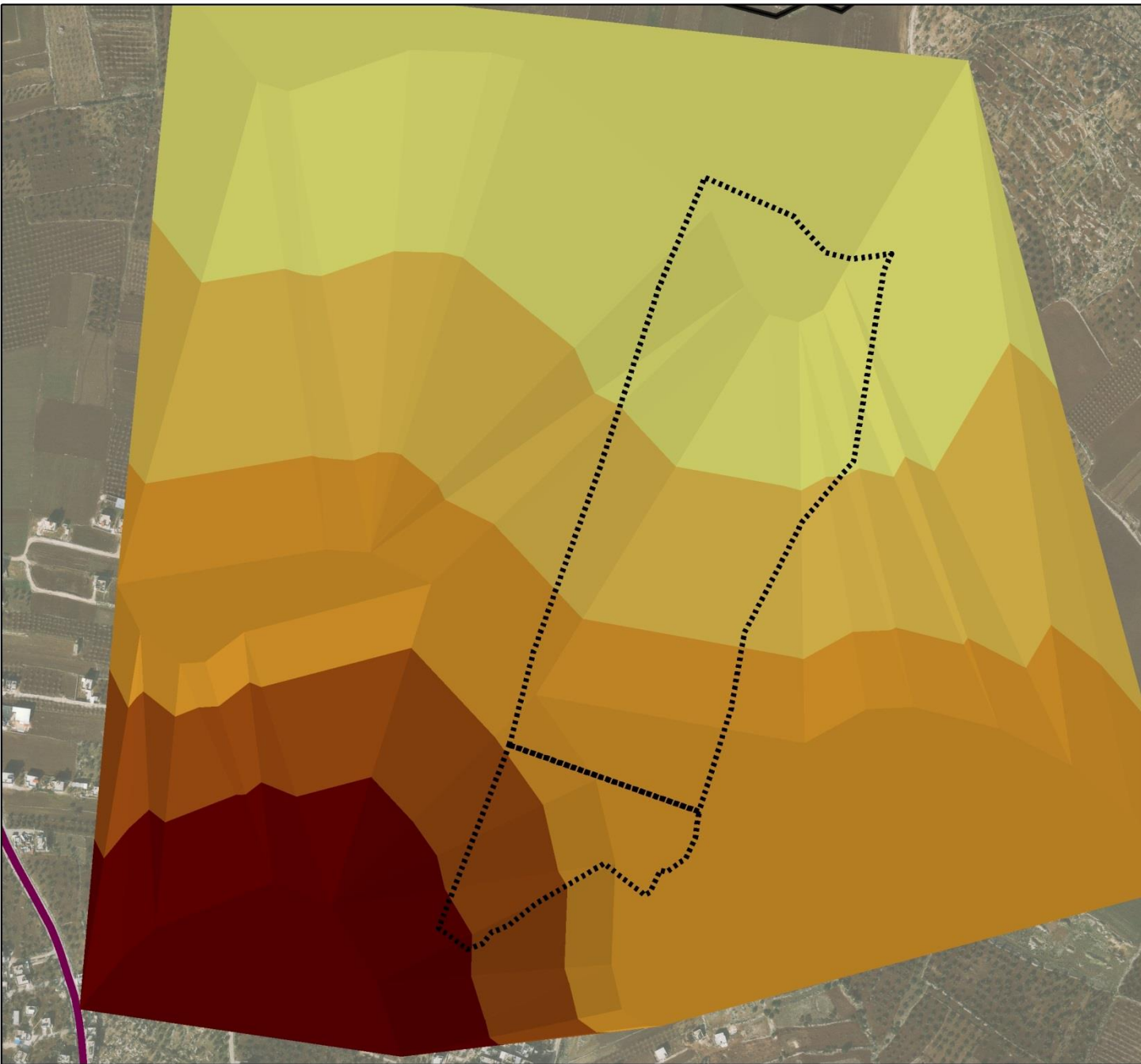
Main

Regional

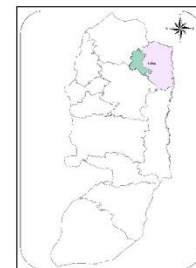
Tubas communities

1:28,000





NOISE POLLUTION

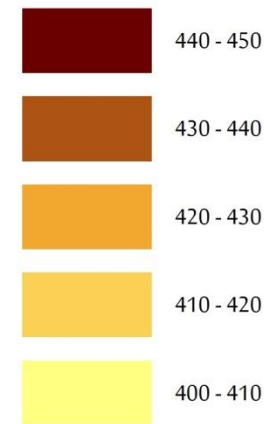


Legend

— Regional

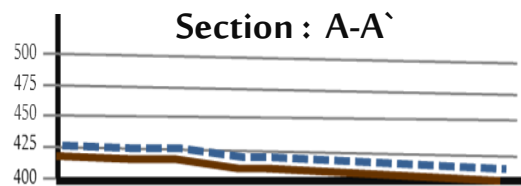
--- Land 2

Elevation

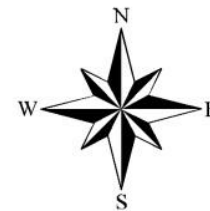


1:6,000

SLOPE



Slope : 2.5%



AGRICULTURE MAP FOR LAND 2

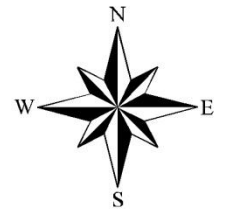
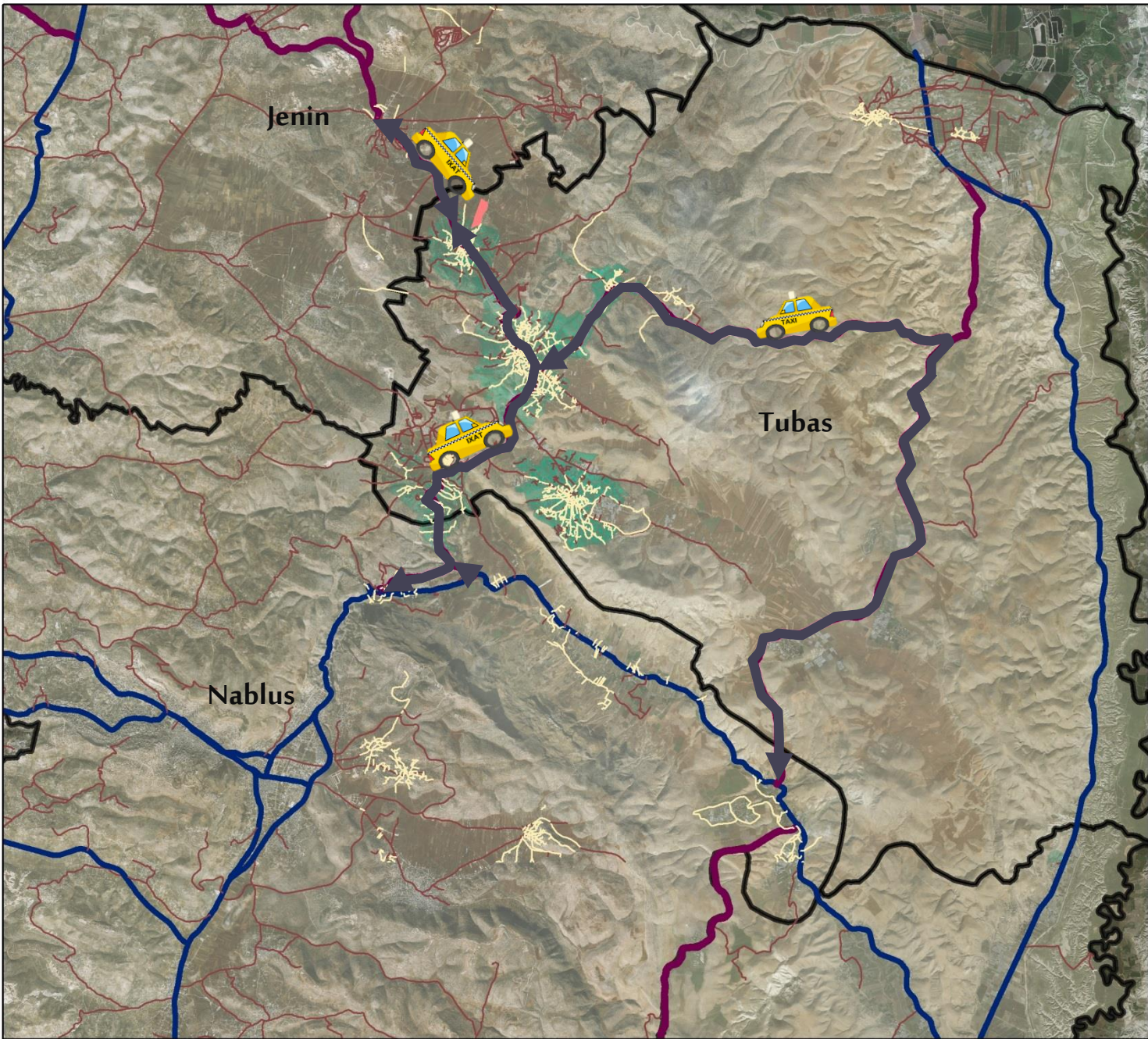


Legend

— internal

Land 2

High Agricultural Value



ACCESSIBILITY AND MOBILITY FOR LAND 2



Legend



Public transportation



internal



Local



Main



Regional



Land 2



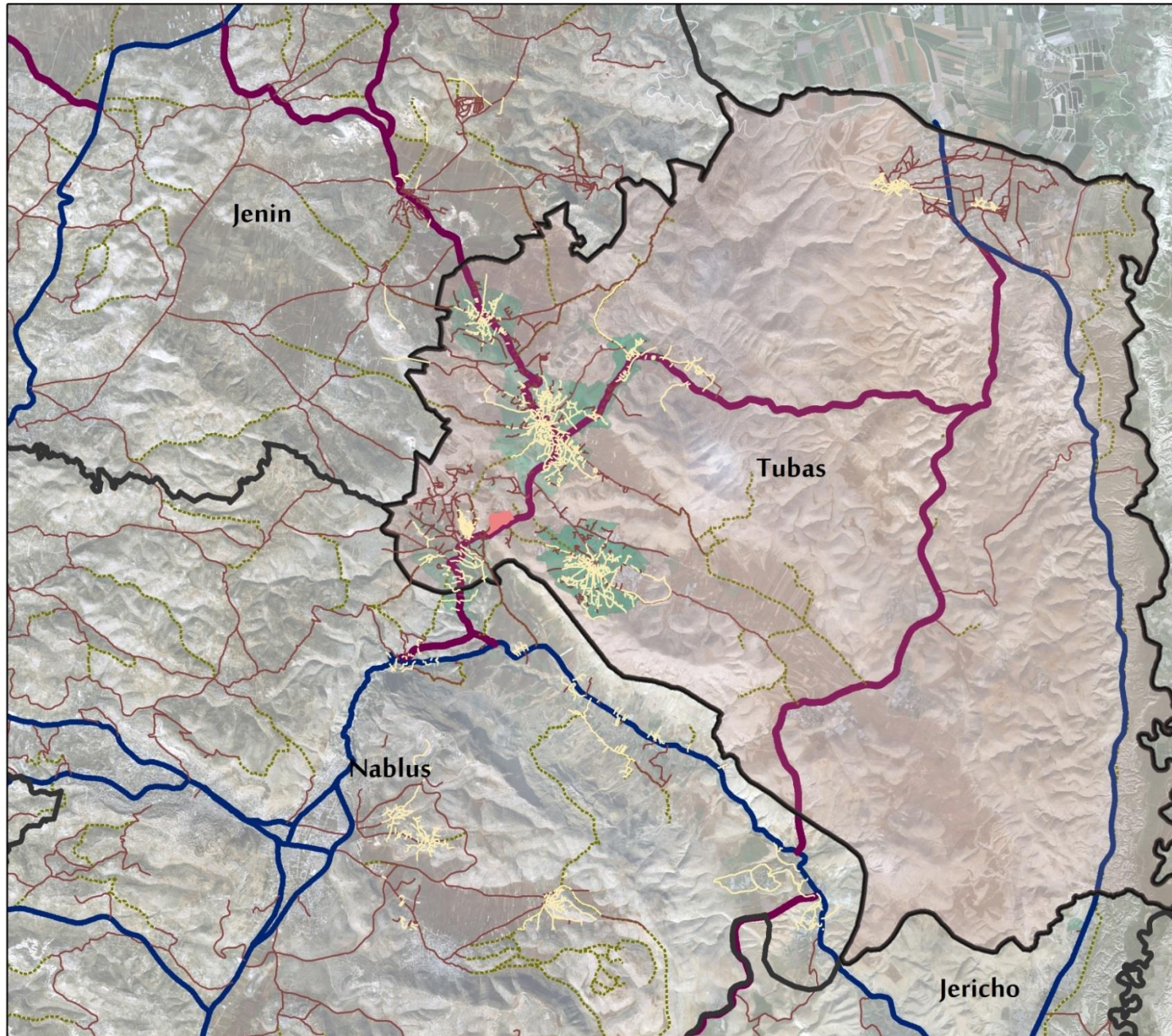
Governorate WestBank

1:150,000

Site analysis evaluation :

Sites criteria	Wight	Site 1	Site 2
Far from high agricultural value land	3	2	1
Topography and drainage	3	3	1
High security and safety	2	2	3
Size	2	3	1
Availability of utilities and infrastructure	3	2	2
State land ownership	1	1	1
High accessibility and mobility	3	3	2
Away from pollution	1	2	3
Land geology	2	1	1
Total		45	32

The chosen site :



REGIONAL MAP FOR LAND 1



Legend

- internal
- Dirt
- Local
- Main
- Regional
- land 3
- Tubas communities
- Governorate WestBank

1:150,000

Concept :



Strength / Opportunity

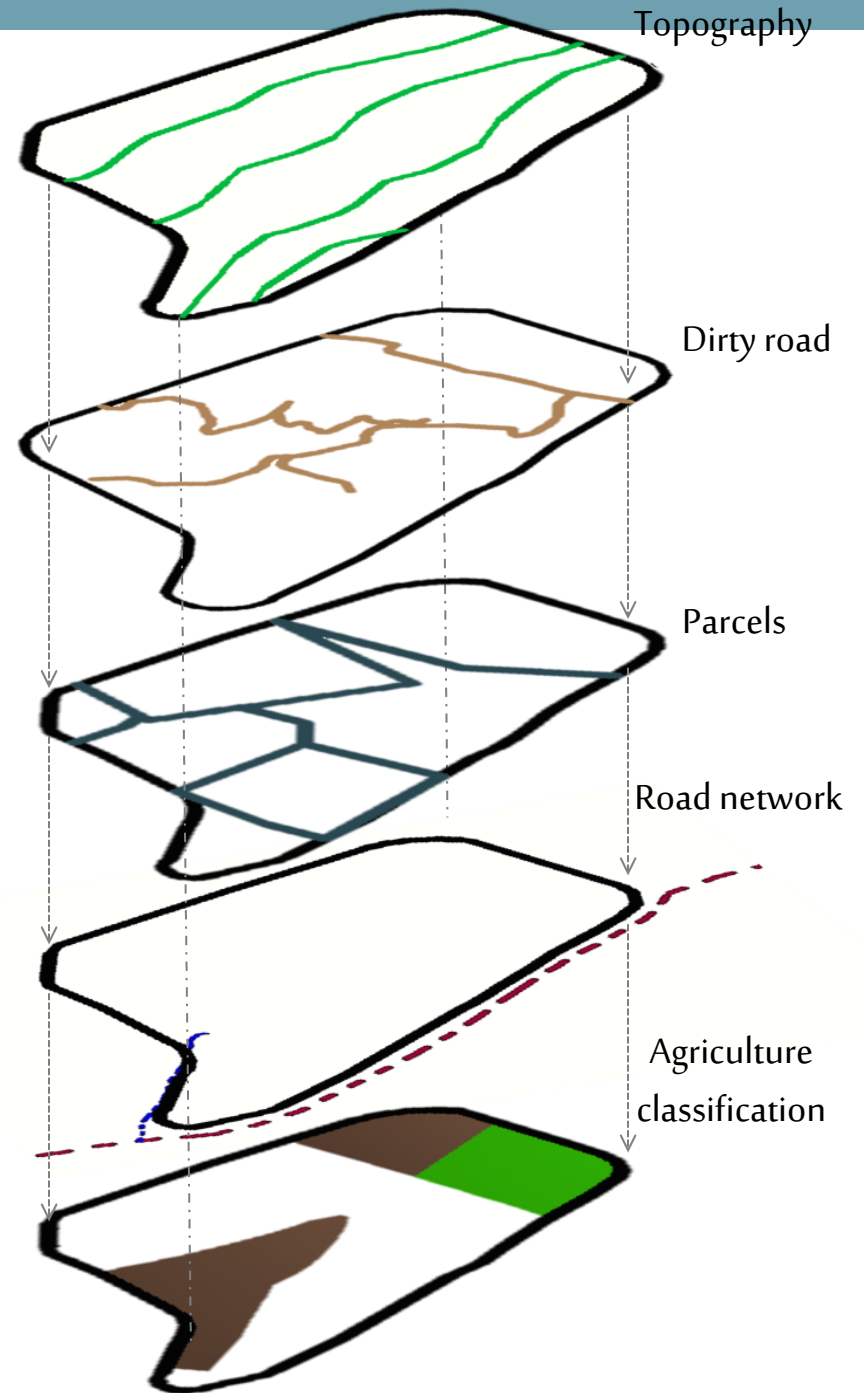
1. Open spaces for future expansion.
2. Availability of paved & dirty streets .
3. Vegetables company for trainer in agriculture college .
4. Good view .
5. Good drainage system .
6. Availability of play ground .
7. Near Al-Faraa camp.
8. Its surrounding by three agriculture communities .
9. Its near police station .
10. There is water & electricity network.



Concept :

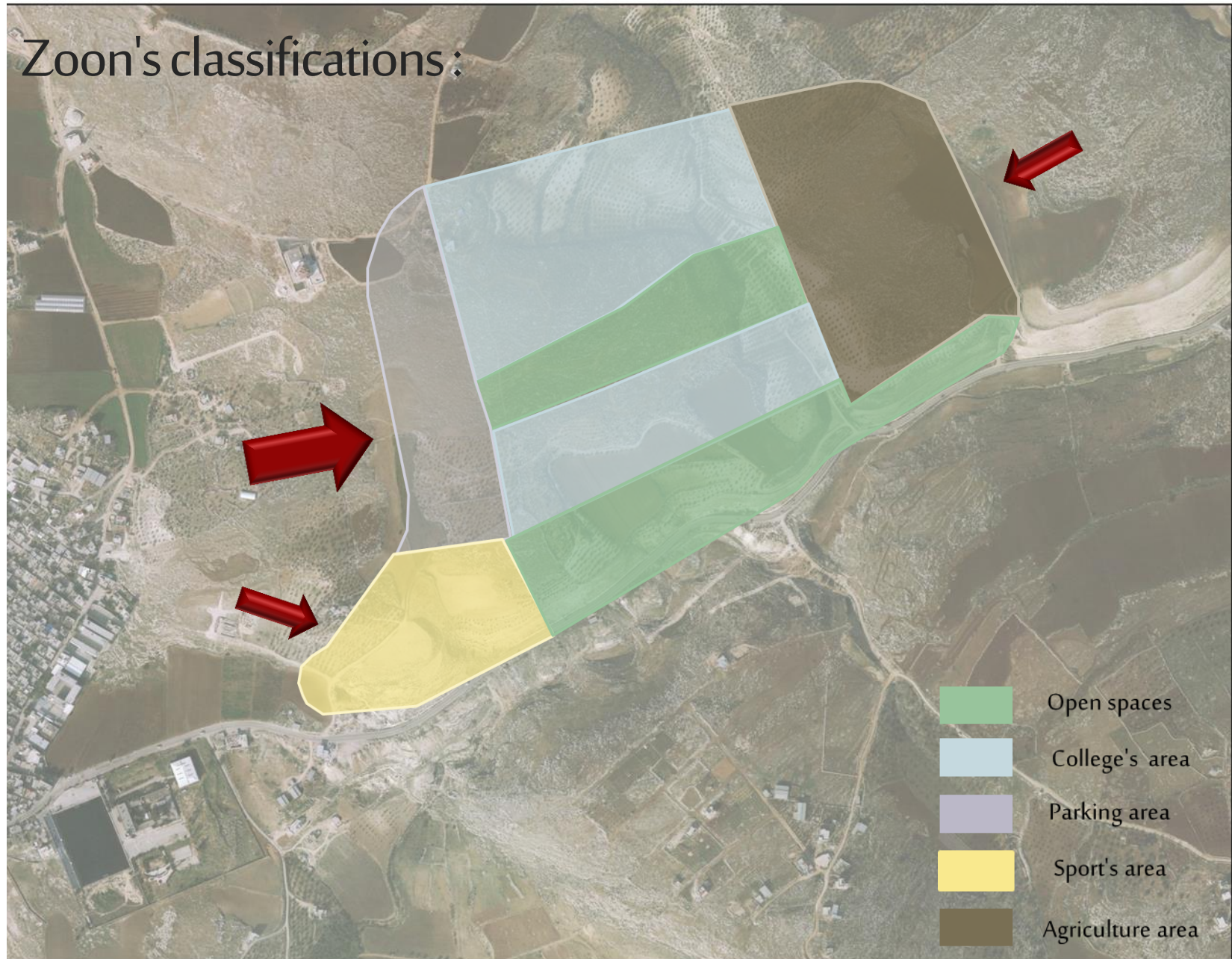


Concept :



Concept :

Zoon's classifications:



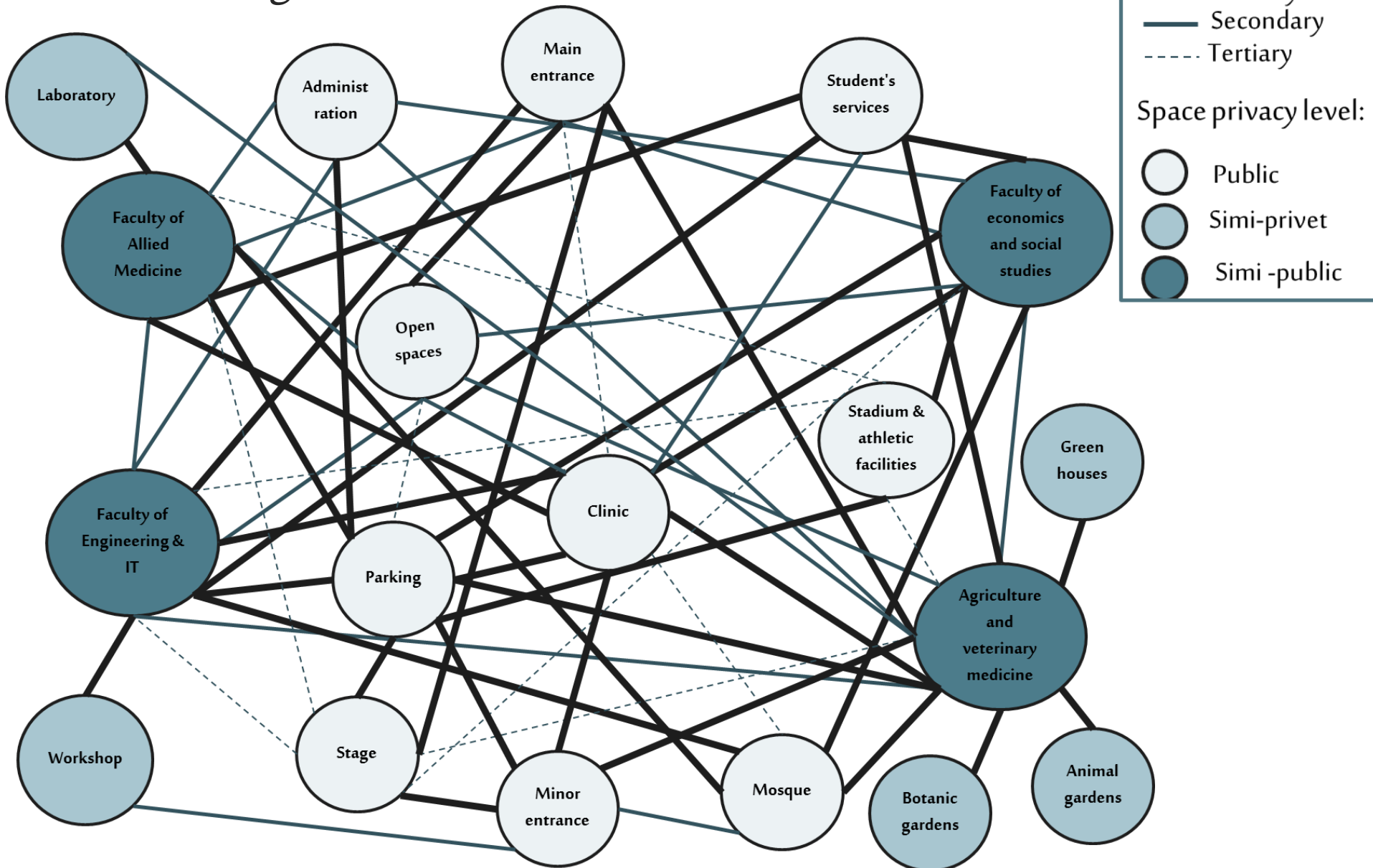
Concept :

Main roads network:



Concept :

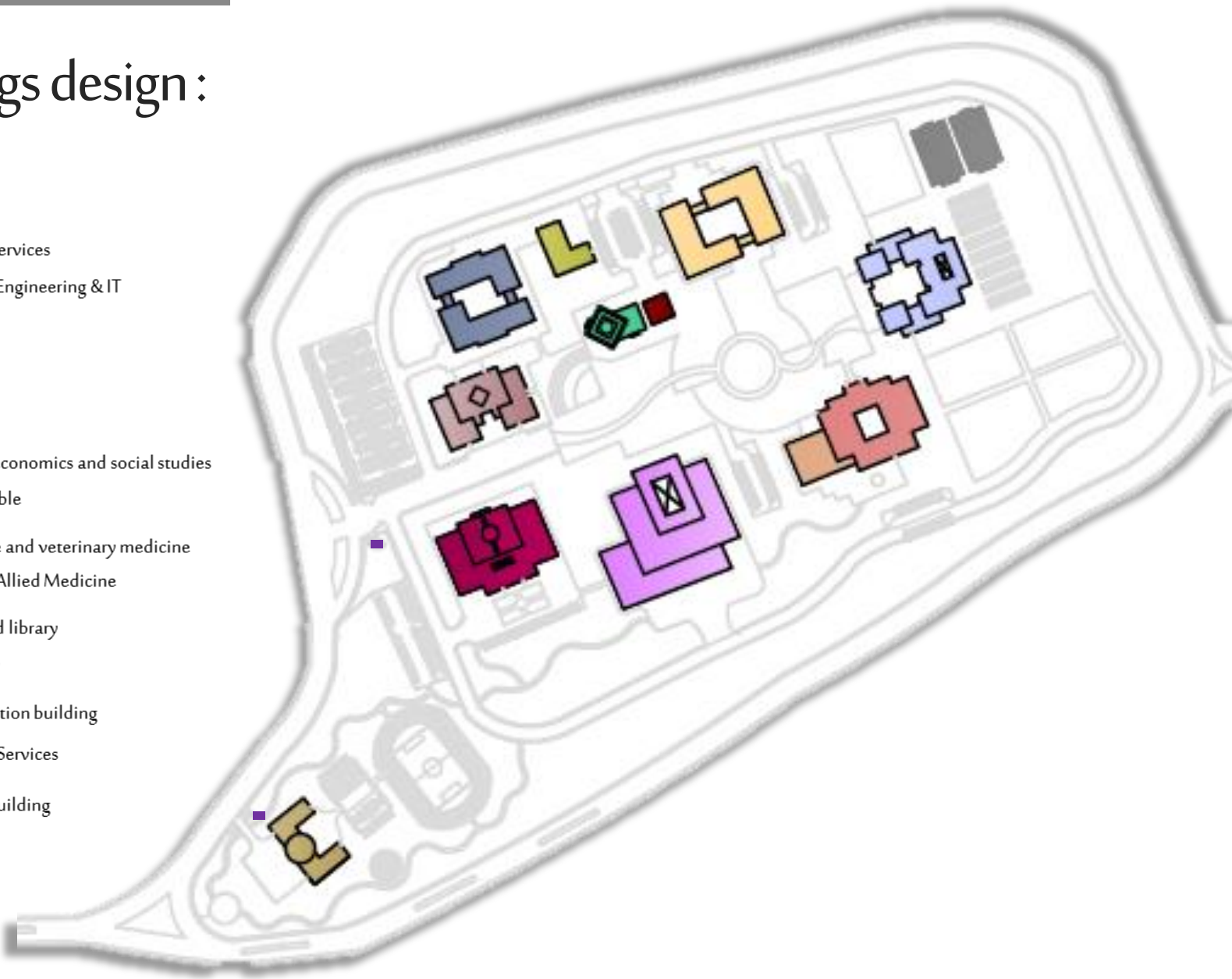
Bubble diagram :



Design :

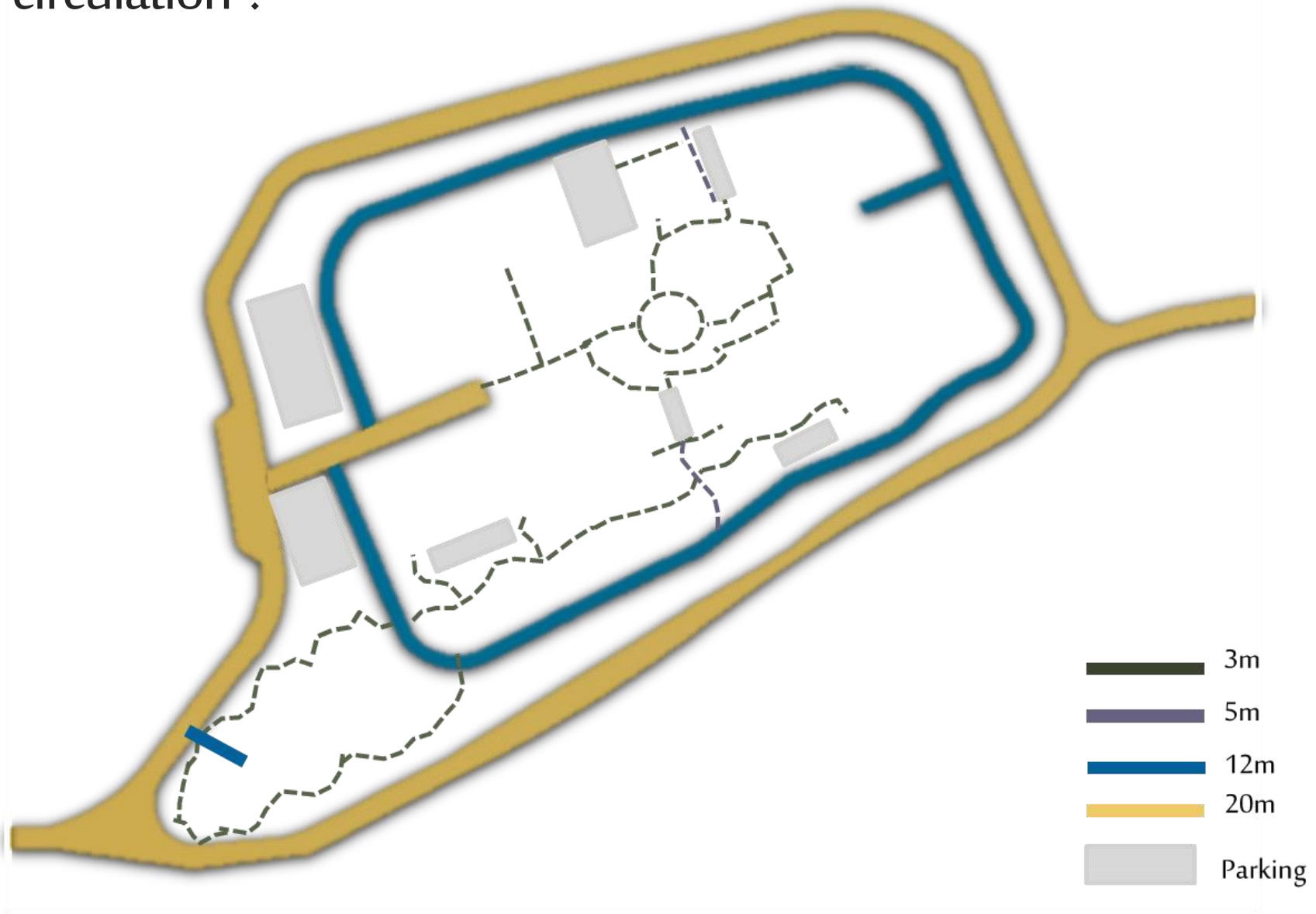
Buildings design :

- Student's services
- Faculty of Engineering & IT
- Workshop
- Mosque
- Clinic
- Faculty of economics and social studies
- Animal stable
- Agriculture and veterinary medicine
- Faculty of Allied Medicine
- Theatre and library
- Laboratory
- Administration building
- Sports Hall Services
- Security building

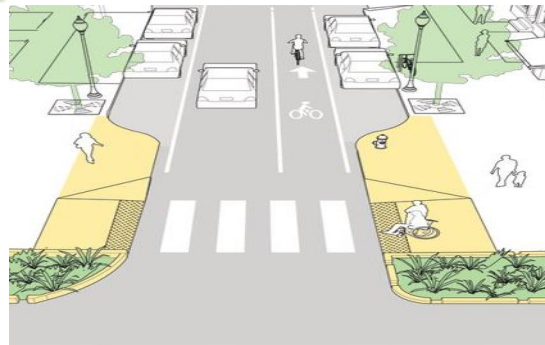


Concept :

circulation :



Design :

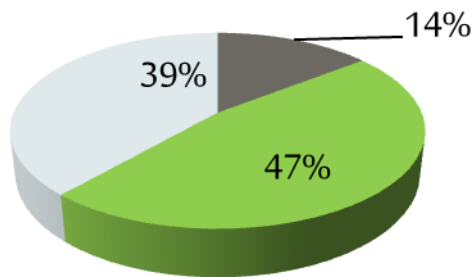




Design :

- Total cost : Not less than 10,000,000 dollar
- For 200,000 student
- The campus has two wells to collect rainfall water .
- There will be a compost farm factory .

■ built up area ■ soft scape ■ hardscape



No .	Buildings	Area (m2)
1	Administration building	5298
2	Faculty of Engineering & IT	5298
3	Mosque	1100
4	Clinic	460
5	Workshop	1240
6	Faculty of economics and social studies	5849
7	Animal stable	3500
8	Agriculture and veterinary medicine	4895
9	Faculty of Allied Medicine	5000
10	Laboratory	1540
11	Theatre and art gallery	10,582
12	Student's services	3879
13	Sports Hall Services and stadiums	7250
14	Security buildings	200
Total built up area		56091

A tropical landscape with several tall palm trees and a winding path. The scene is bright and sunny, with a clear blue sky and some light clouds. The path is made of light-colored stones and curves through a green lawn. There are some small bushes and flowers in the background.

Thank you for listening !

Any questions ?