

Medical Drugs Container

Hardware Project

Outlines

- Introduction
- Motivation
- Components
- Methodology
- Future work
- Demo

Introduction

- MDC is a device used in to help nurses.
- A device with more safety and tracking.
- More helpful for nurses as its moving to the patient's place.

Motivation

- Save the nurses time and efforts to remember each patient's drug timing and quantity.
- Coordinate between nurses, with time shifting between them.
- Grantee that the drugs wont be reached by people who are not in charge.

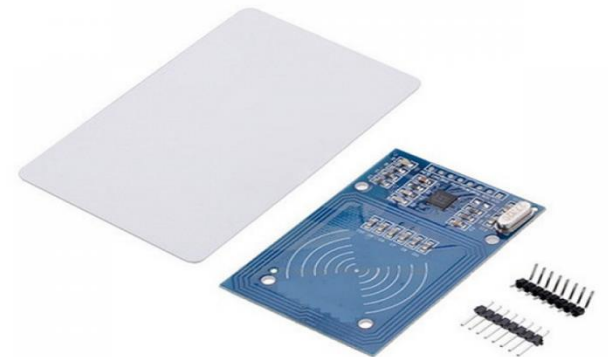
Components

- Servo motor
- Keypad 3*4
- LCD



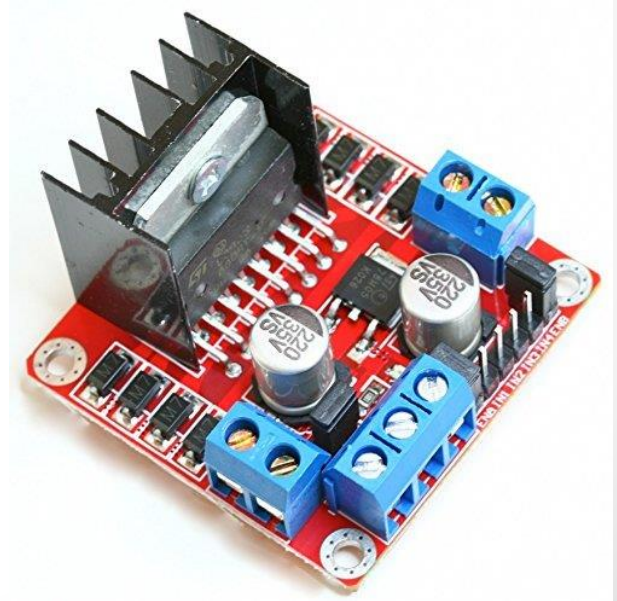
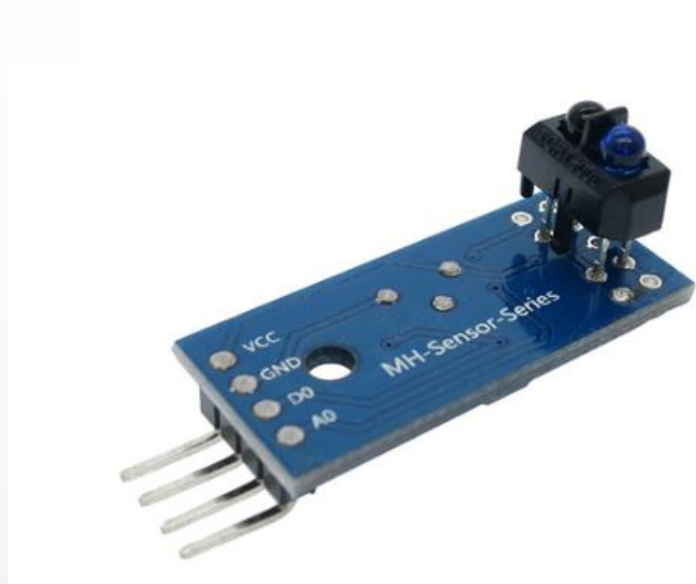
Components

- Voice recorder
(ISD 1820)
- Card Reader (RFID)
- RTC (Real Time
Clock)



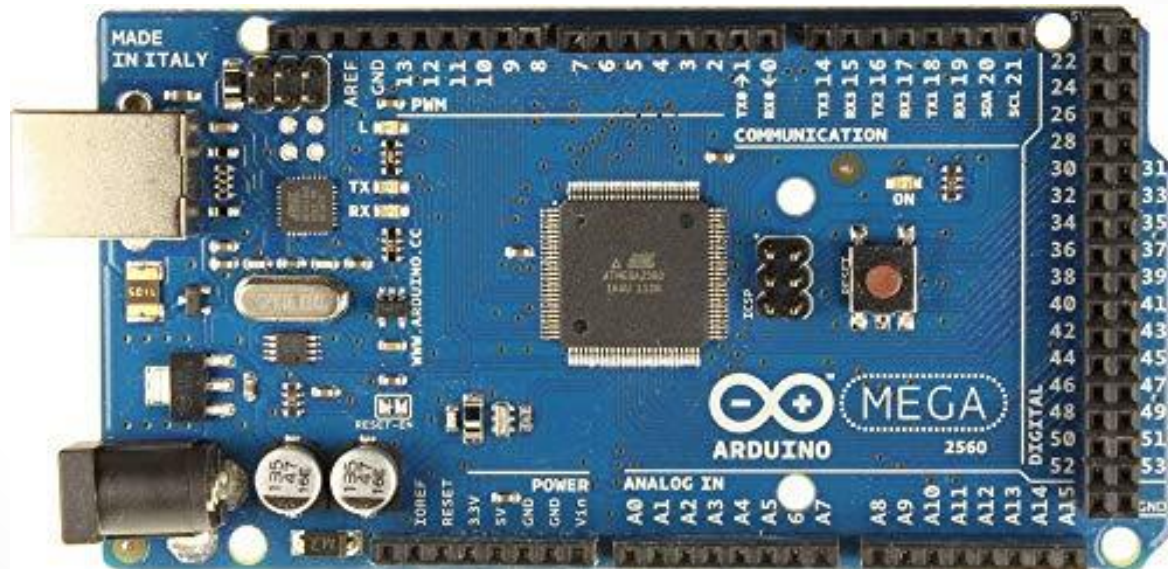
Components

- IR Sensors
- L 290N (H-bridge) Driver



Components

- 2 * Arduino Mega



Methodology

- Use the drawers as a keeper, no one can access what inside without the UID card .
- Ability to set for each dose its time and destination and drawer number.
- Move the car in a line so the container deliver the drug to its destination.

Putting The Drugs

- The user put the drug and set the requirements.
- Timer is off, the car will move to the destination set by the user.
- When the car reached its destination.
- Open the lock by the card.

Drugs Delivery

- Line follower mechanism Using IR Sensors .
- Destination depending on the position entered.

Future work

- Add feedback system.
- Use a mobile application.
- Flexibility in car movement.

DEMO

Thank You