



INNOVATION SPACES

المساحات الاقتصادية الأبداعية

PROJECT OVERVIEW

WE ARE LIVING NOWADAYS IN THE WORLD OF THE INFORMATION REVOLUTION. SCIENCES BECAME THE BASIS OF SOCIETIES' LIFE AND THE CENTRAL POINT FOR THEIR GROWTH AND DEVELOPMENT.

SCIENCE IS NOT LIMITED TO ONLY ONE ASPECT, RATHER, IT EXTENDS TO ALL ASPECTS OF LIFE, PARTICULARLY IN ECONOMIC DEVELOPMENT, CONSEQUENTLY, AS A DEVELOPING COUNTRY WE HAVE TO DO OUR ROLE TO ACHIEVE DEVELOPMENT BY INVESTING OUR MINDS TO GROW IN OUR SOCIETY.

FROM THIS PERSPECTIVE, THE IDEA OF (INNOVATION SPACES) BEGAN. THESE SPACES ARE AN AMALGAMATION OF THE CONCEPTS OF INNOVATION, INCUBATION, AND VENTURING.

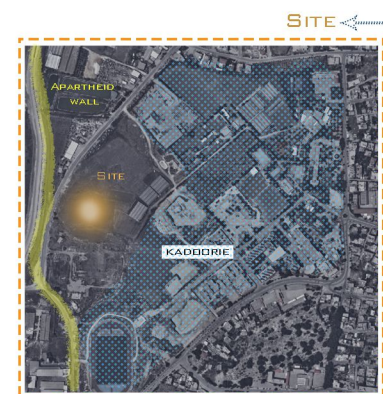
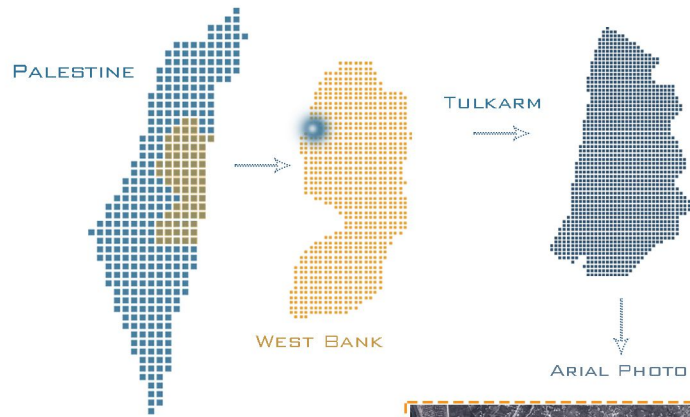
WHICH DESIGNED TO PROMOTE AND DEVELOP A SPACE TO EMBRACE ENTREPRENEURS, RESEARCHERS AND STUDENTS AND PROVIDE THEM WITH A SUITABLE ENVIRONMENT FOR WORK AND INNOVATION.

THIS IDEA WILL BOOST ECONOMIC GROWTH THROUGH A KNOWLEDGE ECONOMY. IT IS WHOLEHEARTEDLY SUPPORTING THE NATIONAL INNOVATION STRATEGY WHILE REINFORCING OUR NATION'S CULTURE OF INNOVATION.

FROM HERE THE ROLE OF ARCHITECTURE CAME TO CREATE A SUITABLE ENVIRONMENT THAT STIMULATES RESEARCH AND PROMOTING INNOVATION, INCUBATION AND VENTURING OF STUDENTS' PROJECTS AND START-UPS.

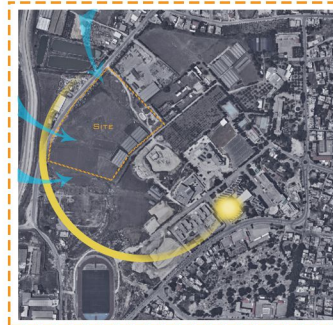
LOCATION

THE LOCATION IS ONE OF THE MOST IMPORTANT COMPONENTS FOR THE SUCCESS OF THE PROJECT. THEREFORE, IT IS SIGNIFICANT TO SPOT THE LIGHT ON THE YOUNGER GENERATION BY BUILDING THE PARK NEAR A TECHNICAL UNIVERSITY .



ACCORDINGLY, THE SITE WAS CHOSEN ON LAND ADJACENT TO THE PALESTINE TECHNICAL UNIVERSITY (KADDOORIE), SO THAT THIS PROJECT WOULD BE A LINK BETWEEN THE UNIVERSITY AND THE EXTERNAL SCIENTIFIC COMMUNITY.

ENVIRONMENT



SUN PATH
AIR

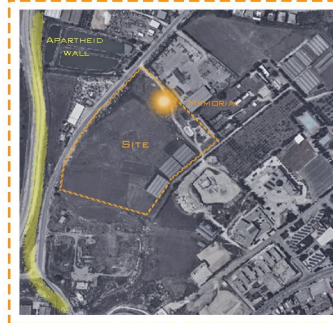
ACCESSIBILITY



MAIN STREET
SECONDARY STREET

HISTORY

THERE IS A MEMORIAL TO THE UNKNOWN SOLDIER ON THE GROUND.



TOPOGRAPHY

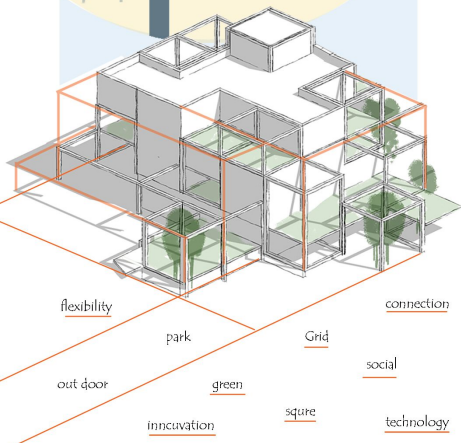


CONCEPT

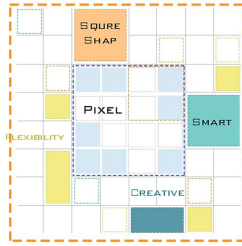
INNOVATION SPACES

THE TERM **INNOVATION SPACES** IS A REFLECTION OF A WIDE RANGE OF ACTIVITIES.

THIS TERM HAS A SECRET IN ITS COMBINATION AS ARCHITECTURE DO, IT COMBINED THE CONCEPTS OF INNOVATION, INCUBATION, AND VENTURING AS THE **TECHNOLOGY PARK** DO.

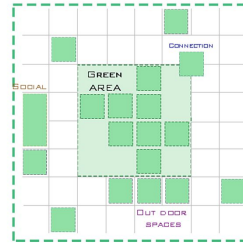


TECHNOLOGY + **PARK** = **INNOVATION SPACES**

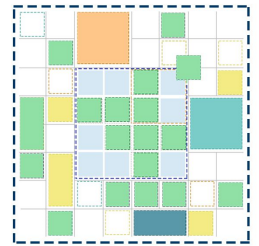


THE BASIS OF TECHNOLOGY IS A SMALL UNIT CALLED (**PIXEL**)

- SQUARE SHAPE
- FLEXIBILITY
- CREATIVE
- SMART

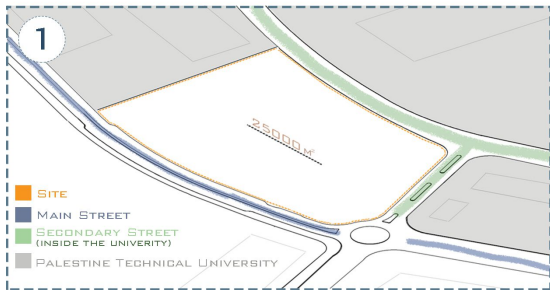


GREEN AREA
CONNECTION
OUT DOOR SPACES
SOCIAL

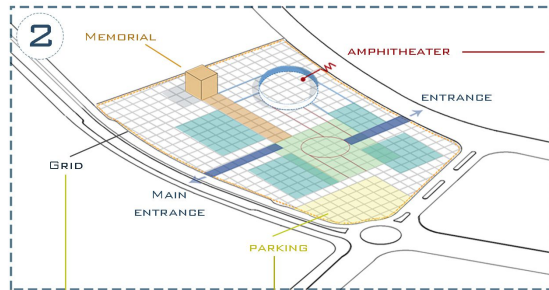


THE PROJECT IS A **SCIENTIFIC SOCIAL PLATFORM**

TO ACHIEVE THE CONCEPT OF **INNOVATION SPACES**, THE FORM WILL BE BASED A MODULAR (**SQUARE SHAP**) AS FOLLOWS



THE SITE AND IT'S AREA

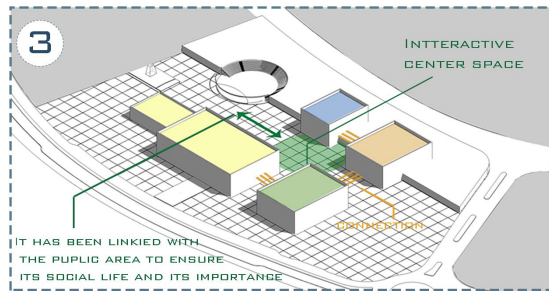
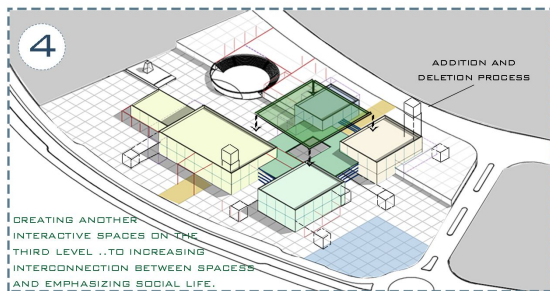


GRID PARALLEL TO THE STREET LINE

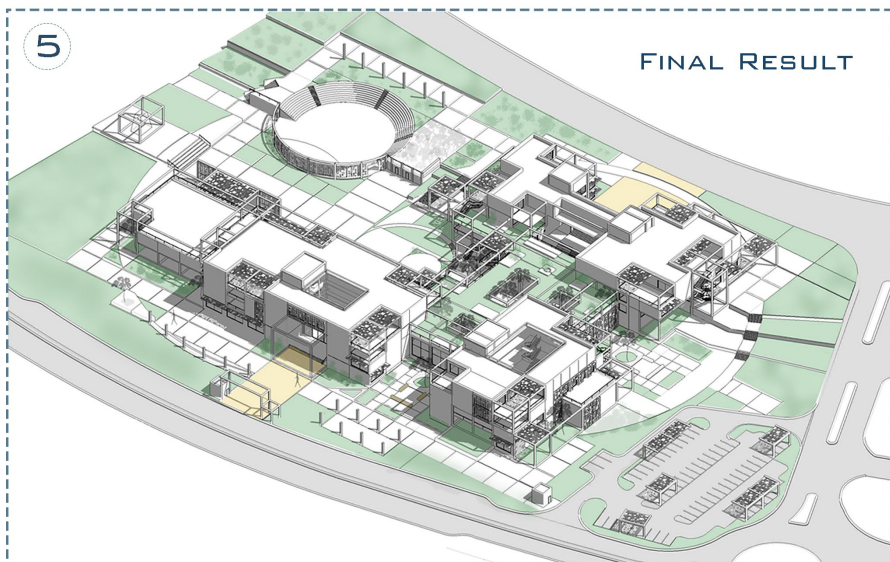
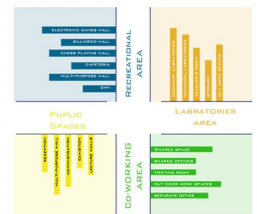
THIS AREA WAS CHOSEN TO BE TWO STREETS

THE PROJECT IS PROPOSED . ONE OF THEIR REQUESTS IS TO HAVE AN AMPHITHEATER. IT WAS PLACED IN THE NORTHEASTERN REGION ACCORDING TO THE APPLICABLE SPECIFICATIONS.

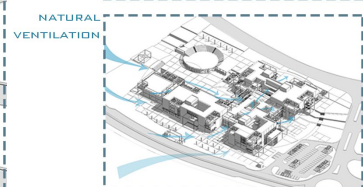
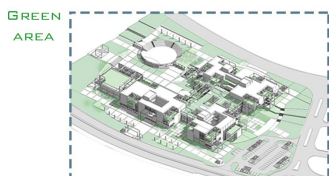
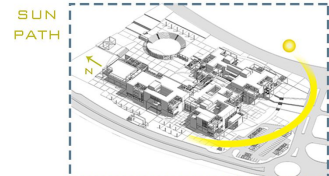
THE MEMORIAL AND REFLEXIVE ENTRANCE GREATS AFOUR SPACES...



WHILE STUDING THE PROJECT REQUIREMENTS, IT WAS FOUND THAT THERE ARE FOUR BASIC FUNCTIONS....

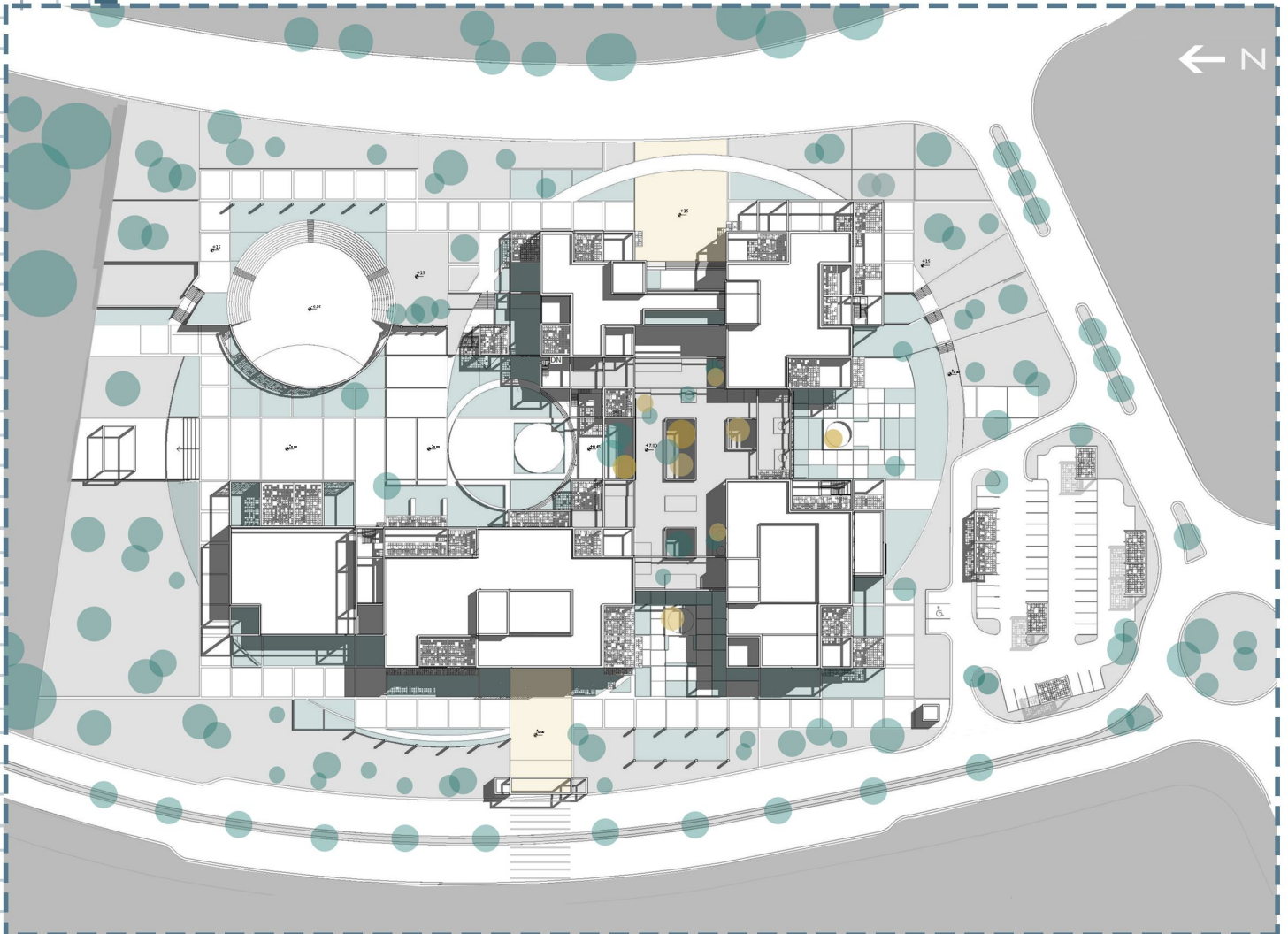


FINAL RESULT

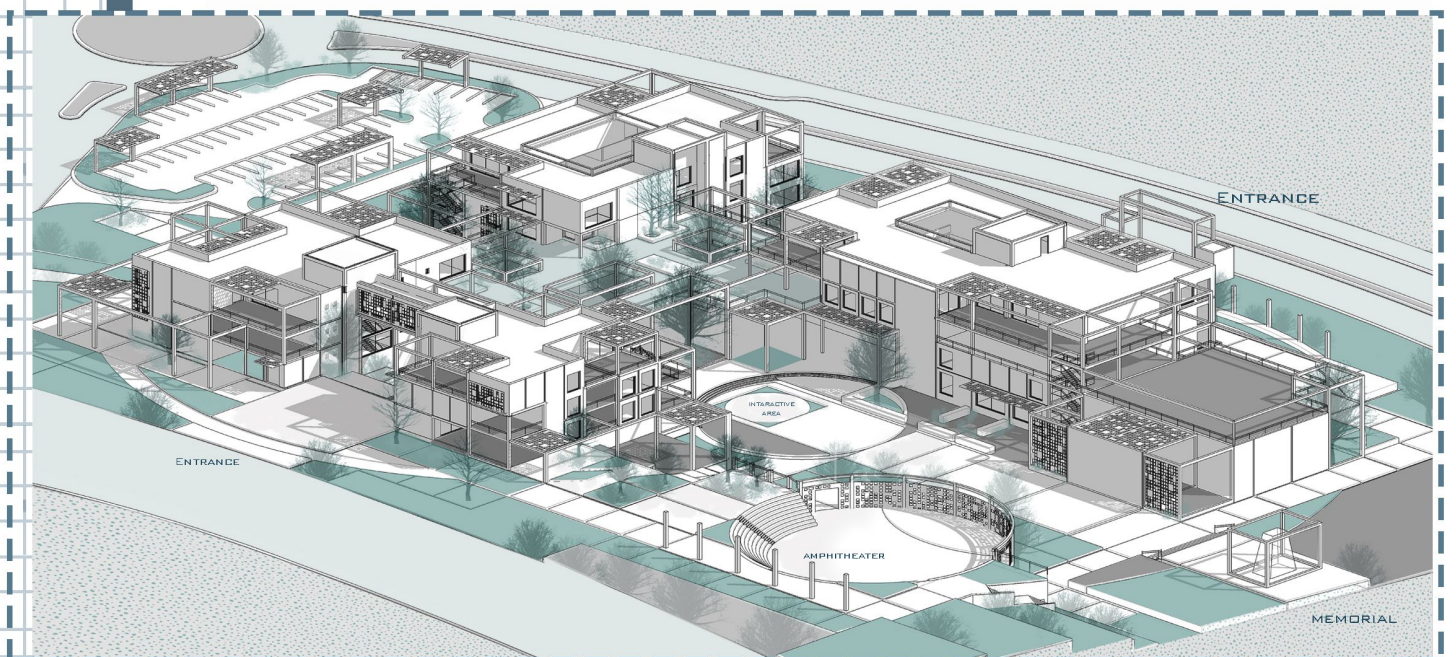


SITE PLAN

INNOVATION
SPACES



3D SCHEMATIC VIEW

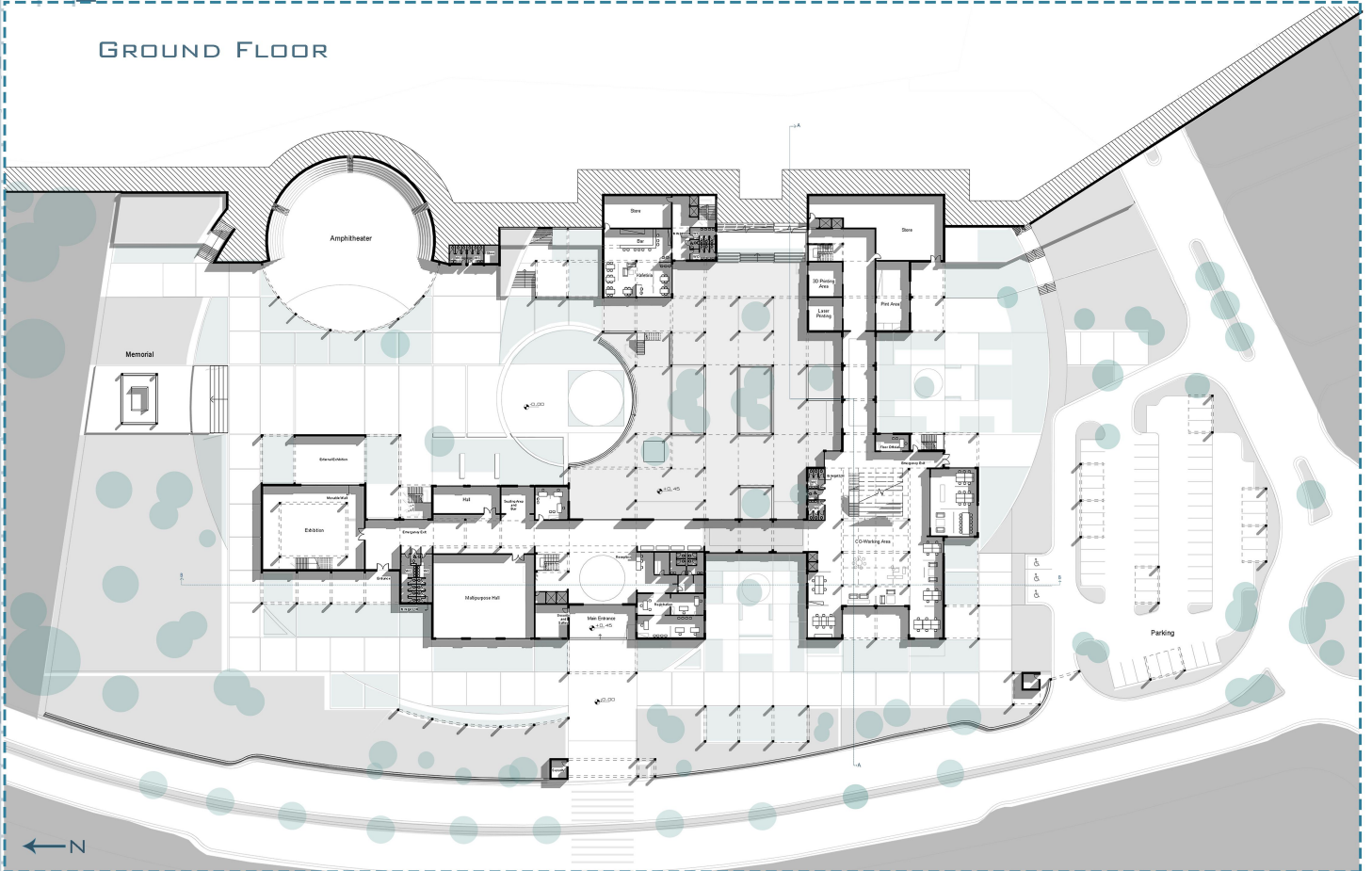


PLANS

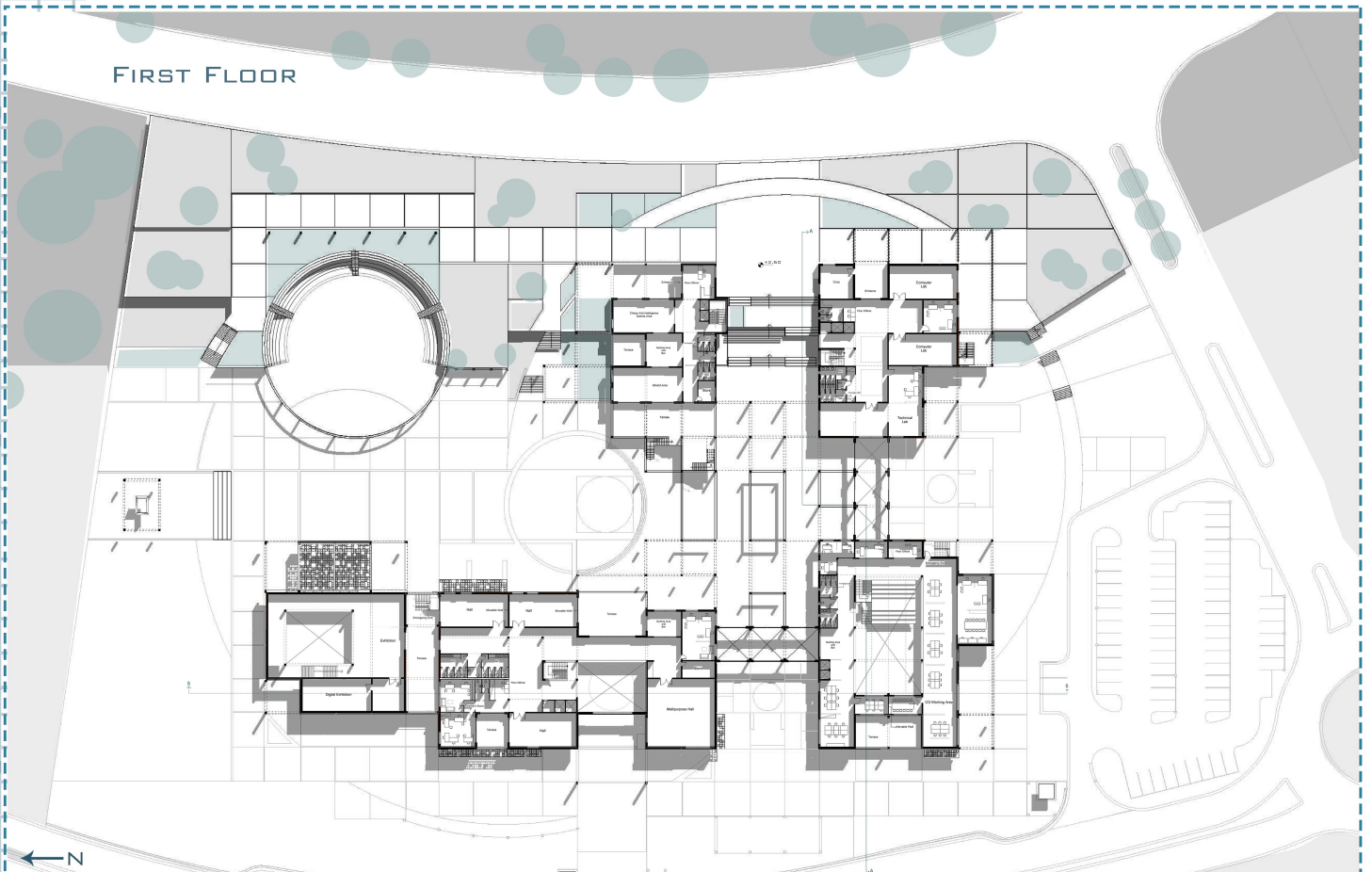
INNOVATION
SPACES

SCALE 1:500

GROUND FLOOR



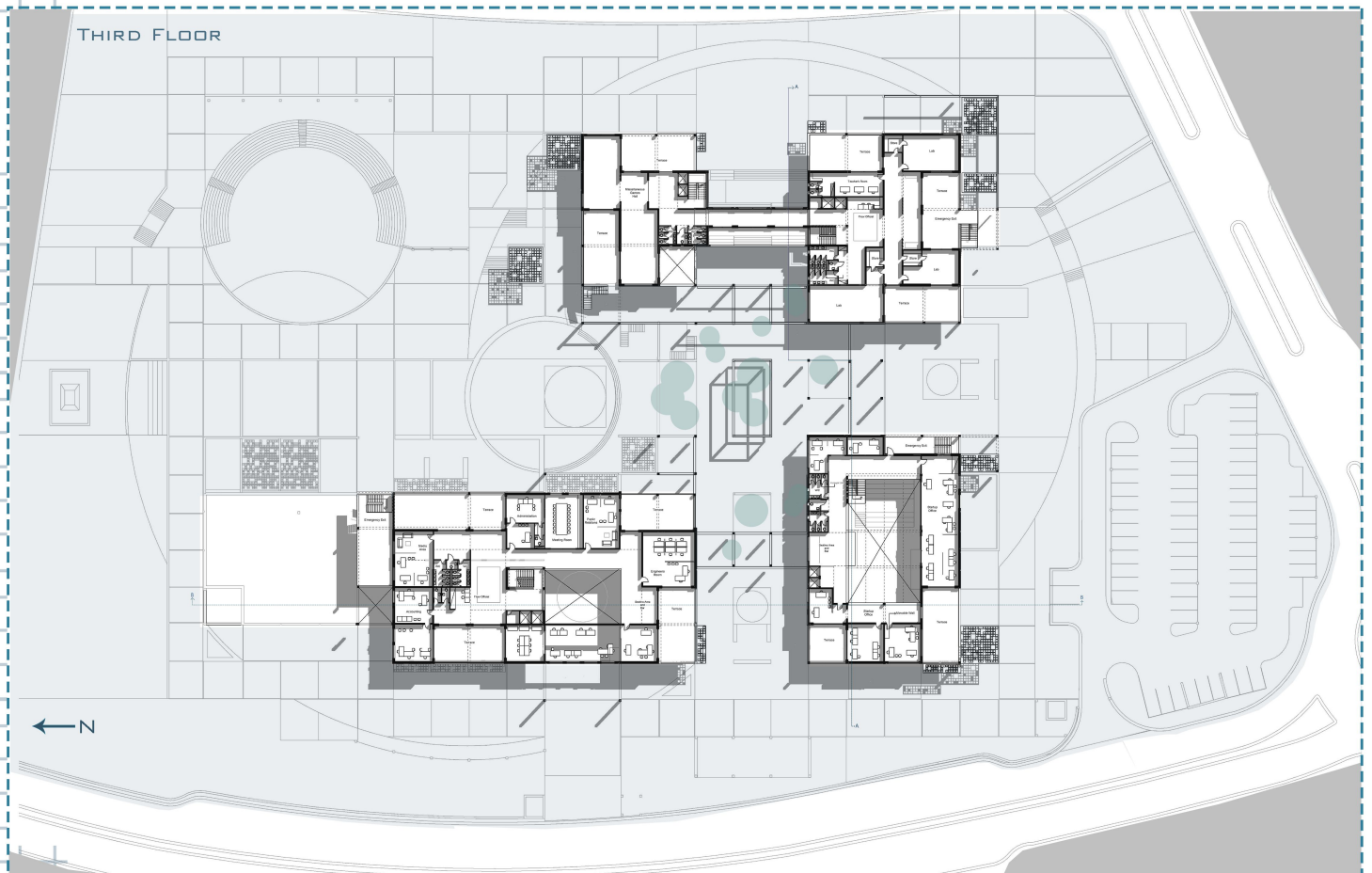
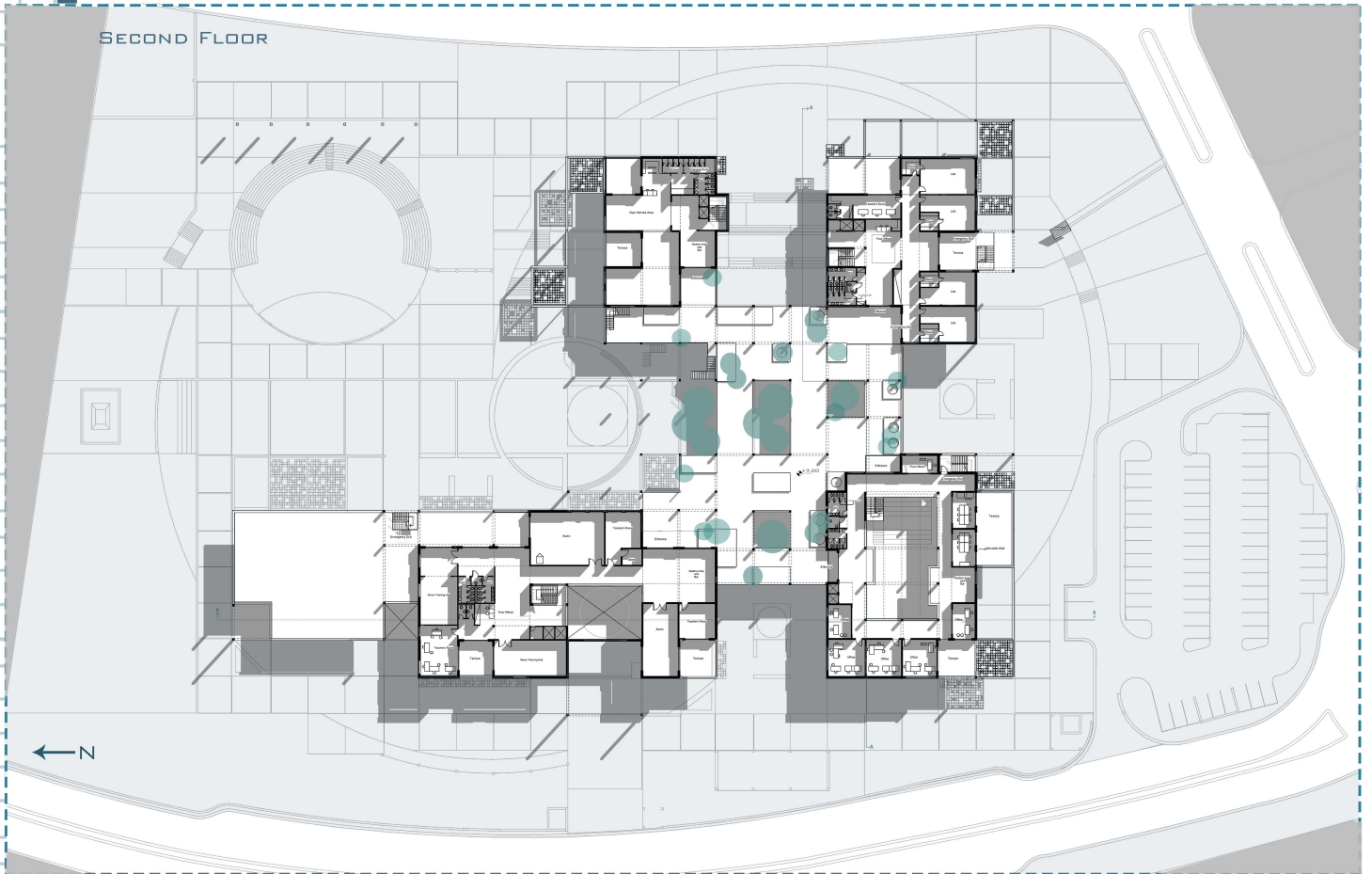
FIRST FLOOR



PLANS

INNOVATION
SPACES

SCALE 1:500



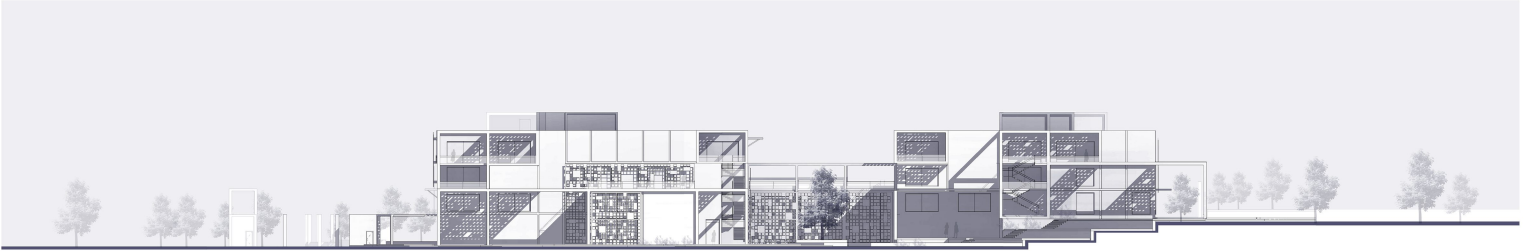
ELEVATIONS

INNOVATION
SPACES

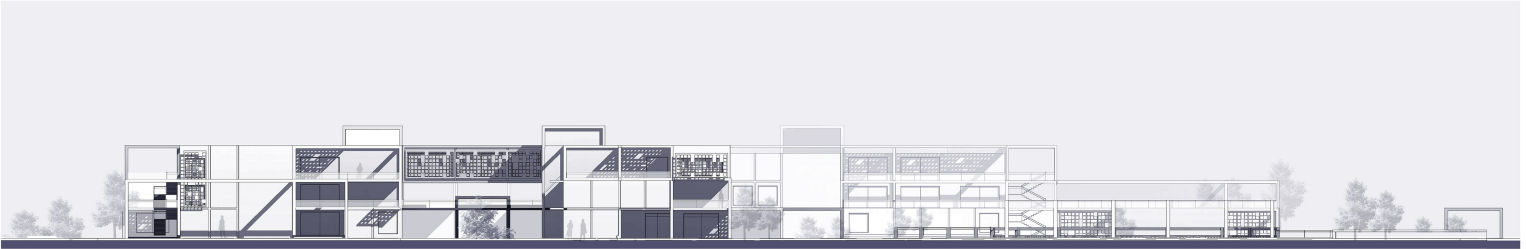
SCALE 1:500



SOUTH ELEVATION



EAST ELEVATION



NORTH ELEVATION

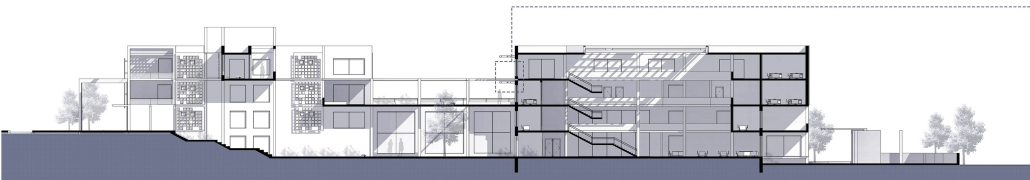


WEST ELEVATION

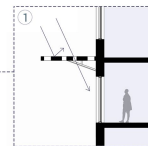
SECTIONS

SCALE 1:500

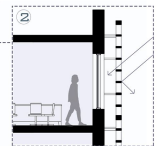
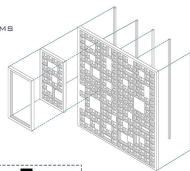
TO PROVIDE A COMFORTABLE WORKING ENVIRONMENT, USED 2 TYPE OF SHADING DEVICES ON EASTERN, SOUTHERN AND WESTERN FACADES



SECTION A-A



THE DIMENSIONS WERE DETERMINED ON THE ANGLES OF THE SUN USING SPECIAL PROGRAMS

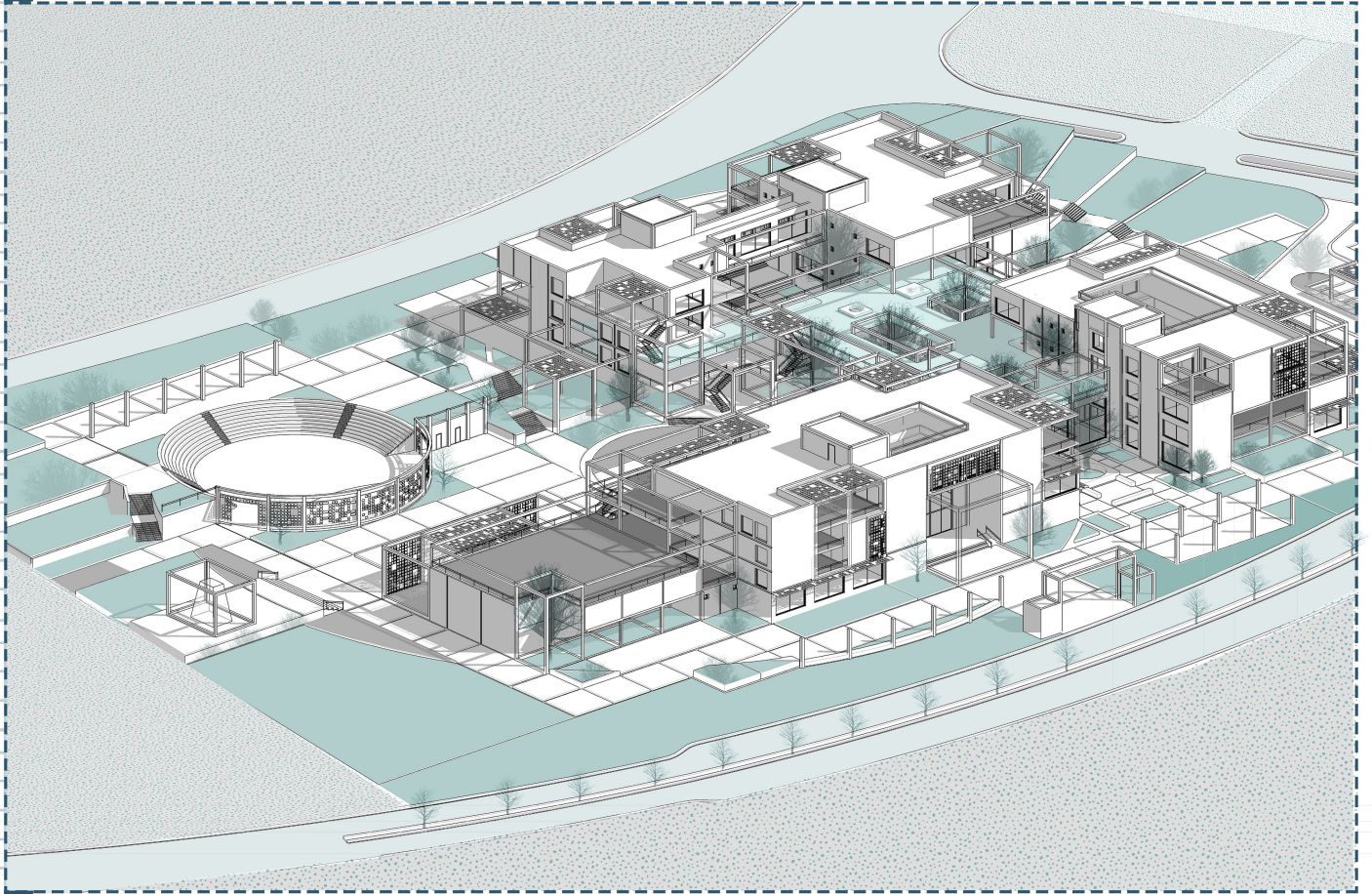


SECTION B-B

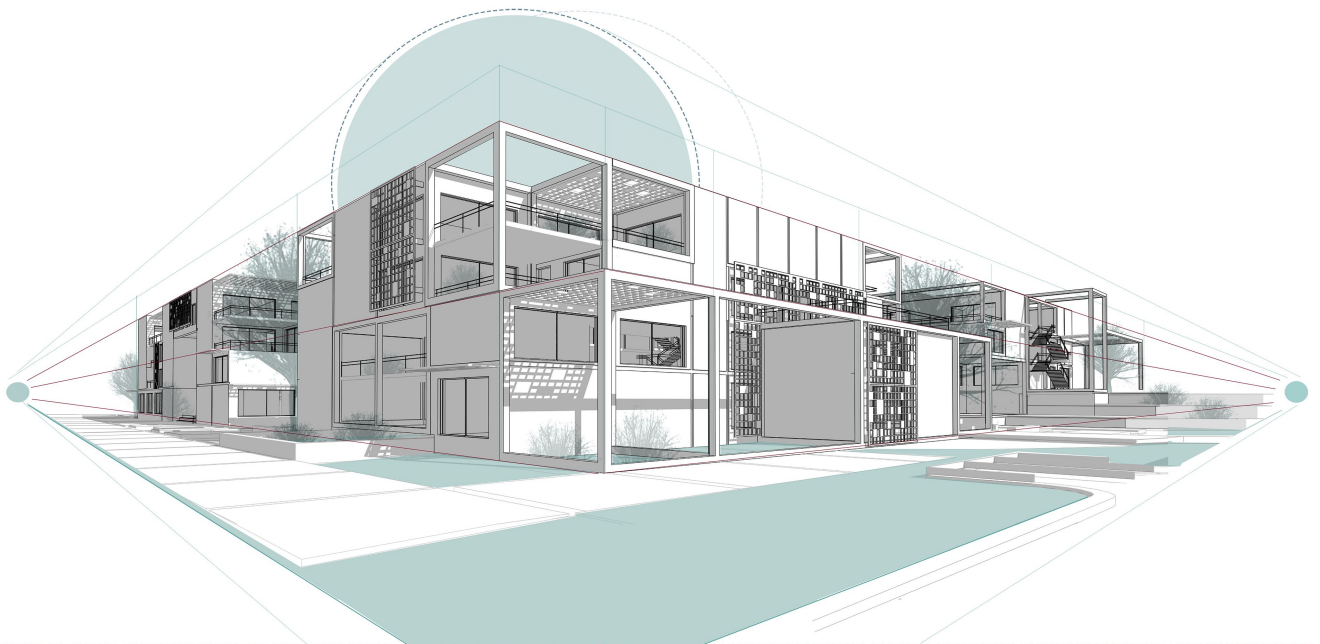
IN THE LONG HALL LIKE MULTI-PURPOSE HALL USING TRUSS SYSTEM IN CEILING.

3D SCHEMATIC VIEW

INNOVATION
SPACES



PERSPECTIVE 2 POINT





3D
SHOOT
INNOVATION
SPACES
REALITY RENDER
SHAHD NASER MEFLH

