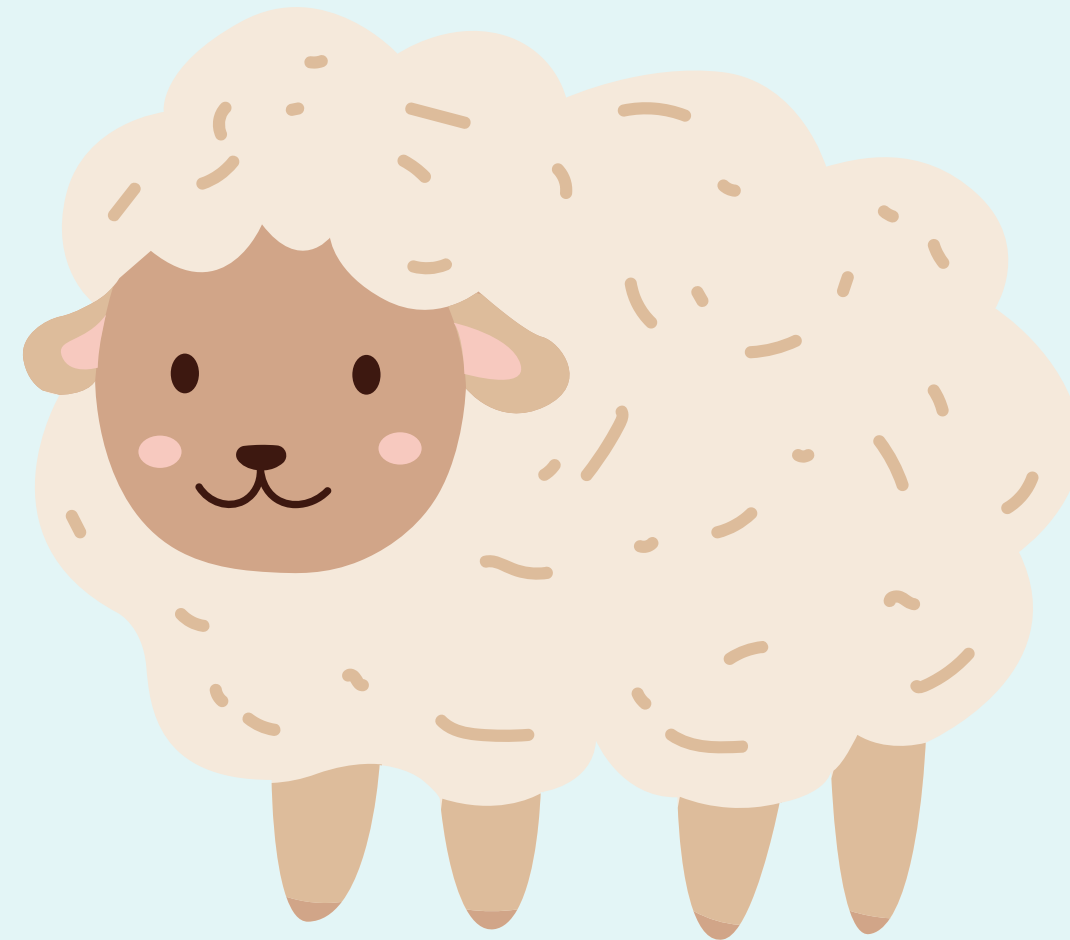


Sheep Milkpro

- An automatic feeding machine for sheep, which aims to produce hot milk to feed a large number of animals.





OUTLINE

1

Problems

3

Features

5

Constraints

7

Demo

2

Solution

4

Components

6

Future work

PROBLEMS

01

Unable to make milk automatically in accordance with the age of the animal

02

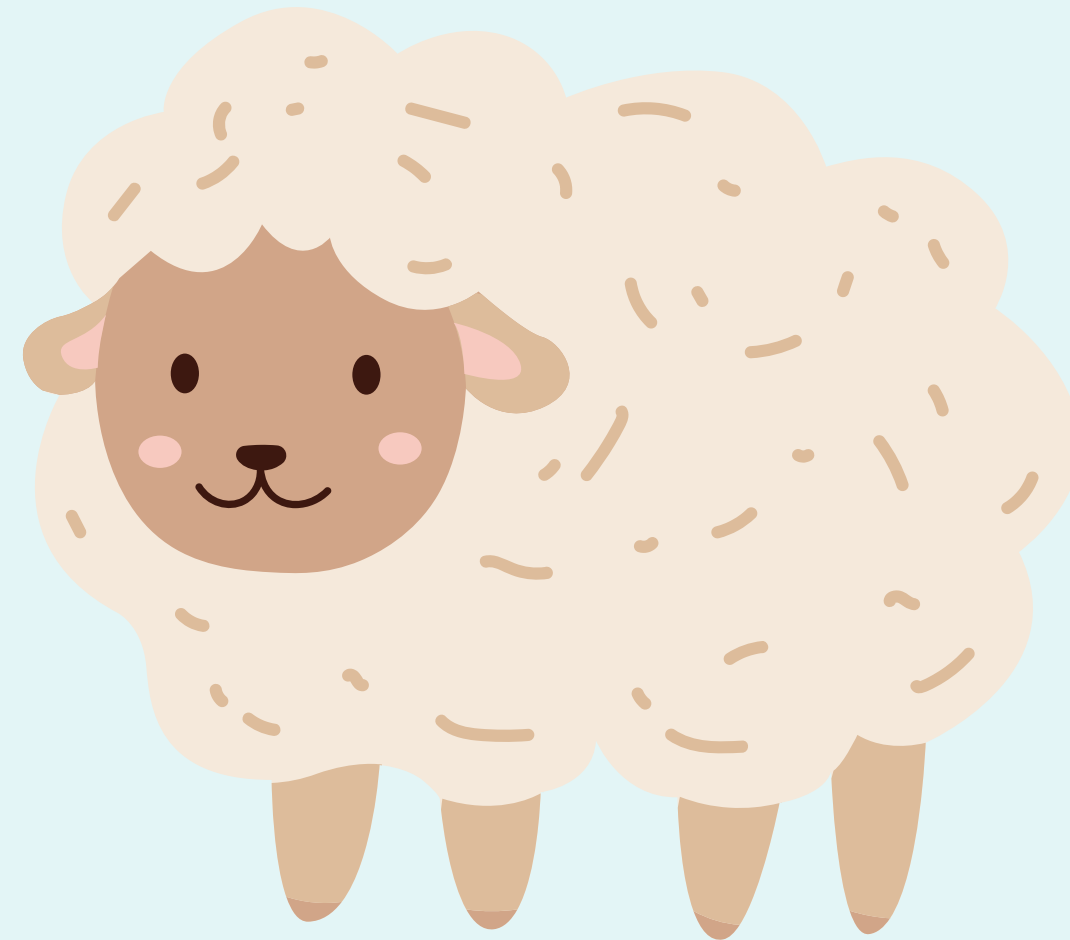
Unable to feed a large number at the same time

03

Unable to provide a cleaning process after each meal

Solution

A machine that automatically produces milk so that the farmer with large pens can feed as many animals as possible.



STORAGE SYSTEM

This sheepMilk pro machine has a storage system that also detect if water or milk is empty and sends notification to the admin.

WORKING SYSTEM

There are two ways to operate the machine, either by selecting the MODE manually, or through the RTC, which works automatically.

FEEDING SYSTEM

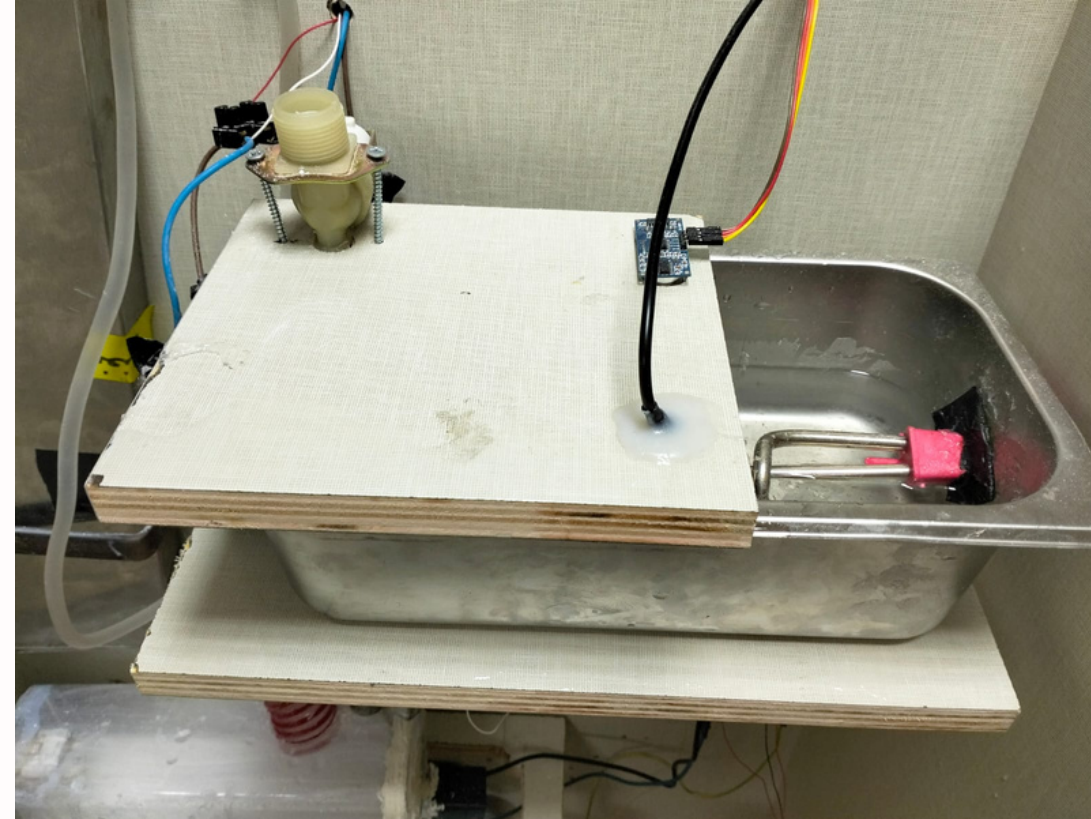
The storage system will feed the water and milk tank which it is under a certain limit

MOBILE APP

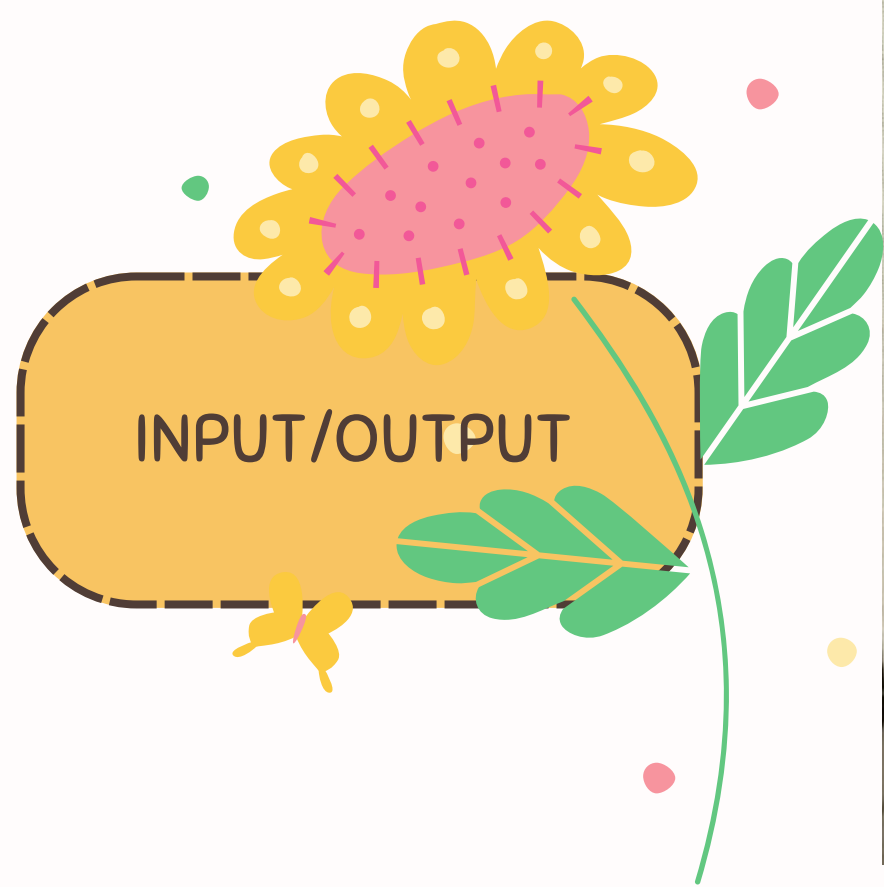
The admin has a mobile application where he receives notifications when the water and milk stock runs out



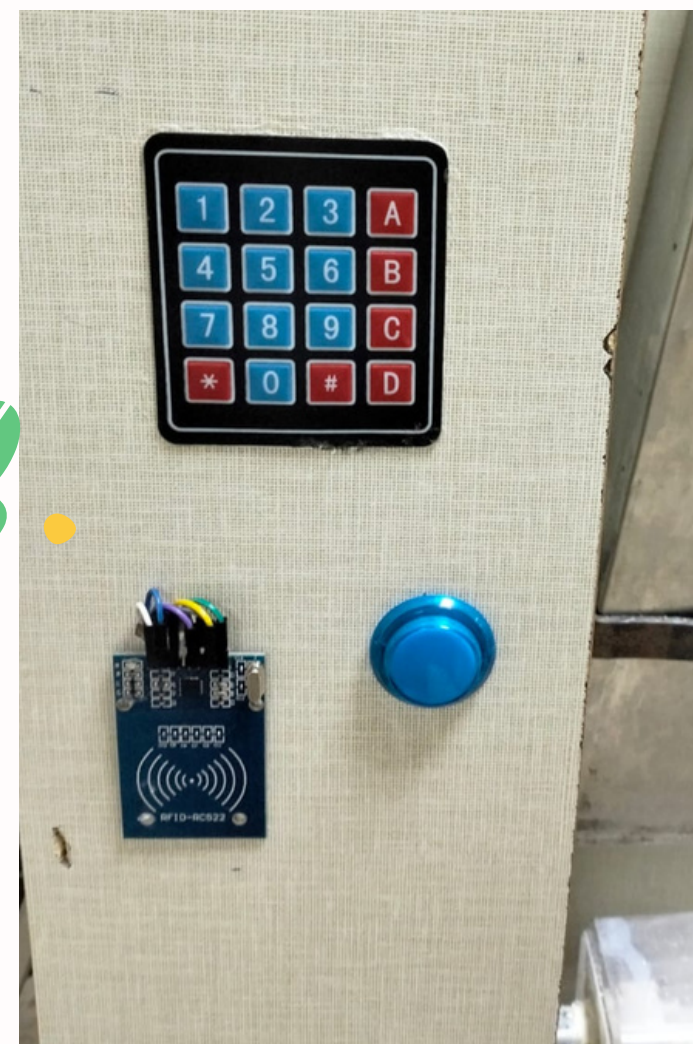
MILK STORAGE



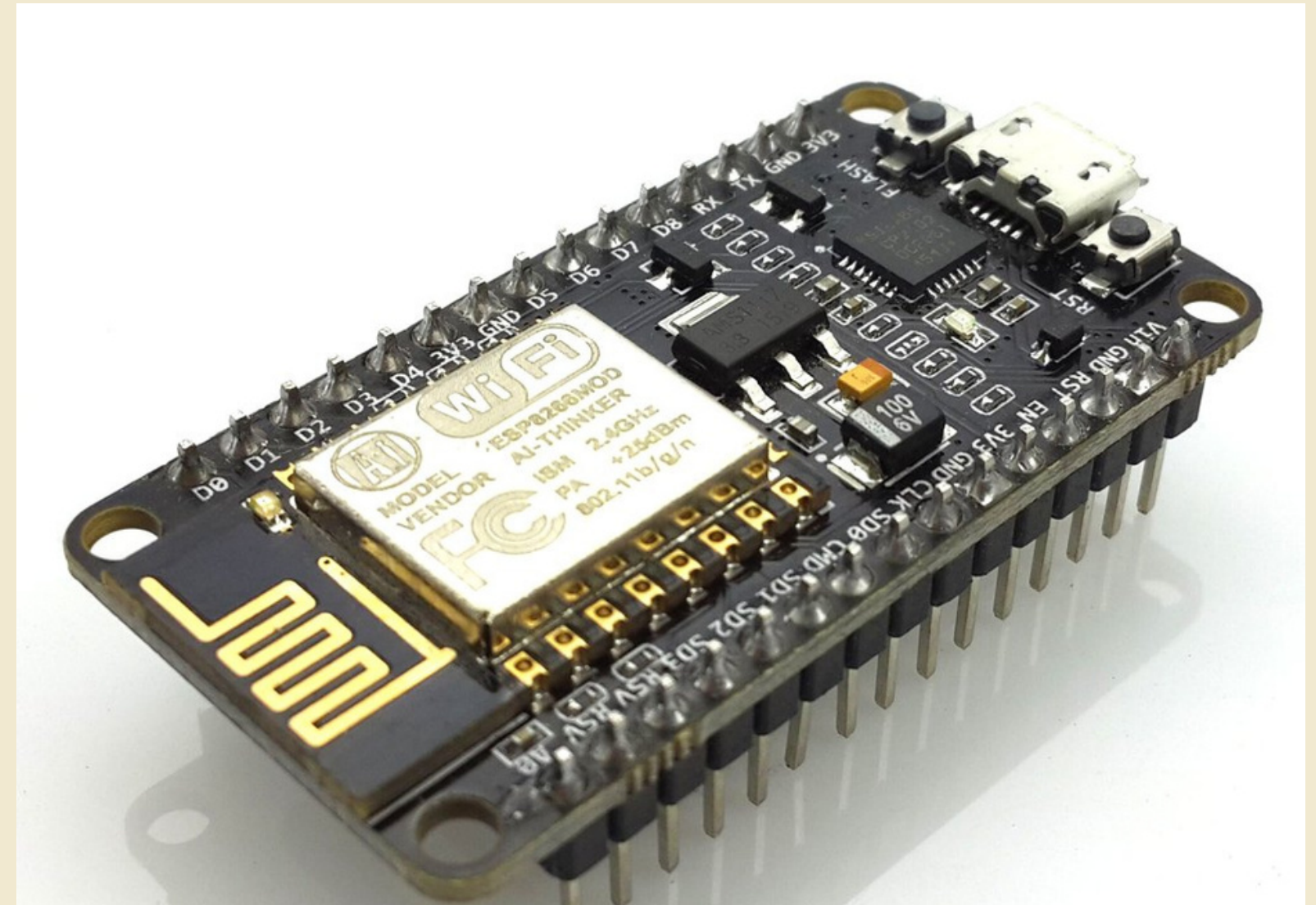
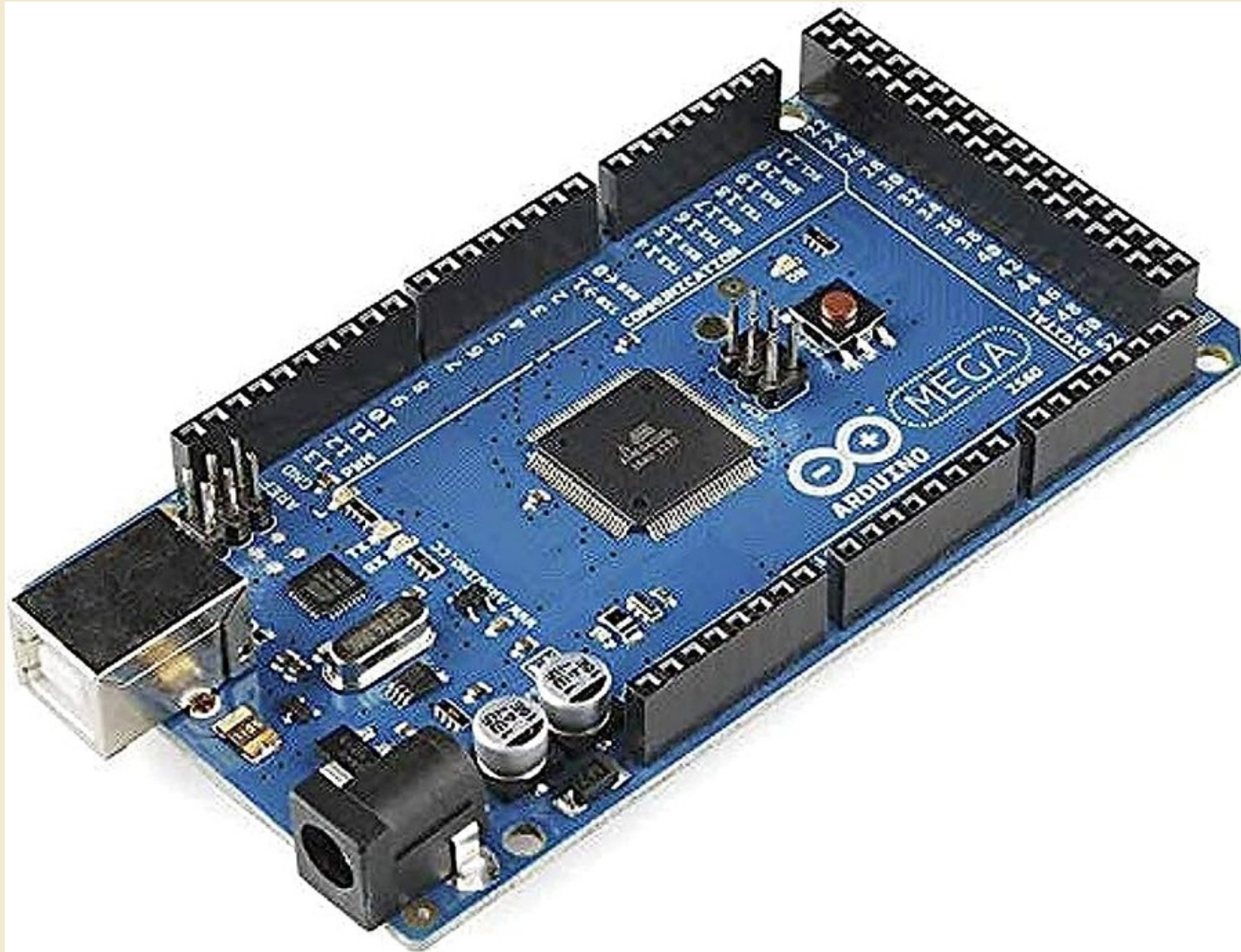
WATER STORAGE



INPUT/OUTPUT



Microcontrollers





CONSTRAINTS



These are some examples of the constraints we faced



1

Power distribution

2

Size and weight

3

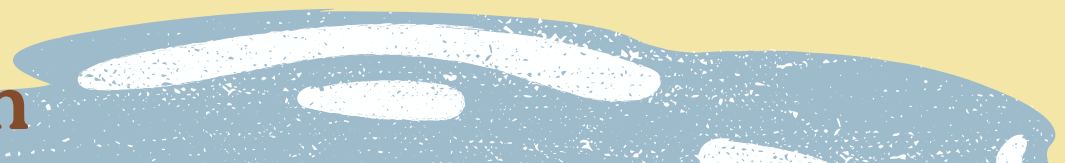
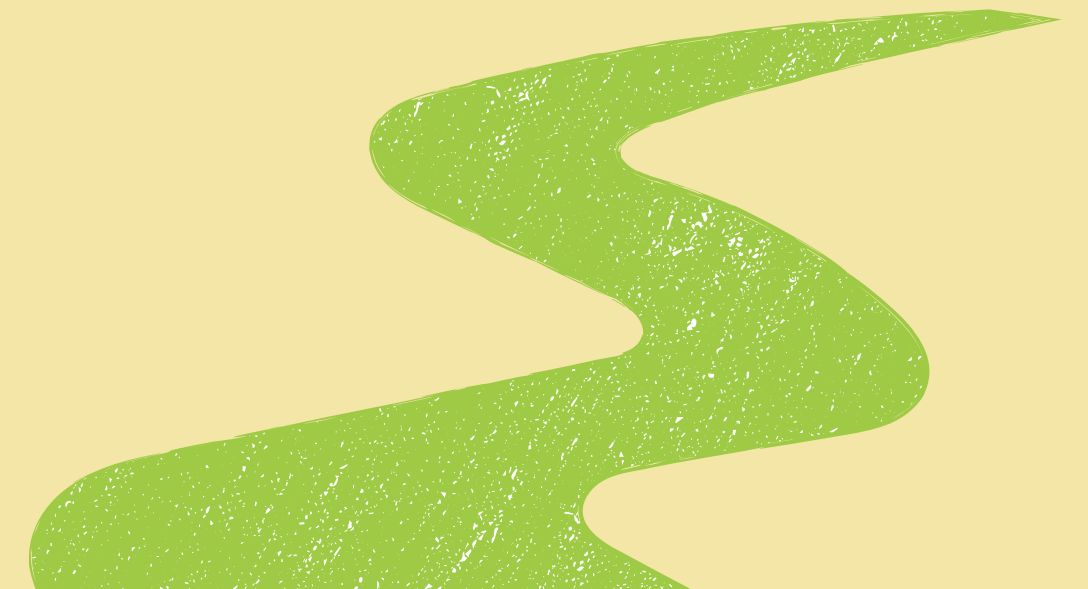
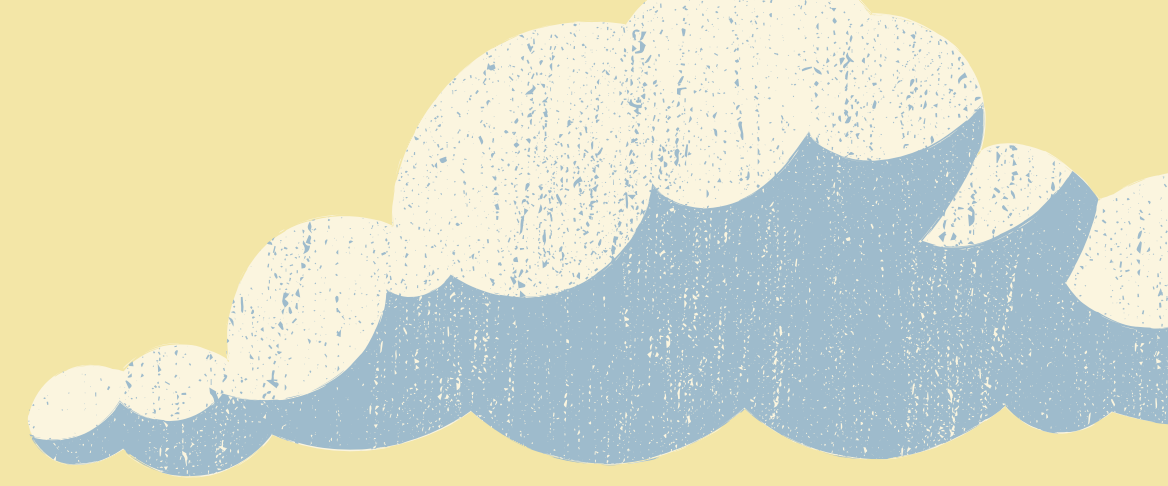
Precision and accuracy



Future work

- Providing special vitamins
- Mobile application development
- Control the amounts of water and milk through it

Demo



**ANY
QUESTIONS
?**



Thank you

