



FRIENDLY INTELLIGENT ROBOT

HOODIE

Supervised by: Dr. Hikmat Darawshi

By Mustafa Irshaid & Majed Kawa



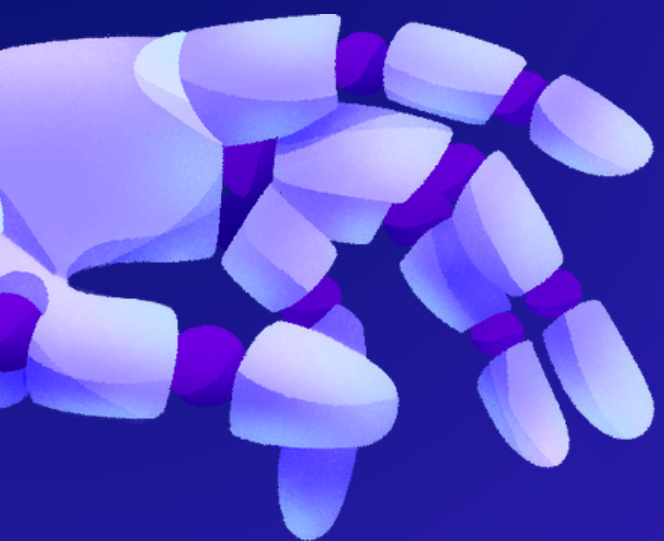
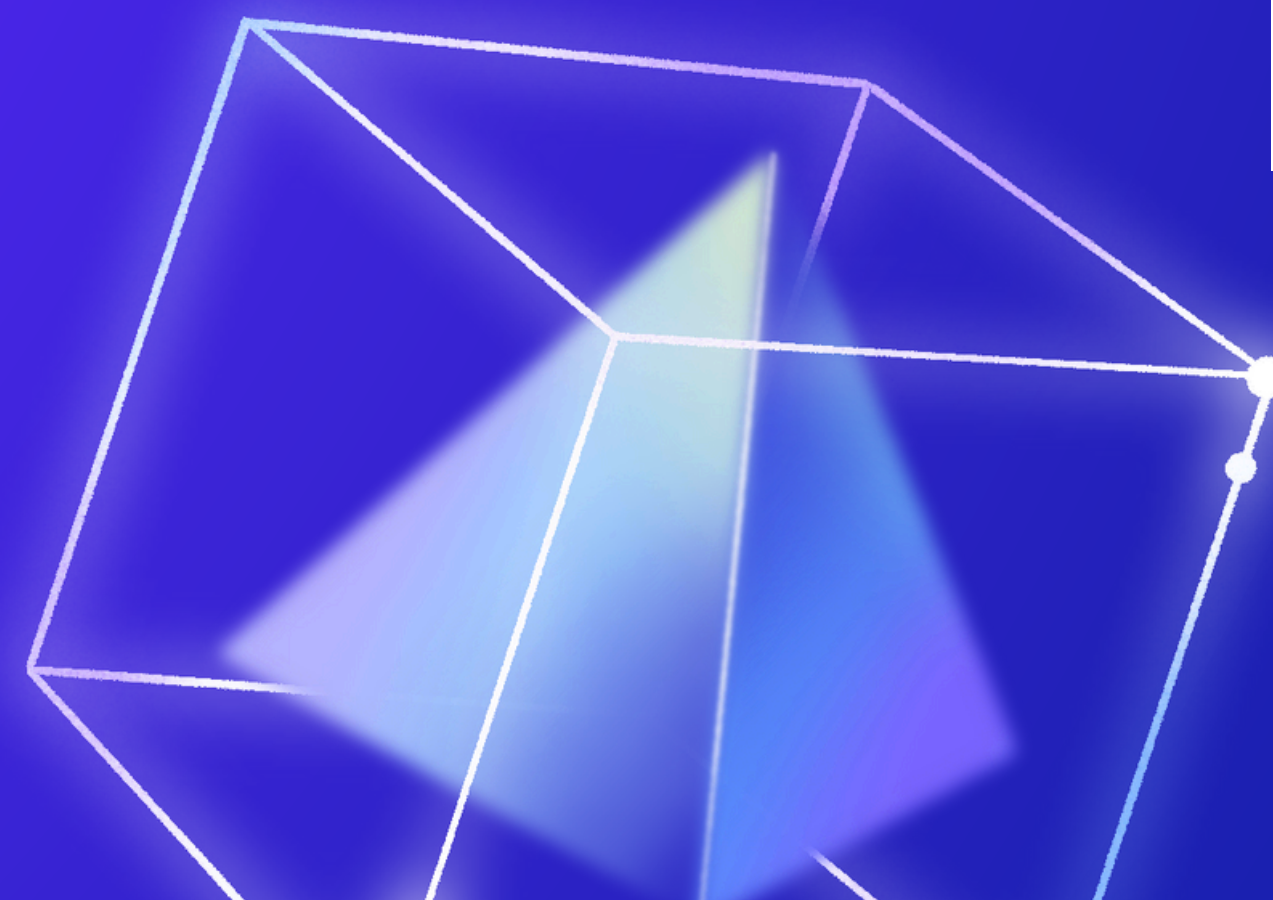


TABLE OF CONTENTS

• Problem & Solution	01
• Features	02
• Implementation	03
• Constraints	04
• Future work	05



PROBLEM

-
- Accessing the GPT model requires manually opening an interface and typing out questions.
 - Time-consuming and inconvenient, especially in hands-free or multitasking situations.



SOLUTION

-
- Develop a robot that can be controlled by voice commands to interact with the GPT model.
 - Voice recognition technology to allow users to speak their questions and receive spoken responses.
 - Design the robot to be user-friendly



FEATURES



Voice commands



Real-time camera



interactive movements



Feelings



Helps to identify the objects or give a description



Draw shapes by movements

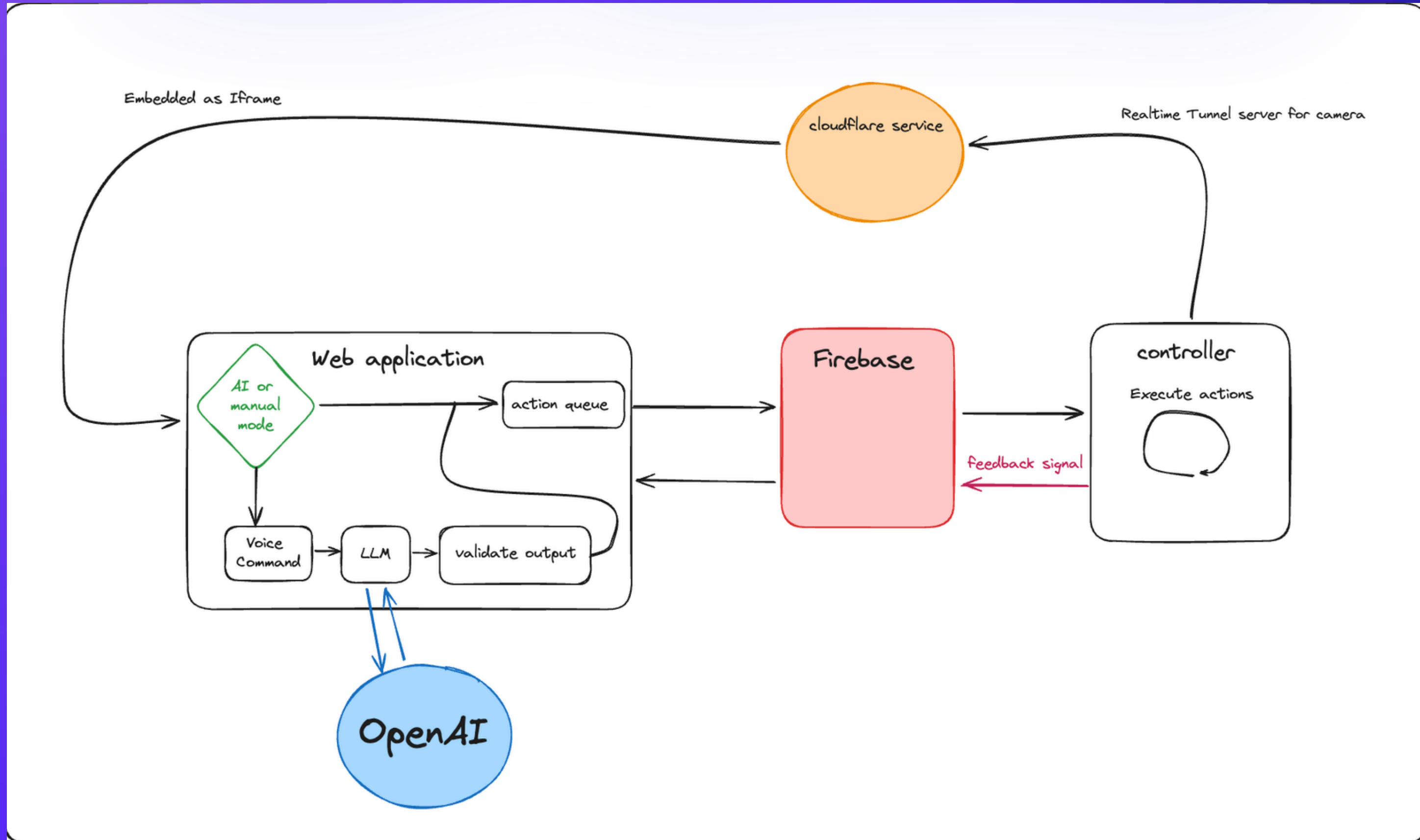


Helps with the decision making

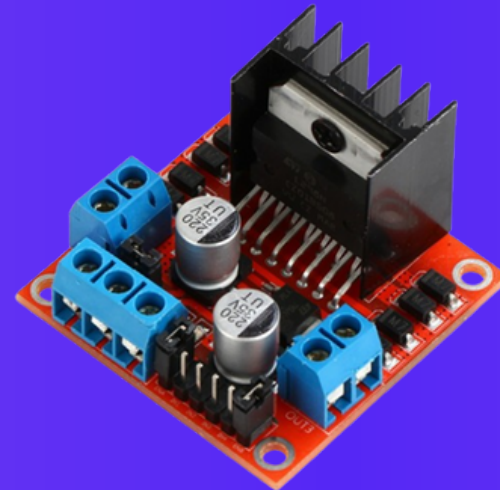
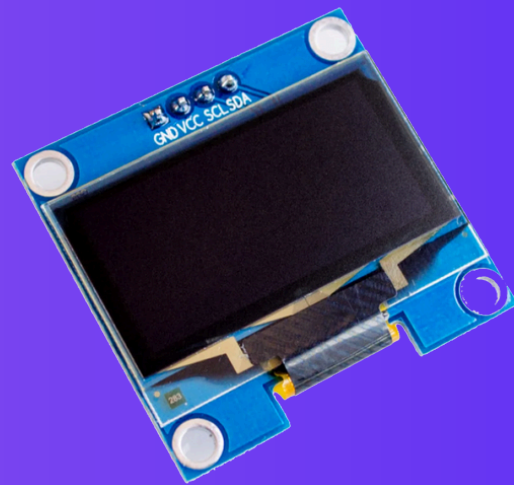
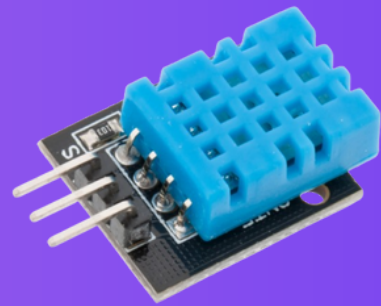
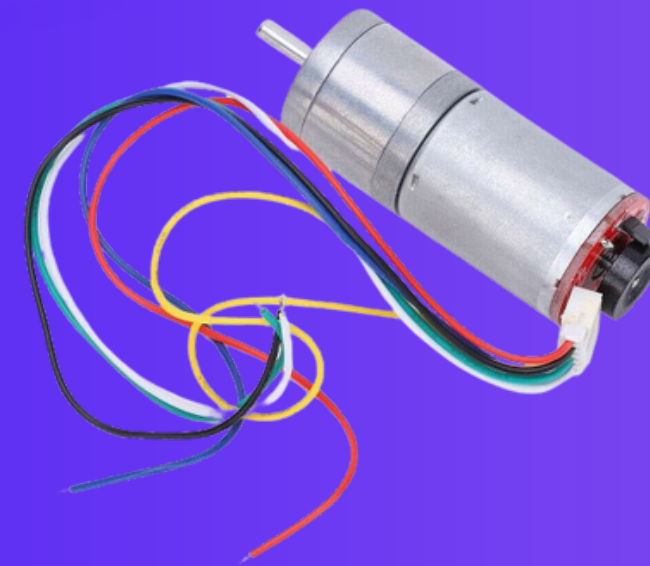
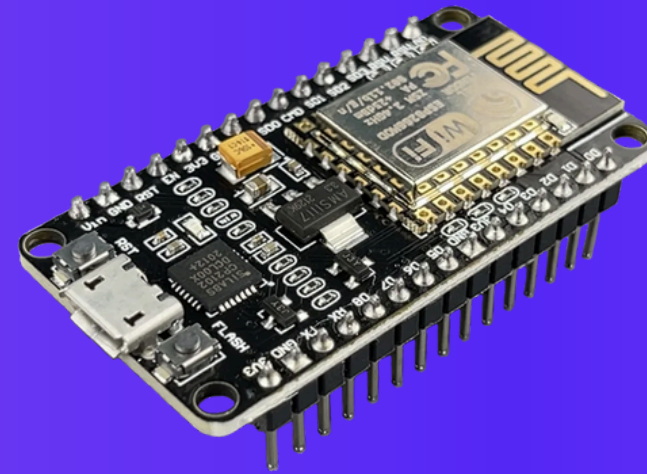
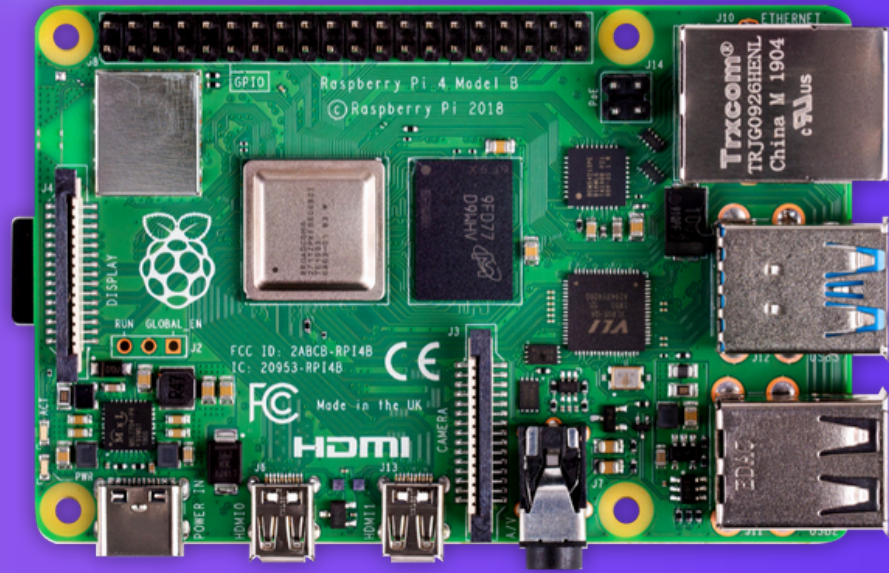


Move for a certain distance

PROJECT ARCHITECTURE



COMPONENTS



CONSTRAINTS

- Design
- Power Source
- Ultra-sonics
- Computational power



FUTURE WORK



ANALYZE VIDEOS

ENHANCE ARM MOVEMENTS

SENSORS

BATTERY PERCENTAGE



THANK YOU!

