

**Najah National University
Urban Planning Engineering
Department
Graduation Project
2016-2017**



Placemaking in Area “C”
The Forgotten Village... “Yanoun”

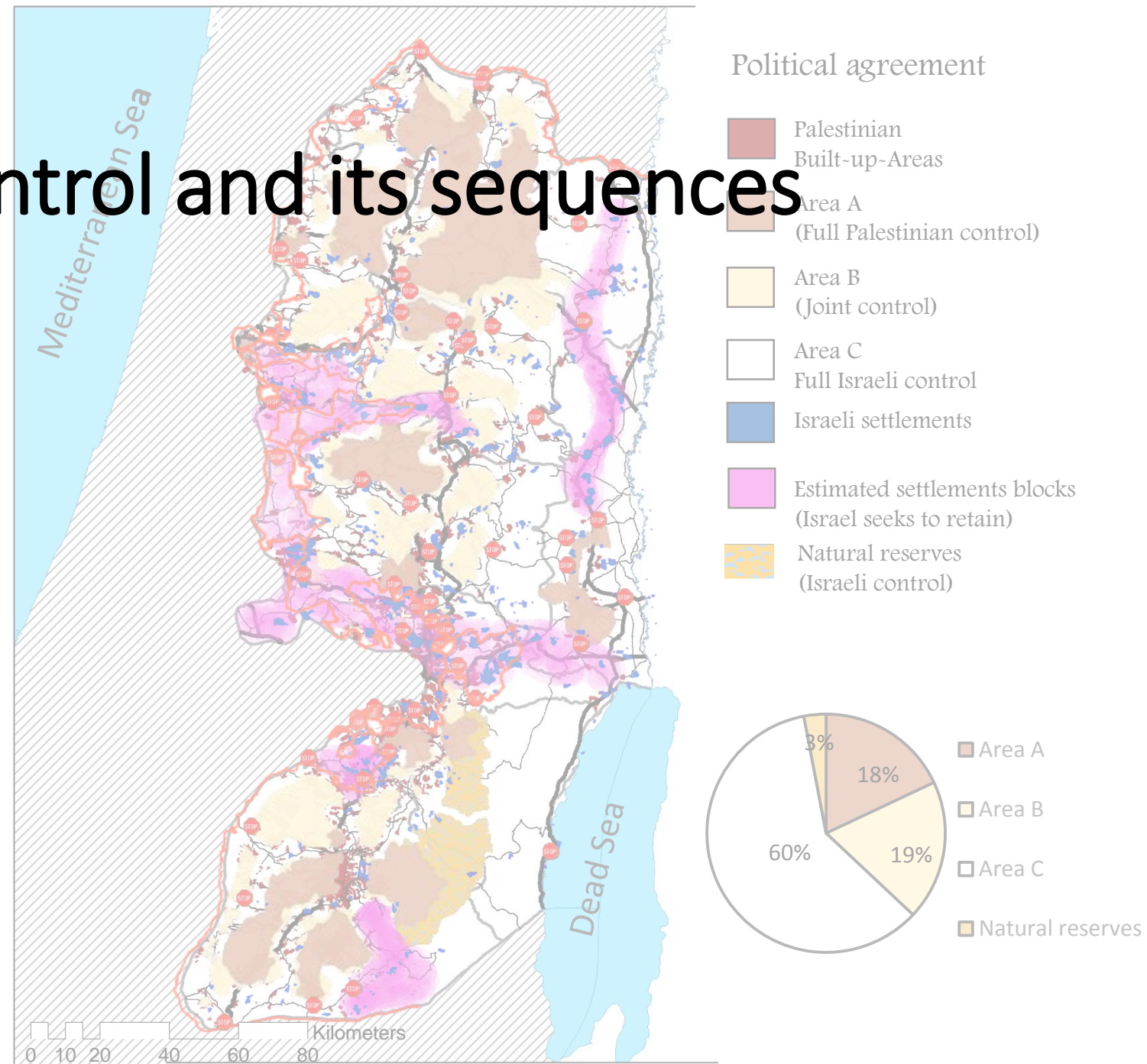
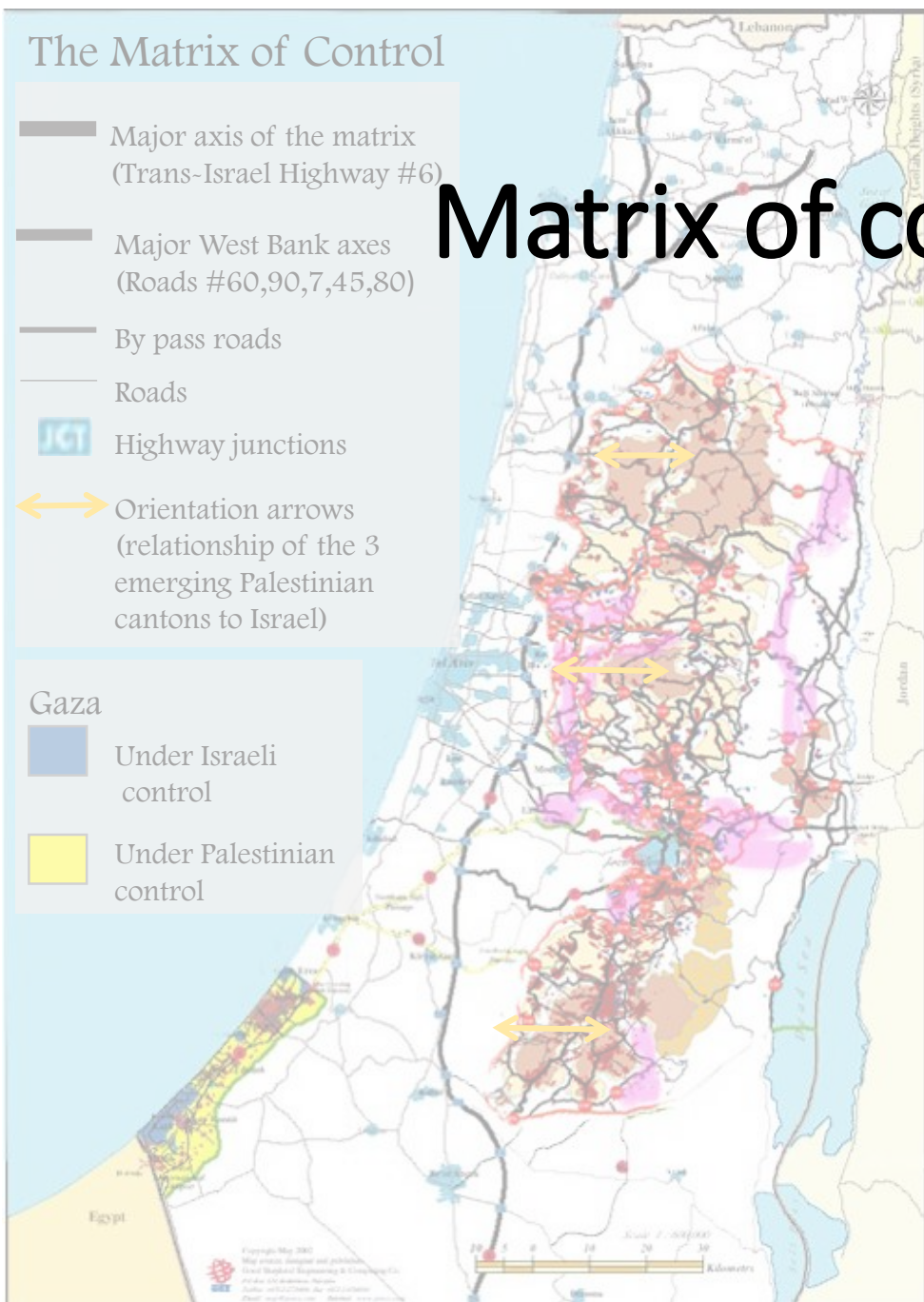
By:
Hala Shattawi

Supervisors :
Dr. Zahra` Zawawi
Dr. Ali Abd-Alhameed
Arch. Salah Shakhsheer
Eng. Aya Hilal

Project Objectives and Motivations

- Spot the light on the vulnerable communities in Area C which is the corner stone for the Palestinian statehood.
- Enhance the steadiness of people who are living there ,strength resillience,facilitate access, freedom movement and secure their basic human rights.
- Change the typical grey image about those areas as a “prohibited zone” and make it livable attractive place through creating facts on the ground.

Matrix of control and its sequences



The Matrix of Control

Major axis of the matrix
(Trans-Israel Highway #6)

Major West Bank axes
(Roads #60,90,7,45,80)

By pass roads

Roads

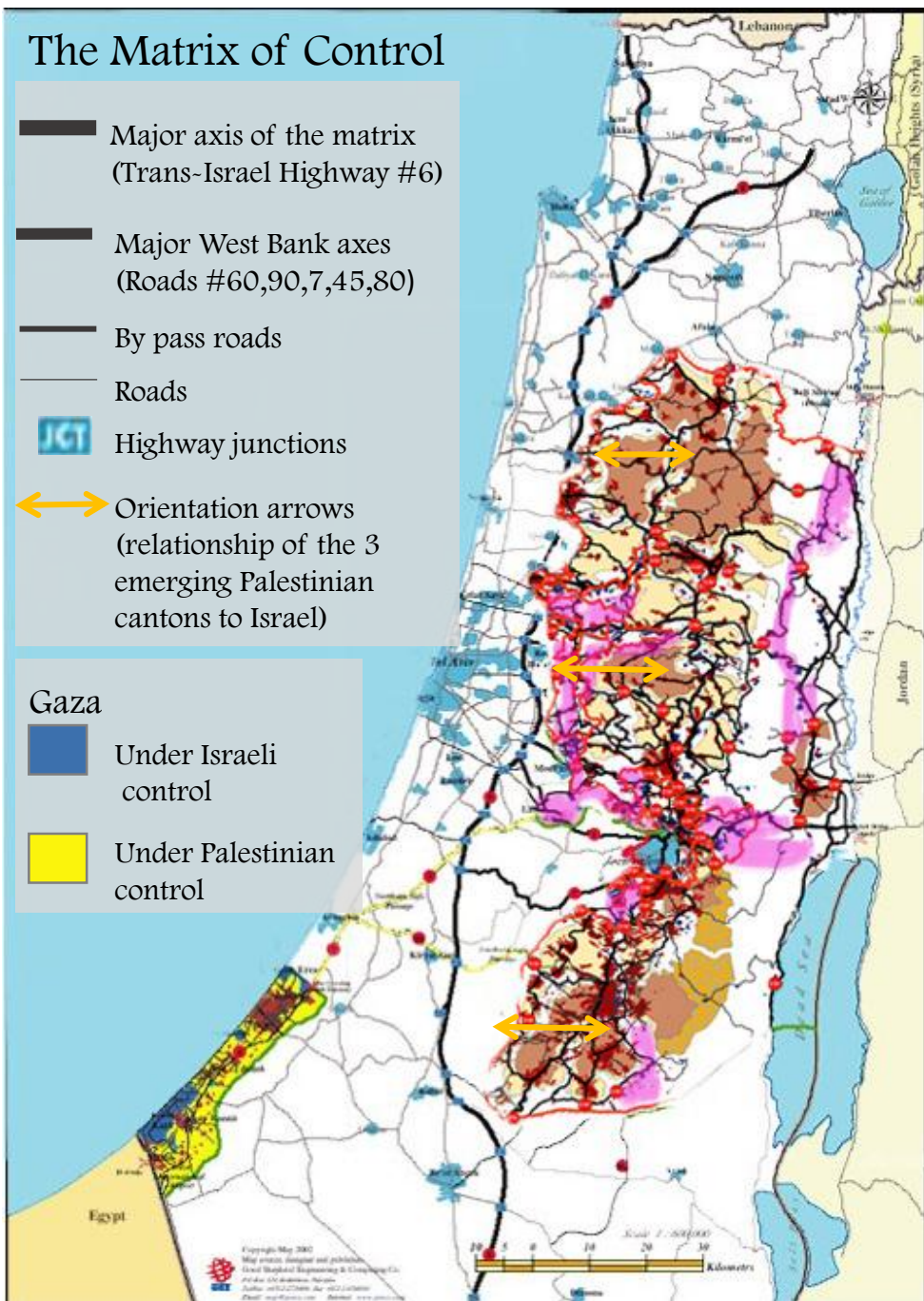
Highway junctions

Orientation arrows
(relationship of the 3
emerging Palestinian
cantons to Israel)

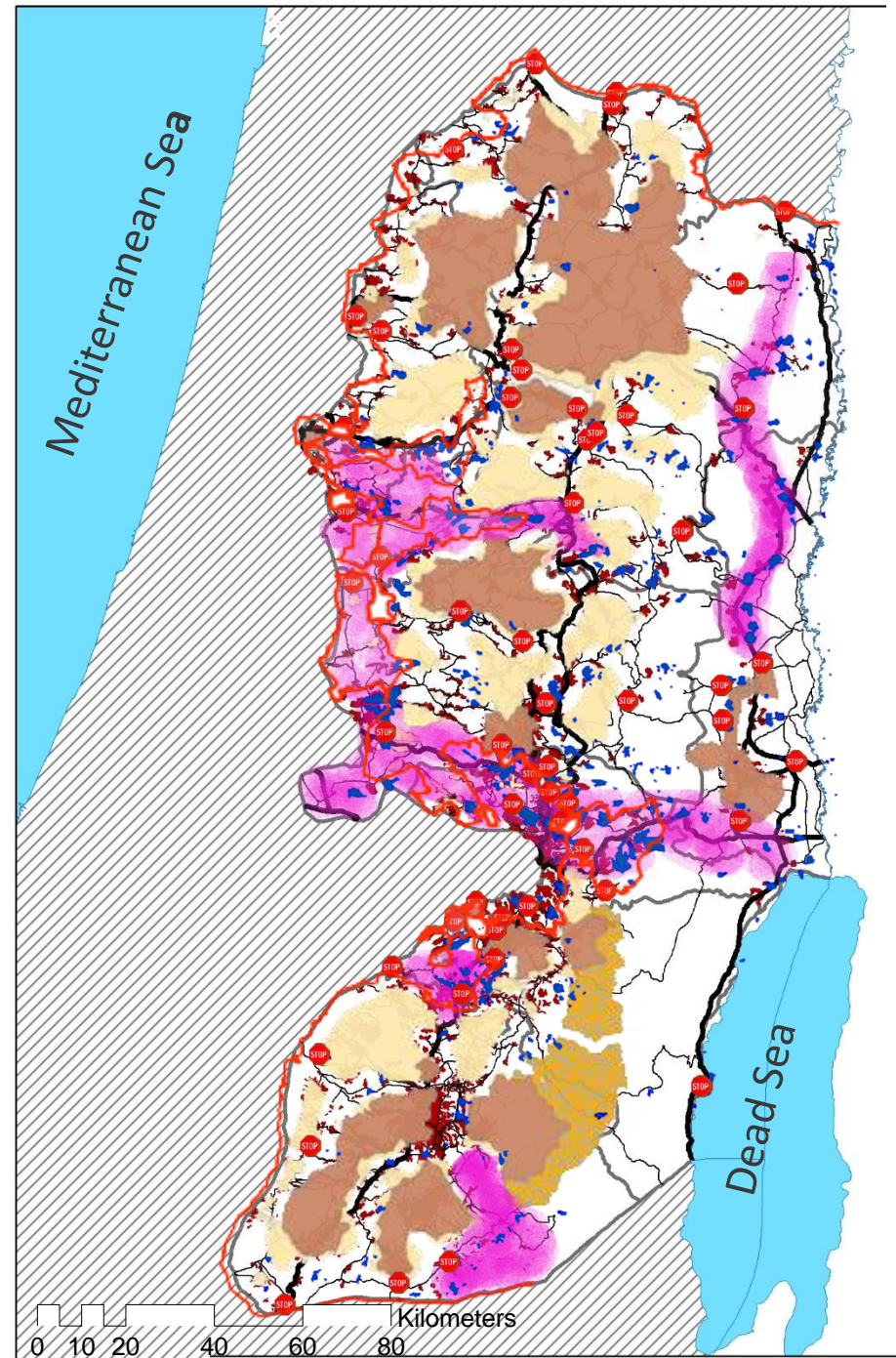
Gaza

Under Israeli
control

Under Palestinian
control



Mediterranean Sea



Political agreement

Palestinian
Built-up-Areas

Area A
(Full Palestinian control)

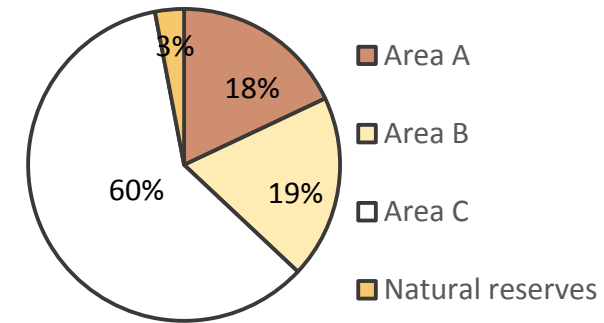
Area B
(Joint control)

Area C
Full Israeli control

Israeli settlements

Estimated settlements blocks
(Israel seeks to retain)

Natural reserves
(Israeli control)



The Matrix of Control

Major axis of the matrix
(Trans-Israel Highway #6)

Major West Bank axes
(Roads #60,90,7,45,80)

By pass roads

Roads

Highway junctions

Orientation arrows
(relationship of the
emerging Palestinian
cantons to Israel)

Gaza

Under Israeli
control

Under Palestinian
control

Control every aspect of Palestinian life in the
Occupied Territories

Political agreement

Palestinian
Built-up-Areas

Area A
(Full Palestinian control)

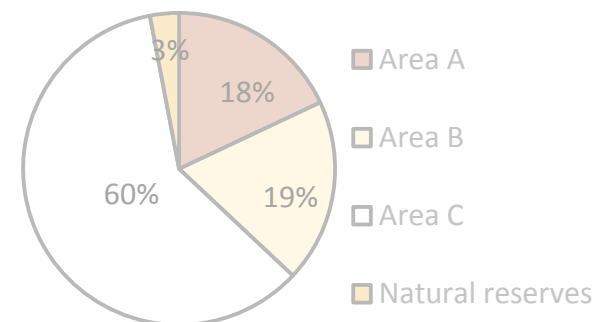
Area B
(Joint control)

Area C
Full Israeli control

Israeli settlements

Estimated settlements blocks
(Israel seeks to retain)

Natural reserves
(Israeli control)



The Matrix of Control

Major axis of the matrix
(Trans-Israel Highway #6)

Major West Bank axes
(Roads #60,90,7,45,80)

By pass roads

Roads

Highway junctions

Orientation arrows
(relationship of the 3
emerging Palestinian
cantons to Israel)

Gaza

Under Israeli
control

Under Palestinian
control



Political agreement

Palestinian
Built-up-Areas

Area A
(Full Palestinian control)

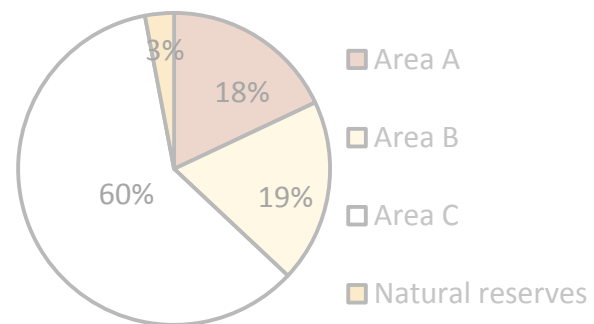
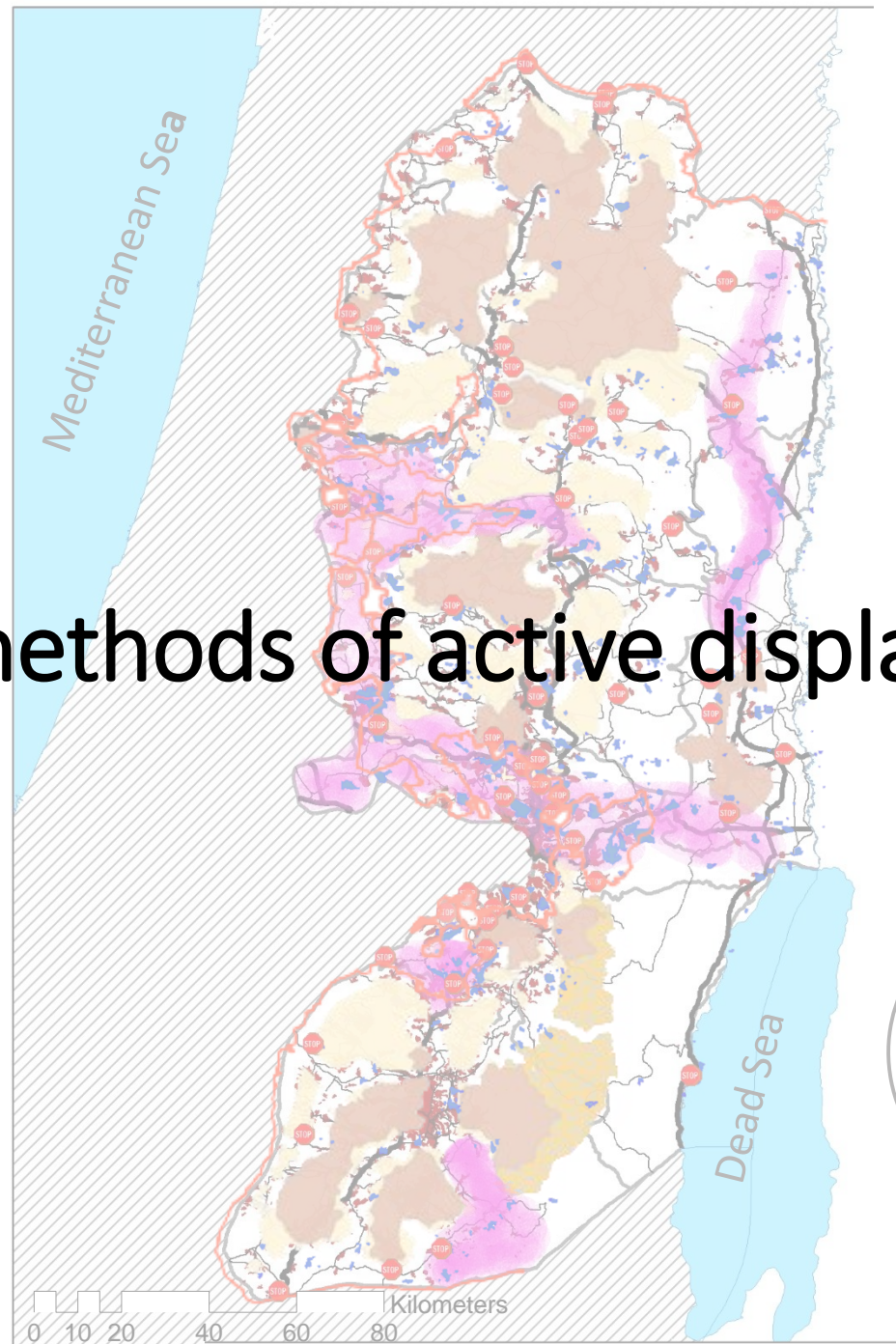
Area B
(Joint control)

Area C
Full Israeli control

Israeli settlements

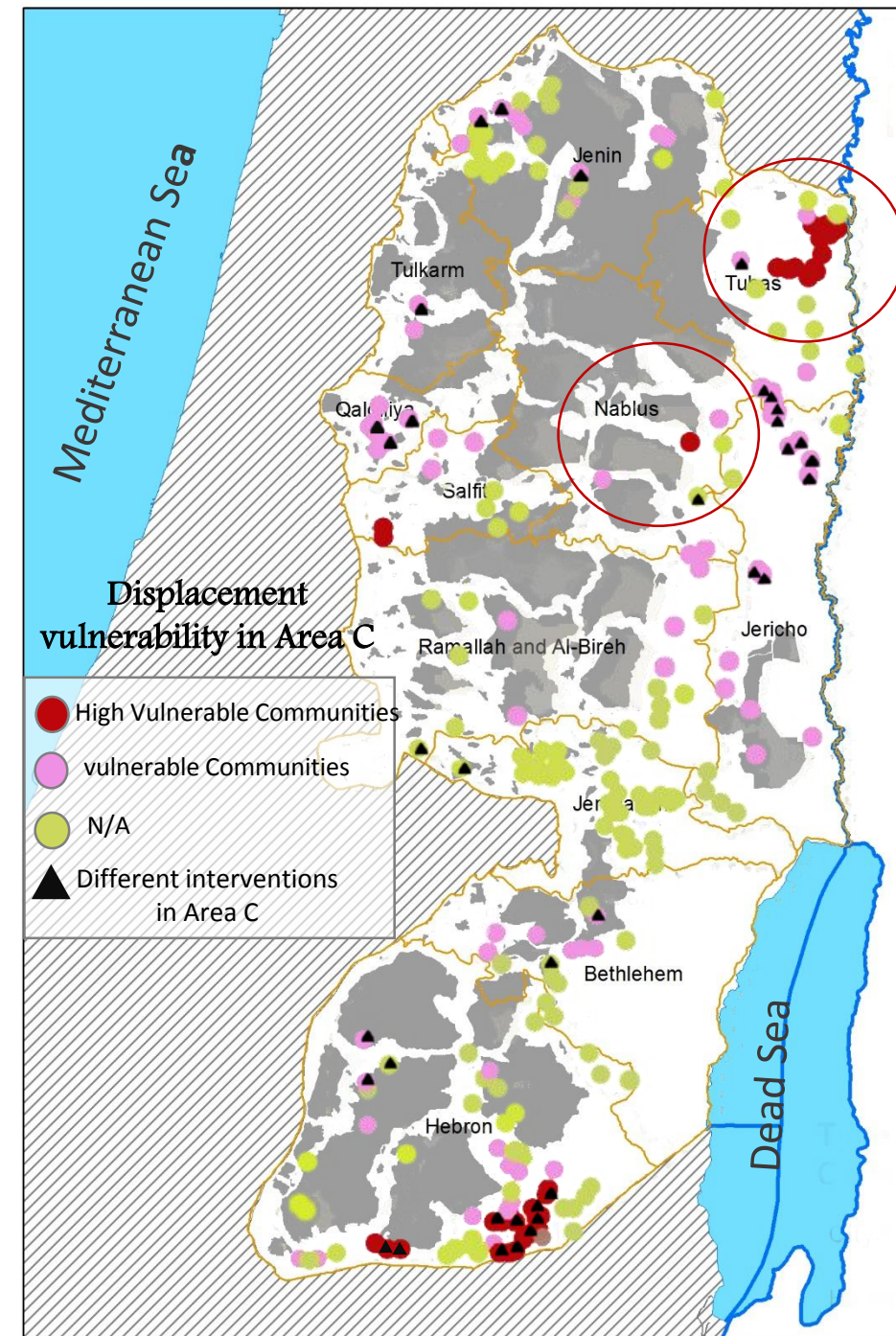
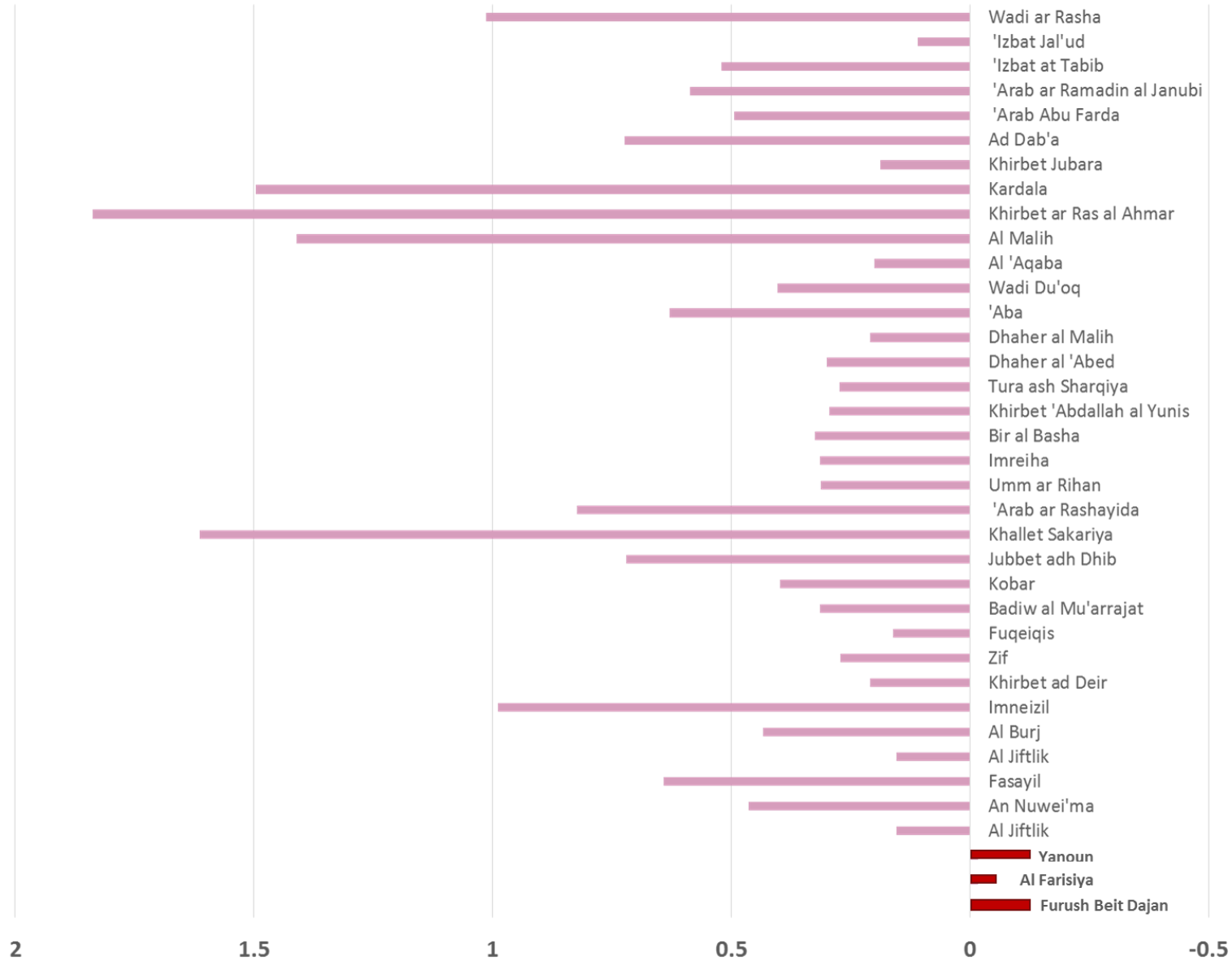
Estimated settlements blocks
(Israel seeks to retain)

Natural reserves
(Israeli control)

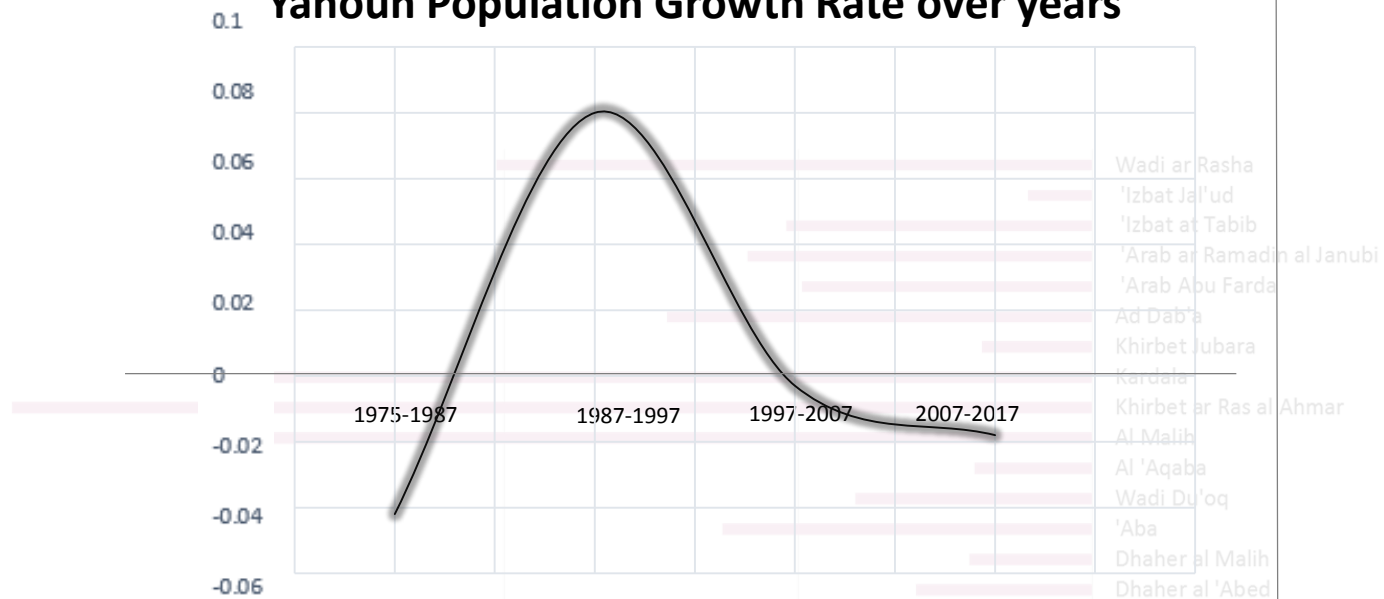


The use of diverse methods of active displacement

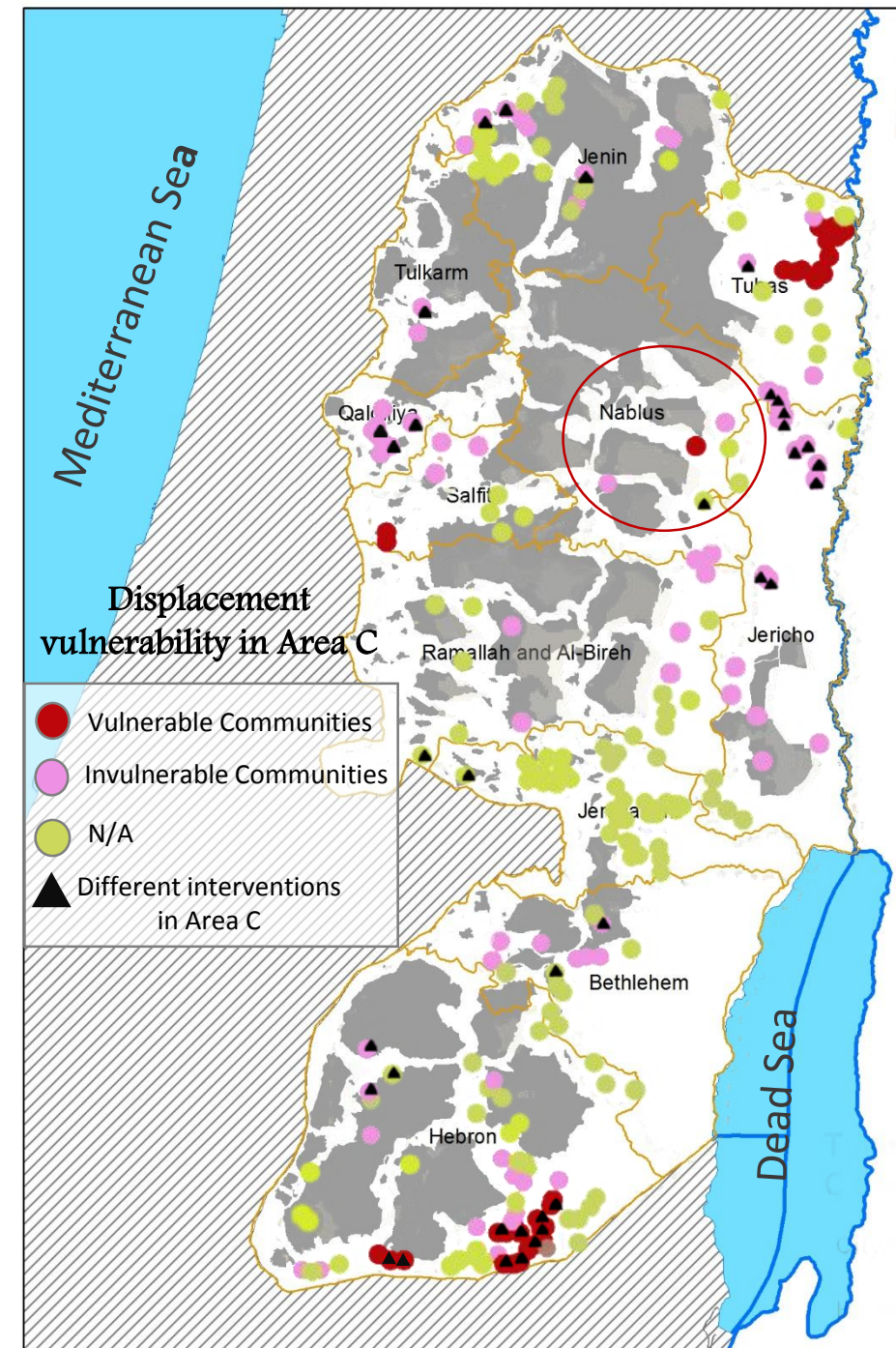
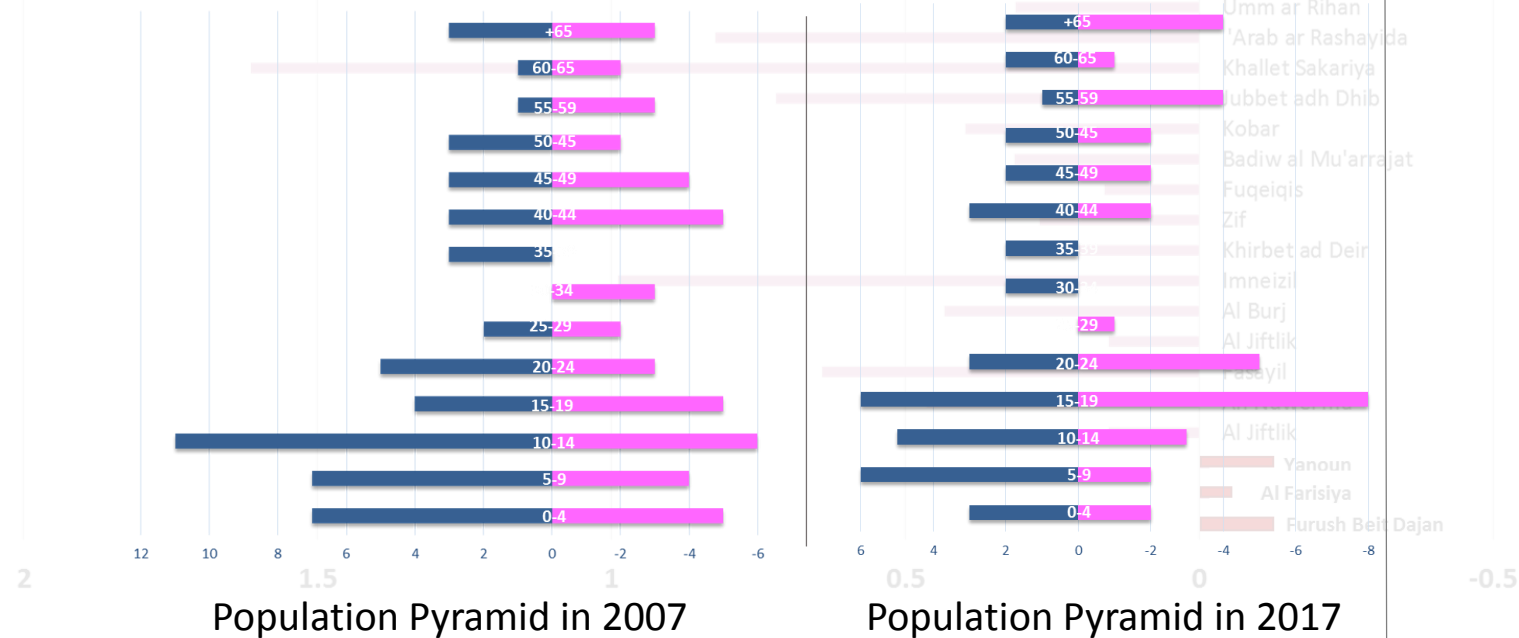
The Average of Population growth 1967-2016



Yanoun Population Growth Rate over years



Population Pyramid in 2007, 2017



Yanoun Population Growth Rate over years



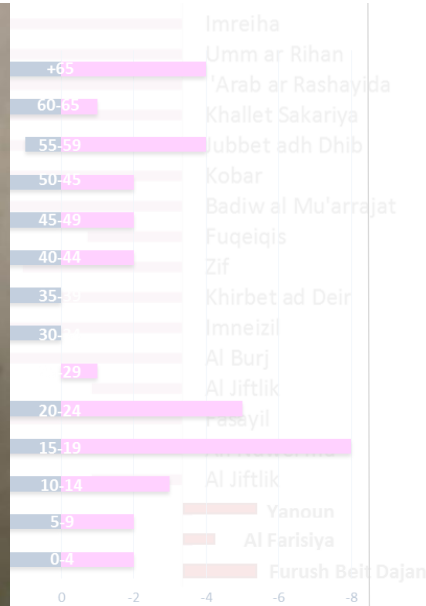
مدرسة بانون الأصغر في فلسطين تحاصر ها 5 بؤر استيطانية



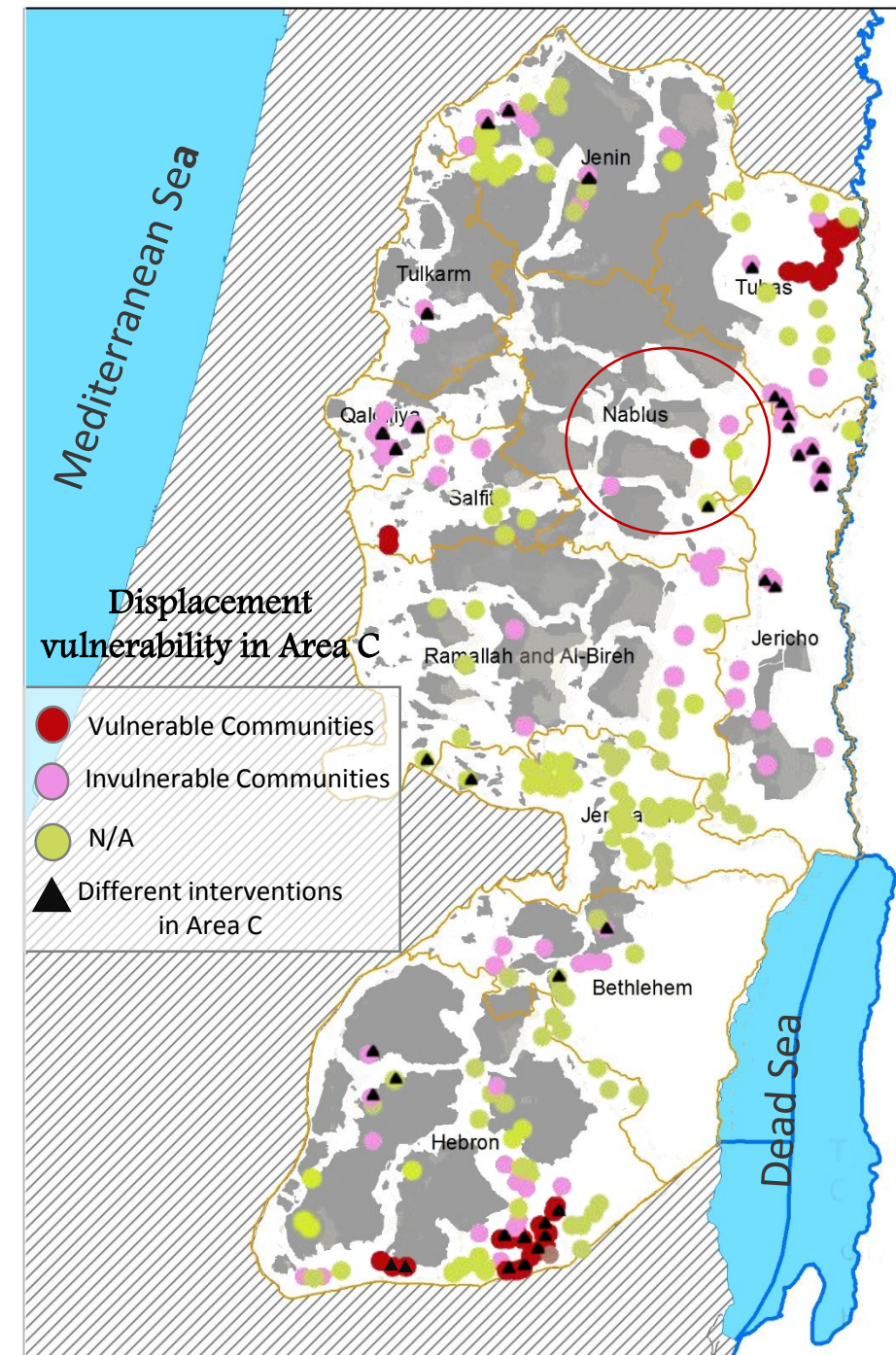
المنكوبون الجدد في "بانون"



I couldn't allow my children to play here....in our courtyard....In Yanoun nothing can be safe anymore!

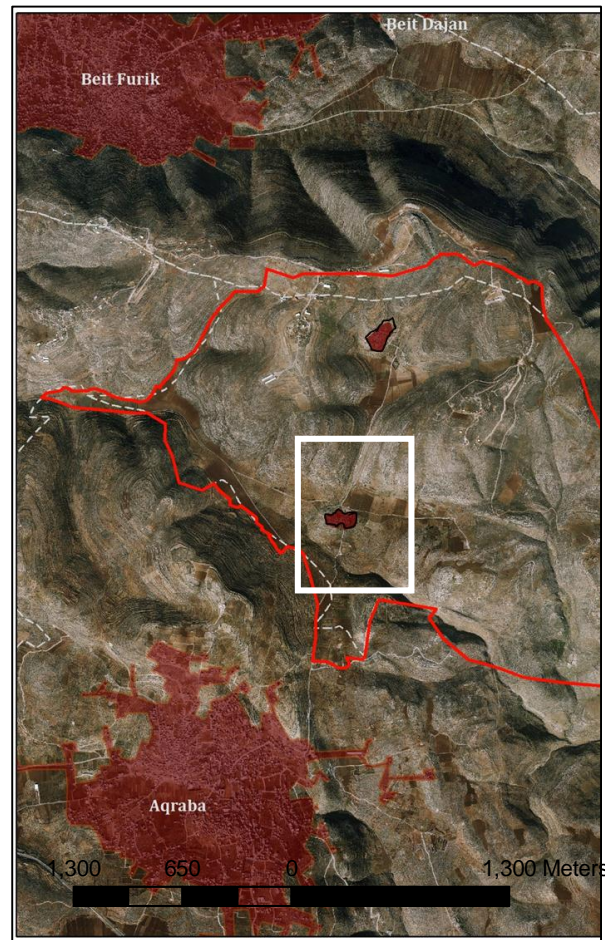


n Pyramid in 2017














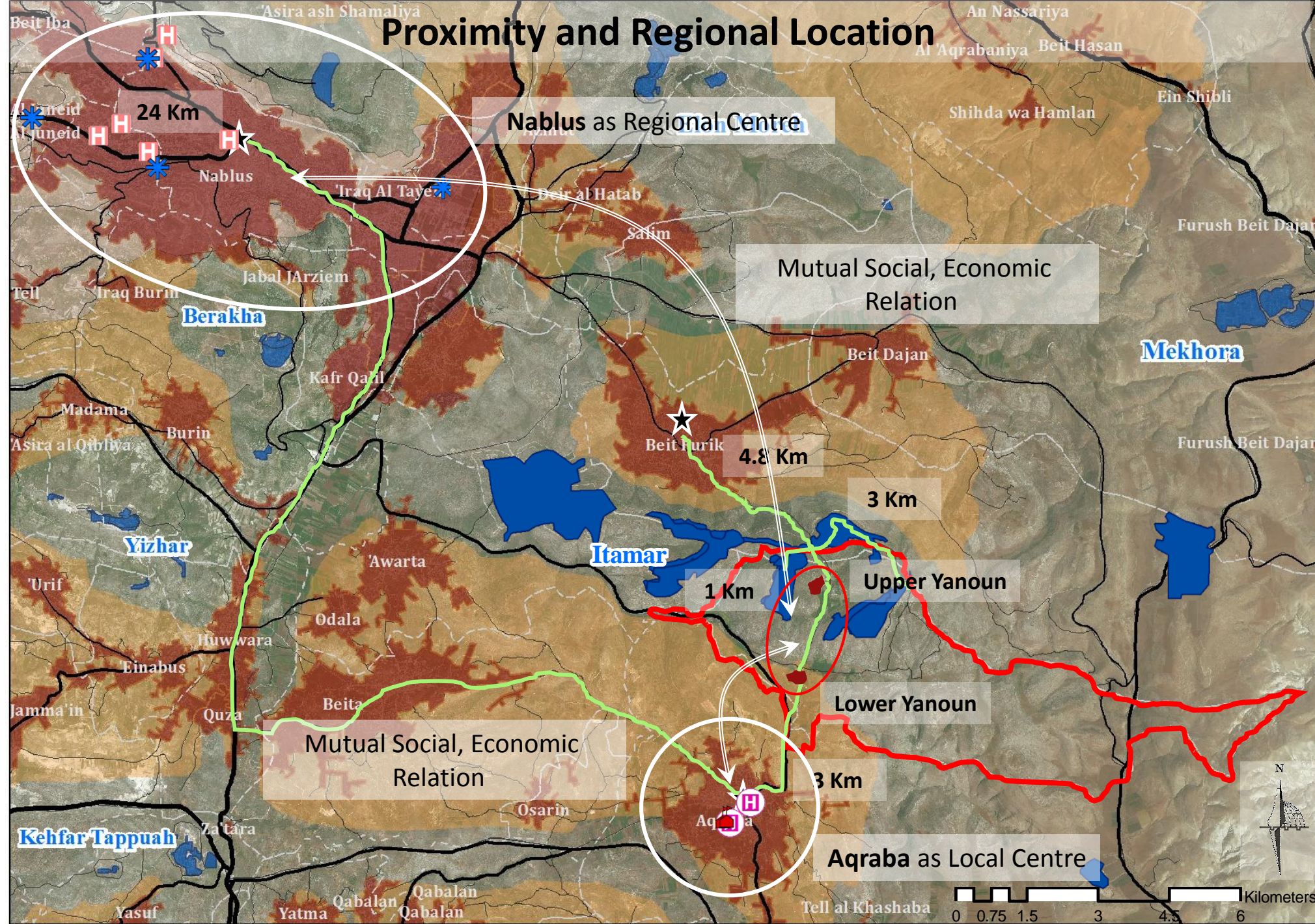
About Yanoun Village



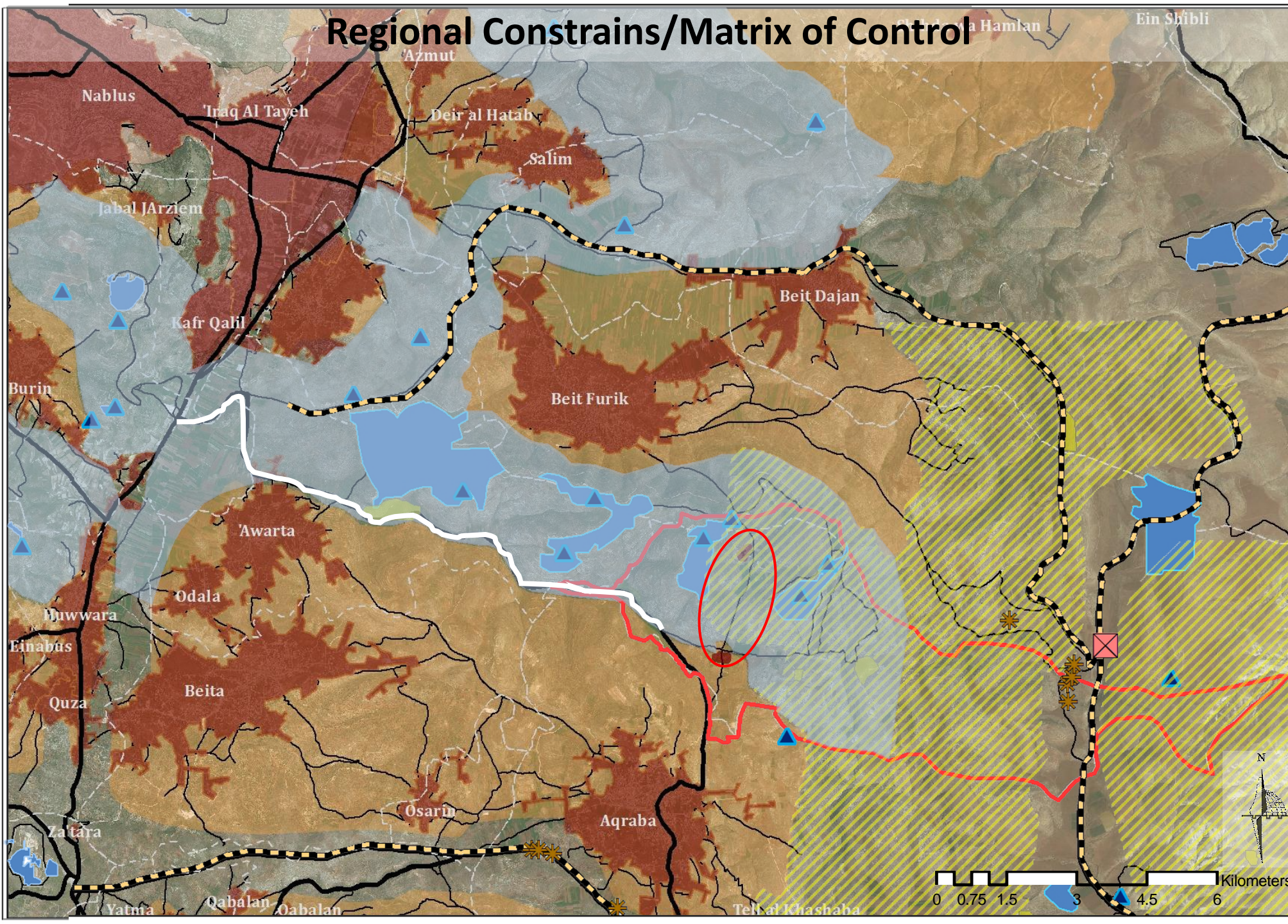
- Yanoun which means (The quite village) In the end of the 19th century around fifty Bosnians, Muslims from Bosnia and Herzegovina, came to Yanoun.
- they were not originally from one family, they adopted a common surname, Bushnak, which attests to their extraction.
- When they moved to Nablus from Yanoun, they leased their land to the residents of Aqraba, who gradually began to leave their own village and settle in the wadi, the plateau and the hill of Yanoun.

A map of the West Bank region, showing the Mediterranean Sea to the west and the Dead Sea to the east. The West Bank is labeled in large black text. Nablus is highlighted in yellow, and a red square indicates its location. The map also shows the borders of Israel and the West Bank. A compass rose is located in the top right corner.

-  Local Road
 Regional Road
 Main Road
 Settlements
 Palestinian Communities
 Area A
 Area B
 Palestinian Communities Administrative Border
 Yanoun Administrative Border



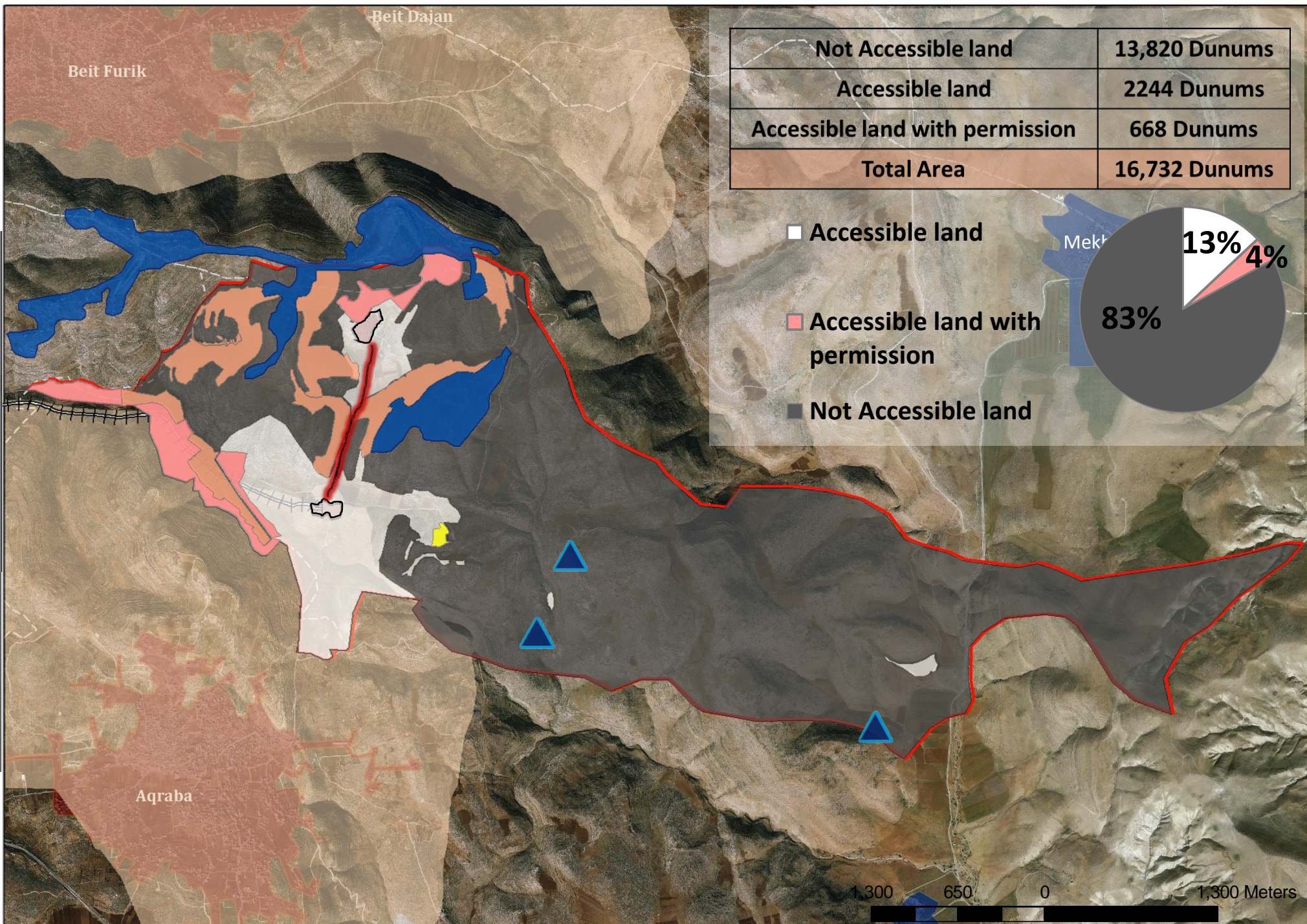
Regional Constrains/Matrix of Control



Najah National University
Urban Planning
Engineering Department
Graduation Project



- ▲ Outposts
- ⊠ Roadblock
- ✱ Earthmound
- Israeli Bypass Road
- Israeli Settlements
- Military Base
- ▨ Closed Military Area
- Itamar Settlements Block



Najah National University
Urban Planning
Engineering Department
Graduation Project
 2016-2017

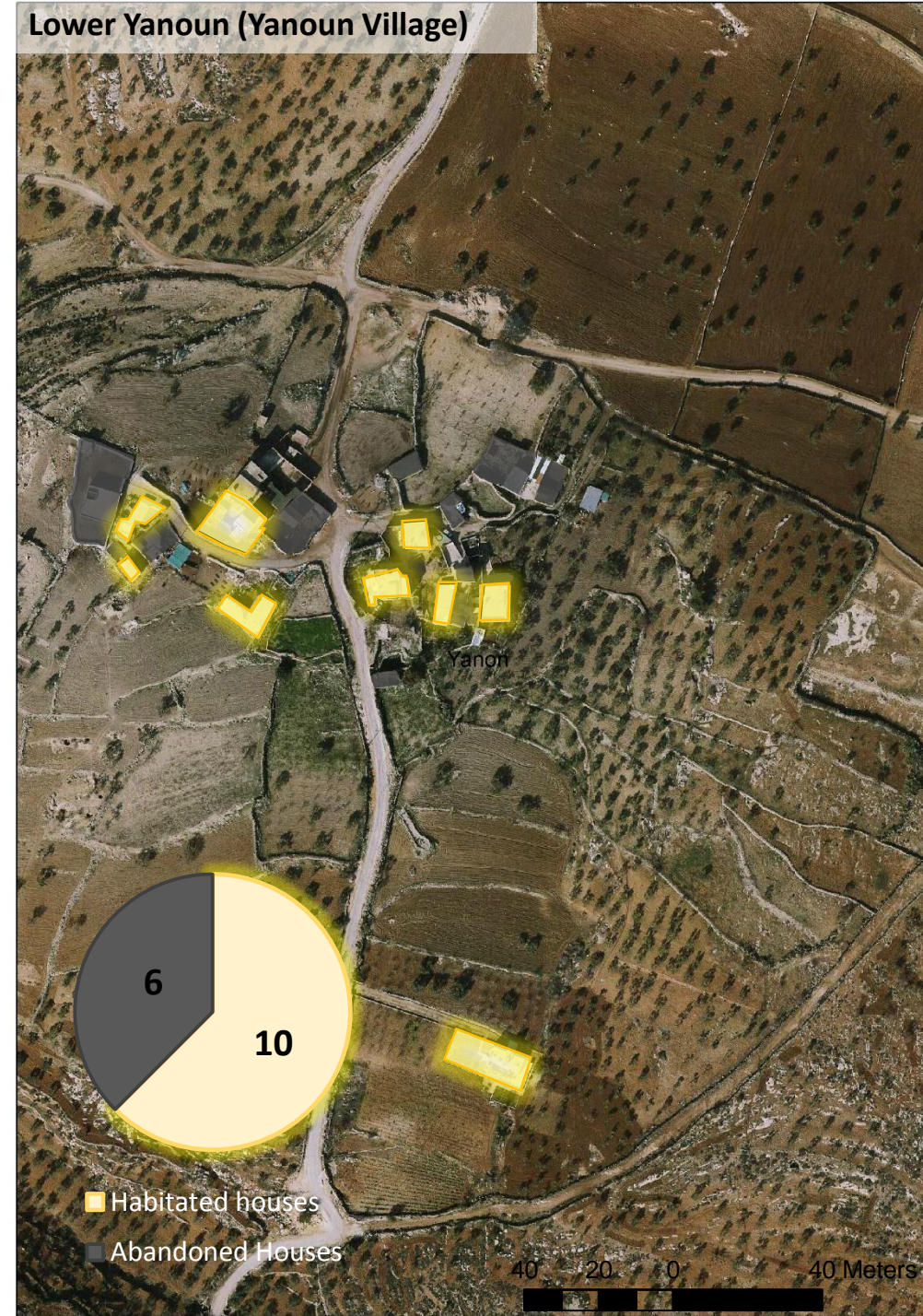
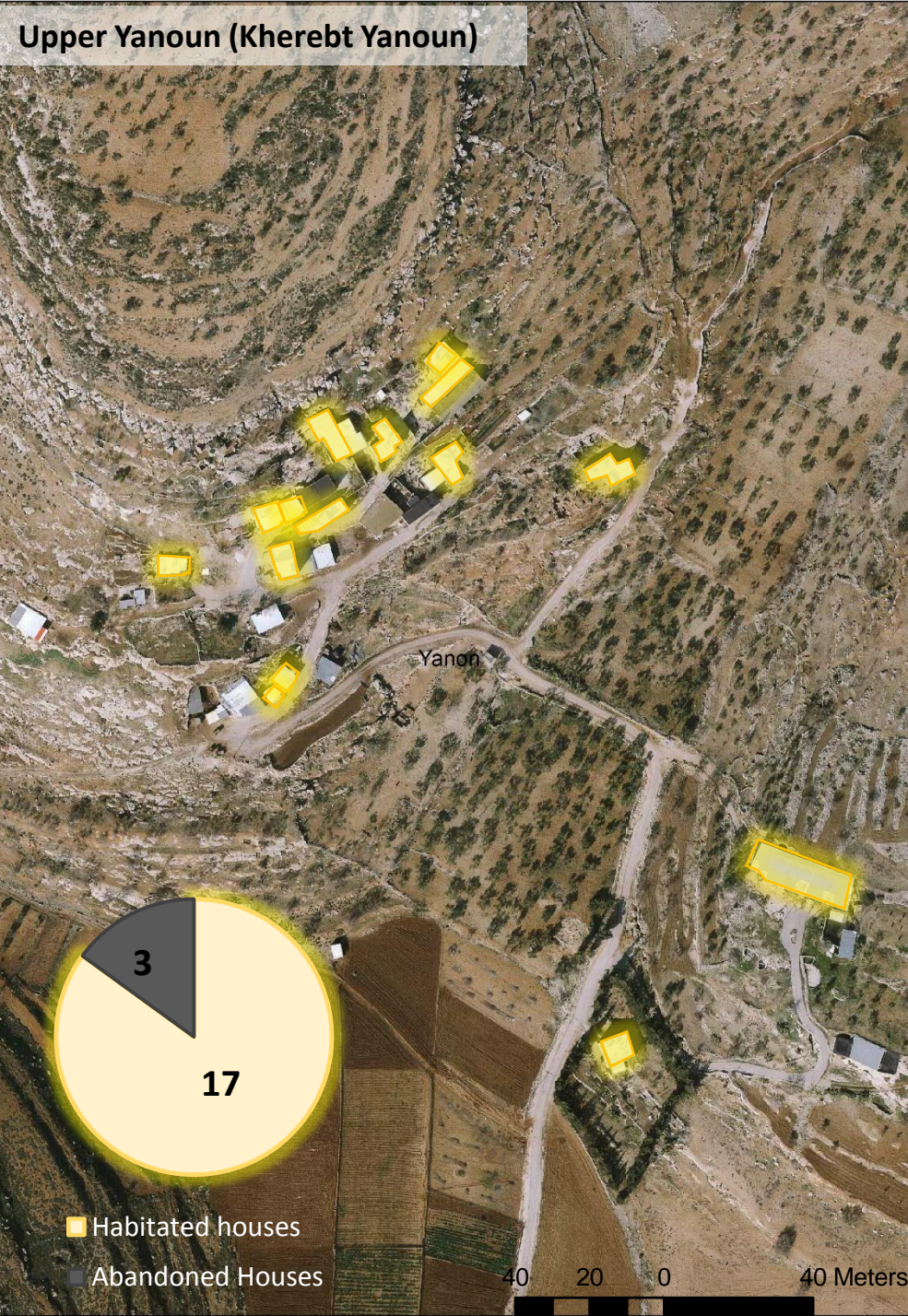


Matrix of control
enforced on Yanoun

- outpost
- Cultivated by Settlers
- Training base
- Settlements
- Palestinian Communities
- Area B
- Blocked street

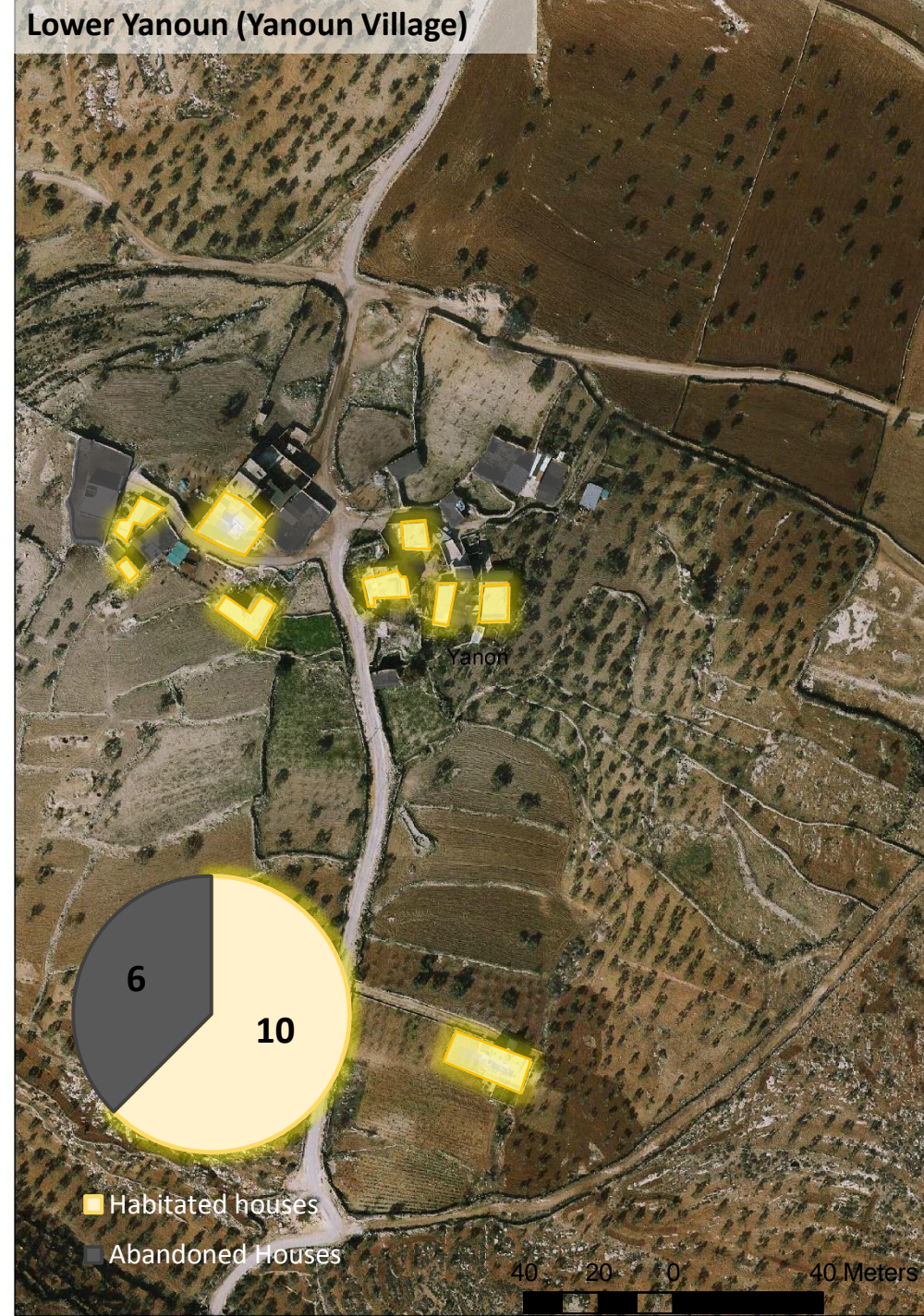
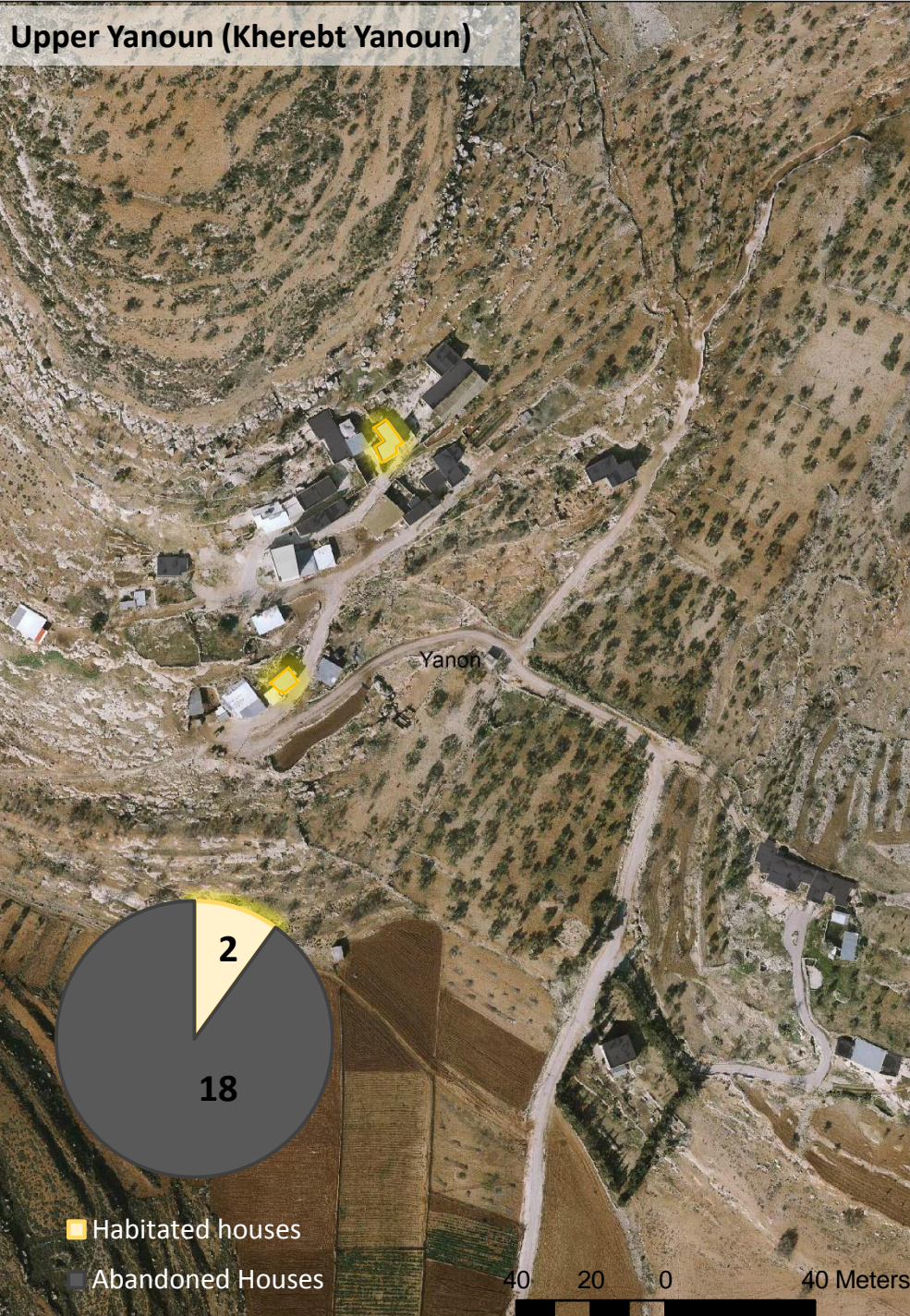
Sequences of matrix

- Accessible land
- Not Accessible land
- Accessible with permission
- Hot spot Area

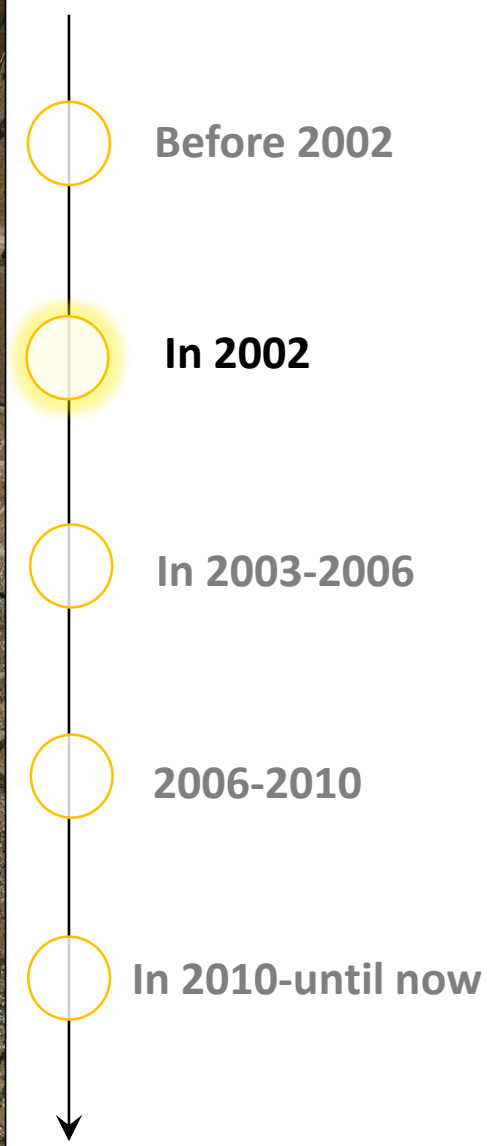


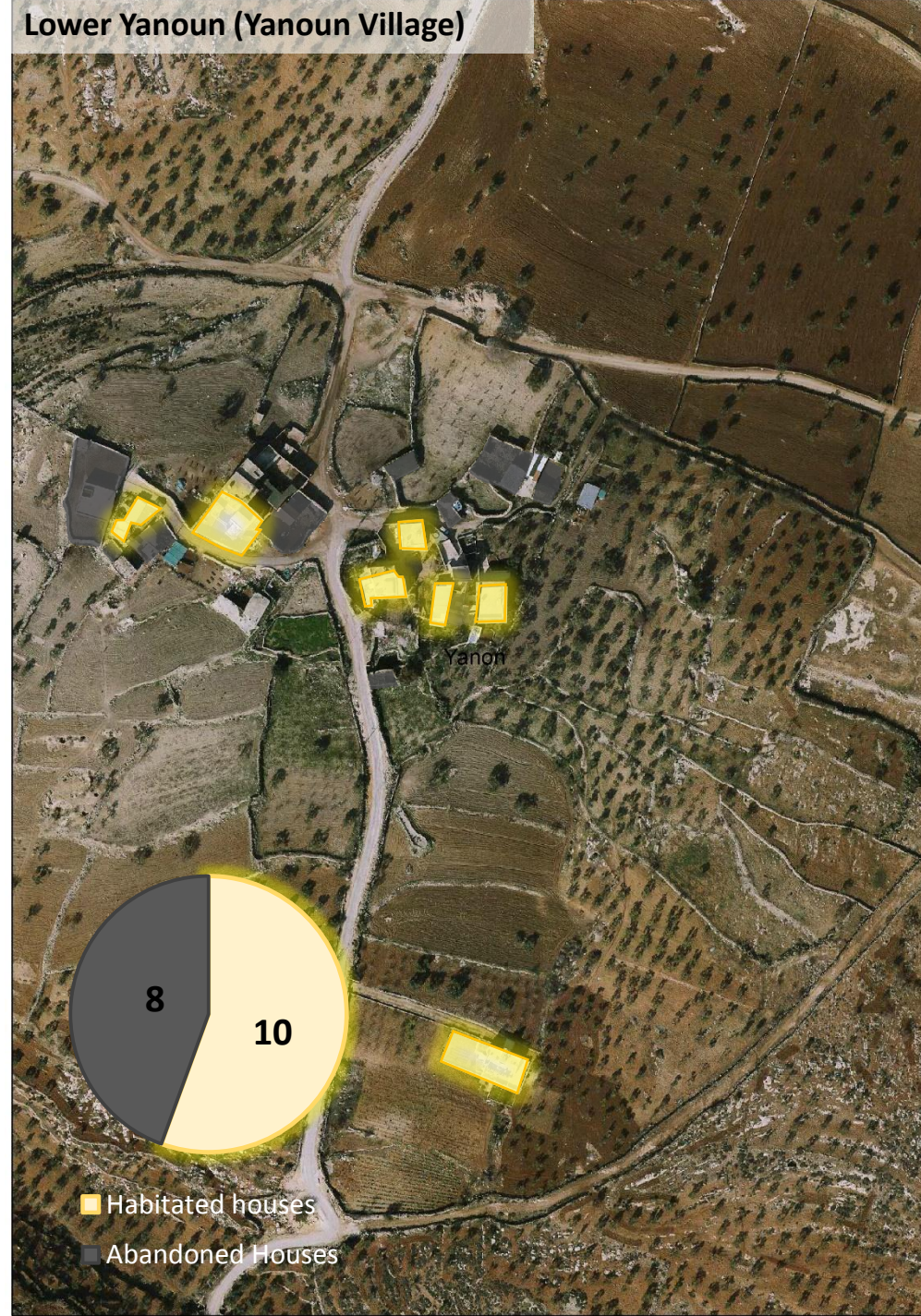
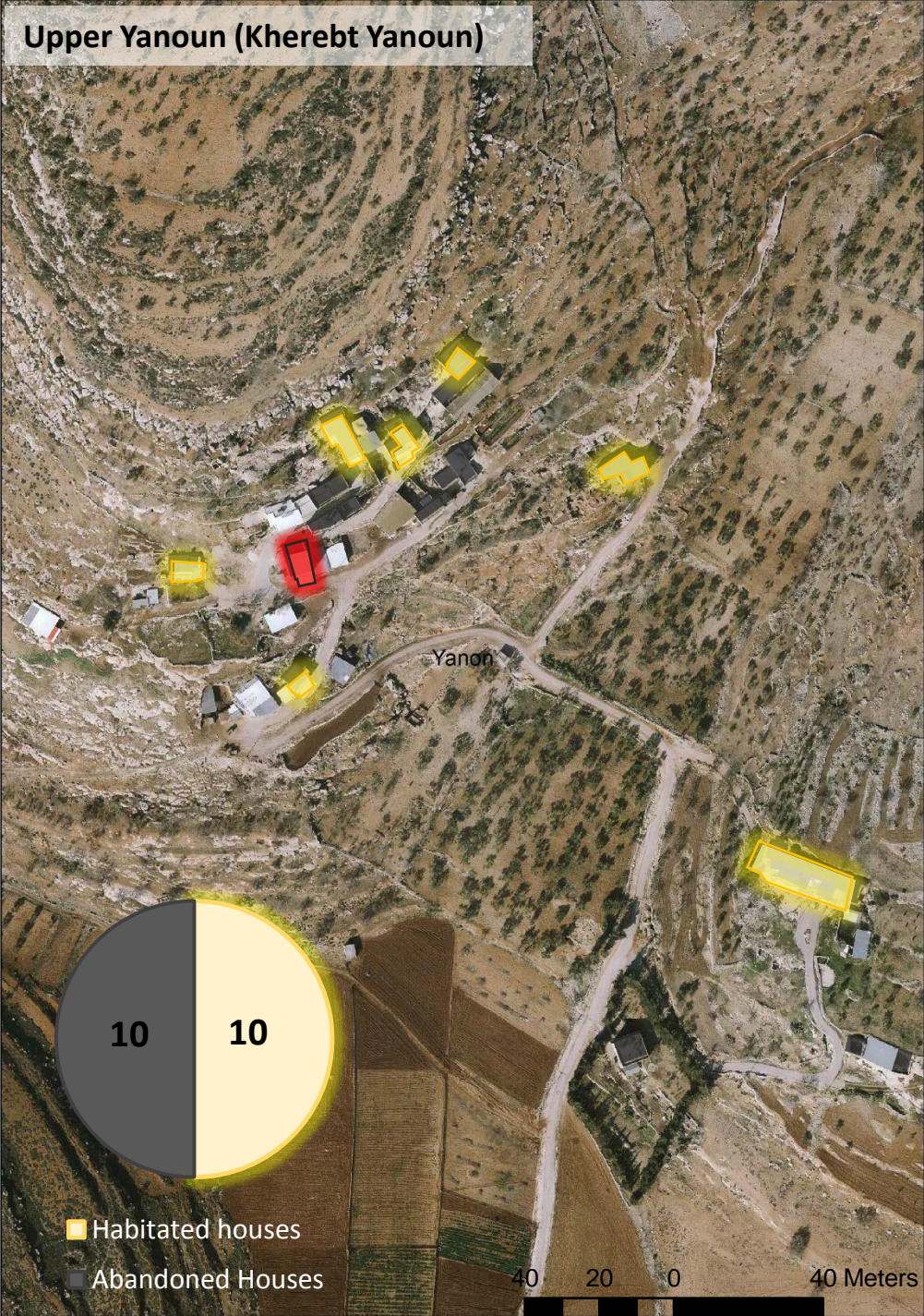
Population transformation



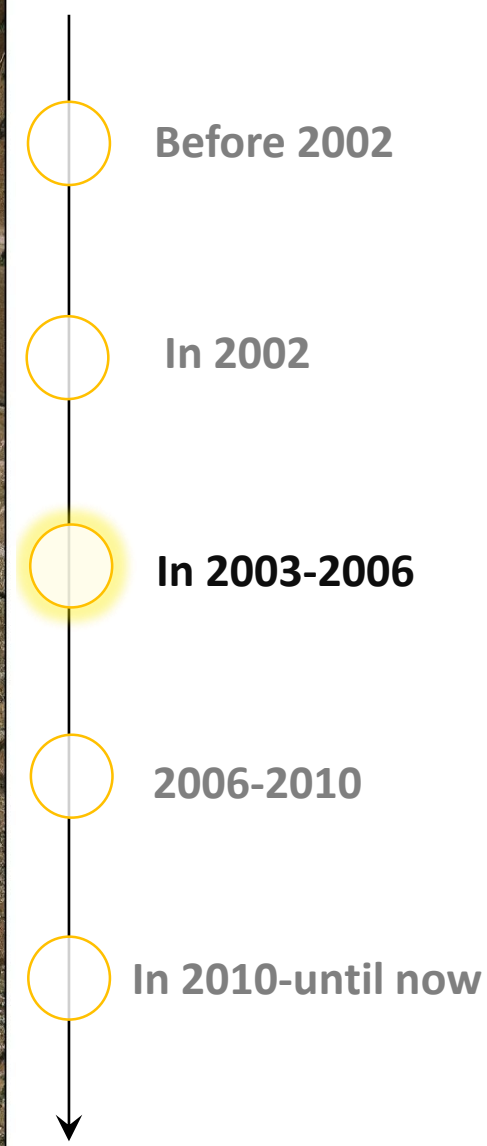


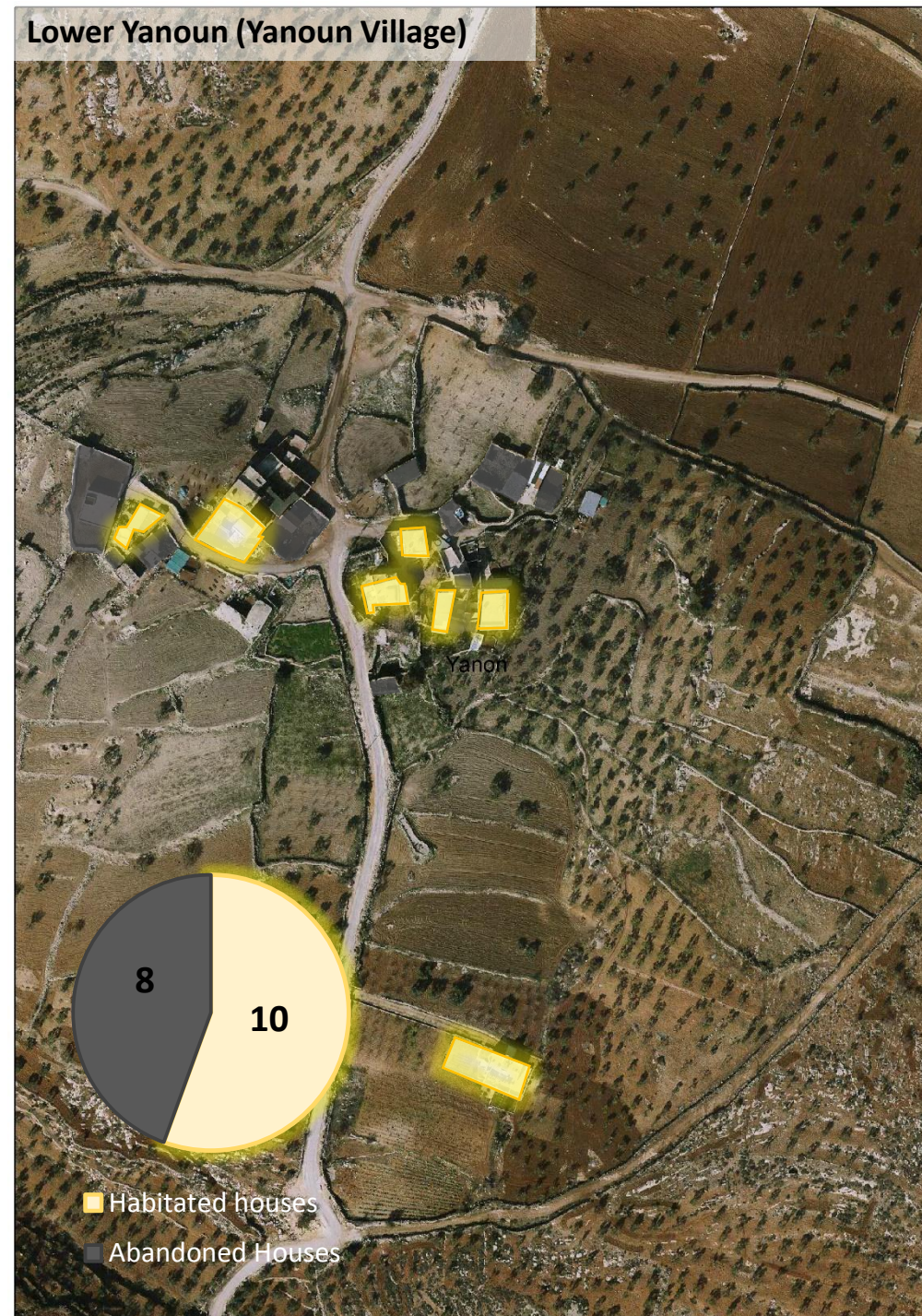
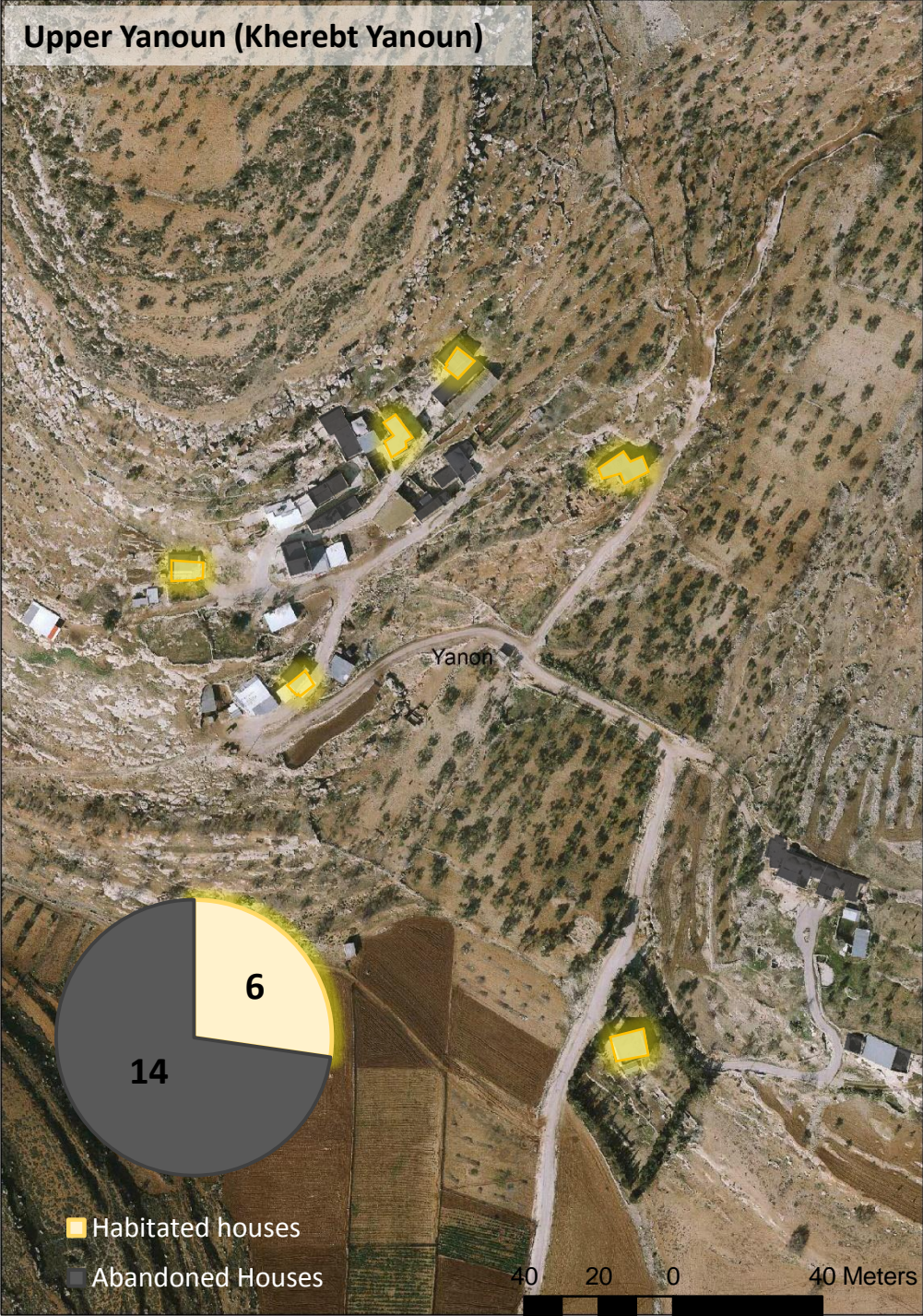
Population transformation



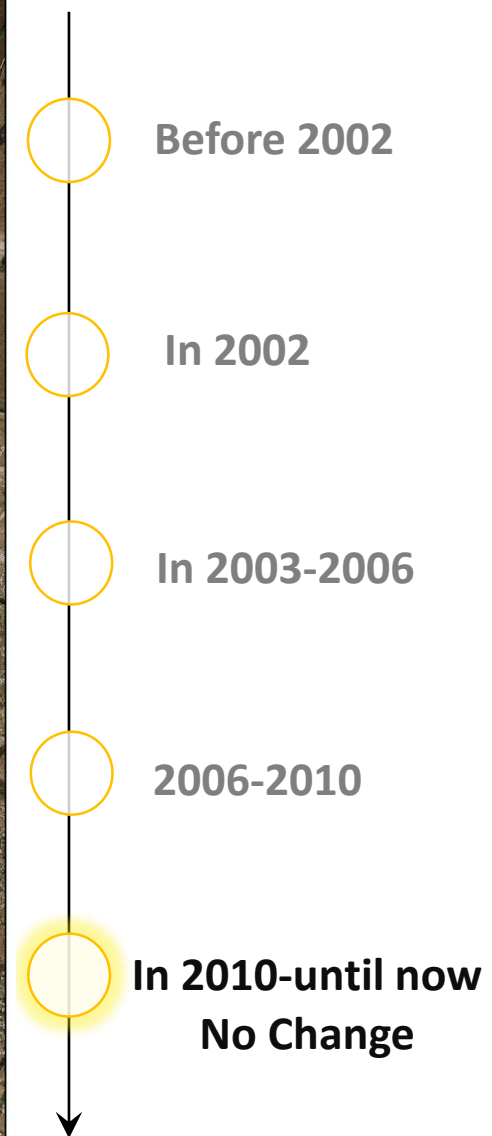


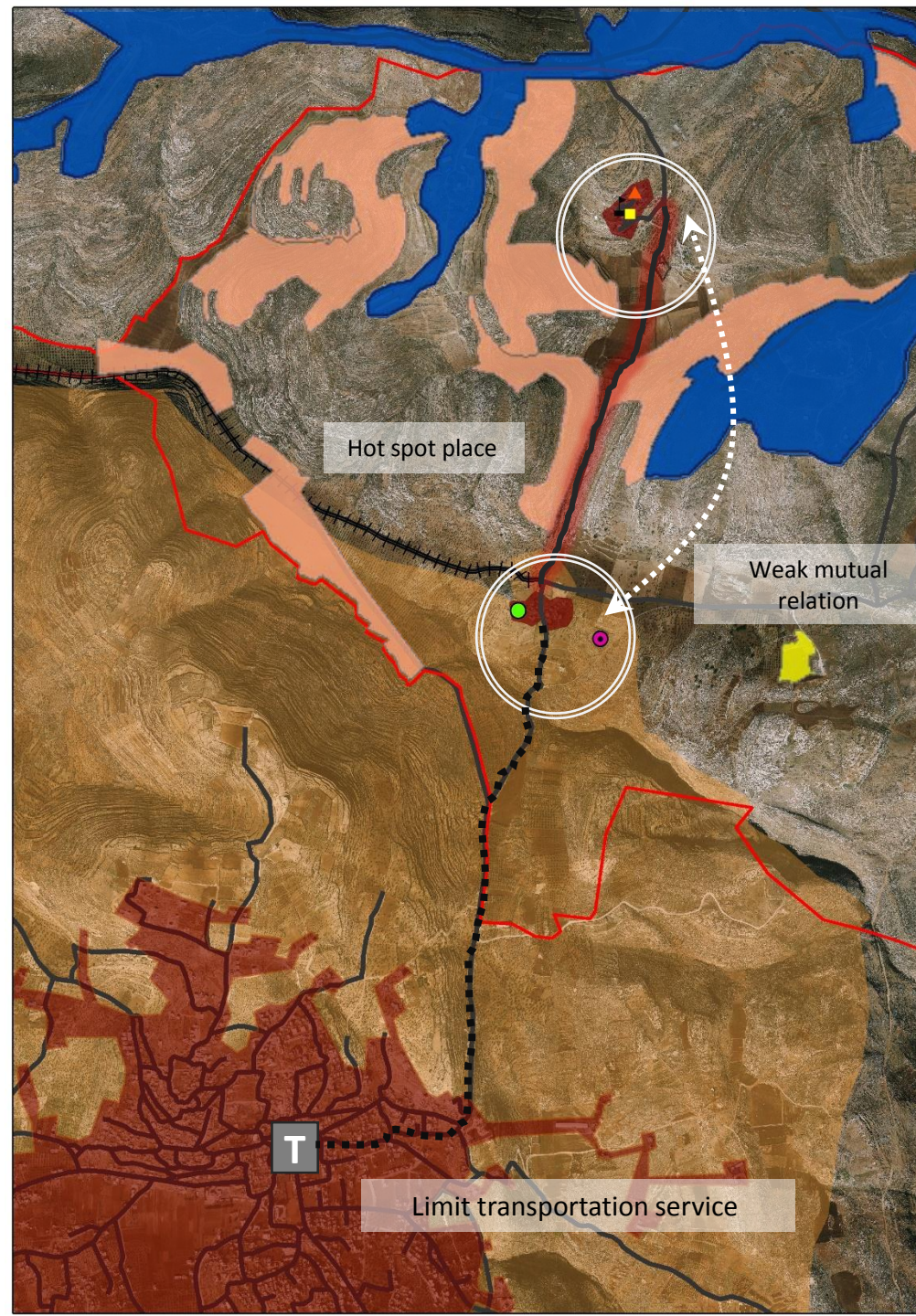
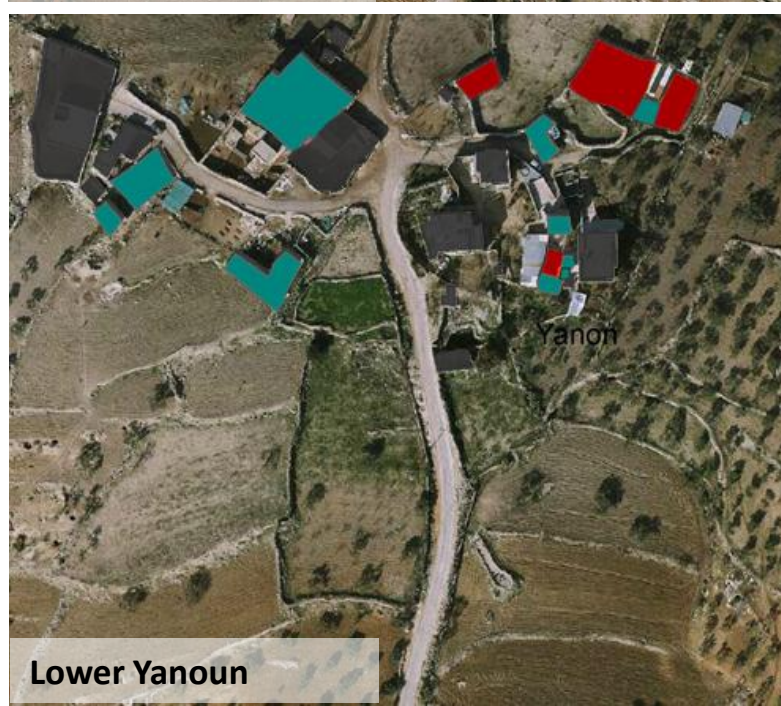
Population transformation





Population transformation





Najah National University
Urban Planning Engineering
Department
Graduation Project

2016-2017



Matrix of Control

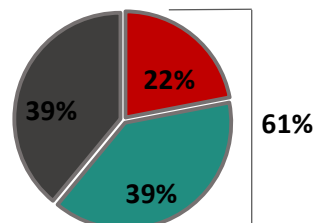
- Cultivated by Settlers
- Training base
- Settlements
- Palestinian Communities
- Area B

Services

- EPPAI House
- Primary School
- Village council
- Mosque
- Park

Occupancy

- Residential
- Abandoned
- Reused Abandoned





Yanoun Park



Mixed Elementary School



Village Council





EPPAI House



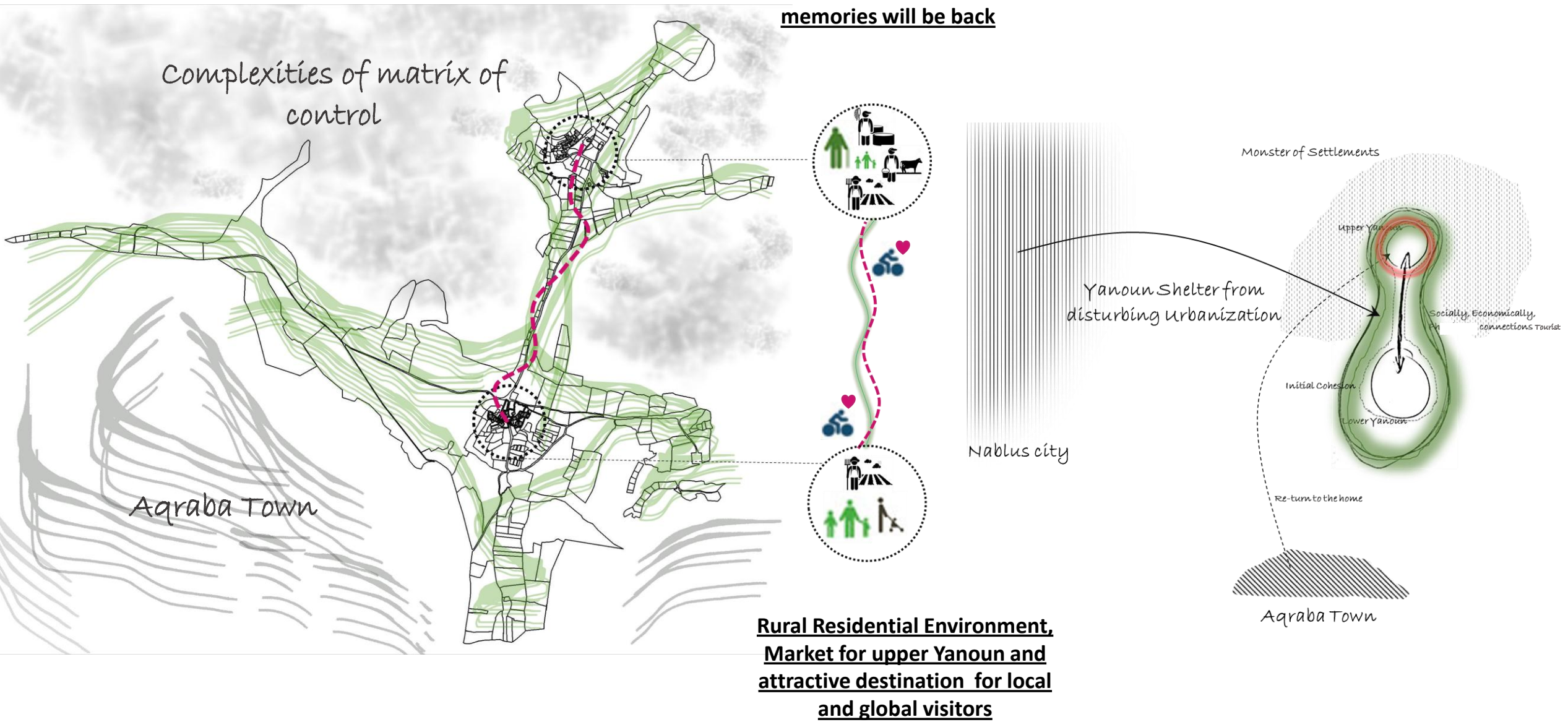
Abandoned Houses



**Roman cemetery &
Al-Nabi Noun
monument**

Vision and Concept

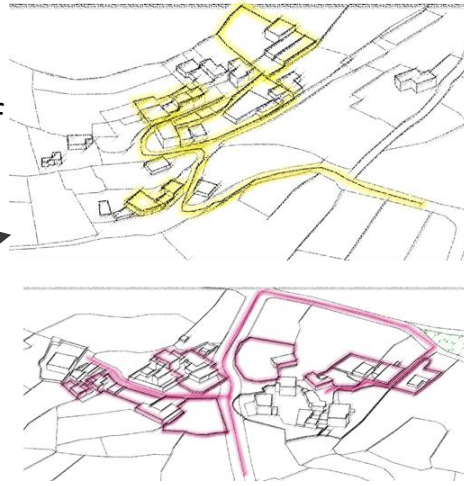
Agricultural Investment Environment
run by past and current Yanoun
residents
The home where all of the old
memories will be back



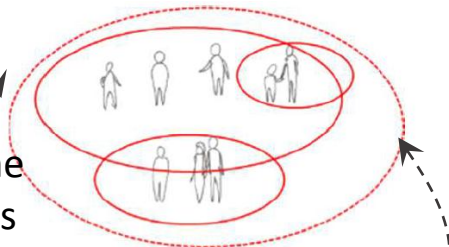


Placemaking Activity

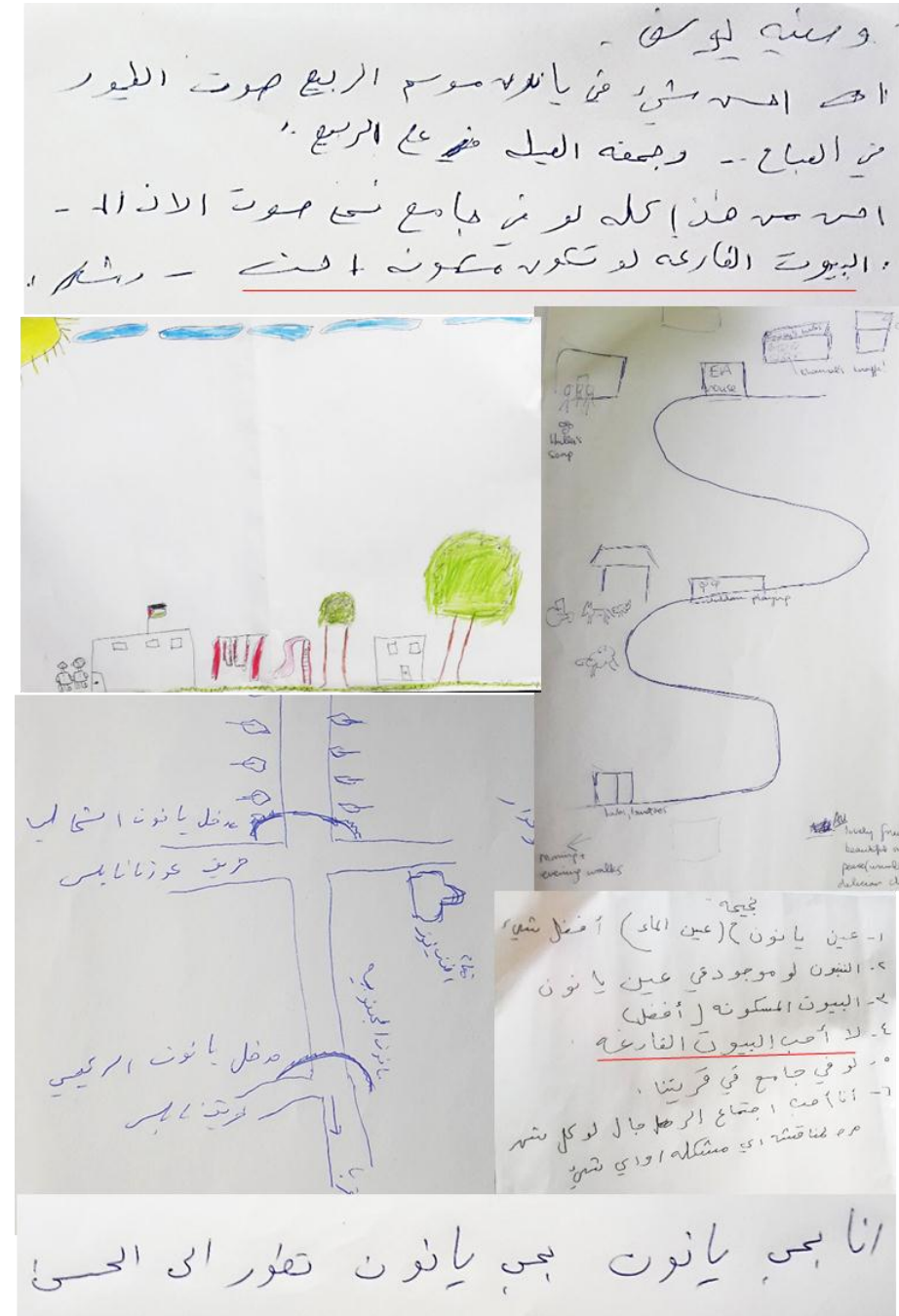
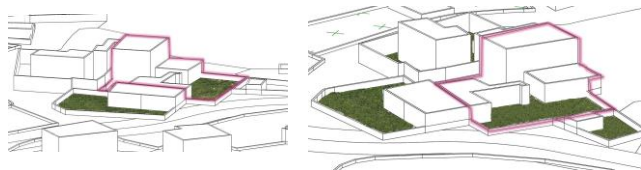
Initial plans of interventions



Meet with the target groups



Final plans and designs





سيرة دلتى الرحمن الرحيم

هدى ا -

يانون منطقة جميلة وحلوة
أنا بحبها و أعيشها كل موقع سياحي
و أكثر المناطق التي أحبها - منطقة
السهل بحبها كثير كثير - و بحب
منظر العمارات التي قبال بيتنا - بحبها جداً
بحبها أخرى منطقة مشاهير على شان
تتطل على بلدتي - بيت غوريك



نجية

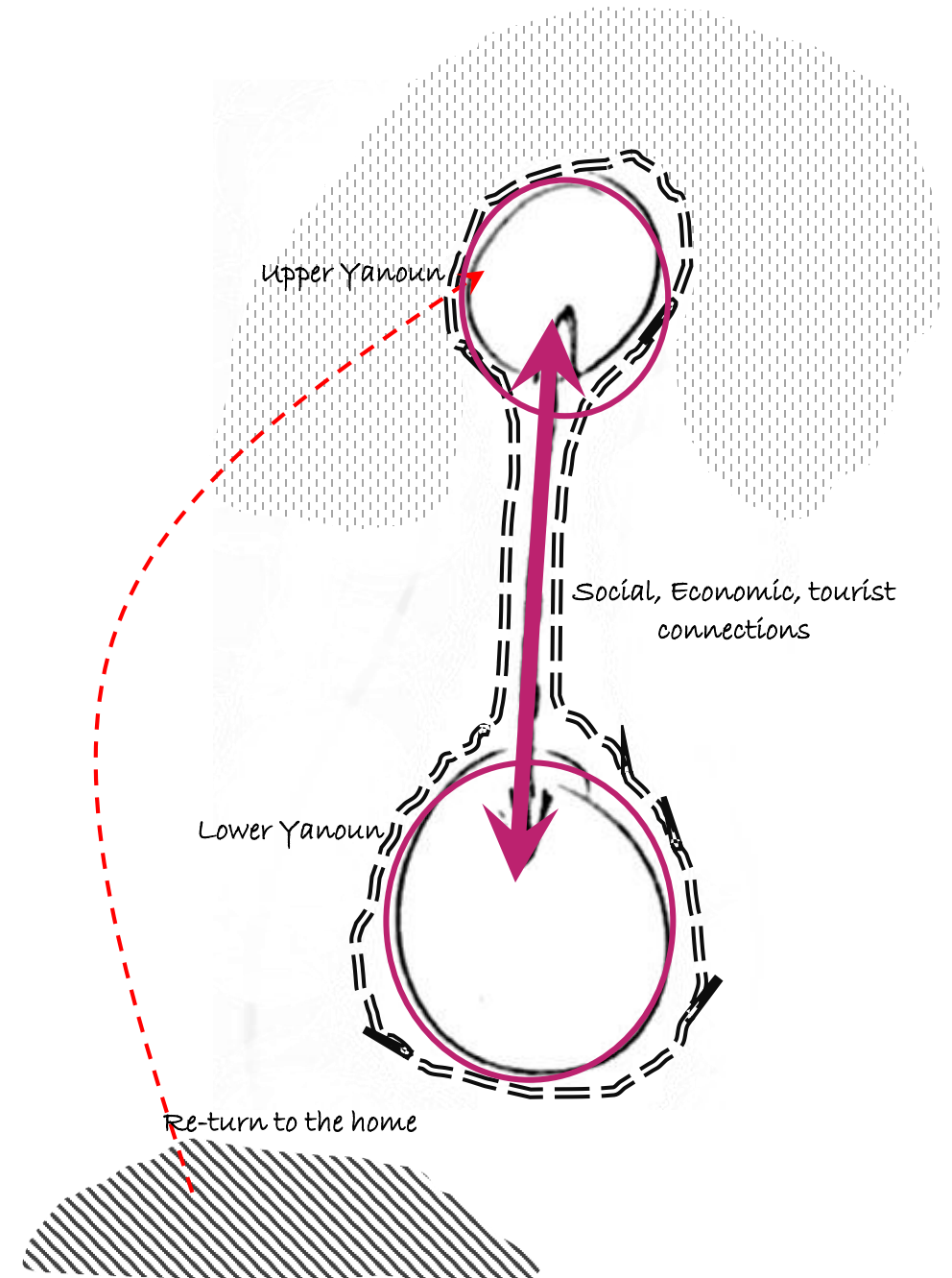
١- عين يا نون (عين الماء) أفضل شيء
٢- النون لو موجود في عين يا نون
٣- البيوت المسكونة [أفضل]
٤- لا أحب البيوت الفارغة
٥- لو في جامع في قريننا
٦- أنا أحب اجتماع الرجال لو كل شهر
مرة لمناقشة أي مشكلة أو أي شيء

Methodology of Development

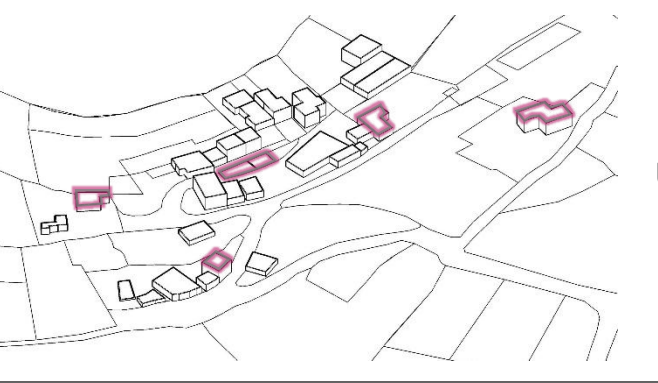
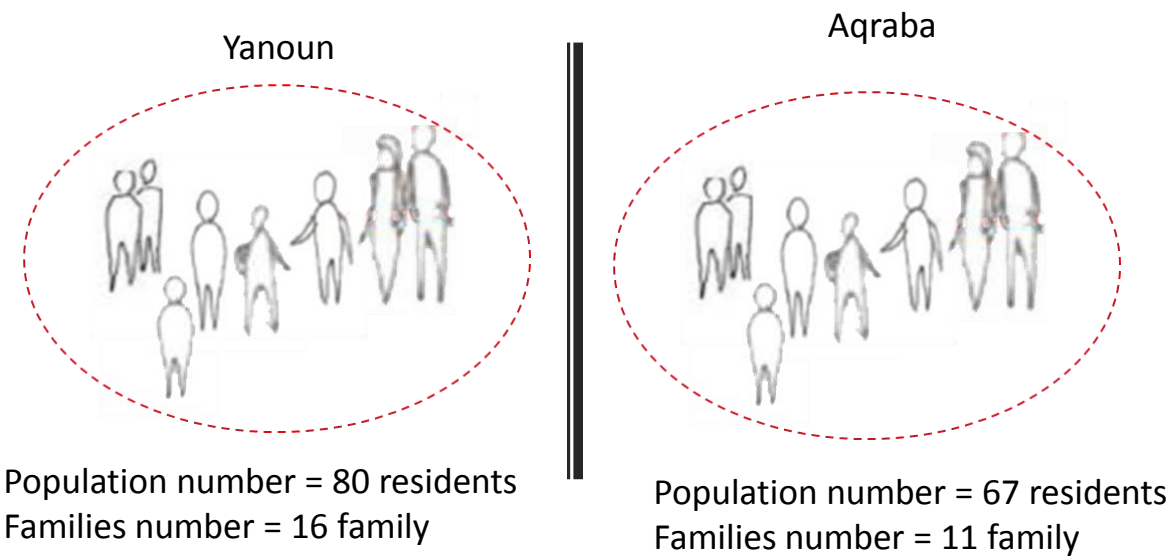
Phase #1 2017-2025

- ✓ Rehouse all of the Yanoun people who are living in Aqraba
- ✓ Upgrade the social, economic, tourist situation and enhance the cohesion between two parts of Yanoun

Monster of Settlements



Yanoun suffers from matrix of control
In 2017

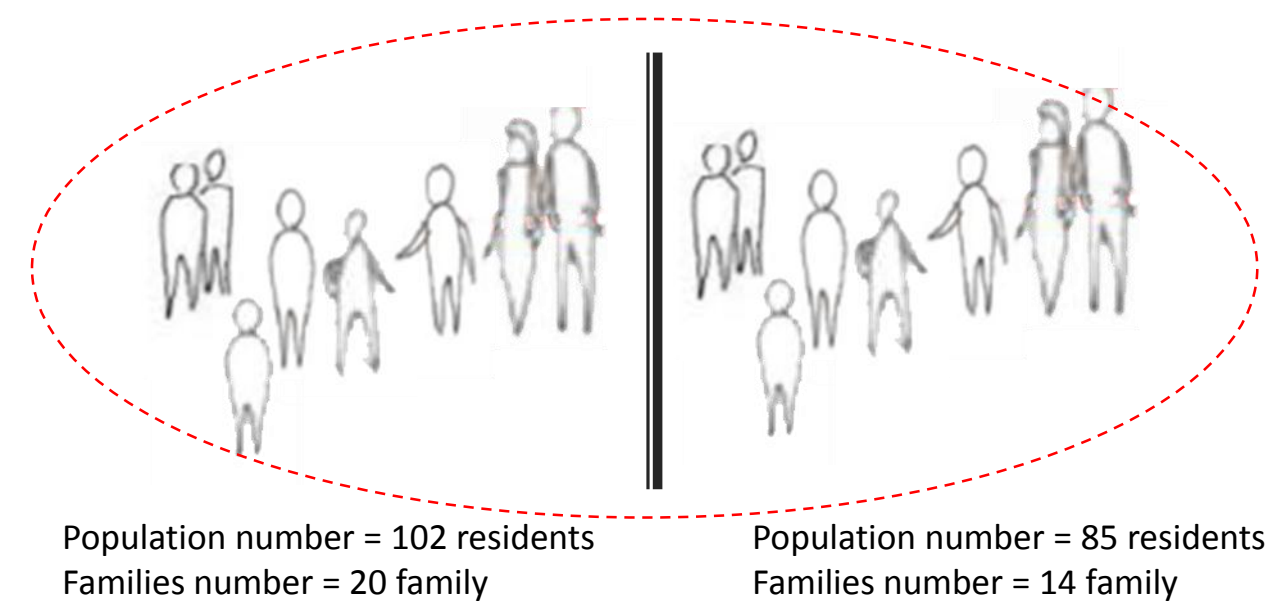


Upper Yanoun



Lower Yanoun

Yanoun dismantled matrix of control
In 2025



By 2025 Yanoun Village will be the home of 187 residents (34 family) with an increasing of 18 family

Methodology of Development

**Phase #2
2026-2033**

✓ **Provide calm rural
residential area for
different people
out of Yanoun**

Nablus city

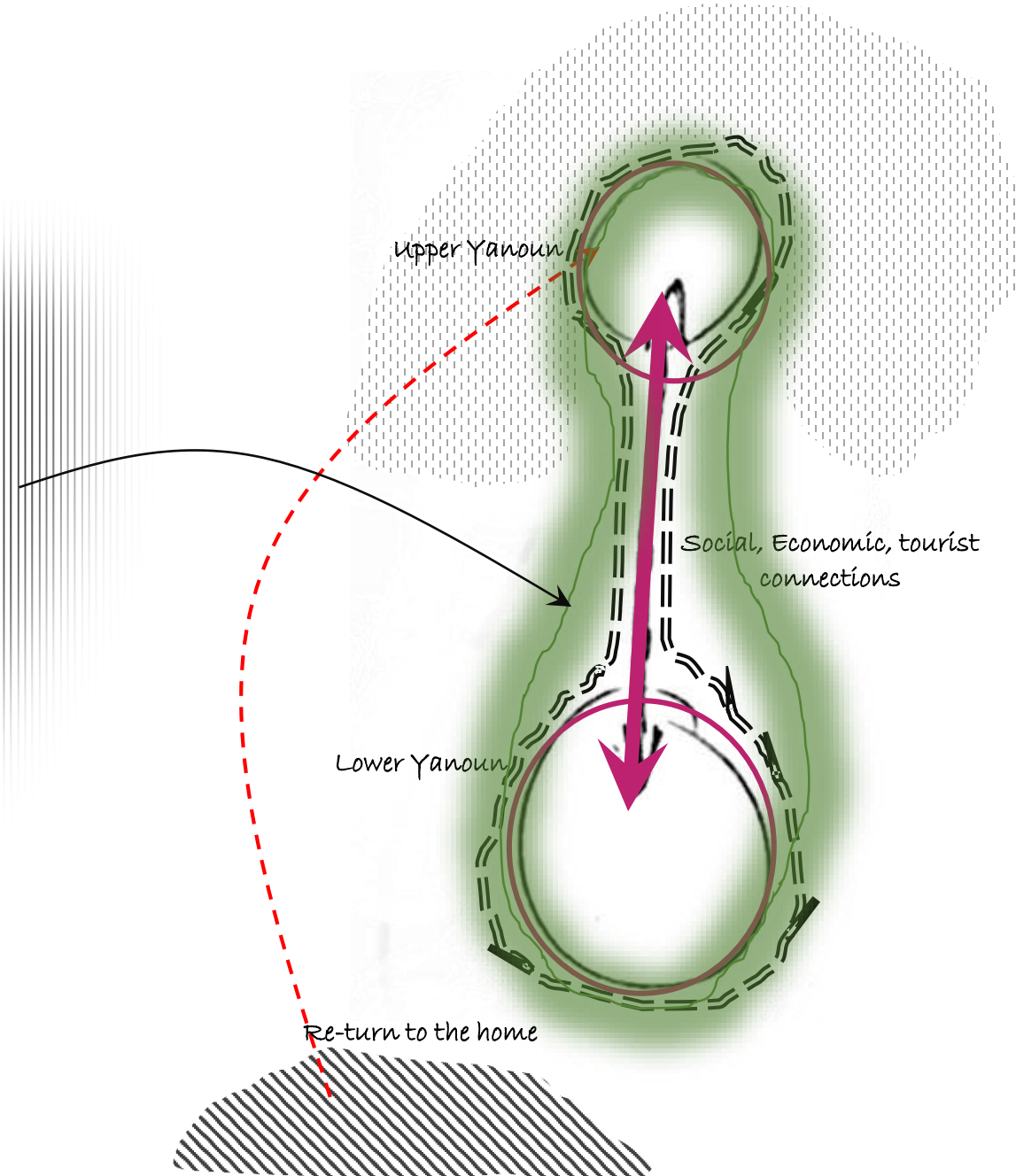
Monster of Settlements

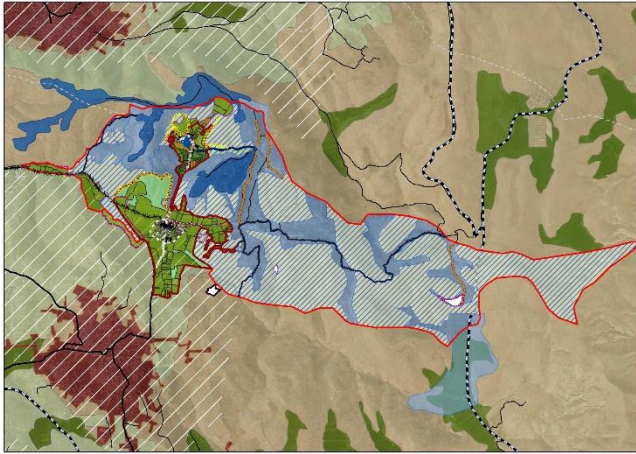
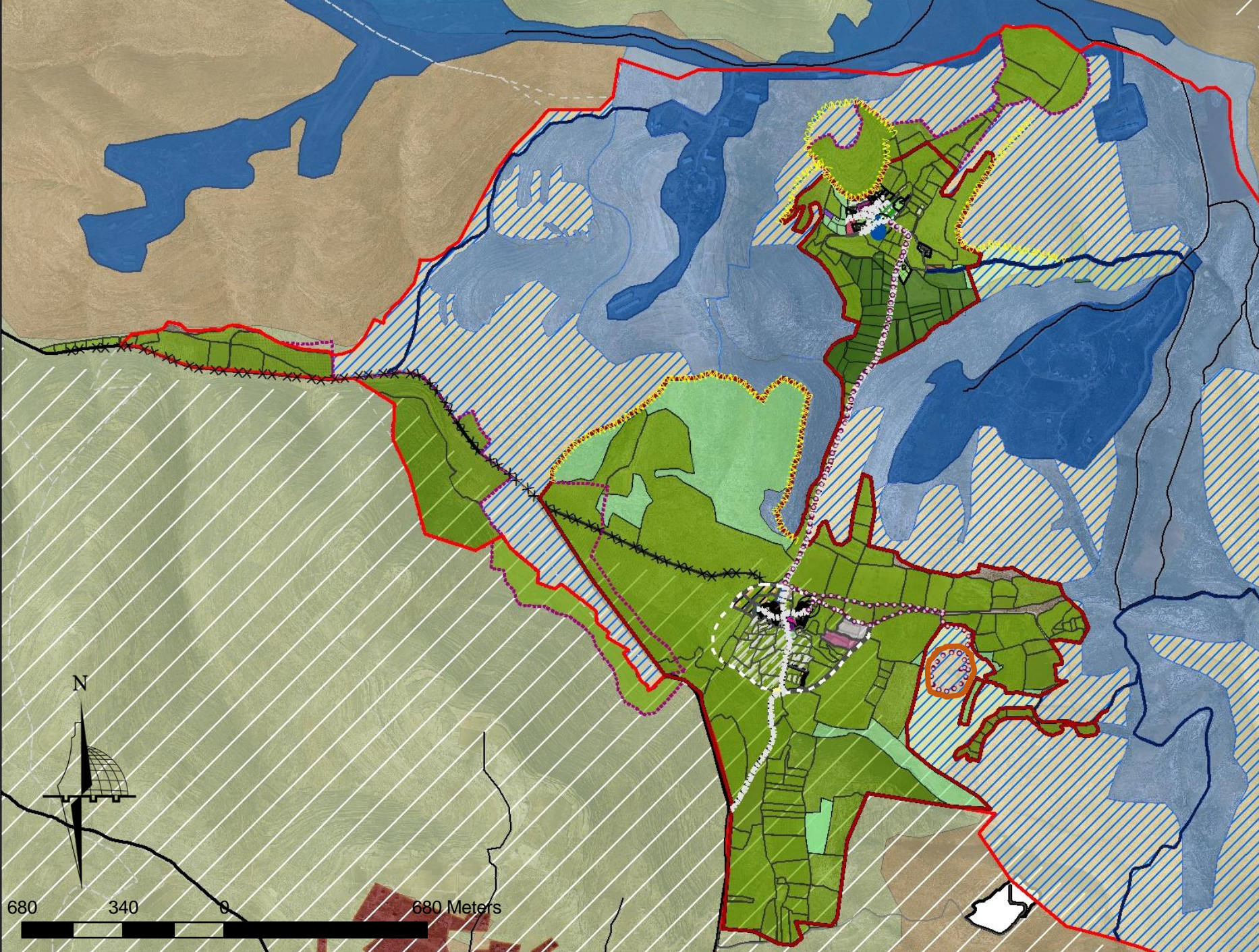
Upper Yanoun

Social, Economic, tourist
connections

Lower Yanoun

Re-turn to the home





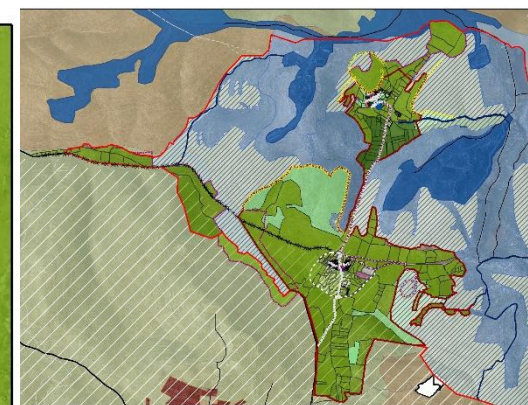
Yanoun matrix of control

- Yanoun frontier
- Accessible Land
- settlers track
- Blocked Street
- Yanoun administrative border
- Accessible Land with permission
- Prohibited area
- Settlements
- Cultivated land by settlers

Area B

Development interventions

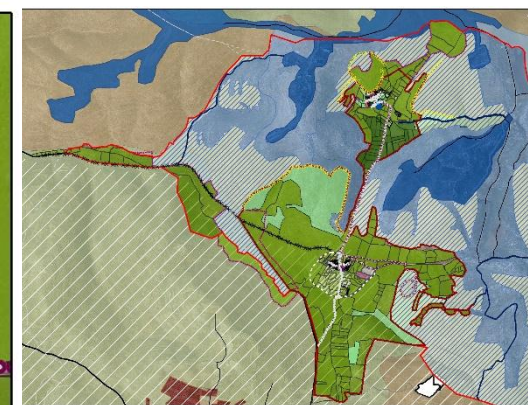
- Tourist Path
- Rehabilitation streets
- Land Reclamation
- Yanoun field
- Olive trees
- Moderate Agricultural land value
- Low Agricultural land value
- Aqraba landfill
- Aqraba town
- Palestinian Communities administrative border



Development interventions

-  Bicycle parking
-  Water spring
-  Tourist Path
-  agri_route
-  Rehabilitation streets
-  parking
-  Shops
-  Dead-end street
-  Terraces
-  Olive Press
-  Agricultural, food production
-  Agricultural school
-  Land of agricultural school
-  Private gardens
-  Rehousing Initiative
-  Greenhouses
-  EAPPI Centre
-  Elementary school
-  Village Council and Youth Centre
-  Place for Pray
-  Cemetery
-  Land reclamation
-  Brix
- Houses





Development interventions

- Bicycle parking
- Tourist Path
- agri_route
- Rehabilitation streets
- parking
- Shops
- Dead-end street
- Private gardens
- Greenhouses
- Land reclamation
- Brix
- Houses
- Information centre
- Traditional olive press
- Private barn
- Rest area
- Commercial use
- Hosh of Ajour people
- Residential reuse
- Major Mosque
- Water Reservoir
- Solar Cells Projects
- Hosh of Upper Yanoun people
- Rural Housing Model
- Entrance development
- Rural housing project
- Future development projects
- Streets rehabilitation in phase 2
- Development border until 2033



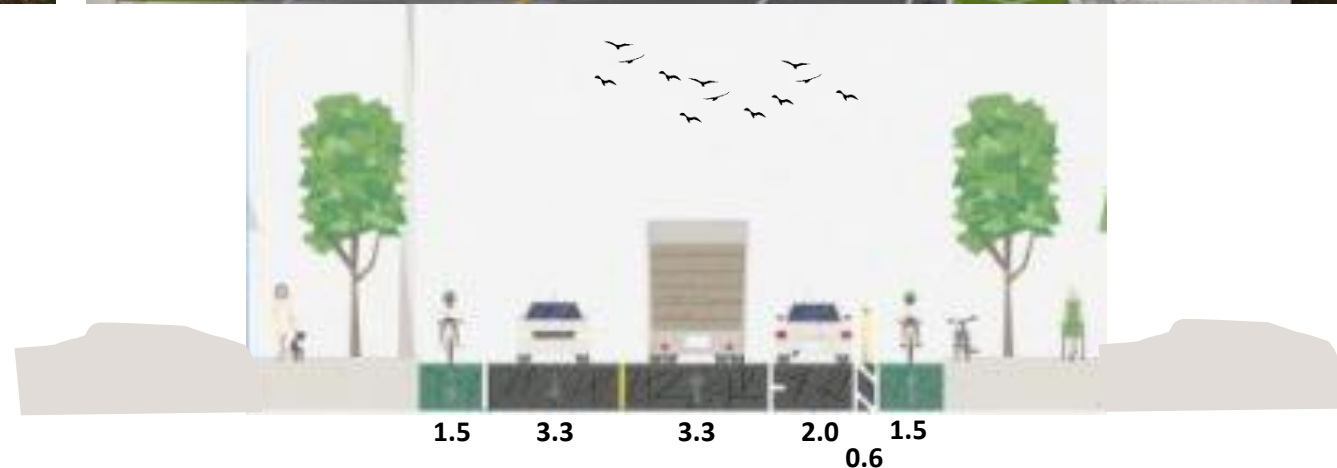


**Impacts of projects and
expectations**

Livable attractive Yanoun



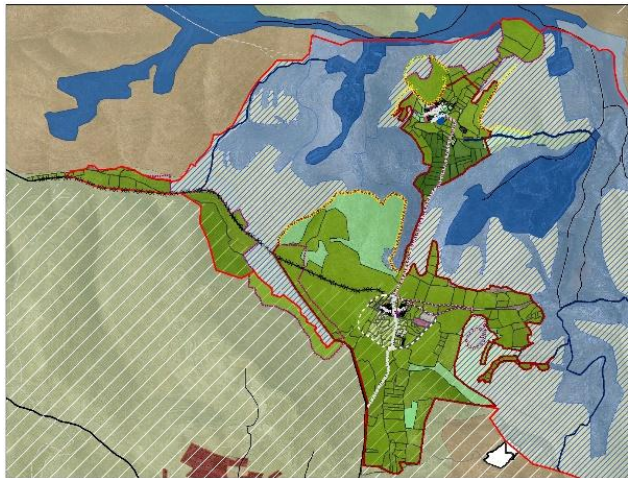
The connecting street between two parts of Yanoun



Tourist path, cycle lane



Archeological area, setting area



Yanoun park on the Yanoun frontier



Private gardens



Conclusion and Recommendations

- Put all of these simple suggestions in the action and start make a difference.
- Direct and Invest the energy ,ability of our youths and their motivations in the voluntary activities toward placemaking initiatives.
- There are many marginalized communities in Area C have the same case of Yanoun, we should



Thank you...