

A stylized illustration featuring a large red sign with a white border on the left that reads "Smart School Bus" in white text. To the right of the sign is a yellow school bus with black wheels and windows, parked on a grey road. The background consists of green trees and a light blue sky with white clouds.

Smart School Bus




Table of contents

01

Problem
statement

02

Solution
statement

03

Check the identity
of the child

04

GPS Tracking

05

Sensors and
Monitoring

06

Constraints
and Limitation

Why smart school bus?

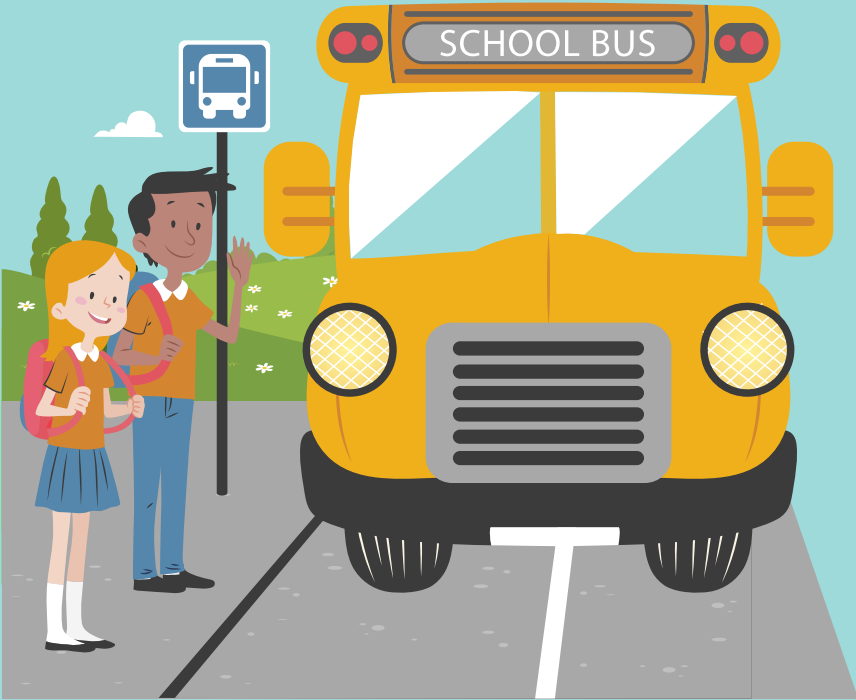
Problem Statement



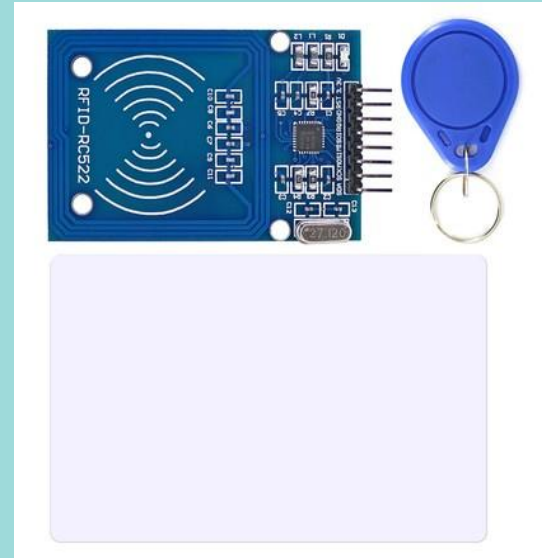


Our smart bus is “The solution”.

Check the identity of the child



Using RFID

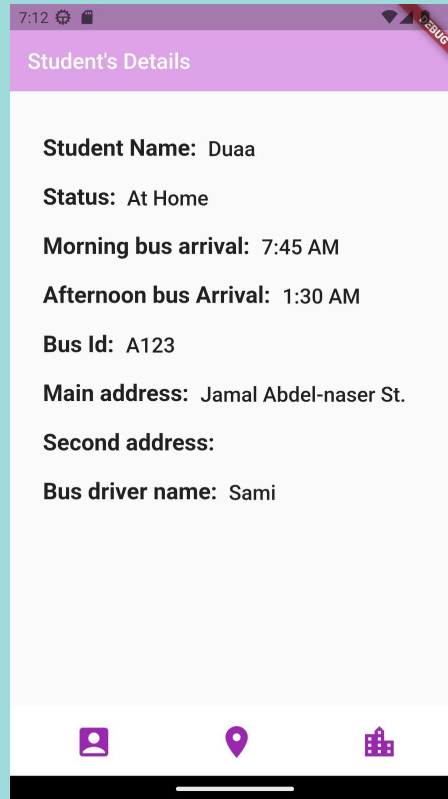
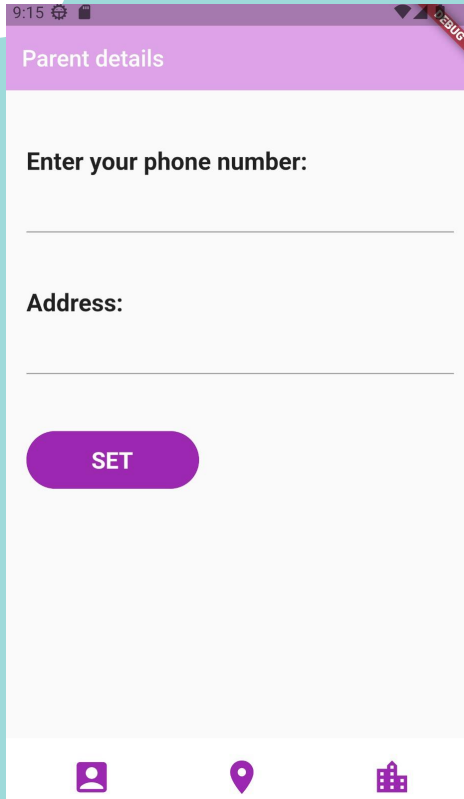


GPS Tracking

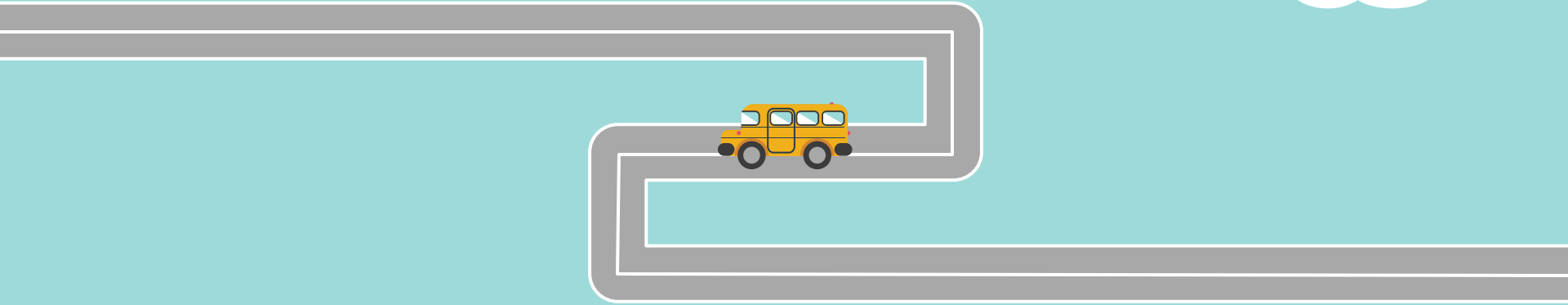


Related with GSM,
And mobile application

Screenshots from the Application



GPS Tracking



The system sends the real time location to the parents.



Google Maps

We use google map API for:

1) location tracking.

2) Mobile Application.



Sensors and Monitoring



Temperature sensor



Co2 sensor



LDR sensor



Ultrasonic

Constraints and Limitation



**GPS isn't available
in closed area**



**GSM module requires
sustainable power and
current source**

Future Work

Add a track for students
who use wheel chair

Add a chat to application
between the driver and
the parent

Stop the bus when
detect person
behind it.





**Thanks for
listening!**

**Maysan Nabulsi & Dua' Braik
Dr. Mahmoud Asa'd**