

Business School Concept Sheet

BY :Roaa Arafat

The **School of Business**, which is considered as a new college, combines **social communication with education** primarily because it depends on teaching through connection and direct integration into the market. Discussions and exchanges on a variety of topics and challenges are intellectual and social.

Education

The College of Business is a development of the College of Business Administration that teaches economics subjects, but in an innovative way

Discussion

The discussion is one of the most important axes for the exchange of information and continuous culture in education

Relationship building

Business students are being targeted from all over the country, in addition to teachers who are from within the labor market .

Technology Learning

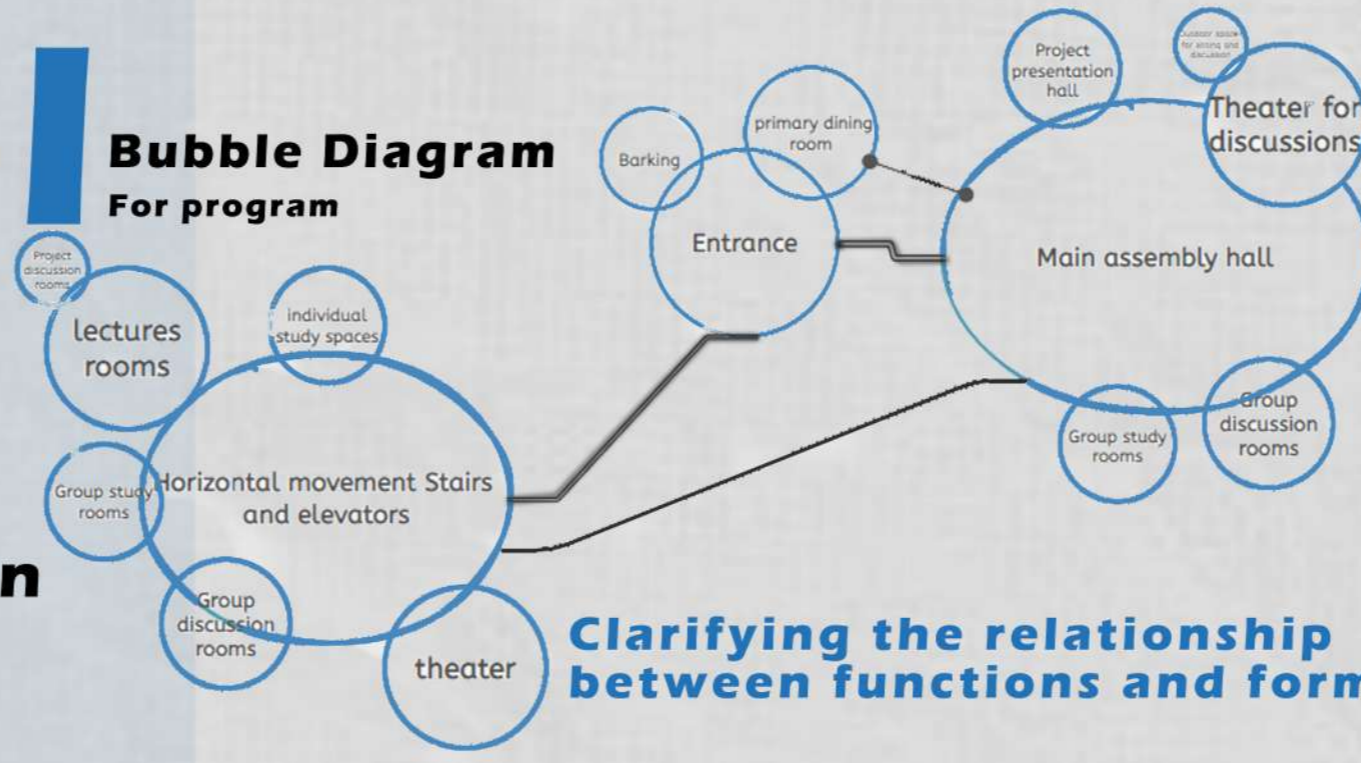
from the labor market the speed Participatory

Leadership

Relationship building Leadership

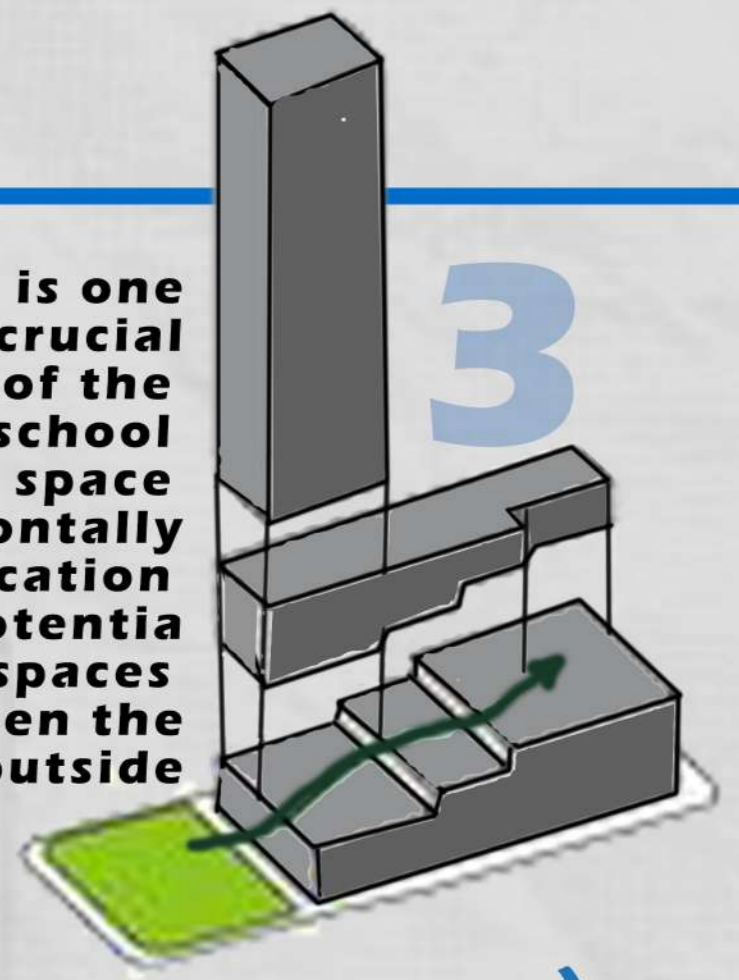


Bubble Diagram For program



Clarifying the relationship between functions and forming them with blocks

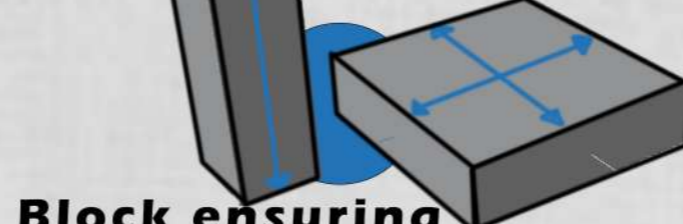
Communication is one of the most crucial aspects of the of Business of school therefore creating a space that extends horizontally is the communication area for the potential of opening outdoor spaces for mobility between the inside and the outside



Concept

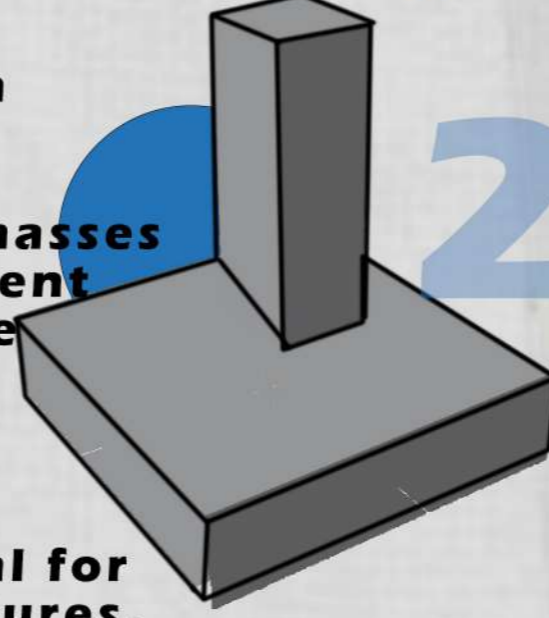
Mainly relying on two blocks to properly distribute the jobs

1 Block ensuring vertical transition between functions



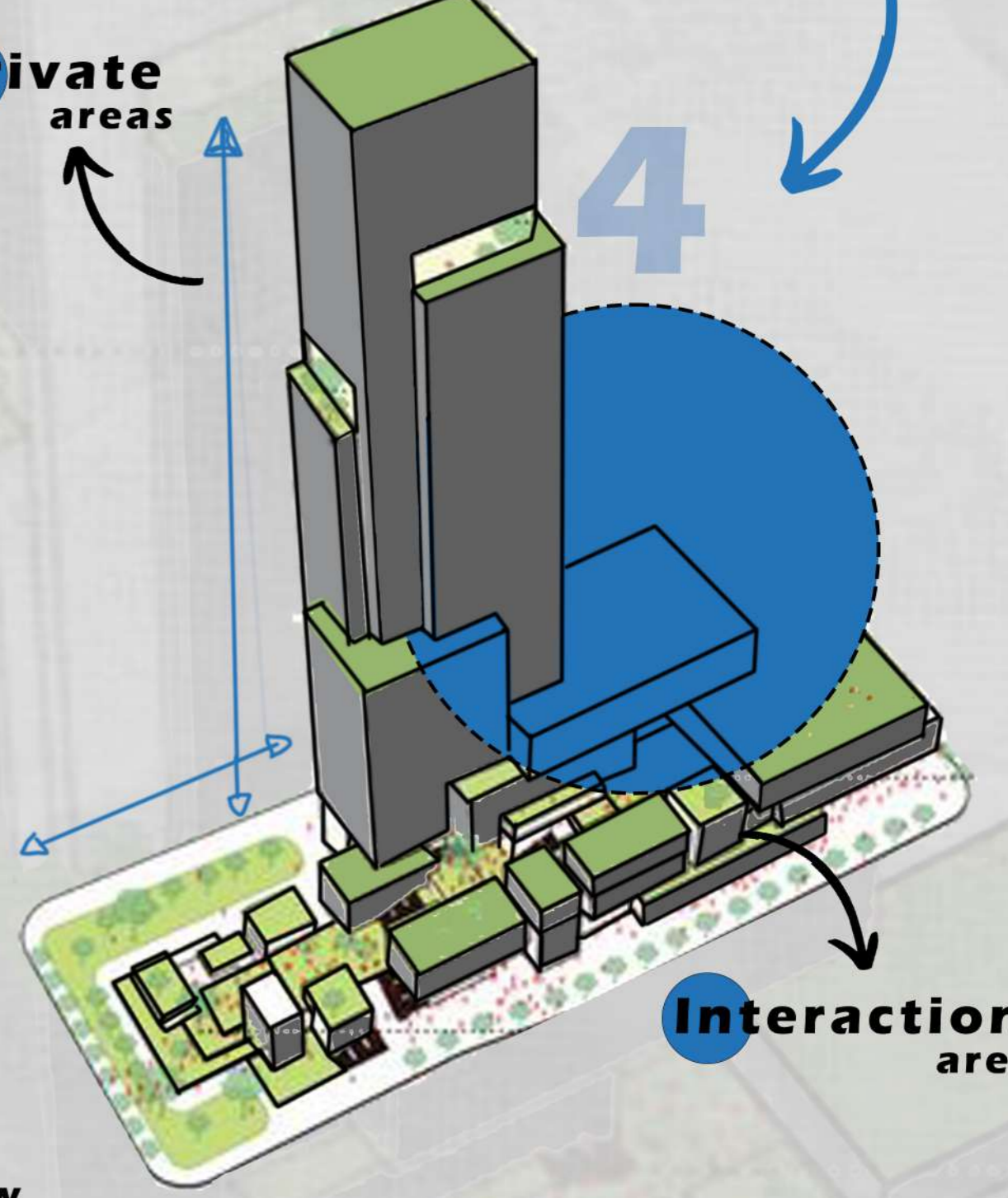
Block ensuring horizontal transition between functions.

Merging the two masses to make the movement into one inseparable body



Make the block extended vertical for teaching and receiving lectures, and make the area that extends horizontally for continuous communication and discussions.

private areas



SITE LOCATION

WHY Rwabi ?

The site in Rawabi was chosen. A typical Palestinian city is Rawabi. It is the biggest investment the

site location
Rwabi City

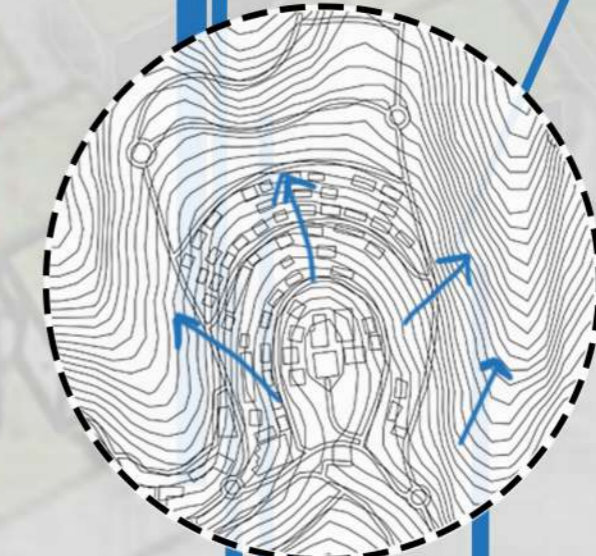
Palestinian private sector has ever launched.

This project's technical and urban planning designs followed the most recent trends in architecture and environmental sustainability.

The city's plan is to increase employment possibilities.

Information and communication technology is one of the most significant leading sectors, as are those that it depends on including media and entertainment, education, health care, and renewable energy. These industries are anticipated to provide between 3,000 and 5,000 permanent jobs, which will help the city develop a strong economy and enhance Palestinian growth.

For Palestine, Rawabi is the future city since it clearly embraces technology and sustainability. It is ideal for the purposes of the college to locate the College of Business in such a city.



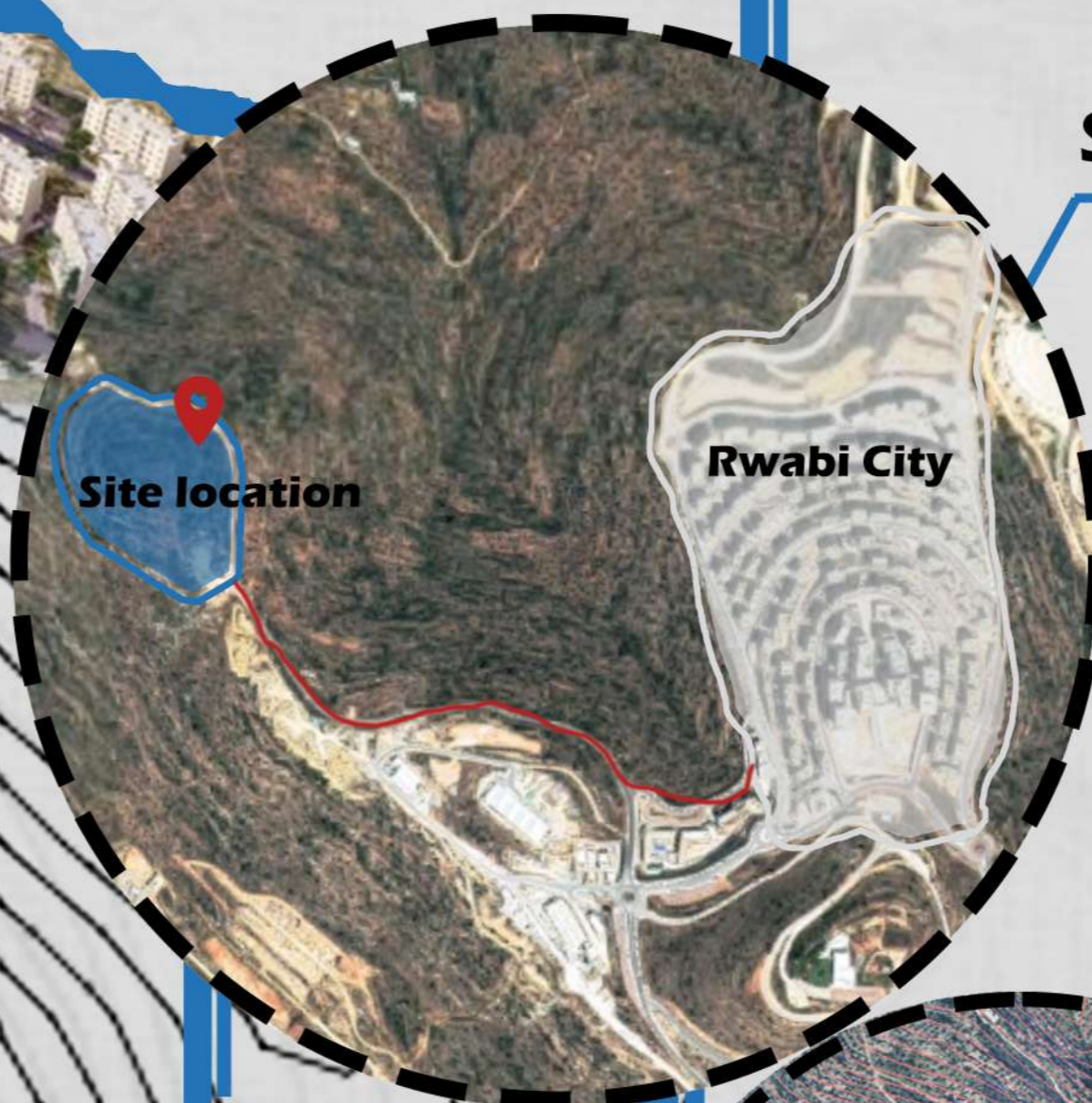
Earth Topography

The location there is unique due to the city of Rawabi's position at the top of the surrounding territories. Because of the large heights and slopes, there are unique views on all sides.



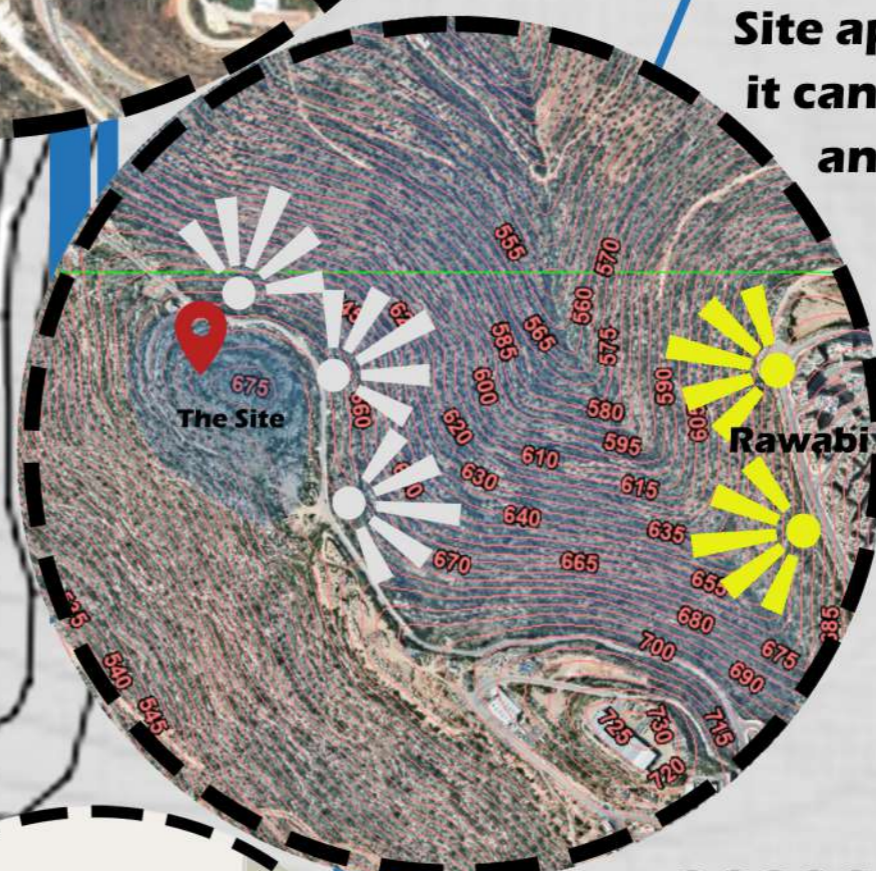
Site location in relation to the city

selecting a location near the city that is accessible from both inside and outside of the city, is on a main street, is situated high enough to provide views from the location itself, or is even accessible from the city to the location



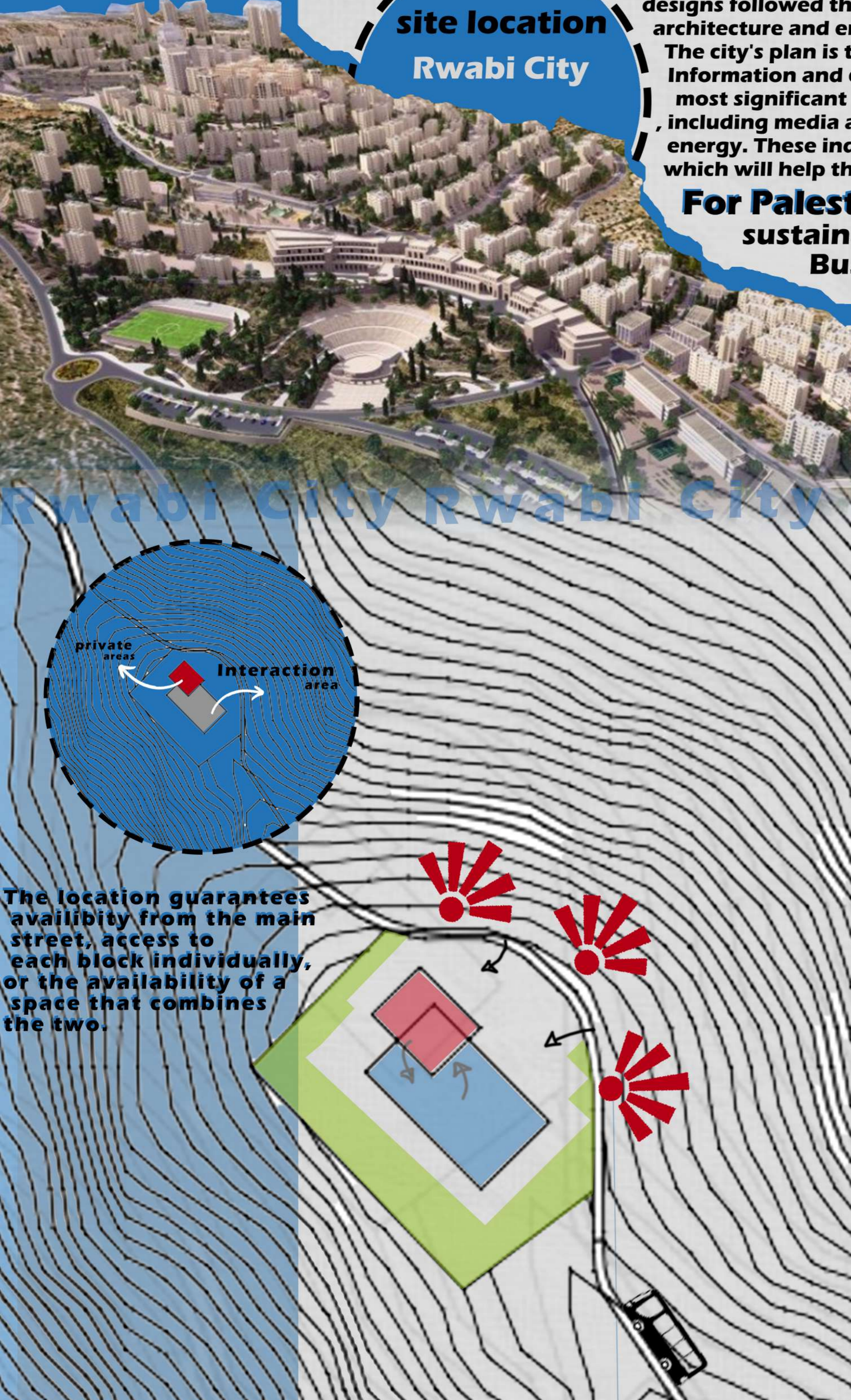
Views

Site appearance. It is at a height from which it can have a view of the surrounding areas, and the city of Rawabi overlooks the Business School in turn, to be a point of view and a future vision for it.



accessible to the site

The site's accessibility and traffic flow are impacted by the fact that it is situated on a preferred path that runs through Rawabi, Ramallah, and the hamlet of Ajloun. This route is also the primary route for the city of Rawabi.



The location guarantees availability from the main street, access to each block individually, or the availability of a space that combines the two.