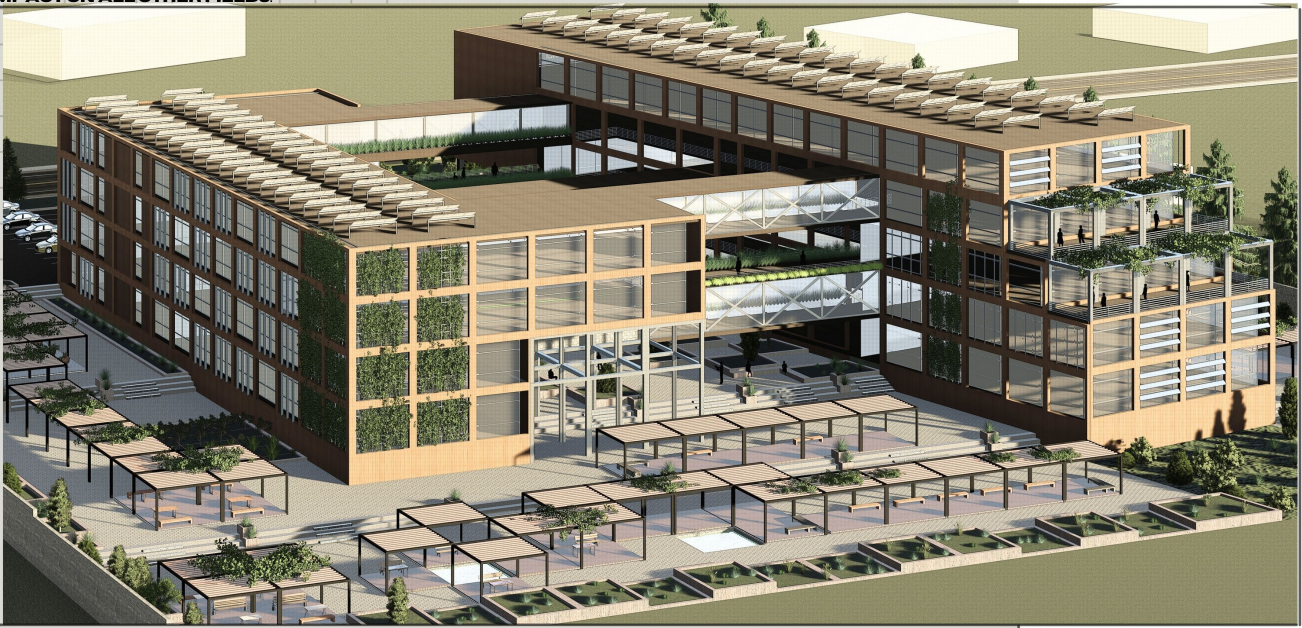
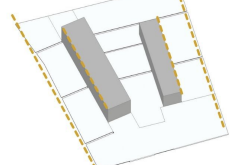


PALESTINE COLLEGE OF ARCHITECTURE

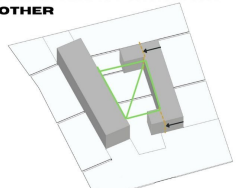
THE CONDITIONS THAT PALESTINIAN ARCHITECTURE WENT THROUGH LED IT TO FOLLOW AN UNCLEAR PATH. SO WORK MUST BE DONE TO CREATE AN ARCHITECT GENERATION CAPABLE OF REFORMING THE PALESTINIAN ARCHITECTURAL FABRIC AND DEVELOPING AND UPGRADING PALESTINIAN ARCHITECTURE BECAUSE ARCHITECTURE EXPRESSES THE IDENTITY OF THE COUNTRY. AND IT HAS A CLEAR IMPACT ON ALL OTHER FIELDS.



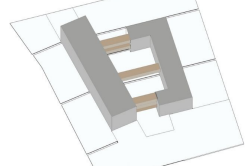
IT STARTED WITH TWO MASSES THAT ARE IN LINE WITH THE SITE LINES



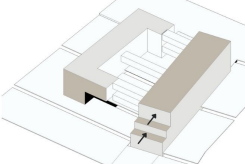
THESE PARTS OF THE MASS WERE ADDED IN ORDER TO FORM A SPECIFIC MIDDLE SPACE AND TO FORM TWO INTEGRATED BLOCKS AND LIVELY CENTRAL ARENA TO LET STUDENTS SIT AND INTERACT WITH EACH OTHER



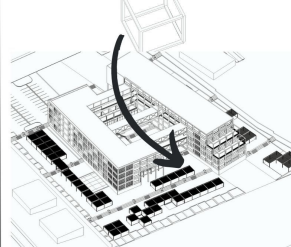
CORRIDORS LINKING THE BLOCKS AND OVERLOOKING THE CENTRAL SPACE



SETBACKS IN THE NORTHERN BLOCKS WITH THE AIM OF CREATING TERRACES THAT ENABLE THE STUDENTS TO SIT AND WORK IN THE OPEN AIR, SO THAT IT DOES NOT BLOCK THE NORTHERN AIR



THE GRID OF SQUARES WAS CLEARLY USED IN THE FACADES AND THE SITE TO EXPRESS THE IMPORTANCE AND DOMINANCE OF EDUCATION, AND THE INTERCONNECTED SQUARE UNITS REPRESENT A GENERATION OF ARCHITECTS WHO WILL JOIN HANDS TO WORK ON THE RECONSTRUCTION OF PALESTINE



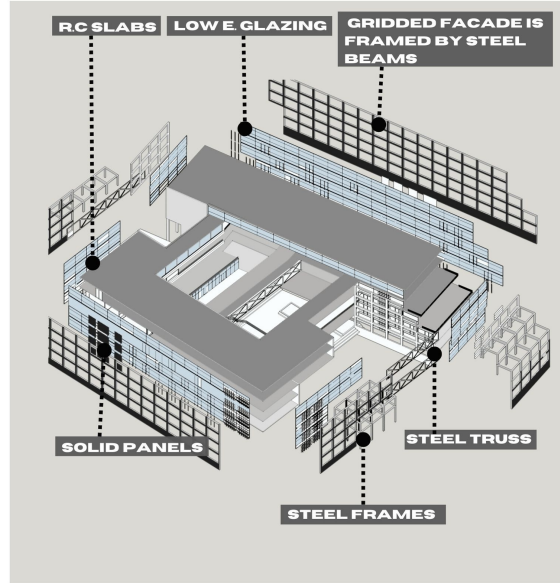
SITE SELECTION

THE PROJECT LAND IS LOCATED IN THE CITY OF JENIN, IN AN AREA CAPABLE OF LINKING STUDENTS IN THE OCCUPIED PALESTINIAN TERRITORIES WITH STUDENTS IN THE NORTHERN WEST BANK, AND THIS CONTRIBUTES TO THE UNITY OF THE PALESTINIAN YOUTH CLASS.



- Jenin Municipality 2.85 km from the project
- al-sinaiyya roundabout, which is 1.3 km from the project.
- Taxis and bus complex, 2.3 km
- Jenin Health Directorate, which is 1.57 km
- Zayed roundabout, which is 1.67 km from the project
- Al-Quds Open University- Jenin branch, 2.3 km

SITE PLAN

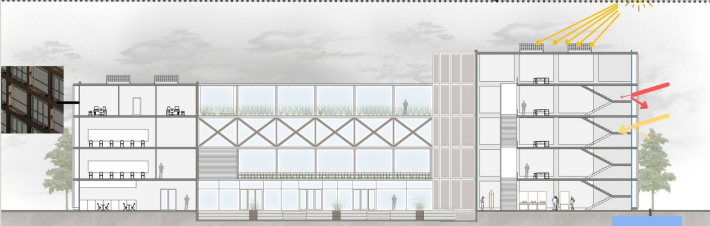
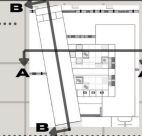


PLANS

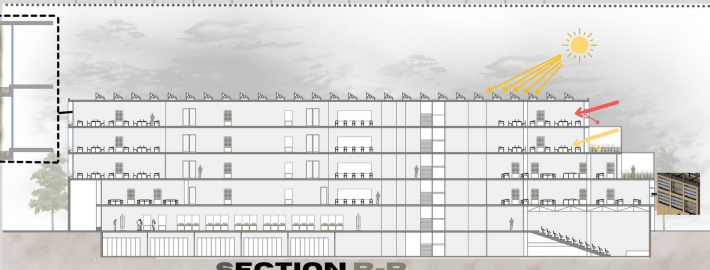


AMAL IBRAHIM

SECTIONS



SECTION A-A



SECTION B-B

ELEVATIONS



EAST ELEVATION



WEST ELEVATION



SOUTH ELEVATION



NORTH ELEVATION

