



# SMART HOME



Control your home from anywhere in the world

By:

Lubna Thaher  
Roaa Jawabreh

Supervisor:

Dr. Alaa Aldin Almsri

# OUTLINES

---

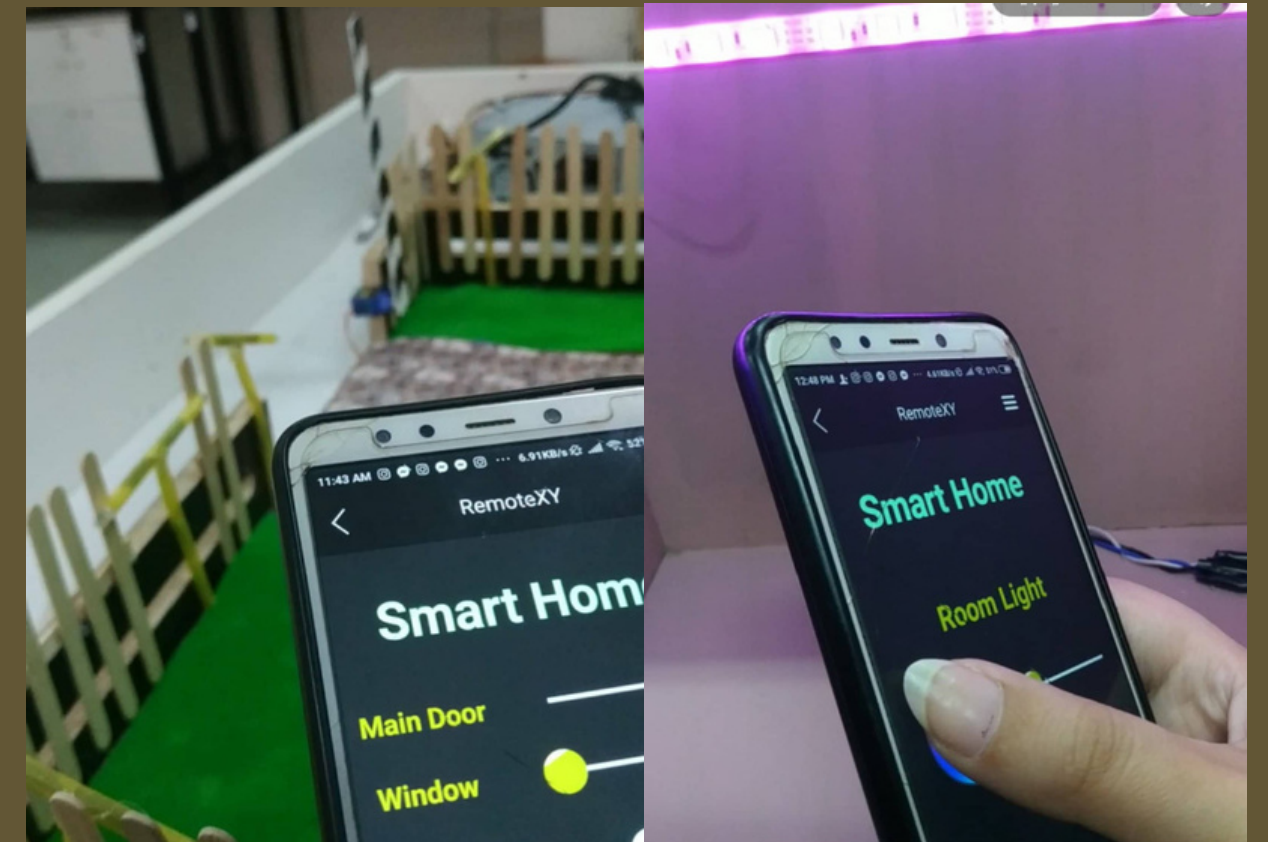
- ✓ what is smart home and IOT
- ✓ Motivation
- ✓ Hardware components
- ✓ constraints
- ✓ Future Work



# What is Smart Home and IOT?

---

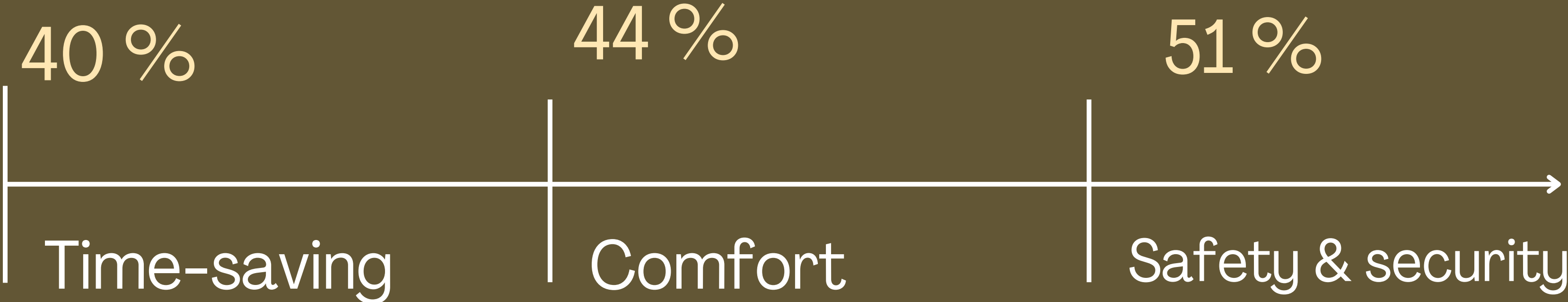
Nowadays , the internet has become a basics and widespread thing all over the world ,and the idea of using wairless communications to control your home is a wondrful , and provides the user with comfort and speed to control the facilities of the home.



# Motiviation

---

why Smart Home ?



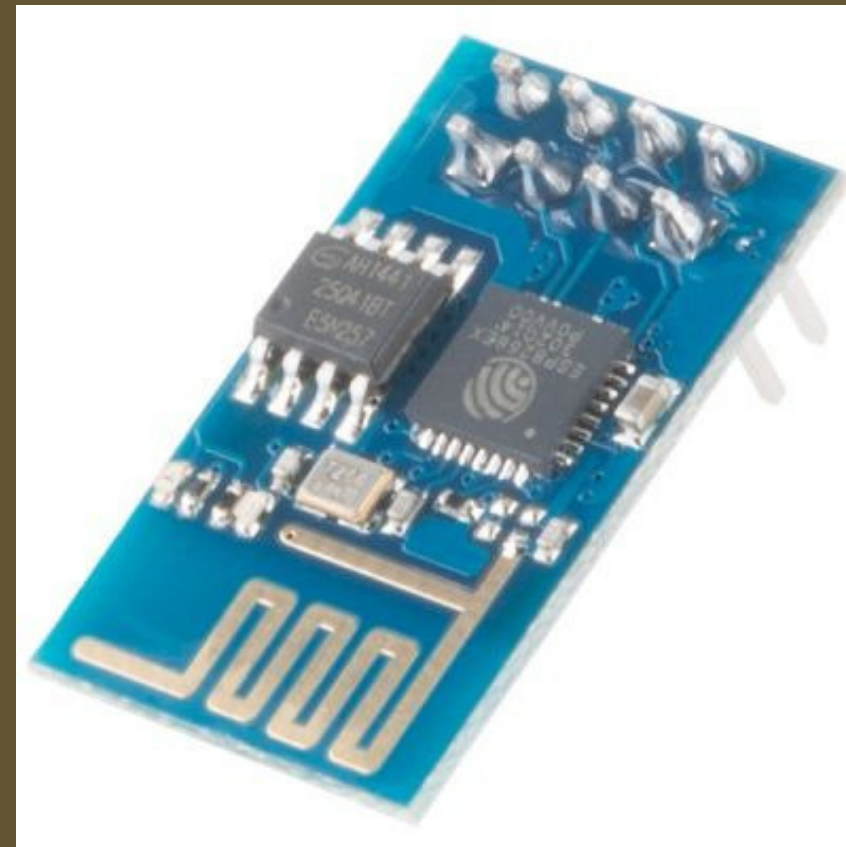
# Hardware Components:

---

## Arduino Mega



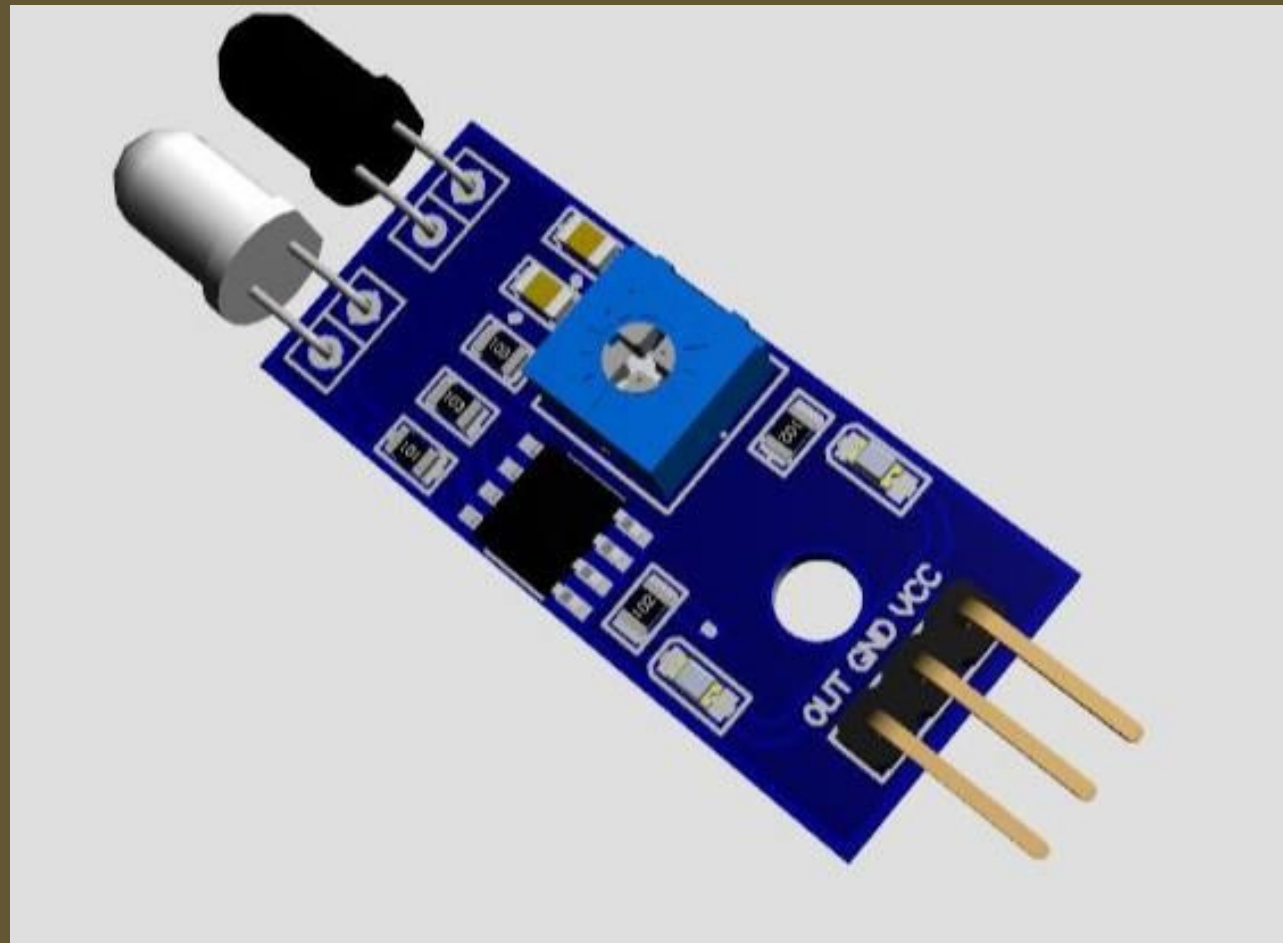
## ESP8266



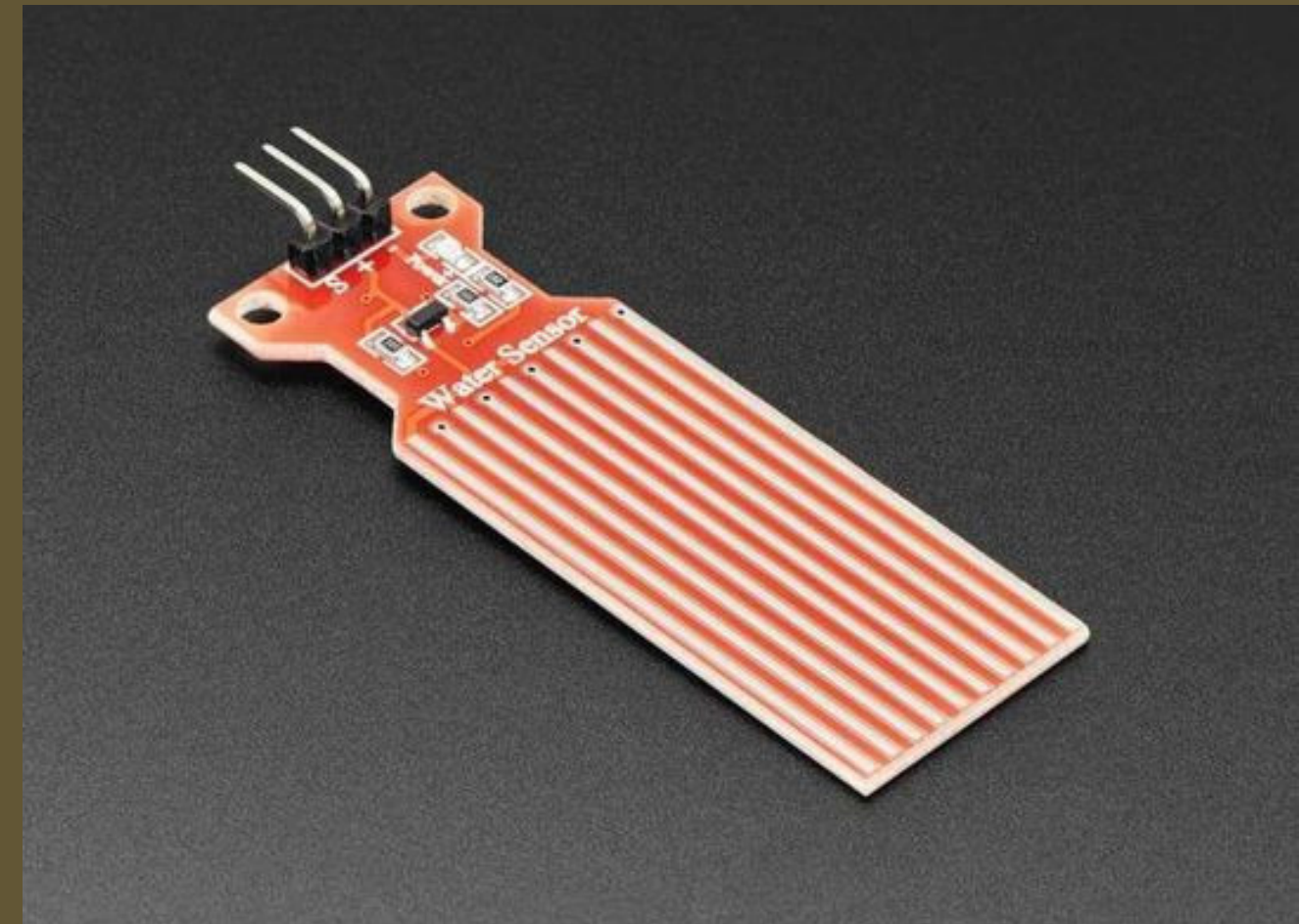
## Breadboard



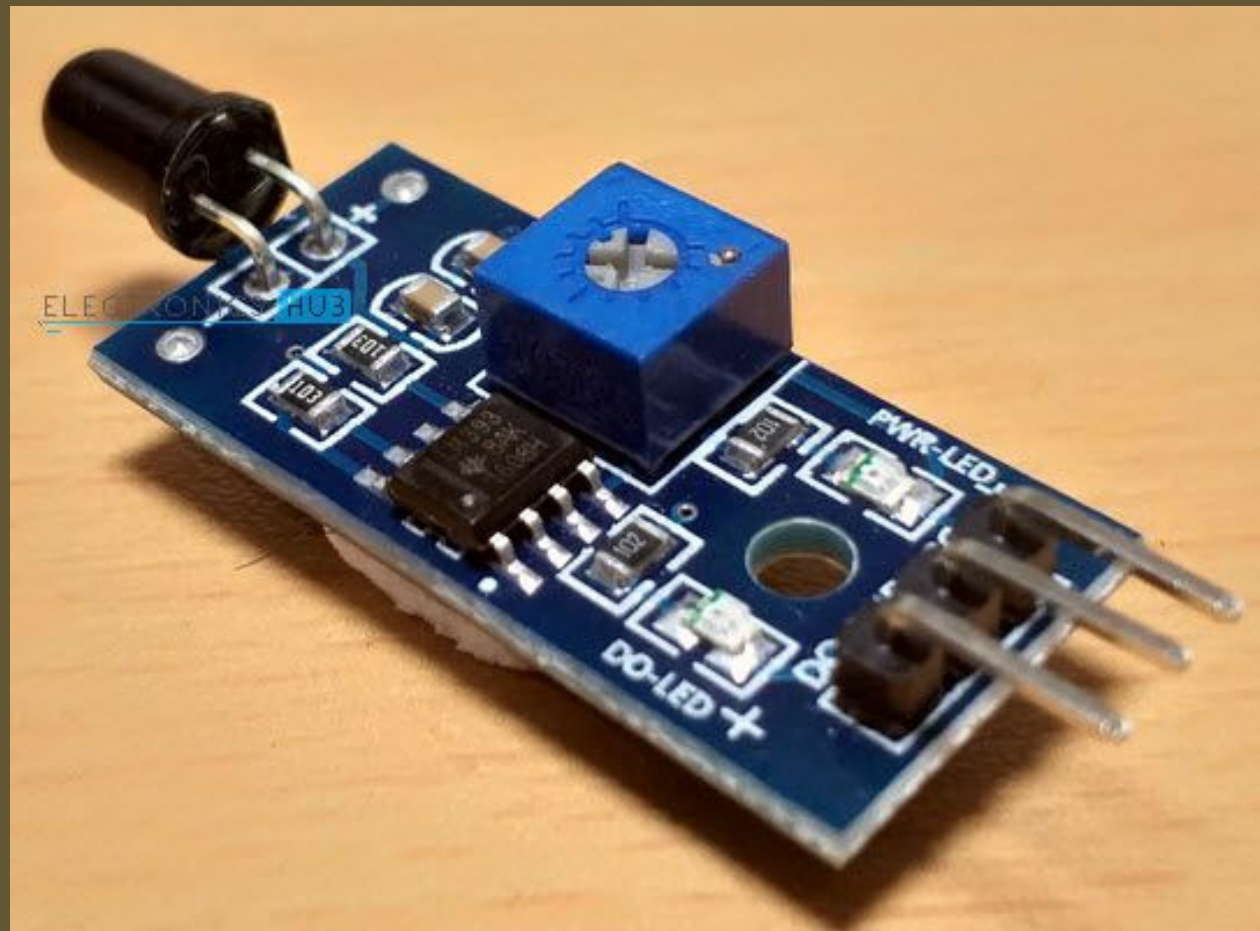
# IR Sensor



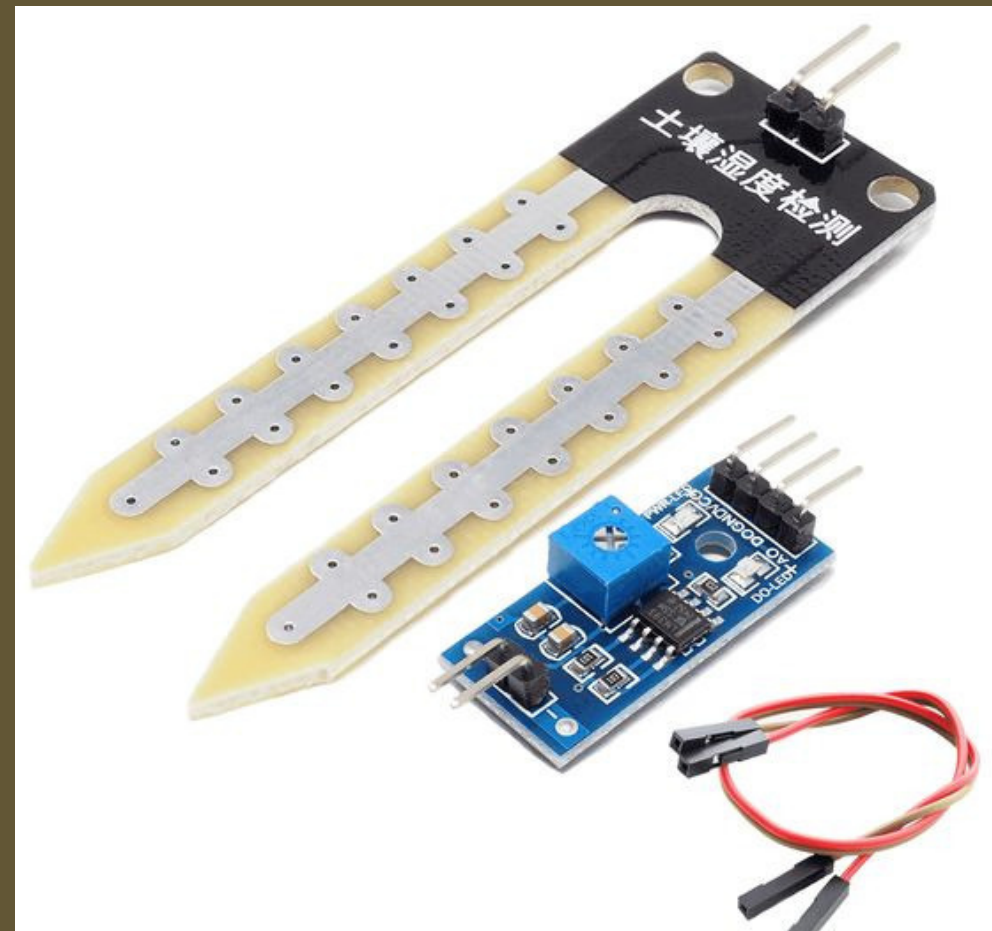
# Water Sensor



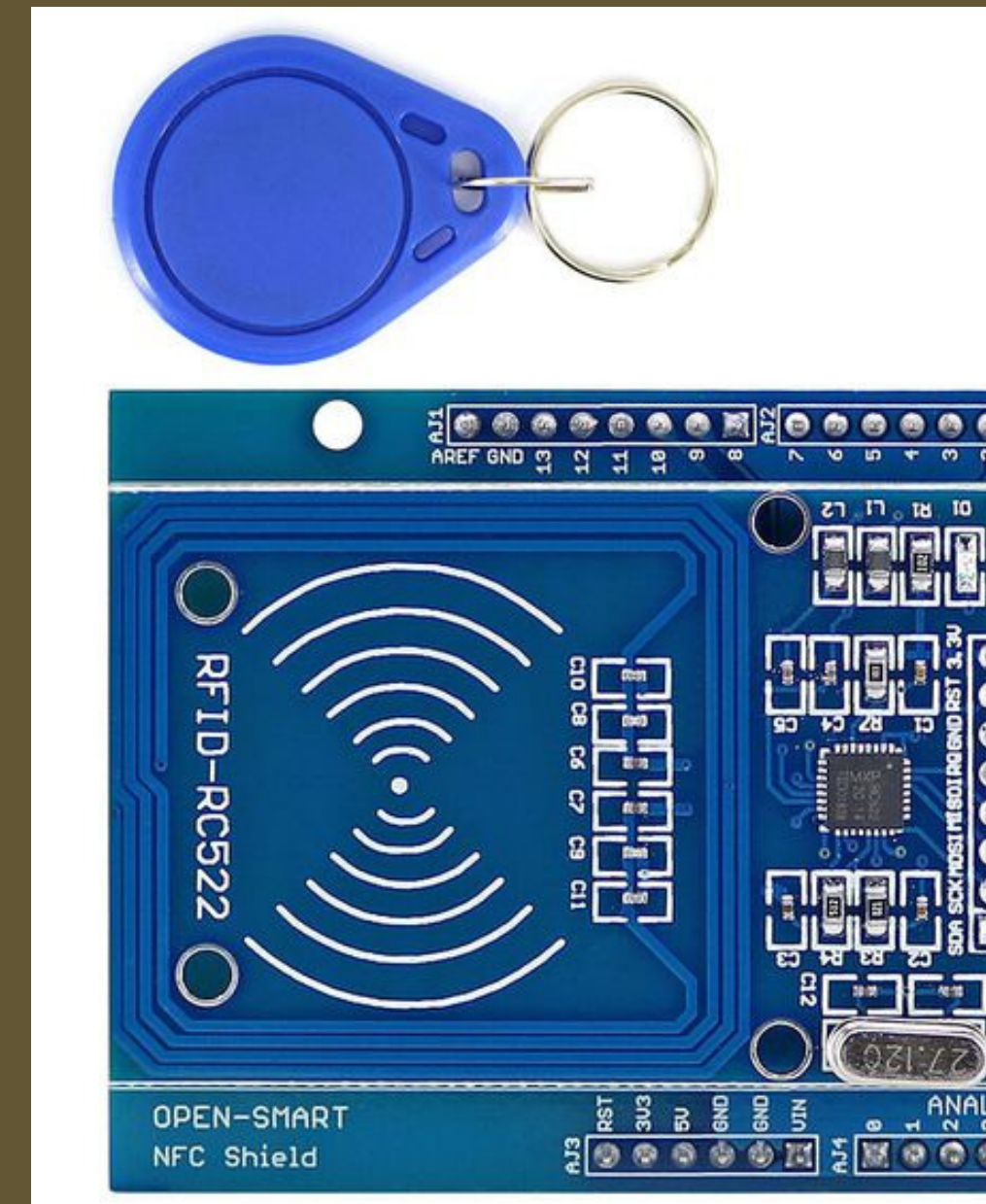
# Flame Sensor



# Moisture Sensor



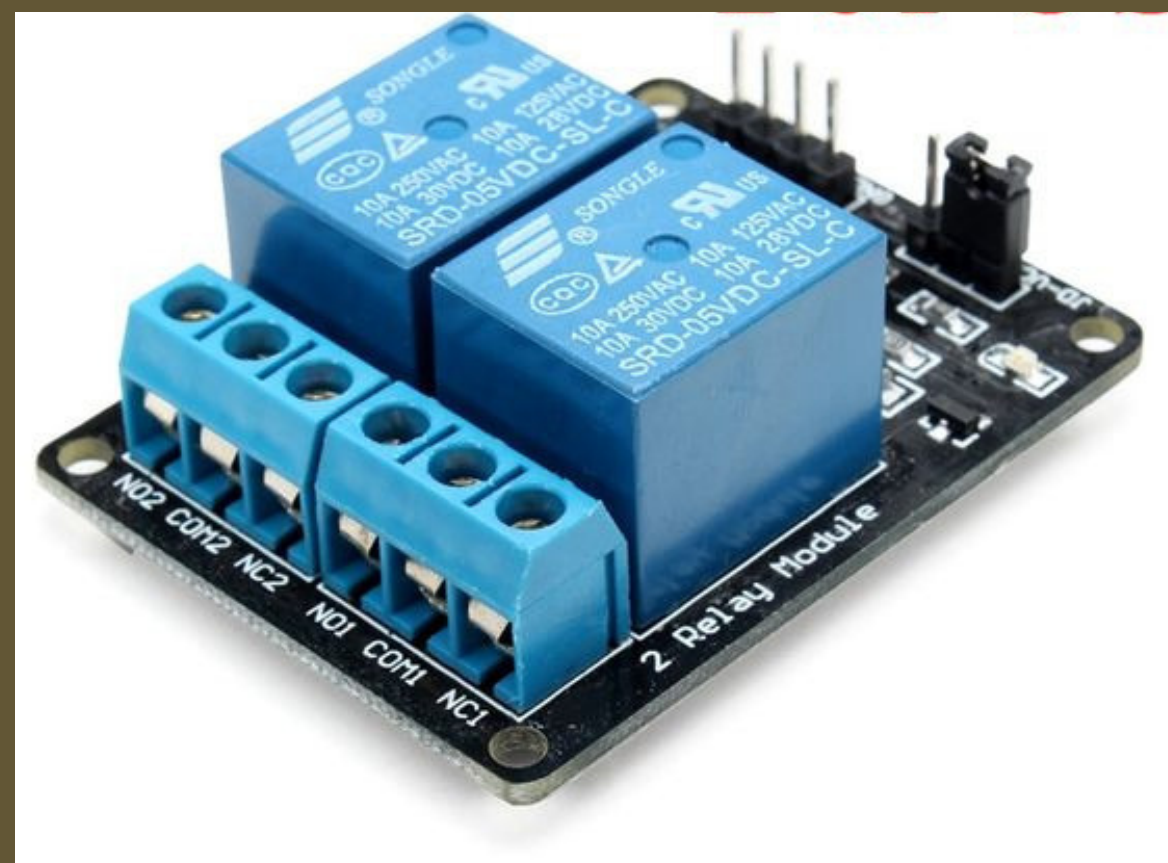
# RFID Sensor



# Servo Motor



# 2 Relay Module



# Buzzer



# Pump



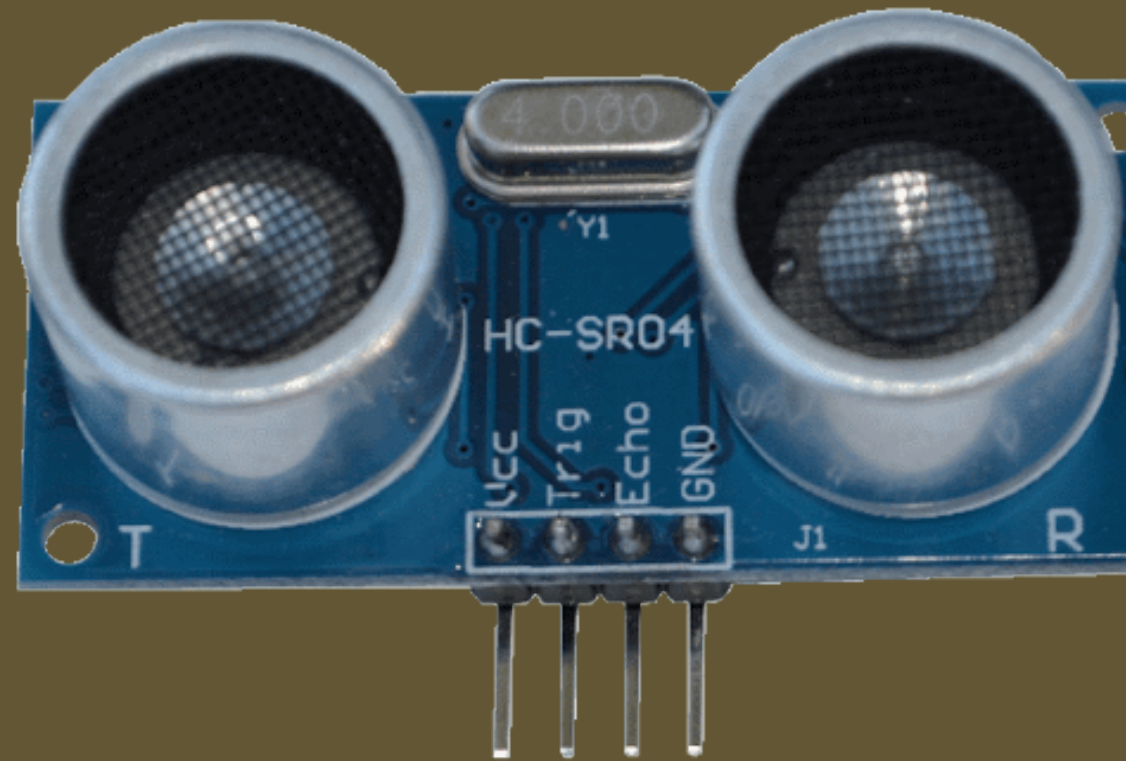
# Fan



# LED Strip



# Ultrasonic sensor



# Infrared IR LED Transmitter



# Constraints

Dealing with small electronic parts

Integrating the RFID part with the rest of the project

electric power source

electronic parts sensitivity



# FUTURE WOEK

**Automatic air conditioning system**

**face recognition system**

**Smart control of the washing machine  
by mopile application**

**Increased security by enabling the user  
to completely shutdown the system by  
phone**

THANK YOU

---