

**1948 – 1922**

...

.

2006 / 1427

**1948 – 1922**

**2006/09/24**

_____		_____	
.....	/		<b>-1</b>
.....	/		<b>-2</b>
.....		/	<b>-3</b>





-	
-	
1	
23 -6	:
7	:1
10	1 :1
11	.(1918 -1871) 1:1:1
14	:2
15	( ) 1 :2
16	2:2
16	1 :2:2
17	2 :2:2
17	3 :2:2
17	2:3

18		1:2:3
18		2:3:2
18		4 :2
19		5 :2
19		:3
19		3:1
20		3:2
20		3 :3
20		4 :3
21		5 :3
21		6 :3
22		7 :3
41 -24	<b>1927 - 1918</b>	:
25		:1
27		:2
28		:3
29		:4
32		:5
32		1 :5
32		2 :5
33		3 :5
33		4 :5
34		5 :5
34		6 :5

34		7 :5
34	.	8 :5
35		9 :5
35		10 :5
36	.	11 :5
36		12 :5
37		13 :5
54 -42	<b>1927</b>	:
43		:1
45	.	:2
49		:3
49	( )	1 :3
51	( )	2 :3
<b>73 -55</b>	<b>1948 - 1928</b>	:
56		:1
57		1 :1
58		1 :1 :1
60		2 :1 :1
61		3 :1 :1
66		3 :1
67		4 :1
68		5 :1
71		:2
71		1 :2

73		2 :2
73		3 :2
74		4 :2
74	( )	5 :2
75		6 :2
76		7 :2
76		8 :2
77	( )	9 :2
77	( )	10 :2
77		11 :2
78		12 :2
78		13 :2
79		
80		
94		
a-d	.	



15	.	(1)
16	.	(2)
17	.	(3)
26	. 1918	(4)
29	. 1927 -1922	(5)
38		(6)
43	. 1927	(7)
46	) (	(8)
46		(9)
48		(10)
49		(11)
50		(12)
50		(13)
58	1945 - 1922	(14)
67		(15)
68		(16)
70	- 1943 1946	(17)
71		(18)

65		(1)
116		(2)
117		(3)
118		(4)
129		(5)
120		(6)

95	.	(1)
96	( )	(2)
108		(3)
109	. 1942 9 ( )	(4)
110		(5)
	1943/4/5	
114	.	(6)

:

:

-1

-2

-3

-4

-5

: :

:

:

:

:

:

:

: -

: -

: -

: -

: . . .

: . . .

1948 - 1922

..  
" "

1868

( )

1920 - 1918

1927

.( )

: .1

: 1948 – 1922

.1

.2

.3

1927 .4

.5

.6

.7

.8

: .2

1948 – 1922

1927

1927 – 1918

:

:

1927 –1918

:

1927

:

.( )

1948 -1928

:



: .4

:  
:

- 1922

1927

1948

.  
:  
( ) .1

( ) .2

. 1927

\ ( ) .3  
.

( 1948-1918 ) .4

) .5

( 1934

1948-1922

) .6

( 2002

: .5

:

) .1

.( 1948 -1922

) .2

( 1948- 1922

1927 ) .3

( )

. 1927

) .4

(

.  
:  
**-6**

:  
-

:  
**-7**

: 1927 1948 - 1922

. -1

. -2

. -3

			:1
		1:1	
( 1918-1871)		1:1:1	
			:2
	( )	1 :2	
		2:2	
		1 :2:2	
		2:2:2	
		3 :2:2	
		3 :2	
		1 :3 :2	
		2 :3 :2	
		4 :2	
		5 :2	
			:3
		1 :3	
		2 :3	
		3:3	
		4 :3	
		5 :3	
		6 :3	
		7 :3	

(1) 1517

1516

(2)

:

:

( )

(4)

(3)

( 1840-1832)

: 32 : (1)

: 7 : 62

.20 1798- 1516

: 47 1900-1700 : (2)

.688

.183 1 (3)

.245 32 : (4)

7

(1)

(2)

. 1841      1840

1841

.1843

(3)

(4)

1846

1847

<sup>(5)</sup> 1851

:      9      1914-1831

\_\_\_\_\_ :      (1)

.32

.249-245      (2)

.33      :      (3)

.26      (4)

.73      (5)

(1)

(2) 1859

(3)

1861

(4) 1863

1868

1888

(5)

:

---

(1)

252

.33

:

.96 1918- 2500 :

(2)

.152 :

(3)

.9 :

(4)

21-20 32 1 :

(5)

.438 :

(1)

1845

(2)

**1:1**

1867

1865

1871

(3)

(1875-1868)

(4) 1868

( )

1875

.21-20

(1)

.58- 57

(2)

24 1948-1922

:

(3)

. 2004

24

59

(4)

:

115

:

26

3

.301



(1)

(1914-1873)

(2)

43

(1918-1871)

1:1:1

1868

1875

:

:

-1

-

-

(1)

1999 5 -

)

.54-32 1999 (36)

54

(2)

.55-52

42-40

11

. 1892	-
.1895	-
.1909	-
. 1911	-
.	-
.	-
. 1914	25000
.	-
(1)	-
	<b>-2</b>
. 1908	-
.	-
.	-
.	-
( )	-
(2)	-
	<hr/>
	(1)
. 1999 29	
.56	(2)

	:	-3
		-
		-
		-
	(1)	-
		-4
	. 1902	153 -
	. 1907	-
	. 1908	-
	. 1911	-
	. <sup>(2)</sup> 1914	-
		-5
	. 1871	-
	. 1875 ( )	-
		-
	. 1908	
		<hr/>
	.37	(1)
.35	64-61	(2)

(1)

-

:

:2

(2)

( )

:

(3)

.( )

( )

(4)

:

:

(5)

:

(6)

:

---

 .36 (1)

" " :

( 881)

( 940)

(2)

33

:

102

.33

(3)

.31

:

:

(4)

33

:

1

(5)

2

(6)

:( )<sup>(1)</sup> 1:2

.(3)

<sup>(2)</sup>(2224)

(1)

( )	

(1)

3

(2)

.114 3 2

102-85

- :

(3)

87-86

. 1992 6 2


: 2:2

1 :2 :2

:

(2)

	(1)
	(2)
	(3)

288 2 : 151  (1)

.92 2

.49 (2)

: 100 92 2 (3)

.226 2

(1)

**2:2:2**

:

.(2)

**(3)**


:

**3 :2:2**

:

.(3)

**2:3**

.(4)

.231-230 2

1948-1922

(1) (1)

262 4 (2)

.68 : / (3)

(4)

. 2000 105

: **3:2:1**

1888

1900

( )

1904

89606

<sup>(1)</sup> 1909

: **2 :2 :3**

1900

7000

<sup>(2)</sup>

**4 :2**

1876

1897

6

138 1

(2)

.548 1991-1841.

.167

: (3)

18



1908

(1)

**5 :2**

(2)

1870

(3)

(4) 1880

**3:3**

**1 :3**

:

(5)

(6)

.123 3 (1)

.98 (2)

(3)

.82 3 (4)

. 54 1 (5)

.97 (6)

(1)

: **2 : 3**

( )

(2)

**3:3**

(3)

4-3

(4)

: **4 : 3**

:

---

.105 2 : (1)

(2)

:

.28-27 2000

.101 2 / (3)

.81 (4)

" "

(1)

: **5 :3**

( )

(2)

: **6 :3**

;(3)

.103 2

82 (1)

.84-83 (2)

.82 (3)

2-1

:

-1

( )

:

-2

30-20

:

-3

(1)

**7 :3**

(2)

(3)

(4)

.84-82

(1)

.111 2

:

(2)

.111

.

-

(3)

.111

(4)

(1)

.111

---

(1)

(1927 -1918)

.	.	:1
.	.	:2
.	.	:3
.	.	:4
.	.	:5
.	.	1 :5
.	.	2 :5
.	.	3 :5
.	.	4 :5
.	.	5 :5
.	.	6 :5
.	.	7 :5
.	.	8 :5
.	.	9 :5
.	.	10 :5
.	.	11 :5
.	.	12 :5
.	.	13 :5

1917-1914

550

880

1918

. 550

:

:

1927

:( 1920-1918)

:1

(1)

1918/9/21

(2)

1914

(1)

1917 16

7 1917 8

1918

1917 9

(2)

. 1918/12/23

1918/9/21

.63 1939-1922

616 (1)

.(1919/4/16)34 :1/1/34

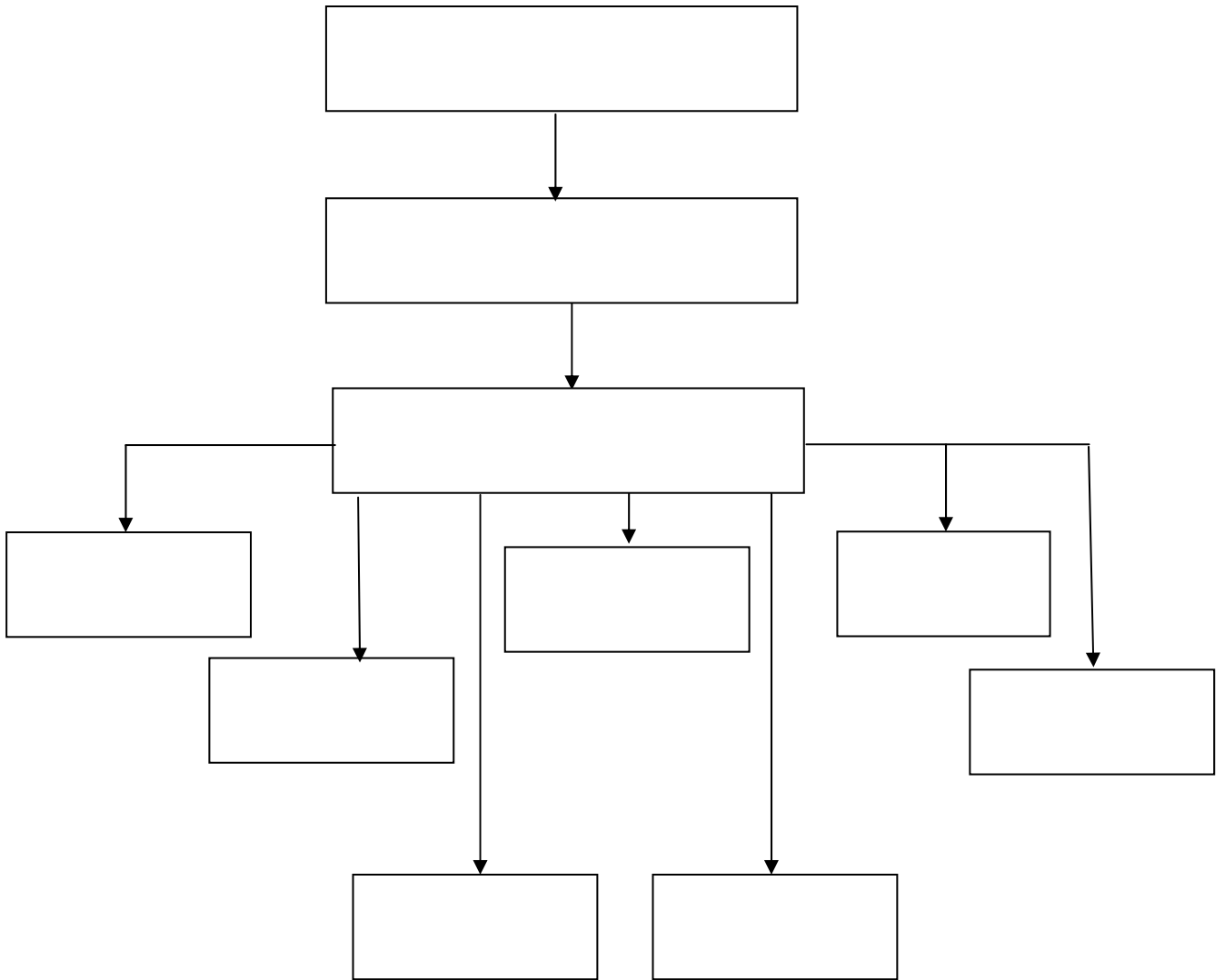
1920-1918

: (2)

:(<sup>(1)</sup> 1918

1918

(4)



1948

1920

(2)

:

---

.153 3 (1)

.52 (2)



-3.

-2 .

-1

.( )

**:2**

:

1921/2/14

(1)

1921

1936

:

:

1936

1938

(2)

(2)

( )

)

(3)

(

.1643 2 : (1)

.235 1936 4 589 (2)

.1938 17 1 (3)

1936

1939

(1)

:

**-3**

1923

:

:

.(

)

:

:

:

:

:

(1)

(12)

(2)

:

1927 -1922

(5)

39	15	5	10	9	<sup>(3)</sup> 1922
122	25	50	25	22	<sup>(4)</sup> 1923
223	10	50	50	23	<sup>(5)</sup> 1924
59	9	15	15	20	<sup>(6)</sup> 1925
89	9	40	20	20	<sup>(7)</sup> 1926
788	30	258	30	200	<sup>(8)</sup> 1927

:4

1920

.

.2822-2821 3 (1)

(2) (2)

.44/3/19 1922 . . (3)

.45/3/19 1923 . . (4)

.46/3/19 1924 . . (5)

.48 47/3/19 1925 . . (6)

.51 50/3/19 1926 . . (7)

.55 54 53 52/3/19 1927 . . (8)

:

-1

-2

(1)

-3

(7)

(8)

(10)

(2)

1929

:

---

1645-1644 2 (1)

(2)

.1

.2

.3

.4

.5

(1)

(12)

(2)

(3)

:

-1

-2

.1650-1644      3      (1)

(2)

.73      1948-1918      (3)

1 :5

1919

(1)

(2)

:

440

293

57

350

(3)

90

-1929)

(1950

(4)

2 :5

.106

.2/16

1945-1944

:

(1)

(2)

.93

(3)

.304-302

:

::

"

"

(4)

(1)

(2)

85

:

3 :5

1924

(3)

1925

;(4)

:

4 :5

:

1924

(5)

.(1923/2/12) 23 :8/16

1928-1927

.59

(1)

.84

(3)

.60

(4)

.89

(5)

: **5 :5**  
1920

(1)

: **6 :5**

(2)

: **7 :5**

(1)

(3)

: **8 :5**

(4)

---

.63	(1)
.65	(2)
.( 1936/12/20)72/3	(3)
.57	(4)



(1)

: **9 :5**

.(2)

67 :( ) .1

56 : .2

29 : .3

58 45 : .4

: **10 :5**

1920

100

1926/11/5

.(3)

60 (1)

.52 : 63 (2)

..23 :43/3/23 1921-1920 (3)

: 11 :5

:  
(23)

(500)

(1)

: 12 :5

(2)

219

(3)

(4)

1923

1924 (5) (60)

126

6 ×5

)

225

.548 1991 -1841 : (1)

.(1923/1/5013 :23 :2/1/23 1923-1922 (2)

.230 155 31 134:177/1/23 1923-1922 (3)

.( 1922/9/2)1 :24/1/23 1923-1922 (4)

.( 1922/9/2)24:1/1/23 1923-1922 (5)

(1)

(2) 270

(3)

(4)

:

13 :5

" :

( )

( )

---

.90

(1)

.( 1923/3/11)93 :6/1/23 1924

(2)

.480 :11/1/1927:23-1926

(3)

.34/2/23 :1927

(4)

(1)

(2)

(6)

8	4	.1
8	4	.2
8		.3
8	67 2 4	.4

103/5/19

1926/11/4

(1929-1926)

(1)

.105 104

.102/19

1929/11/4

(1929-1926)

(2)

8	4 25 2	.5	
8	.	.6	
8	/	.7	
10			
8	( )	.	
8		4	
8		4	
6		.	
6		.	
6		.	
5		.	
8		.	

13		
8		
8		
6		
6	<p style="text-align: right;">.1</p> <p style="text-align: center;">20    19</p> <p style="text-align: center;">38</p> <p style="text-align: right;">30</p>	
5	5	.2
4		.3

6	<hr/>	
---	-------	--

**1927**

. :1  
 . :2  
 . :3  
 .( ) 1 :3  
 .( ) 2 :3



:1

)

(

.<sup>(1)</sup>1927/7/11

-

.<sup>(2)</sup>

1927

(7)

275	70	
10	2	
40	12	
6	30	
20	5	
-	2	
-	20	
-	3	
4	1	
3	1	
25	12	
3	-	

.1 1927/7/15 45-997 4 1927/7/21 45 (1)

15 56 5 1927 14 49 (2)

. 1927

(1)

(2)

( )

(4)

(3)

..."

...

...

(5)"

.4	1927	21	51	(1)
	.1	1927/7/21	51	(2)
.1	1927	21	51	(3)
			.92	(4)
		.3	3	(5)

" :

...

(1)"

"

... ..

(2)"

:

.2

(3)

-(4)(

)

.114 - 113

(1)

.111

(2)

(3)

42

1927

. 1927/9/15 -1927/7/5

(4)

45

(8)

( )

-	10	46	25	2	
-	3	30	33	6	
-	1	28	50	15	
-	1	6	7	5	
-	5	38	27	7	
-	2	39	33	16	

(9)

%	
<sup>(1)</sup> % 12	
<sup>(2)</sup> % 40	
<sup>(3)</sup> % 43	
<sup>(4)</sup> % 5	

.1/3/21

1927/9/15 -1927/7/5

(1)

.52/3/21

(2)

.7 / 13/3/21

(3)

.54/3/21

(4)

:

: .1

% 43

% 30

% 3

% 12

% 41.2

% 45.2

: .2

1.3

% 8.2

% 8.2

%

% 53.2

: .3

%1

% 16

% 19.8

% 26

% 31.5

% 37

: .4

% 5.2

% 6.7

%9

% 49.3

: .5

%17

% 37

% 3.43

: .6

(1)

(2)

(1)

(10)

55	
54	
25	
23	
15	
-	

:

.1

.2

)

: :3

:( ) 1 :3

(1)

:

(2)

:

(11)

109	9	70	30	
68	8	30	30	
83	17	50	16	
31	1	10	20	
55	2	28	25	
<sup>(3)</sup> 452	90	320	62	

(4):

. 1927 21 51 (1)

.46 (2)

.144 116 104 100 98 95 79 48/2/21 (3)

.132 128 115 102 95 26/2/21 (4)

(12)

69	9	30	30	
71	10	40	21	
76	15	21	36	
58	13	15	40	
44	10	12	22	
123	13	23	87	

(1) -:

(13)

9	1	7	1	
6	-	5	1	
9	2	5	2	
30	5	20	5	
9	3	6	-	
7	1	3	3	

(2)

.145 129 118 133 98 93 90 89 36/2/21 (1)

(3) (2)

( )



:( ) 2 :3

1928 22

(1)

1929 17

(2) 99

1930 16

---

.201/7/21 .1/7/21 95 85/6/21 (1)  
 ( 1945- 1927) (2)  
 51

(1)

1930

(2)

(3)

1931/9/5

:

.1

(4) 2 33896

		255	
.(191 - 189)	1930/3/16		(1)
:			(2)

1930/9/1 (145 - 1928)

.86/6/21

.79/7/21 1932/3/14 (1945- 1928) . . (3)

(4) (4)

.2

.3

-:

-

-

-

:

.4

920

450:

.5

(1)

60

1931/7/19

1932/3/9

1932

16

.3/7/21

1931/9/5

(1)

(1)

25

-:

.

.1

.2

.

.3

.

(2)

.4

.43/7/21

(1945 - 1928)

(1)

.153/7/21 80/9/21 22/1/34

1945 - 1928)

. . (2)

# 1948 – 1928

:1

1:1

1:1:1

2:1:1

2:1

3:1

4:1

5:1

:2

1:2

2:2

3:2

4:2

.( ) 5:2

6:2

7:2

8:2

( ) 9:2

.( ) 10:2

1929 – 1921

1936

. 1948

1936

):

<sup>(1)</sup> (

( )

1935

( ... )

.85

:

(1)

(1)

( )

(2)

: **1:1**

(3)

1945 - 1931 - 1922

: 418 4

---

.86 - 85 : (1)  
 .85 (2)  
 208 6 : (3)

.47

1945- 1922

(14)

2	16	470	544	15238	1922
6	7	160	617	16708	1931
4	6	200	680	22360	1945

:

- 1:1:1

- 2:1:1

- 3:1:1

(1)

**1:1:1**

-

150 ( )

---

(1) Qambieh, khaled, (1992), Saring the old town of Nablus, A conseriation Study GlasgowUniversity UK, (PHD Thesis).



(15)

(40)

( )

(1)

(6)

(2)

(500)

2 750 : ( )

(3)2

(4)

5	5	5	
3	3	5	

(5)

% 20	
% 30	

(11)

.120/5/19

(1948 - 1944)

(1)

.1

(2)

(1948 - 1944)

(3)

.

(4)

.

(5)

% 5

-

-

-

-

(1)

**2:1:1**

(2)

-

(3)<sup>2</sup> (500)

<sup>2</sup> (1000) :

-

(4)

-

5	5	5	
3	3	5	

(5)

-

% 25	
% 33	

.120/5/19 (1948 – 1944) . . (1)

.120/5/19 (1948 – 1944) . . (2)

. (3)

. (4)

. (5)

(1) (12) -

% 5 -

-

-

(5) -

(11) -

(4) -

(5) (25)

(2)

: **3 : 1 : 1**

1940/8/28

---

(1)

.120/5/19 (1948 - 1944) . . (2)

1945/3/29

(1):

68

T .p84

:

(2)

(3)

(4)

(5)

(6)

(2)

-

/114/5/19

(1945-1950)

1940/8/29

(1)

. 1945/3/21

1398

(2)

62

(1)

(80)

-

B212

(9)

(10)

T .P 83

(11)

(2)

-

74

(12)

(13)

(14)

(18)

---

(1)

(2)

( )

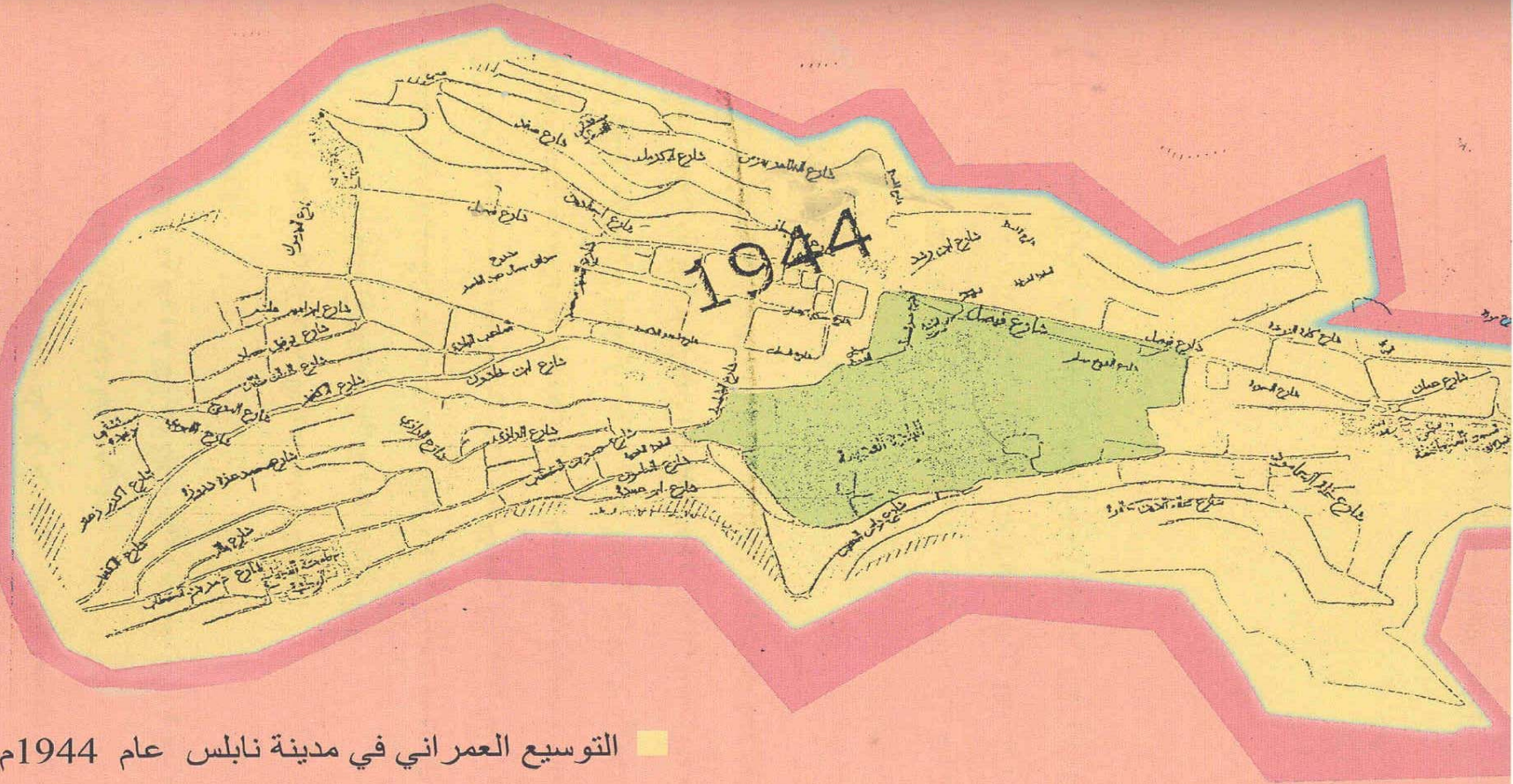
(16)

(1)

:

---

(1)



التوسيع العمراني في مدينة نابلس عام 1944م

البلدة القديمة

مشروع توسيع حدود بلدية نابلس عام 1945

-:

.1

.2

(1)

.3

(2)

.131 130/6/19 (1946 – 1945) . . (1)

.132/6/19 (1946 – 1945) . . (2)



(15)

25	1923 - 1922
50	1925 - 1924
105	1932 - 1927
277	<sup>(1)</sup> 1948 - 1945

: 4:1

1927

(1945 - 1939)

:

(2)

- :

---

.35 34 33 32 131 /6/19 (1948 - 1922) . . (1)

.120/5/19 1945/1/2 . . (2)

(16)

1928	(1) 150
1929	(2) 177
1930	(3) 224
1932 - 1931	(4) .
1935 - 1934	(5) 312
1939 - 1937	(6) 415
1944	(7) 728

: 5:1

;(8) ( )

---

.56/3/19	1928	. . (1)
.57/3/19	1929	. . (2)
.58/3/19	1930	. . (3)
.62 61/3/29	1932 -1931	. . (4)
.63/3/19	1935 - 1934	. . (5)
.7/3/19	1939 - 1937	. . (6)
.72 71/3/19	1944	. . (7)
74/4/19 73/4/19	(1944 - 1934)	. . (8)
4	. 1942 9 " "	(3)

.1943/4/5

.1

.2

.3

:

.4

(1)

-:

.( ) .1

.2

.3

.( ) .4

.( ) .5

.( ) .6

.(<sup>(2)</sup>) .7

1943 /4/5

(1)

.75 73 74/4/19

(1944 - 1934)

. . (2)

(1)

16

1943

. 1946

1946 - 1943

(17)

(2) 1943	34
(3) 1944	45
(4) 1945	76
(5) 1946	39

( )

:

.1 .1

.2

.3

78/4/19

77/4/19

(1945 - 1942)

(1)

(2)

(4)

(3)

(4)

(5)

(1)

(2)

(18)

9.8	
22.3	+
31.3	+
36.6	+

: :2

: 1:2

1929

1932/6/17 (3)

(355)

-:

. .1

. .2

.66 : (1)

169 (2)

.1999

.186 :1/37 ( 1941 - 1919) . . (3)

.3

.4

.5

.6

(1) .7

.8

.9

.10

.11

(2) .12

(2 5772) 1932

1934

1938/6/4

(95)

(3)

1939/5/7

( ) (1)

.121 :1 / 37 (2)

.39 180 :1/37 (3)

1940

(1)

(700)

:

3 :2

1921

(2)

1929

1947

1936

(3)

1945 - 1929

1945

(4)

.90 3 \_\_\_\_\_ (1)

.307 (2)

.131 : (3)

.131 (4)

1947

(1)

1928 : **4 : 2**

(2)

(400) (500)

(3)

(6500)

1948

(4)

( ) **5 : 2**

( )

---

132 (1)

(2)

(3)

.136 (4)



6 93

(4000)

1948 - 1947

(10000)

1945

(300)

1947/1946

1948/4/30

<sup>(1)</sup>( )

:

**6:2**

1945 - 1944

- :

.1

.2

.3

.4

.5

.6

.7

.40/5/24/4/16 1387 :4/15

(1945-1924)

, . (1)

.8

.9

(1)

: 7 :2

1932

( )

:

(2)

: 8 :2

1932

:

1947

/

(3)

.( 1045/5/30) 132/3 :4/16

1945 - 1924

(1)

.89

(2)

.107

(3)

:( ) 9 :2

(1)

: 1936

(2)

( ) 1 :2

1945/10/5 1944/9/28

1947/1/12

863 (160) 331.35  
(35000)

11 :2

1946

(3)

.195 3 (1)

.195 3 (2)

.(1949/12/10)12/16 1945-1944 . . (3)

12 :2

(94)

(1)

:

13 :2

:

.1

.2

.3

.4

.5

(2)

---

.57

(1)

.52

(2)

1927



		( )	.
		:	<b>-1</b>
:1/1/34	1920- 1918	:	.1
		.( 1919/4/16) 34	
	1922	(93) :	.2
		.44/3/19	
	1923	(93) :	.3
		.45/3/19	
	1924	(93) :	.4
		.47/3/19	
	1925	(93) :	.5
		.48 47/3/19	
	1926	(94) :	.6
		.51 50 49/3/19	
	1926	(96) :	.7
		.52/3/19	
53/3/19	1927 1944	:	.8
		.56 55 54	
2/16	1945-1944	: :	.9

1928-1927			.10
		.( 1923/2/12)8:2/16	
	( 1936/12/20)72/3		.11
1921-1920	(123)	:	.12
		.43:23/3/23	
1923-1922	(118)	:	.13
		.(1923/1/5 13 :23 :2/1/23	
1923-1922	(118)		.14
		.230 155 31 177:134/1/23	
1923-1922	(120)	:	.15
		.( 1922/9/2)1 :24/1/23	
1923-1922	(120)	:	.16
		.( 1922/9/2) 24 :1 /1/23	
93 :6/1/23 1924	(120)	:	.17
		.1923/3/11	
:11/1/1927 :23 -1926	(120)	:	.18
		.480	
.34/2/23 :1927	(121)	:	.19
( 1929-1926)	(109)	:	.20
	.105 104 103/5/19	1926/11/4	



( 1929-1926)	(109)	:	.21
			.107 106 105/5/19
	(115)	:	.22
			.48/2/21
	(115)	:	.23
			.79/2/21
	(115)	:	.24
			.95/2/21
	(115)	:	.25
			.98/2/21
	(115)	:	.26
			.100/2/21
	(115)	:	.27
			.104/2/21
	(115)	:	.28
			.116/2/21
	(115)	:	.29
			.144/2/21
	(115)	:	.30
			.26/2/21

(115)	:	.31
		.95/2/21
(115)	:	.32
		.102/2/21
(115)	:	.33
		.115/2/21
(115)	:	.34
		.128/2/21
(115)	:	.35
		.132/2/21
(115)	:	.36
		.36/2/21
(115)	:	.37
		.89/2/21
(115)	:	.38
		.90/2/21
(115)	:	.39
		.93/2/21
(115)	:	.40
		.98/2/21

	(115)	:	.41
			.133/2/21
	(115)	:	.42
			.118/2/21
	(115)	:	.43
			.129/2/21
	(115)	:	.44
			.145/2/21
	(115)	:	.45
			.148/2/21
( 1948-1944)	(112)	:	.46
			.120/5/19
( 1948-1944)	(112)	:	.47
			.121/5/19
( 1946-1945)	(113)	:	.48
			.130/6/19
( 1946-1945)	(113)	:	.49
			.131/6/19
( 1946-1945)	(113)	:	.50
			.132/6/19

( 1948-1922)	(113)	:	.51
			.33/6/19
( 1948-1922)	(113)	:	.52
			.34/6/19
( 1948-1922)	(113)	:	.53
			.35/6/19
( 1948-1922)	(100)	:	.54
			.120/5/19
1928	(97)	:	.55
			.56/3/19
1929	(98)	:	.56
			.57/3/19
1930	(99)	:	.57
			.58/3/19
1932/1931	(99)	:	.58
			.61/3/19
1935 /1934	(99)	:	.59
			.62/3/19
1939-1937	(99)	:	.60
			.7/3/19

1944	(100)	:	.61
			.71/3/19
1944	(100)	:	.62
			.72/3/19
(1944-1934)	(102)	:	.63
			.73/4/19
(1944-1934)	(102)	:	.64
			.74/4/19
(1944-1934)	(102)	:	.65
			.75/4/19
(1944-1934)	(102)	:	.66
			.77/4/19
(1944-1934)	(102)	:	.67
			.78/4/19
(1941-1919)	(197)	:	.68
			.186/1/37
(1941-1919)	(197)	:	.69
			.121/1/37
(1941-1919)	(197)	:	.70
			.180/1/37

(1941-1919)	(197)	:	.71
			.39/1/37
.1387 :4/16	(1945-1924)	:	.72
.40/5/24/4/16	(1945-1924)	:	.73
:4/16	(1945-1924)	:	.74
			.( 1945/5/30)132/
(1945-1924)		:	.75
			.( 1949/12/10)12/16
		:	<b>-2</b>
.1/3/21	1927/9/15-1927/7/5		-1
	1927/9/15-1927/7/5		-2
			.52/3/21
	1927/9/15-1927/7/5		-3
			.7/13/3/21
	1927/9/15-1927/7/5		-4
			.54/3/21
		:	<b>:3</b>
	: 2	:	-1
		:	. 1960:

2	1939-1922	:	-2
	. 1982		
:	1 6	:	-3
		. 1993	
. 1937	1	:	-4
			<b>-3</b>
	. 1927/7/21	54	.1
	. 1927/8/2	50-1002	.2
	. 1927	21-14 56-51	.3

:

: 1 "

. 1993

. 1932 :

. 1978

:

. 1987 -3

. 1997

.

1963

.2000

. 1948

:

. 1934 **1934**

. 1988 : -4 11

**1900 -1700**

. 1992



-1516

. 1956

1798

1882- 1856

. 1990 : - 2

1948- 1918

. 1986

. 1966 . . . -.1

. 1966 . .

. 1987

: : " "

. 1964-1963

1914-1831

. 1983

. . 1991-1841

. 1992 1 1918- . 5200

. 1980

: 1 . " "

. 1997

: 4

. 1975

. 1998

) .

. 1980 . . . (

) .

. 2001 . . . (

. 2000

**1948-1922**

. 1977

**1948-1918**

. 2004

. 2003

. 1998

. 2004

1

. 2000

**1927**

. 1998

. 1992 6 2

87-86

-

1-Qamhieh, khaled, (1992),saving the old Town of Nablus, A conservation study, Glasgow University UK,(PHD Thesis).



(1);

(1)

3	
7	
10	
15	
25	
250	
500	
250	
250	
	( )
5	
3	

(1)

(2)

: .1

( )	










: **.3**




**-4**



	/

-5






;(1)

(3)

600	98	3	335	26	
			95	180	
605		15	2	25	
			15		
	4		25	10	
				70	
183		707	221	6	443
					6
				18	651
	67	720		24	686
	43	545		40	145
	43	545		40	145
	43	554		40	155
				5	109
	22	680		65	795





























**An-Najah National. University**  
**Faculty of Graduate Studies**

**Urban Development in Nablus**  
**During The British Occupation 1922-1948**

**By**  
**Nora Nasooh Ahmad Smody**

**Advisor**  
**Prof. Nizam Iizat Abasy**

**Submitted in Partial Fulfillment of the Requirements for the**  
**Degree of Master of Arts in History, Faculty of Graduate Studies,**  
**at An-Najah National University, Nablus, Palestine.**

**2006**



**Urban Development in Nablus  
During The British Occupation 1922-1948**

**By**

**Nora Nasooah Ahmad Smody**

**Advisor**

**Prof. Nizam Iizat Abasy**

**Abstract**

The Architectural Movement in Nablus city during The British Mandate (1922 – 1948).

Nablus municipality was established in 1868. The municipality held some works and achievements in the city such as, organizing the city, supervising the city cleanness and the medical affairs, and monitoring markets, and providing the city with water and electricity.

The municipality had a big and important role in the architectural movement inside the city, it was supervising the general plans, and it was giving building license, and organizing streets, and making sure of the general structure safety and other issues.

The Nabulsi building was distinguished by its design, and the construction material and the construction of the house bases, and walls, doors and windows, and ceiling.

The were architectural aspects in the city Several religious places, hospitals, schools, Dar al- Barq for Mailing, a railway, and the Quarter Minaret, and al-Sharea' Qayeq.

In the period of the British military rule 1918 – 1920 no decisions or laws or regulations were issued to organize the architectural movement in Nablus, but by the issuance of the resolution of dividing Palestine and

announcing the British mandate on it, the mandate government issued many laws and regulations to organize the architectural movement, and to issue licenses regulations, the law of organizing the Palestinian cities was announced, and Nablus city was one of the first cities announced as organization region, and local committees were formed to supervise the organization process inside the city.

1927 earthquake affected Nablus city and damaged more than two thirds of the city, because of the construction weakness and oldness.

The municipality performed many works to treat the earthquake destruction effects through providing temporary houses for the people affected by the destruction, and to work for building new houses for them in Al Amond Qur. Outside the old city borders and this was the first Nablusi building in the mountains surrounding the old city.

Many organizational projects were put for Nablus city because of the increasing growth of inhabitants and the reduction of internal immigration to the city, such as the project of organizing Jurzim Mountain and Eastern Ebal Mountain. But these designs do not suit the city building because these designs were put for industrial society and not for an agricultural society and none of the Arabic engineers participated in putting them, but only the English engineer (Kindle).

And regarding the dissents of the city organization issues, the municipality executed many procedures ' against them starting with warnings, then paying money.

And because of the effect of the effect to the Second World War on the country, the mandate government on Palestine issued several laws and regulations related to the architectural movement in the city, such as reducing the importing of the necessary materials of construction such as concrete and iron.

Many schools were found in Nablus during the British mandate such as the An-Najah National school, and Al-Hashmiya, and Al-Fatmiya schools, and many reforms and extends were inserted on the National Hospital in the city.