The background is a collage of various images related to urban waterfront planning and design. It includes architectural renderings of modern buildings, waterfront views, and urban infrastructure. The images are arranged in a layered, overlapping fashion, with some showing people walking on a waterfront promenade and others showing architectural details like a curved building facade. The overall color palette is dominated by blues and teals, with some white and grey tones.

# Urban waterfront planning and design

# Contents

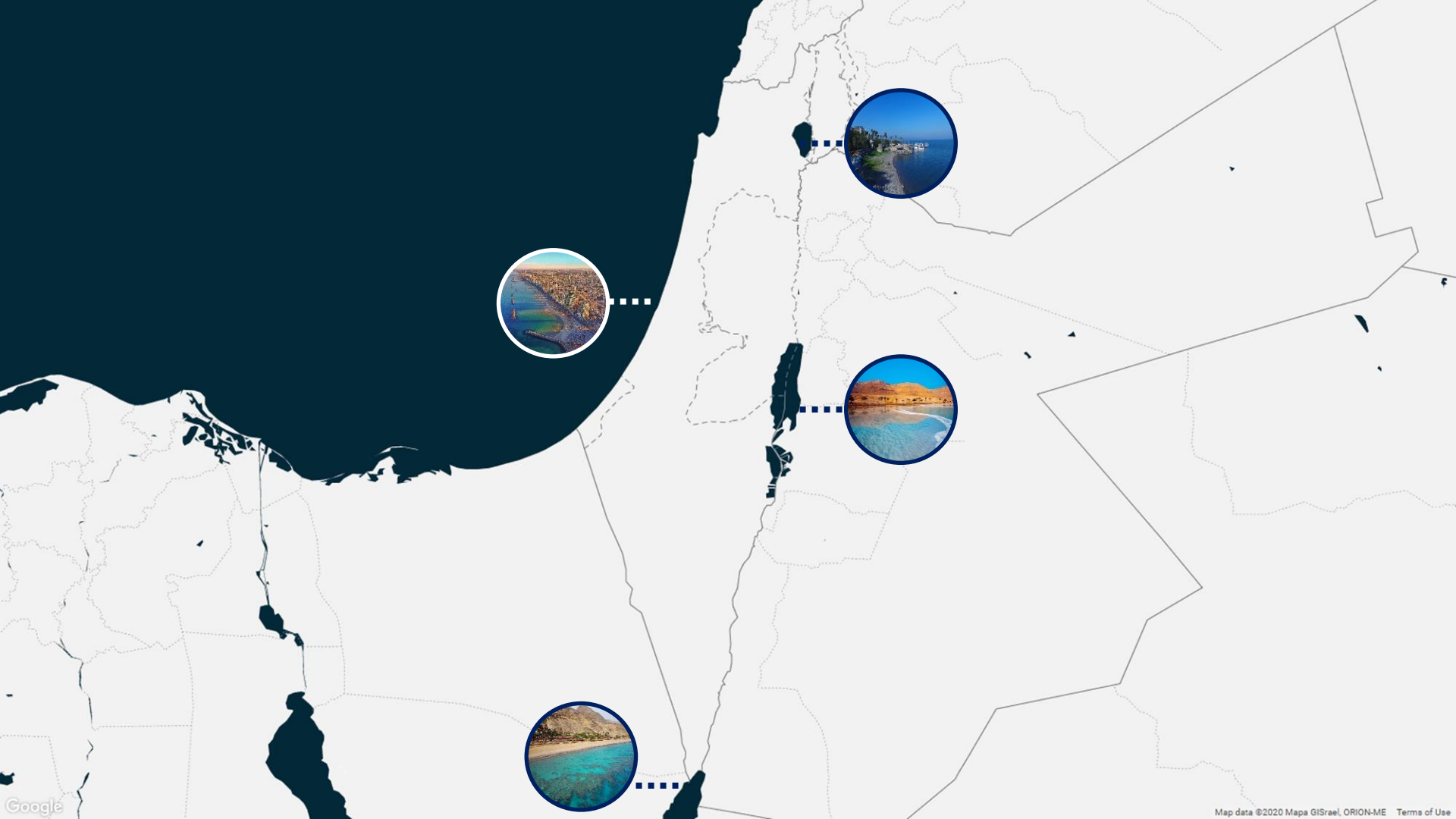
- Introduction
- Site selection
- Site analysis
- Planning and design
- Master plan
- Site plan
- Detailed plans
- Assessment



Project's Idea



Project's importance and  
objectives





Dead sea



Mediterranean coast



red sea



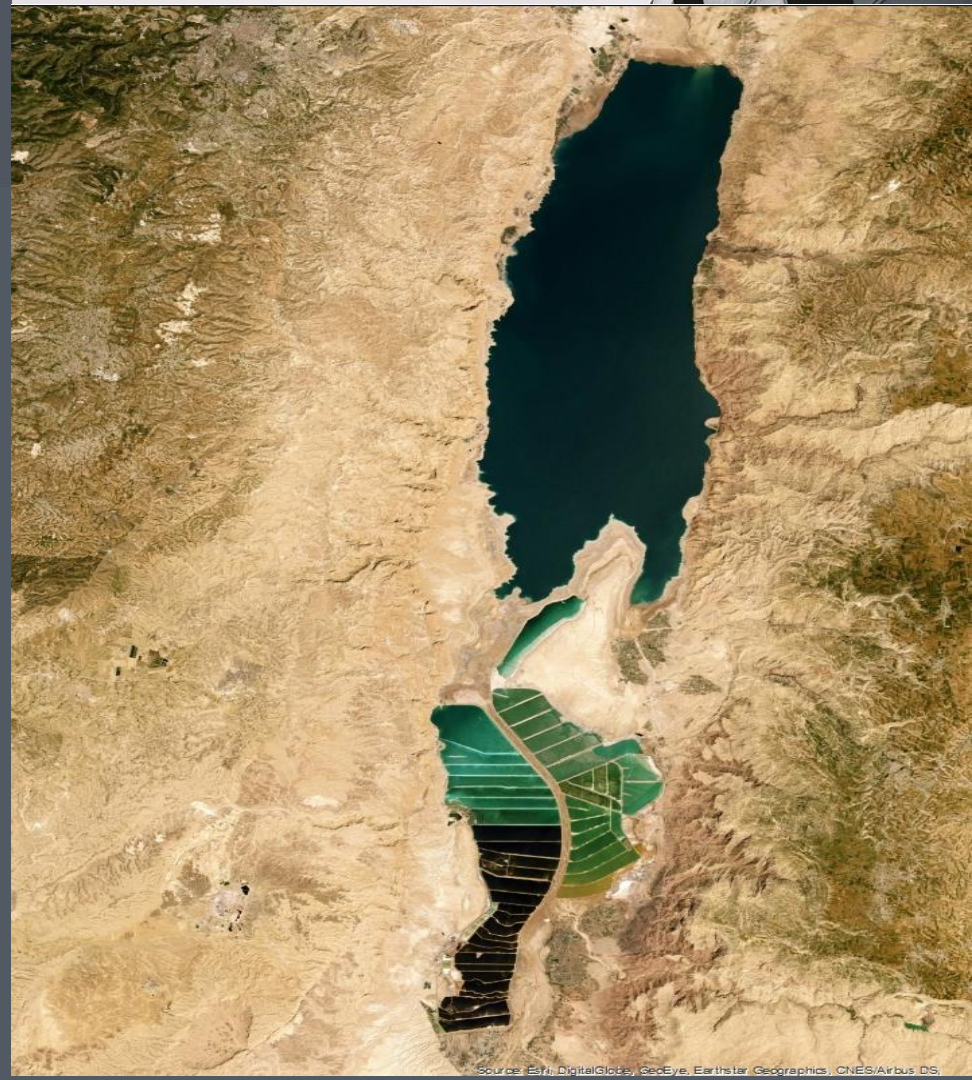
Tiberias lack

# Chosen location

The selected location for establishing the project is at the dead sea.

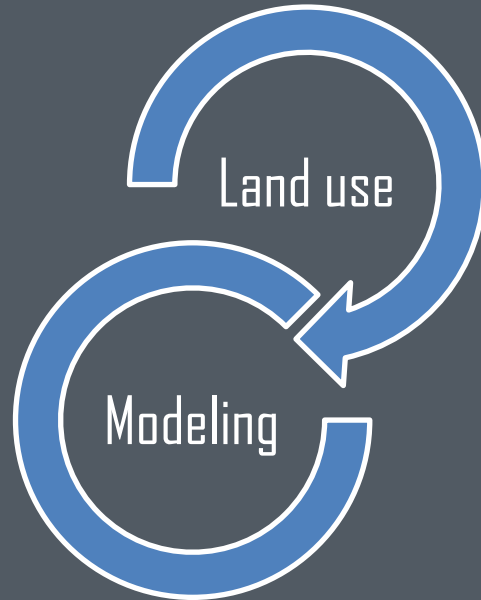
Reasons:

- the easiest accessibility for Palestinians.
- low number of developments in the area.
- The border with Jordan.



# The Site Choice

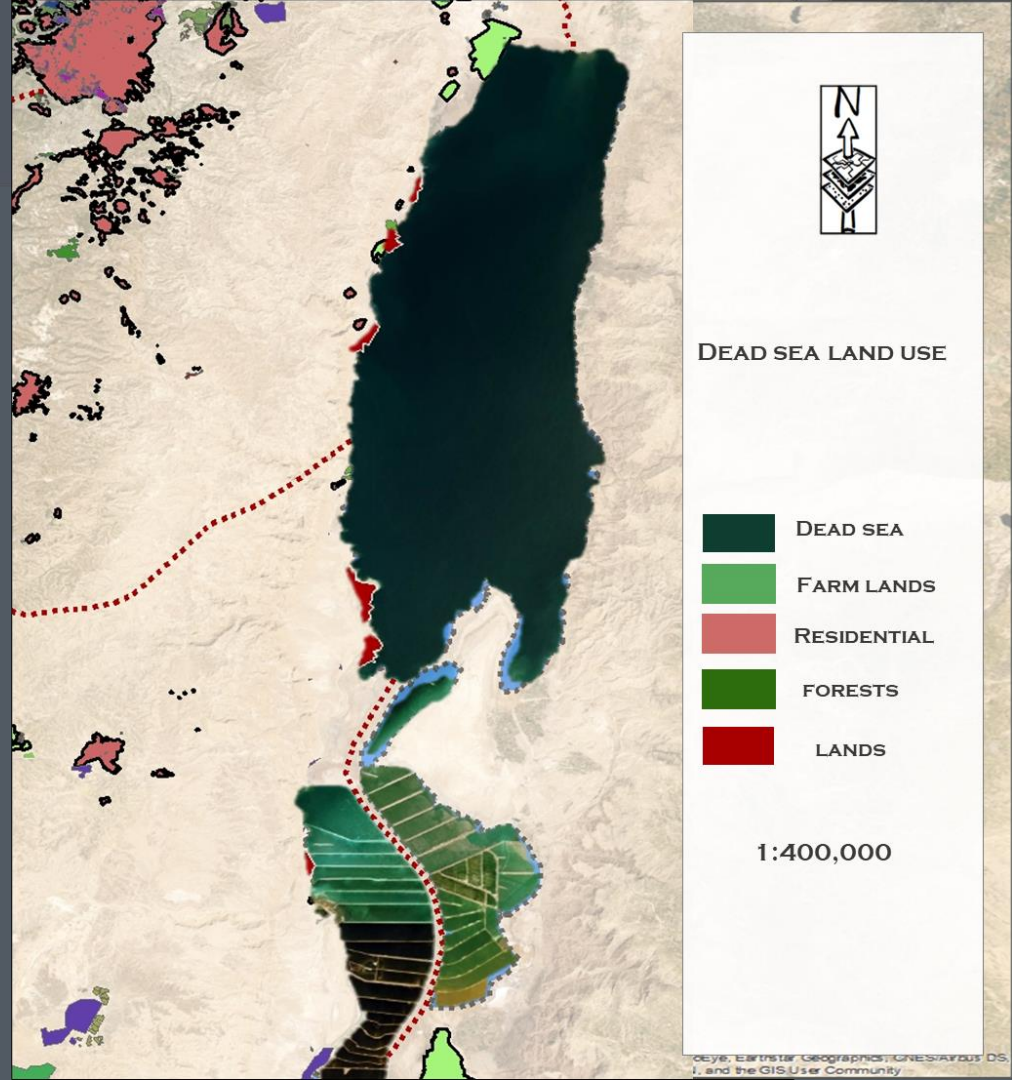
Choosing the suitable site passed through two process



# Land Use Analysis Result

According to the land use analysis,

The final result lead to an 11 lands with almost equaled areas.







# Modelling



DEAD SEA

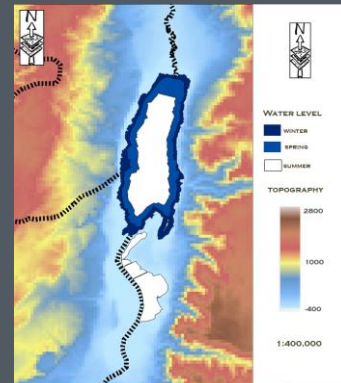
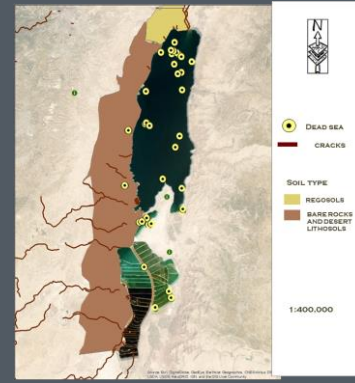
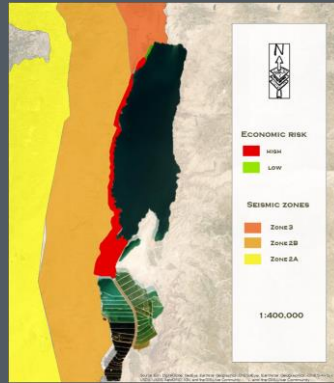
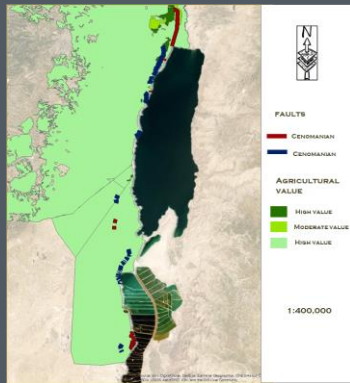
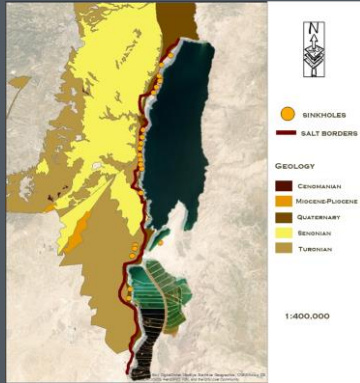
# Modelling

Layers were used for GIS modeling

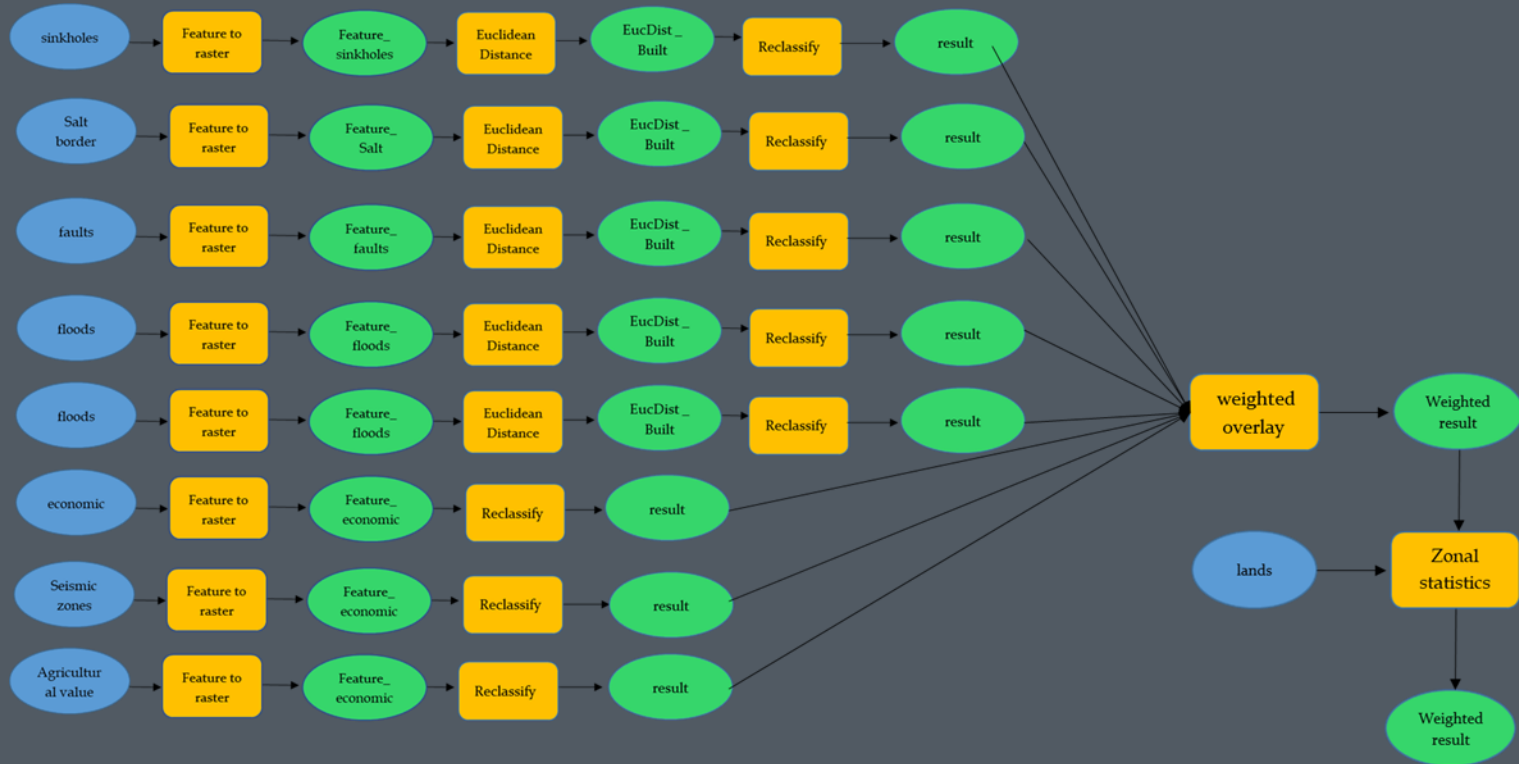
layer	weight
Sinkholes	15
Salt borders	12
Faults	15
Floods area	5
Economic situation	12
Soil	5
seismic zone	10
Agricultural value	5
Geology	8
Recorded dead sea earthquakes	8
Topography	5

# Modelling

Mapping for the Layers were used for GIS modeling.



# Modelling



Weighted overlay result

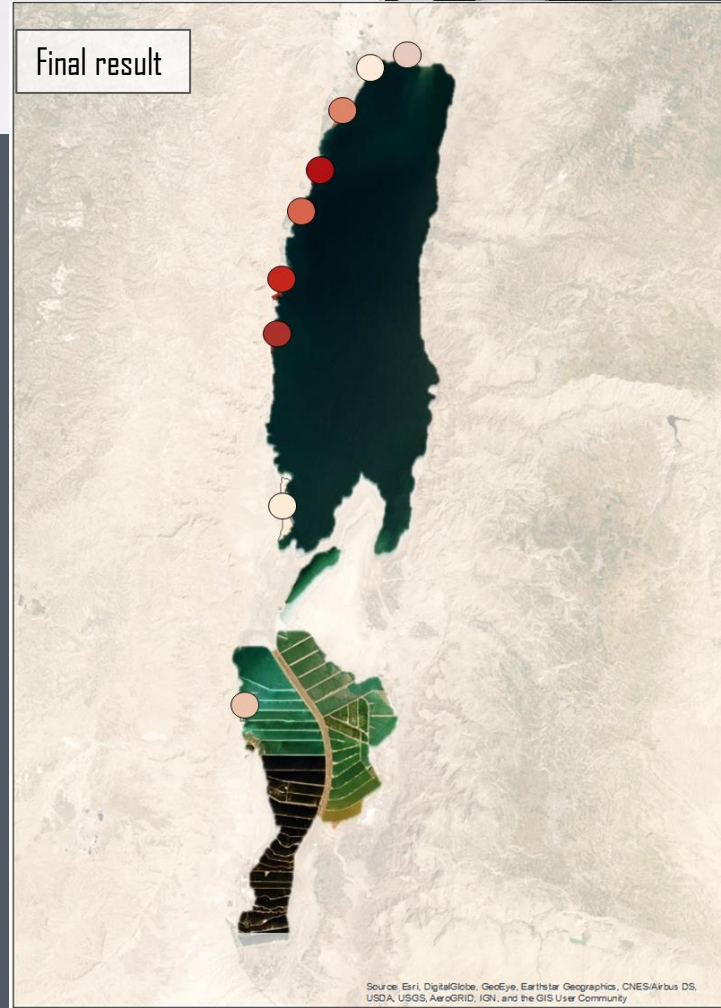


Source: Esri, DigitalGlobe, GeoEye, Earthstar Geographics, CNES/Airbus DS, USDA, USGS, AeroGRID, IGN, and the GIS User Community

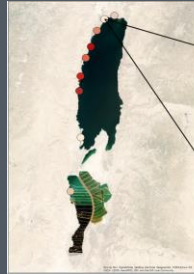
The result shows different raster cells each cell has a value of the five scores were calculated in the model. Forming areas with the five scores.

Final result , the lands were classified according to their potential to be the selected site

Final result



# Site analysis

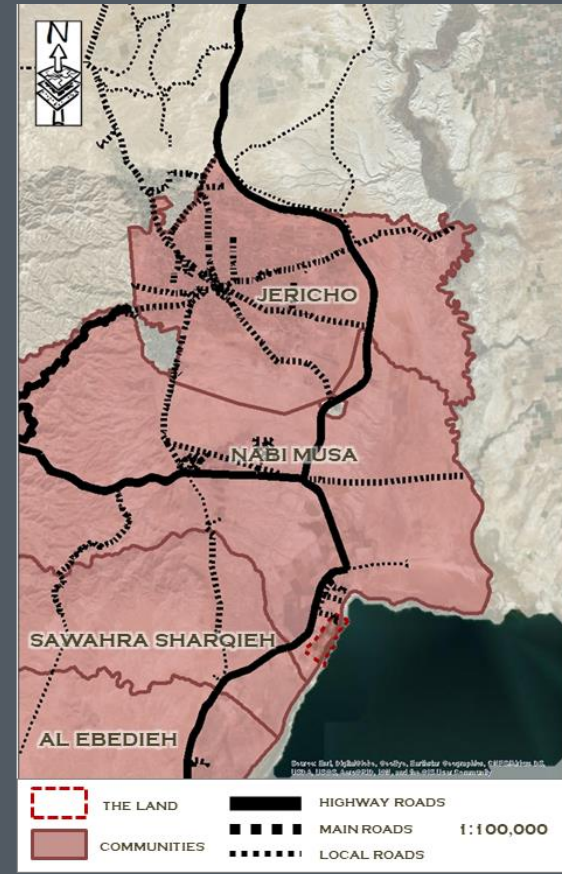


# Site accessibility



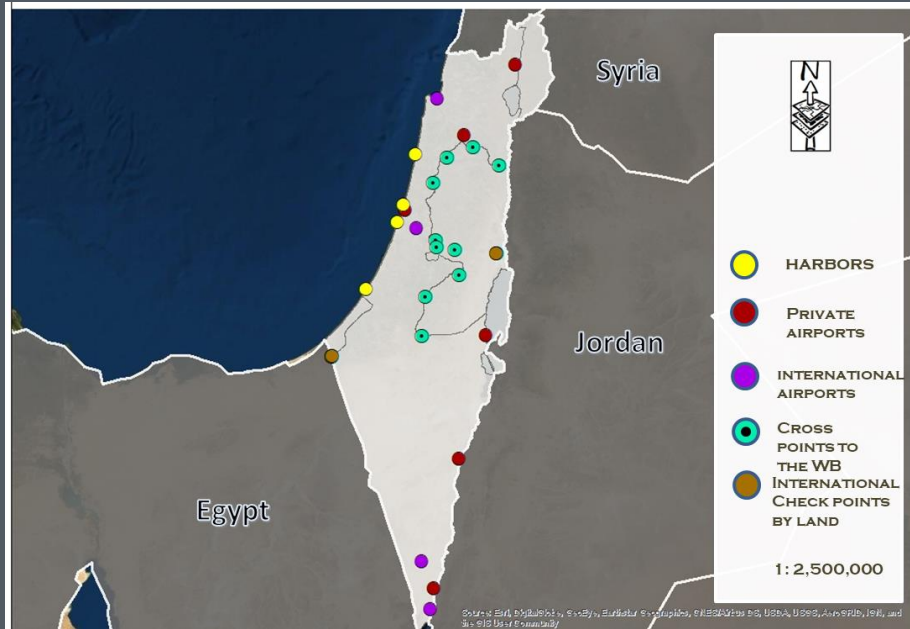
90 highway, that connects the northern and southern parts of the dead sea.

And the road passes by the site location .

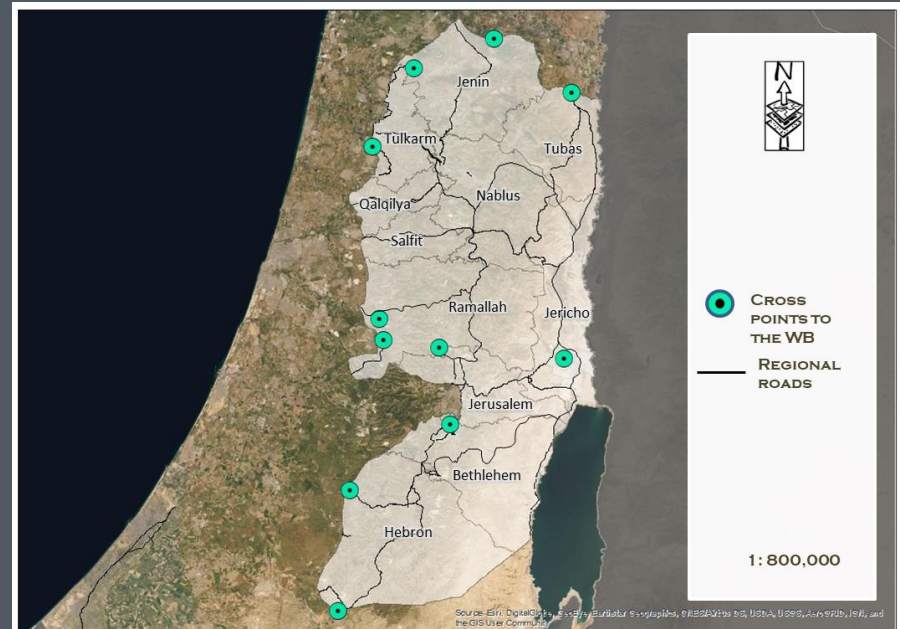




# Site accessibility

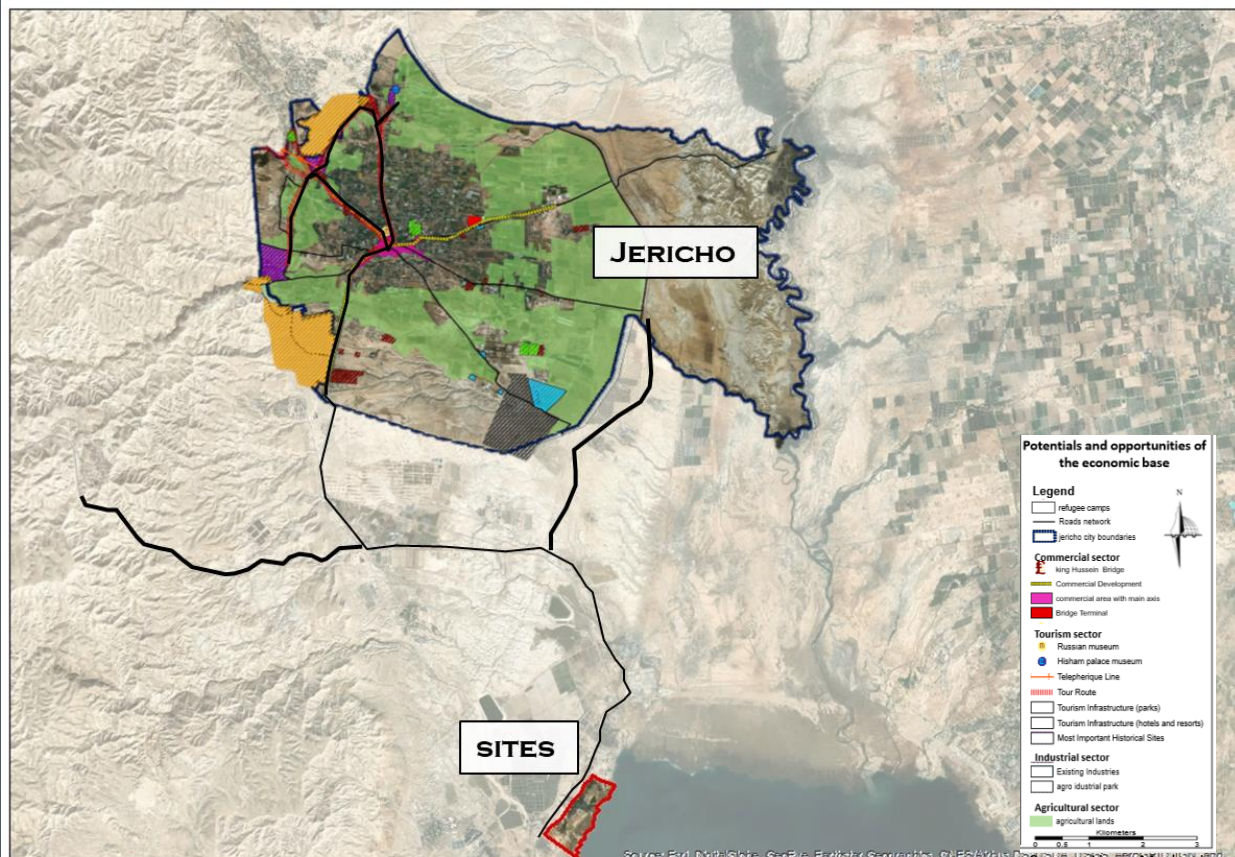


The map here shows the Cross points to and from the West Bank to the neighbor countries such as Jordan and Egypt.

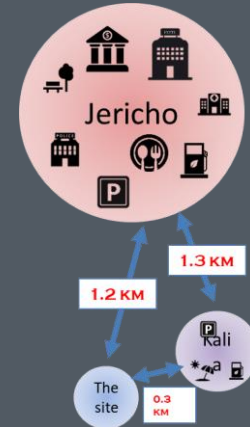


The map shows the main routes that connects the WB cities and their connections with the route 90 along Jericho province and dead sea.

# The site and Jericho



Jericho is the closest urban center to the project's site, where the site could be enforced with the main facilities and services, taking into consideration the tourism value of the city Jericho .



An aerial architectural rendering of a large, modern building complex situated on the waterfront of the Dead Sea. The central feature is a large, curved structure with a prominent, illuminated glass and steel facade. To its right is a multi-story building with a flat roof and a courtyard area containing a swimming pool and lounge furniture. The foreground shows the calm water of the Dead Sea with a few sailboats. The background is a vast, flat landscape under a hazy sky.

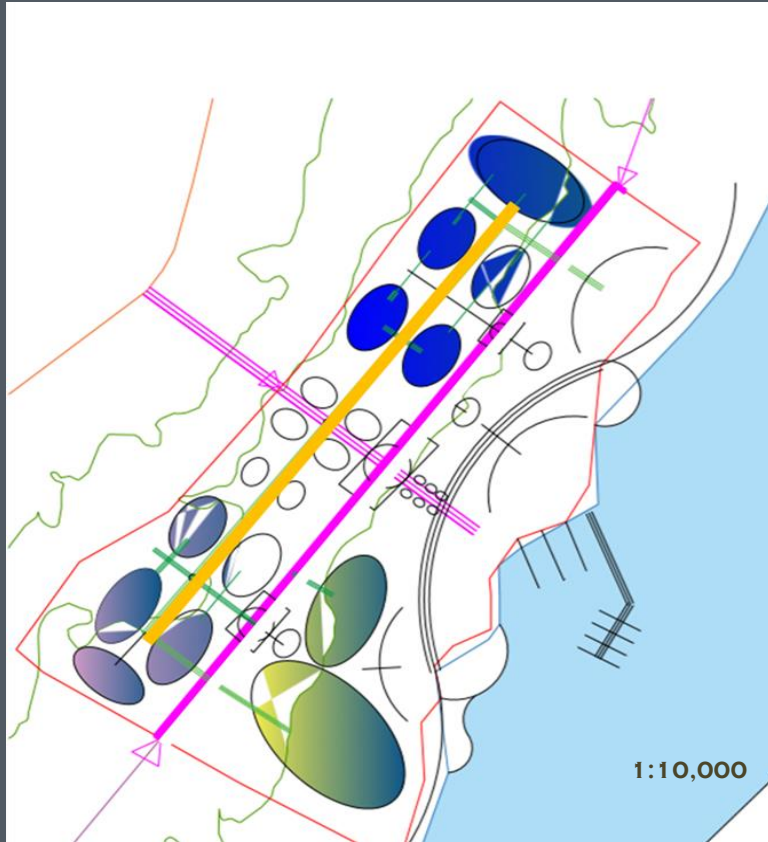
**THE PROJECT  
DEAD SEA WATER FRONT**

# The site and Jericho

The project will be both, residential and tourism orientation.



# Conceptual Design and Main Uses.



- As for the seashore, it must provide a private beach for each tourist component according to the nature of tourism activities and various practices, as well as the need to provide open beach logic for visitors to the region.
- The connection between the elements of different tourist uses should be taken into consideration by means of pedestrian paths and road networks, thus achieving ease of use of the project, as well as achieving the necessary privacy for them.

# Land use distribution and percentage

## Residential buildings

91% 5%



Public-commercial center.

85% 9%



Sport activities and gym

97% 9%



Water park

97% 3%



Hotel

93% 7%



## Educational

95% 5%



chalets

85% 15%



## Green open areas

97% 9%



Beach

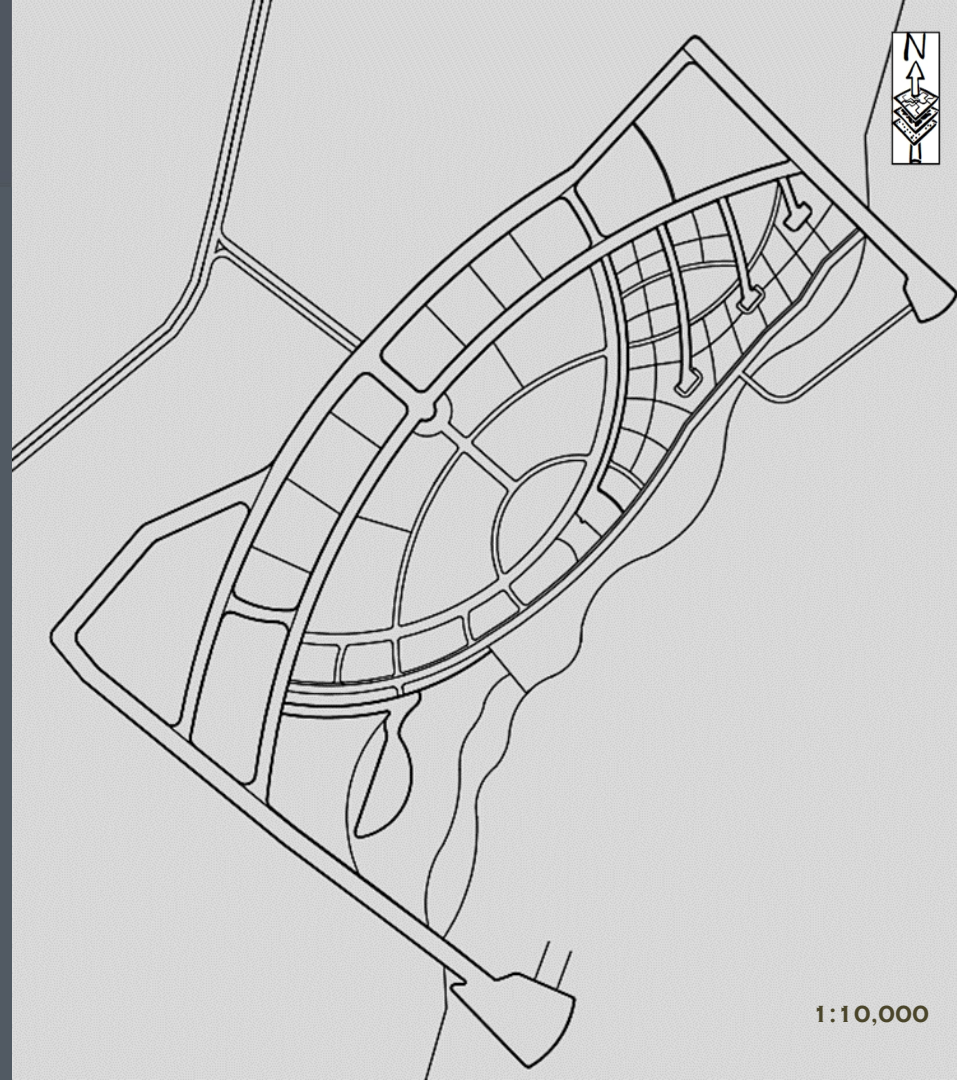
92% 8%

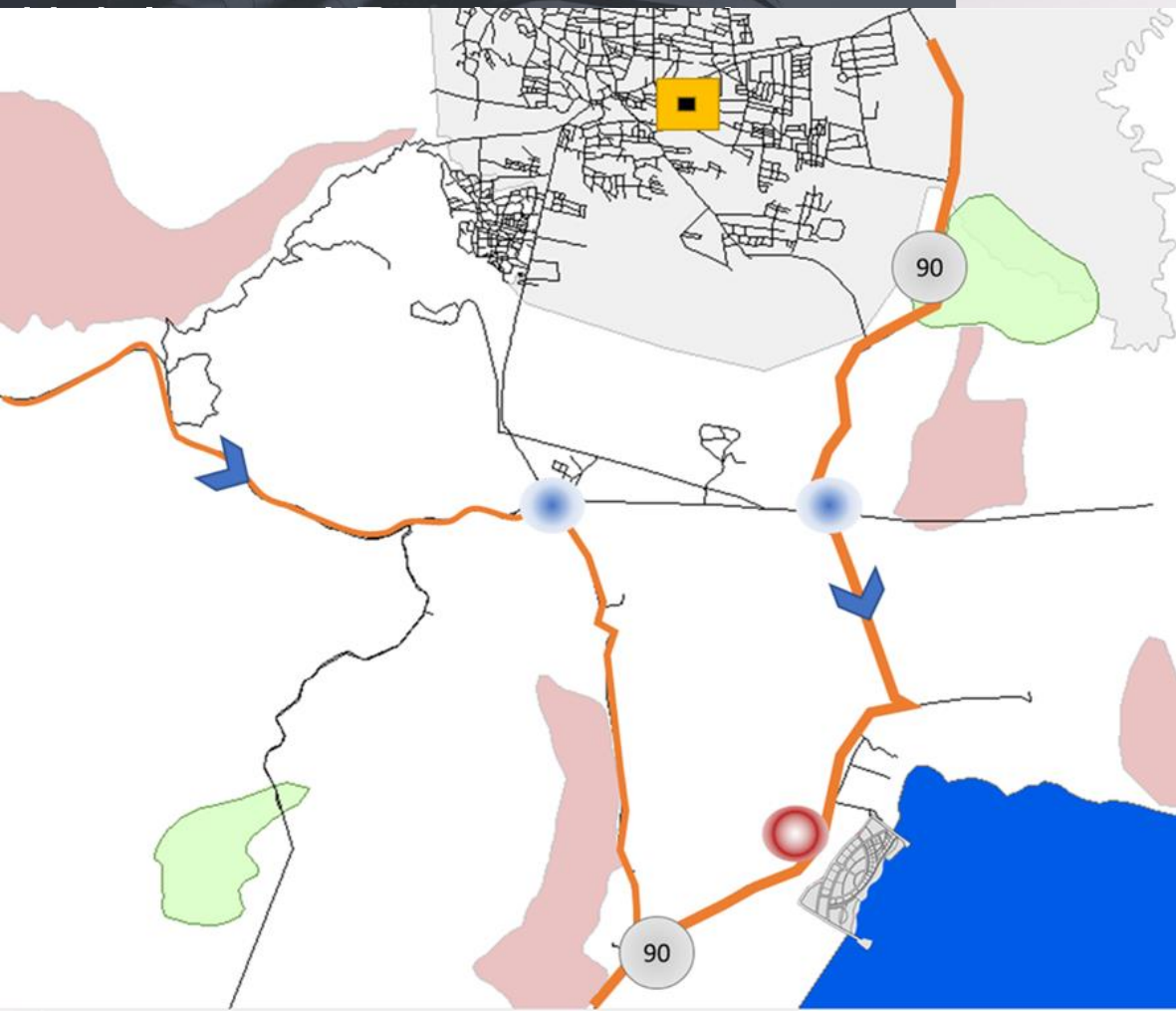



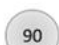


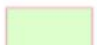
1:10,000

# Parcellation system

The following layout shows the parcellation system. In general areas weren't highly accurate in areas in the project due to the diversity of uses. But it shows the main frame of the site.




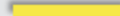




-  URBAN CENTER, JERICHO
-  90 ROAD.
-  REGIONAL NODE TO THE SITE
-  NATURAL RESERVE
-  BIODIVERSE AREAS

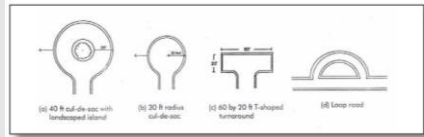




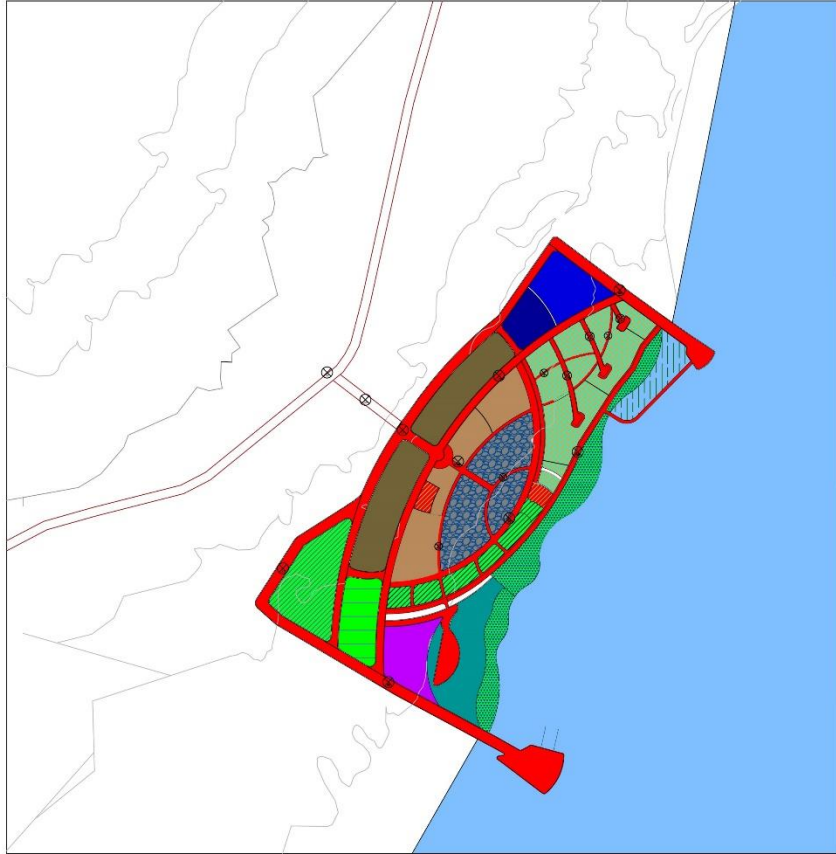
-  PRIMARY , ARTERIAL  
30M
-  SECONDARY, MINOR  
COLLECTOR  
24M
-  TERTIARY, LOCALS  
14M
-  PEDESTRIAN  
20M

 REGIONAL NODE TO THE SITE

1:10,000



# The Project's master plan



STATE OF PALESTINE دولة فلسطين  
 وزارة الحكم المحلي

## THE MASTER PLAN OF DEAD SEA WATERFRONT

### MASTER PLAN MAP KEY

MASTER PLAN AREAS TABLE			
PERCENTAGE	AREA IN DOJNM	CLASSIFICATION	SYMBOL
10.082%	95.877	RESIDENTIAL BUILDINGS	[Brown pattern]
16.7982%	162.505	GREEN AREA	[Green pattern]
3.5368%	33.600	TOURIST AREA	[Purple pattern]
6.0733%	57.697	HOTEL	[Blue pattern]
2.0972%	19.924	SCHOOL	[Dark blue pattern]
8.0886%	84.213	COMMERCIAL USE	[Blue pattern]
7.9550%	75.573	PUBLIC BUILDINGS	[Brown pattern]
10.0427%	103.006	VILLAS RESIDENCE	[Light green pattern]
0.949%	9.016	PUBLIC PARKING	[Red pattern]
3.764%	35.189	COLLEGE	[Blue pattern]
-	-	WATER SURFACE	[Blue wavy pattern]
9.709%	94.025	BEACH	[Green pattern]
75.048%	718.254	TOTAL WITHOUT STREETS	[Red pattern]
20.8563%	198.1356	STREETS	[Red pattern]
100.00%	950.00	TOTAL	[Red pattern]

### LOCATION



SCALE:  
 1:10,000

### MASTER PLAN AREAS TABLE

950.00		MASTER PLAN AREA IN DOJNM	
PERCENTAGE	AREA IN DOJNM	CLASSIFICATION	SYMBOL
10.082%	95.877	RESIDENTIAL BUILDINGS	[Brown pattern]
16.7982%	162.505	GREEN AREA	[Green pattern]
3.5368%	33.600	TOURIST AREA	[Purple pattern]
6.0733%	57.697	HOTEL	[Blue pattern]
2.0972%	19.924	SCHOOL	[Dark blue pattern]
8.0886%	84.213	COMMERCIAL USE	[Blue pattern]
7.9550%	75.573	PUBLIC BUILDINGS	[Brown pattern]
10.0427%	103.006	VILLAS RESIDENCE	[Light green pattern]
0.949%	9.016	PUBLIC PARKING	[Red pattern]
3.764%	35.189	COLLEGE	[Blue pattern]
-	-	WATER SURFACE	[Blue wavy pattern]
5.7569%	86.213	BEACH	[Green pattern]
79.1456%	751.9234	TOTAL WITHOUT STREETS	[Red pattern]
20.8563%	198.1356	STREETS	[Red pattern]
100.00%	950.00	TOTAL	[Red pattern]

# Site plan

The final layout of the project, showing each zone designed and planned according to the international indicators



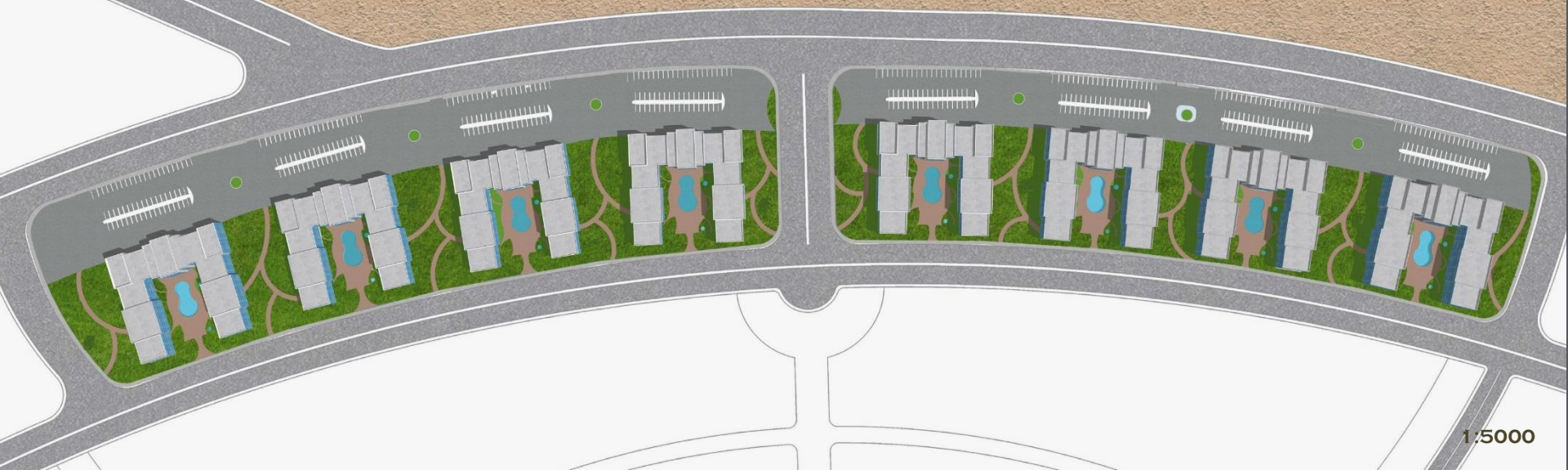
1:10,000

# Site plan

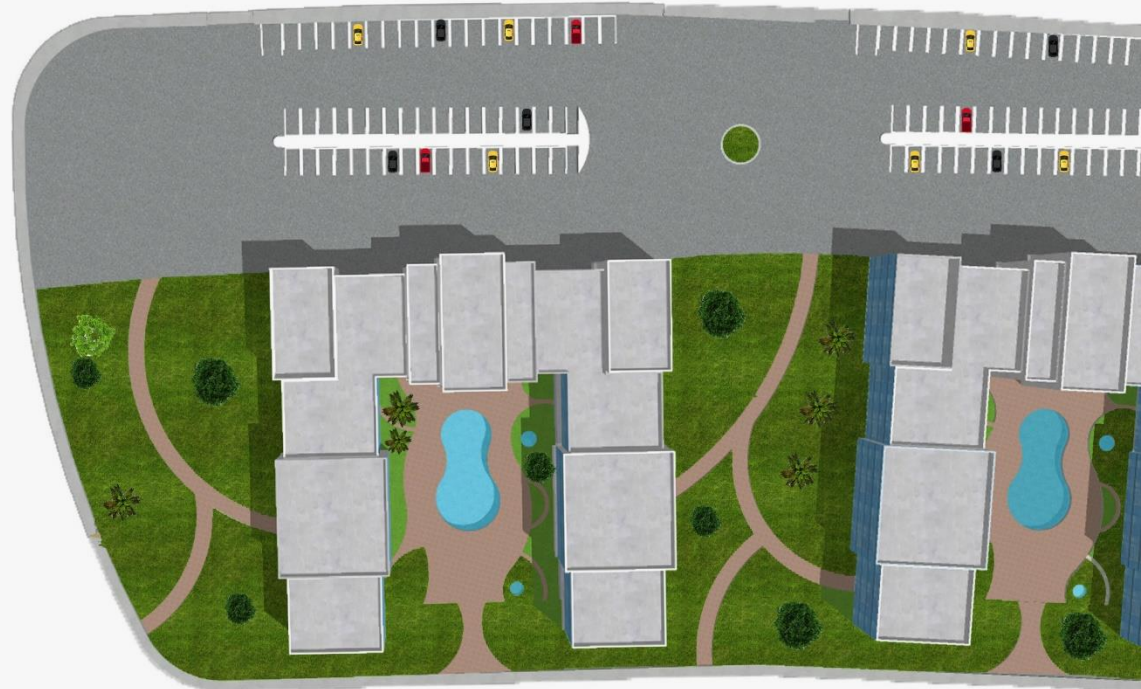
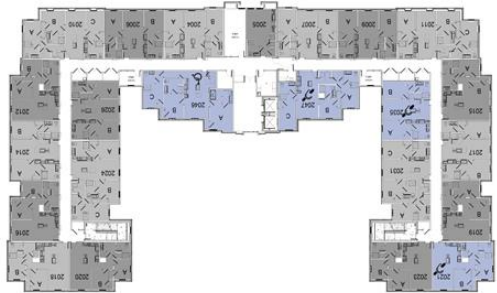


1:10,000

# Apartments buildings

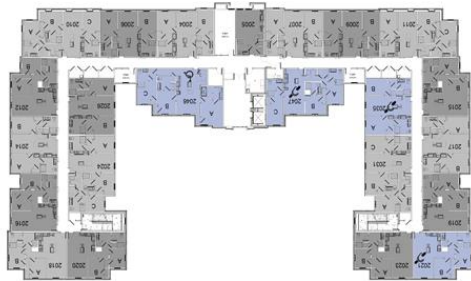


# Apartments building

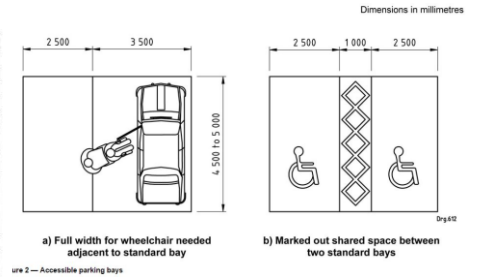
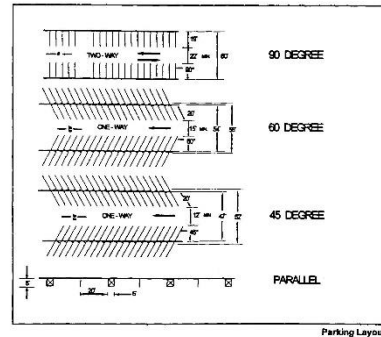




Apartments buildings  
 Area: 3000 m<sup>2</sup>  
 Height: 9 m  
 Capacity: 20 apartment per floor



Back parking lot, private for each building  
 Capacity: 60 parking lot per unit



ure 2 — Accessible parking bays

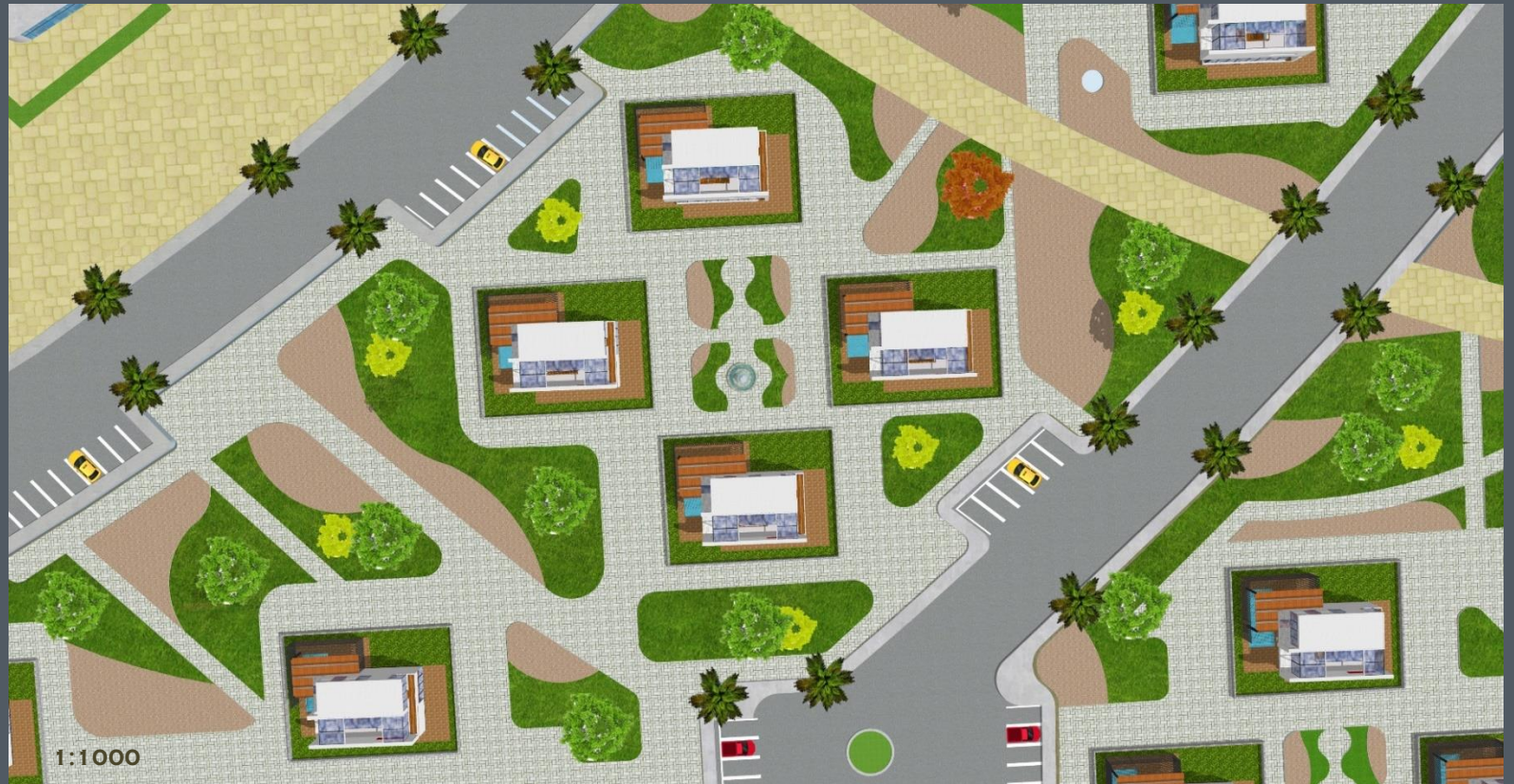
# Single houses zone







# Single houses zone



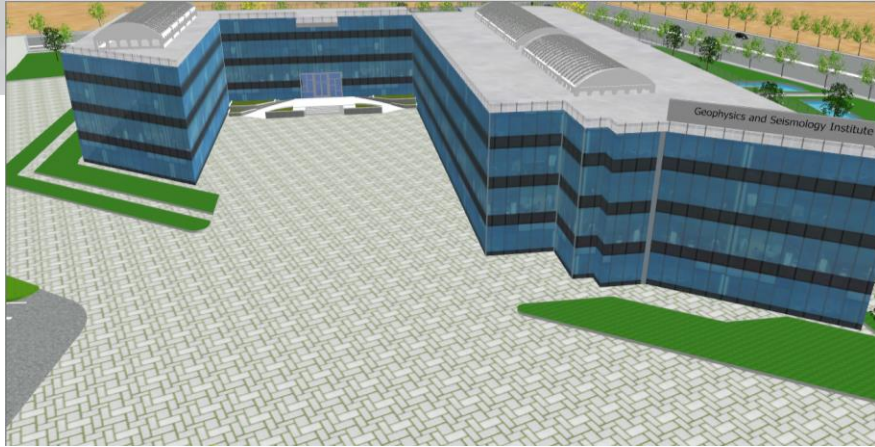


Single houses and villas  
Area: 150 m<sup>2</sup>  
Height: 6 m

# Educational Facilities



1:1000



Geophysics college building  
Area: 3800 m<sup>2</sup>  
Height: 12 m



Elementary school  
Area: 2500 m<sup>2</sup>  
Height: 9m

# Public Center





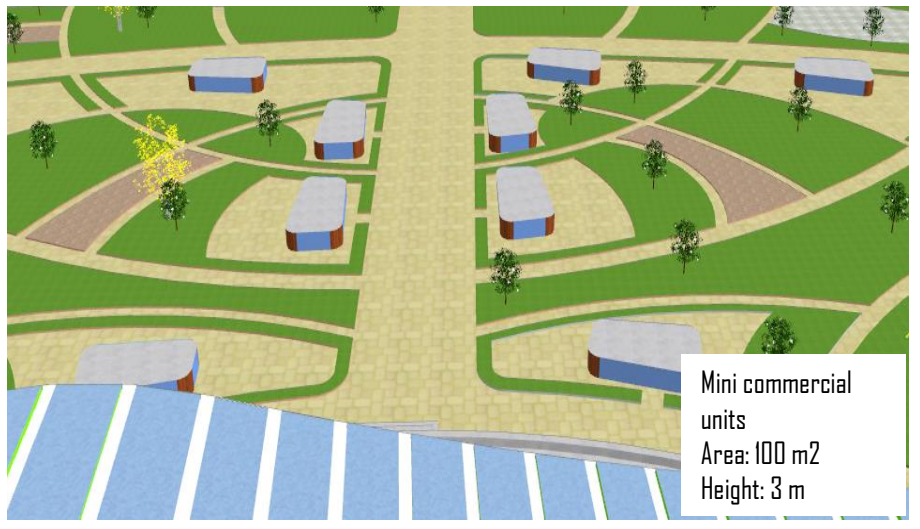
Services center  
Area: 2000 m<sup>2</sup>  
Height: 6 m



Commercial units  
Area: 700 m<sup>2</sup>  
Height: 6 m



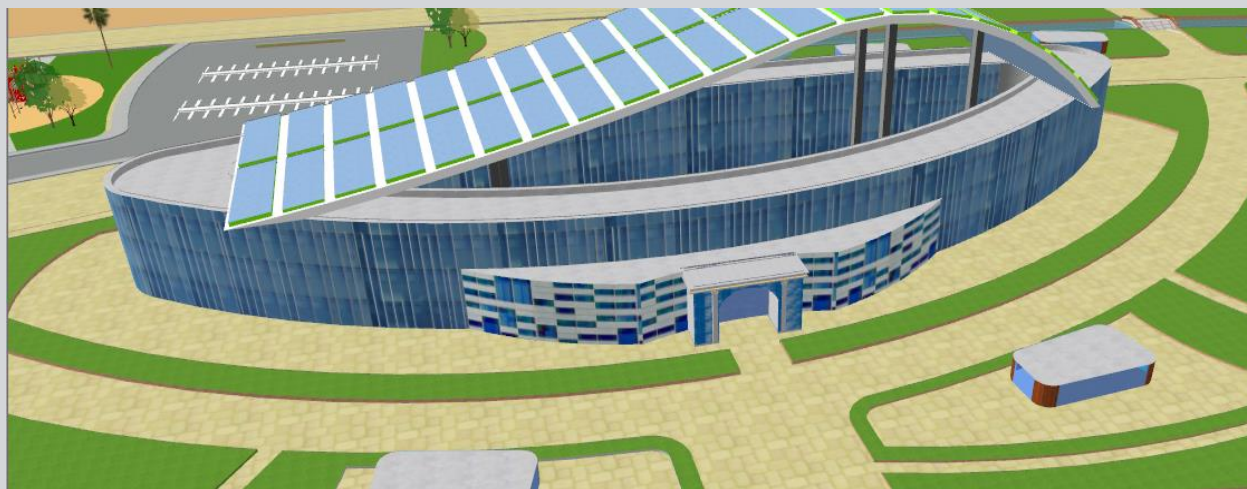
Health center  
Area: 1800 m<sup>2</sup>  
Height: 6 m



Mini commercial  
units  
Area: 100 m<sup>2</sup>  
Height: 3 m



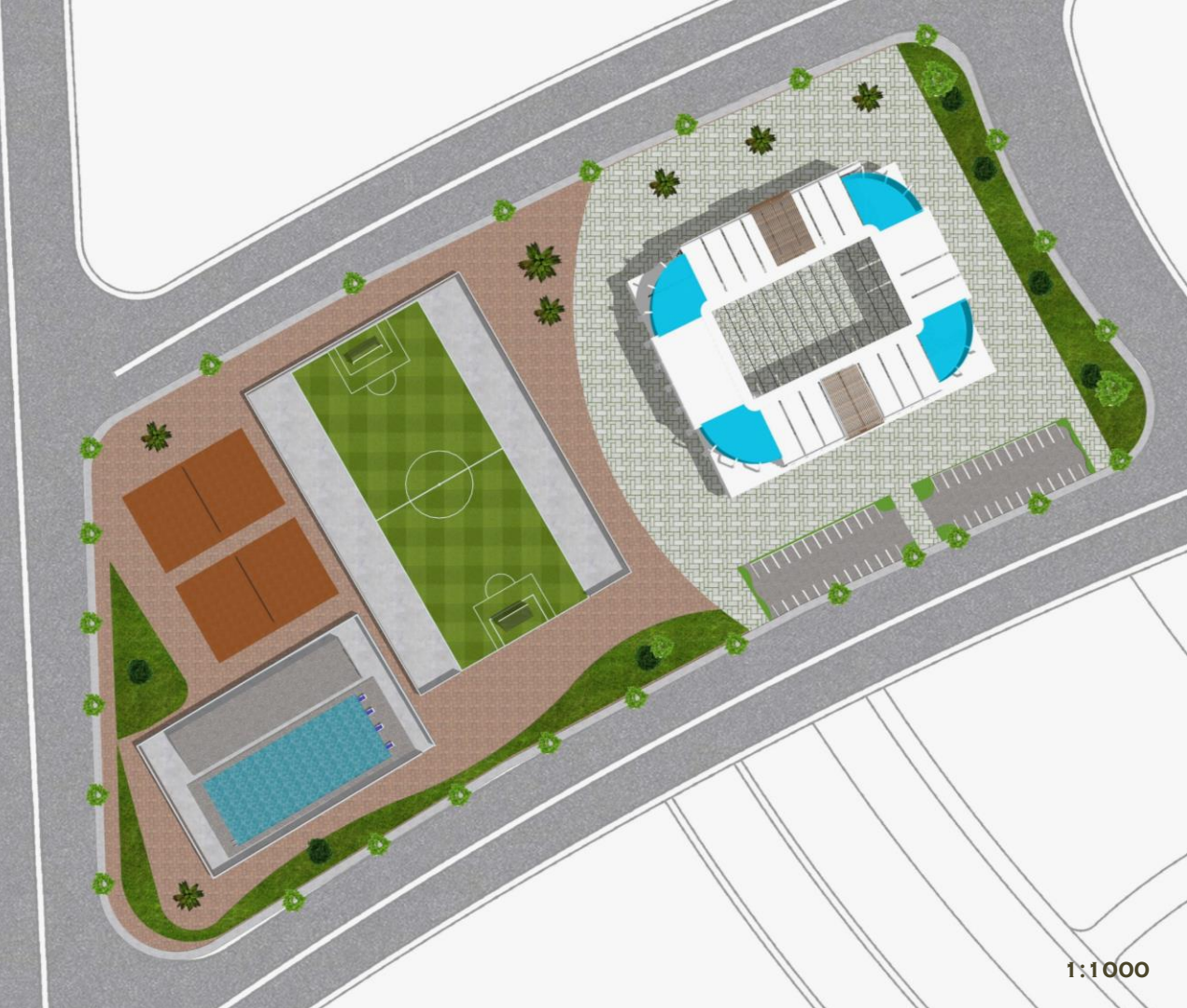
Administrative building, (offices,  
Clinique and social meetings halls)  
Area: 3800 m<sup>2</sup>  
Height: 6 m



Administrative building, (offices,  
Clinique and private stores)  
Area: 5000 m<sup>2</sup>  
Height: 6 m



# Gym and Sport Area





Gym and sport center  
Area: 5000 m<sup>2</sup>  
Height: 6 m



Sport fields and swimming pool

# Green Adventurous Hill, (green open space and entertainment)



1:1000



### Green Adventurous Hill, (green open space and entertainment )

Main function:

- increases the open green spaces ratio.
- Saves the project's privacy

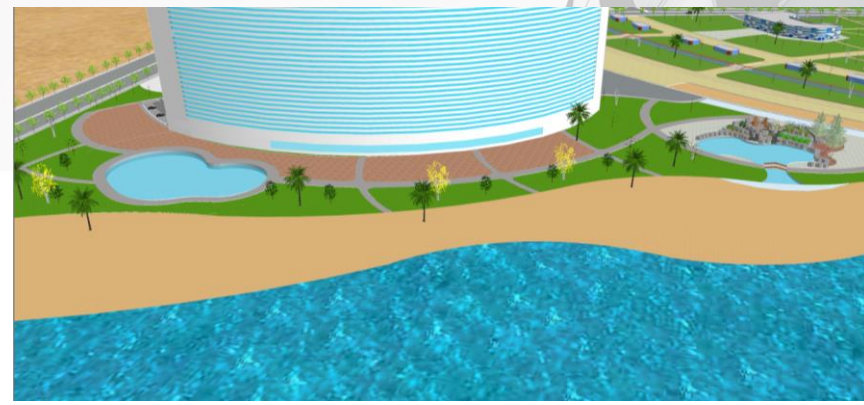
# Hotel Area



1:1000



The hotel building  
Area: 4300 m<sup>2</sup>  
Height: 12 floors, 36m



# Water Park



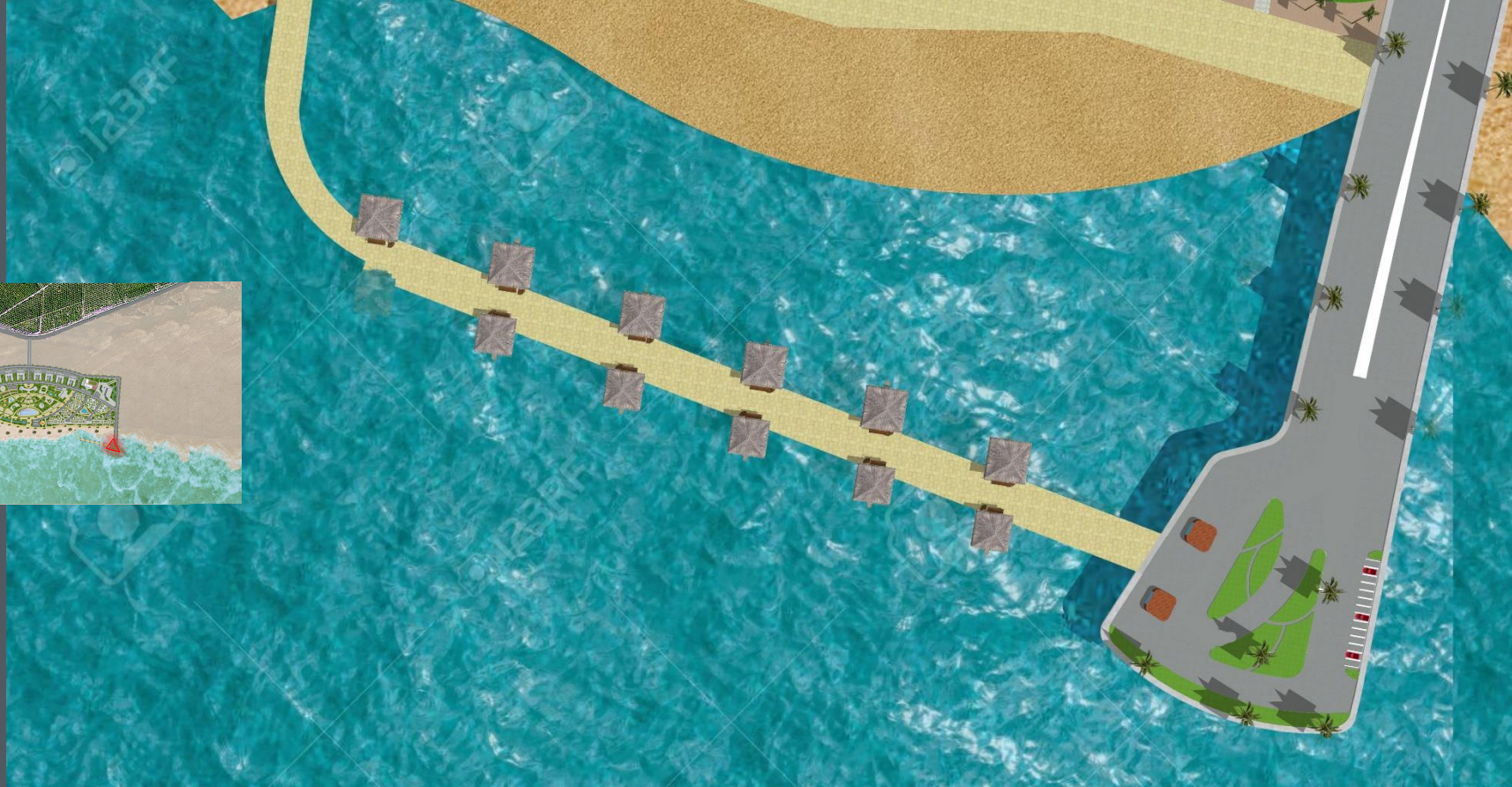


Water park





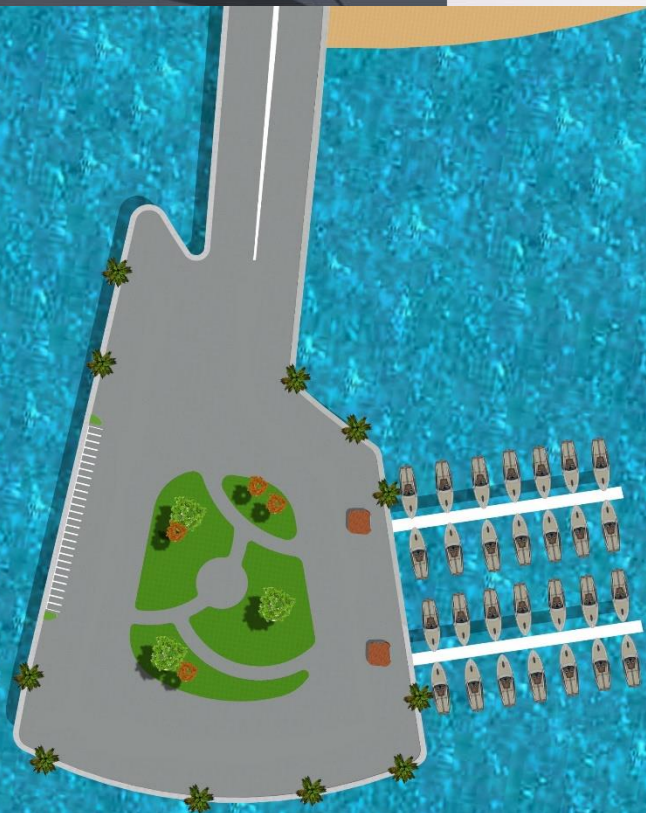
# Floating Chalets

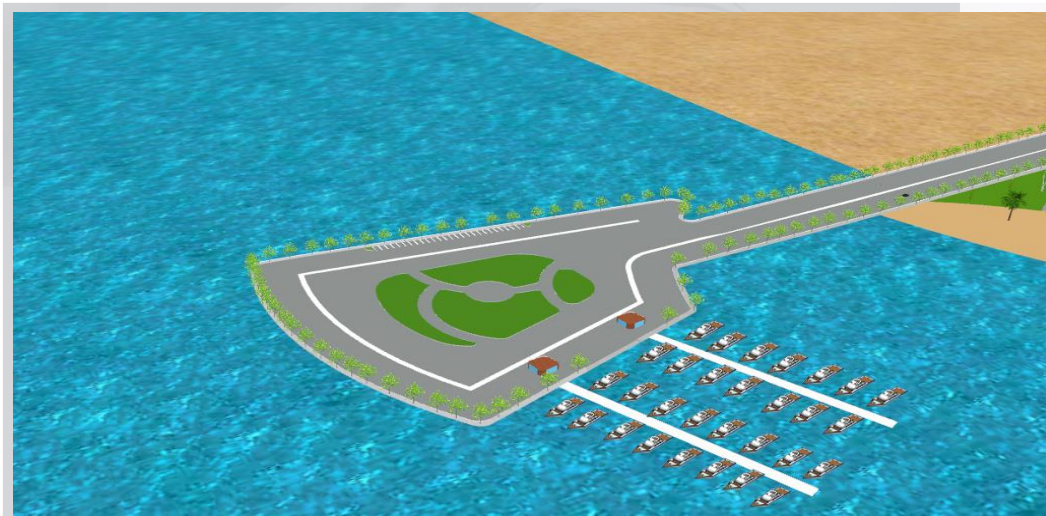




Floating chalets  
Area: 60 m<sup>2</sup>  
Height: 3 m

# Boats Port





Floating chalets  
Area: 60 m<sup>2</sup>  
Height: 3 m







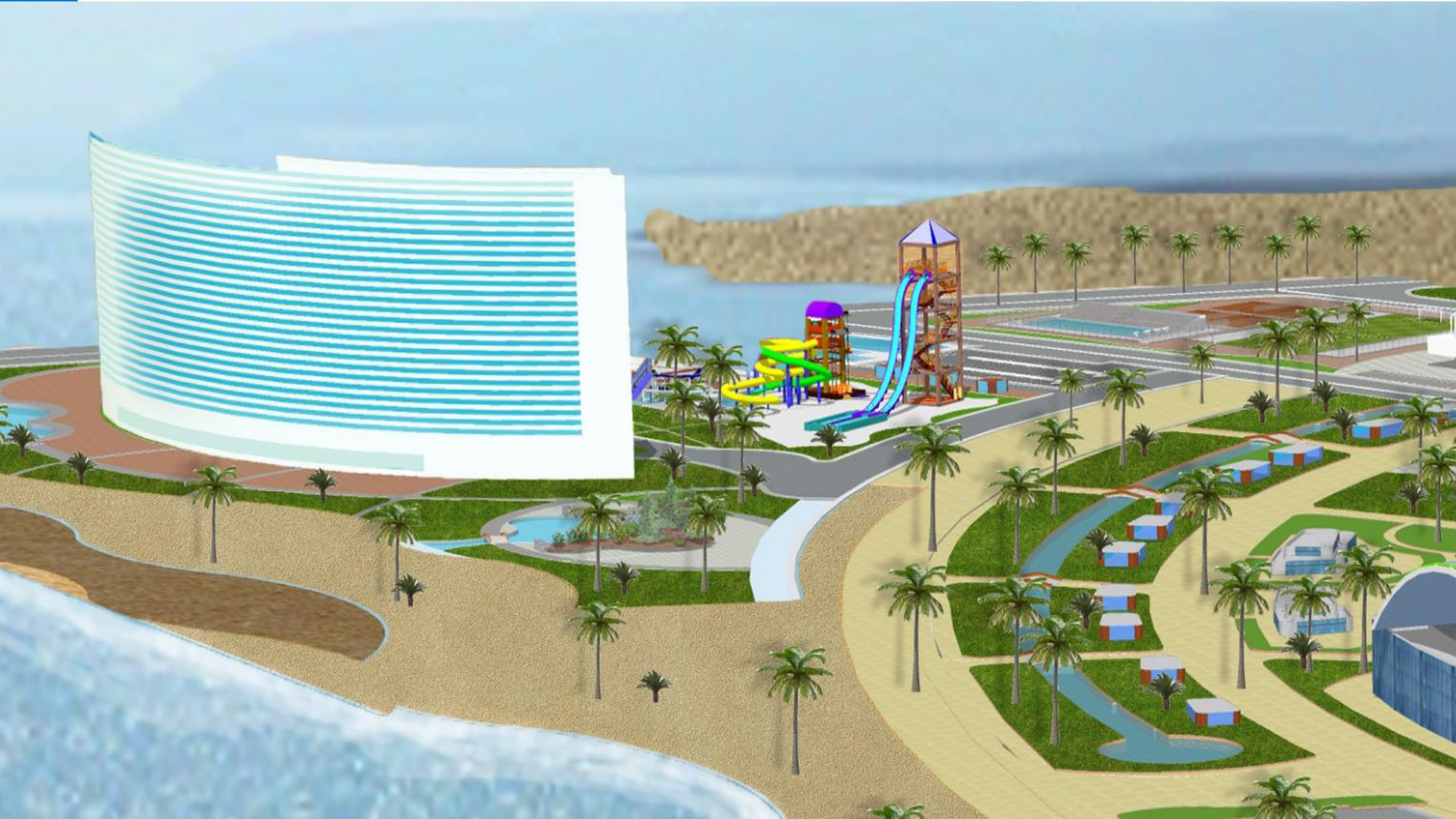




























# Assessment

- The design method worked to pay attention to increasing the water bodies inside the village in the form of lakes to increase the beaches of the village, while avoiding the defects resulting from the stagnation of water, because the architectural and technical design did not take into account from the outset the necessary foundations and technical specifications.
- It is suitable for the hierarchy of buildings, so that all units have a sea view.
- Refrain from the methods of residential blocks in designing buildings for residence units, as they reflect the methods that give a feeling of boredom and novel and that do not achieve the element of attraction and due tourist creativity.
- Attention to pergolas and garden dividers that achieve privacy in the use of different places and to be beautiful.
- The need to pay attention to green spaces and agriculture as one of the most important components of the foundations for site coordination.
- The architectural character depends on using the environment component and developing it in a way that suits the architecture of coastal areas.