

تخطيط مركز حضري

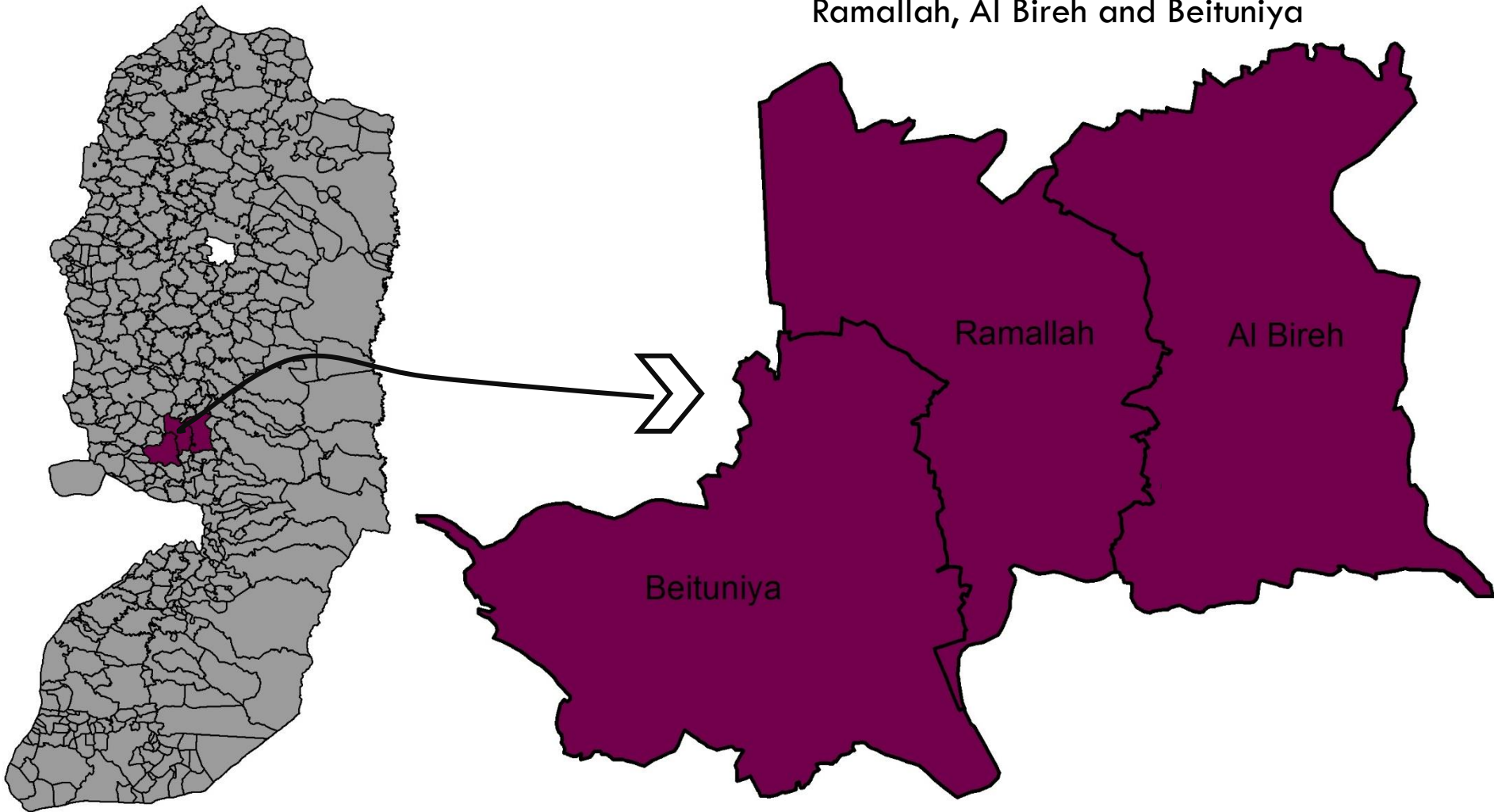
Civic Center – Boulevard -

For Metropolitan - Ramallah, Albireh and Beituniya -

المحتويات:

- تعريف عام بالمنطقة
- اهمية و مبررات المشروع
- تحليل اقليمي
- تحليل محلي
- تحليل على مستوى الموقع
- حدود المشروع
- المخطط الهيكلي
- المخطط التفصيلي

Metropolitan Ramallah, Al Bireh and Beituniya

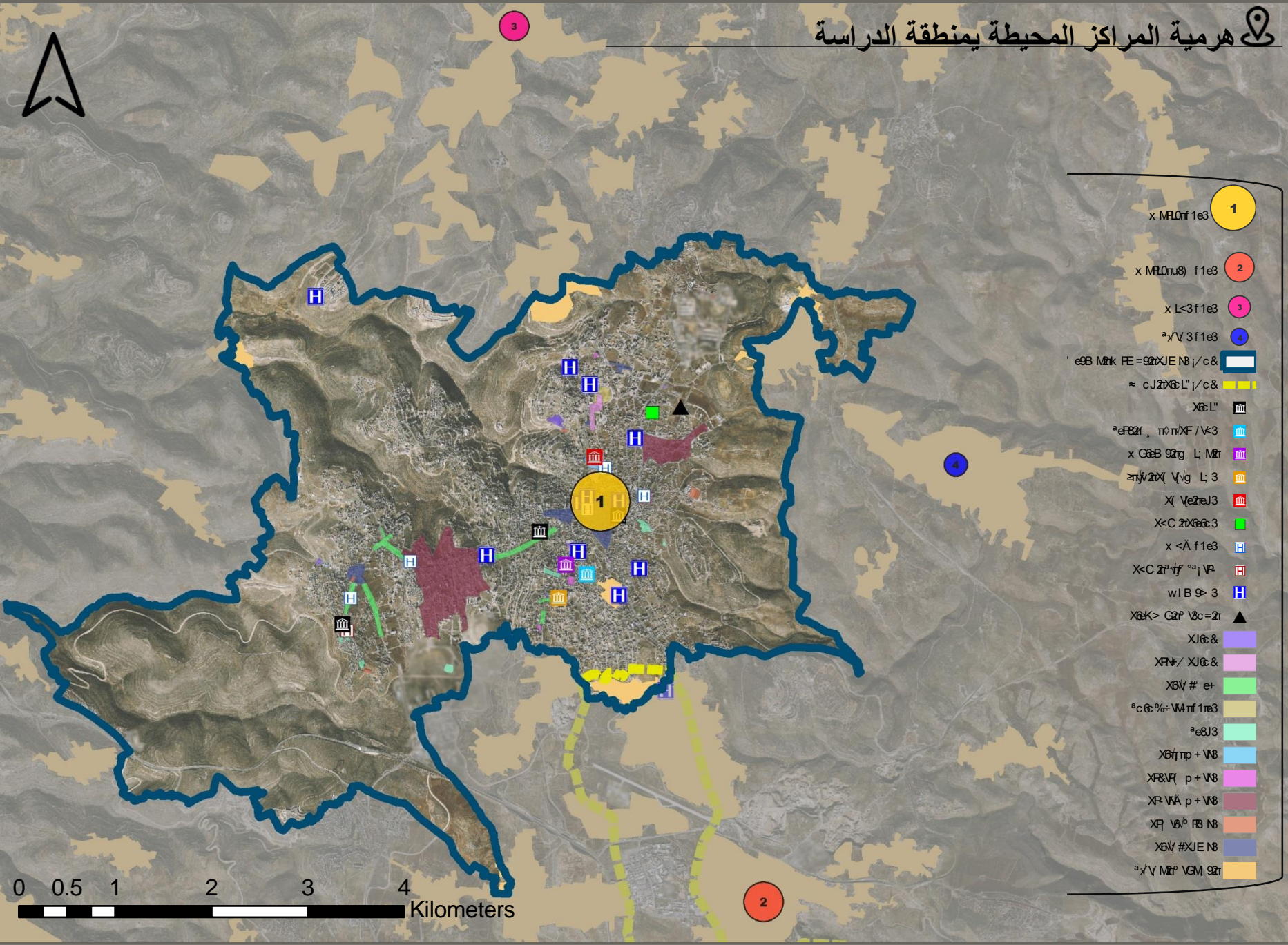


اهمية و مبررات المشروع:

- مساندة مركز المدينة الحالي
- دعم توجه الادارة الحضرية نحو اللامركزية
- توفير أنشطة بعيد عن وسط المدينة
- المساهمة في انماء الاقتصاد الفلسطيني
- خفض معدلات الرحلات المرورية الى وسط المدينة
- تحسين البيئة الحضرية بشكل عام من خلال التخطيط لهذا المركز

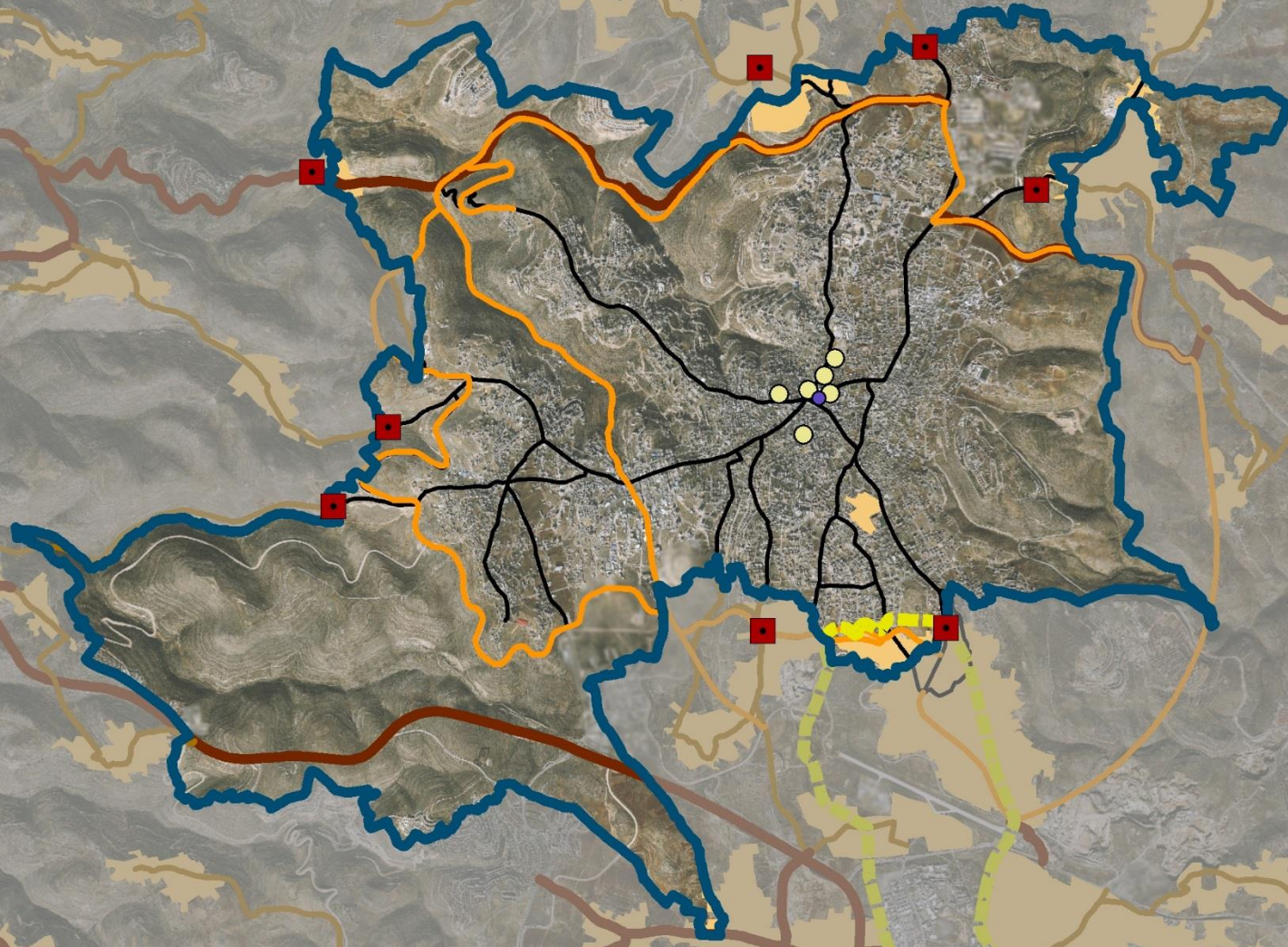
التحليل الاقليمي

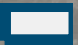




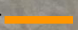
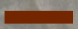



هرمية المراكز المحيطة بمنطقة الدراسة



- 1 x ML0rf 1e3
- 2 x ML0nu8) f1e3
- 3 x L<3f1e3
- 4 a^x\√ 3f1e3
- eSB Mzik FE = 92xJEN 8 / c&
- c J2xGc L" / c&
- XGc L" [m]
- a eFB2f , n0 niXF / V<3 [m]
- x G6B 92tg L; M2t [m]
- 2njv 22X V\g L; 3 [m]
- X\ V22eJ3 [m]
- X<C 2xG6c:3 [m]
- x <A f1e3 [m]
- X<C 2f v^ a; j VP [m]
- wIB 9> 3 [m]
- XG6K> G2f V3c=2t [m]
- XJ6&& [m]
- XFV/ XJ6&& [m]
- X6V # et [m]
- a c6%e VMrf 1e3 [m]
- a e8J3 [m]
- X6ijtp + V8 [m]
- XF8Vq p + V8 [m]
- XP VÄ p + V8 [m]
- XF V6^ FB NB [m]
- X6V #XJE NB [m]
- a^x\ V M2f VGM 92t [m]

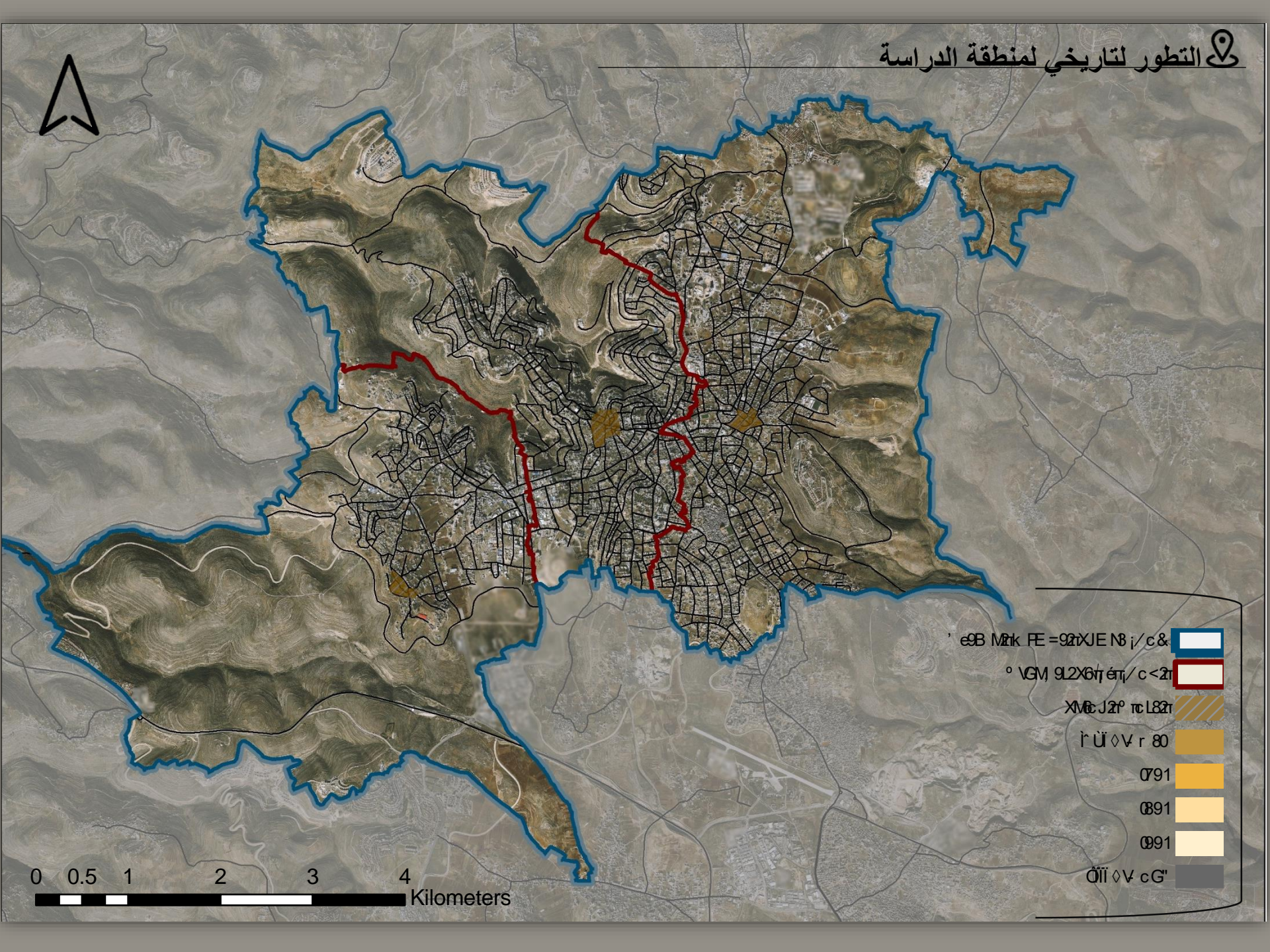
0 0.5 1 2 3 4 Kilometers

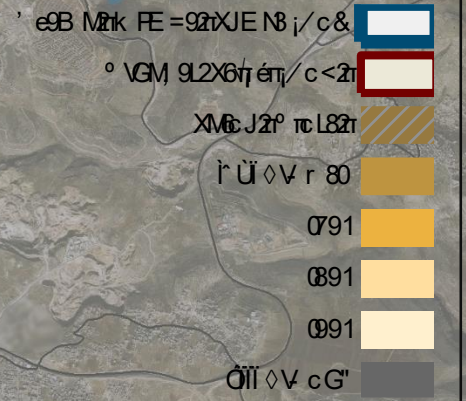
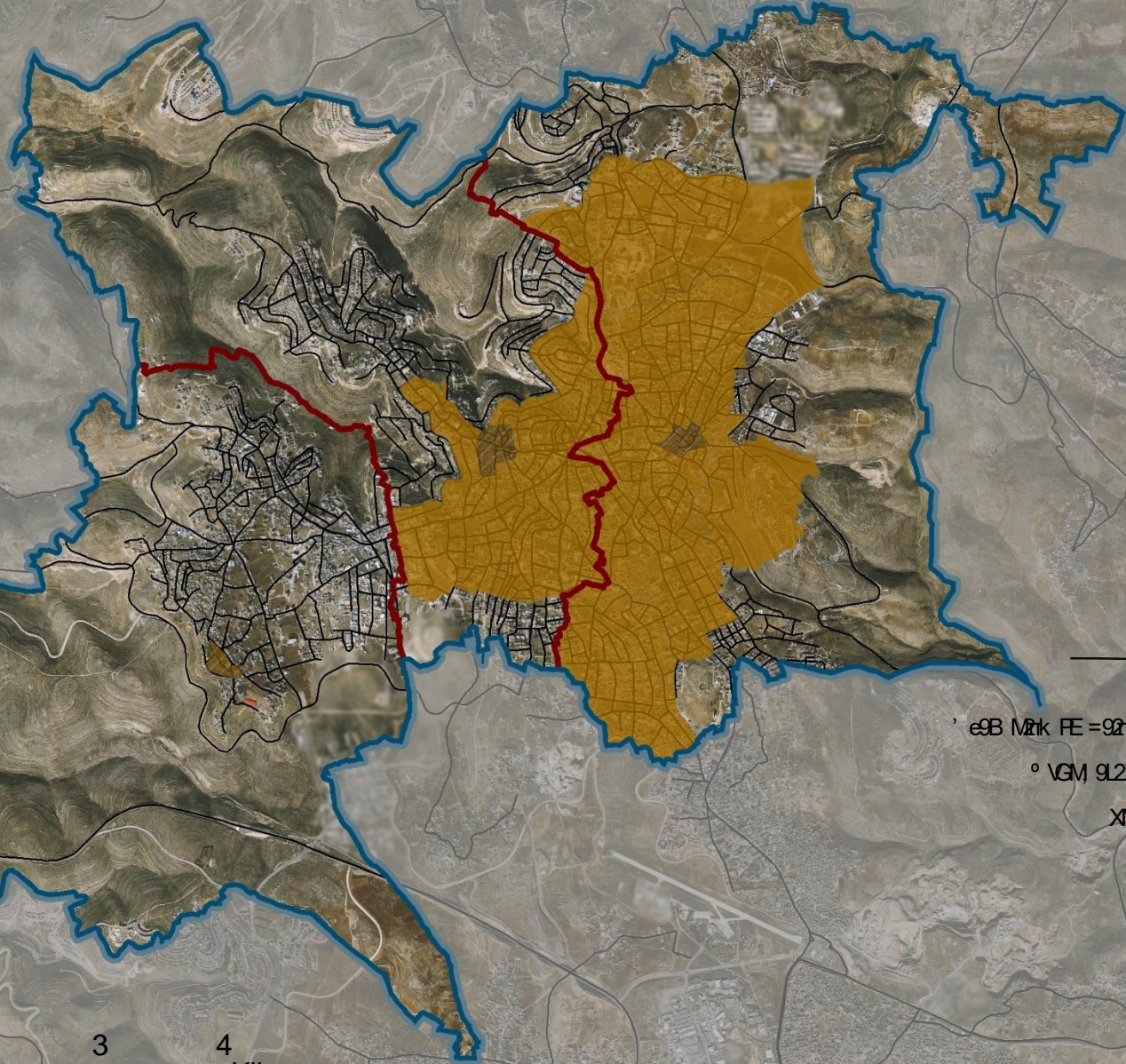


-  $\text{e9B M2k FE=92xJE NB j/c\&}$
-  $\text{XP> R\>2r ' \pi c M2r}$
- x %\#2++ JN2+° VGM, 3**
-  $x > 1\#XE < 3$
-  $\text{XP> R\>x > 1\#XE < 3}$
-  $\approx c J2\>L" j/c\&$
-  < e(\pi 2p @E 2r
-  $x \text{ MFL0rx l 6/}$
-  $x L < 3$
-  < eD \&
-  $\text{a\>V M2r° VGM, 92r}$

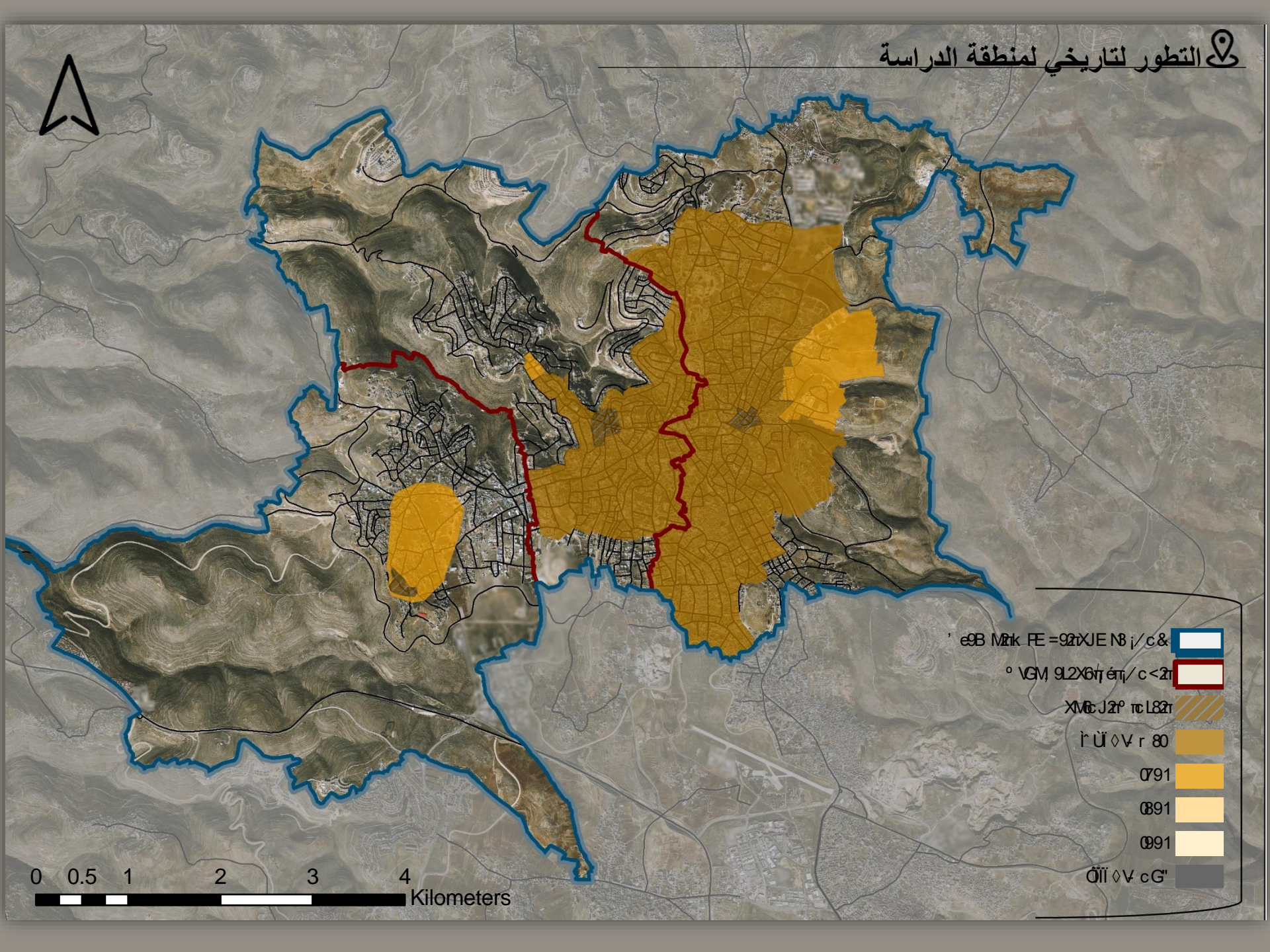


التحليل المحلي

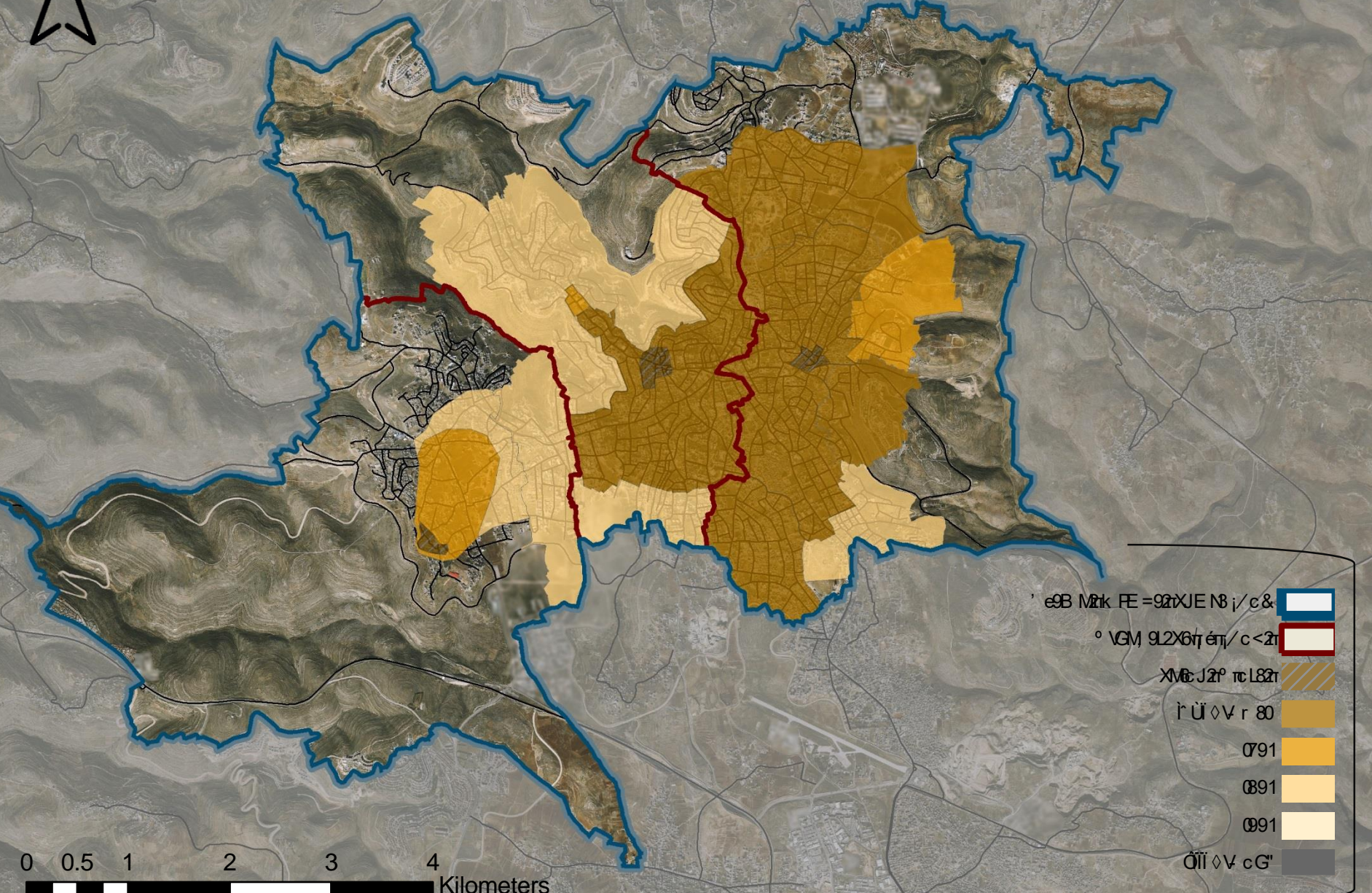




0 0.5 1 2 3 4 Kilometers

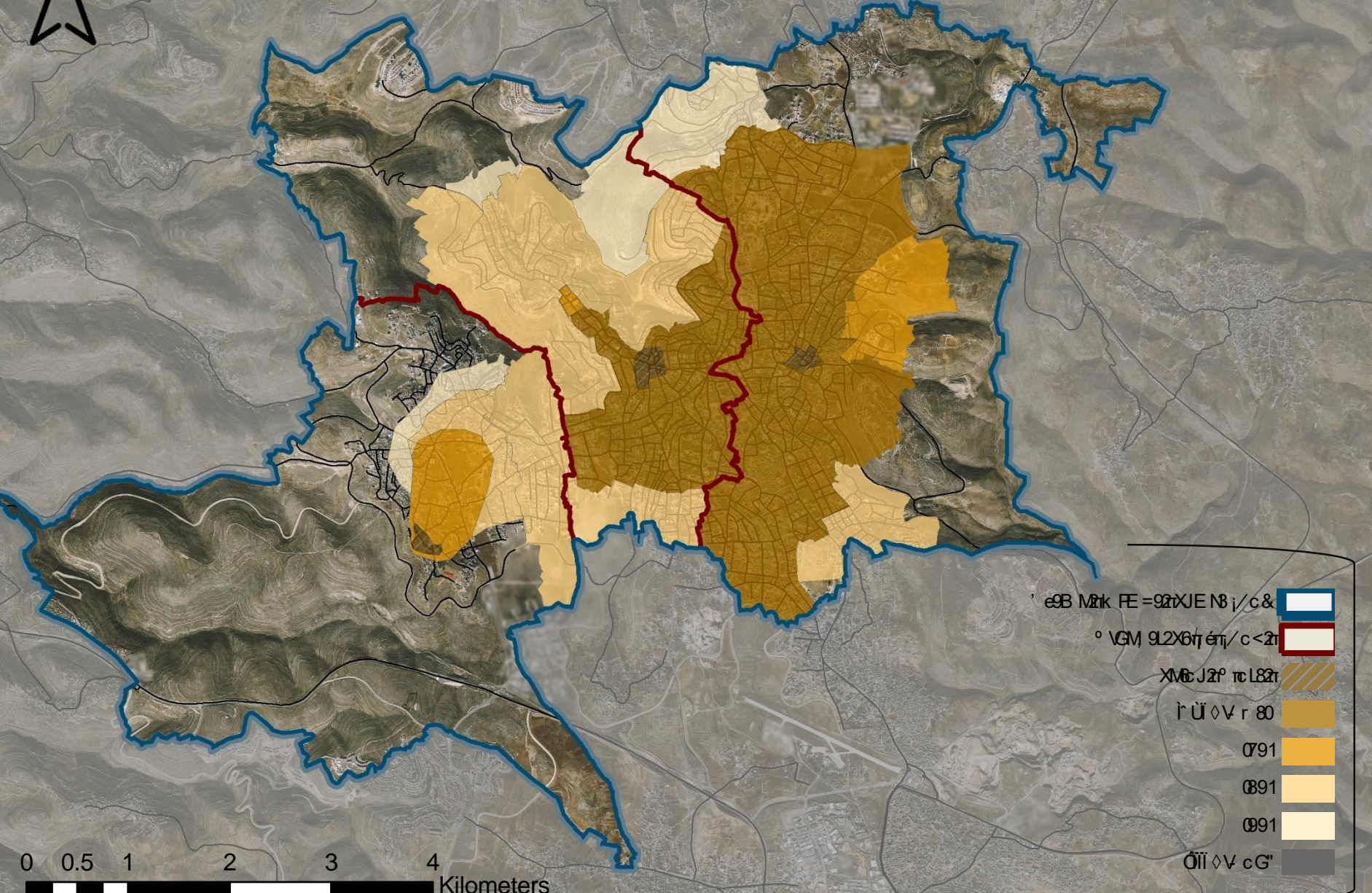


0 0.5 1 2 3 4 Kilometers



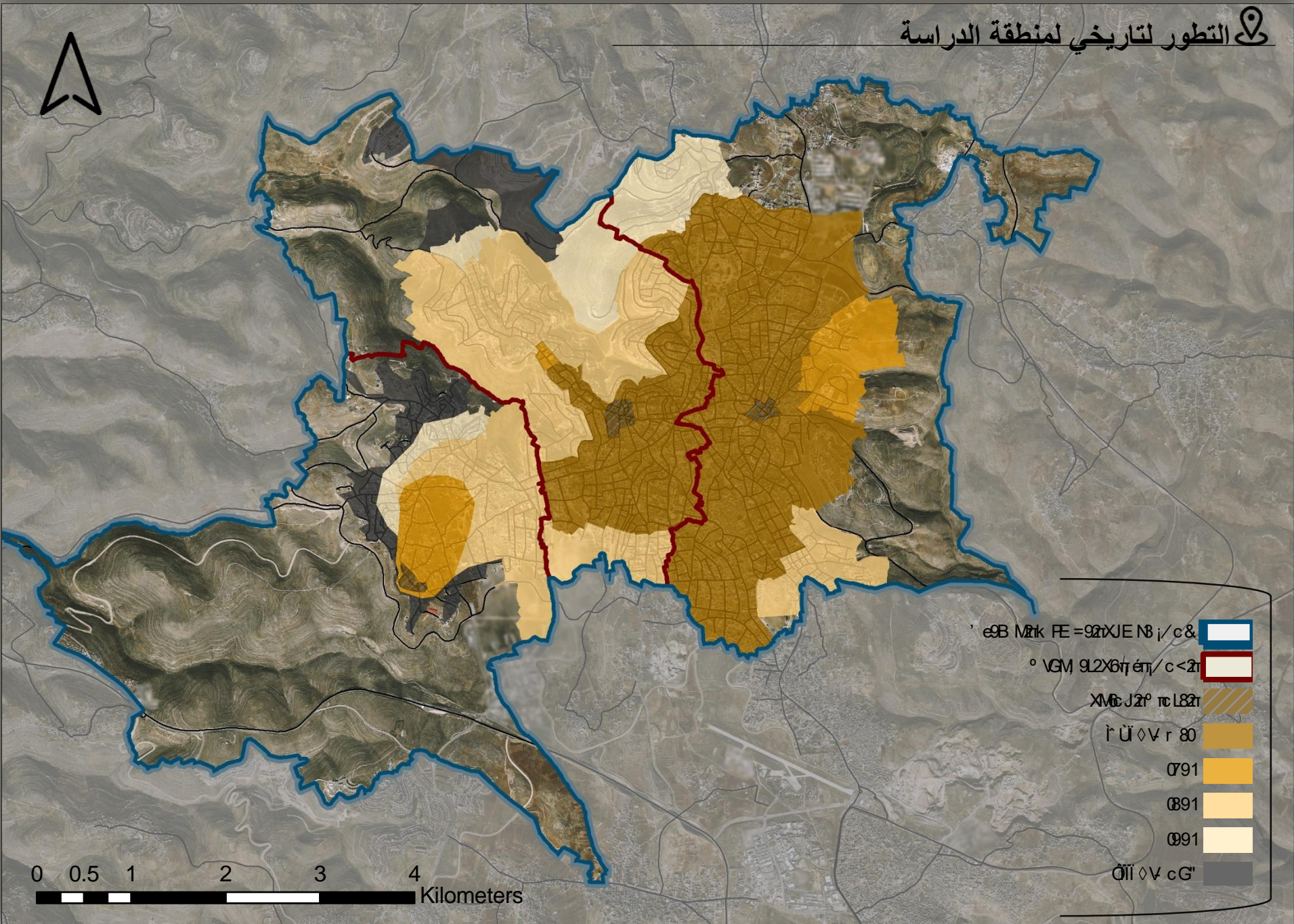
-
-
- ▨
-
-
-
-
-

0 0.5 1 2 3 4 Kilometers



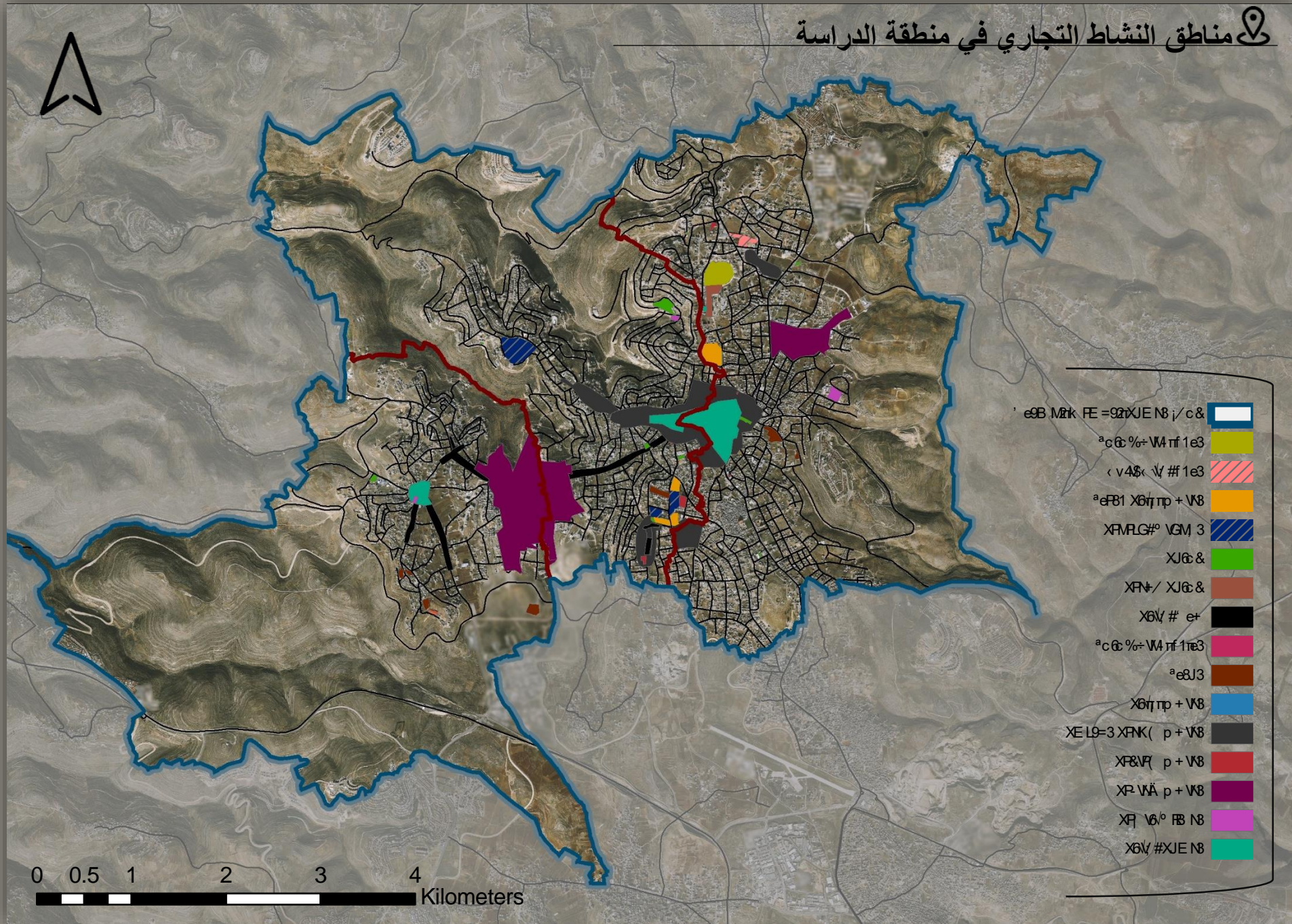
0 0.5 1 2 3 4 Kilometers

- (Blue outline)
- (Red outline)
- ▨ (Hatched pattern)
- (Dark orange)
- (Medium orange)
- (Light orange)
- (Yellow)
- (Grey)



0 0.5 1 2 3 4 Kilometers

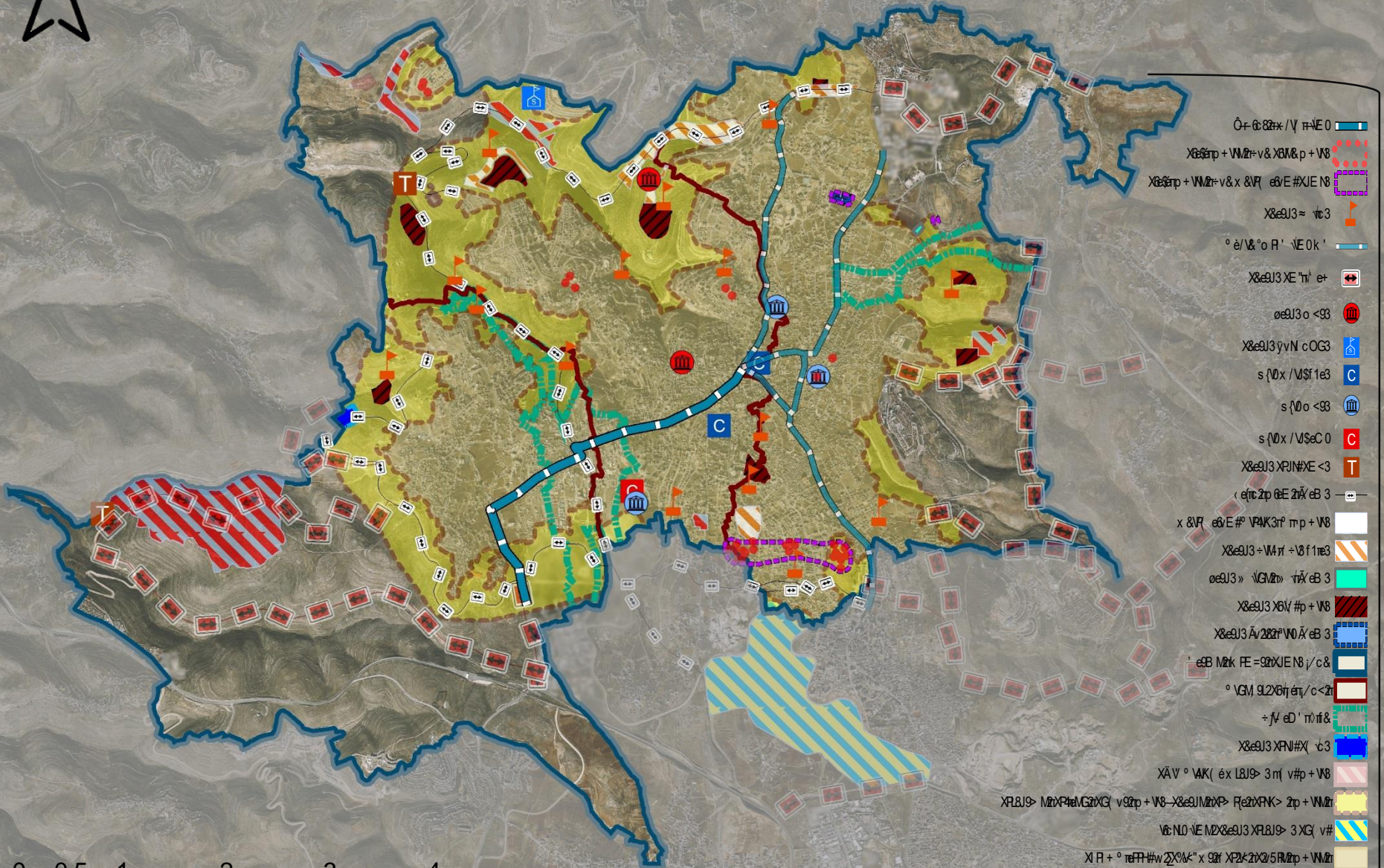
مناطق النشاط التجاري في منطقة الدراسة



- e9B Mzrk FE =92XJEN8 j/c&
- ^c & %± V4 nf 1e3
- < v4\$< \# # 1e3
- ^eF81 X6rrp + V8
- XFMVG#° VGM 3
- XJ&&
- XPN+ / XJ&&
- X6V # e+
- ^c & %± V4 nf 1e3
- ^e8J3
- X6rrp + V8
- XE L9=3 XFNK(p + V8
- XF&Vr p + V8
- XP WÄ p + V8
- Xrj V6° FB N8
- X6V #XJEN8

0 0.5 1 2 3 4 Kilometers

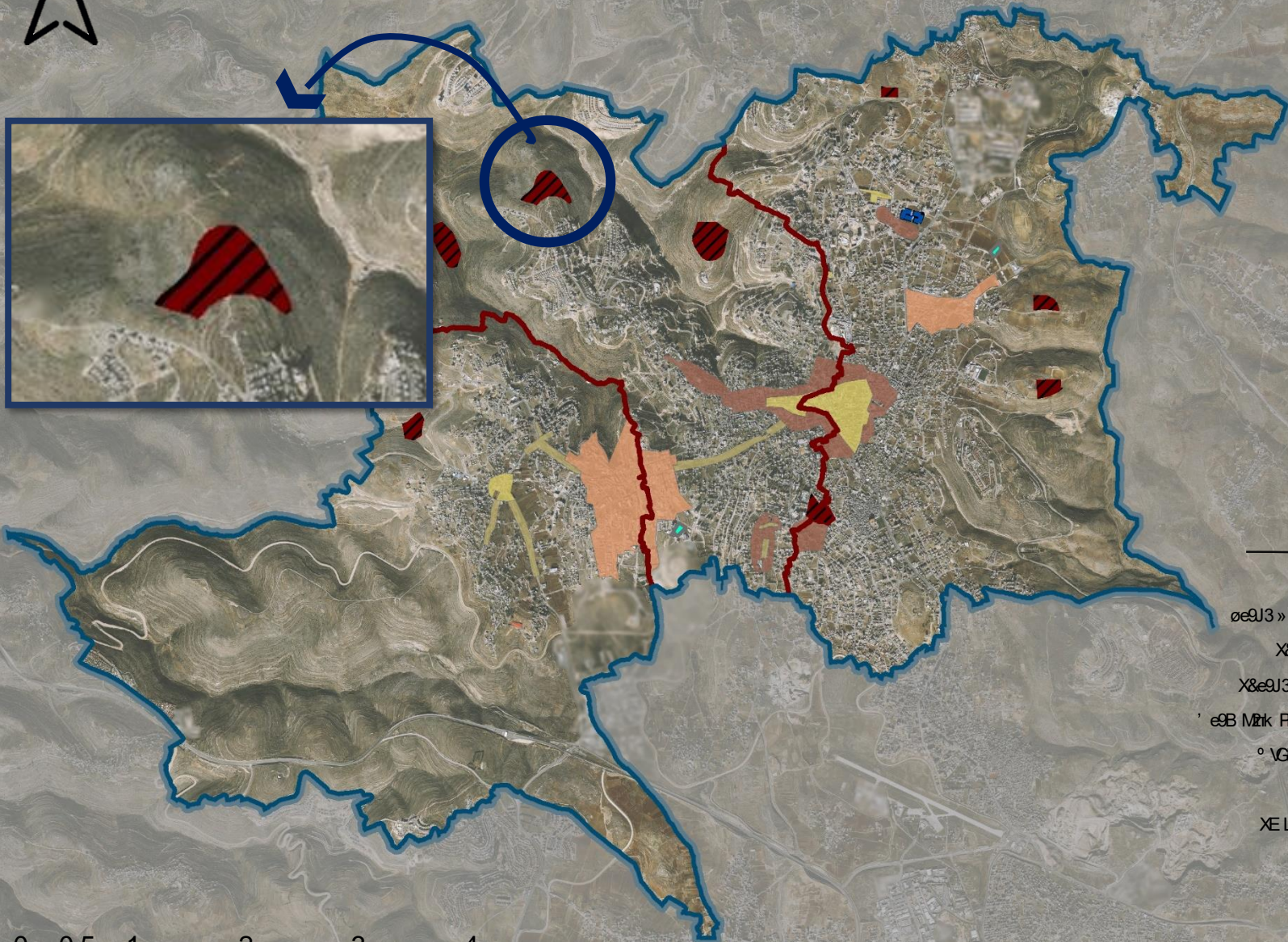
المناطق المقترحة حسب مخطط الاطار التوجيهي



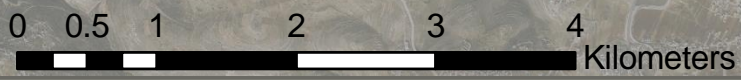
- ٥ ٤٣٣٠ / √ ٣-٤ 0
- X&E&P + VM&P = v& X&M&P + V&B
- X&E&P + VM&P = v& X &P e&V E #XJ&E N&B
- X&E&U3 ≈ vt 3
- ° e / V&° o R ' \E 0 k '
- X&E&U3 XE 'n' e t
- e&U3 o < 93
- X&E&U3 yvN c O G 3
- s { 0 x / V&S f 1 e 3
- s { 0 o < 93
- s { 0 x / V&S e C 0
- X&E&U3 X P J N # X E < 3
- (e t p ٥ e 2 ٣ e 3
- x &P e&V E # V P A K 3 r f m p + V&B
- X&E&U3 + VM&P = V&B f 1 e 3
- e&U3 » \G M ٣» ٣ ٣ e 3
- X&E&U3 X&V # p + V&B
- X&E&U3 A v 2 3 2 P V 0 A e 3
- ' e B M&K F E = 9 2 ٣ X J E N 3 / c &
- ° V G M 9 2 ٣ ٥ ٣ e t p / c < 2
- = f v e D ' ٣ ٣ ٣ e &
- X&E&U3 X P J N # X \ c 3
- X A V ° V A K (e x L B J ٥ 3 m f v # p + V&B
- X P L B J ٥ M&P 4 e M G 2 ٣ X Q \ v 9 2 p + V&B - X&E&U3 M&P > P e 2 ٣ P A K > 2 p + VM&P
- V&B N O - V E M 2 X&E&U3 X P L B J ٥ 3 X Q \ v #
- X I P + ° ٣ e P P # w 2 X % k " x 9 2 ٣ X P 2 k 2 ٣ 2 ٣ 5 R M 2 p + VM&P



المناطق المقترحة حسب مخطط الاطار التوجيهي

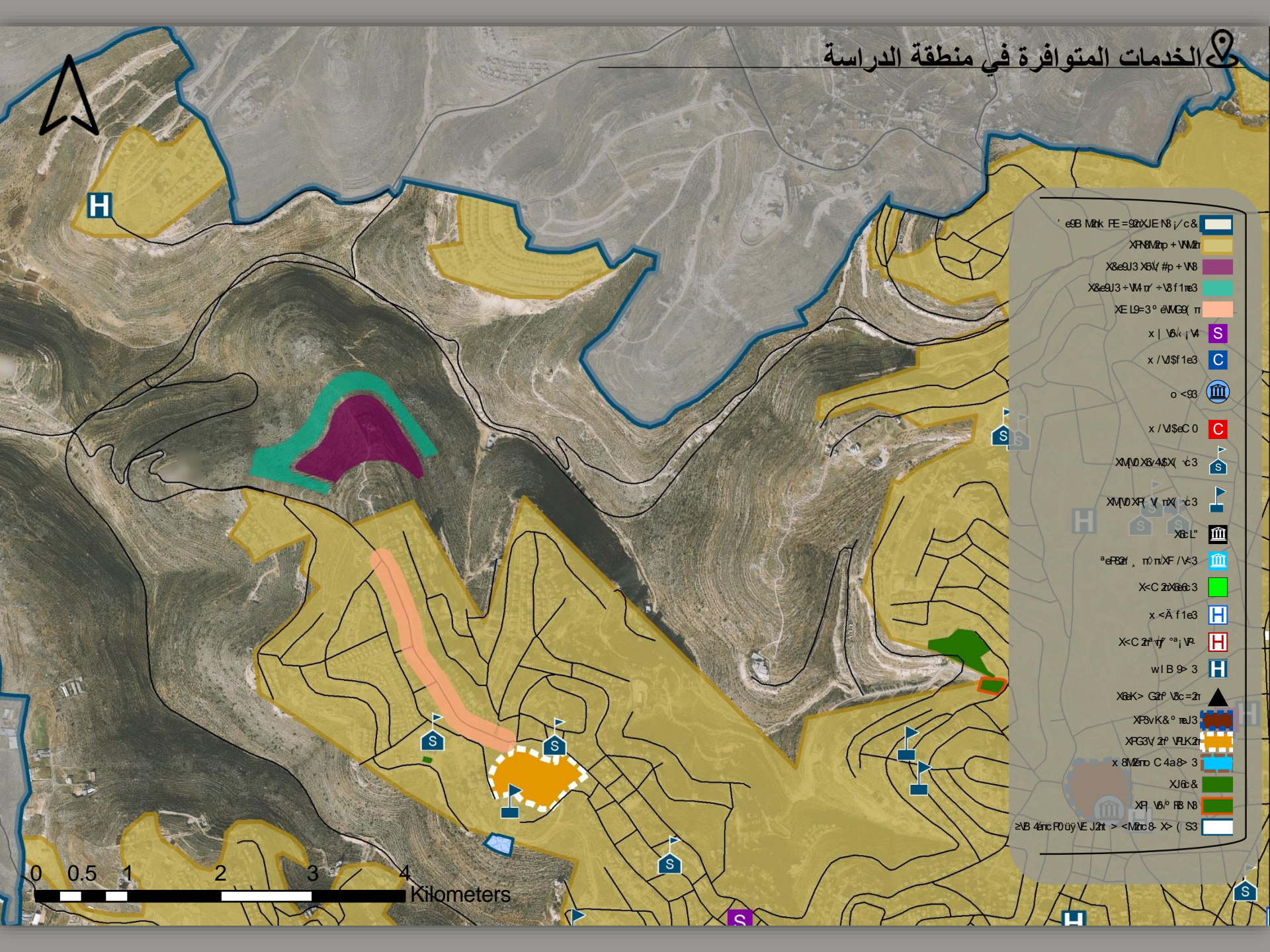


-
-
-
-
-
-
-



التحليل على مستوى الموقع

الخدمات المتوافرة في منطقة الدراسة

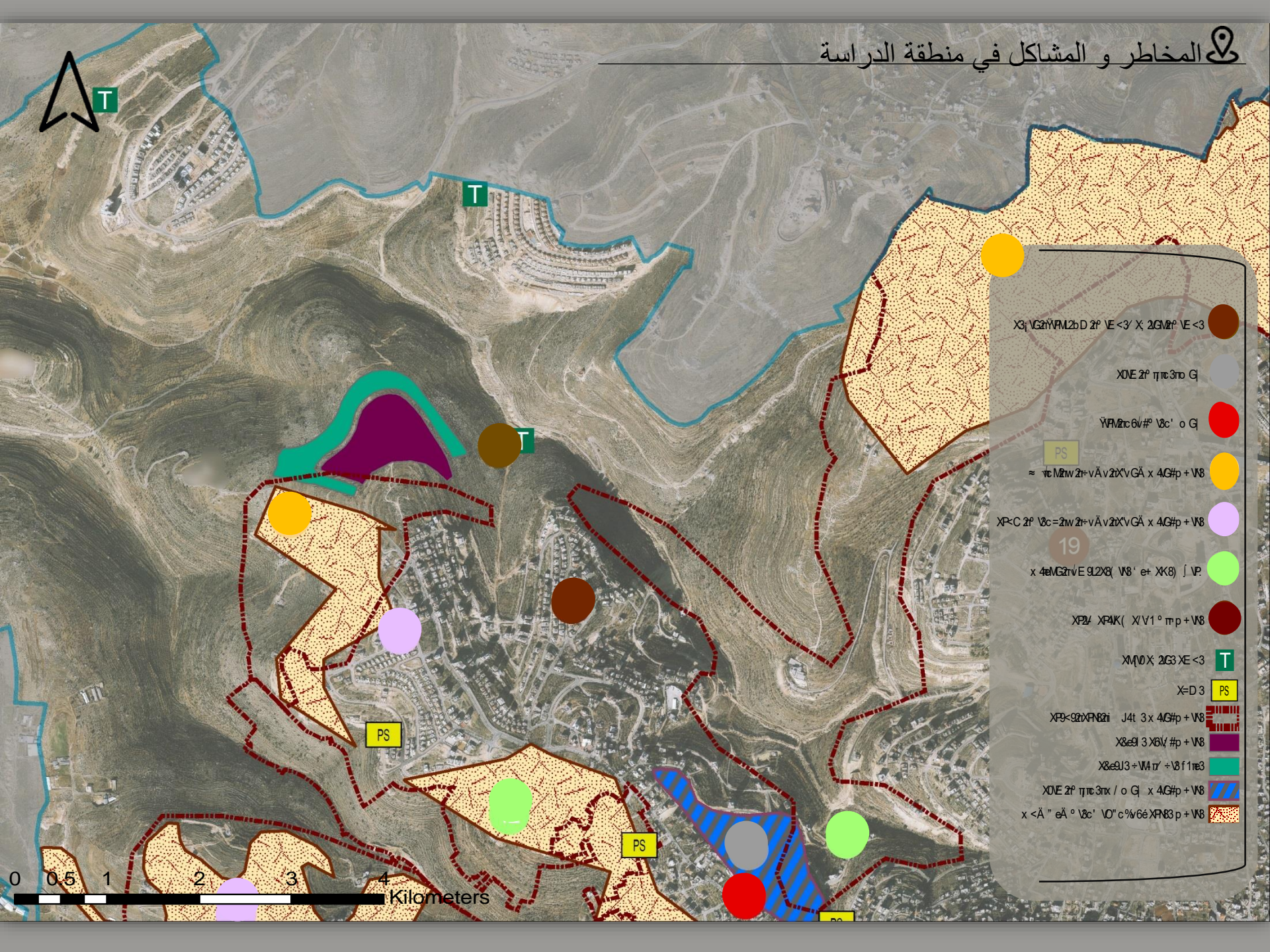


H

- ☐
- ☐
- ☐
- ☐
- S
- C
- ☐
- C
- S
- S
- ☐
- ☐
- ☐
- ☐
- ☐
- ☐
- ☐
- ☐
- ☐
- ☐
- ☐

0 0.5 1 2 3 4 Kilometers

المخاطر و المشاكل في منطقة الدراسة



$X_3 \vee G_2 \vee \Psi M_2 b D 2^p \vee E < 3' \times X 2 G M_2^p \vee E < 3$

$X \vee E 2^p \eta \pi c 3 r o G$

$\Psi \Psi M_2 c 6 v \#^p \vee 8 c' o G$

PS

$\approx \vee c M_2 n w 2^p \vee \Delta v 2^p X V G \Delta \times 4 G \# p + \vee 8$

$X P-C 2^p \vee 8 c = 2 n w 2^p \vee \Delta v 2^p X V G \Delta \times 4 G \# p + \vee 8$

19

$\times 4 e M_2 G_2 v E 9 L 2 X G \vee 8' e^+ X X 8 \vee \vee P$

$X P_2 \Psi X P_4 K (X \vee V 1^o \pi p + \vee 8$

$X M \vee X 2 G_3 X E < 3$

T

$X = D 3$

PS

$X P_3 < 9 2 \Psi \Psi M_2 b z i J 4 t 3 \times 4 G \# p + \vee 8$

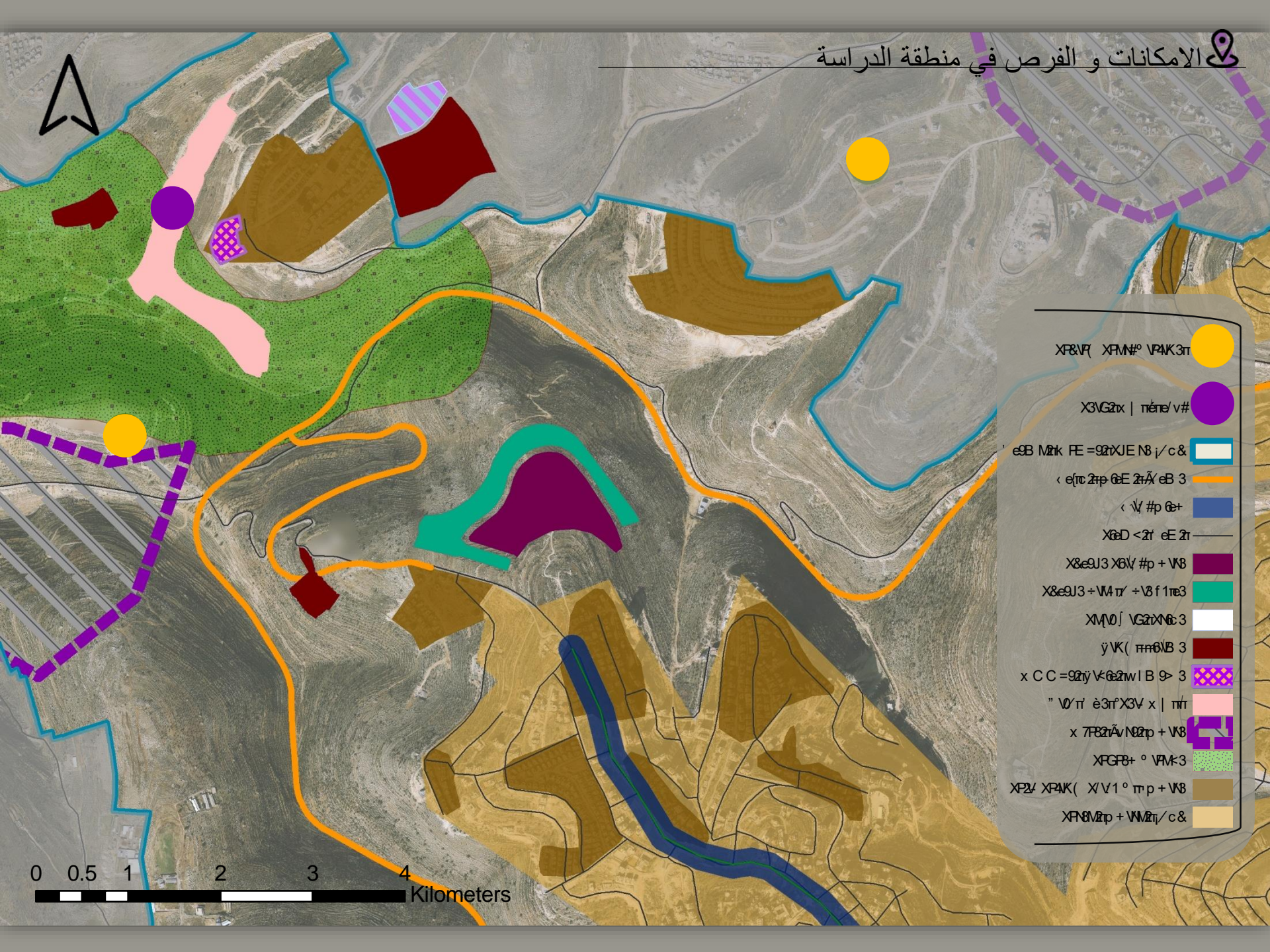
$X 8 e 9 L 3 X 6 V \# p + \vee 8$

$X 8 e 9 L 3 = \vee M_2 \tau^+ \vee 8 f 1 n e 3$

$X \vee E 2^p \eta \pi c 3 r x / o G \times 4 G \# p + \vee 8$

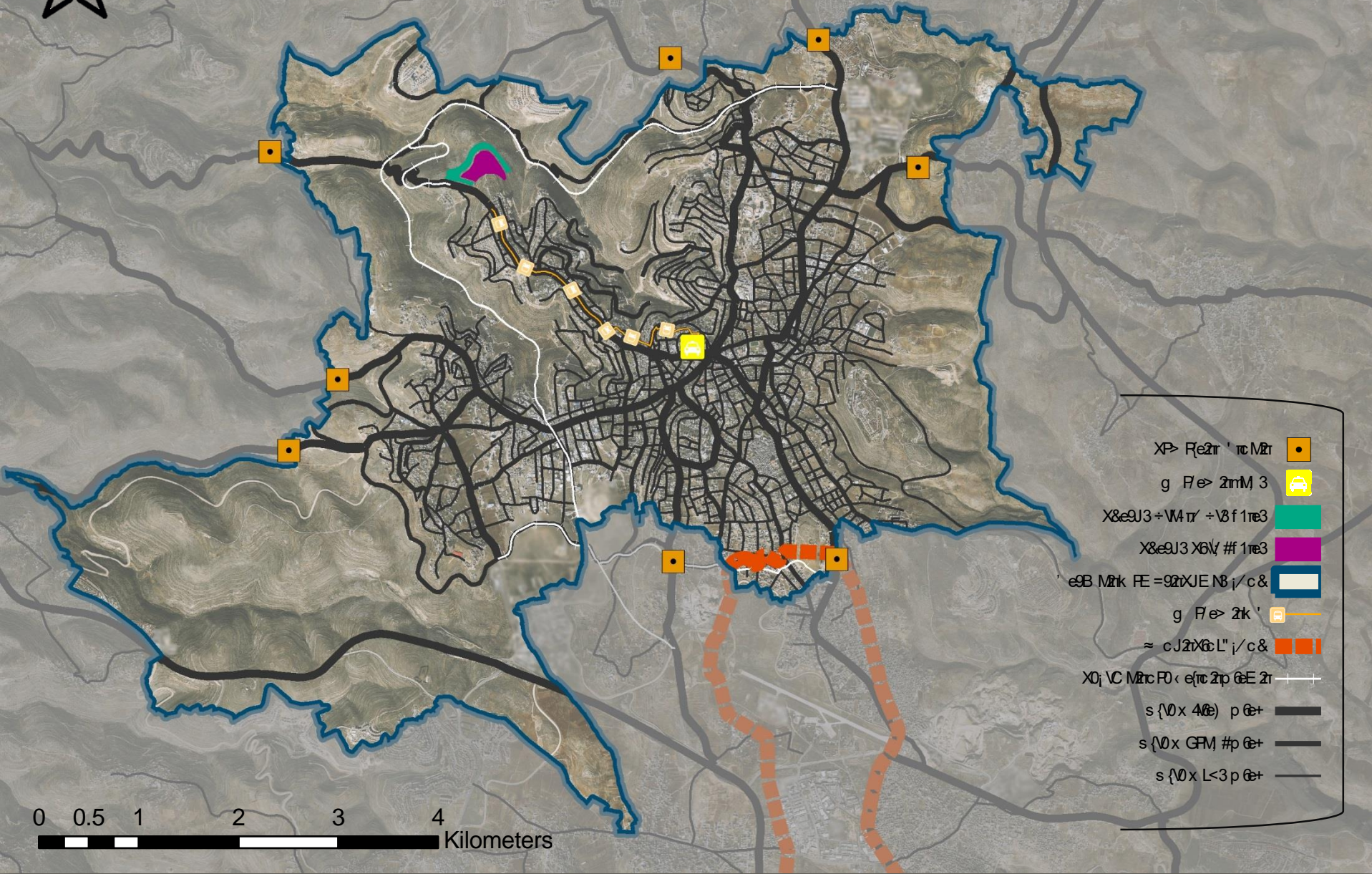
$x < \Delta'' e \Delta^o \vee 8 c' \vee O'' c \vee 6 e \Psi \Psi M_2 B 3 p + \vee 8$





- 1. Yellow circle
- 2. Purple circle
- 3. Blue line
- 4. Orange line
- 5. Dark blue line
- 6. Purple area
- 7. Green area
- 8. White area
- 9. Red area
- 10. Purple checkered area
- 11. Pink area
- 12. Purple checkered area
- 13. Green dotted area
- 14. Brown area

0 0.5 1 2 3 4 Kilometers



- XP> Fēzīr ' rē Mzīr ■
- g Fēzīr M 3 ■
- X&eU3 + V4 r' + V8 f 1 rē3 ■
- X&eU3 X6 V # 1 rē3 ■
- eB Mzīk FE = 92 r XJE N8 j / c & ■
- g Fēzīr 2k ' ■
- ≈ c J 2 r X6 L' j / c & ■
- XDj VC Mzīr FD < e f rē 2 r p GēE 2 r +
- s {0 x 40e} p Gē+ —
- s {0 x CFM # p Gē+ —
- s {0 x L < 3 p Gē+ —

0 0.5 1 2 3 4 Kilometers

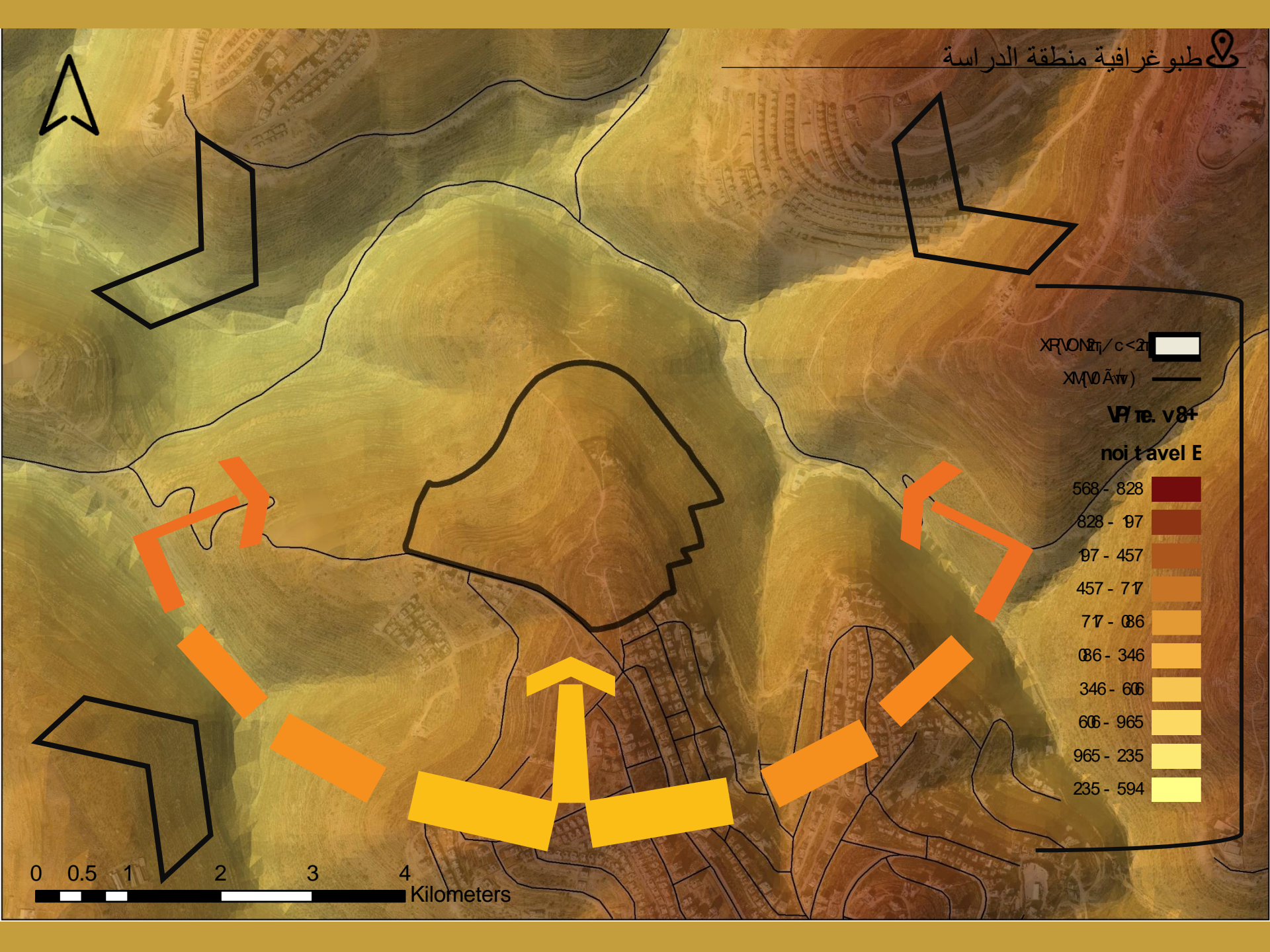
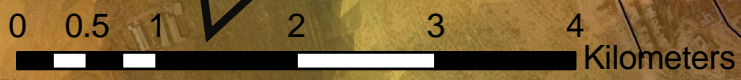


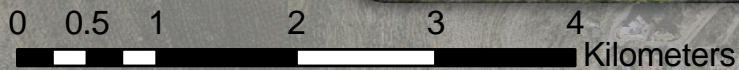
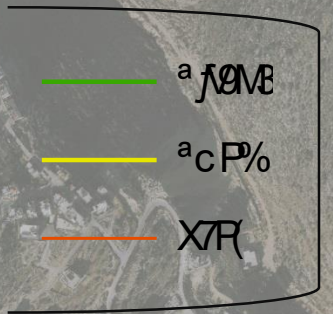
ΧΡΩΜΑΤΙΣΜΟΣ <math>c < 20</math>
ΧΡΩΜΑΤΙΣΜΟΣ

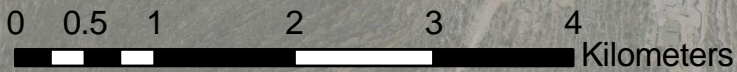
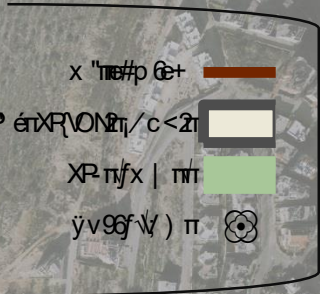
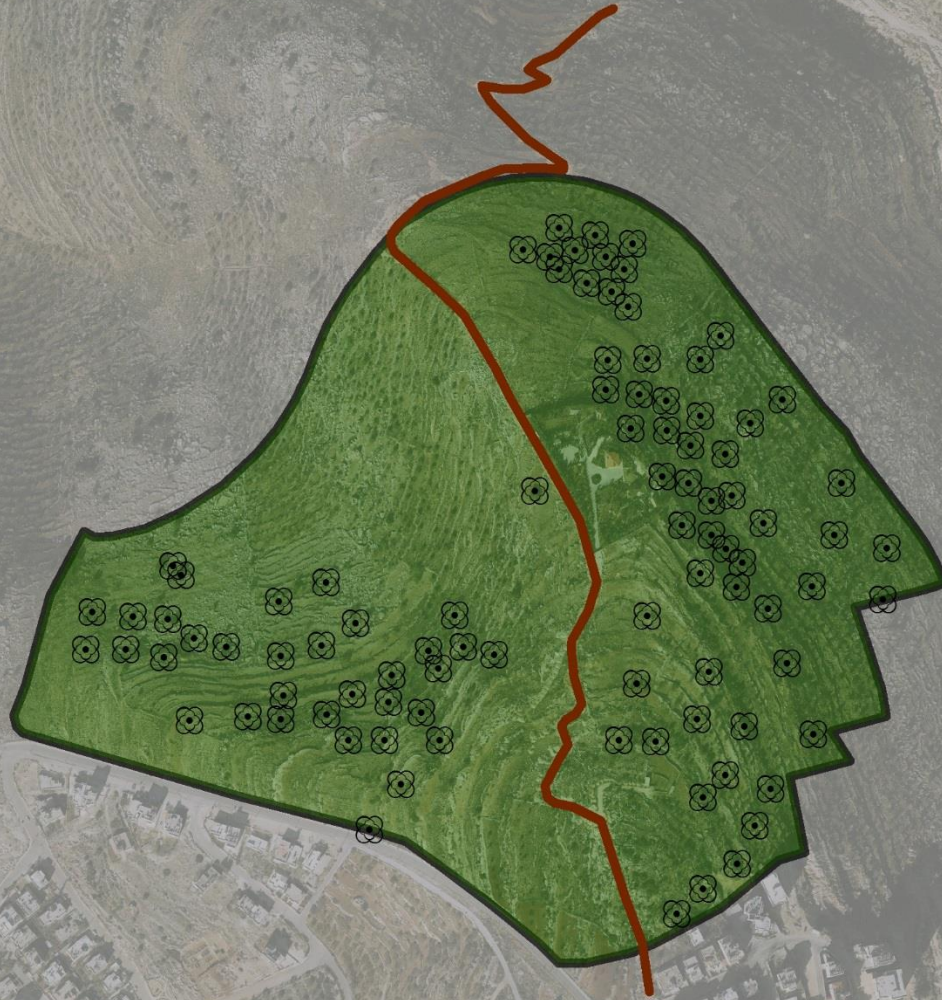
Μετ. v8+

noit level E

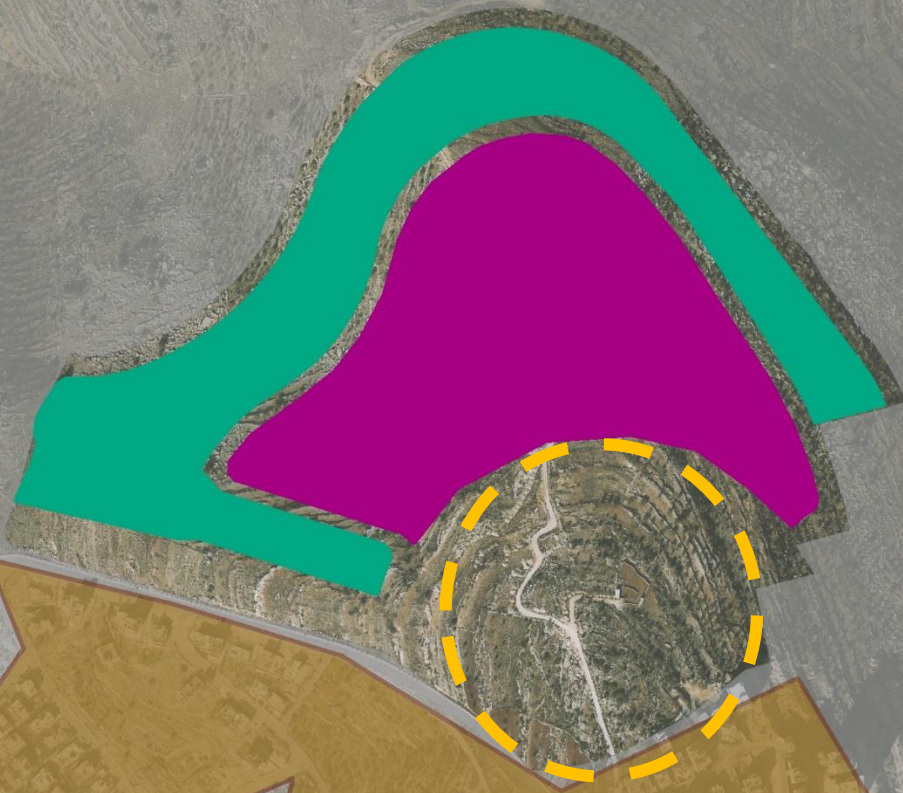
568 - 828	Dark Red
828 - 97	Red
97 - 457	Red-Orange
457 - 77	Orange
77 - 86	Light Orange
86 - 346	Yellow-Orange
346 - 66	Yellow
66 - 965	Light Yellow
965 - 235	Very Light Yellow
235 - 594	White



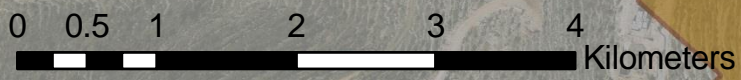




حدود المشروع



- X&e9J3 ÷ W4 π' ÷ V3 f 1π3
- X&e9J3 X6V #f 1π3
- Xπ8V2π + Wπ2π





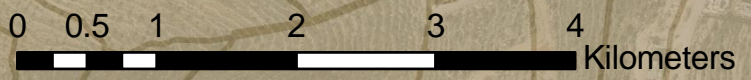
حدود المشروع حسب خطوط الكنتور

0 0.5 1 2 3 4 Kilometers



Άεβ Μπ/ε& ———

x | πέρμε0



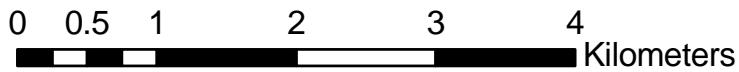
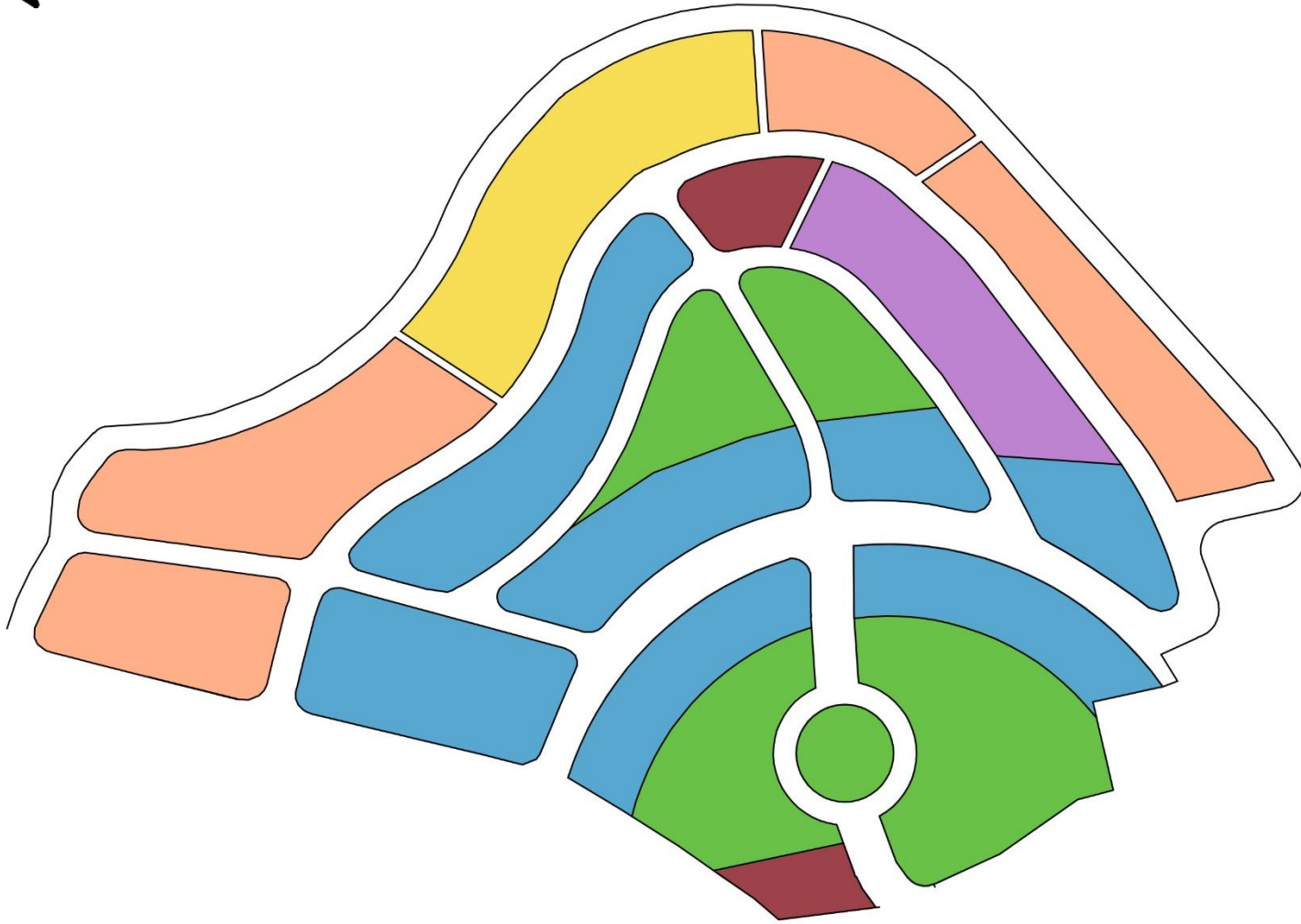


٢٠٢٤/١١/٢٠



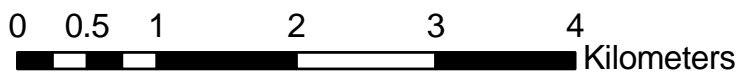
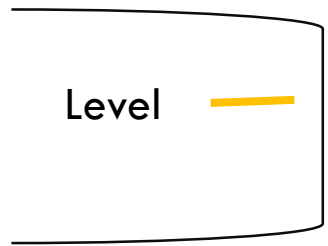
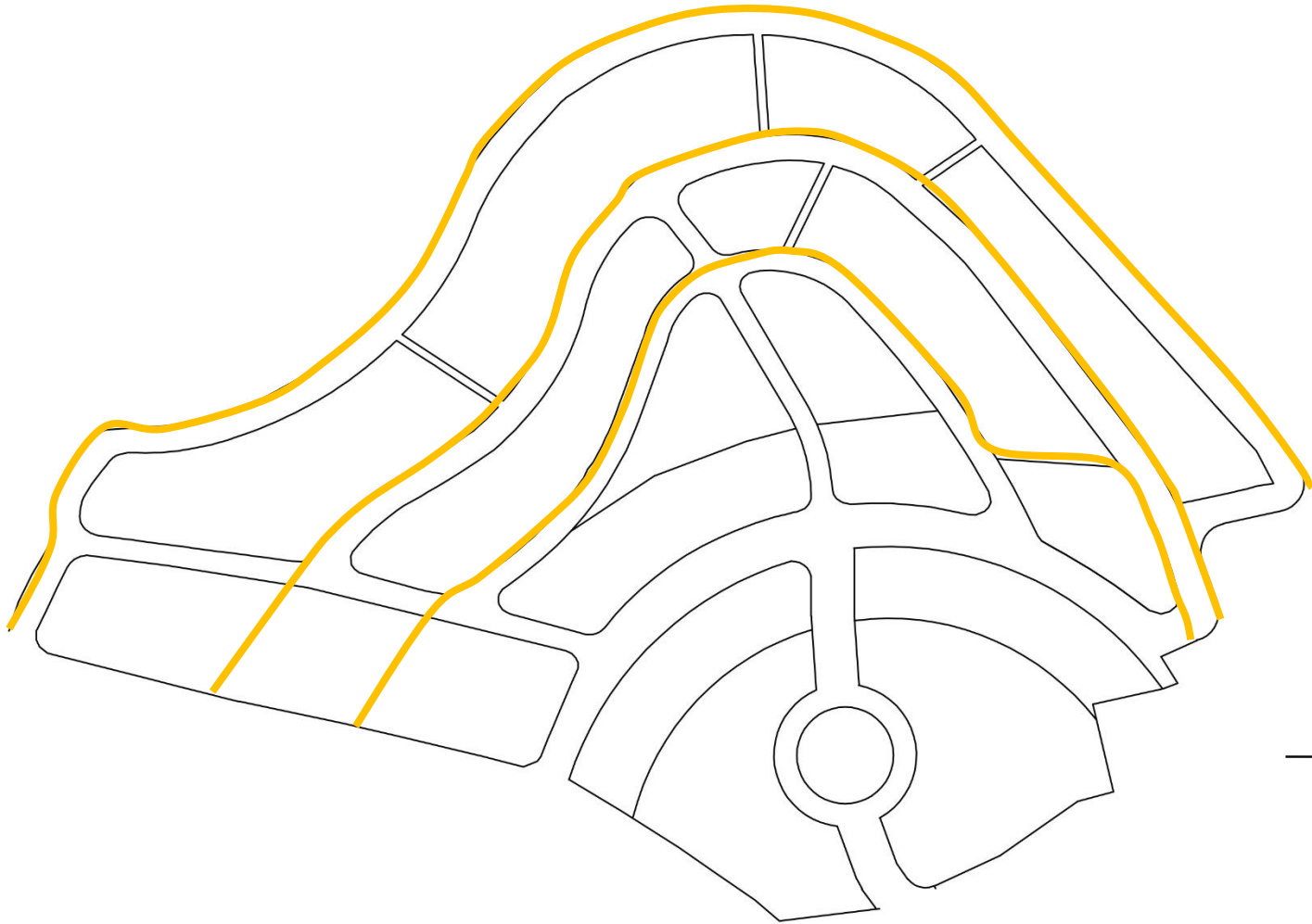
0 0.5 1 2 3 4 Kilometers

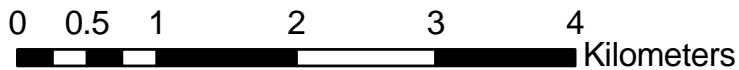
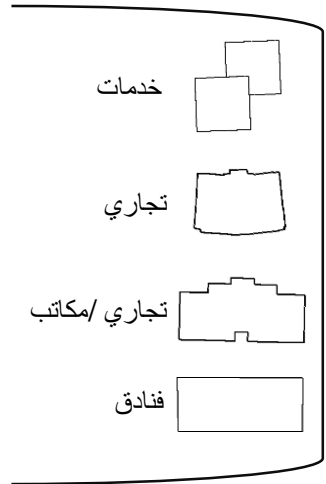
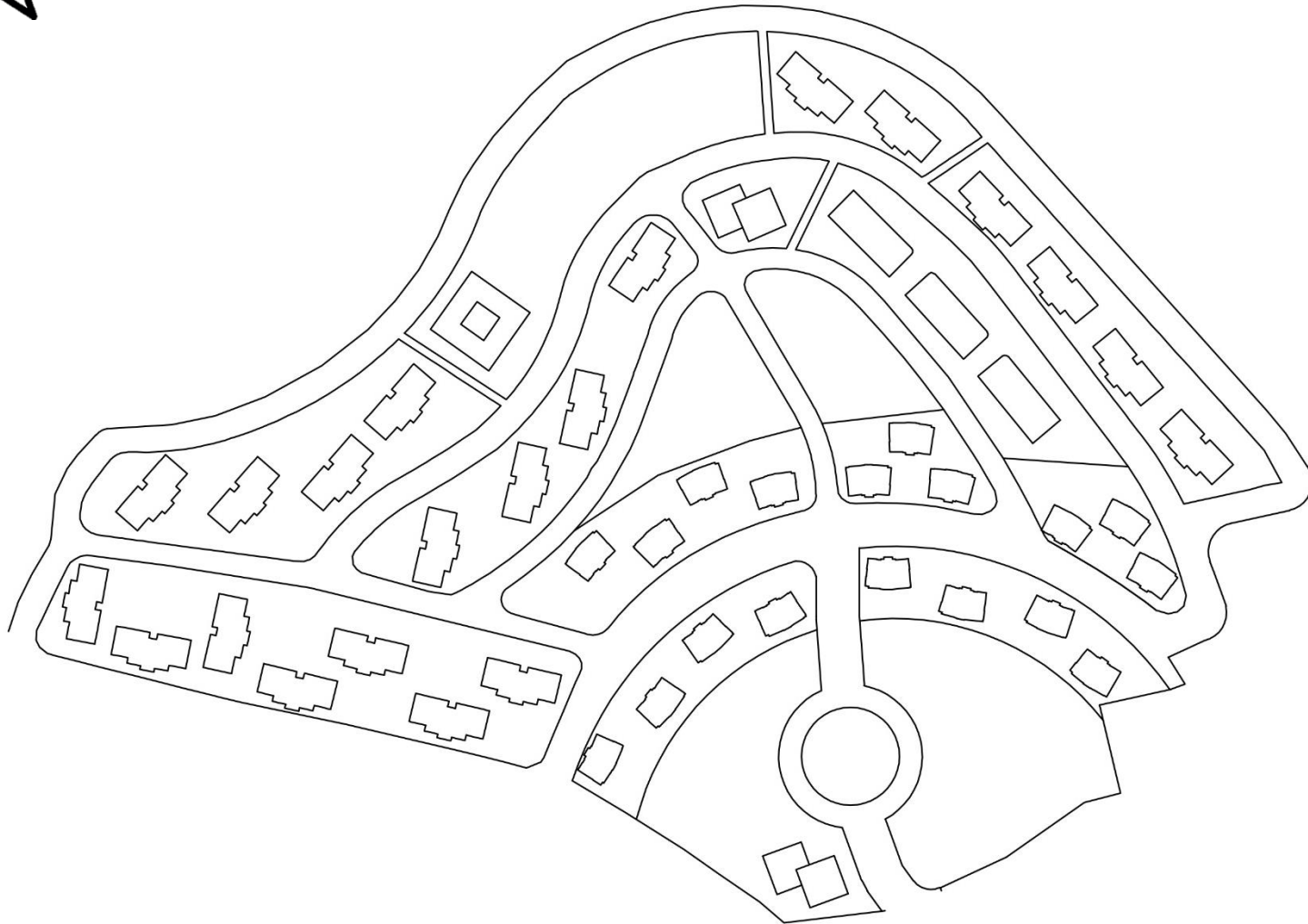
المخطط الهيكلية

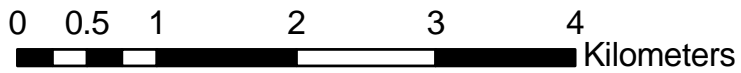
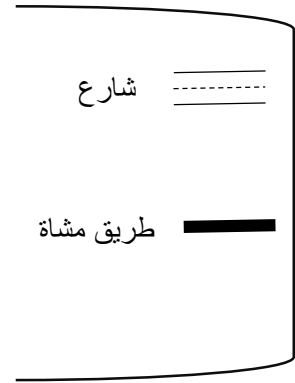
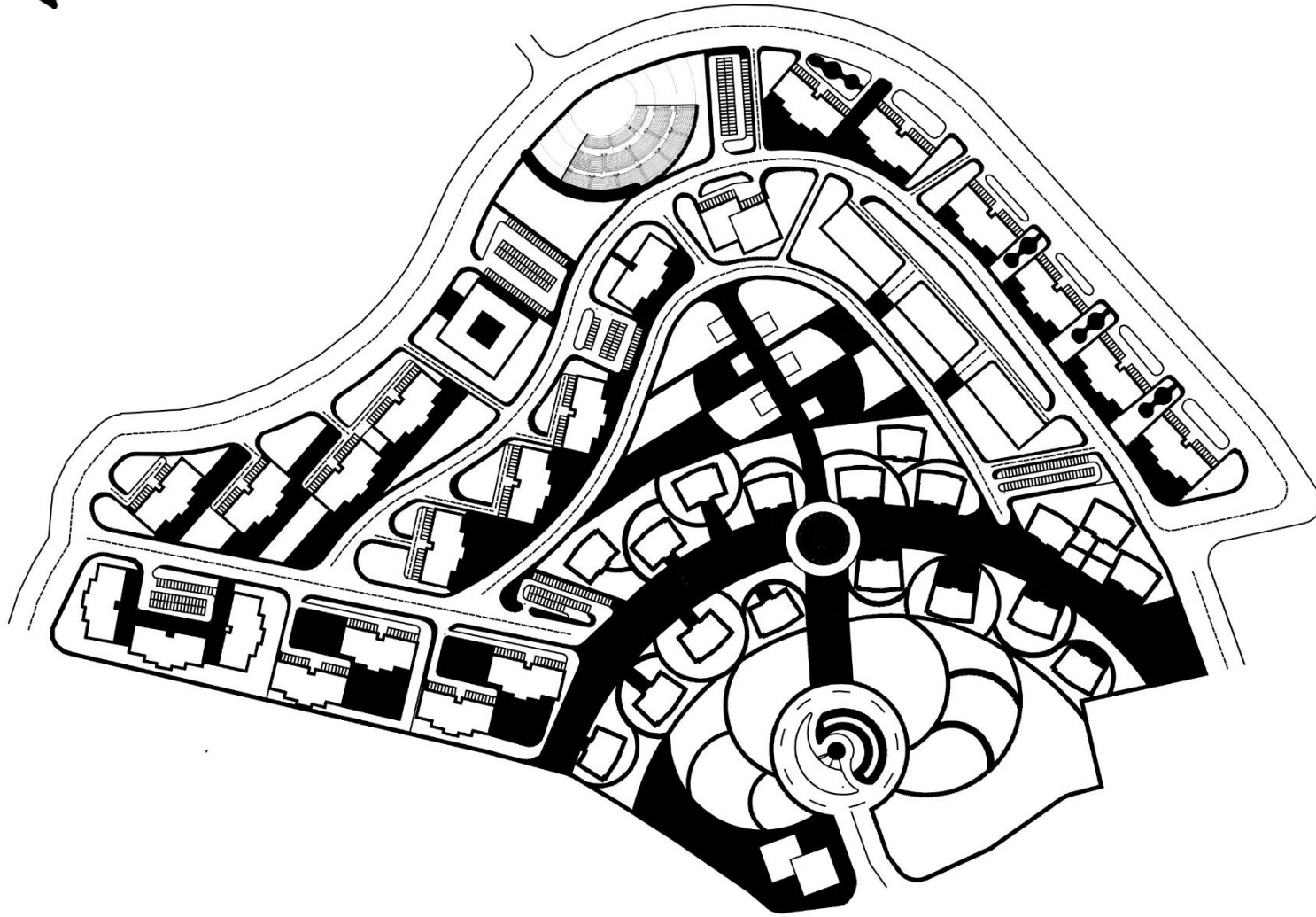




Levels 

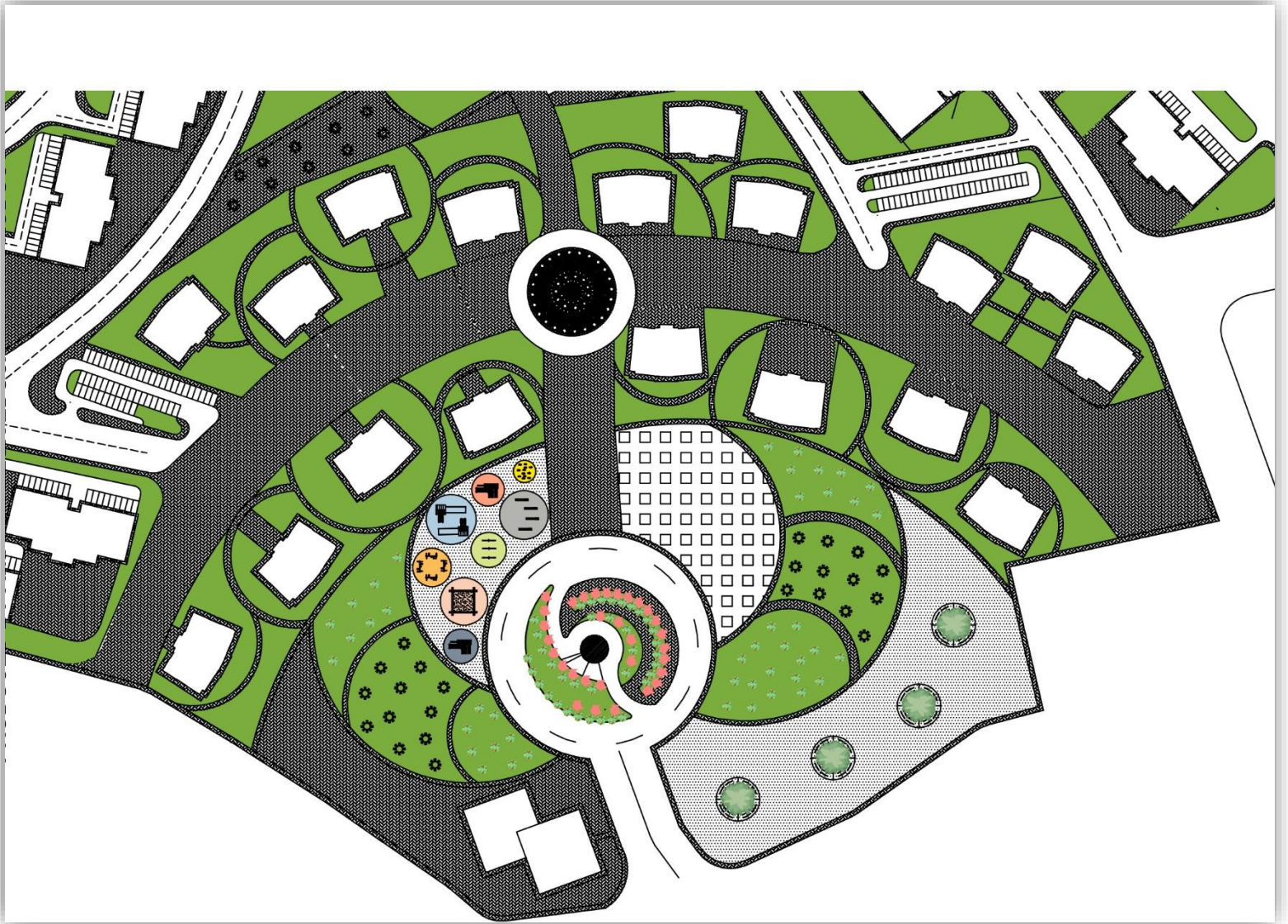




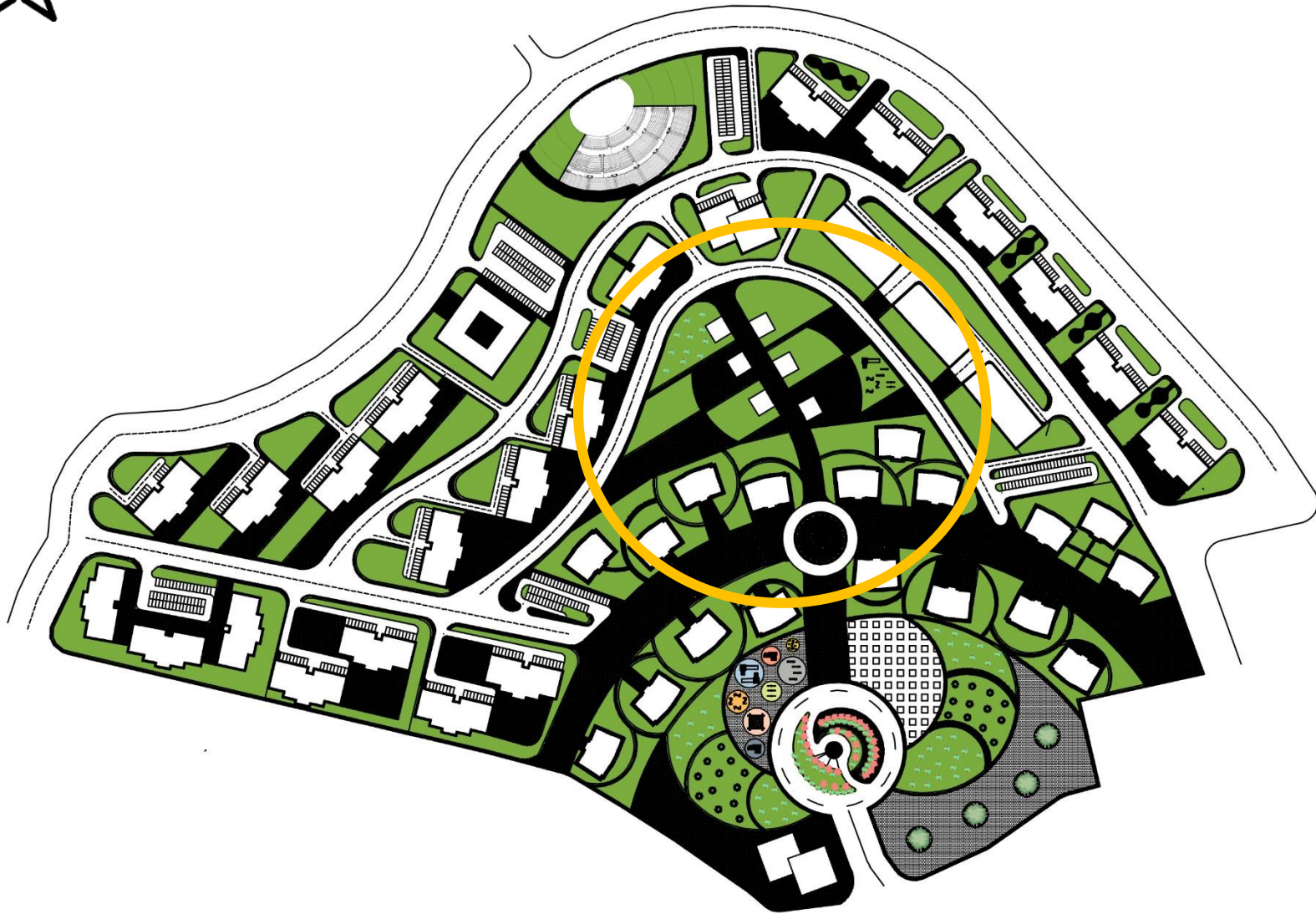




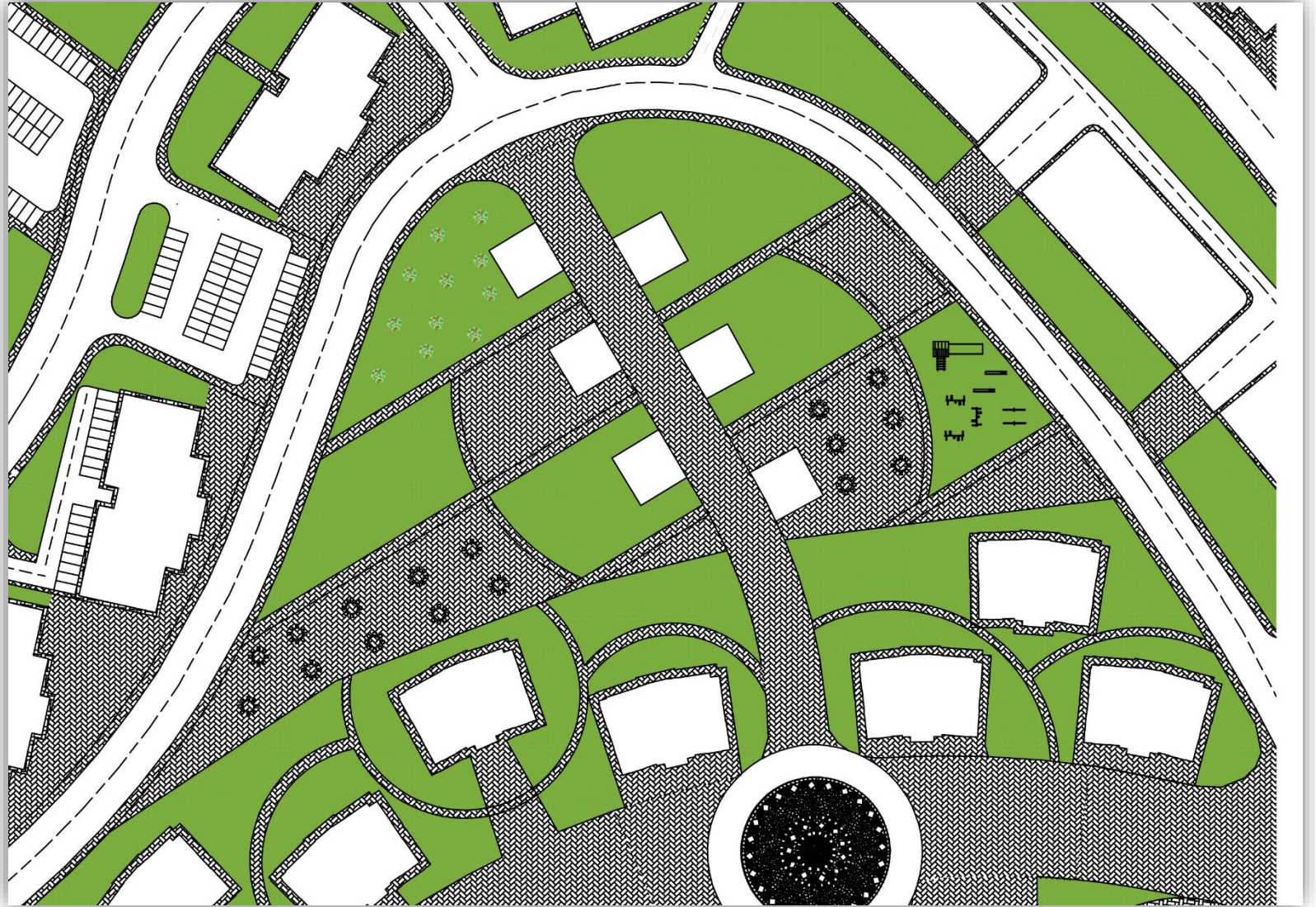
0 0.5 1 2 3 4 Kilometers



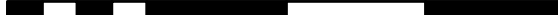
0 0.5 1 2 3 4 Kilometers

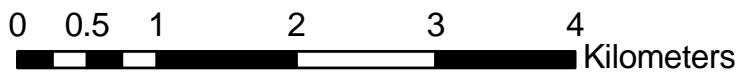


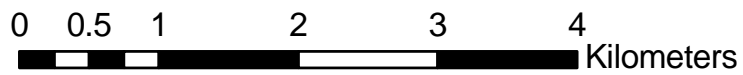
0 0.5 1 2 3 4 Kilometers

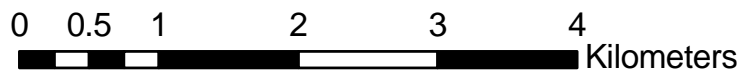


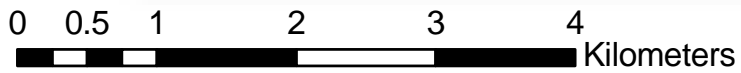
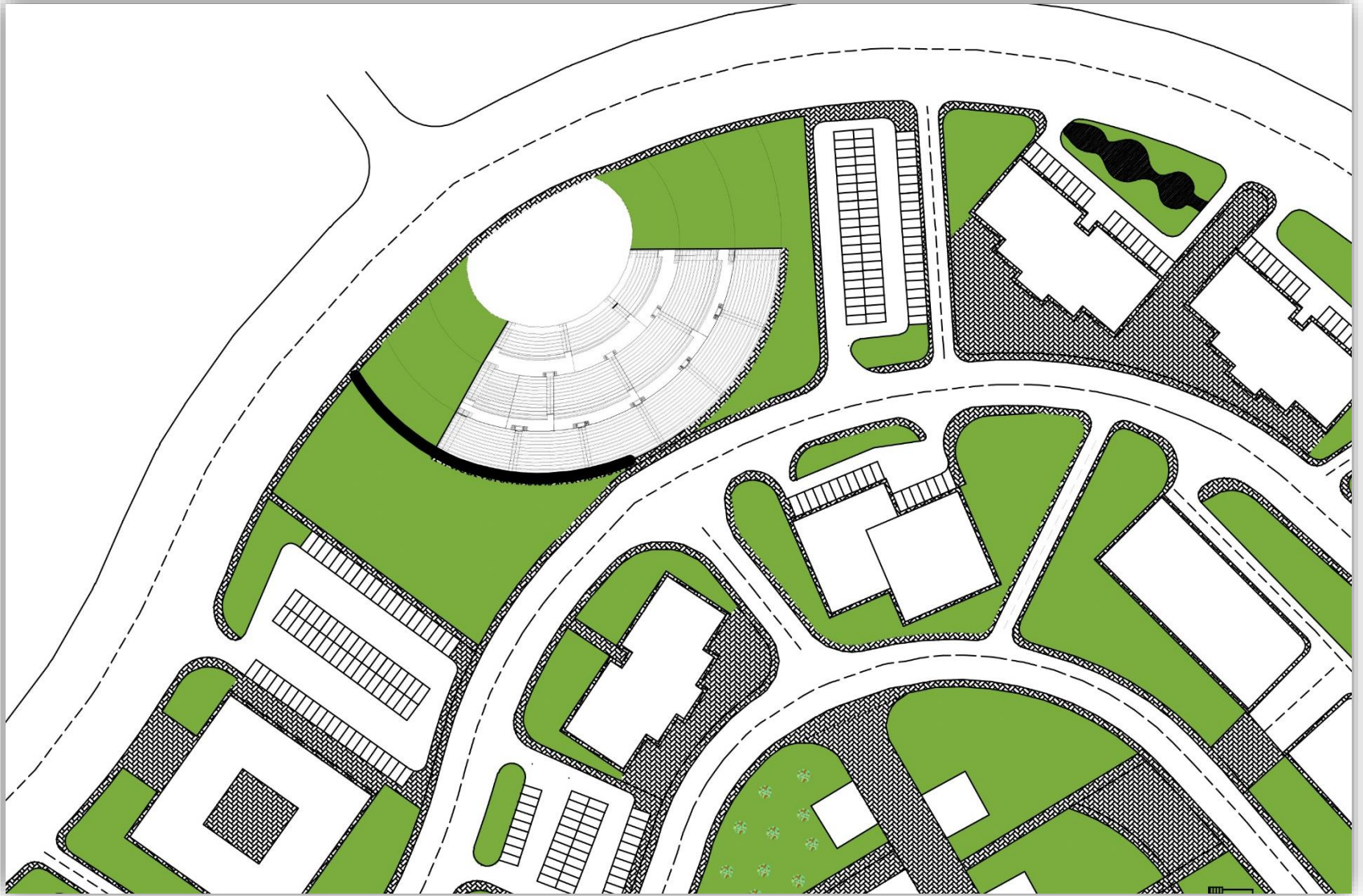
0 0.5 1 2 3 4 Kilometers





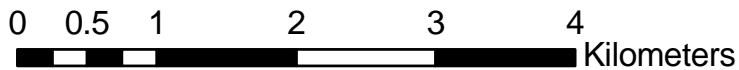


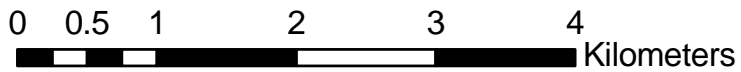
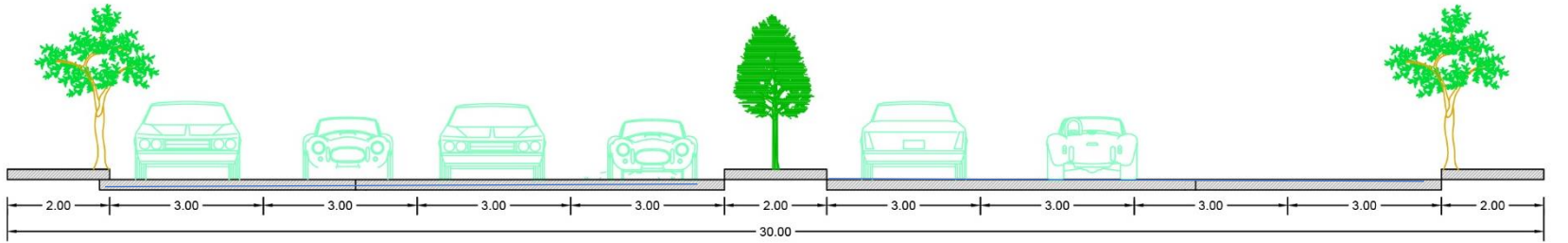






A-A

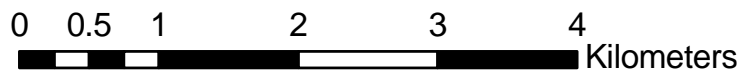


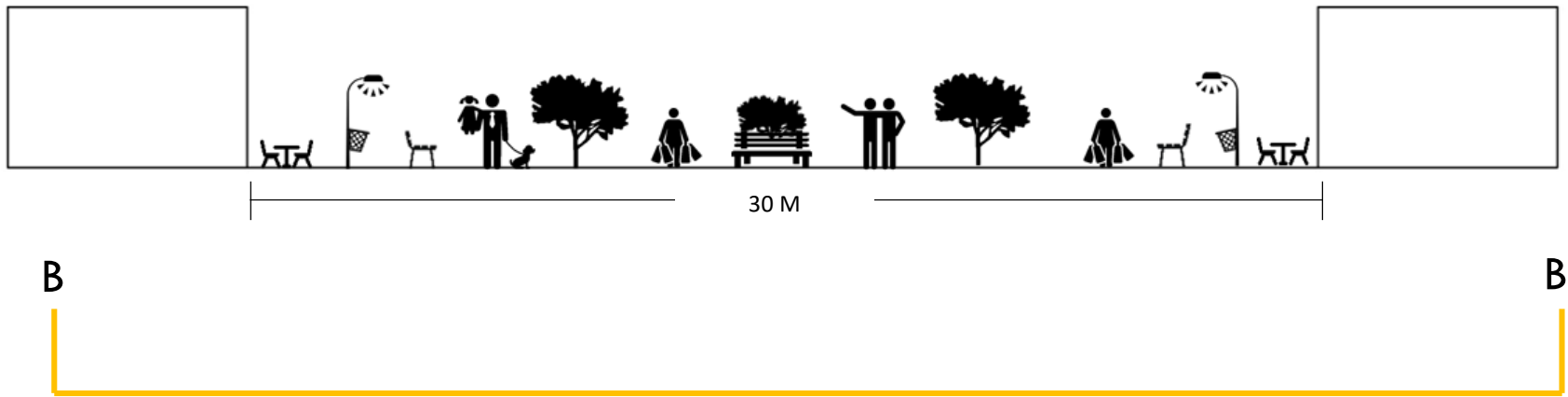




A-A

B-B







The End