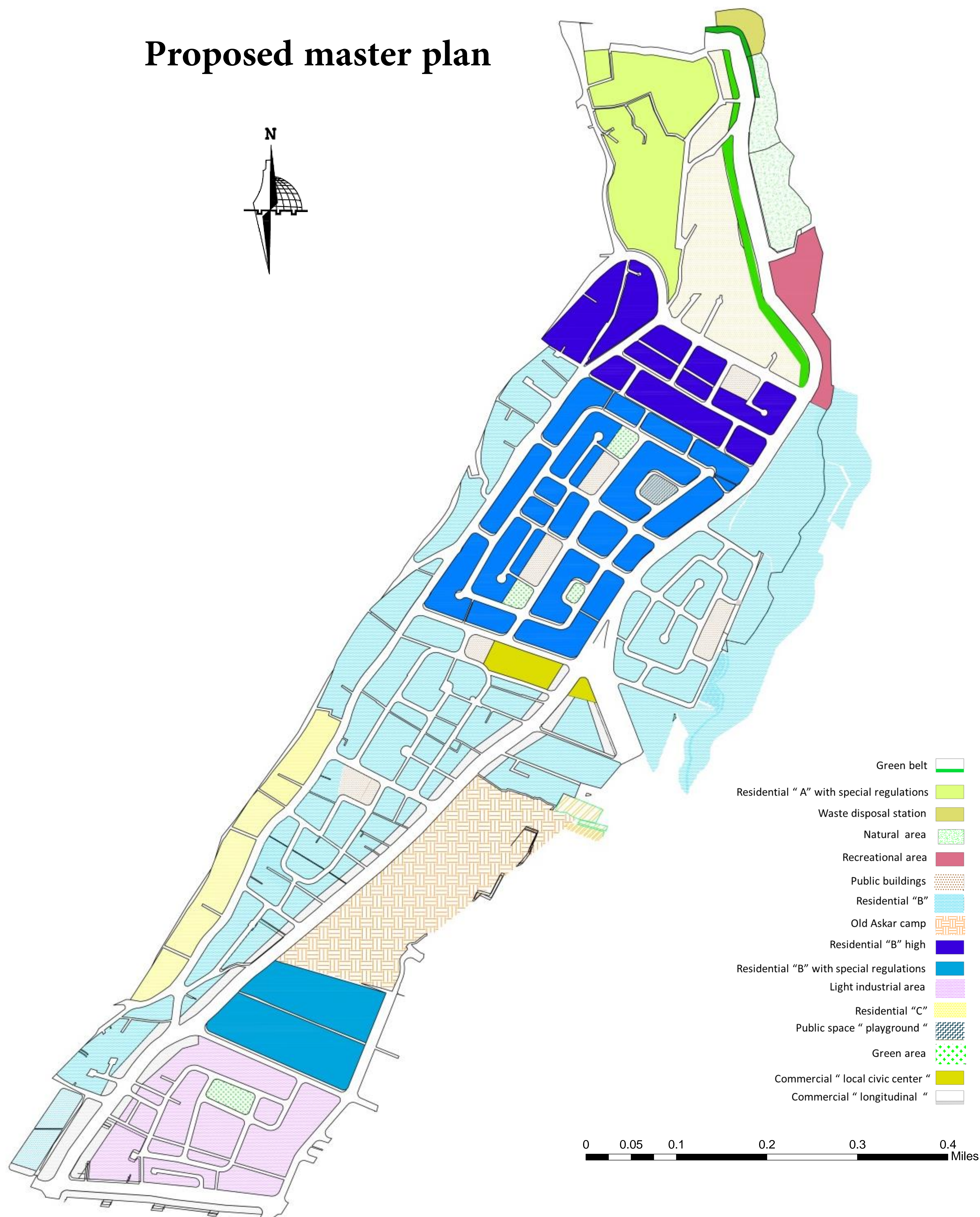
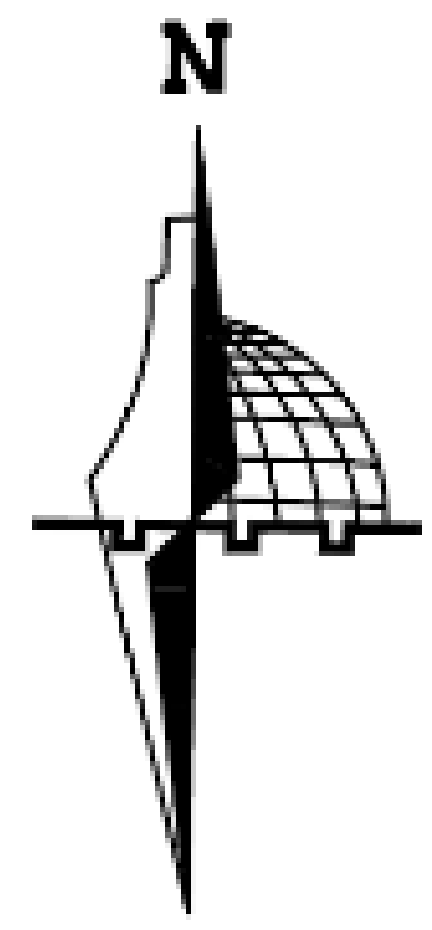


Proposed master plan



Proposed circulation plan



Proposed Hiking rout



Urban development of eastern north entrance of Nablus city

Overview

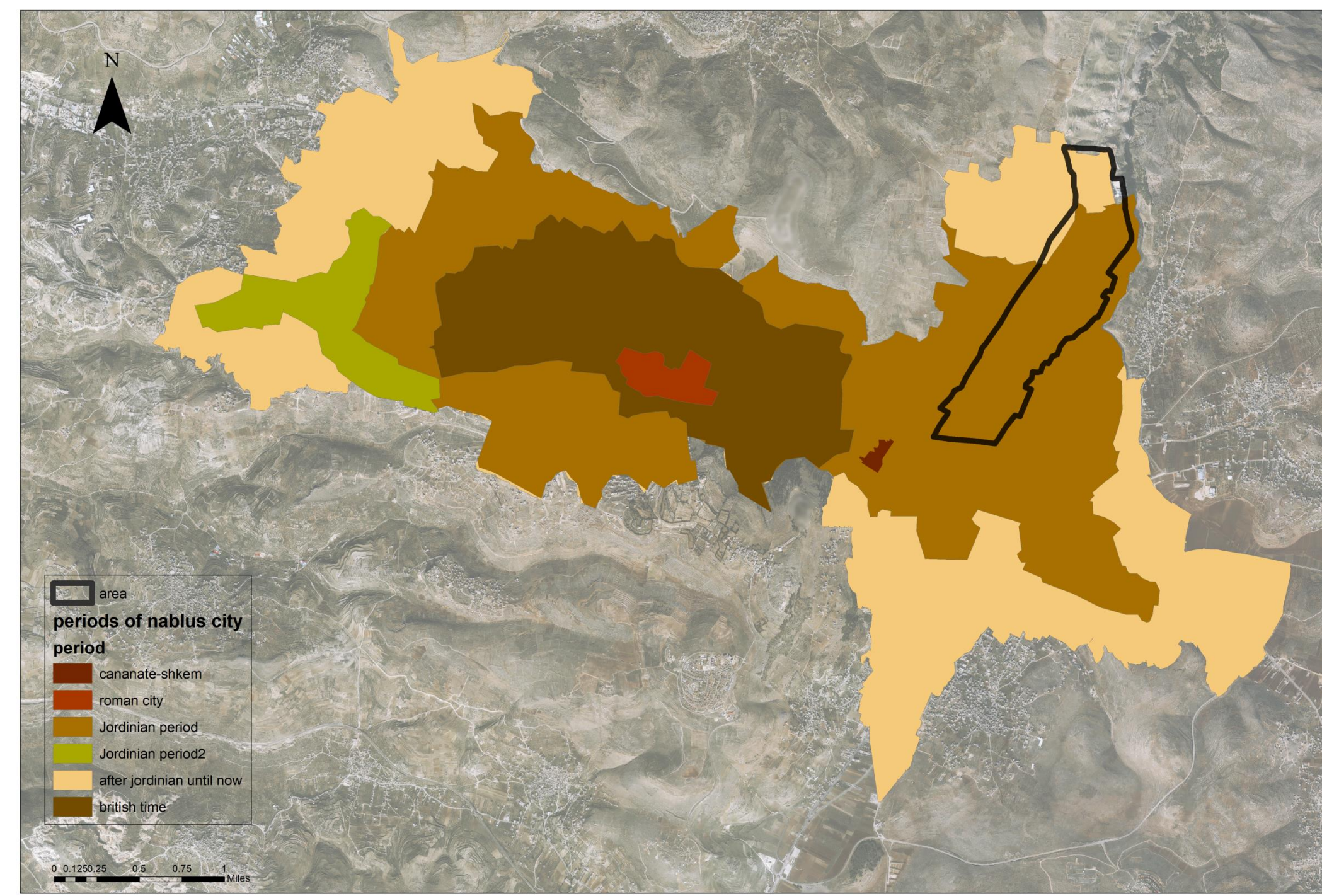
What is city entrance ?

- A place where transferee from area to another
- entry is not just a physical location to enter and exit
- Usually city entrance is a strong reflection and representative tool that symbolizes the type or life

Emphasis on the identity the entrance

- Reinforcement of Vision and landscape to one or more elements of natural signs
- Establishment of Some of the known activities
- Use of special symbolic forms
- Using the signs and elements which are set up in the entrance

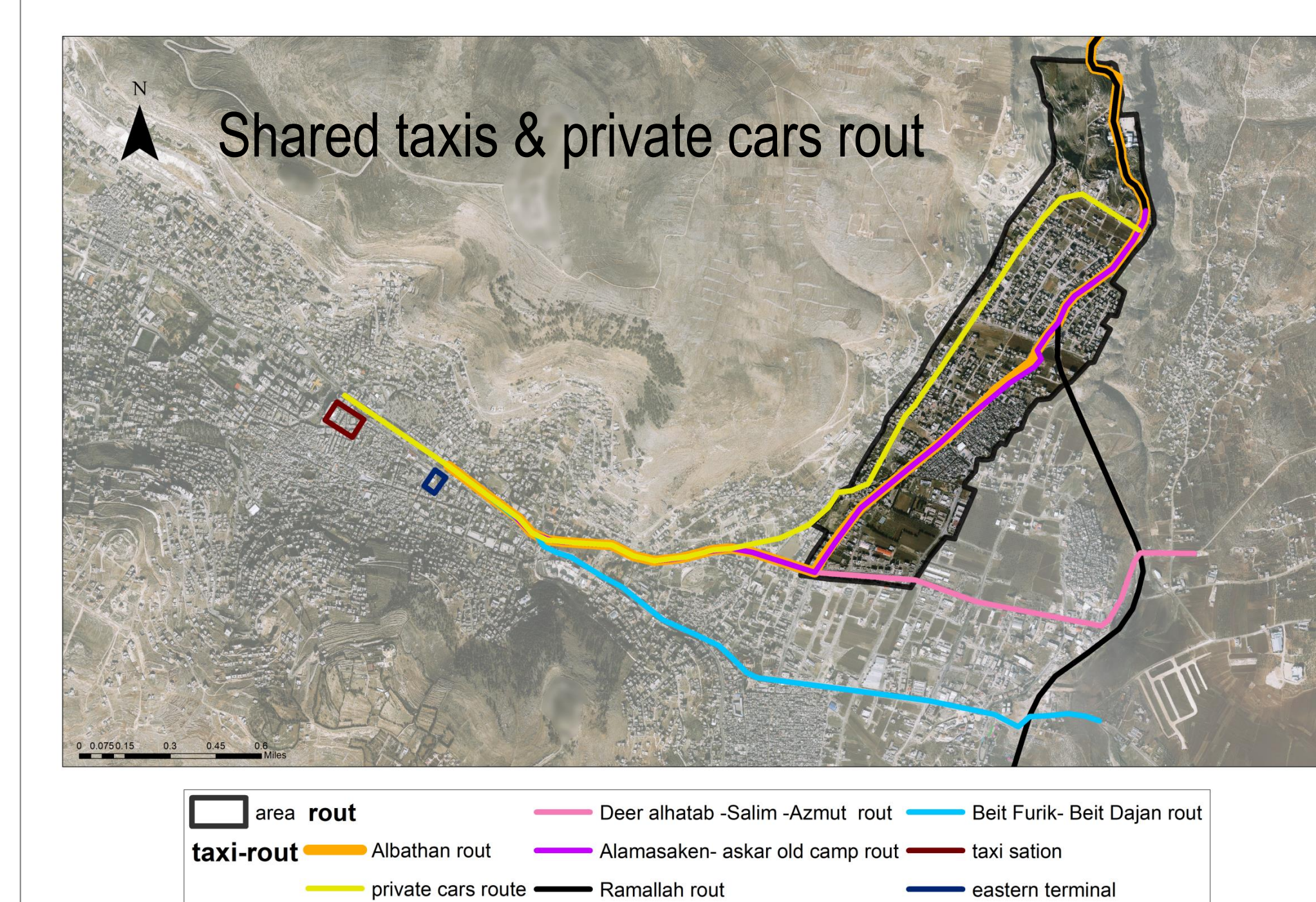
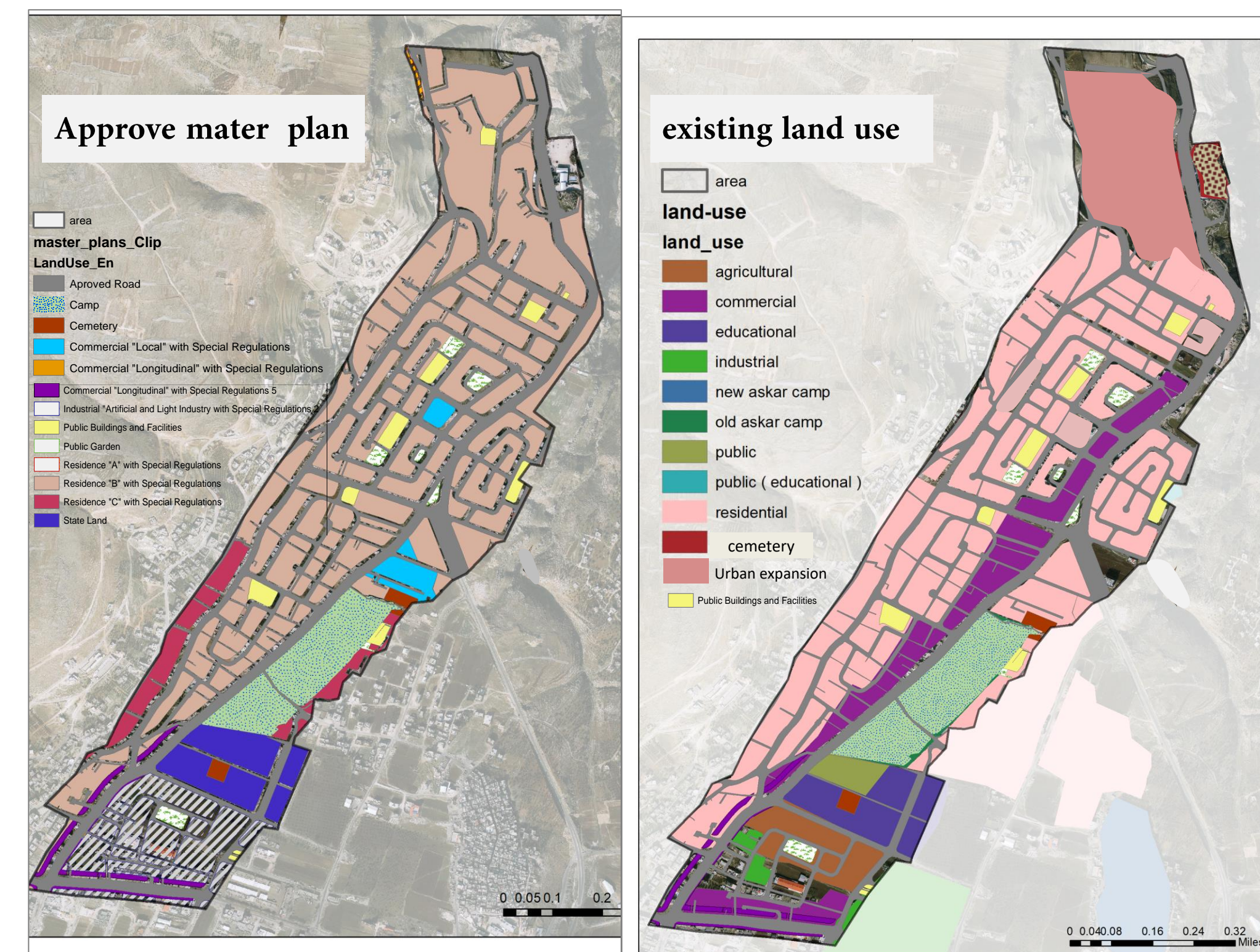
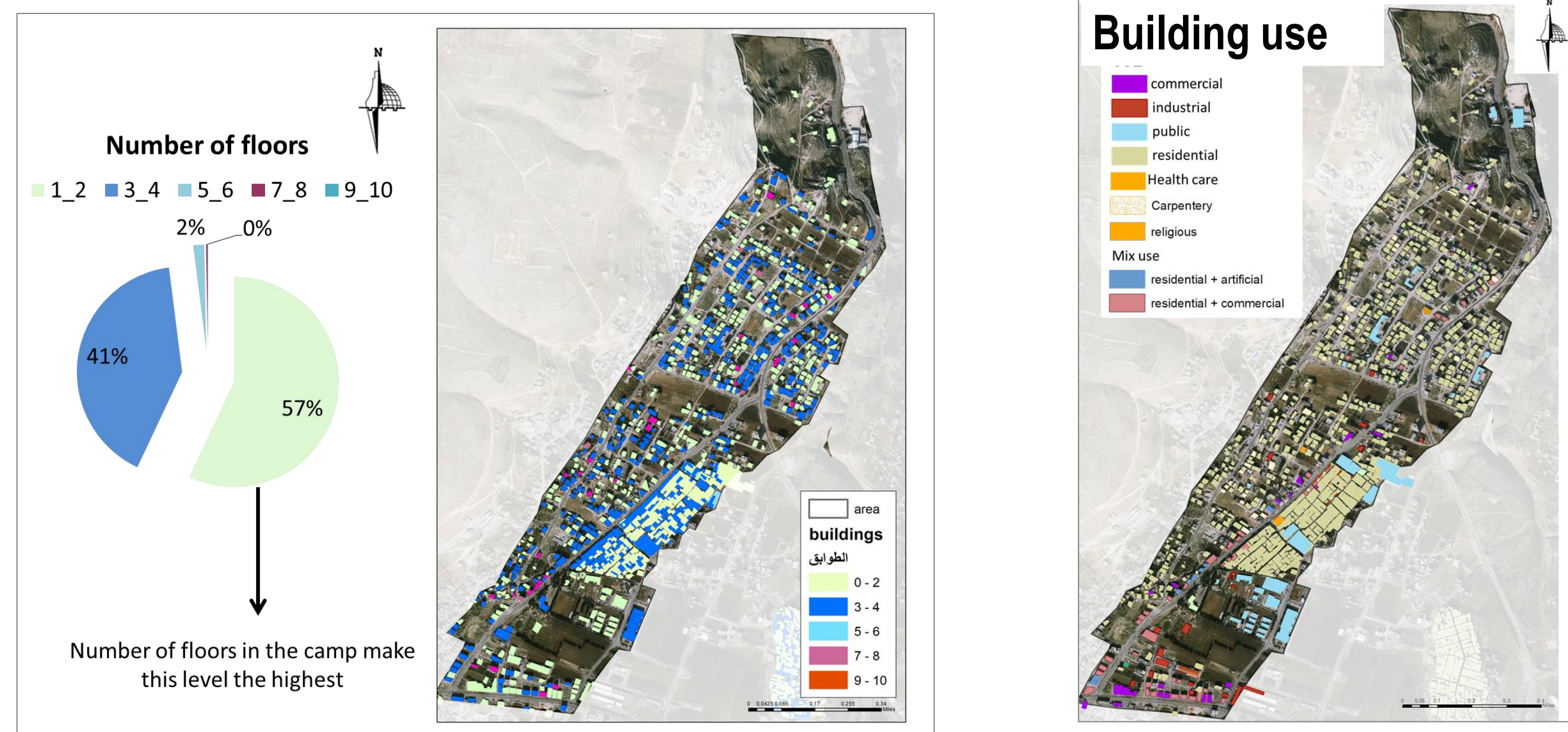
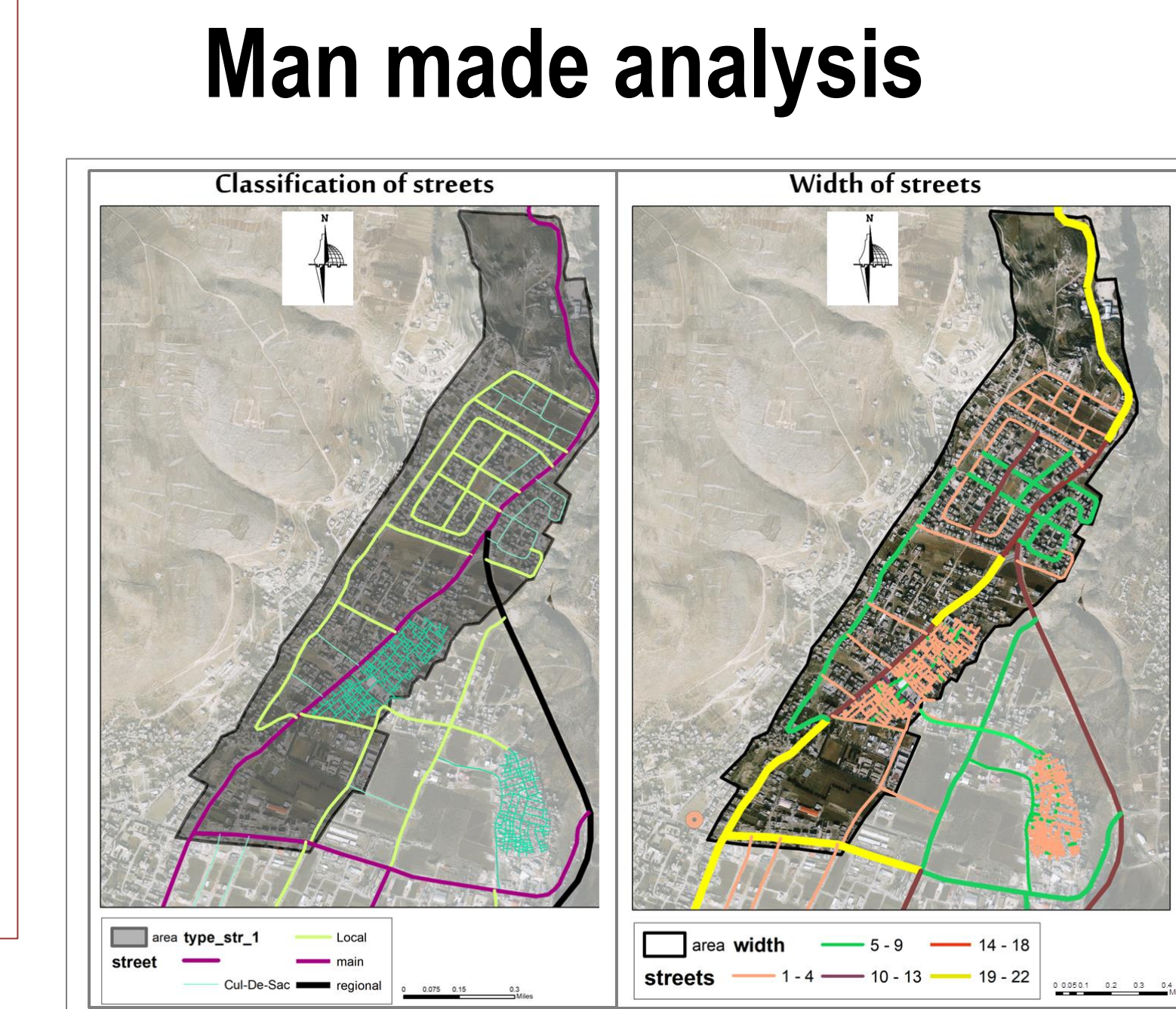
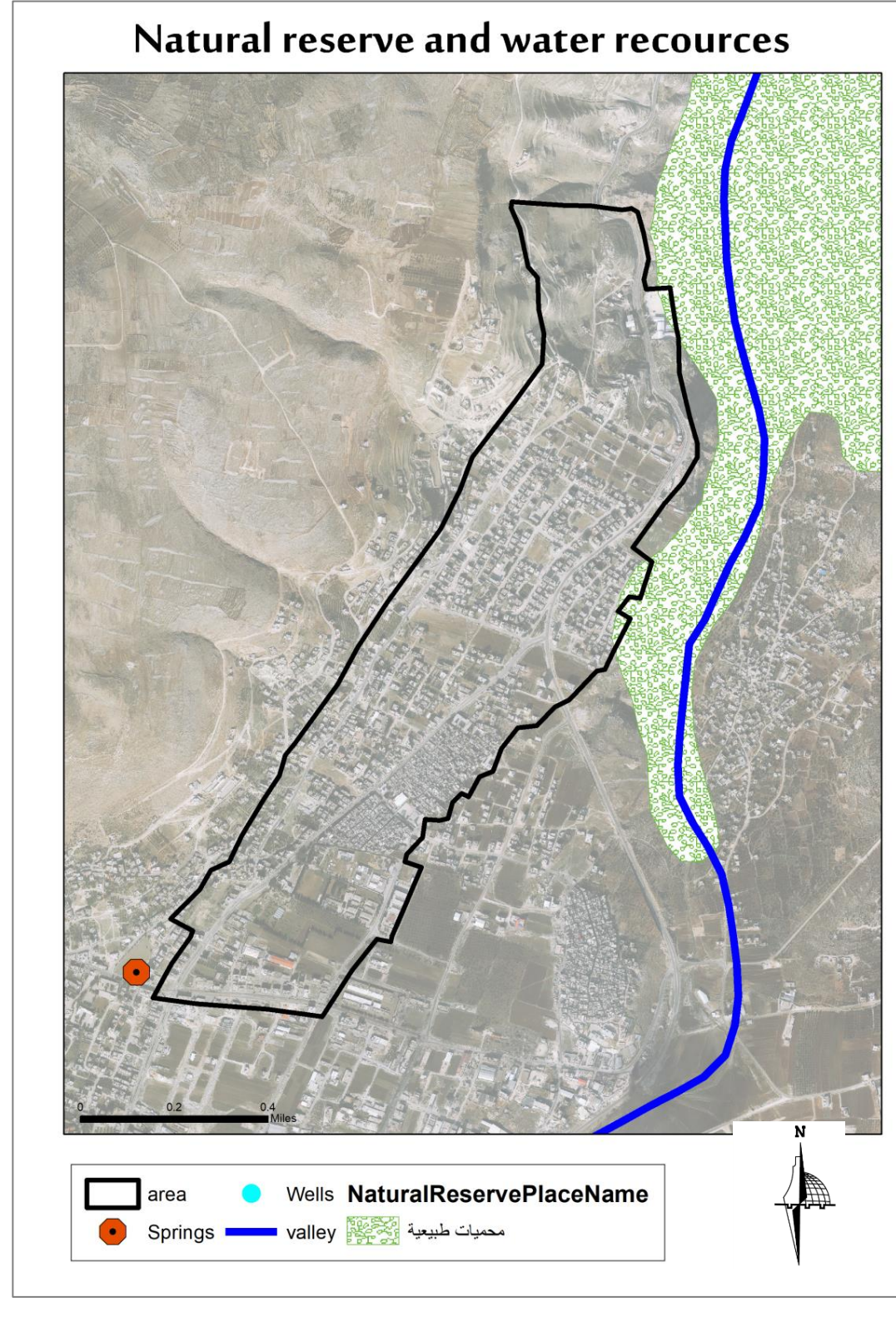
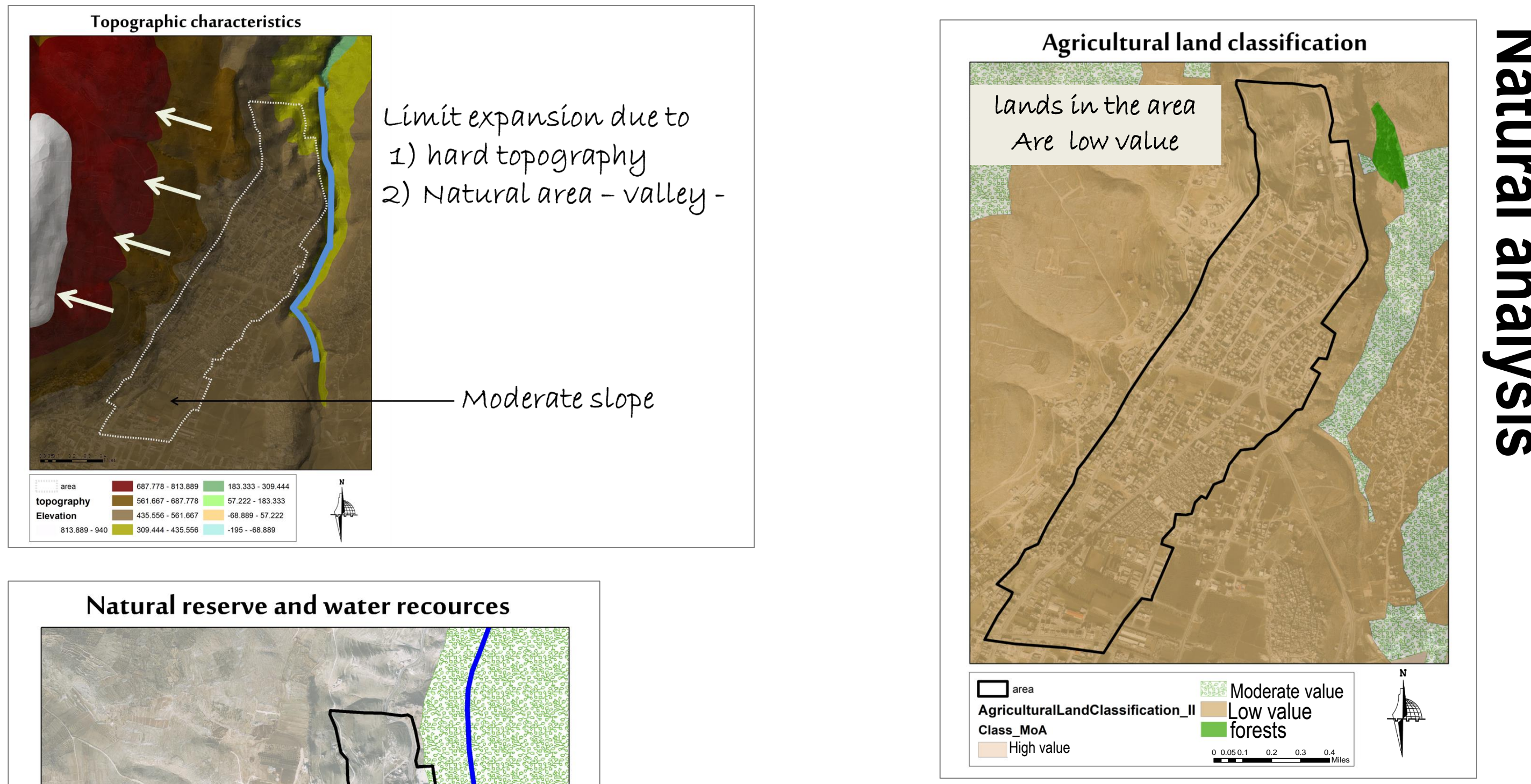
Site project



Northern entrance of Nablus It has an important value :

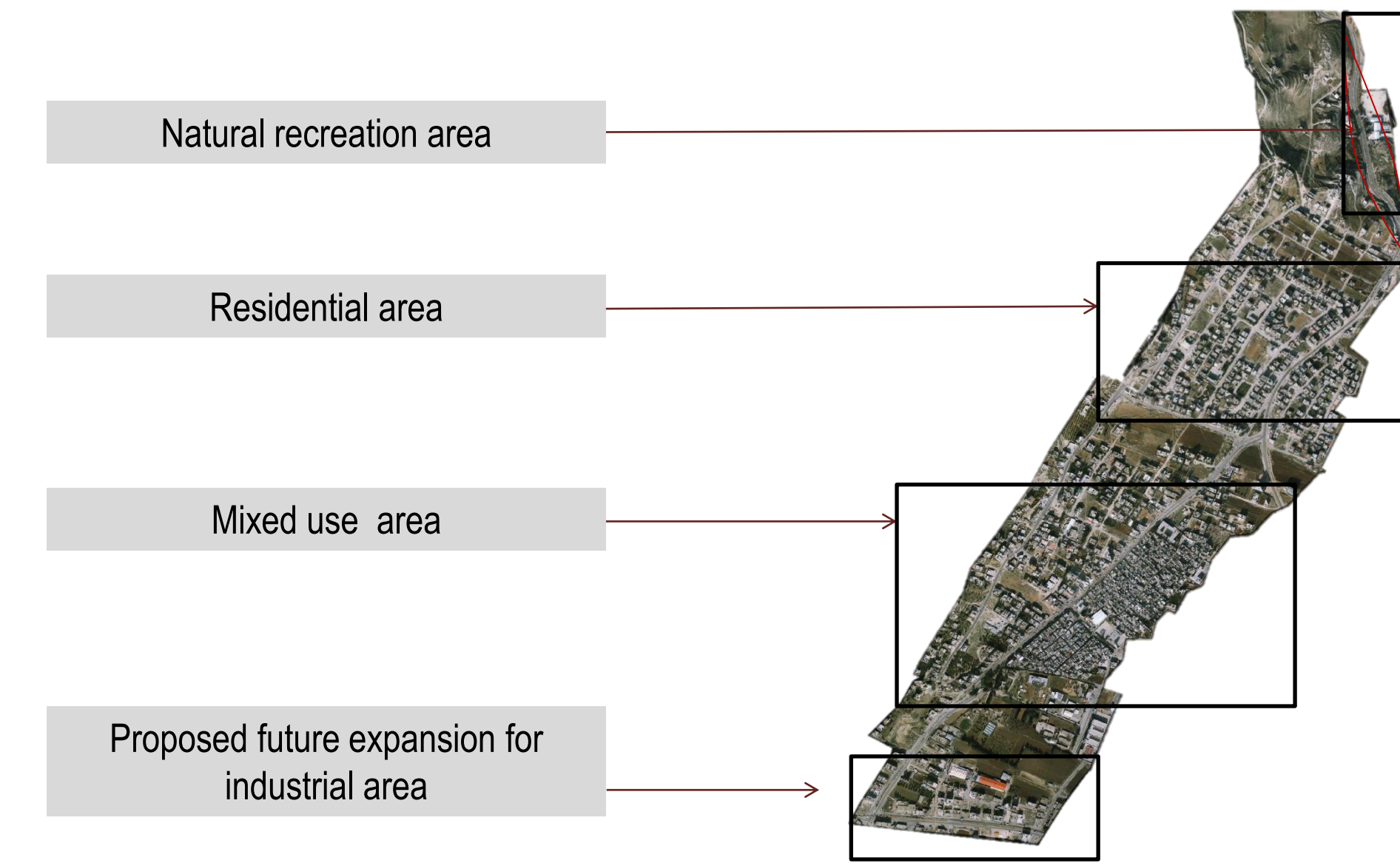
- Main road connect Nablus with other cities
- Historically , Main entrance of the city for trade and economy
- Hard topography make a good challenge to develop the area

Site analysis

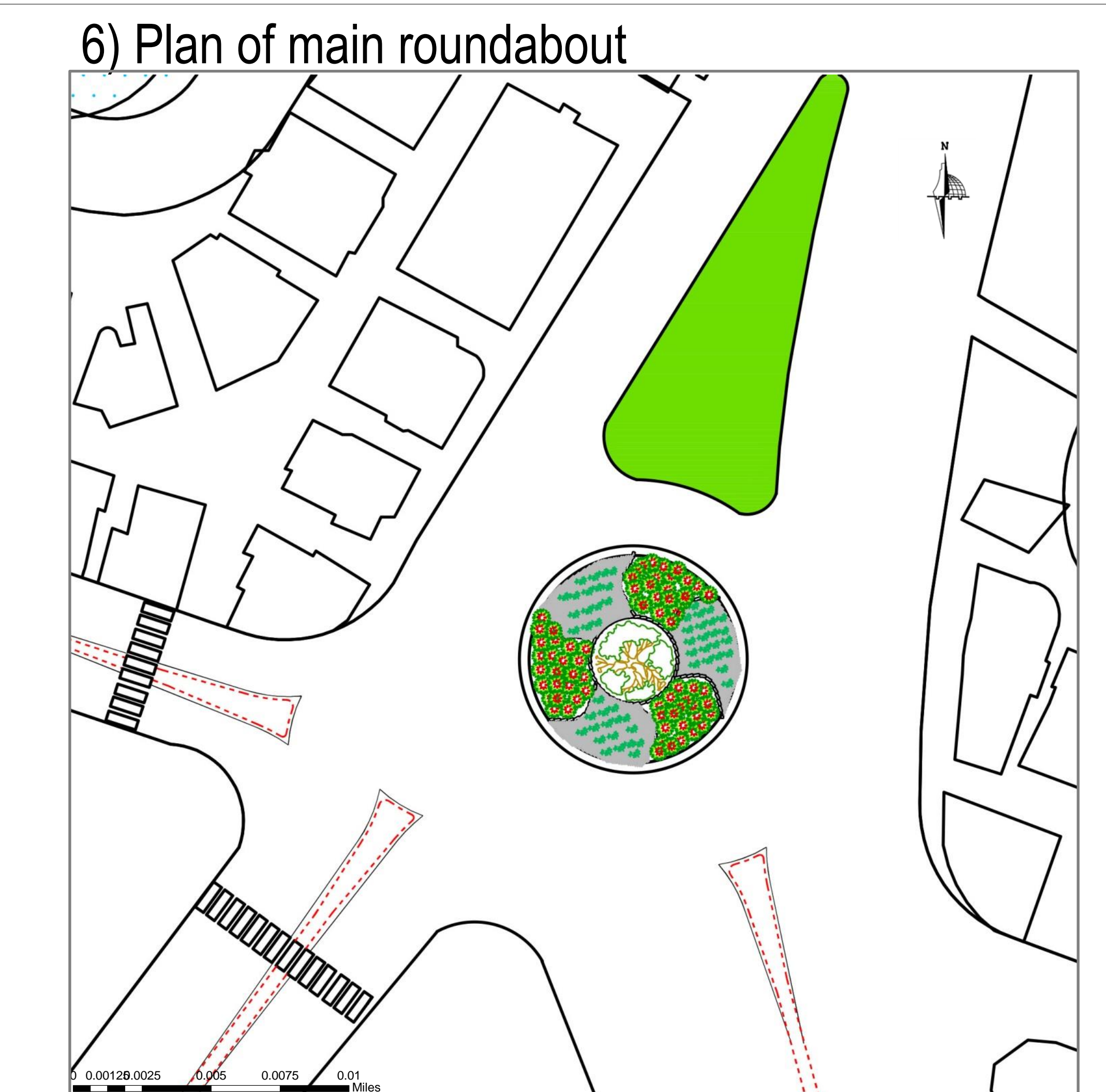
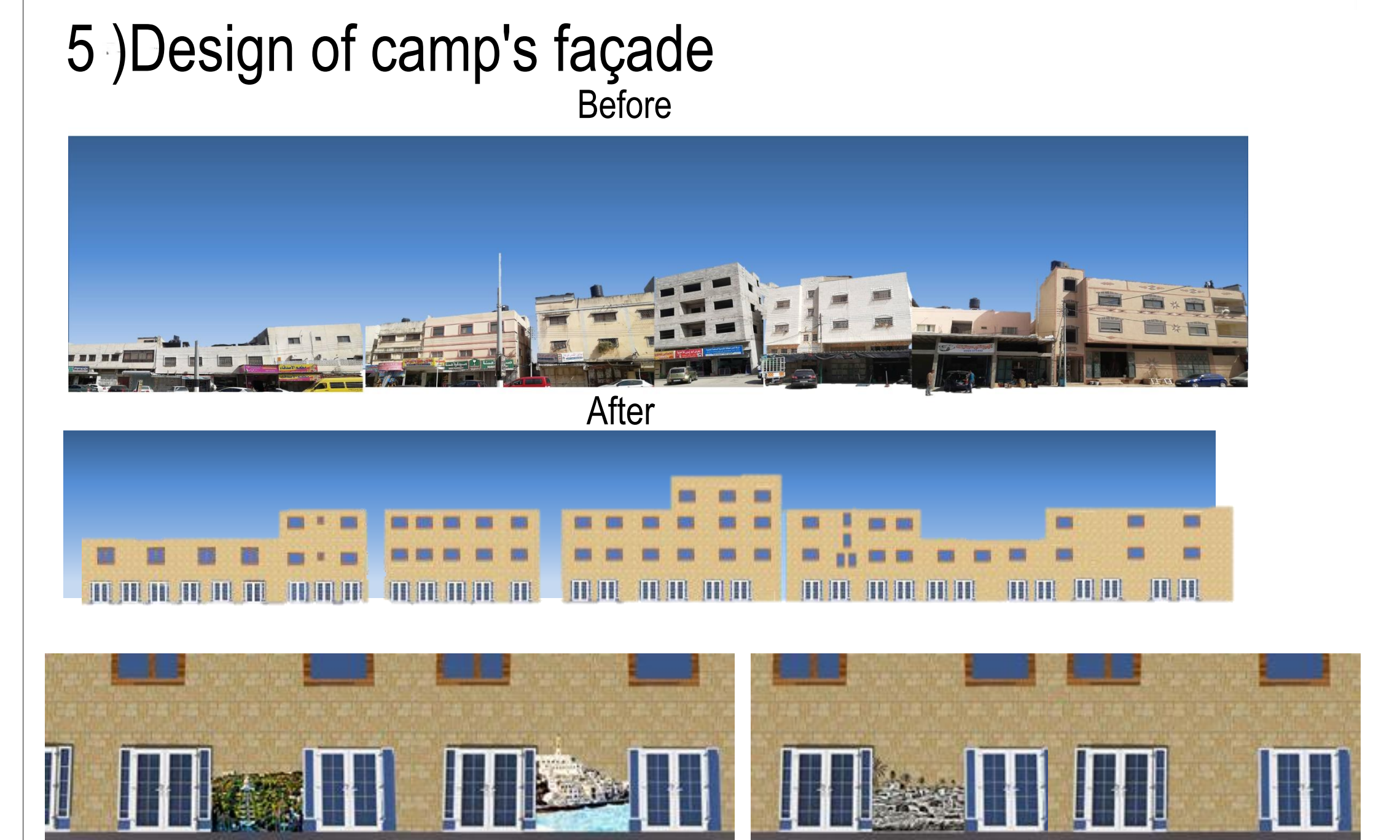
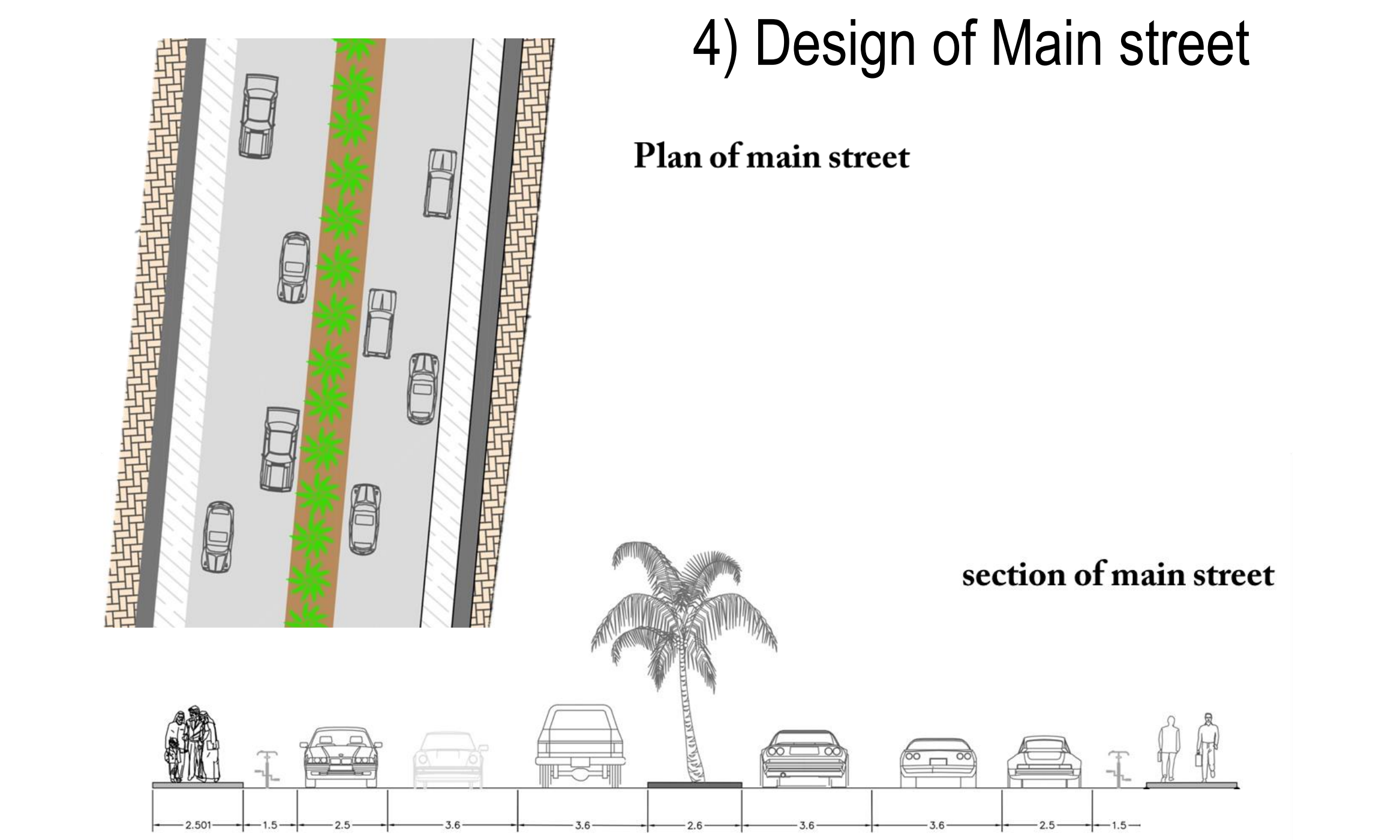
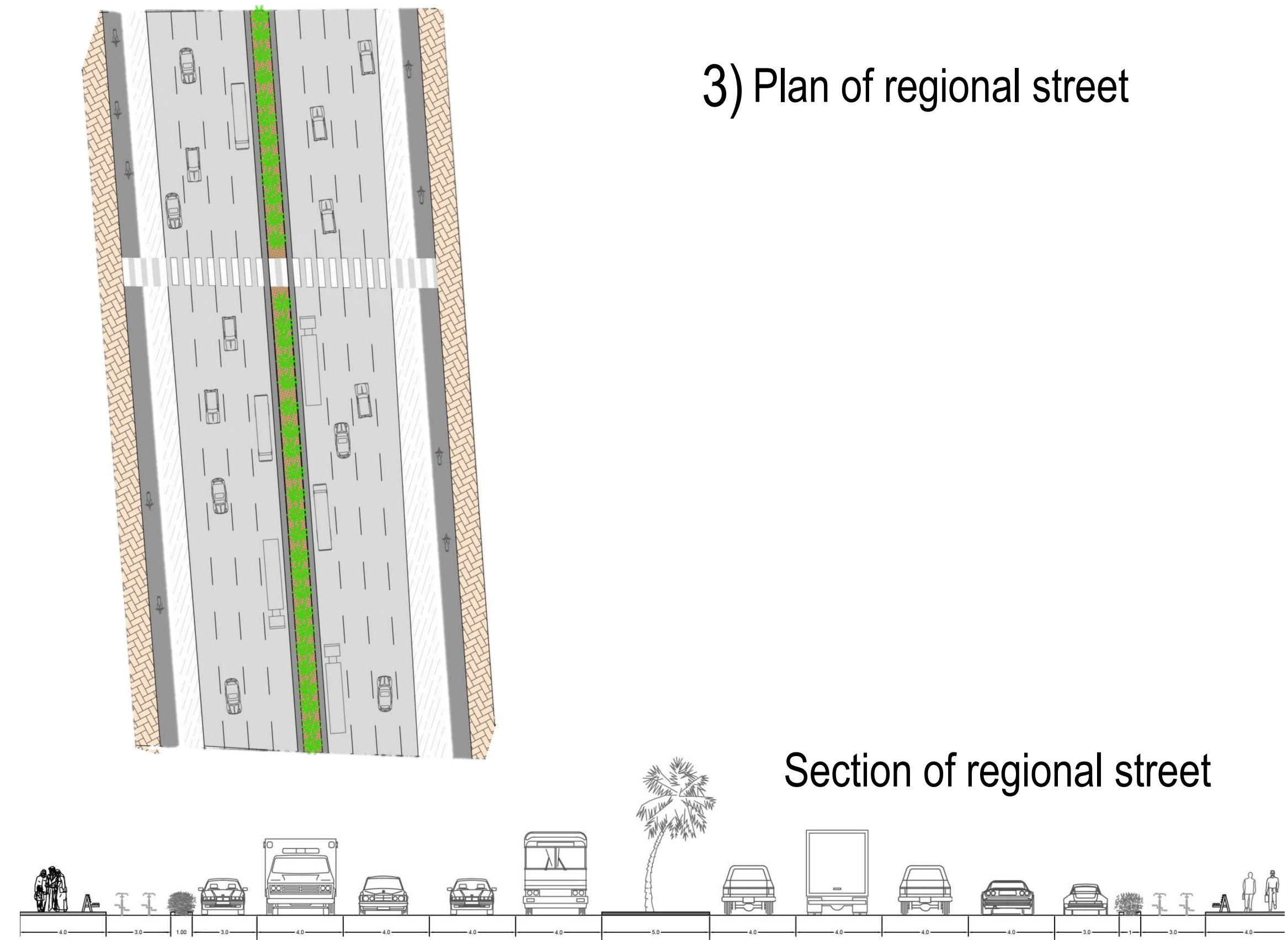


Natural analysis

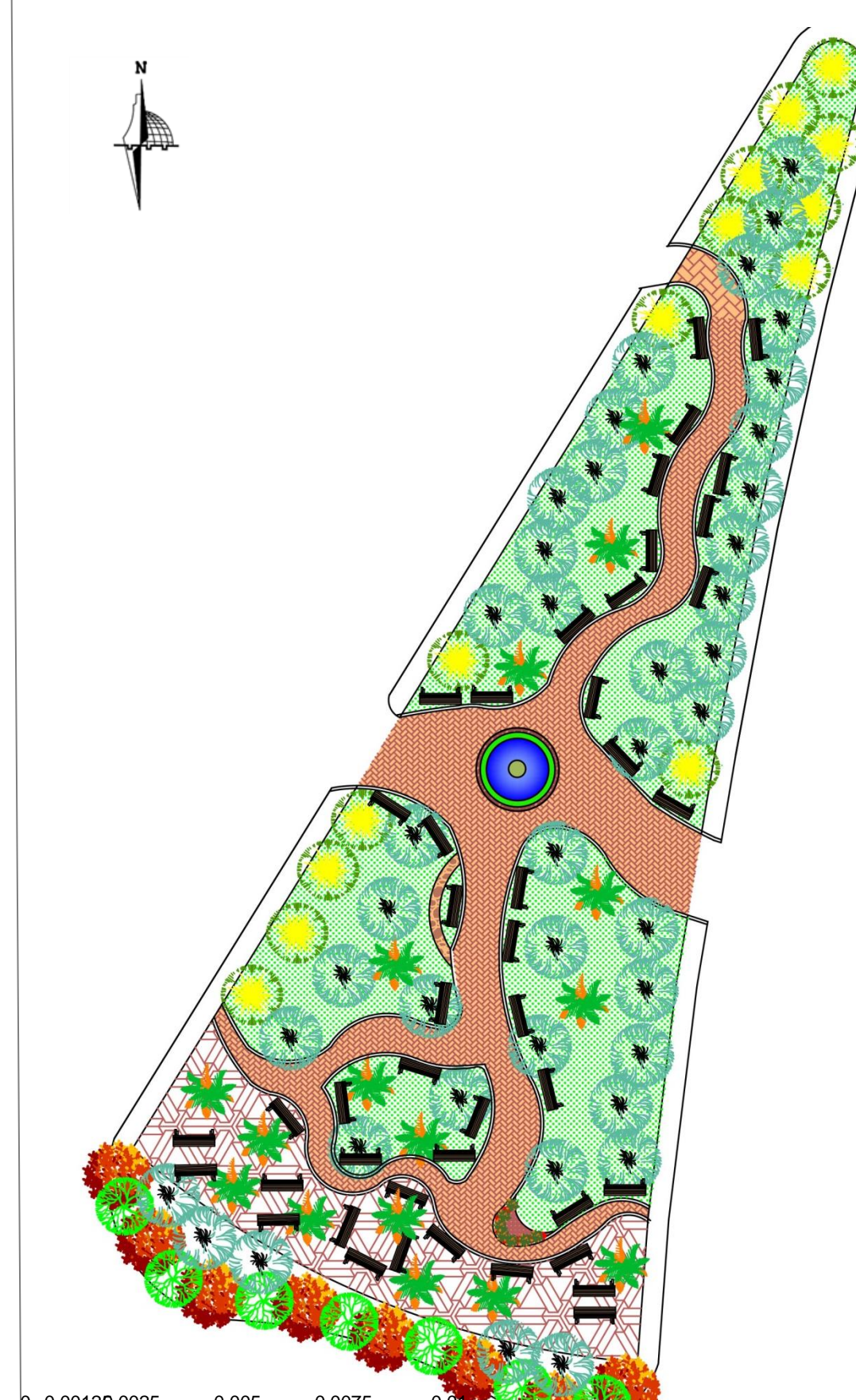
Final approach



Proposed projects



1) Design of open space



2) Proposed plan for civic center

