



**Al-Najah National University
Faculty of Engineering
Urban Planning Department**

**Graduation Project 2
" Urban Transport Planning "**

**Dr. Ali Abd-Alhameed
Dr. Zahraa Zawawi**

Ala' Ibraheem Ahmad

1

Study area diagnosis

- 1-qalqilia city importance: "Why qalqilia city for the project!!"
- 2-Historical expansion of the city of qalqilia.
- 3- qalqilia city expansion during the years.

2

Qalqilia city roads Diagnosis

3

ANALYSIS AND STRATEGIC PLANNING

- 1-SWOT Analysis
- 2-Strength Map
- 3-Weaknesses map

Main Goals

Main needs

Vision statement

4

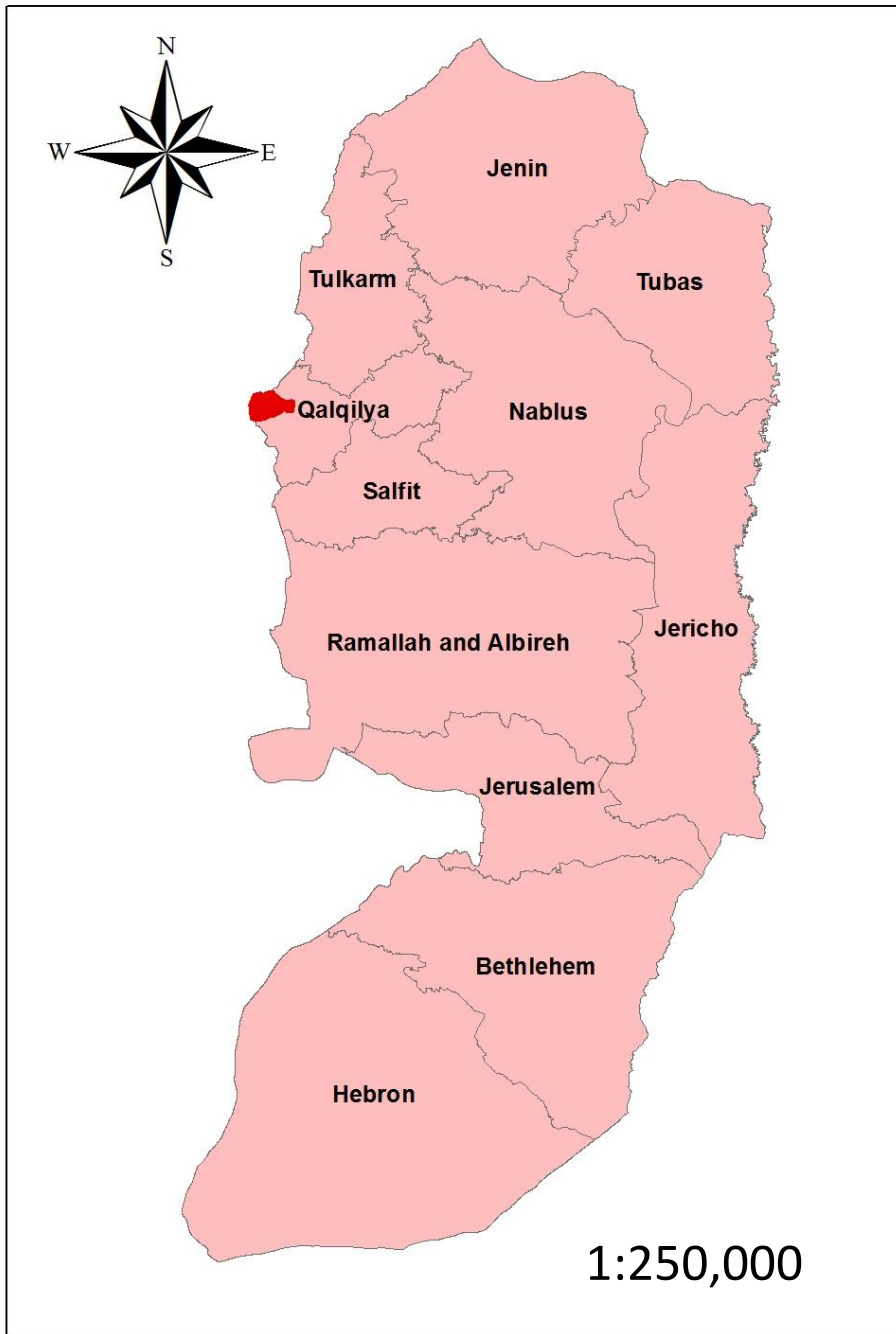
PLAN PREPARATION AND DETAILED PLANNING

5

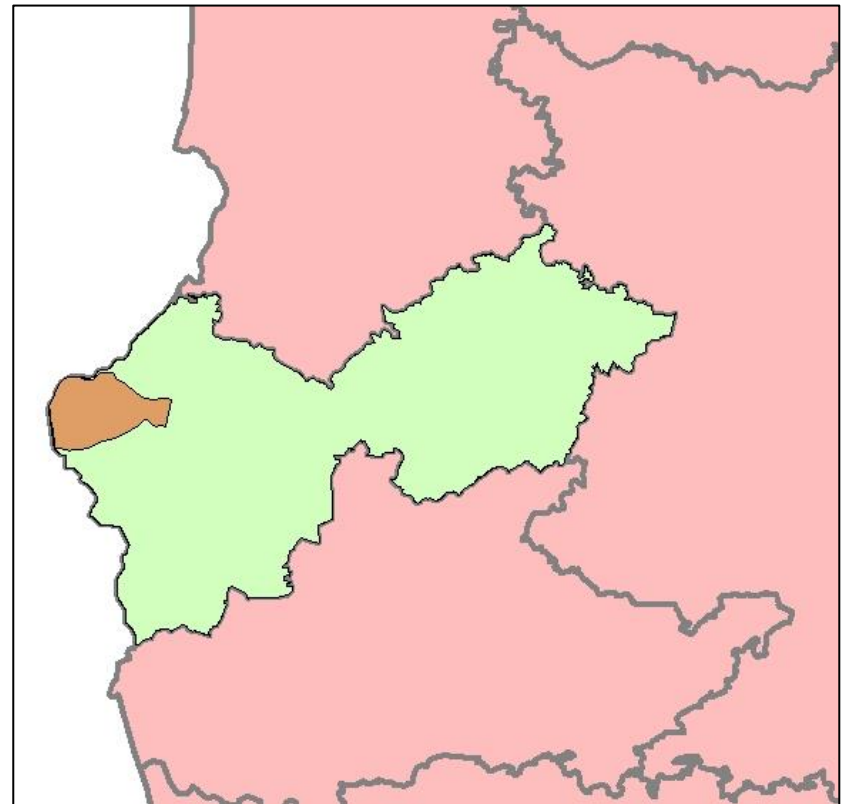
Conclusion and recommendations

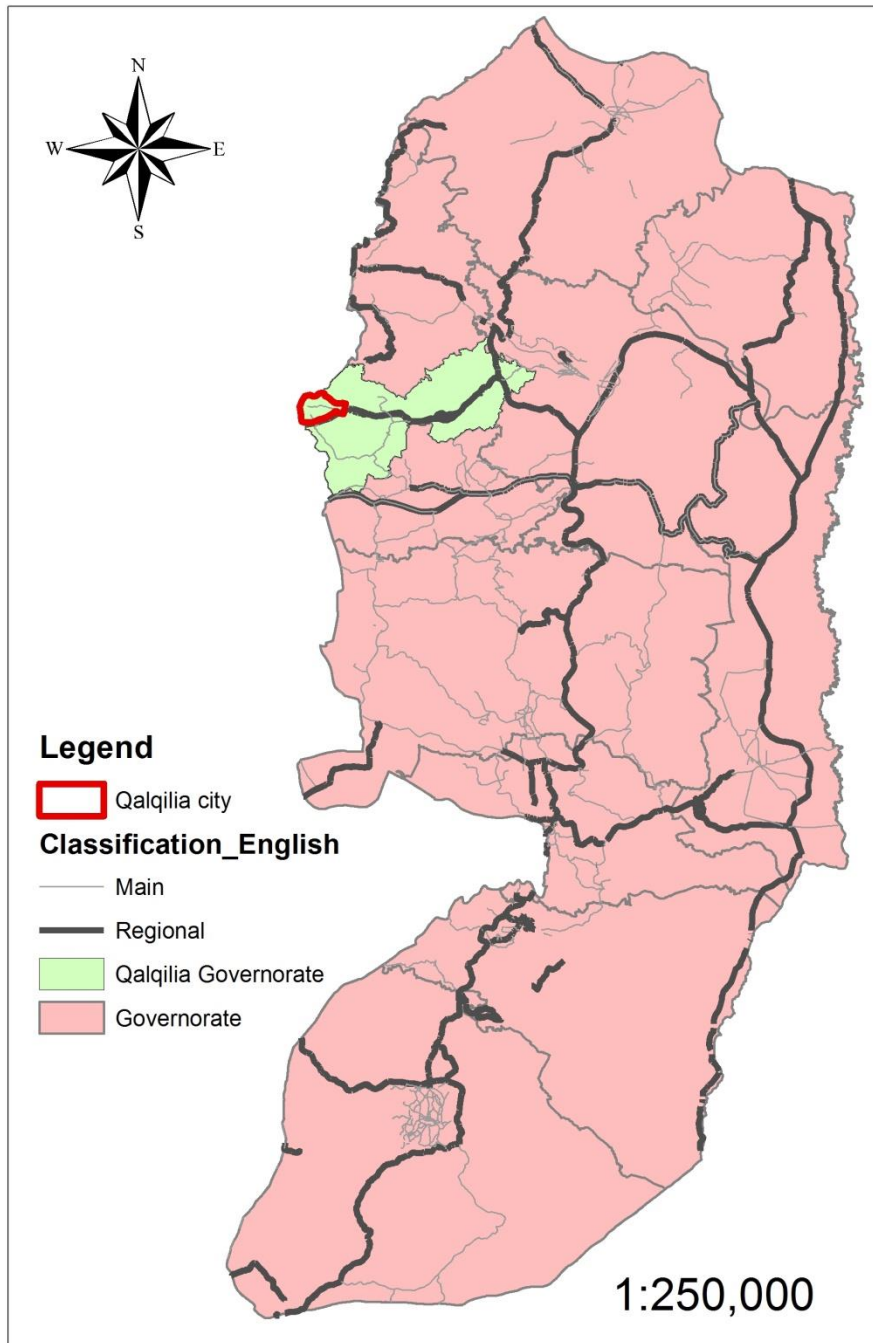
Study area diagnosis

qalqilia city importance: "Why qalqilia city for the project!!"



Qalqilia governorate location according to other West Bank governorates.

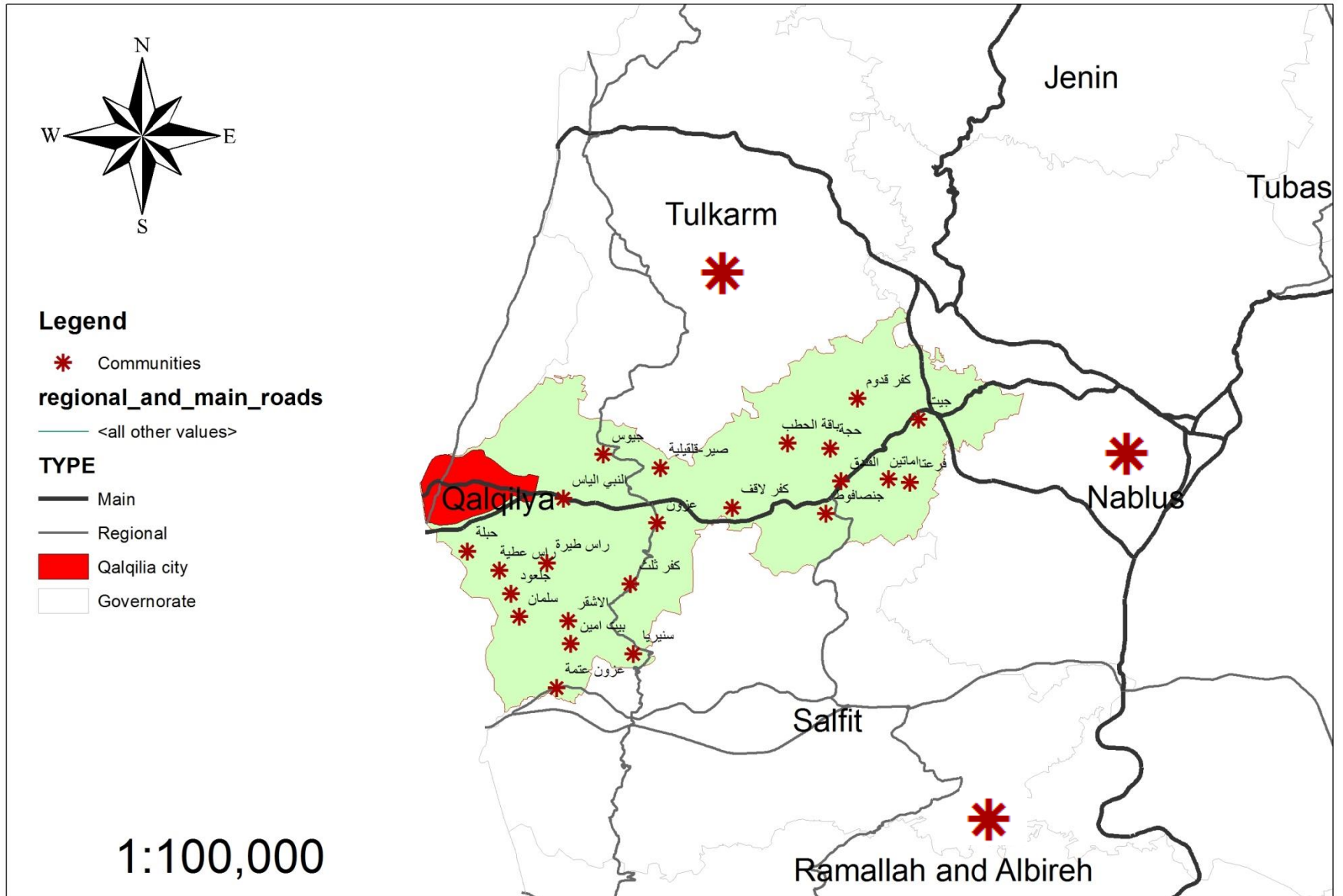




west bank governorates connected by main and regional roads " Qalqilia governorate location "

There is a regional road linking Qalqilya with Nablus. This is a positive point for the governorate, where it is easy to reach the governorate and connect with the other governorates

communities that connected to qalqilia city

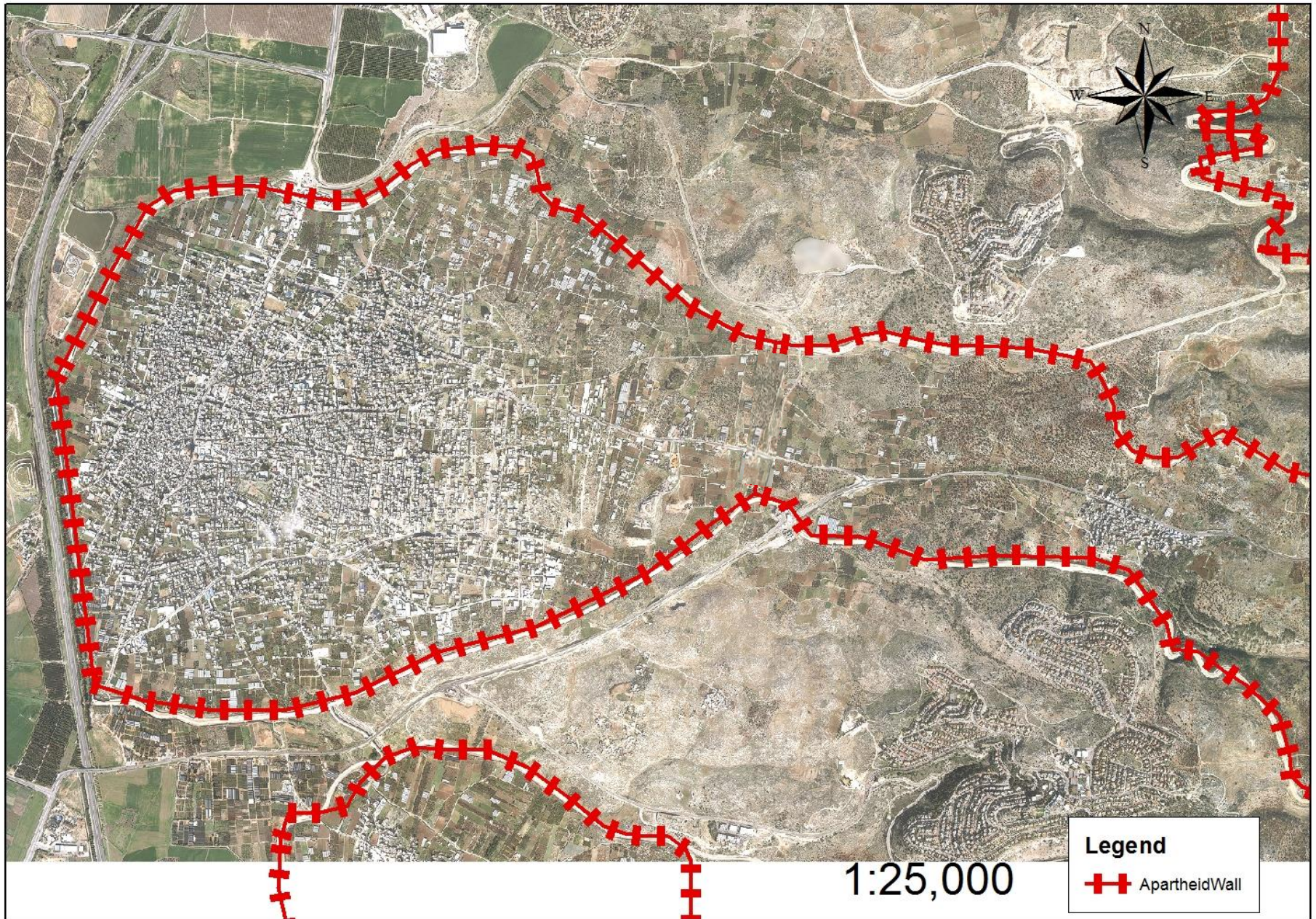


Why qalqilia city for the project ?

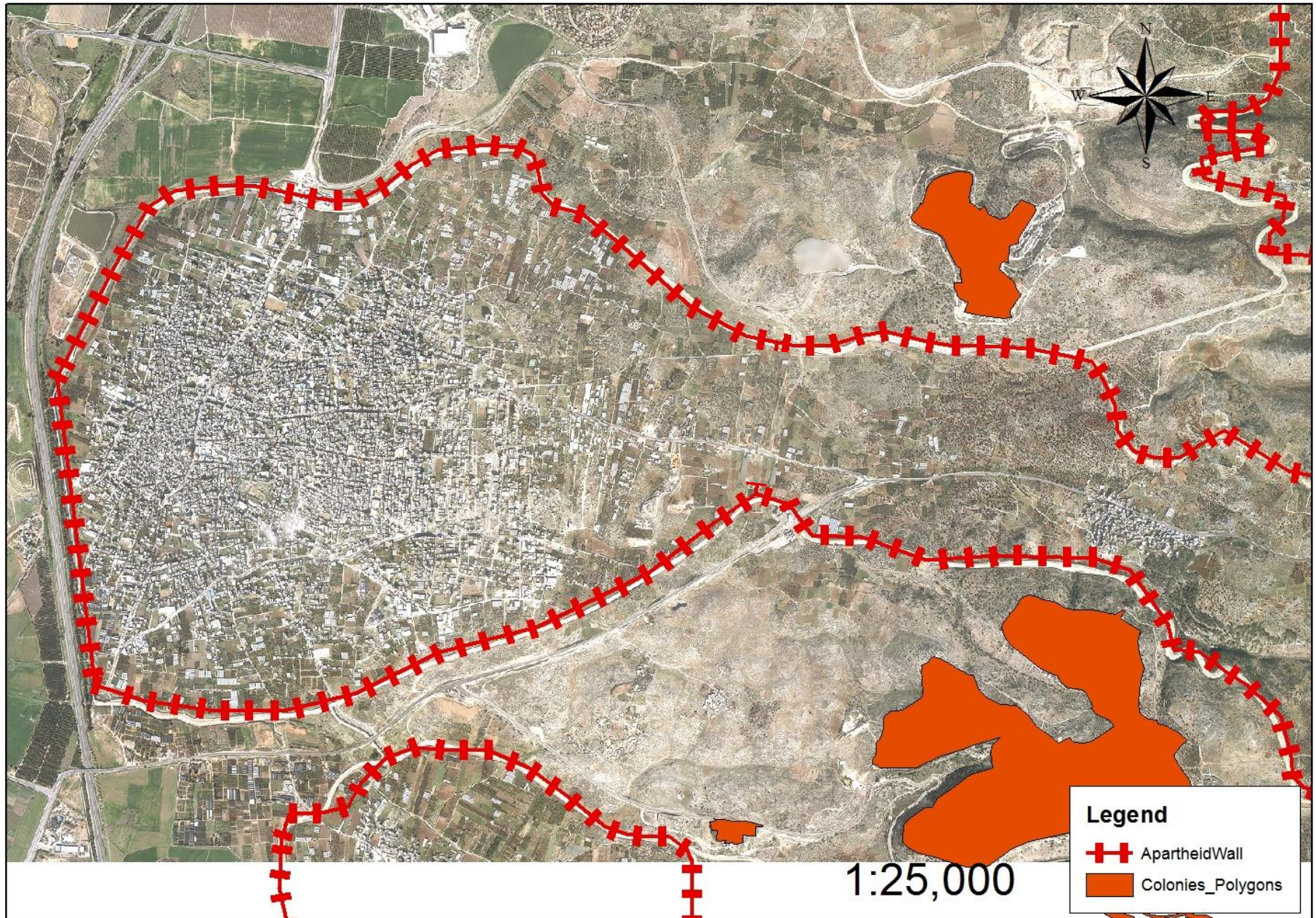
1

The political situation in the city

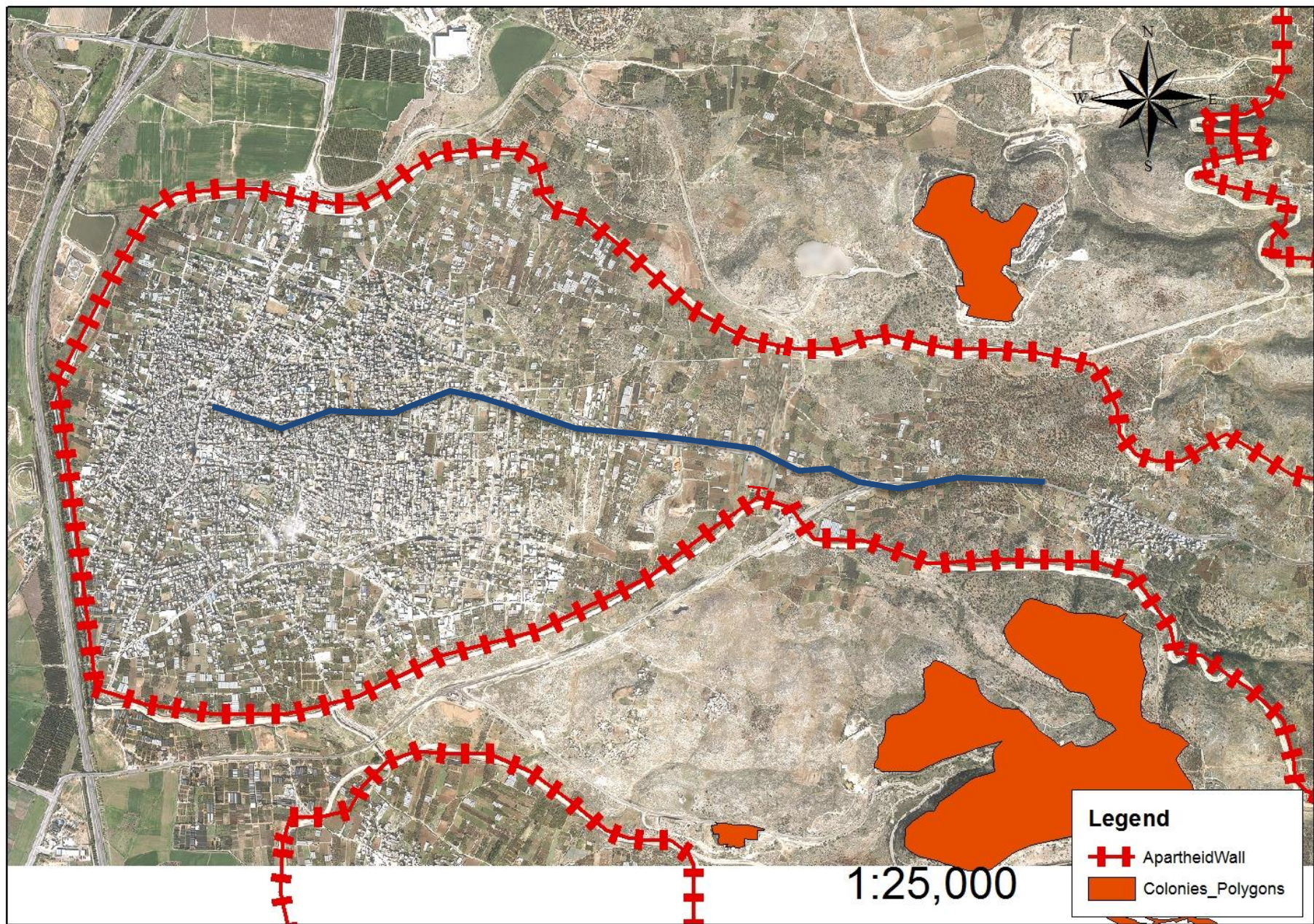
the political situation in the city



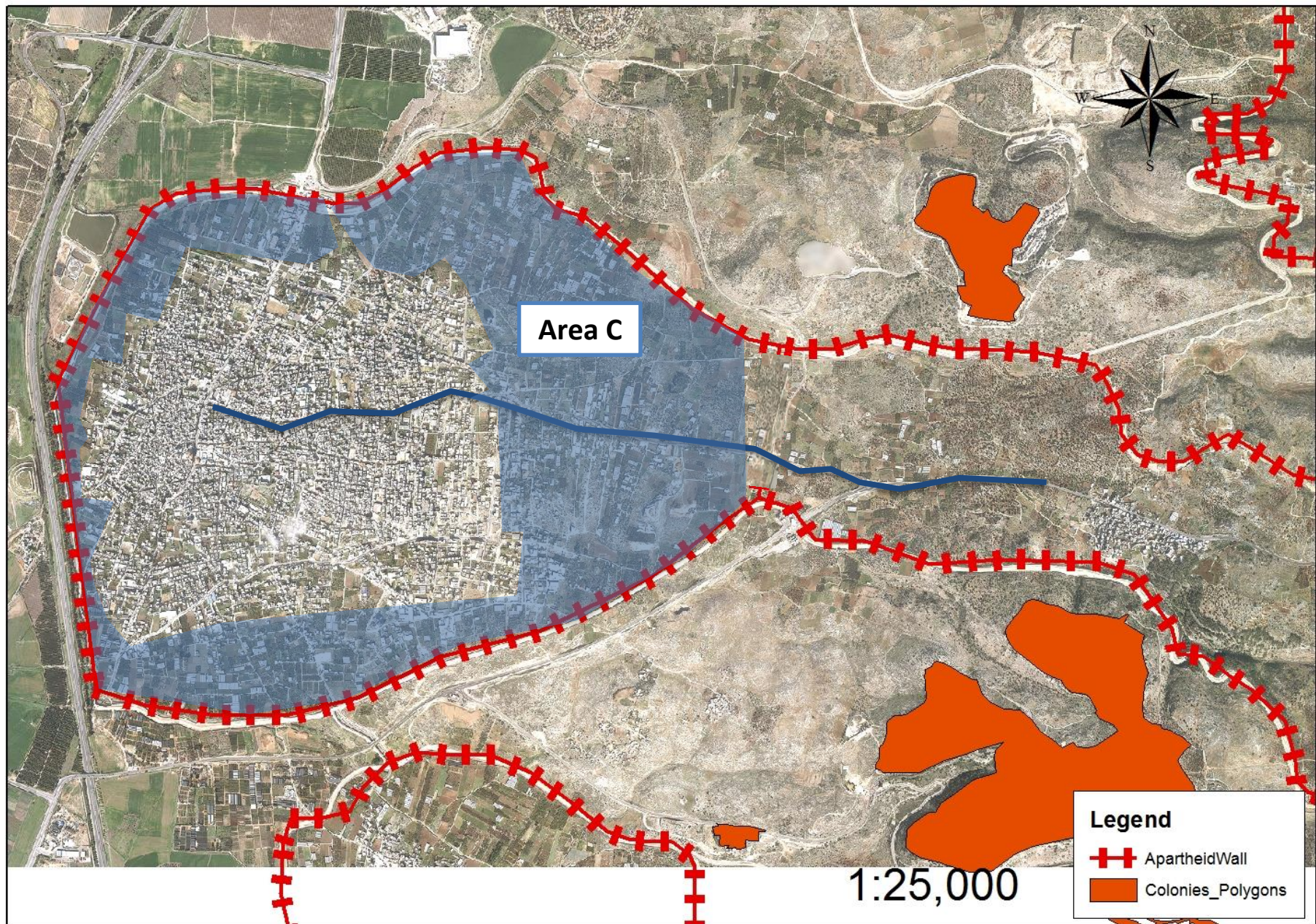
the political situation in the city



the political situation in the city



the political situation in the city



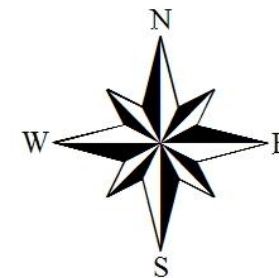
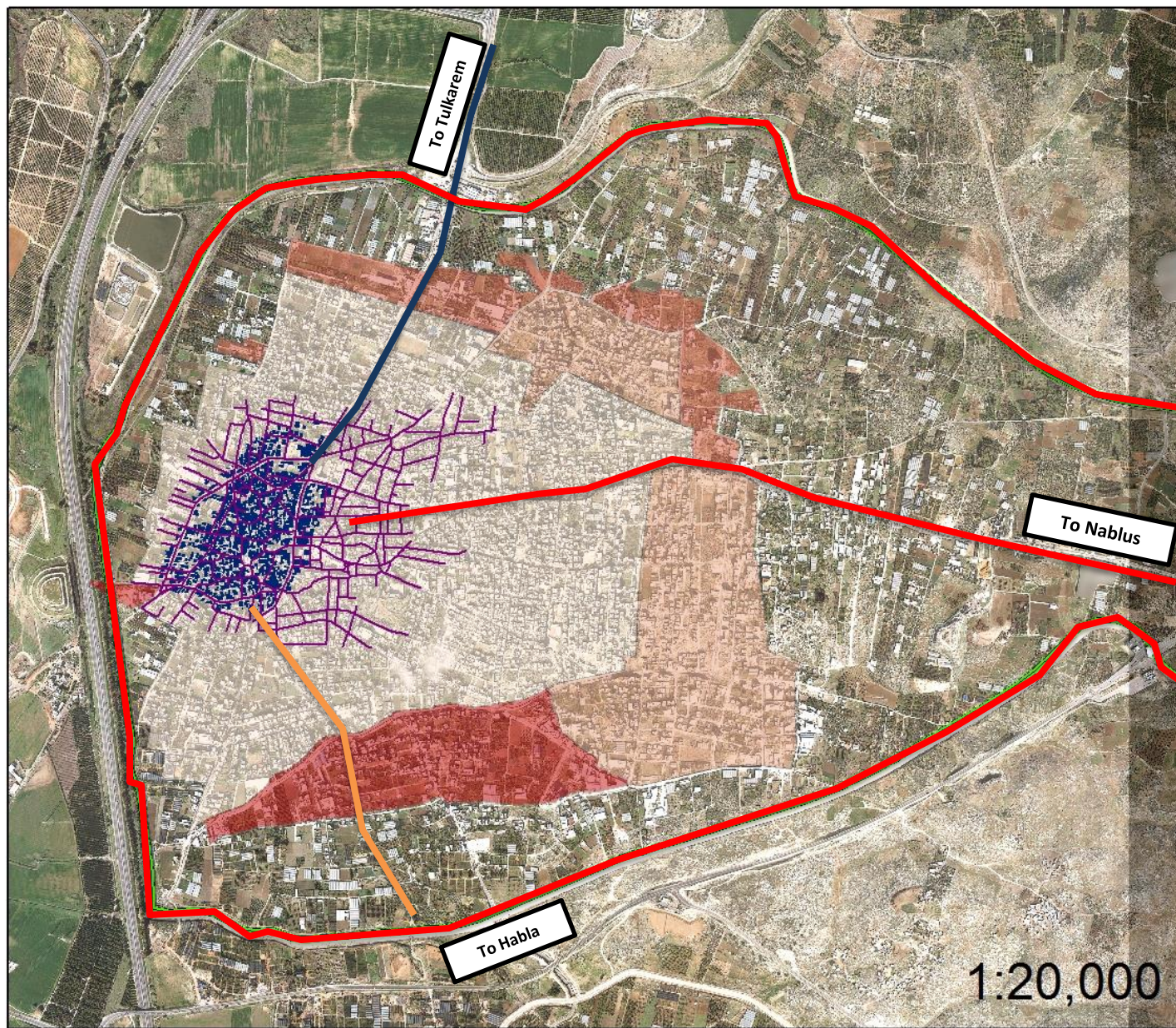
2

Population density and construction is
increasing dramatically

Historical development of streets and buildings

Population studies

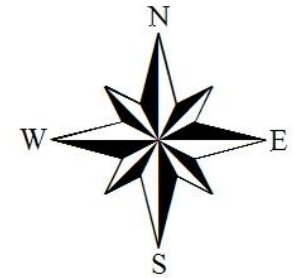
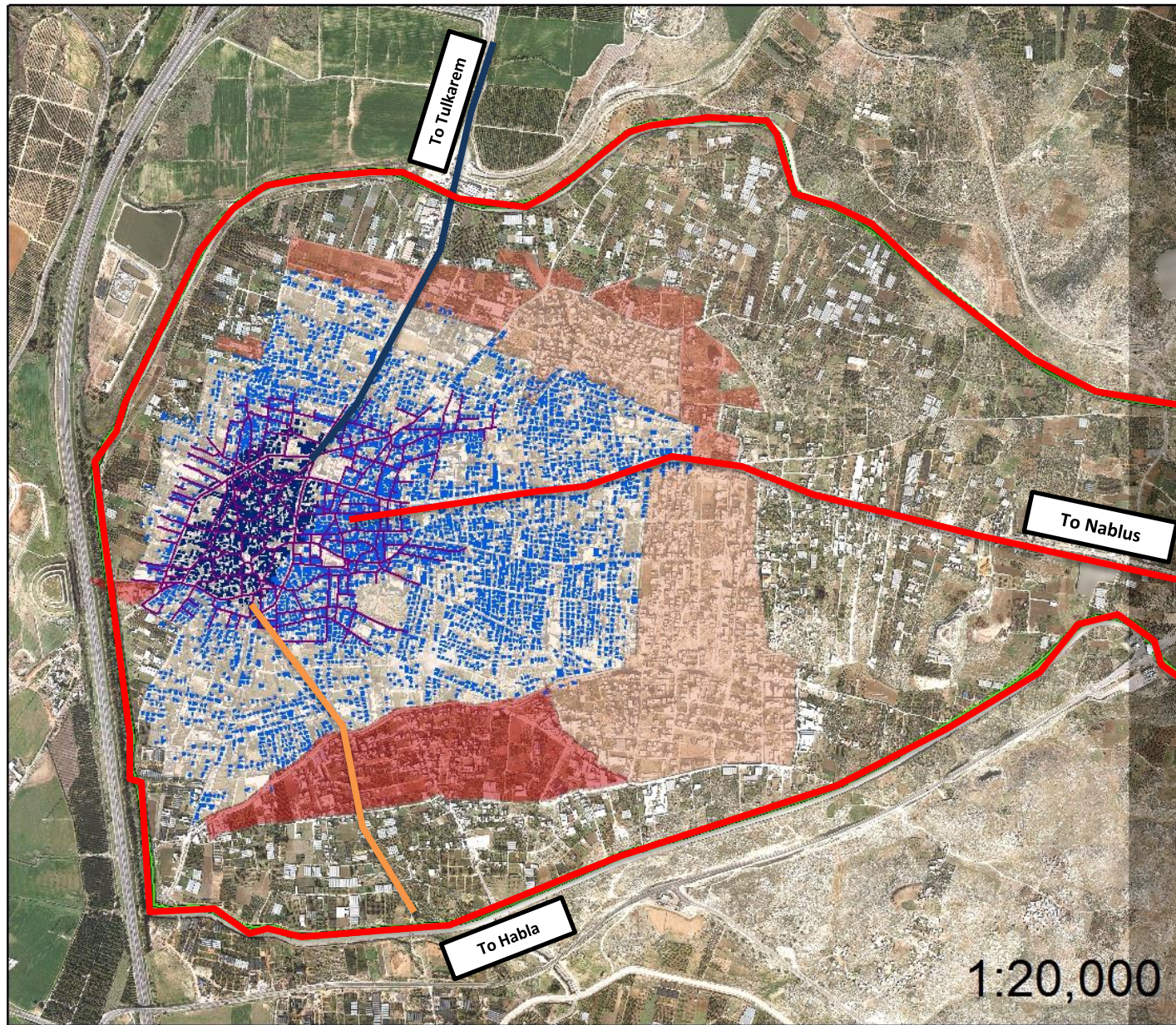
Historical development of streets and buildings



Legend

- old_road
 - Separation Wall
 - old_city_building
- Density-Extended Areas**
- Year**
- 1974
 - 1983
 - 1997
 - 2000

Historical development of streets and buildings



Legend

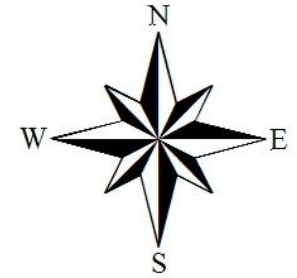
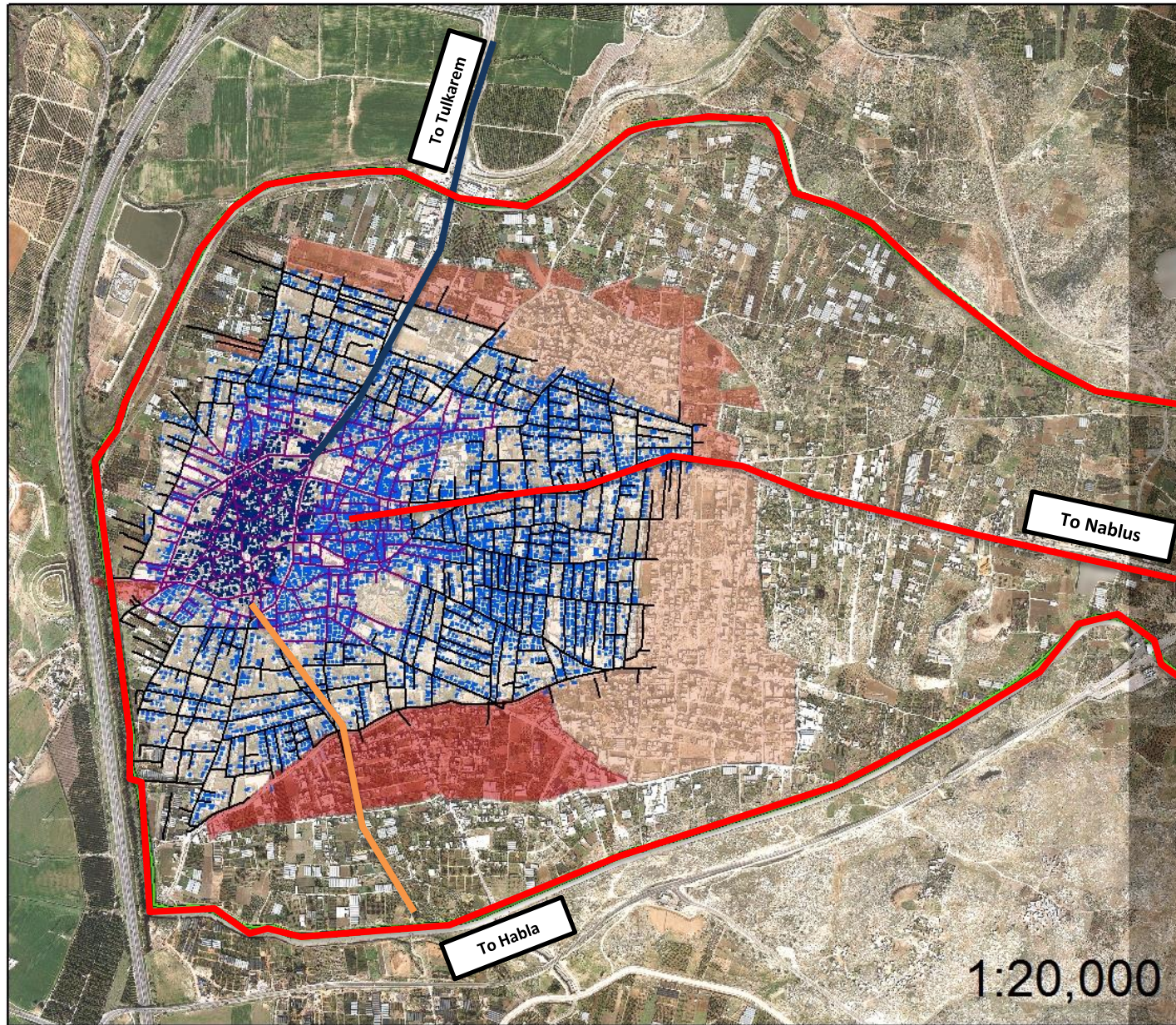
- old_road
- Separation Wall
- building_1974
- old_city_building

Density-Extended Areas

Year

- 1974
- 1983
- 1997
- 2000

Historical development of streets and buildings



Legend

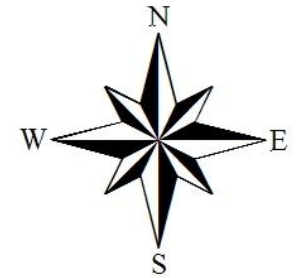
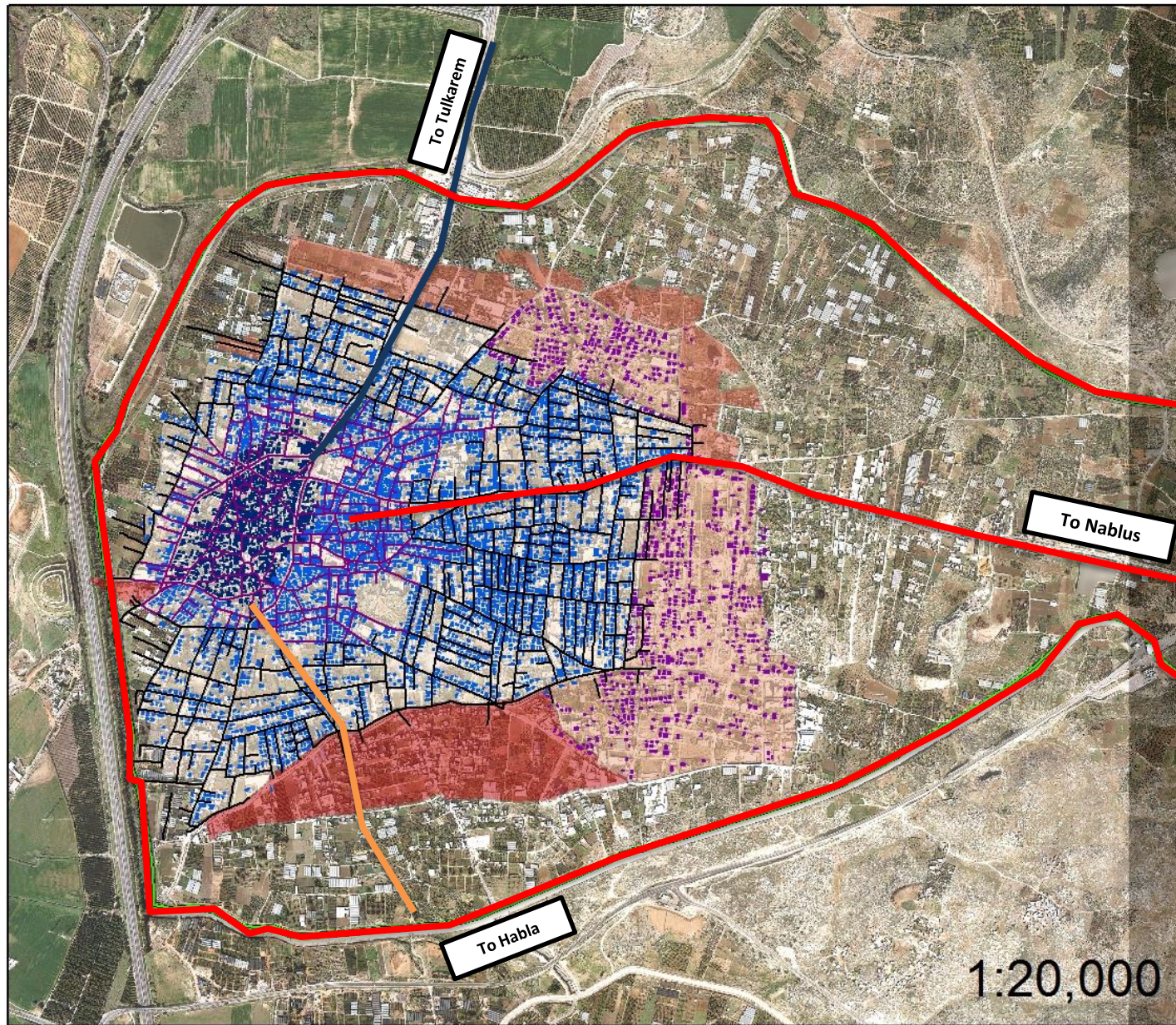
- old_road
- road1974
- Separation Wall
- building_1974
- old_city_building

Density-Extended Areas

Year

- 1974
- 1983
- 1997
- 2000

Historical development of streets and buildings



Legend

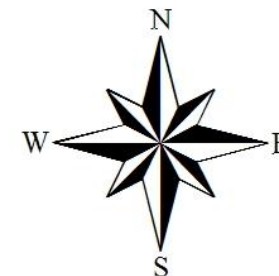
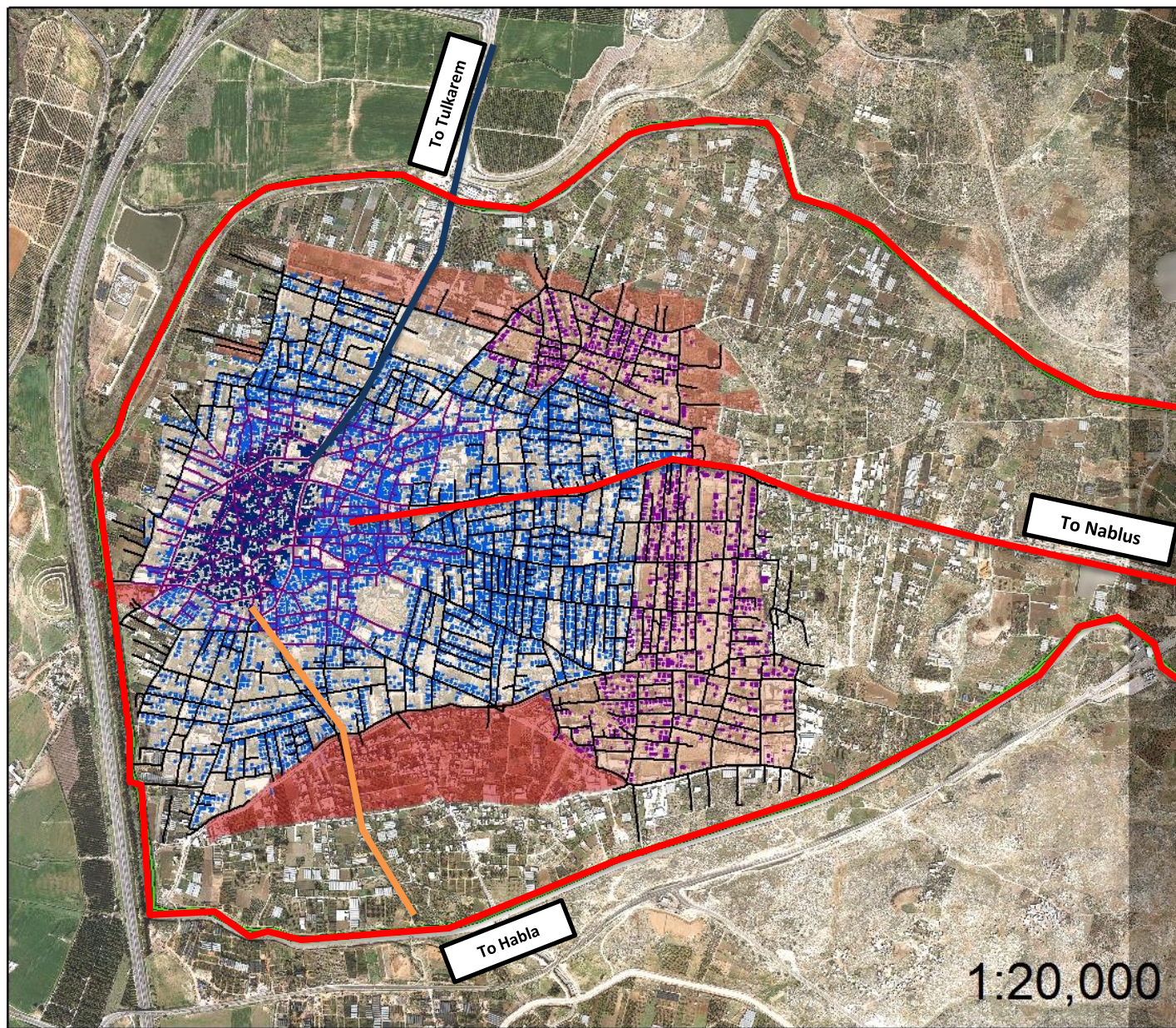
- old_road
- road1974
- Separation Wall
- building1983
- building_1974
- old_city_building

Density-Extended Areas

Year

- 1974
- 1983
- 1997
- 2000

Historical development of streets and buildings



Legend

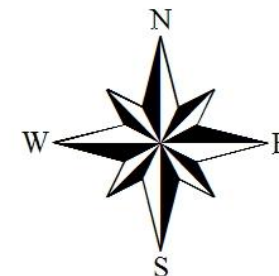
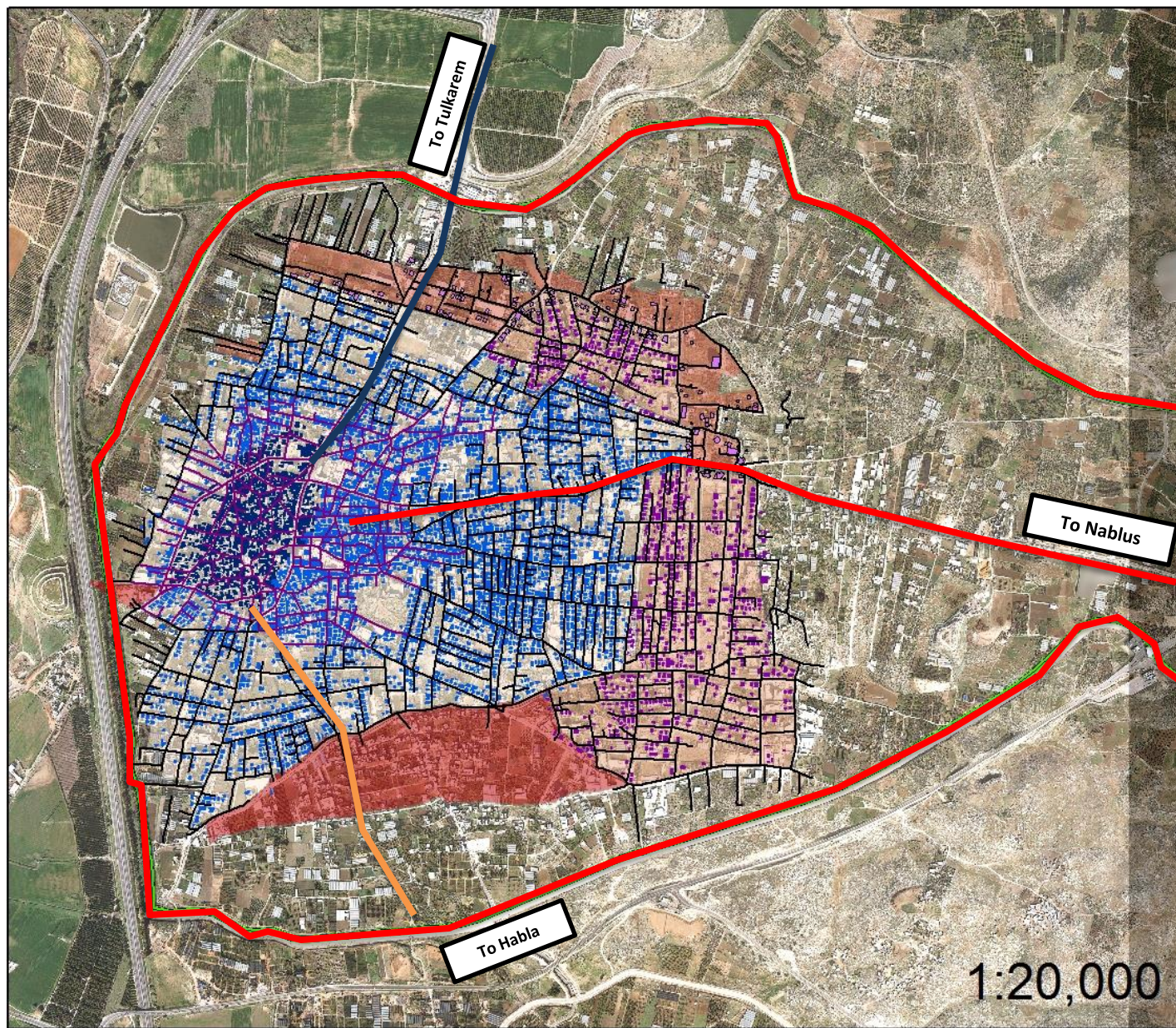
- old_road
- road1974
- road1983
- Separation Wall
- building1983
- building_1974
- old_city_building

Density-Extended Areas

Year

- 1974
- 1983
- 1997
- 2000

Historical development of streets and buildings



Legend

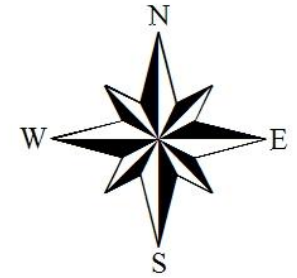
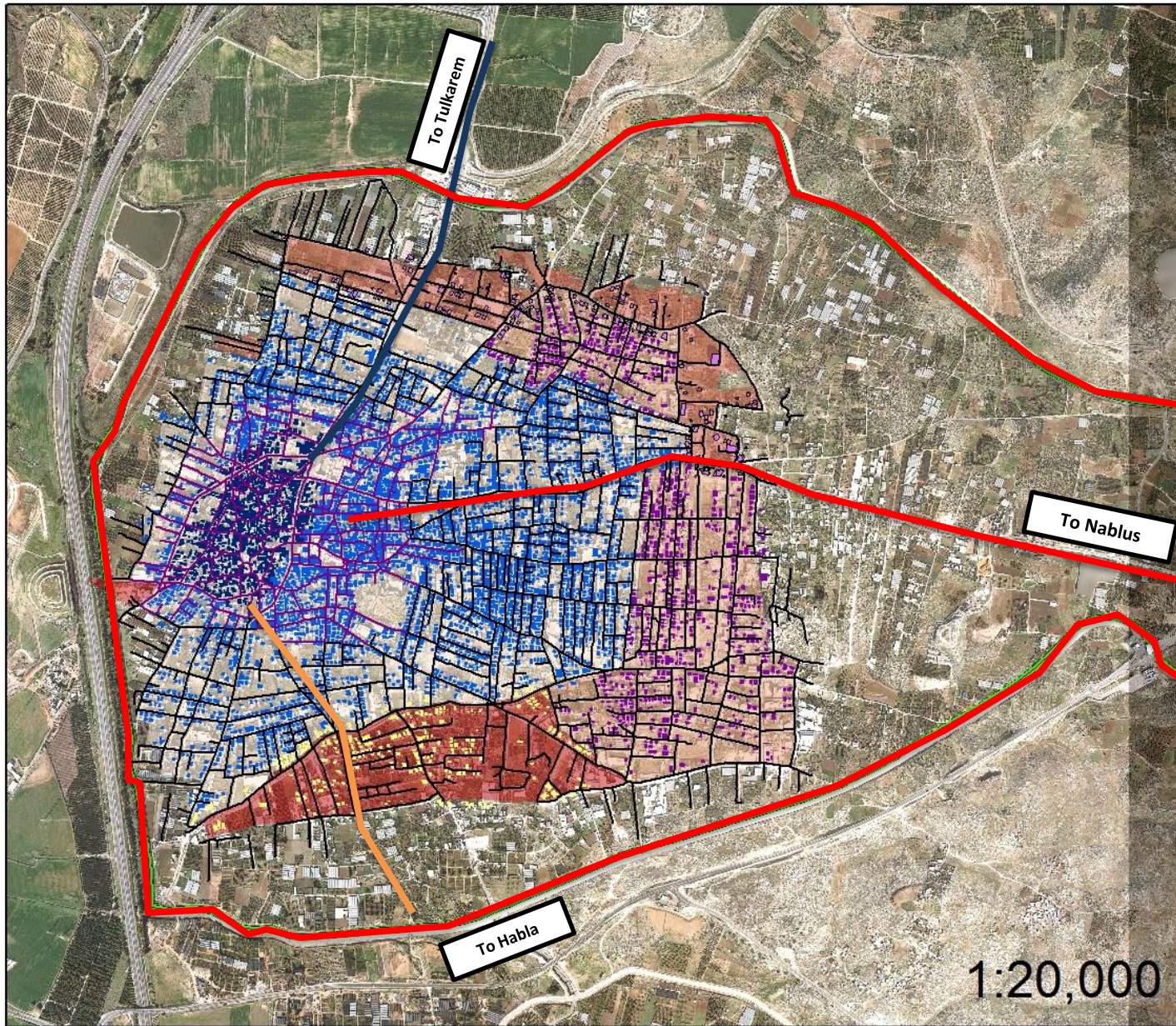
- old_road
- road1974
- road1983
- road1997
- Separation Wall
- building1997
- building1983
- building_1974
- old_city_building

Density-Extended Areas

Year

- 1974
- 1983
- 1997
- 2000

Historical development of streets and buildings



Legend

- old_road
- road1974
- road1983
- road2000
- road1997
- Separation Wall
- building2000
- building1997
- building1983
- building_1974
- old_city_building

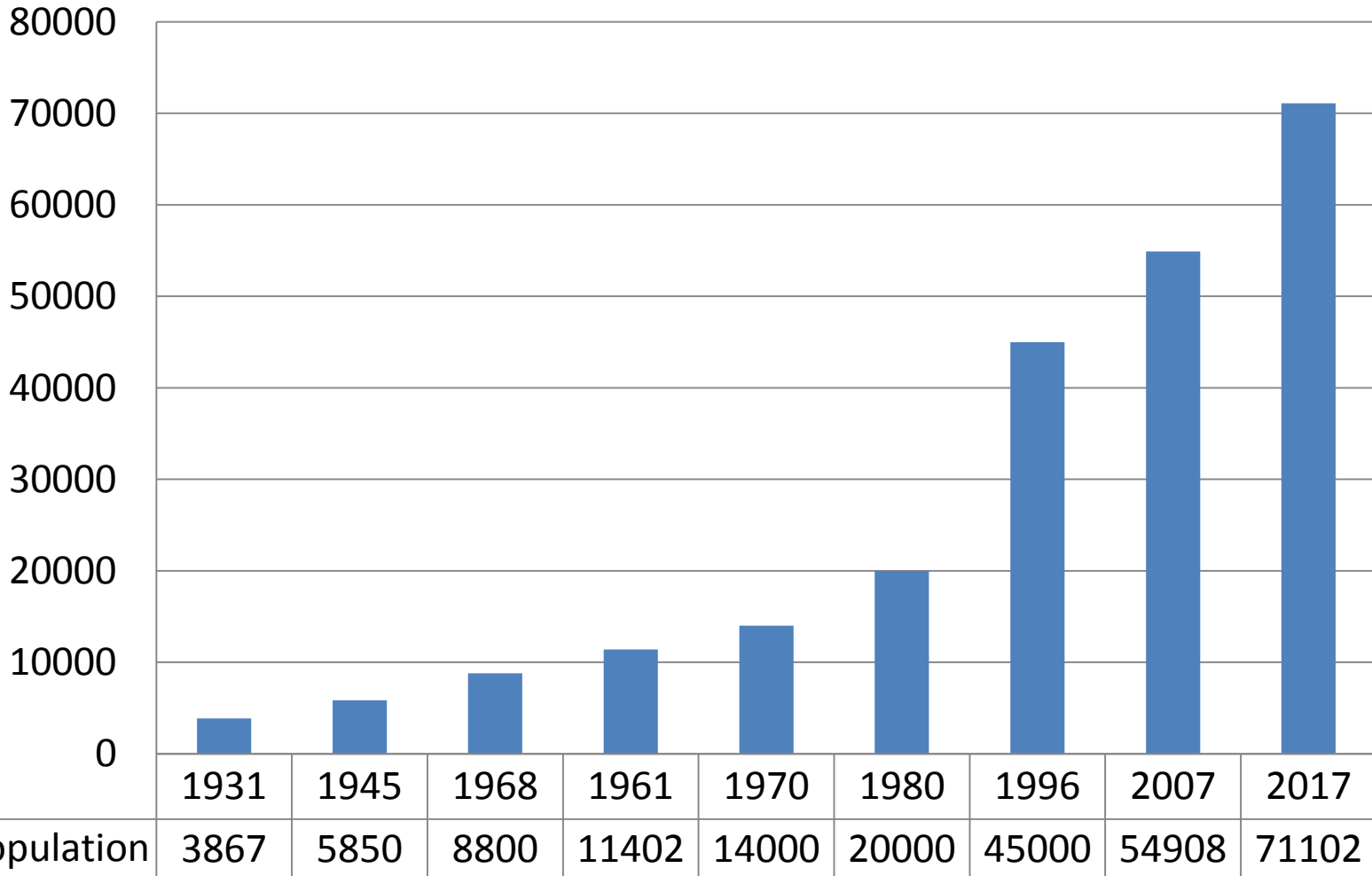
Density-Extended Areas

Year

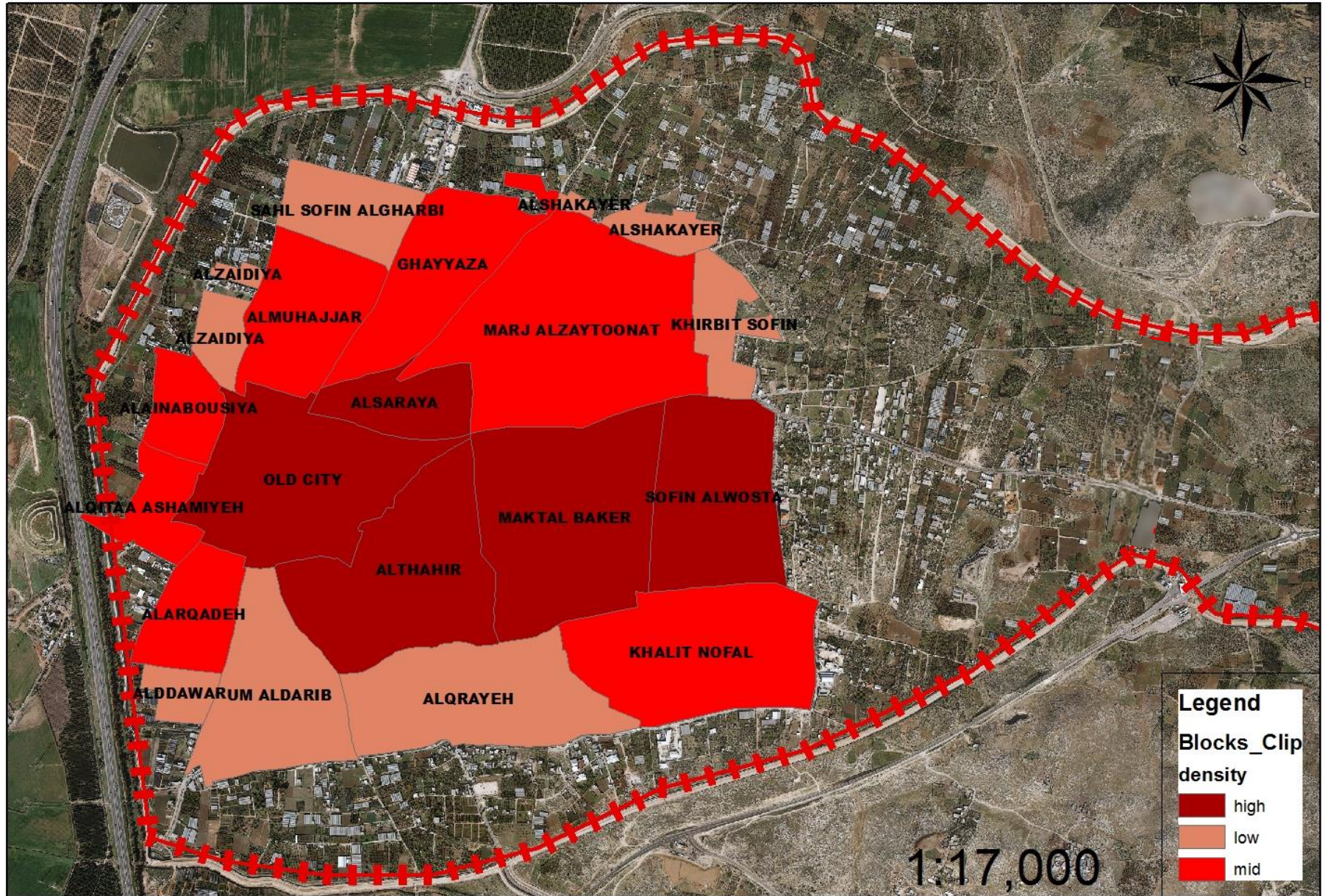
- 1974
- 1983
- 1997
- 2000

Population studies

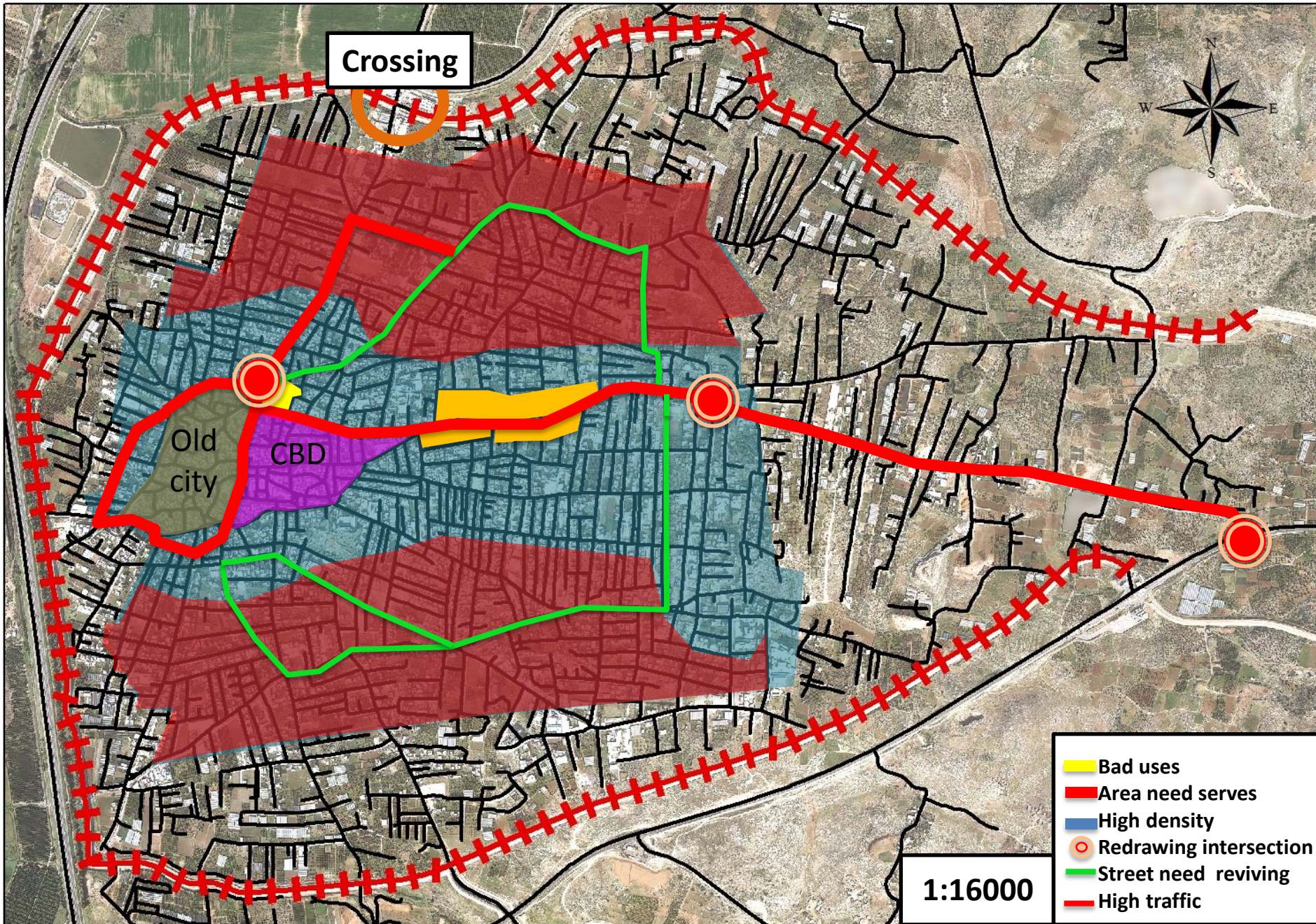
population



City neighborhoods density



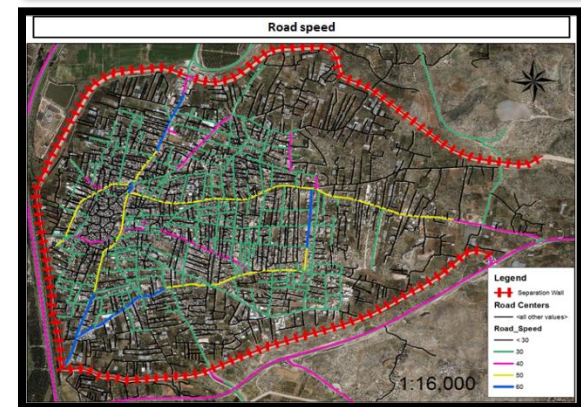
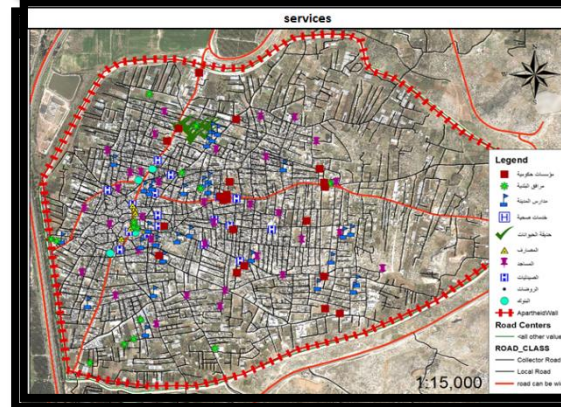
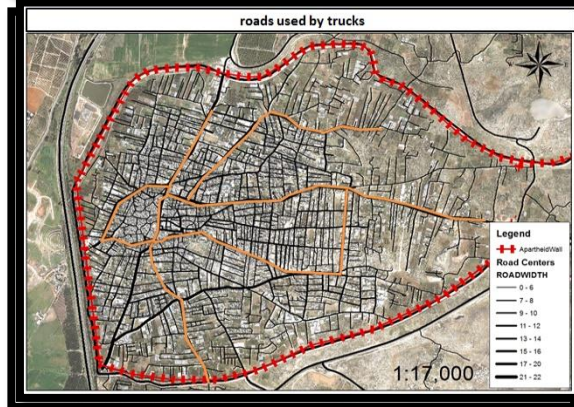
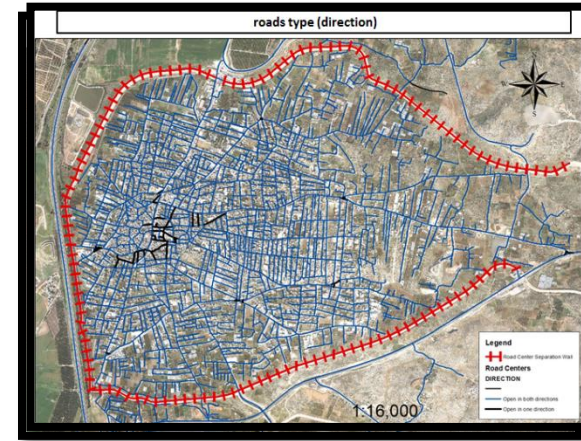
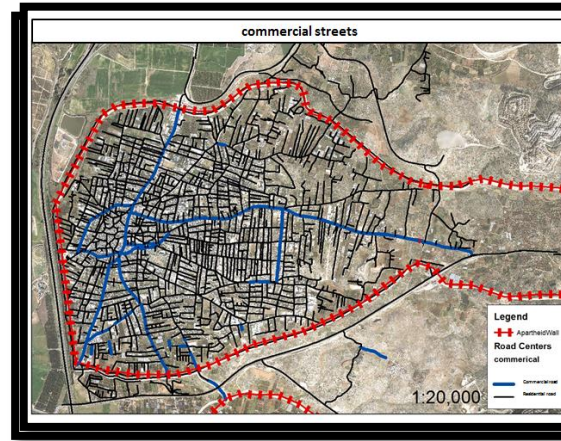
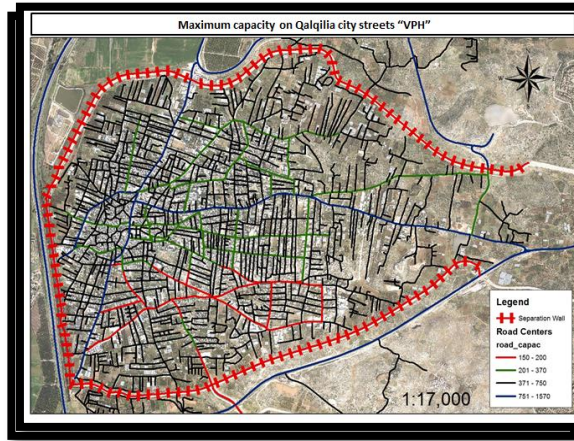
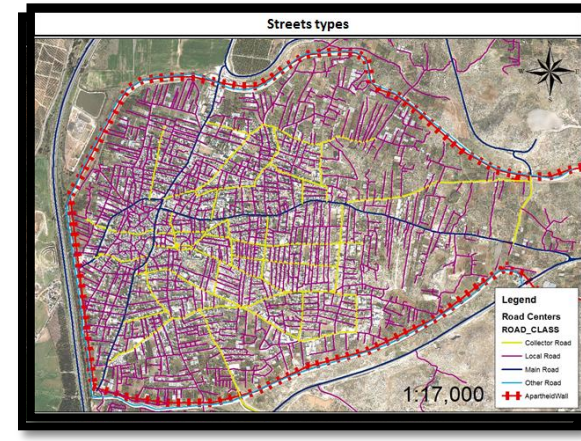
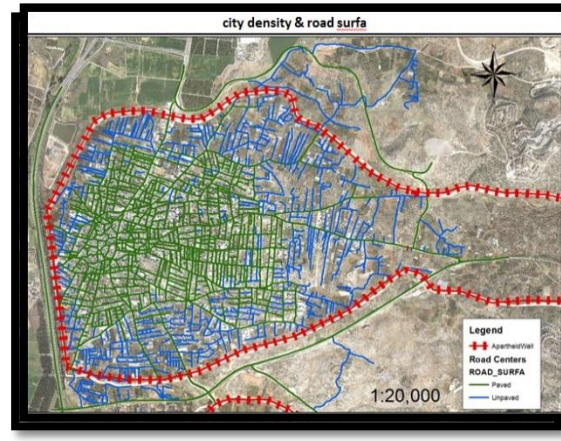
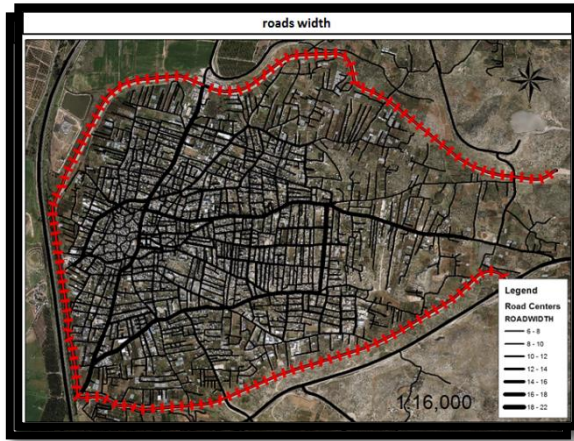
Problems in the city of Qalqiliya



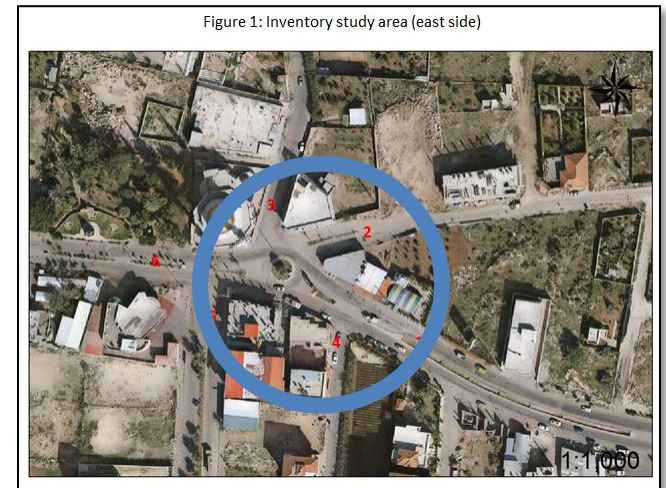
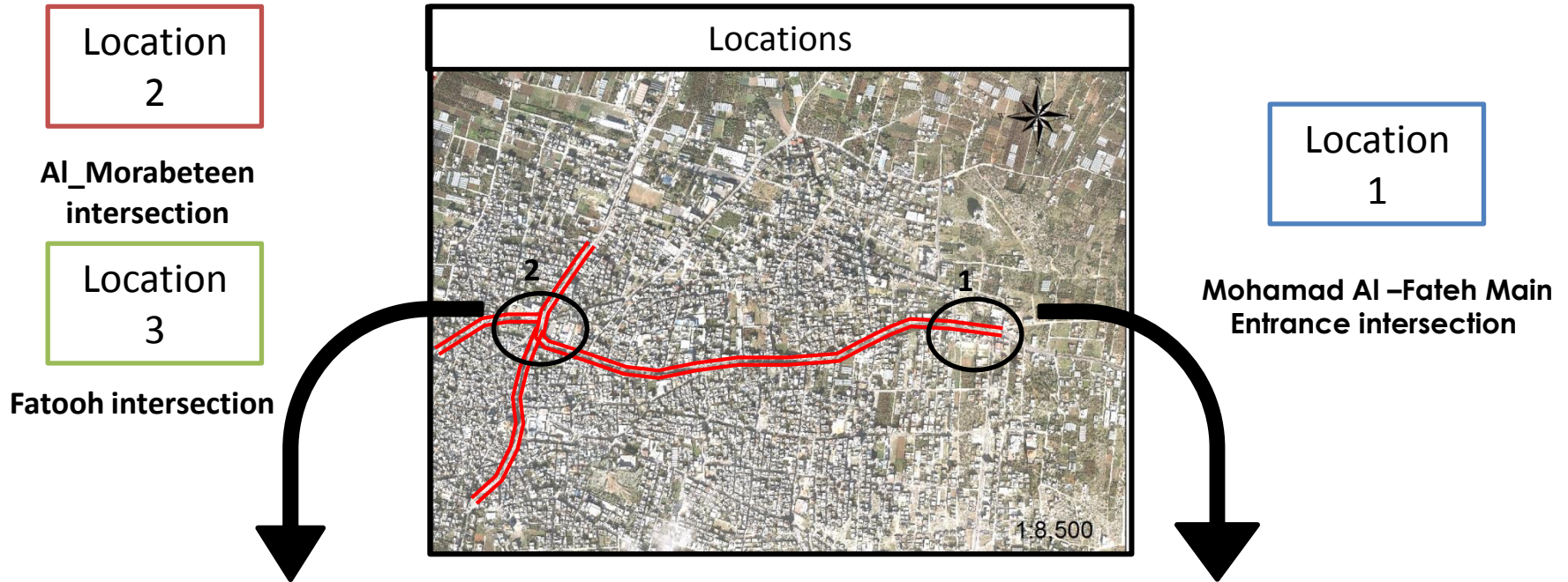
Qalqilia city roads Diagnosis

Streets types roads width **road Surface** roads direction **commercial streets** Road speed
VPH **services** roads used by trucks **Traffic volume counts** transportation movements

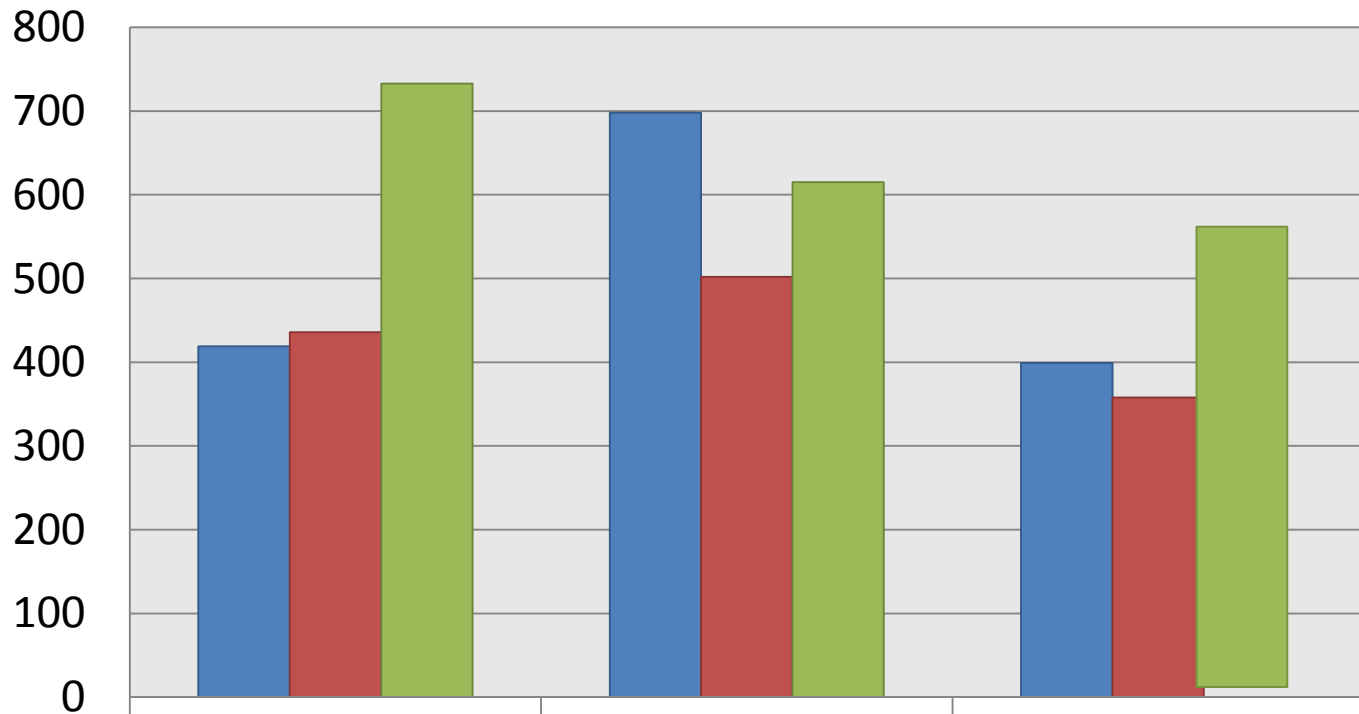
Qalqilia city roads Diagnosis




Traffic volume counts



Traffic volume counts



 Location 1	419	698	399
 Location 2	436	502	358
 Location 3	733	615	585

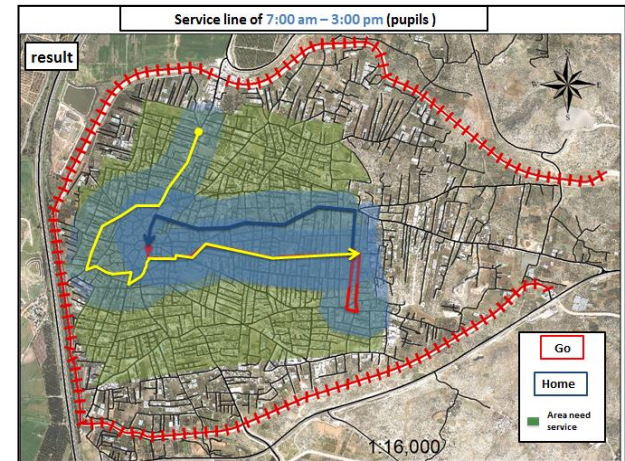
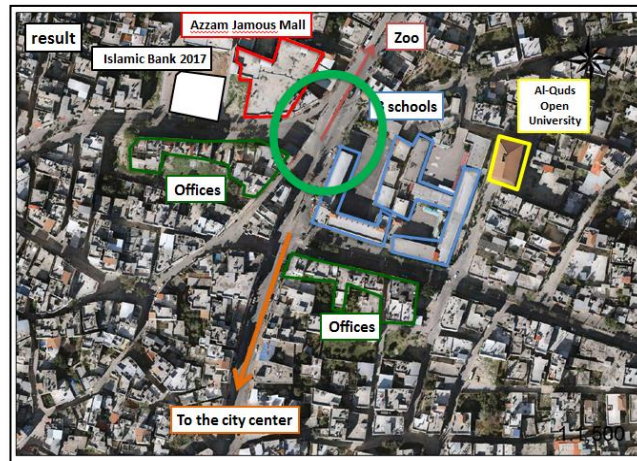
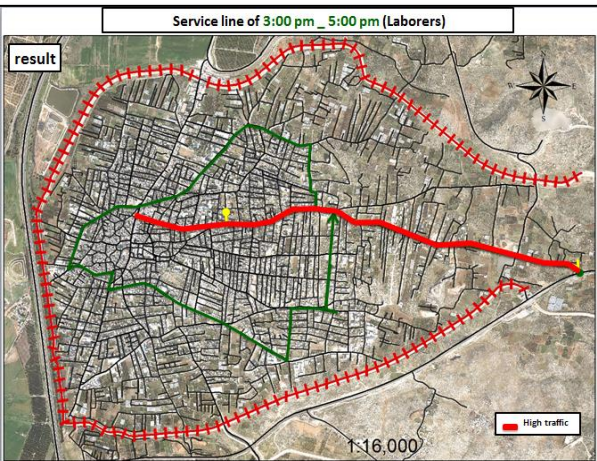
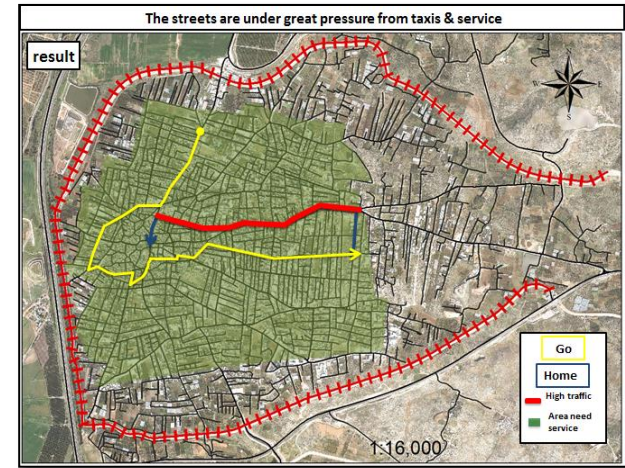
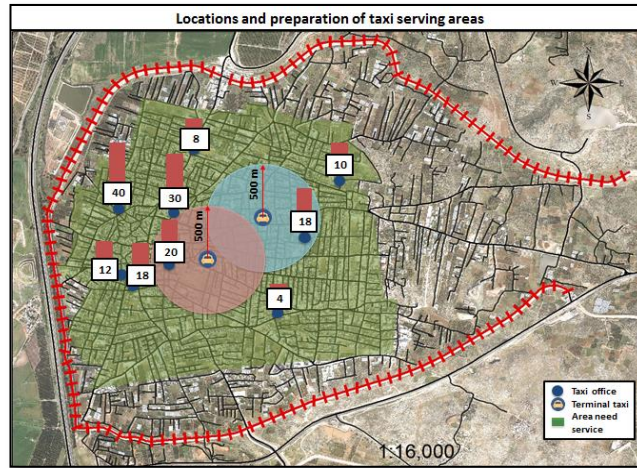
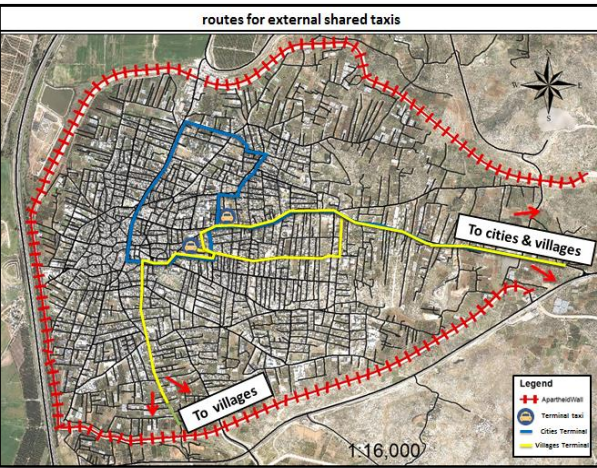
ANALYSIS AND STRATEGIC PLANNING

SWOT Analysis

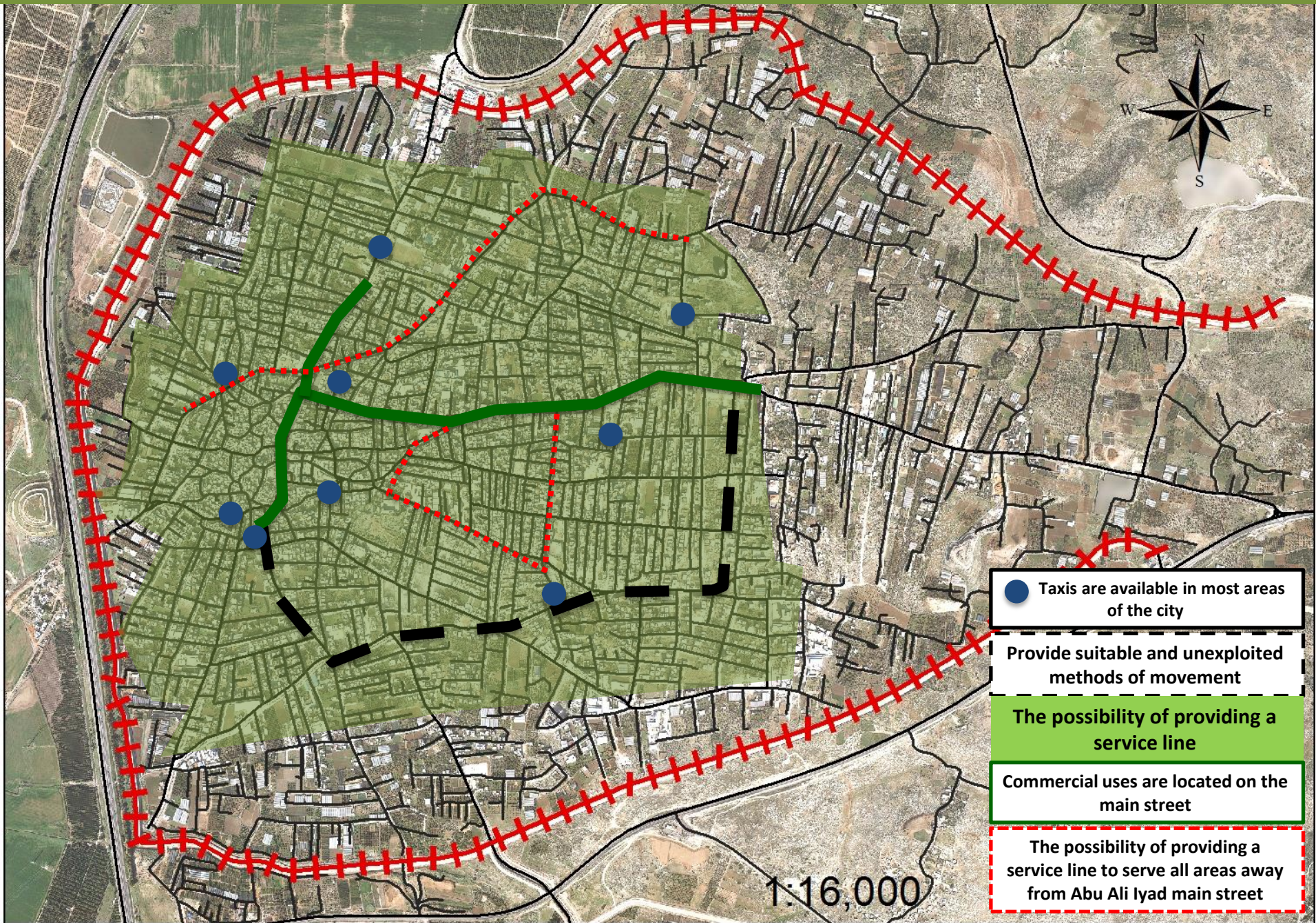
Positive Map

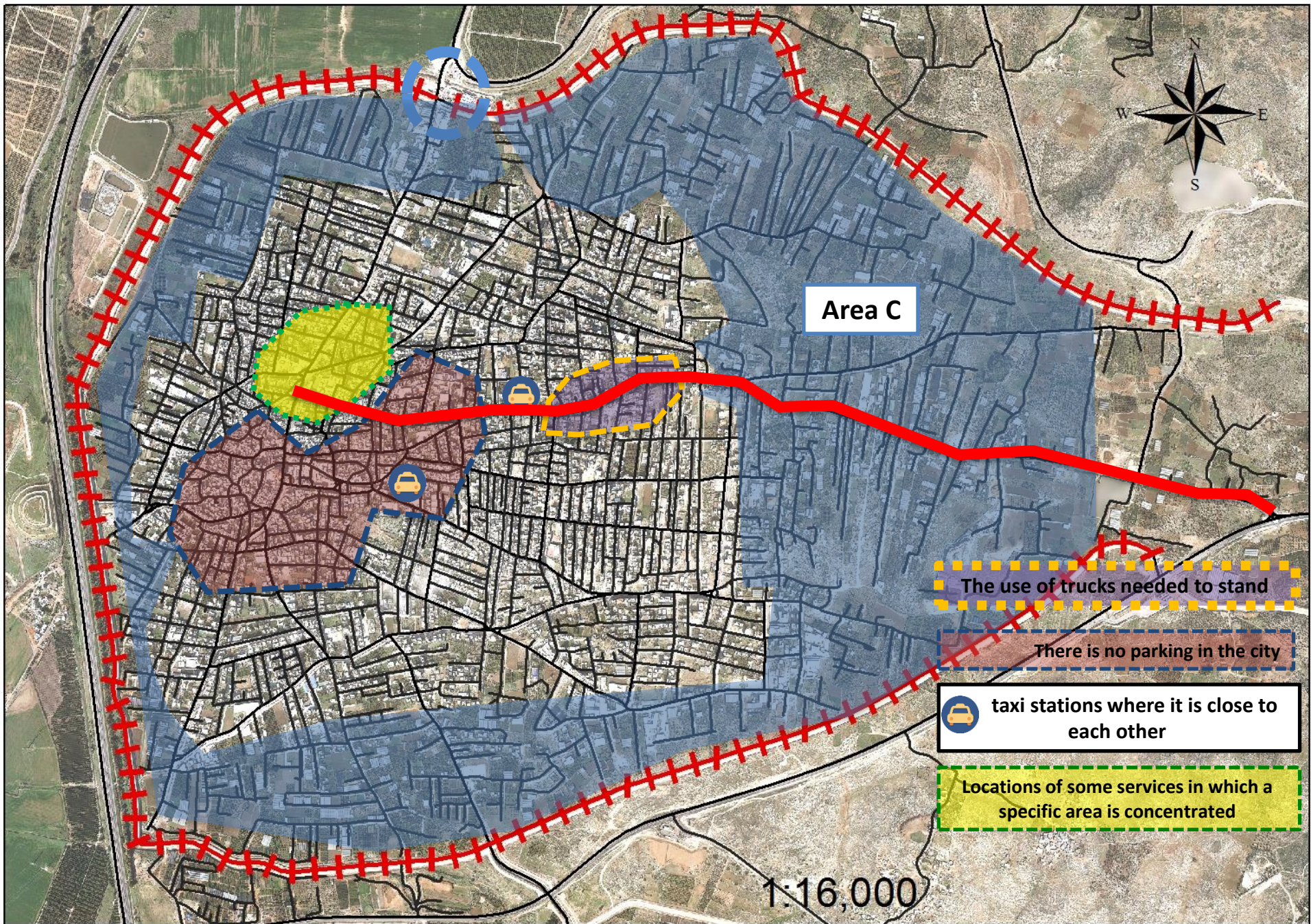
Negative map

ANALYSIS AND STRATEGIC PLANNING



Positive Map






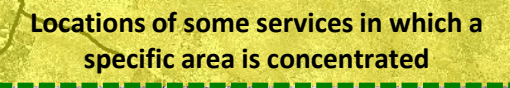
Area C



The use of trucks needed to stand

There is no parking in the city

 taxi stations where it is close to each other

 Locations of some services in which a specific area is concentrated

1:16,000

Main Goals

Economic Benefits	Social Benefits	Environmental Benefits
Savings in transportation costs	Improved transportation options and choices	Green space
Increasing the demand for public services	Community cohesion	Reduced air pollution
Transfer more efficient	Increased physical activity and health	Reduced resource consumption
	Congestion reduction	Reduced water pollution
		Reduced “heat Island” effect

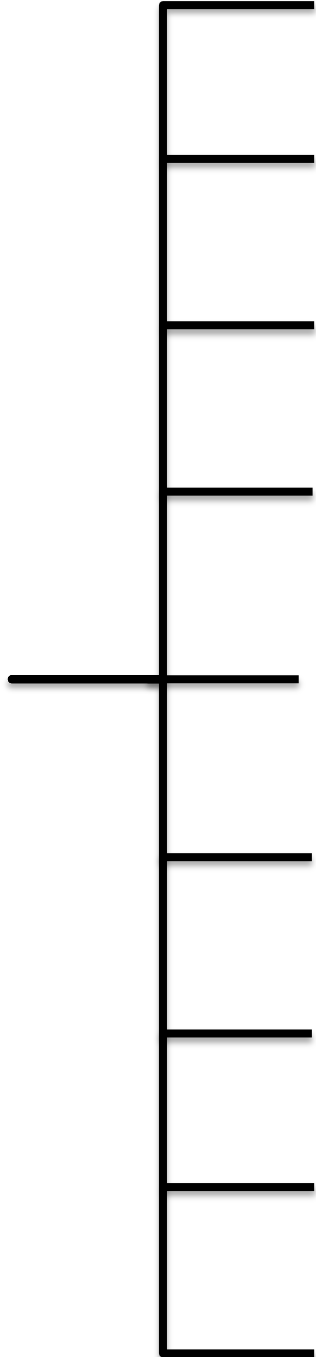
Strengths



Issues



Weaknesses



Need to reduce traffic in residential areas

Provide service lines to serve the city

Low accessibility levels

Reviving traffic on several streets

Air and noise pollution on main roads

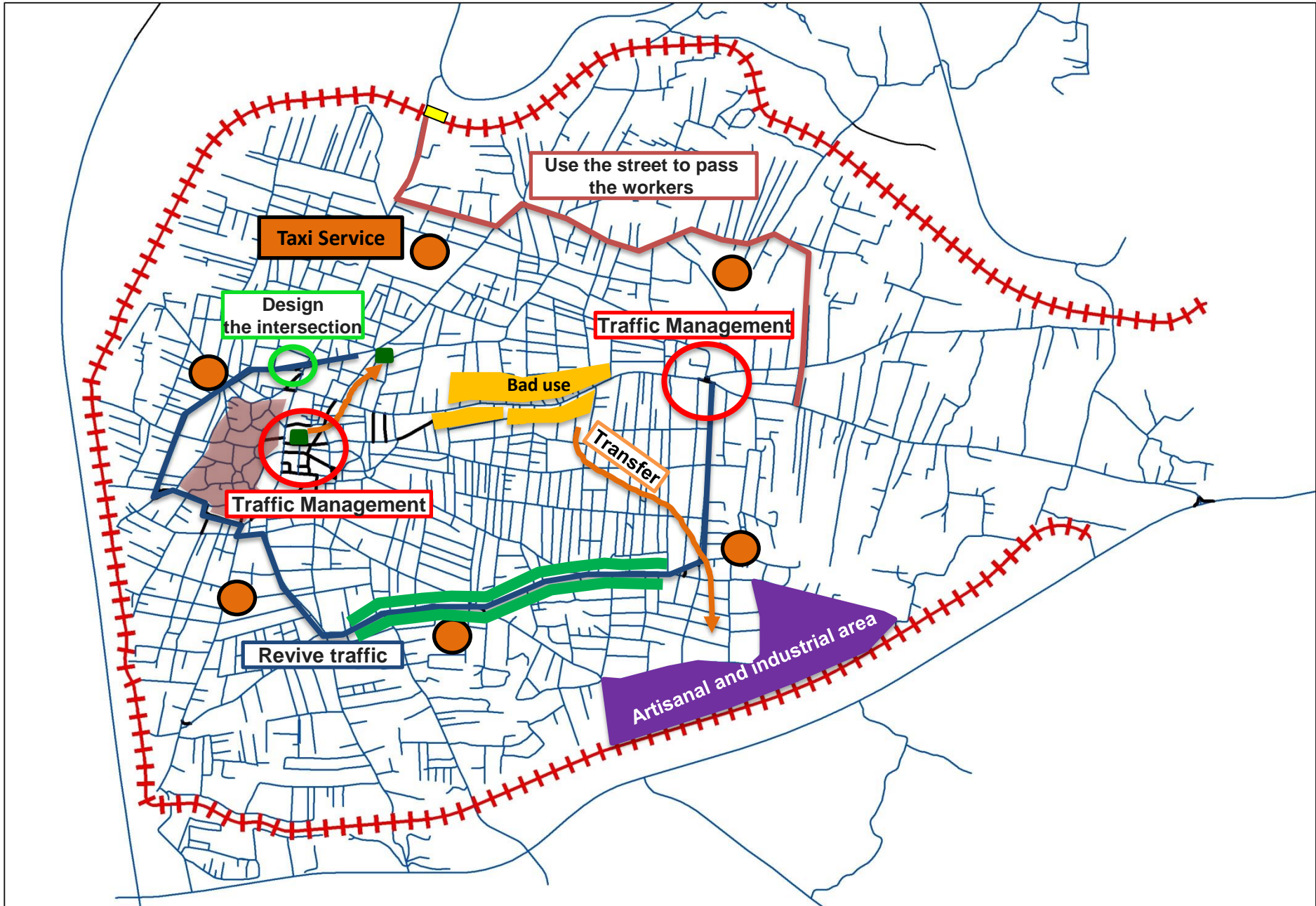
Streets landscaping needs

High traffic congestion on main connecting roads

Safety requirements

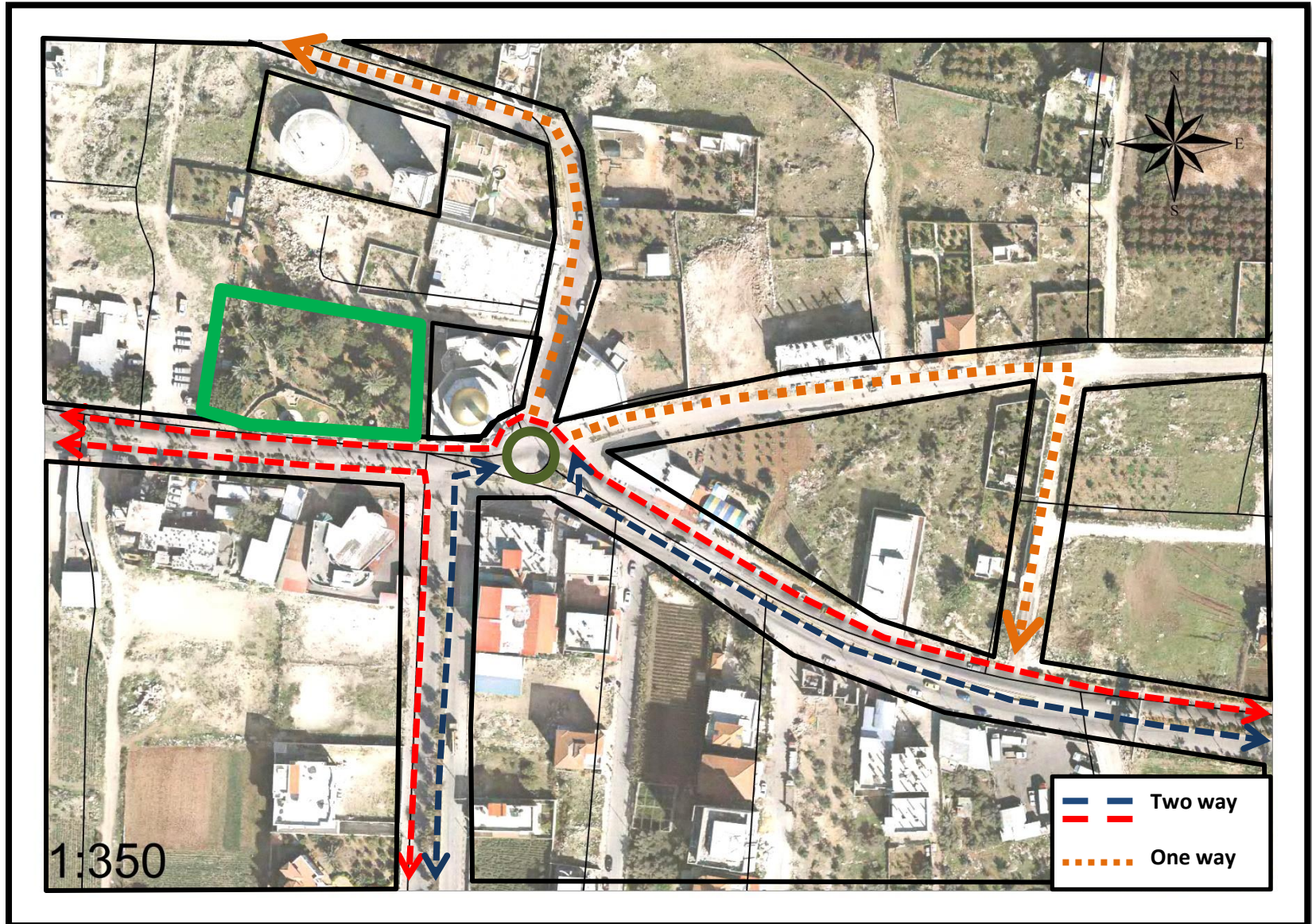
Prevent horizontal height in the center area

PLAN PREPARATION AND DETAILED PLANNING

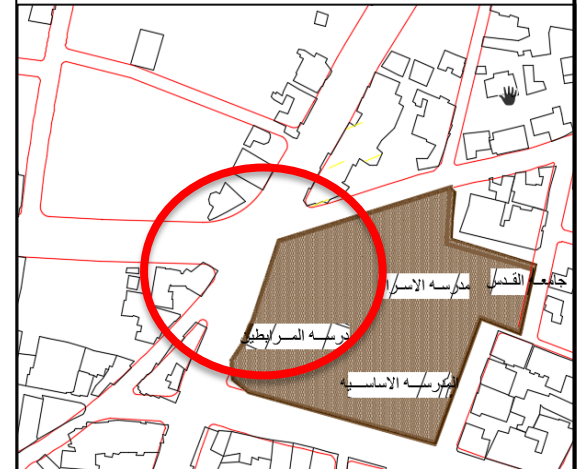
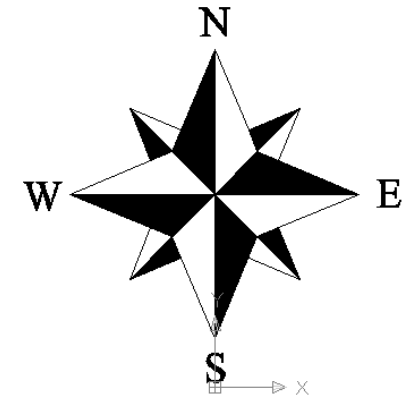
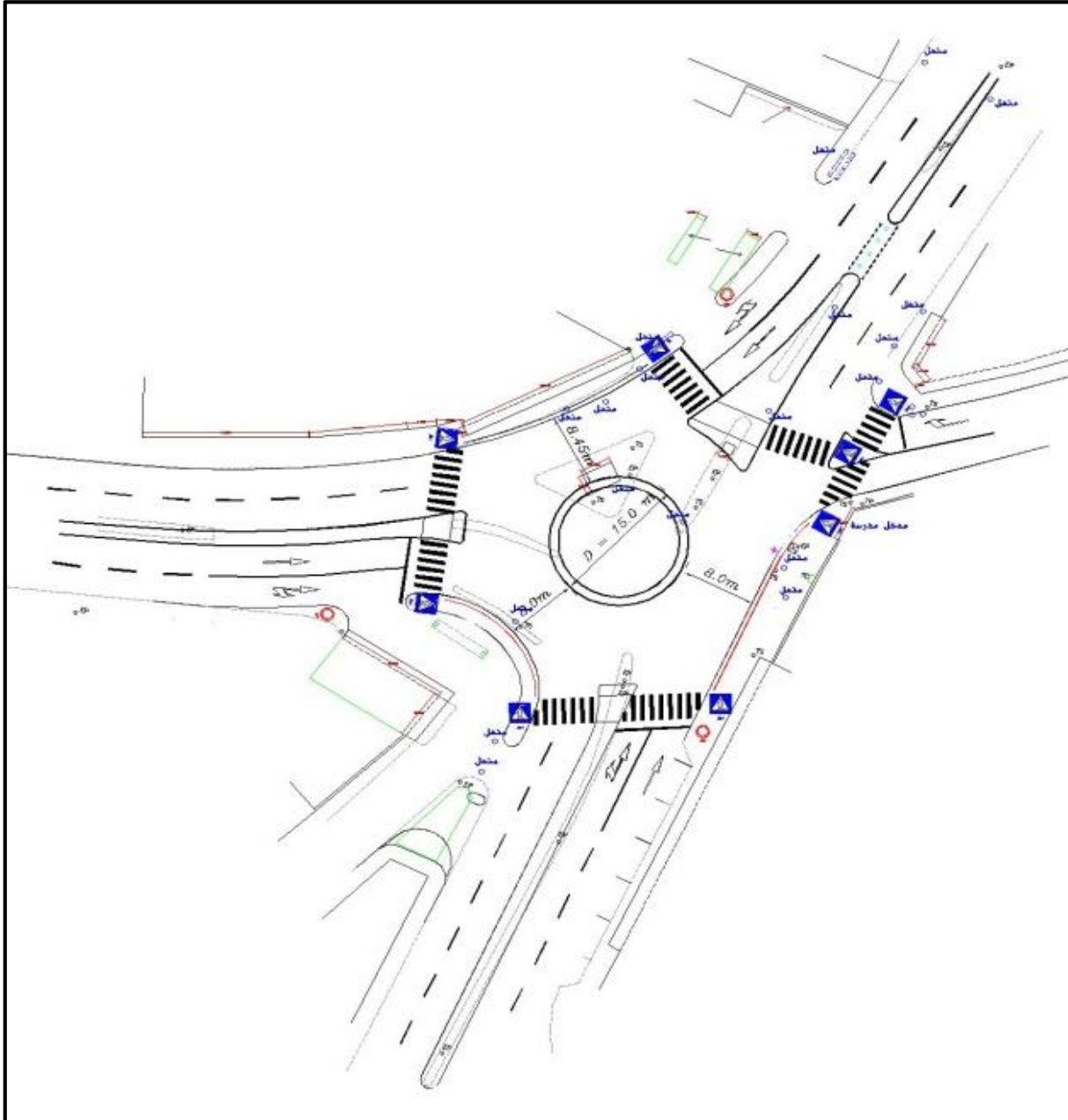


Traffic Management

Mohammed Al Fateh Roundabout



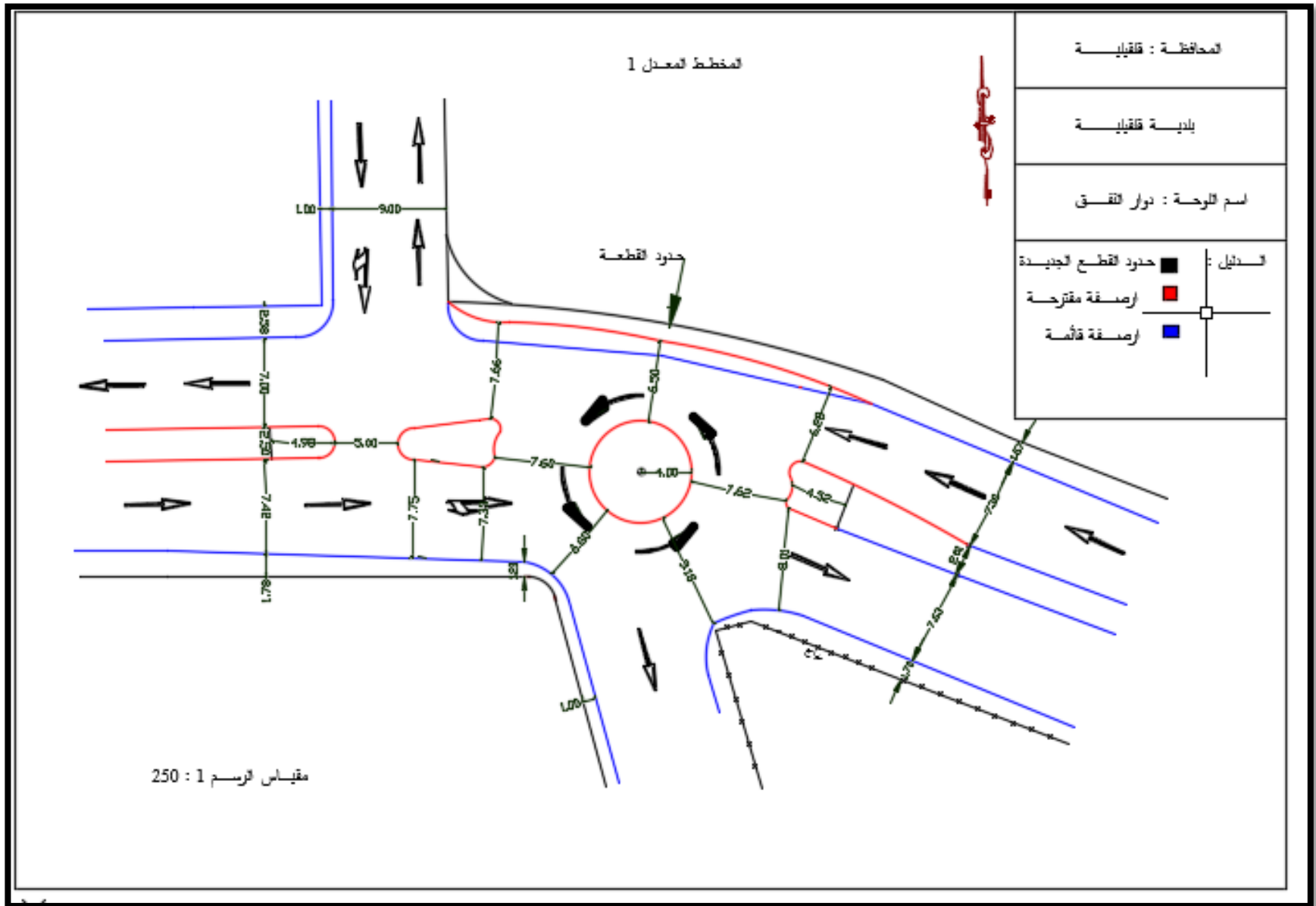
Design the intersection



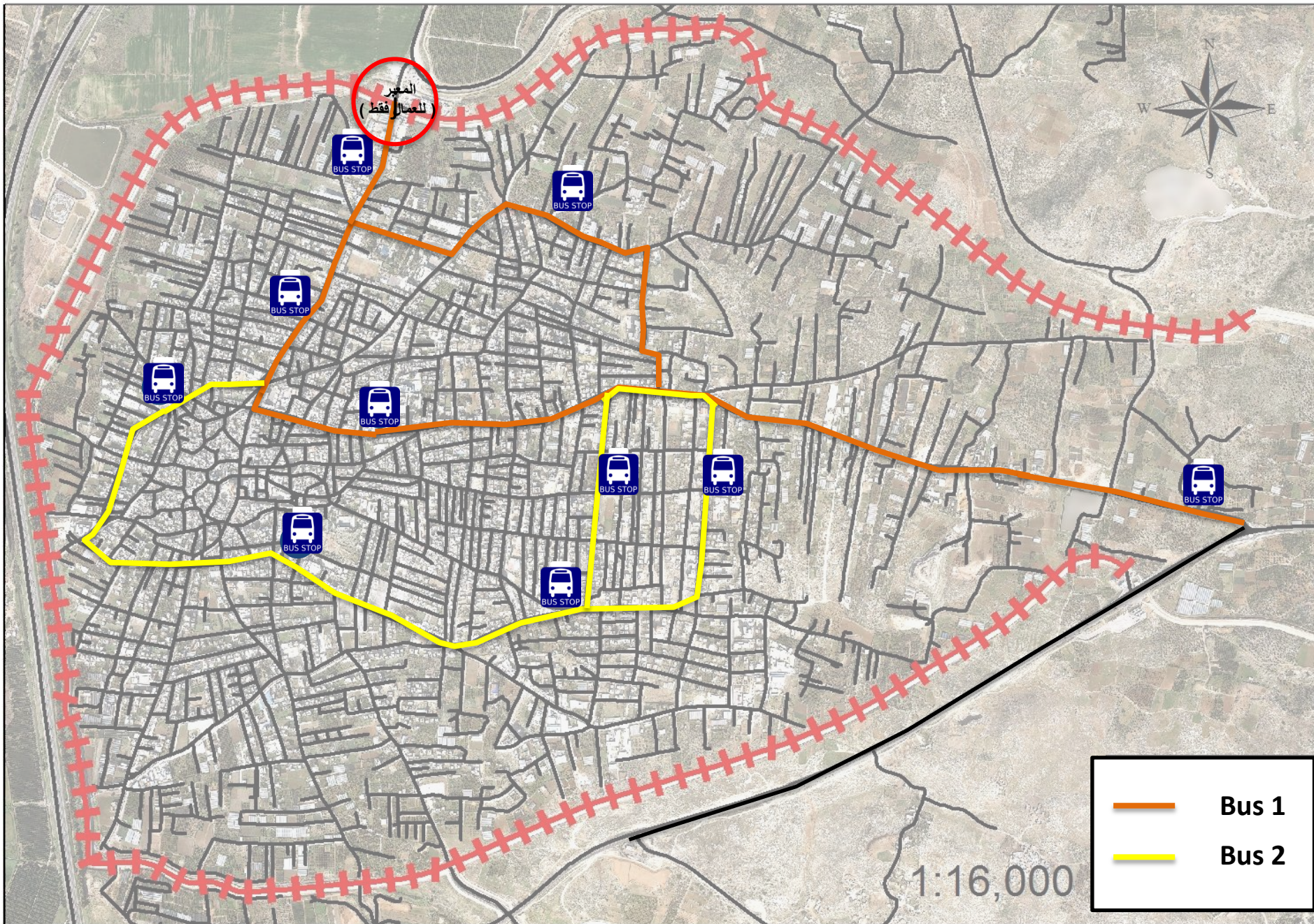
**Intersection of martyr
Abu Ali Eyad**

scale 1:400

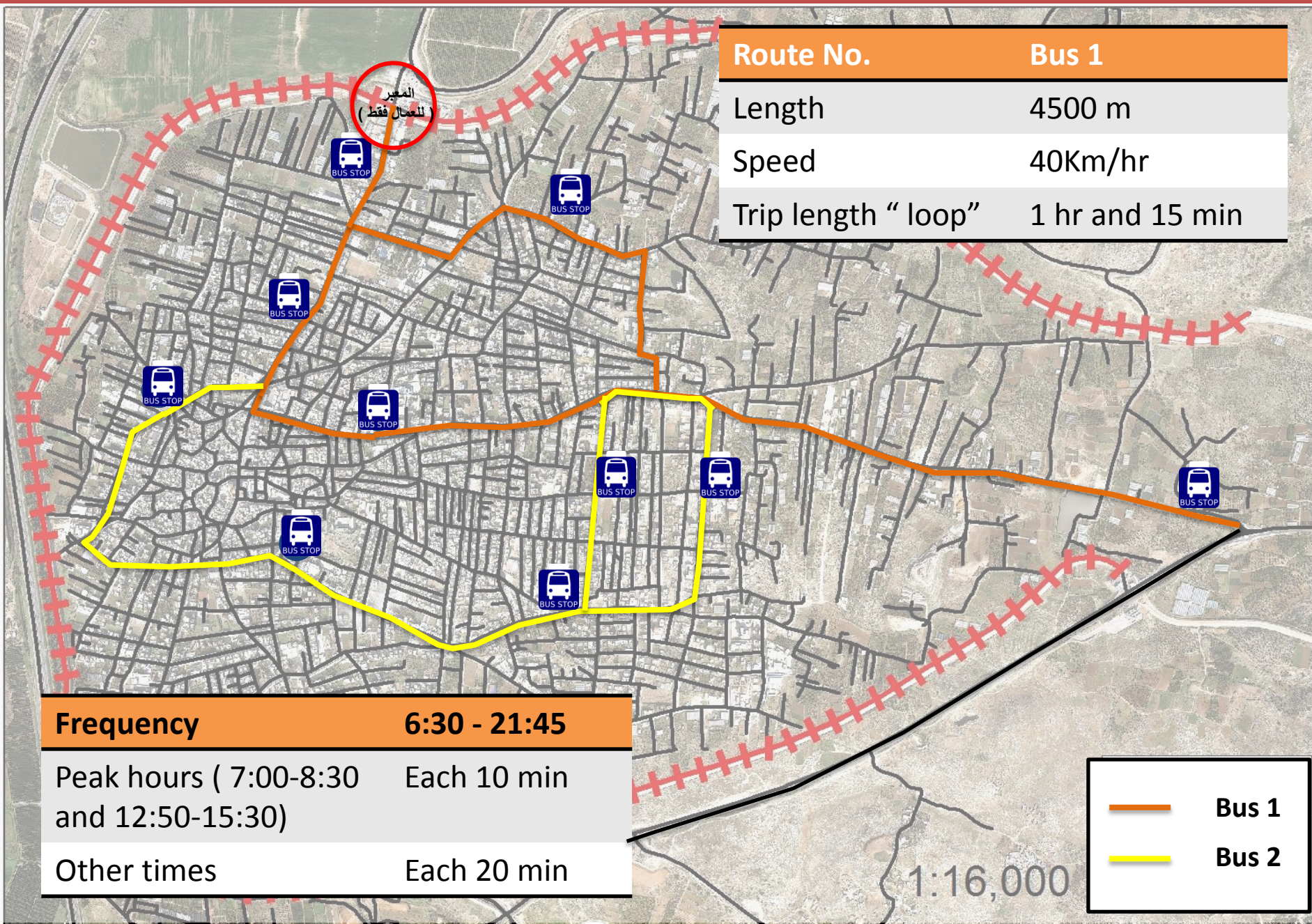
Design the intersection



Traffic movement on Bus route





Traffic movement on Bus route

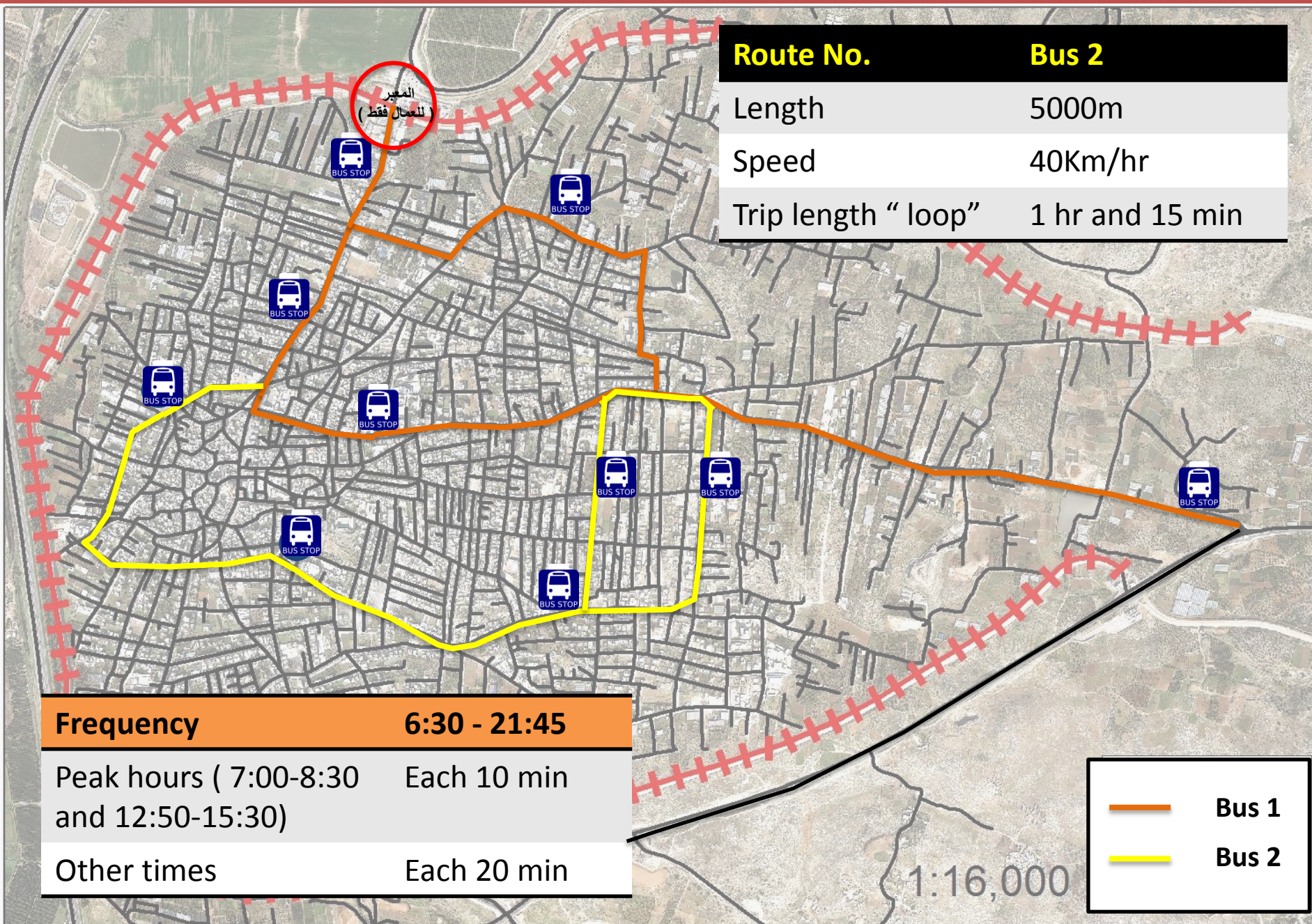


Route No.	Bus 1
Length	4500 m
Speed	40Km/hr
Trip length "loop"	1 hr and 15 min

Frequency	6:30 - 21:45
Peak hours (7:00-8:30 and 12:50-15:30)	Each 10 min
Other times	Each 20 min



	Bus 1
	Bus 2

Traffic movement on Bus route



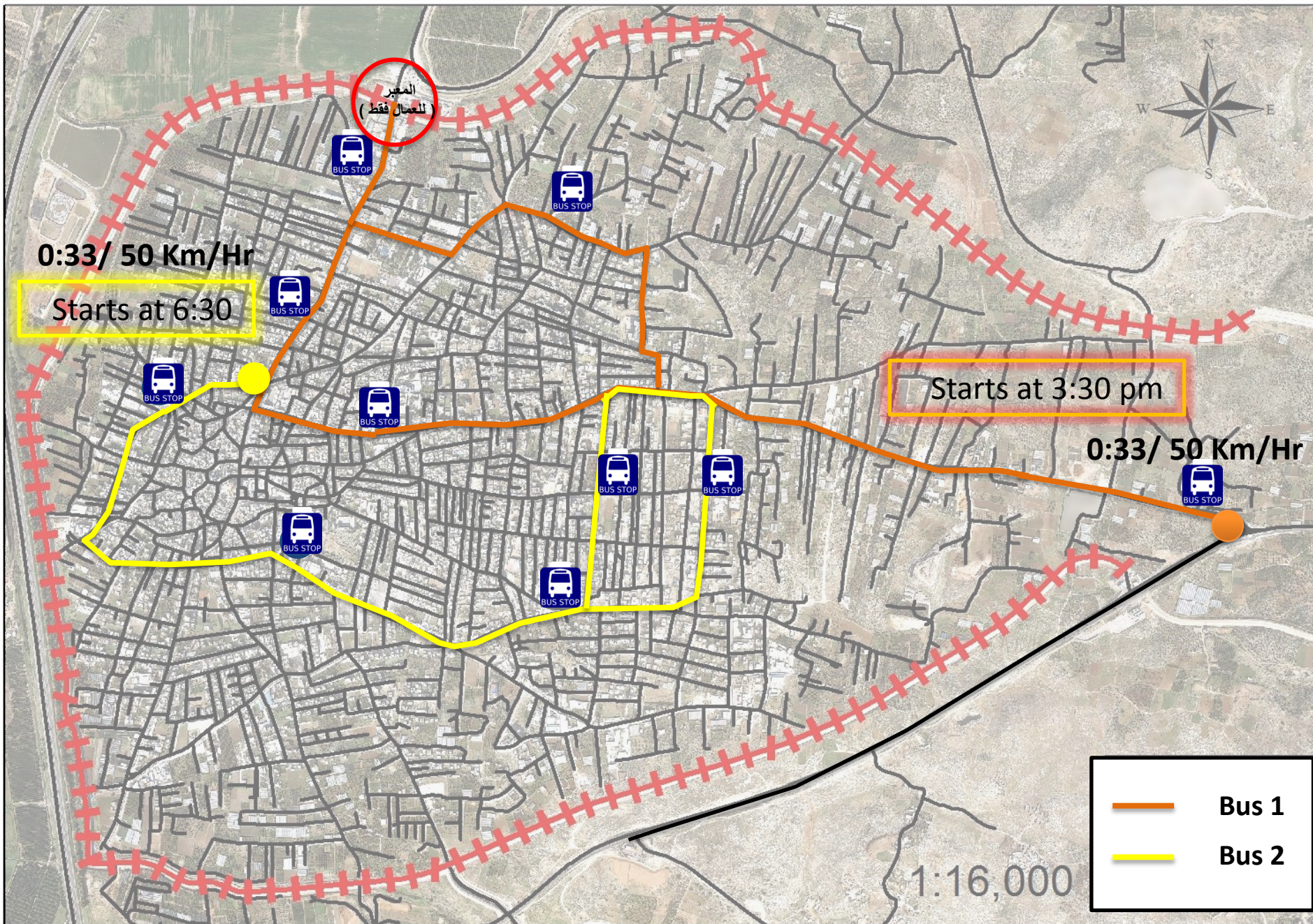
Route No.	Bus 2
Length	5000m
Speed	40Km/hr
Trip length "loop"	1 hr and 15 min

Frequency	6:30 - 21:45
Peak hours (7:00-8:30 and 12:50-15:30)	Each 10 min
Other times	Each 20 min

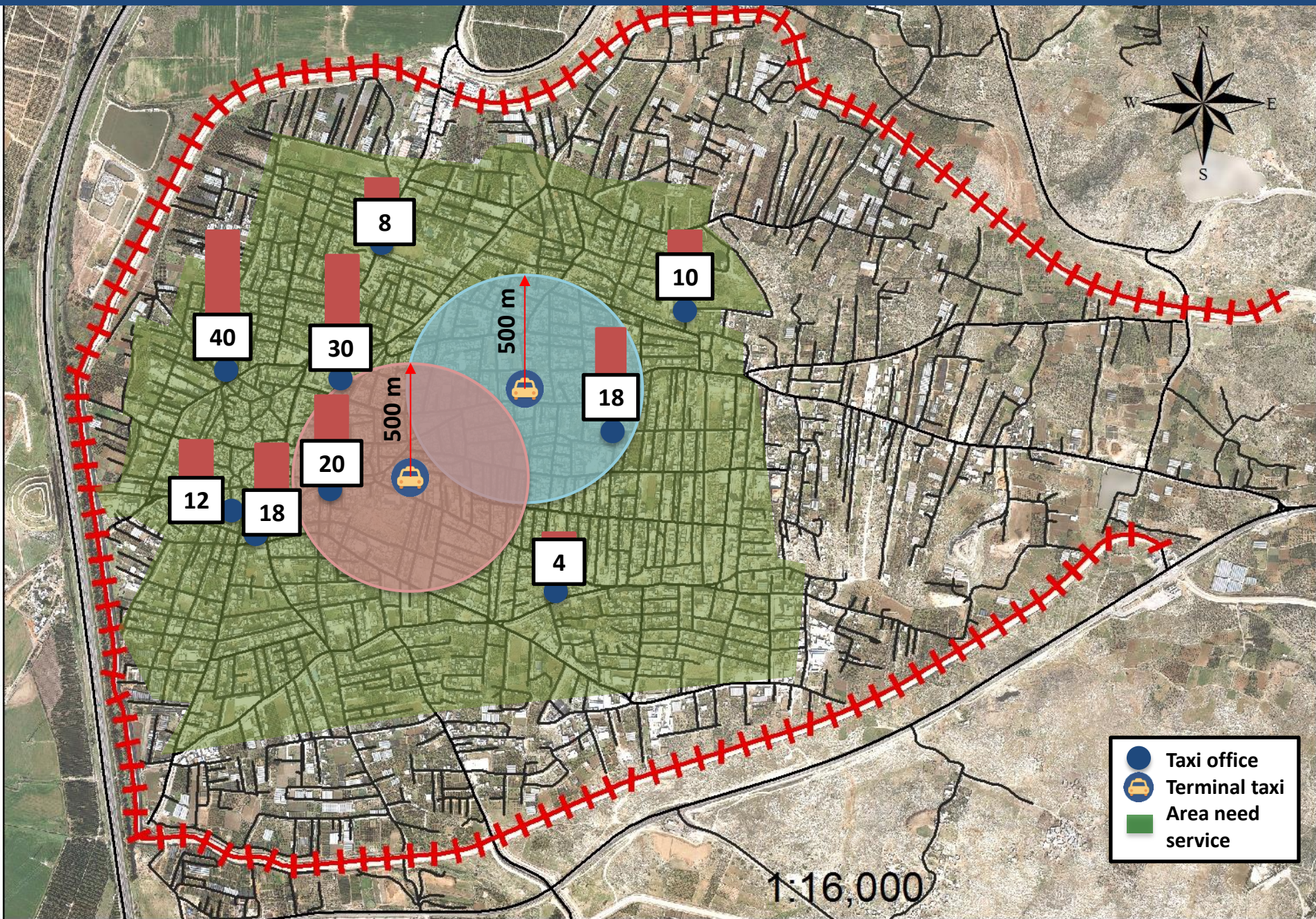
	Bus 1
	Bus 2

1:16,000

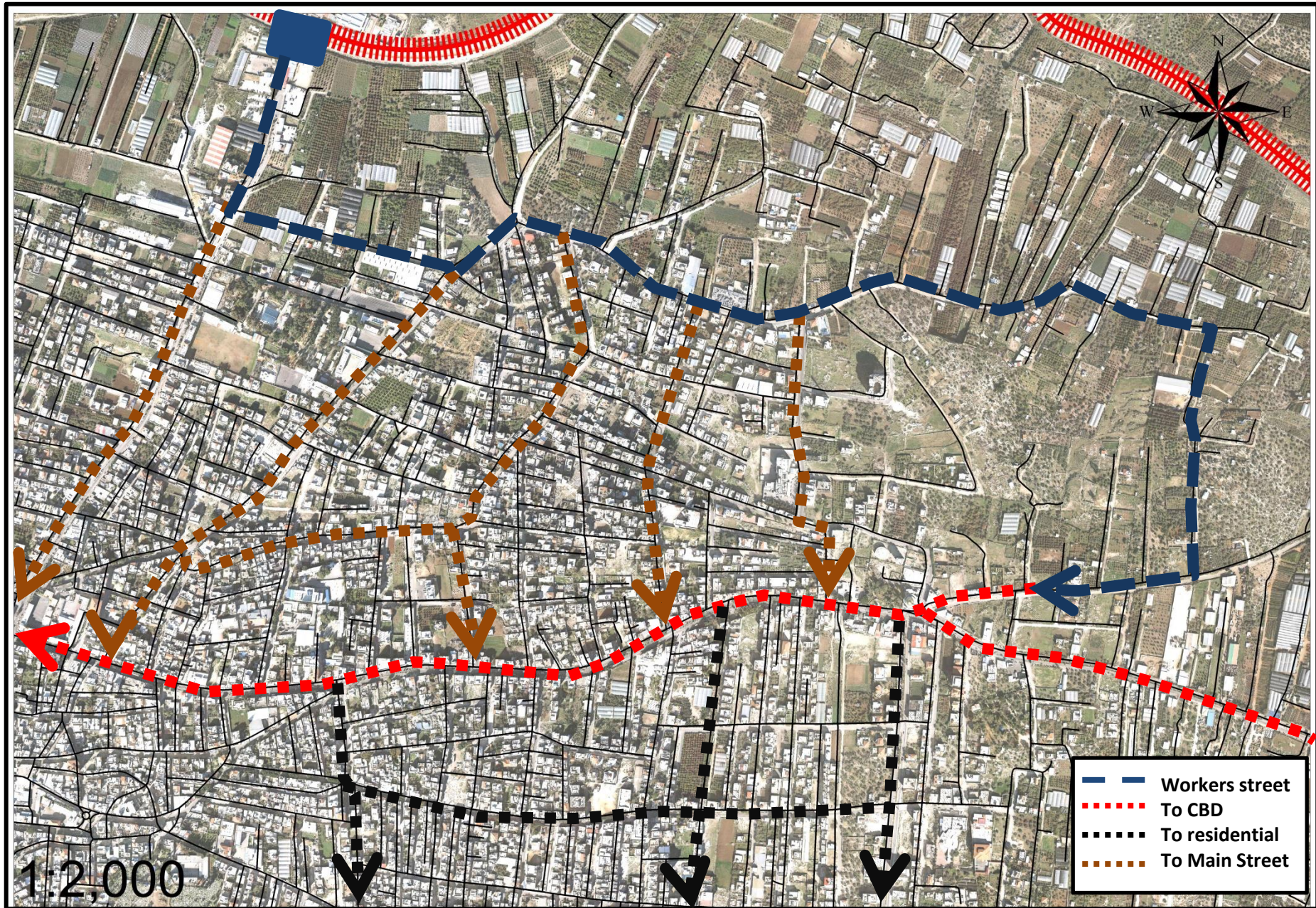
Traffic movement on Bus route



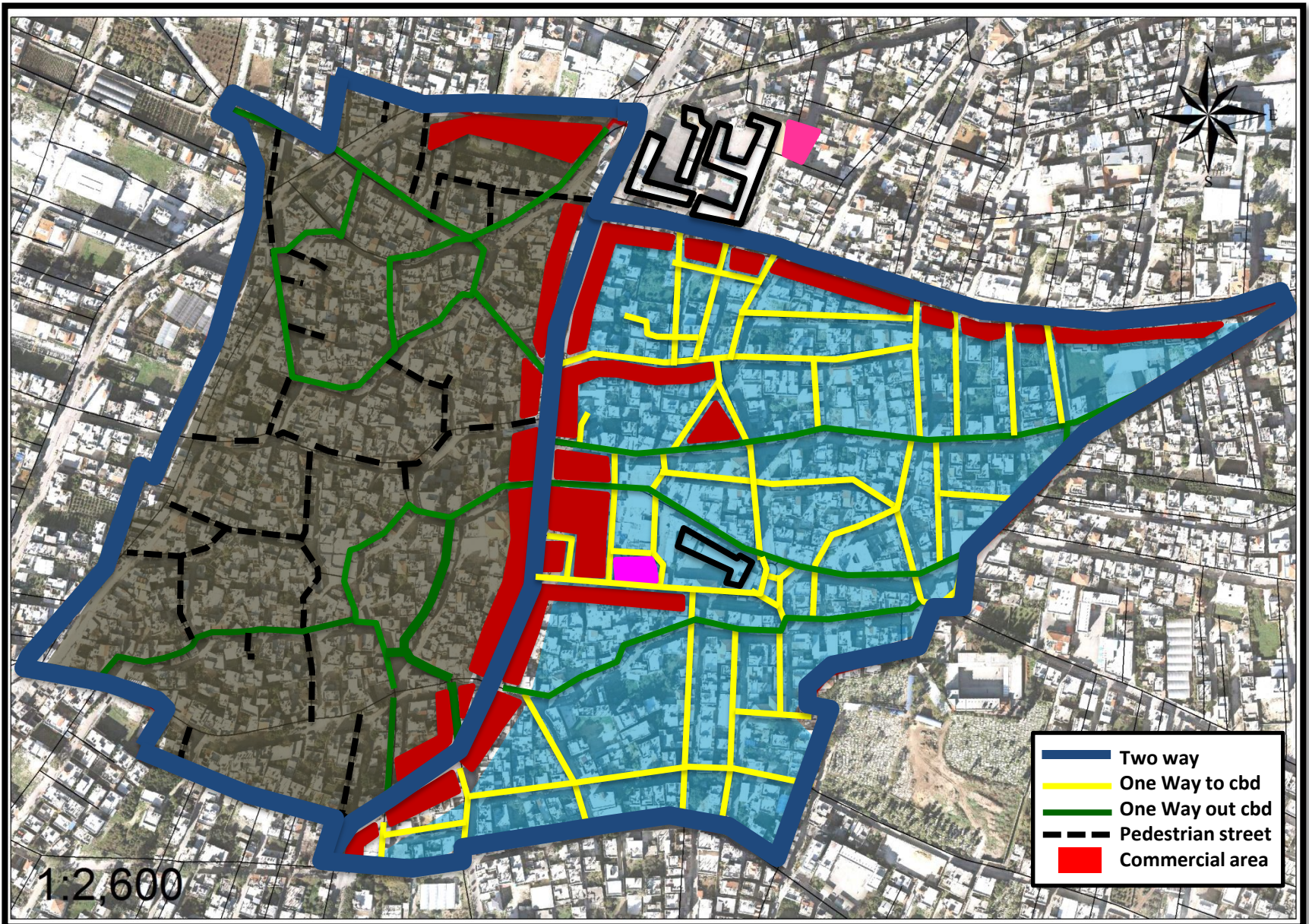
Locations and preparation of taxi serving areas



Use the street to pass the workers

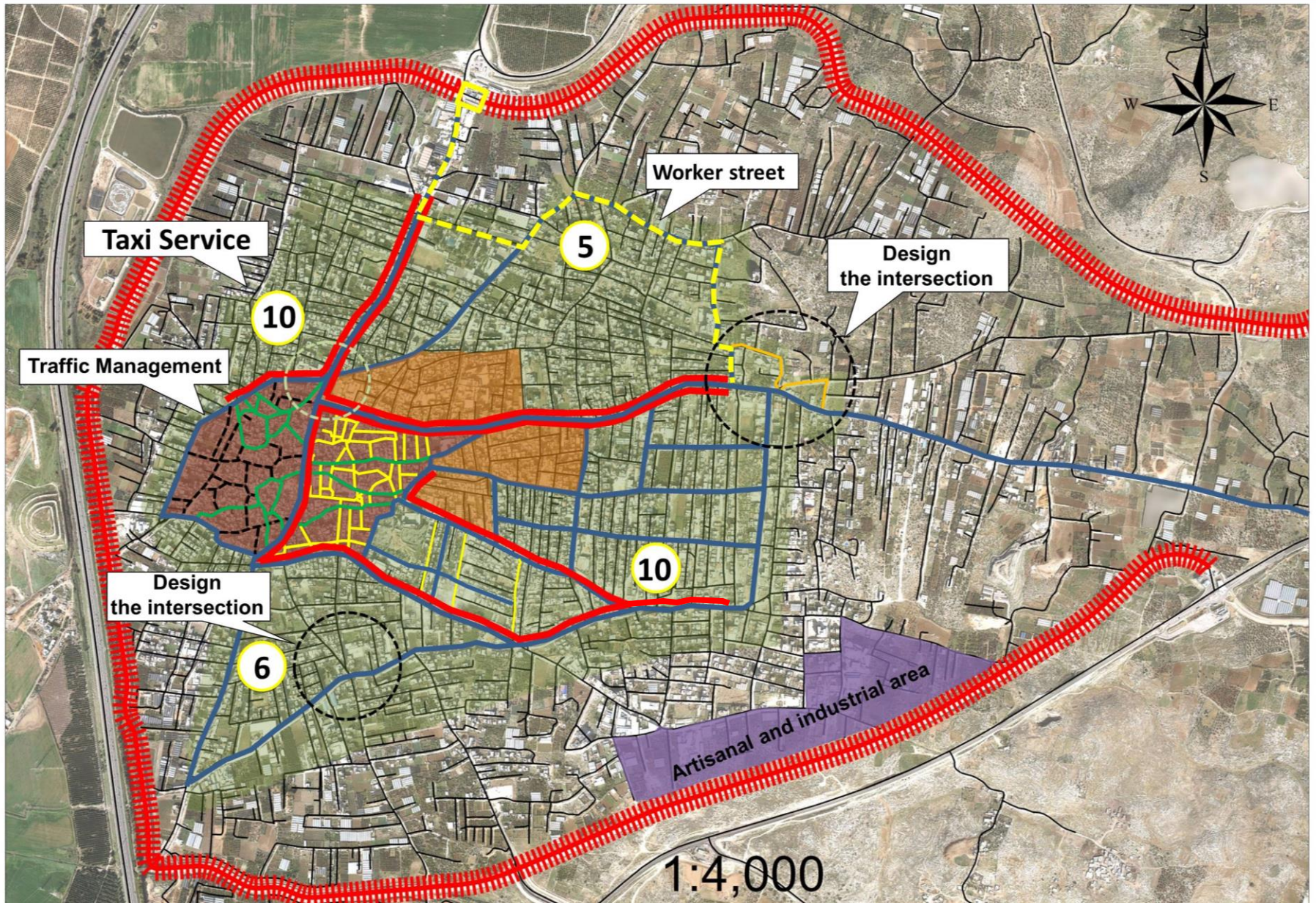


CBD Routes



Conclusion

Traffic Plan for Qalqiliya City



Thank You