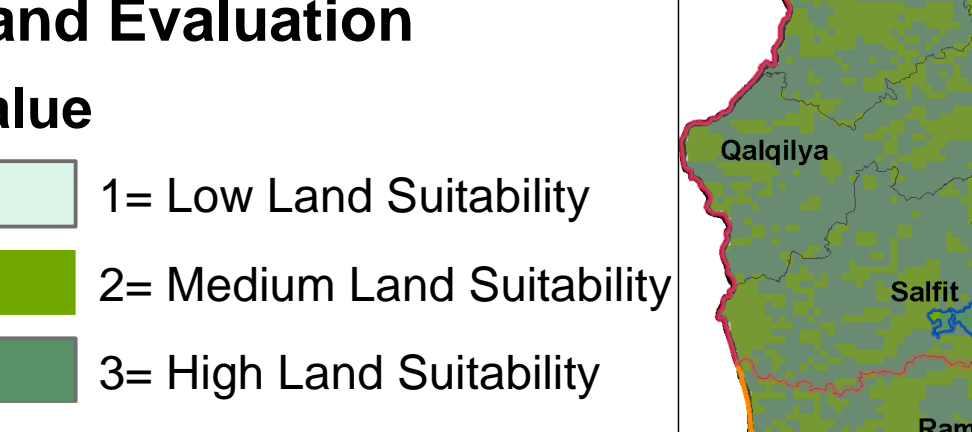
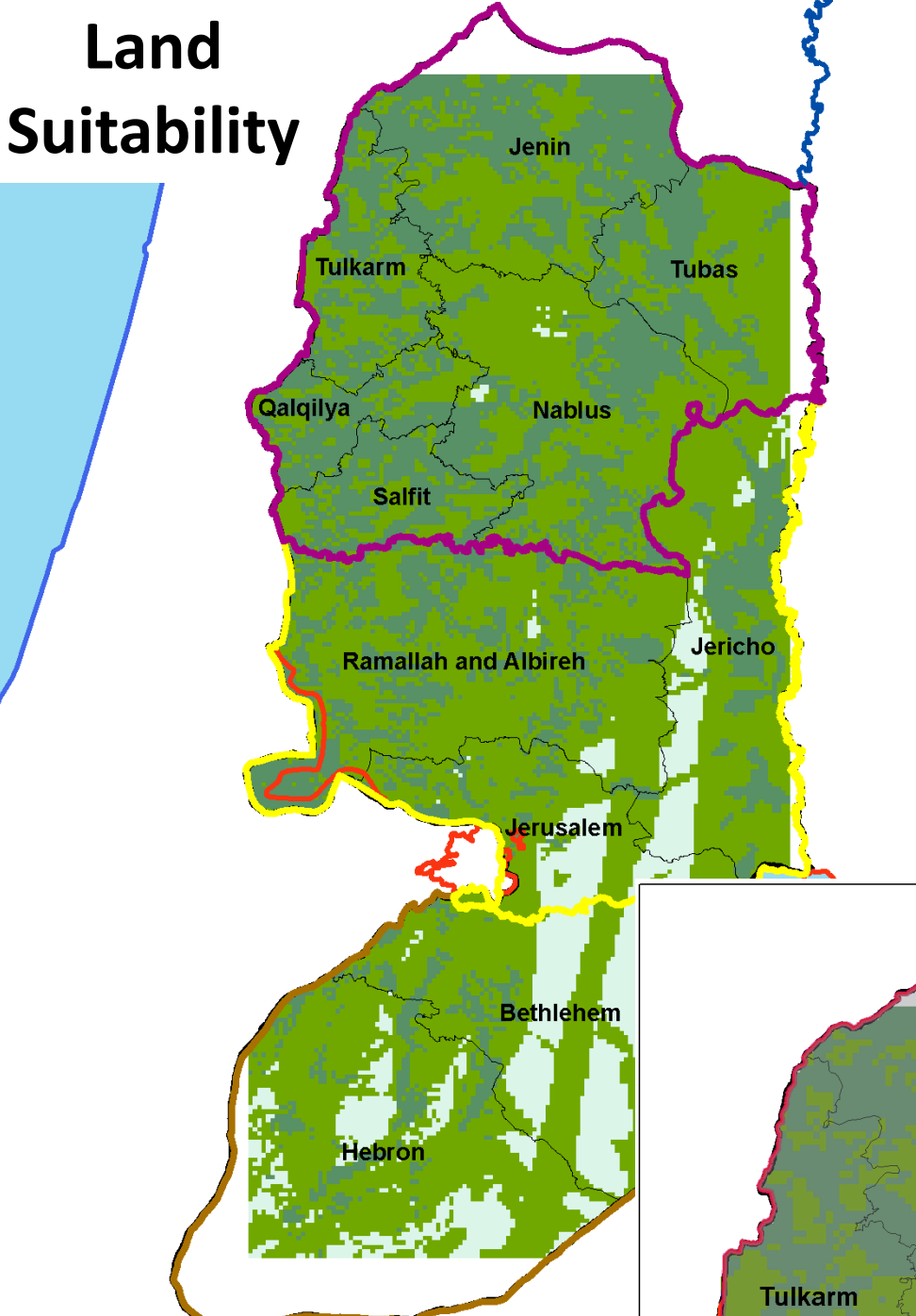
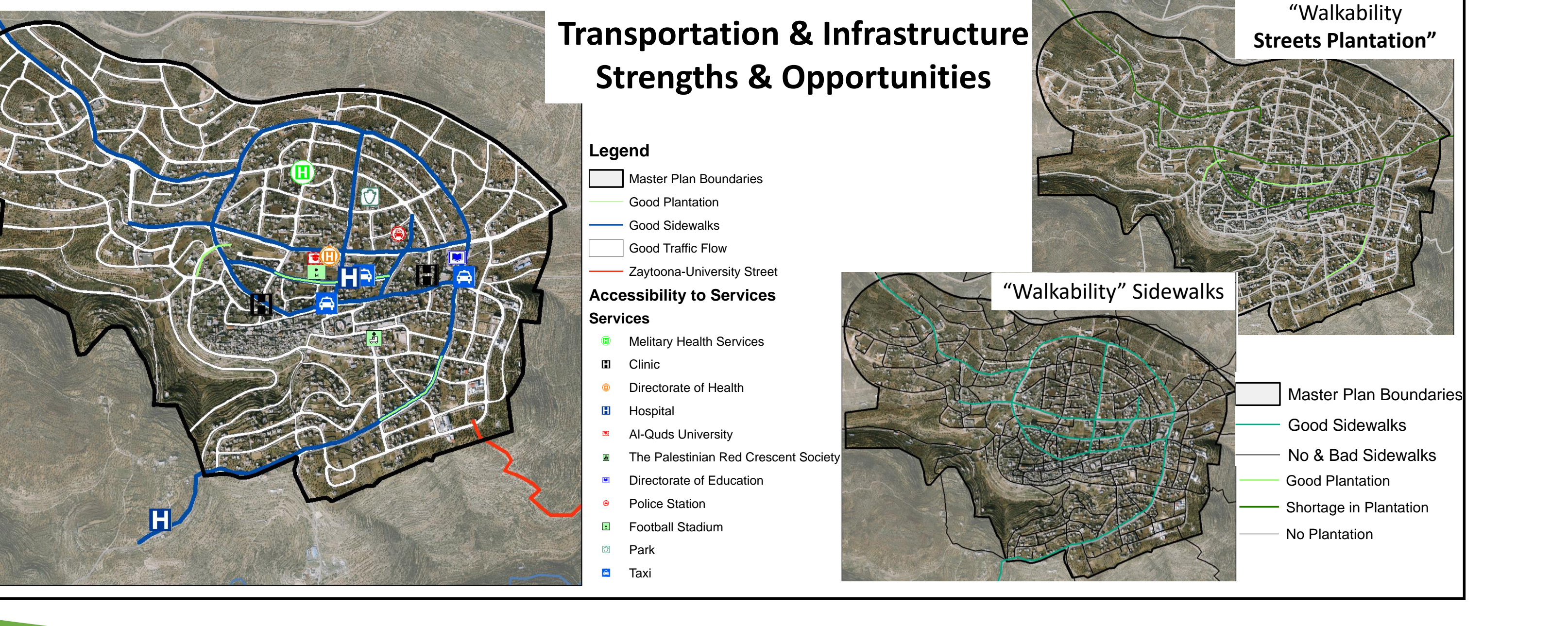
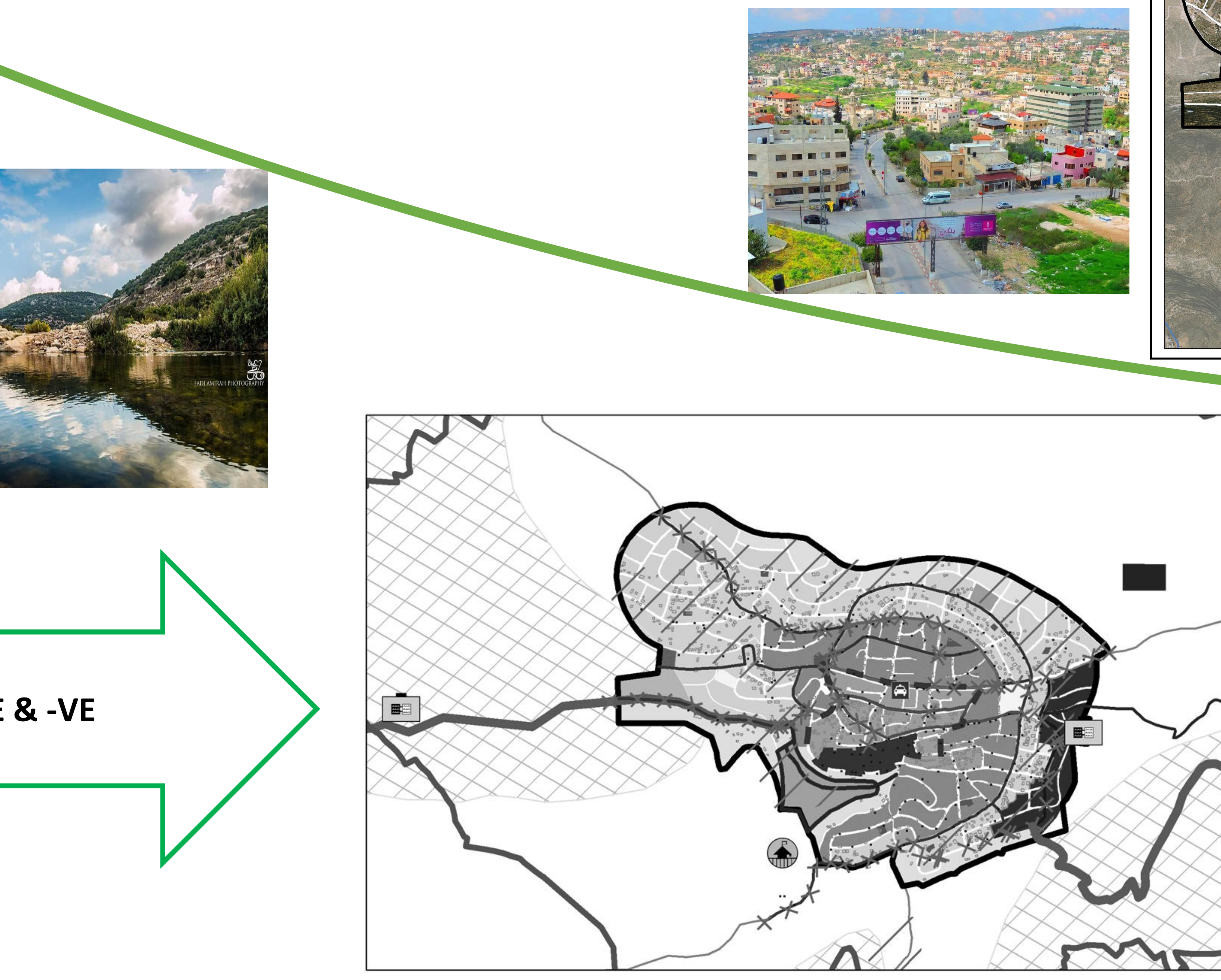
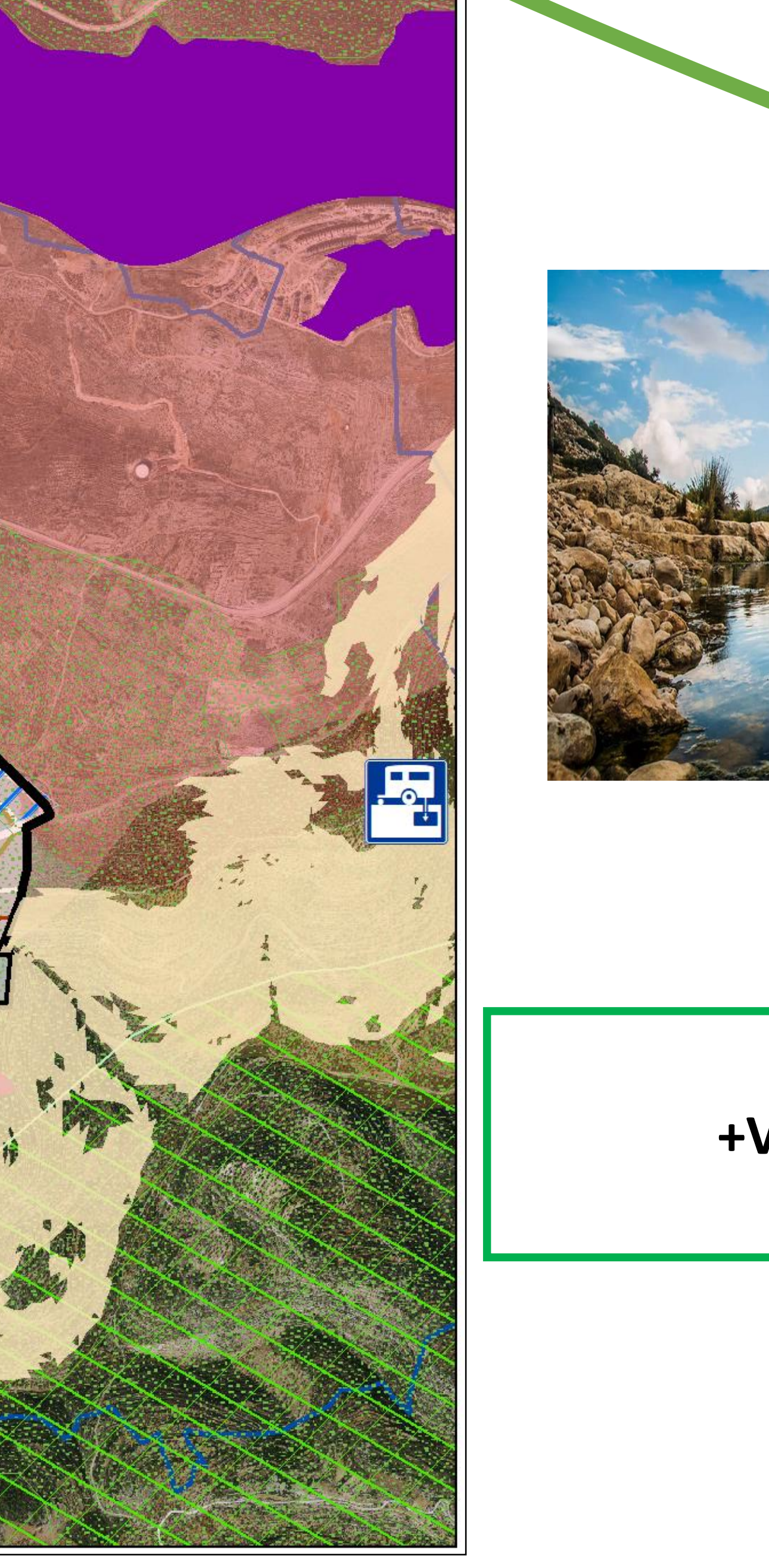
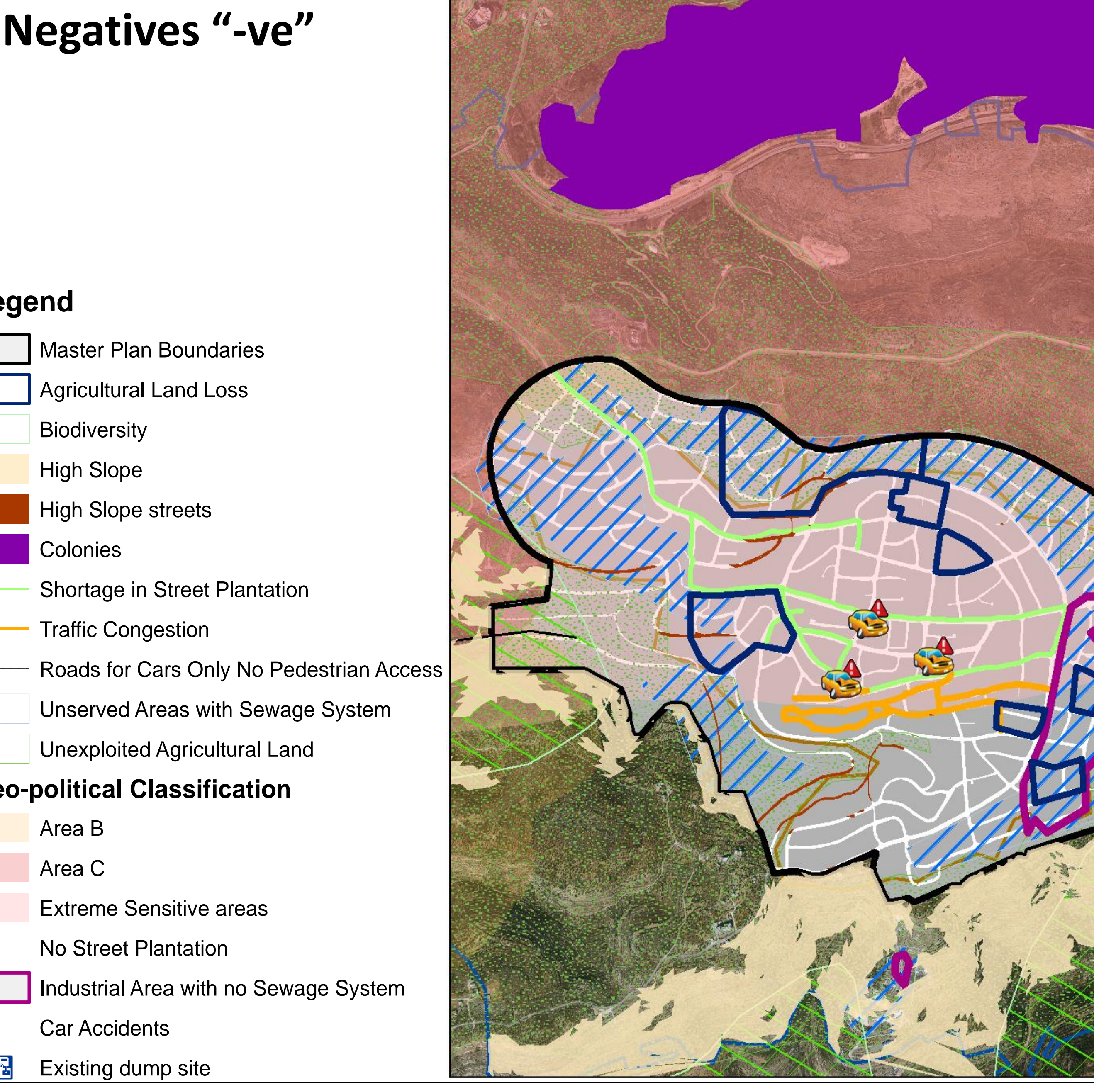
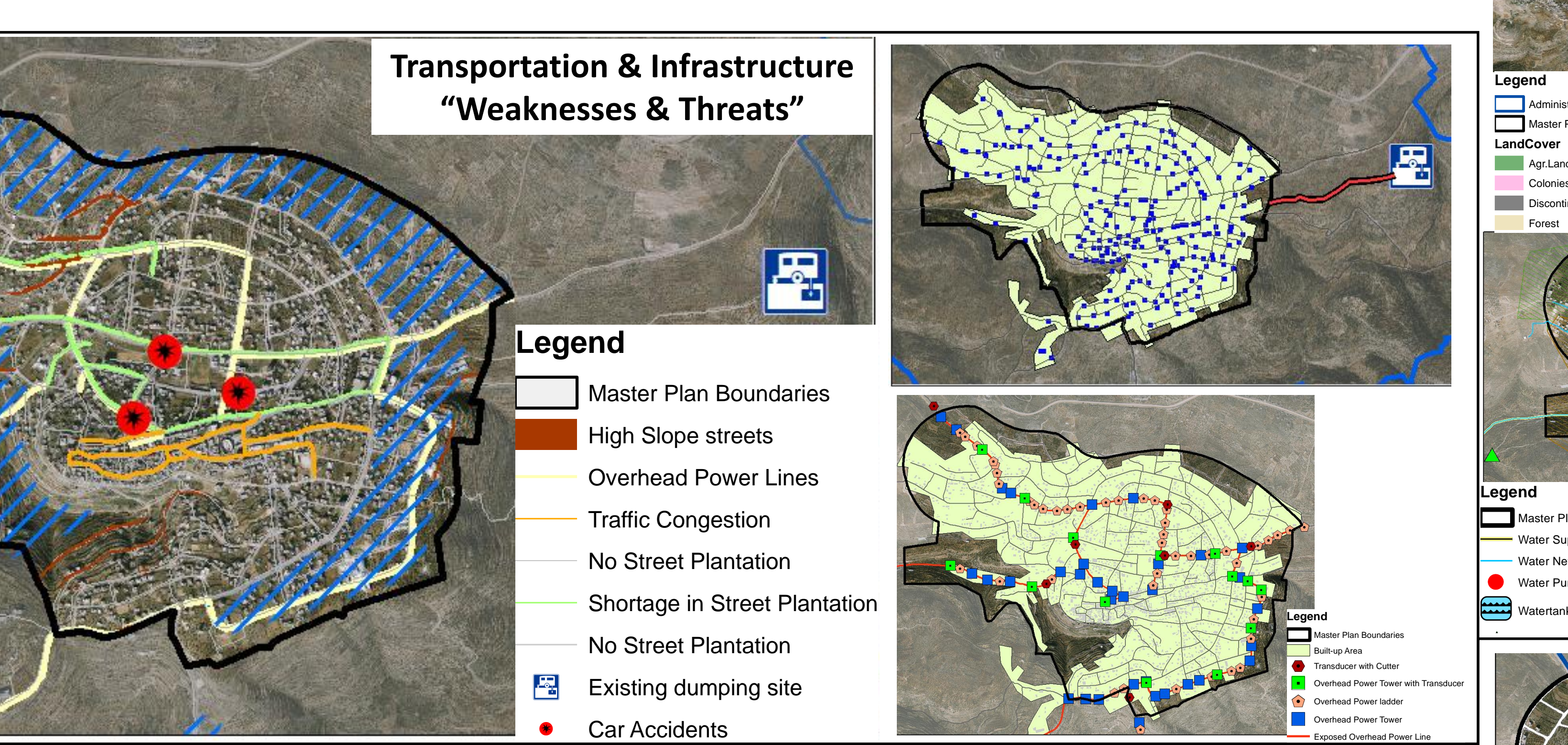
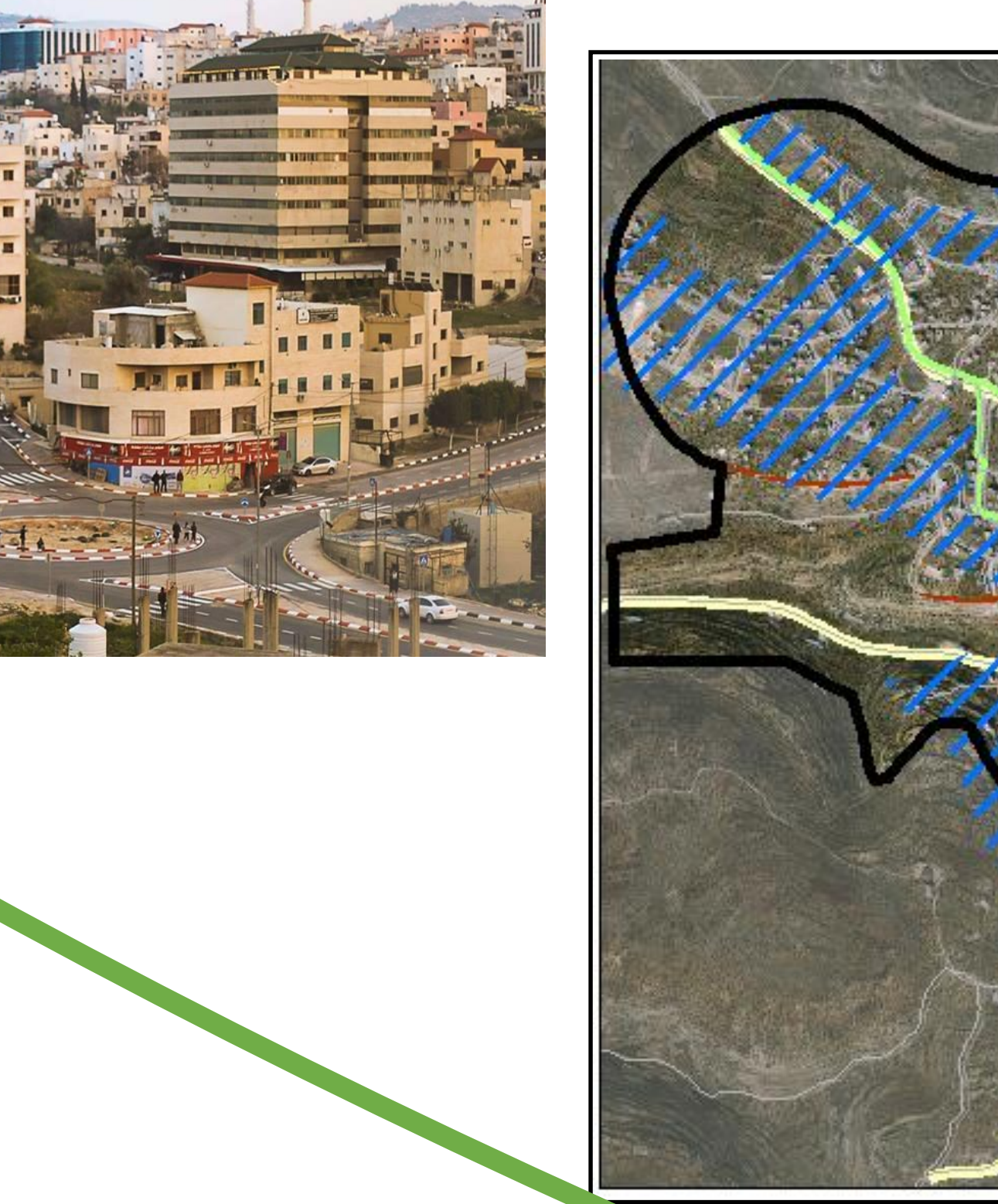
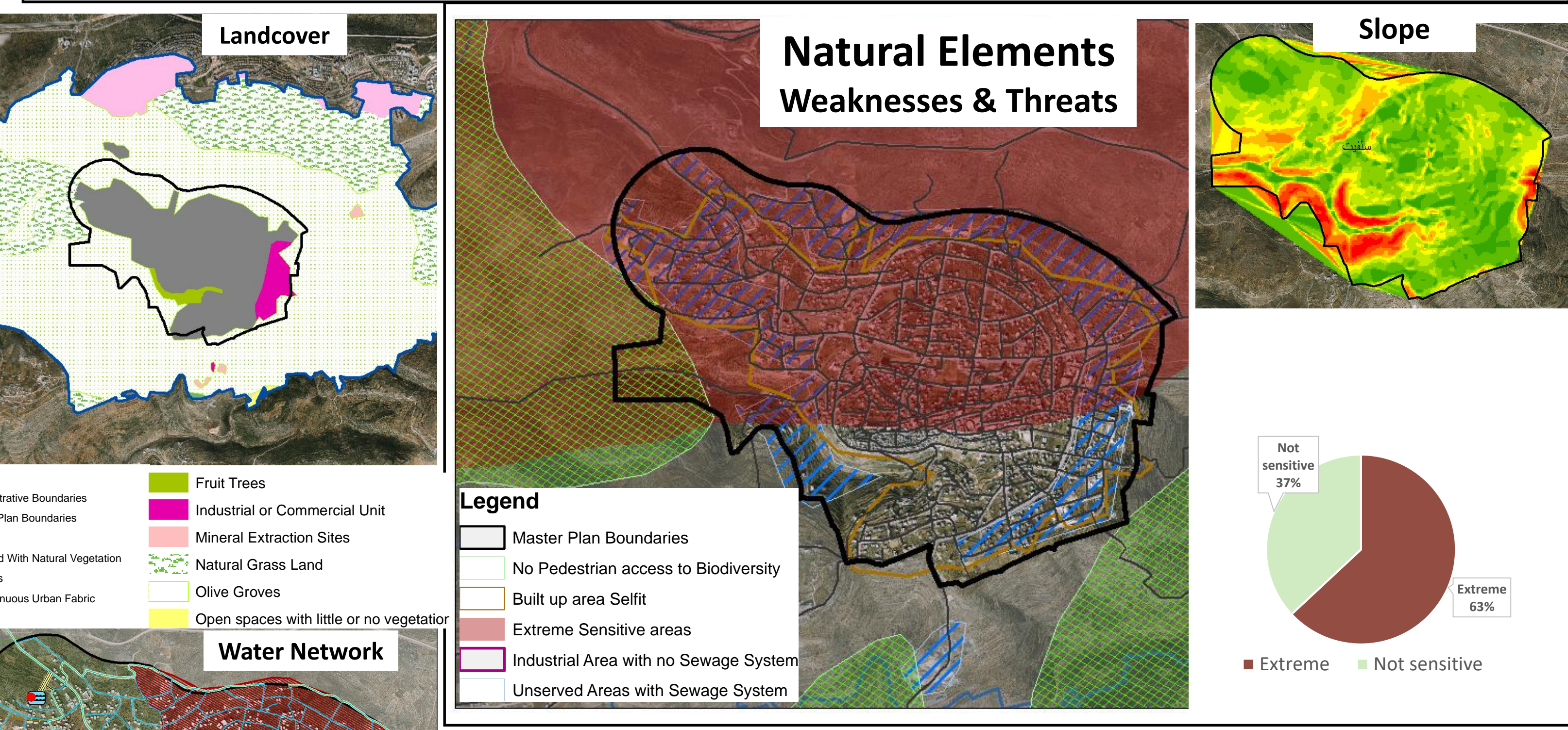
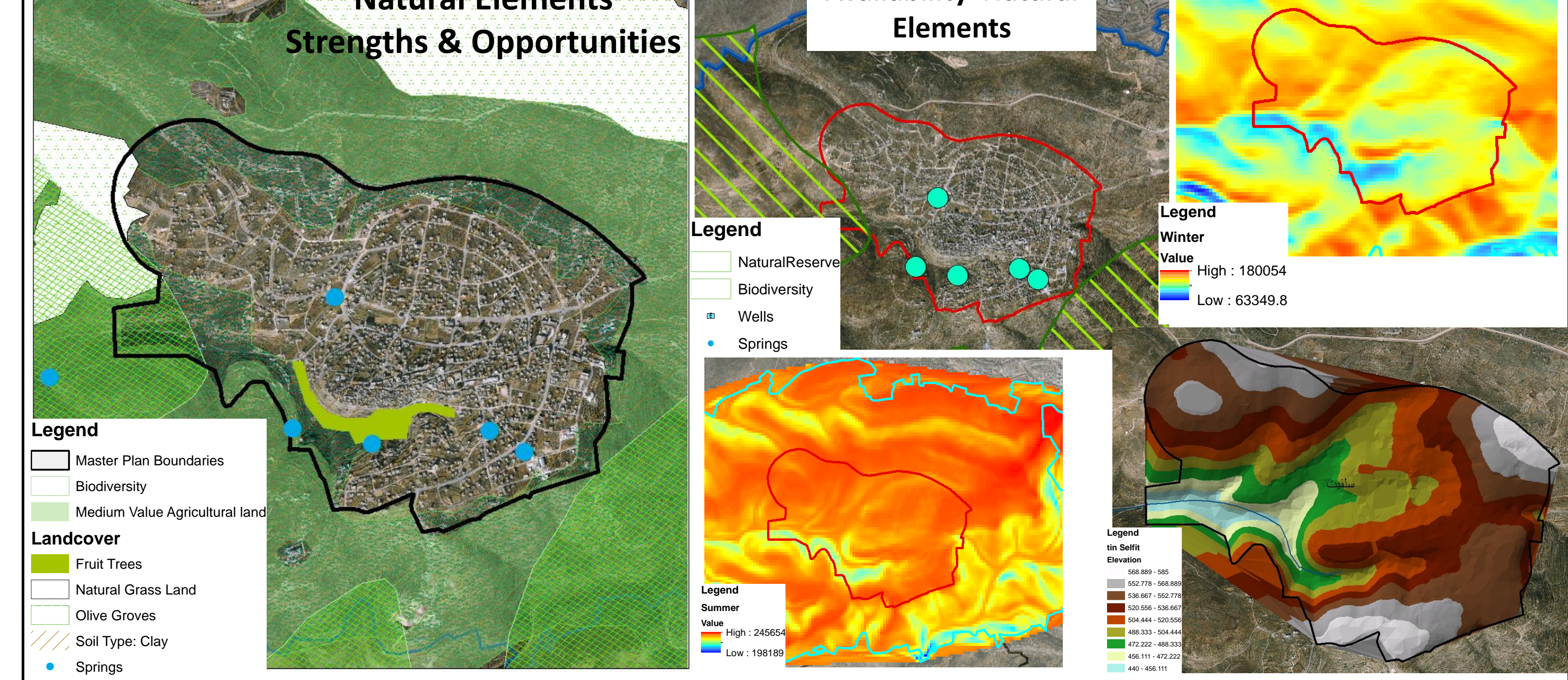
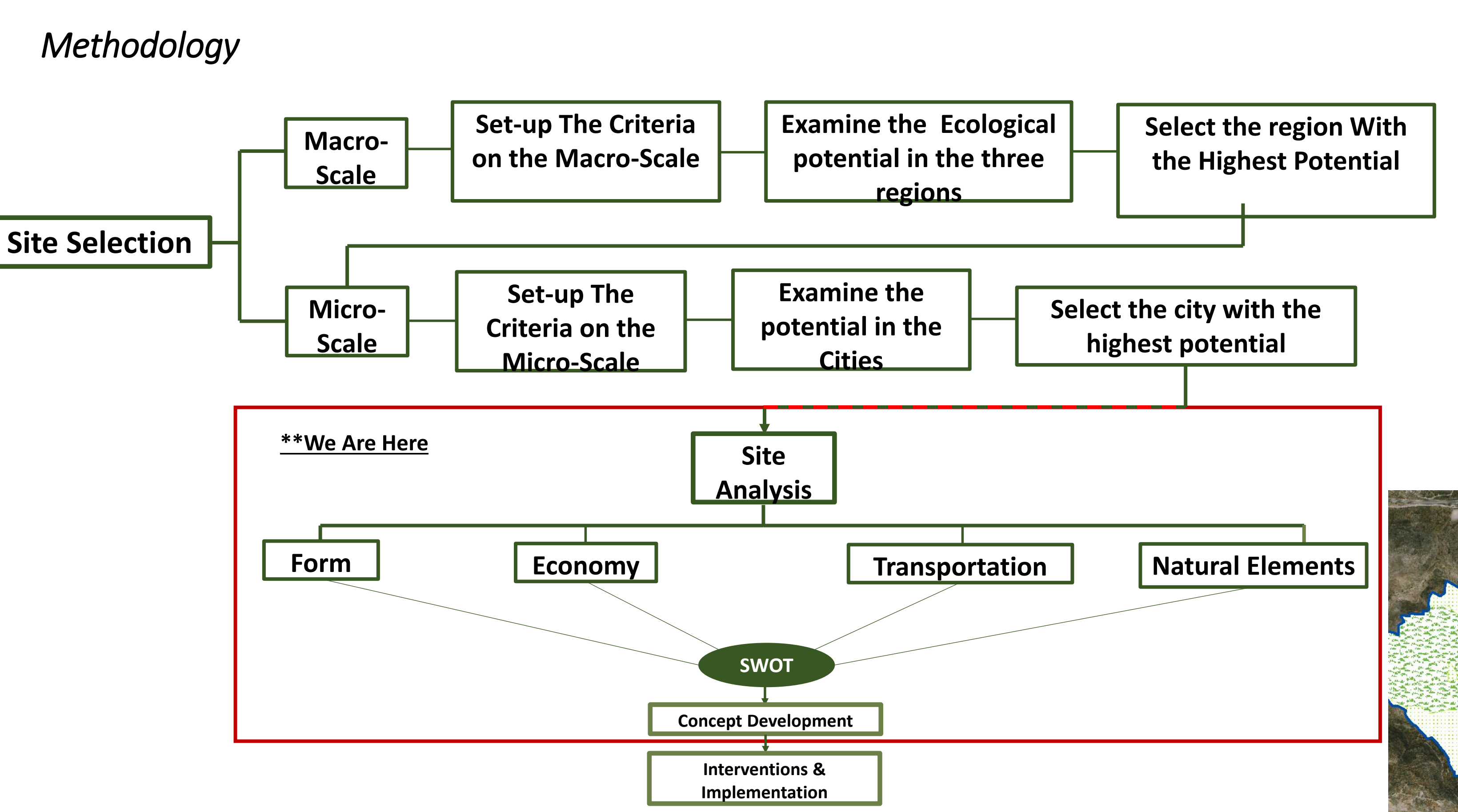
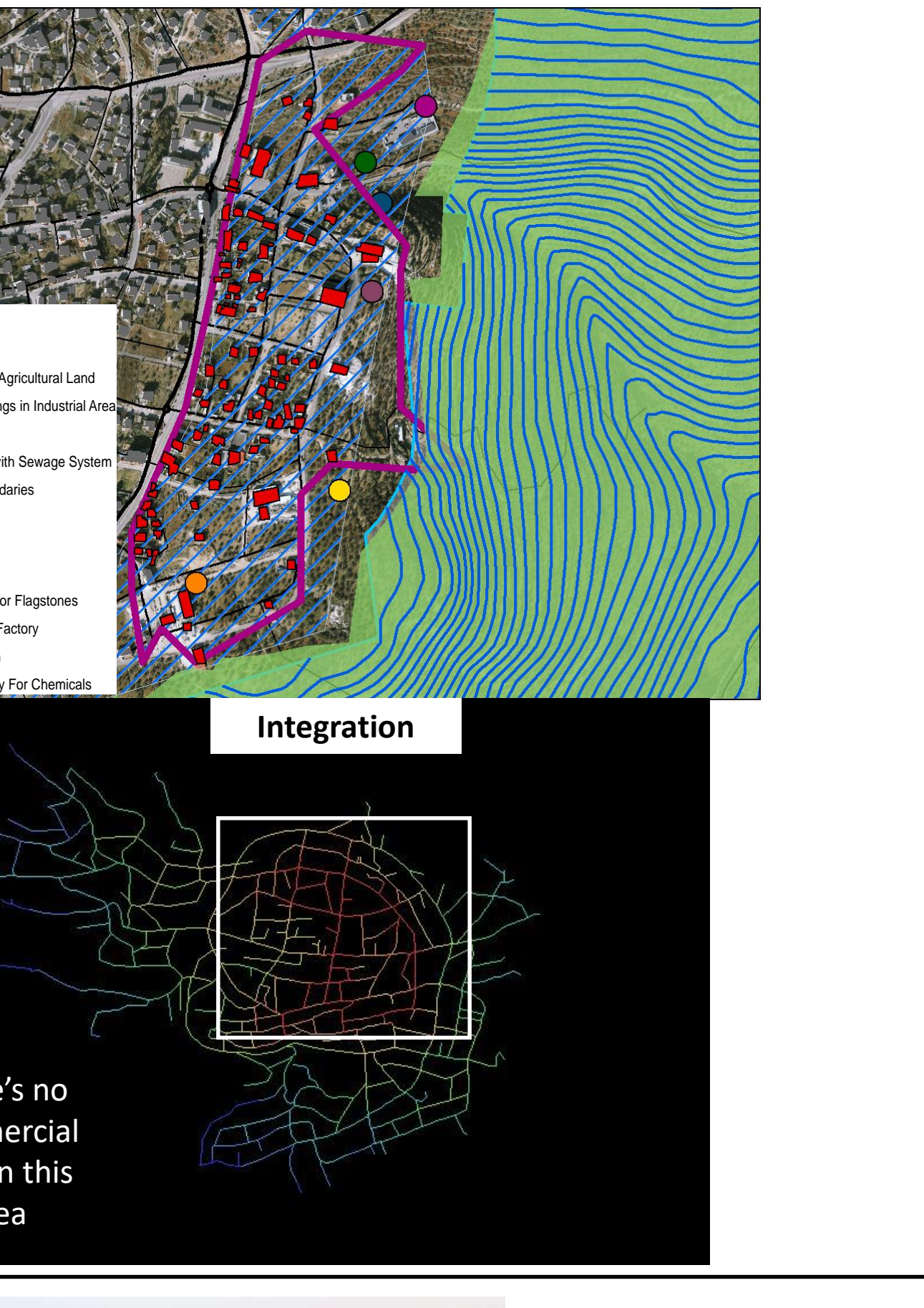
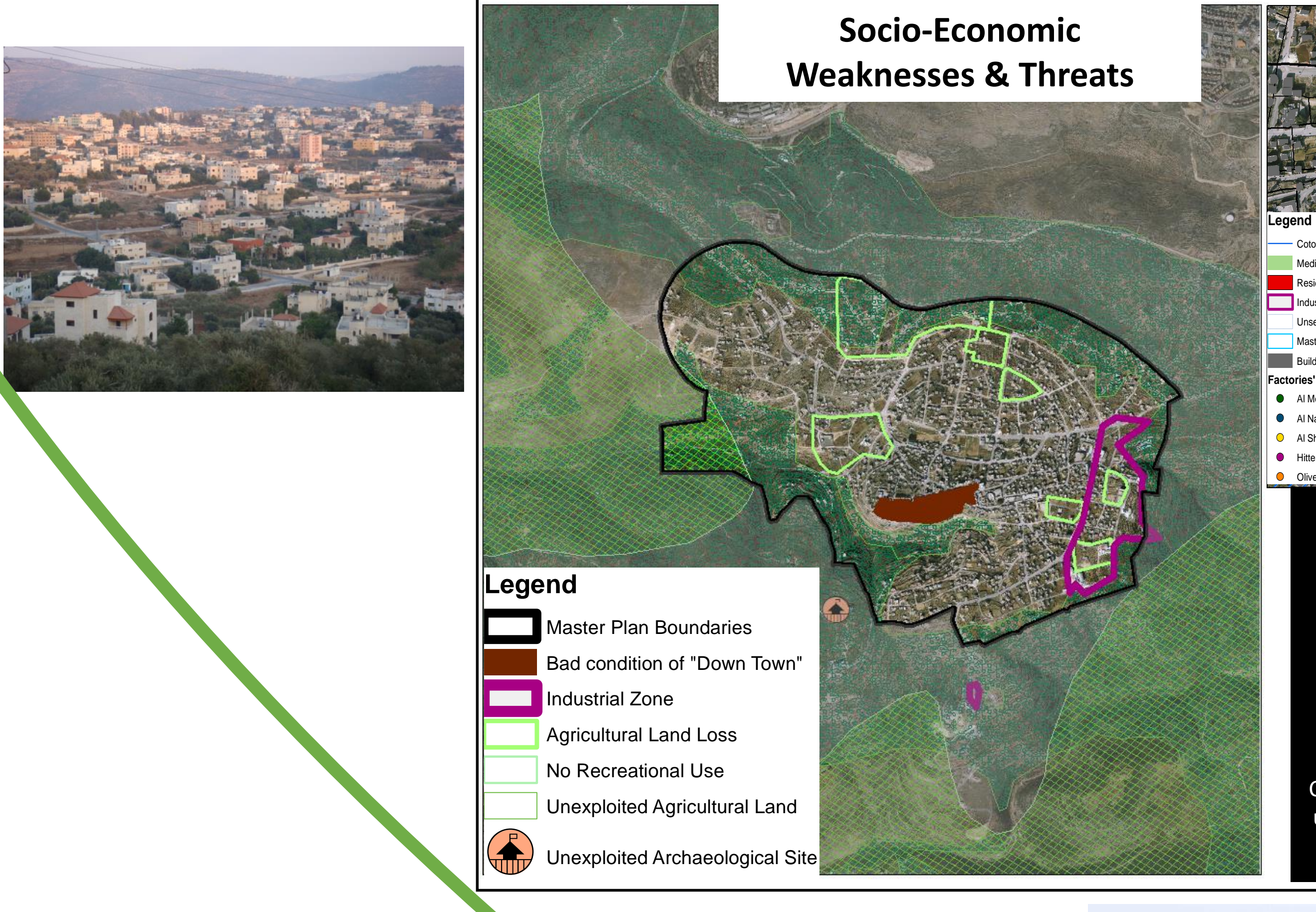
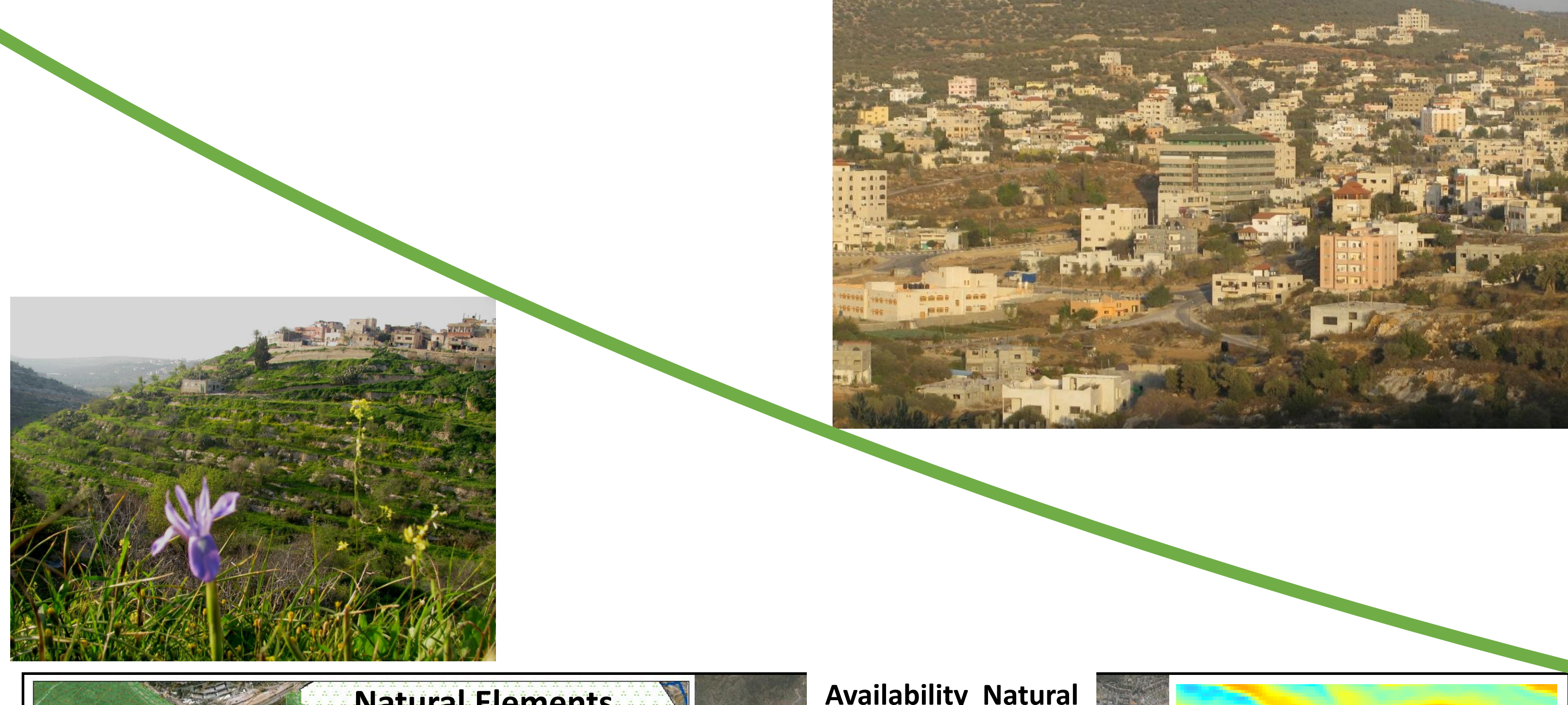
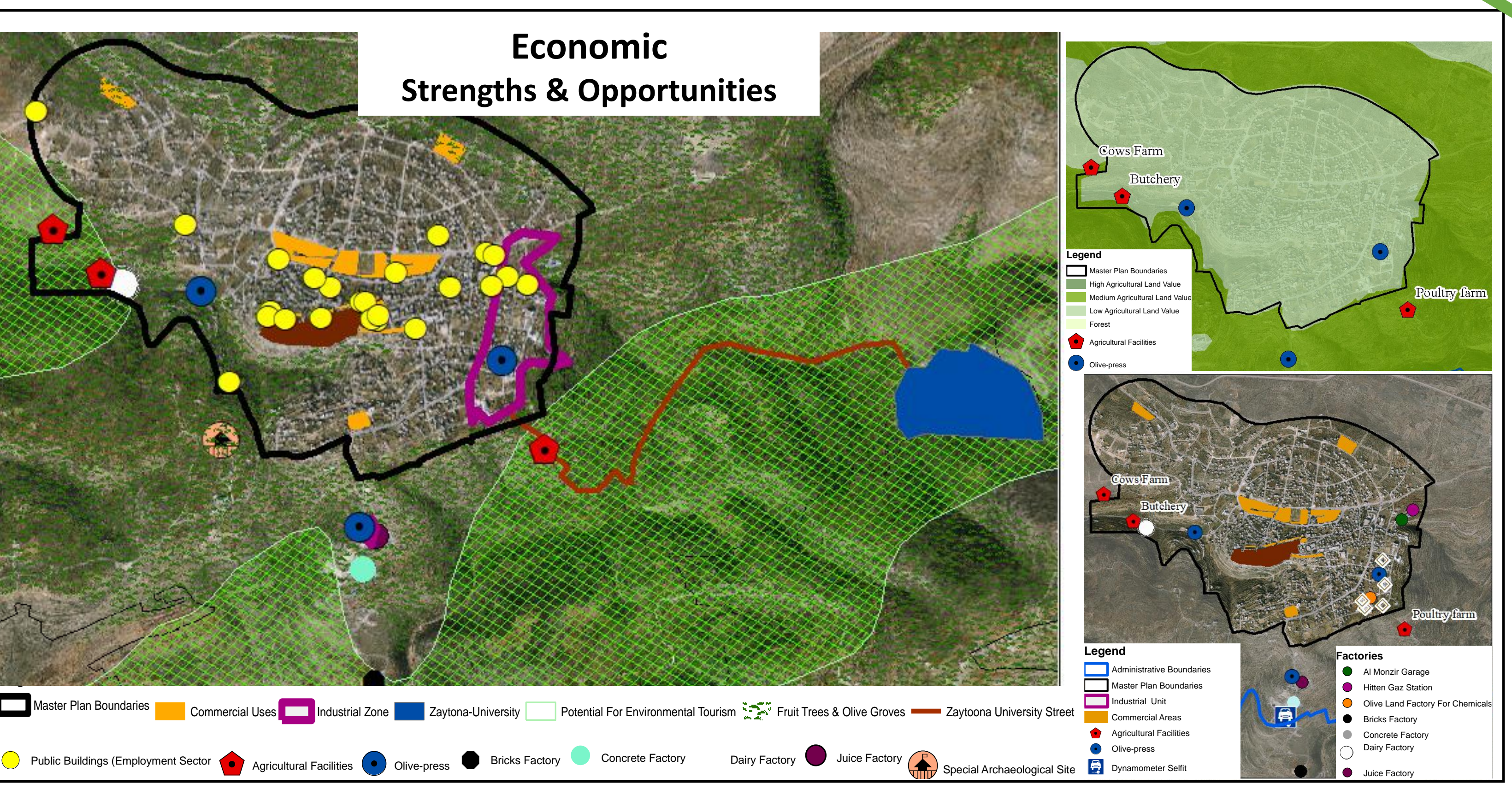
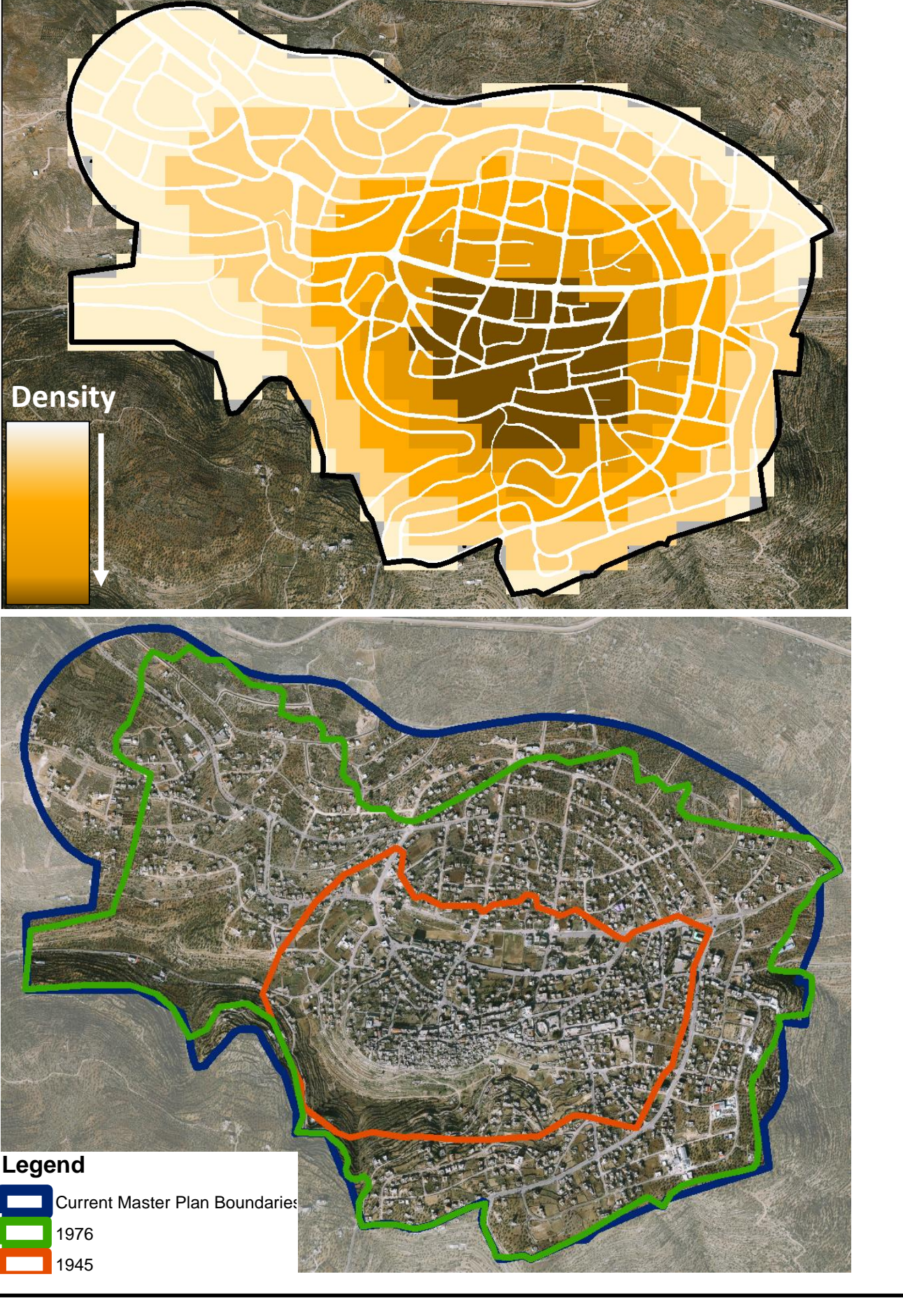
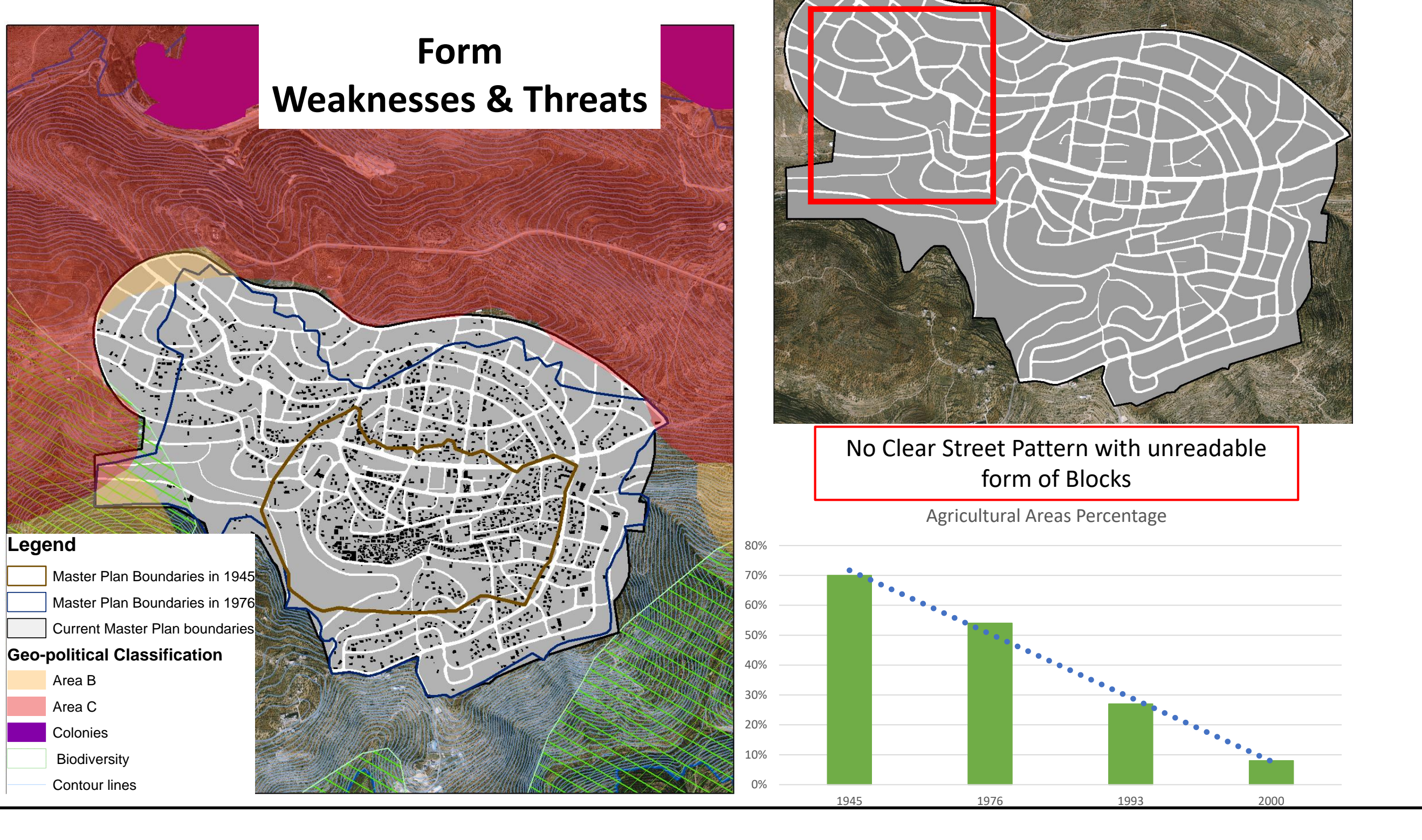
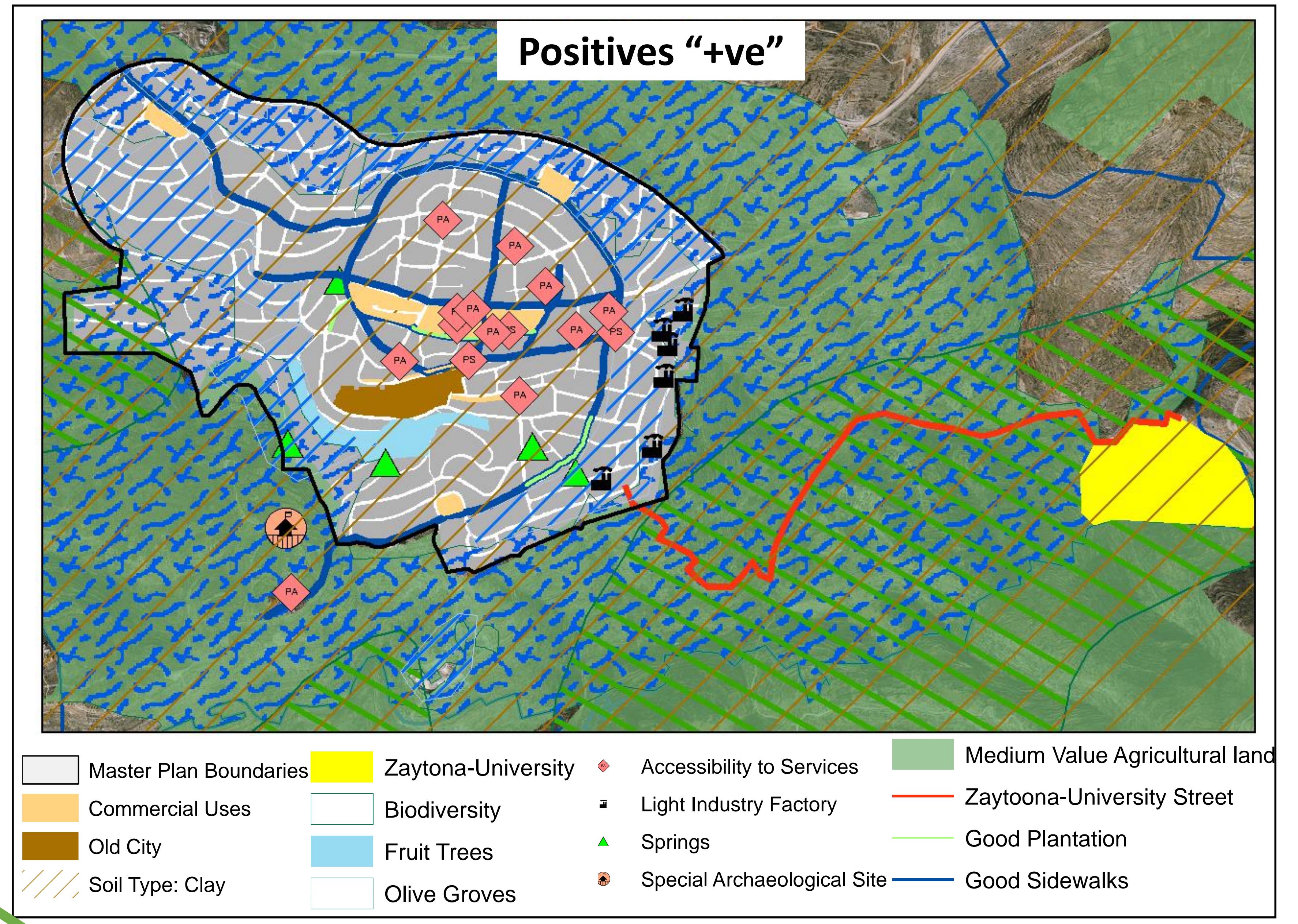
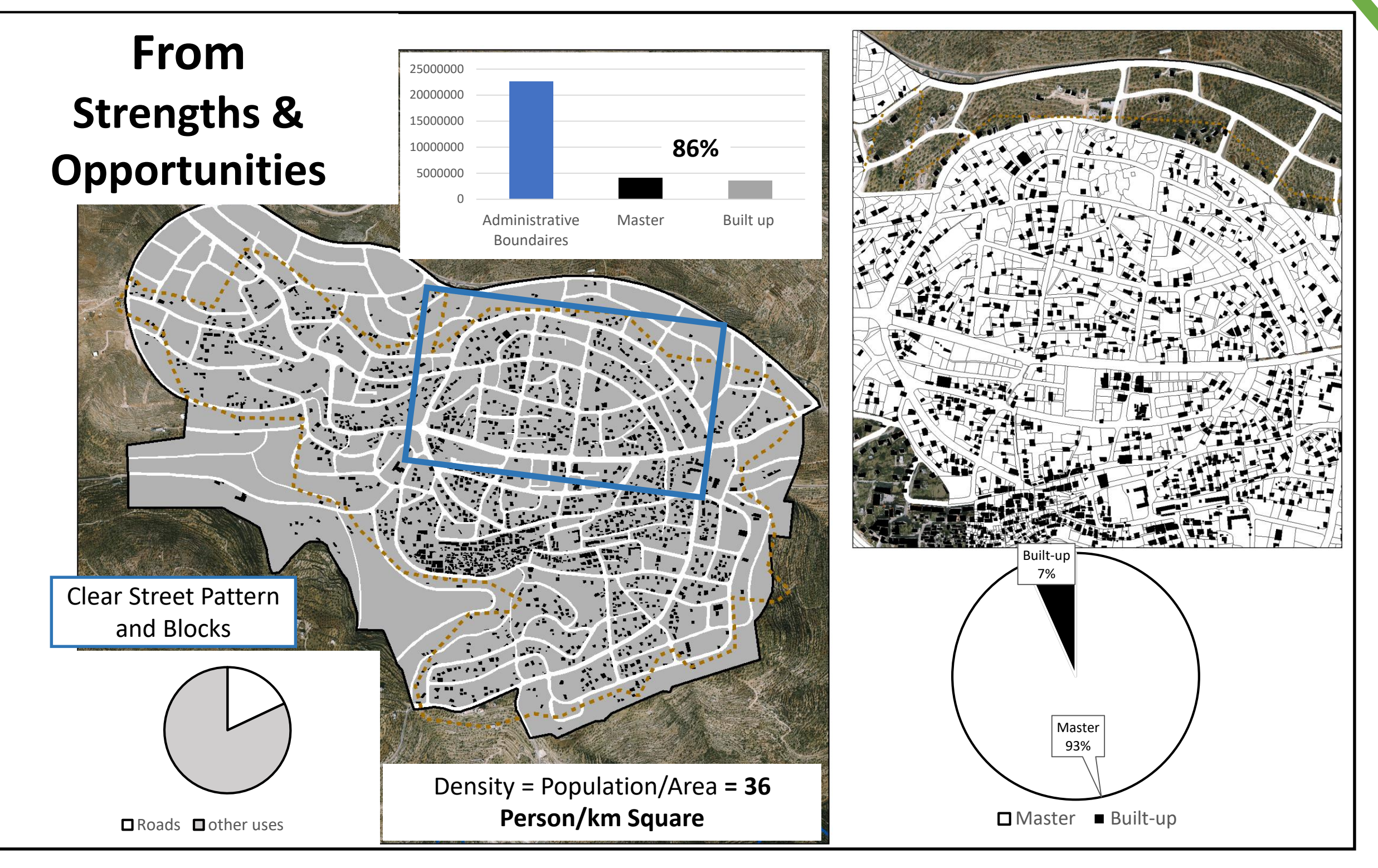


Eco-City of "Selfit"



Choosing Selfit to be an Eco-City was after examining the Ecological potential in WestBank based on specific criteria on both Macro & Micro level and this leads us to Apply ten principles on Selfit City to achieve the concept of Eco-City there.

Criteria	Weight	Mark	Weight	Mark	Weight	Mark
Agricultural lands	1	4	1	2	1	3
Sensitive areas (Soil sealing)	1	2	1	3	1	4
Low Density	3	3	3	4	3	2
Open Spaces	2	2	2	3	2	5
Natural Resources	1	4	1	2	1	2
Biodiversity	1	1	1	2	1	3
Topography & Slope	2	4	2	2	2	3
Total		20		18		23



Done by:
Mutaz Sama'neh
Under Supervision of:
Dr. Zahraa Zawawi
Dr. Ali Abd-Al Hameed